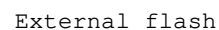



5 dBm Tx / Rx
10 dBm Tx

DIO3	DIO0
0	1
1	0

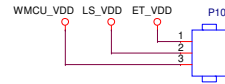
The image shows two circuit diagrams. The left diagram shows a component with a pin labeled 'P1' connected to a terminal labeled 'WMCU_VDD'. The right diagram shows a component with a pin labeled 'P1' connected to a terminal labeled '5V0_BP'. Both diagrams show the internal wiring of the component and the connection to ground.



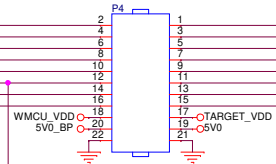
Title: LP-CC2652PSIP		 TEXAS INSTRUMENTS
Drawn: RGW		
Checked:		
Size: A3	Rev: A	Sheet: 1 of 6
Date: Friday, February 25, 2022		

XDS110 Debugger Interface

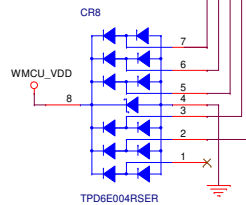
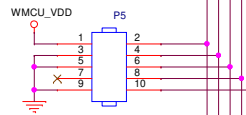
P10 selects the voltage source for the level shifters
 When powering the wireless MCU from the XDS supply, connect jumper between pins 1 and 2.
 When powering the wireless MCU from the external supply, connect jumper between pins 2 and 3.



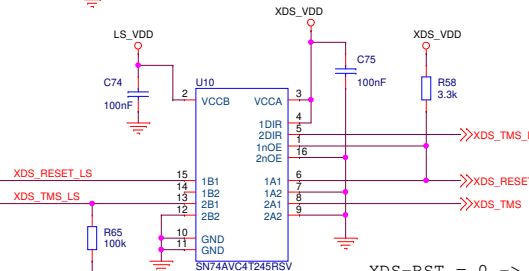
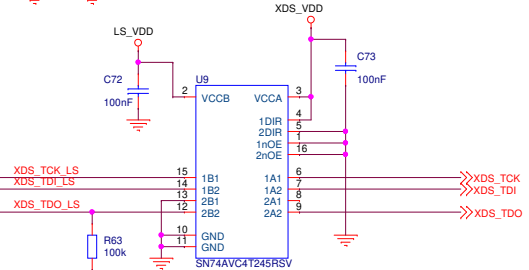
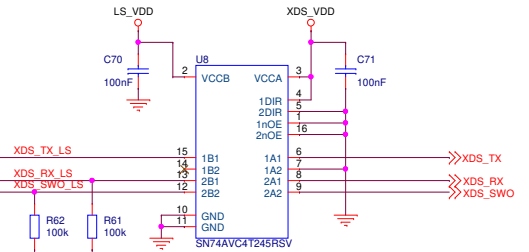
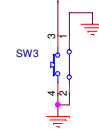
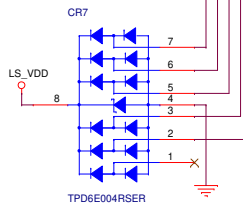
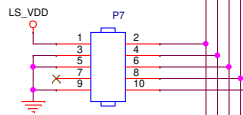
WMCU_SWO
 DIO17_TDI
 DIO16_TDO
 WMCU_TCK
 WMCU_TMS
 WMCU_RESET
 WMCU_TXD
 WMCU_RXD



Use P5 for debugging
 the wireless MCU with an
 external debugger
 (requires that all
 jumpers be removed)




Use P7 for debugging
 external targets
 (requires that all
 jumpers be removed)



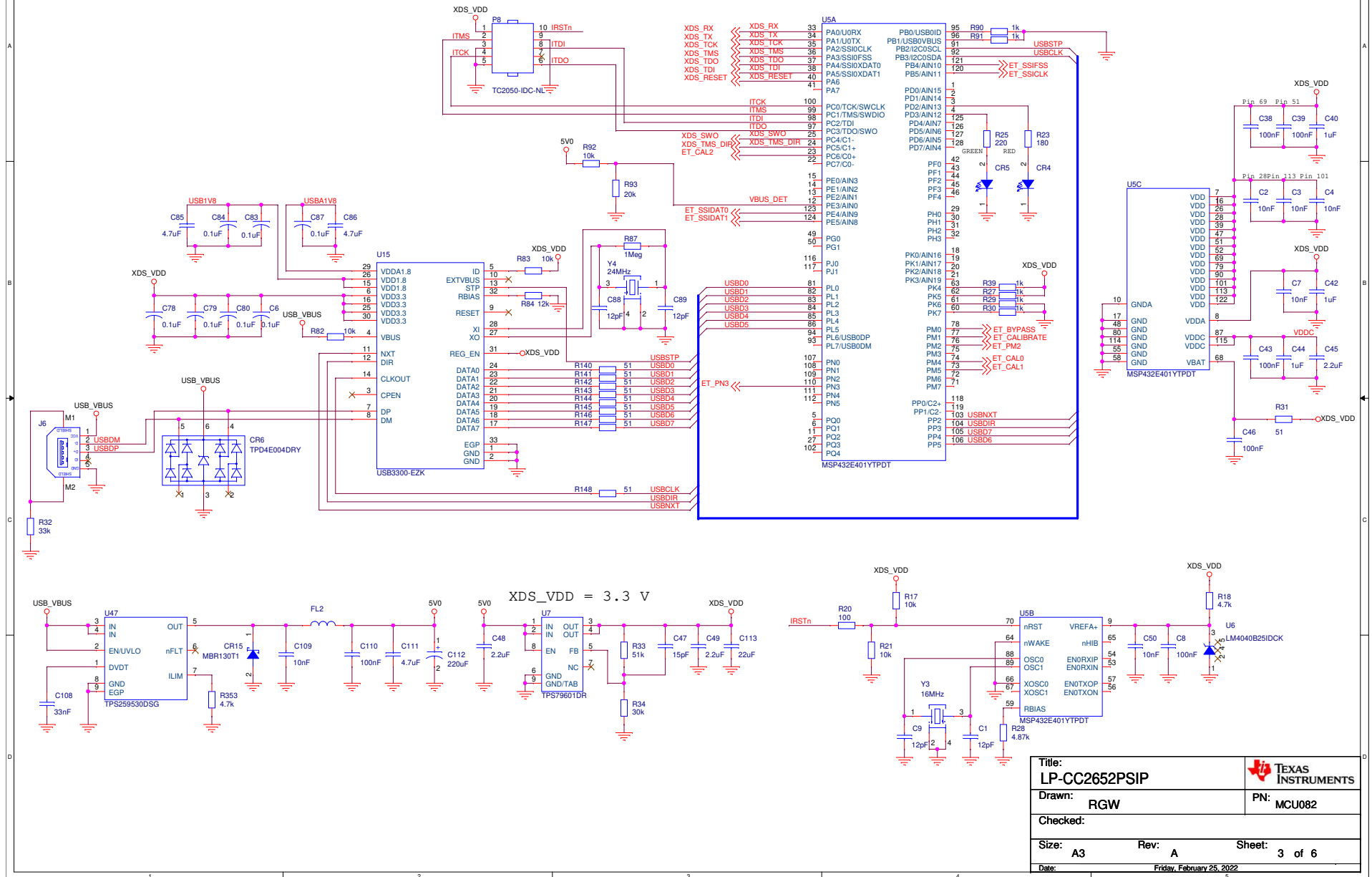
DIR = H: A -> B
 DIR = L: B -> A
 OE = H: output = Hi-Z

XDS-RST = 0 -> output = 0
 XDS-RST = 1 -> output = Hi-Z

TMS signal is bidirectional.
 TMS_DIR used to control
 direction of level shifter

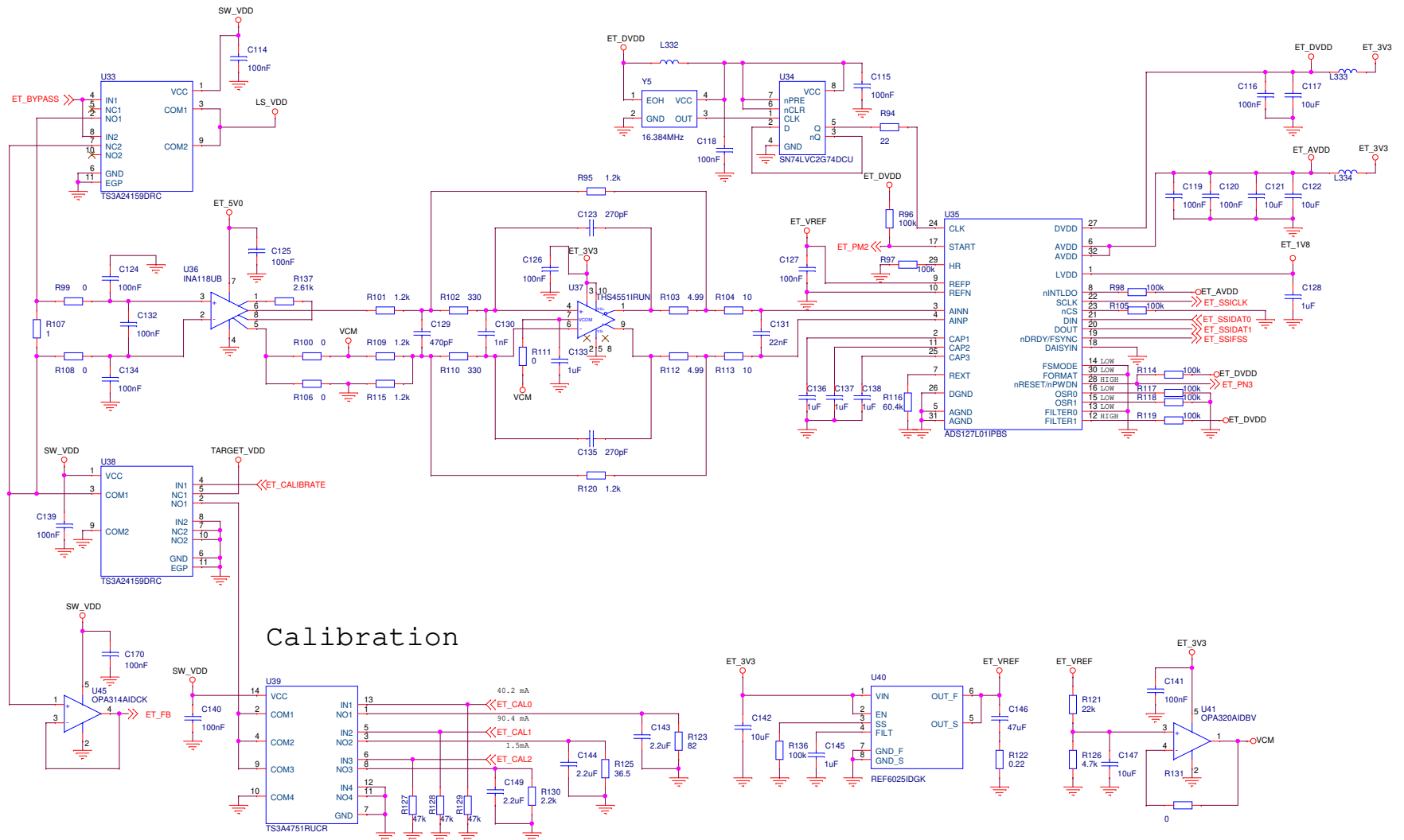
Title: LP-CC2652PSIP		 TEXAS INSTRUMENTS
Drawn: RGW		
Checked:		
Size: A3	Rev: A	Sheet: 2 of 6
Date: Friday, February 25, 2022		


XDS110 Debugger



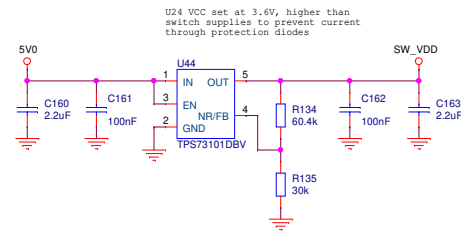
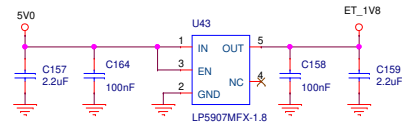
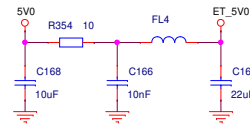
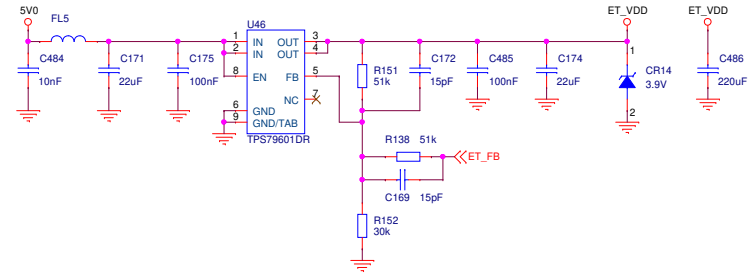
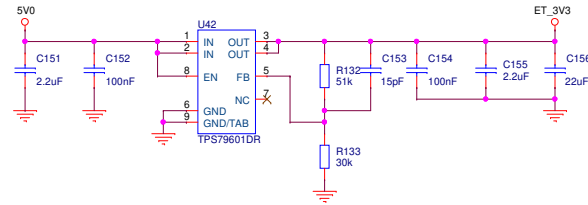
Title:		TEXAS INSTRUMENTS	
LP-CC2652PSIP		PN: MCU082	
Drawn:		RGW	
Checked:			
Size:		Rev: A	
A3		Sheet: 3 of 6	
Date:		Friday, February 25, 2022	

EnergyTrace




Title: LP-CC2652PSIP		 TEXAS INSTRUMENTS
Drawn: RGW		
Checked:		
Size: A3	Rev: A	Sheet: 4 of 6
Date: Friday, February 25, 2022		

EnergyTrace Power Supply



U24 VCC set at 3.6V, higher than switch supplies to prevent current through protection diodes

Title: LP-CC2652PSIP		 TEXAS INSTRUMENTS
Drawn: RGW		PN: MCU082
Checked:		
Size: A3	Rev: A	Sheet: 5 of 6
Date: Friday, February 25, 2022		

Mechanical

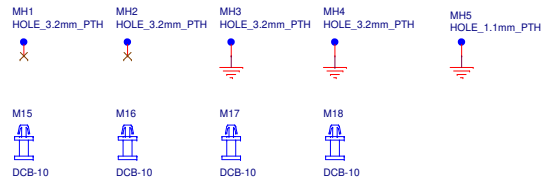
Jumpers

P6: M1 M2
P4: M3 M4 M5 M6 M7 M8 M9 M10 M11 M12 M13
P10: M14

PCB



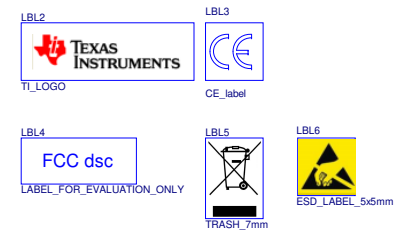
Mounting Holes



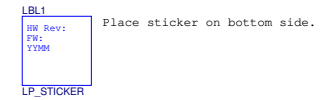
Fiducials




Labels



Stickers



Title: LP-CC2652PSIP		 TEXAS INSTRUMENTS
Drawn: RGW		
Checked:		PN: MCU082
Size: A3 Rev: A Sheet: 6 of 6		
Date: Friday, February 25, 2022		