

A

B

C

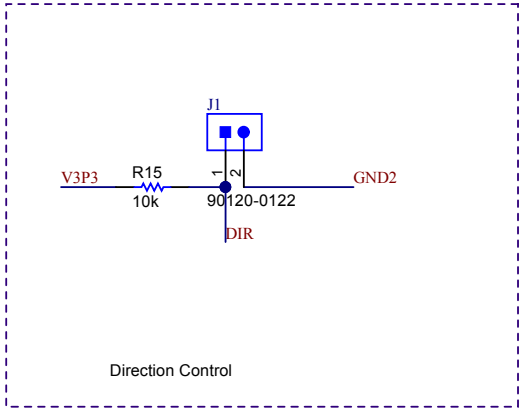
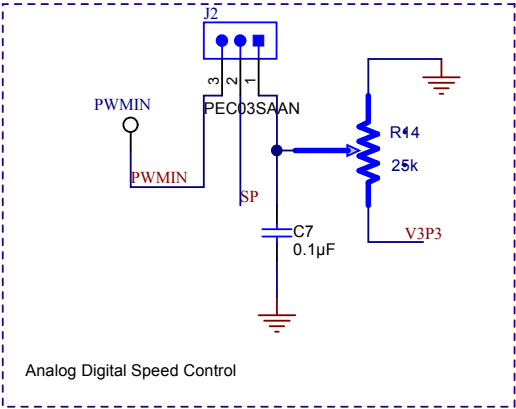
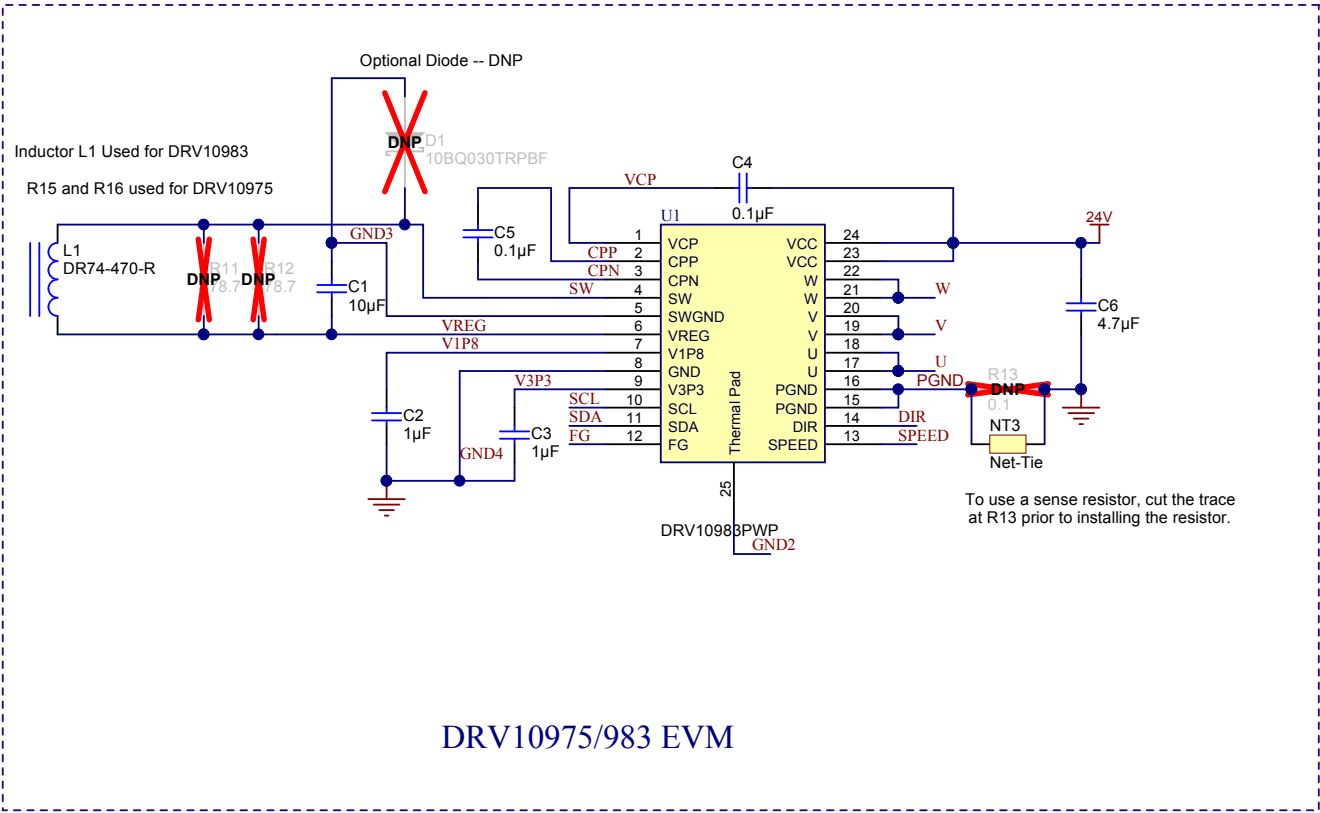
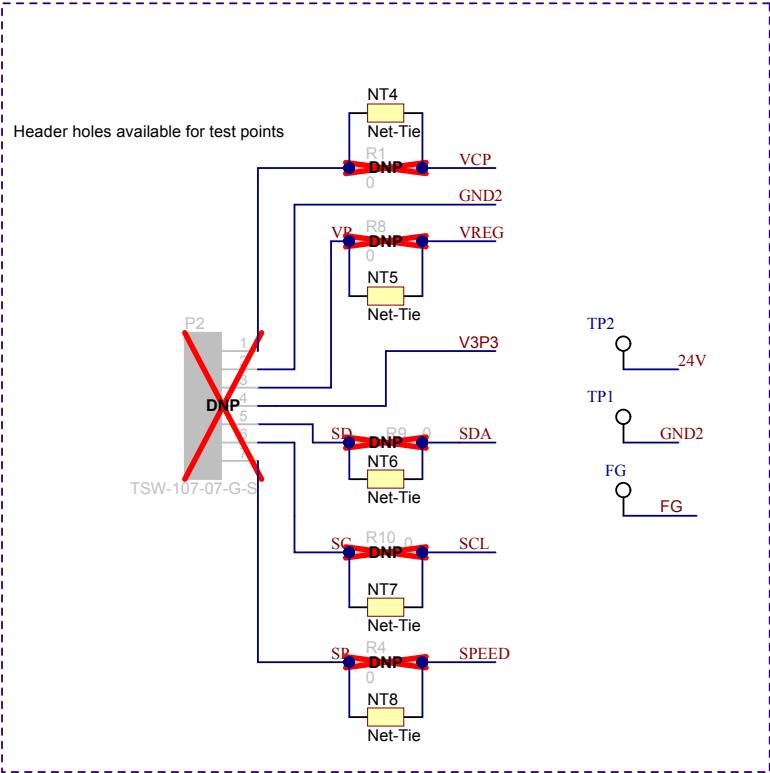
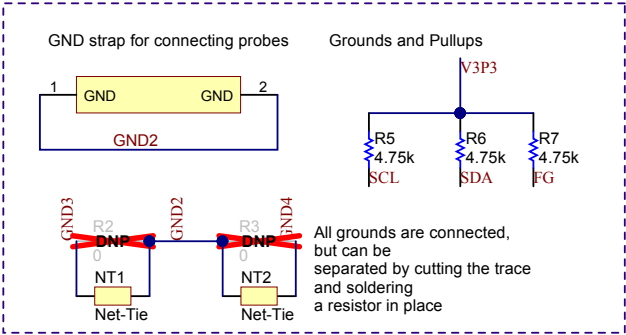
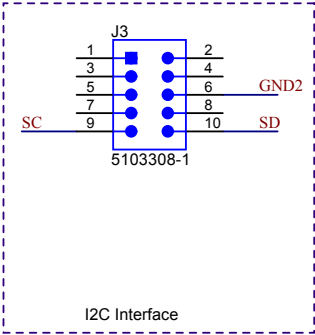
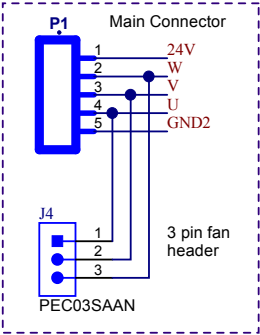
D

A

B

C

D



Texas Instruments and/or its licensors do not warrant the accuracy or completeness of this specification or any information contained therein. Texas Instruments and/or its licensors do not warrant that this design will meet the specifications, will be suitable for your application or fit for any particular purpose, or will operate in an implementation. Texas Instruments and/or its licensors do not warrant that the design is production worthy. You should completely validate and test your design implementation to confirm the system functionality for your application.

Designed for: Public Release	Mod. Date: 6/26/2014	
Project Title: DRV10975/983	Rev: A	
Sheet Title:	Assembly Variant: DRV10983	
SVN Rev: Not in version control	File: DRV10983 Customer EVM.SchDoc	
Drawn By:	Contact: http://www.ti.com/support	

Number: 10975/983
Engineer: Rick Duncan

Sheet: 1 of 1
Size: B

© Texas Instruments 2014

1		2		3		4		5		6		
											Revision History	
											Revision	Notes

Texas Instruments and/or its licensors do not warrant the accuracy or completeness of this specification or any information contained therein. Texas Instruments and/or its licensors do not warrant that this design will meet the specifications, will be suitable for your application or fit for any particular purpose, or will operate in an implementation. Texas Instruments and/or its licensors do not warrant that the design is production worthy. You should completely validate and test your design implementation to confirm the system functionality for your application.