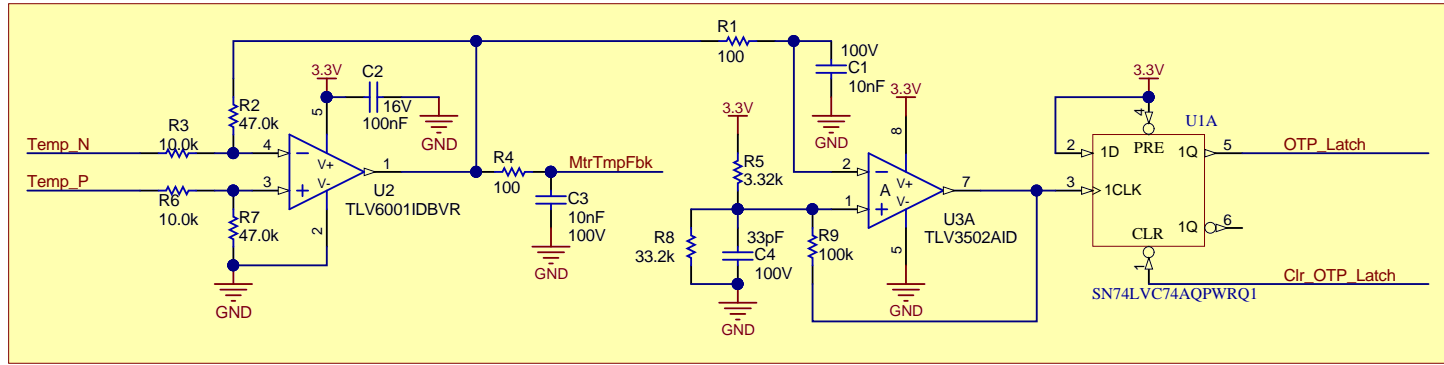
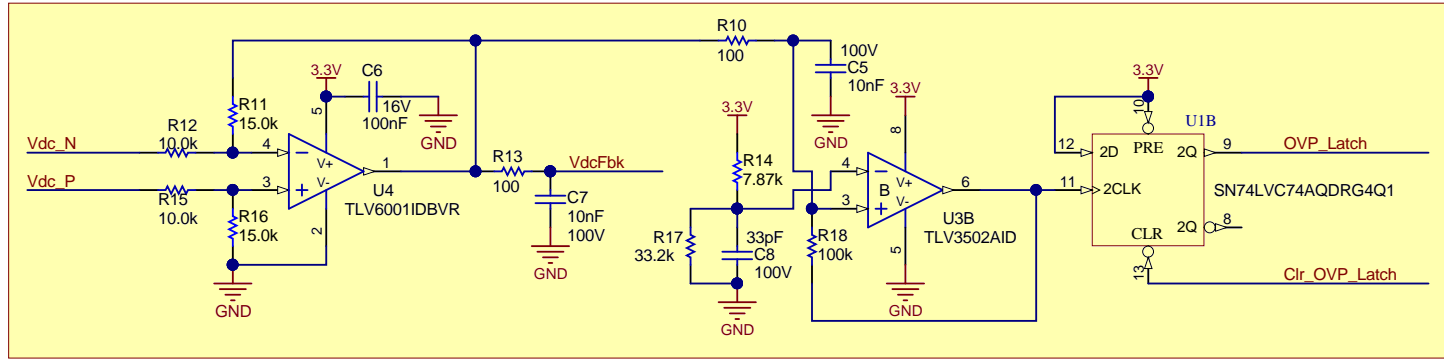


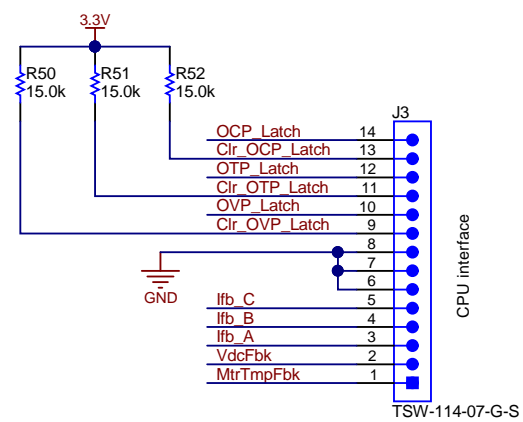
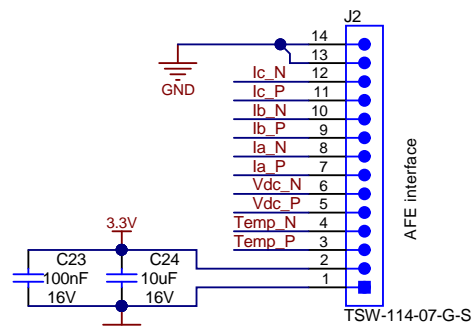
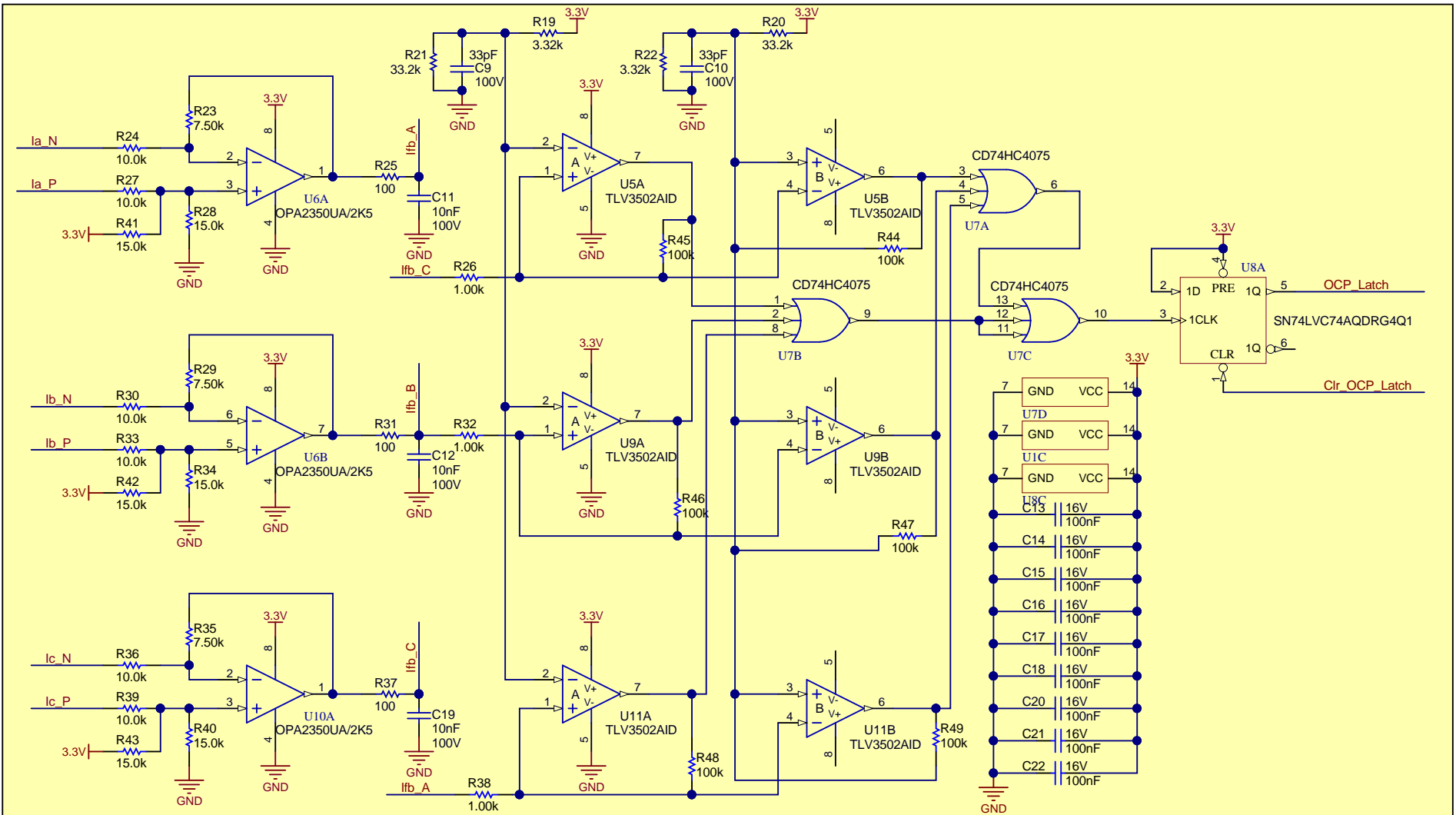
Thermal signal conditioning and protection



DC bus signal conditioning and protection



Phase current conditioning and protection



FID1

FID2

FID3

PCB LOGO

Texas Instruments

PCB LOGO

WEEE logo

PCB Number: EVT\_007

PCB Rev: E2

CE Mark

Variant/Label Table	
Variant	Label Text
001	ChangeMe!
002	ChangeMe!

- ZZ1

Label Assembly Note

This Assembly Note is for PCB labels only
- ZZ2

Assembly Note

These assemblies are ESD sensitive, ESD precautions shall be observed.
- ZZ3

Assembly Note

These assemblies must be clean and free from flux and all contaminants. Use of no clean flux is not acceptable.
- ZZ4

Assembly Note

These assemblies must comply with workmanship standards IPC-A-610 Class 2, unless otherwise specified.