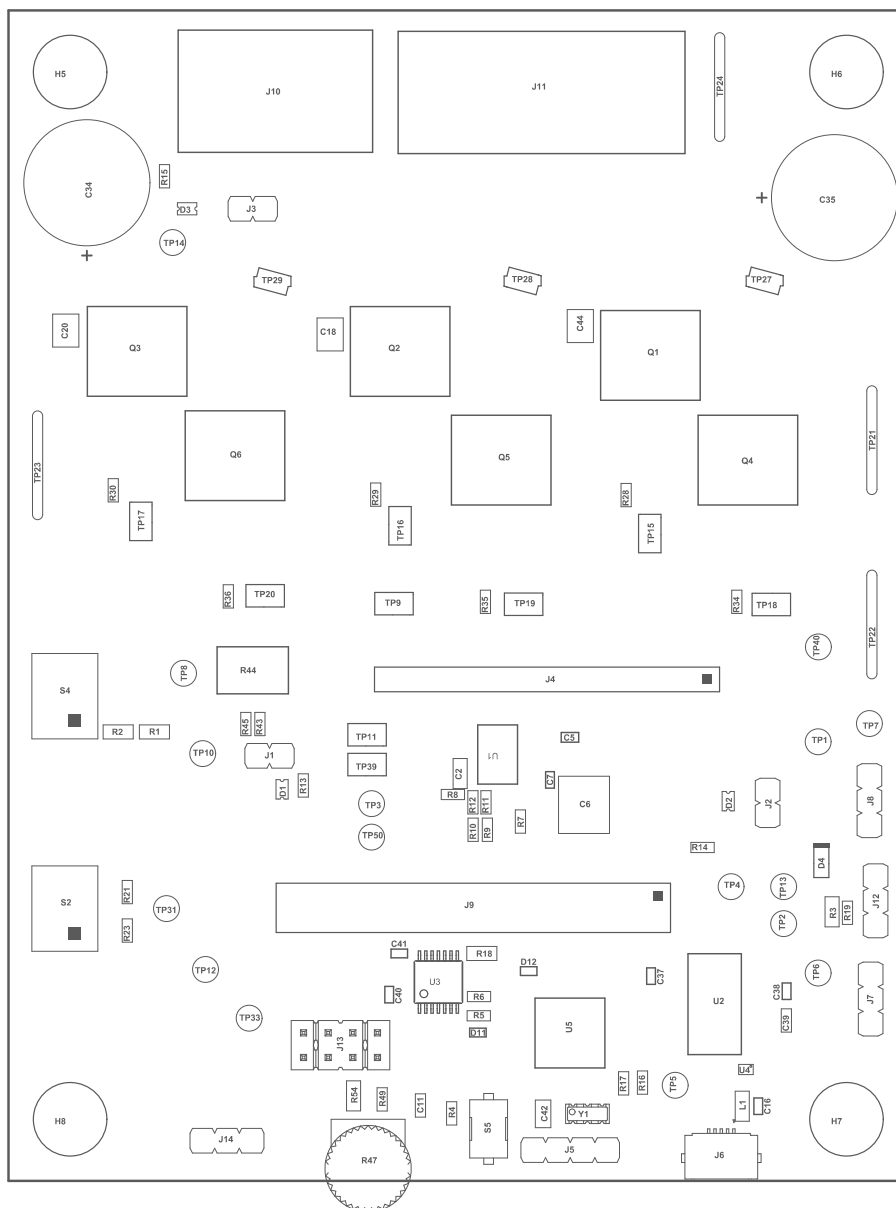


zz4 ■ These assemblies must comply with workmanship standards IPC-A-610 Class 2, unless otherwise specified.

zz3 ■ These assemblies must be clean and free from flux and all contaminants. Use of no clean flux is not acceptable.

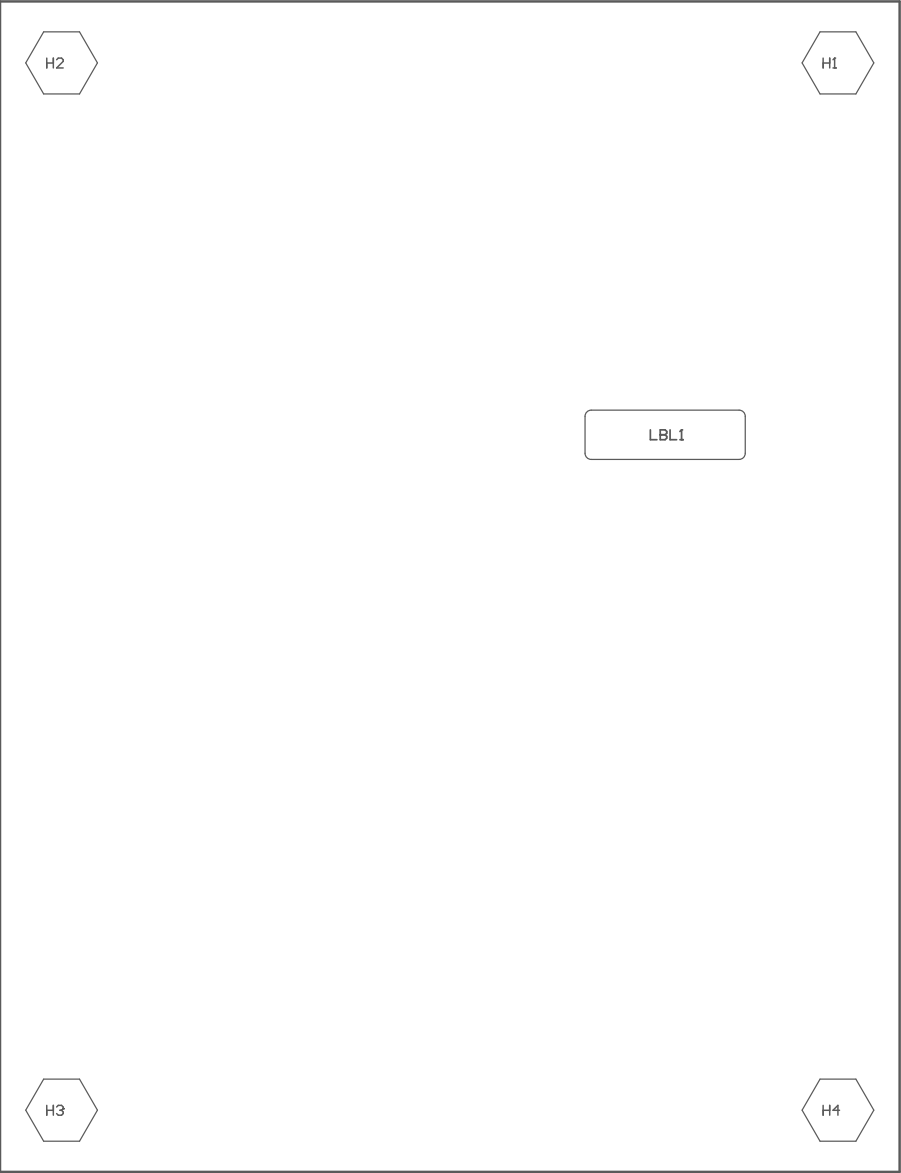
222 ■ These assemblies are ESD sensitive, ESD precautions shall be observed.

zz1 ■ Install label in silkscreened box after final wash. Text shall be 8 pt font. Text shall be per the Label Table in the PDF schematic.



COMPONENTS MARKED 'DNP' SHOULD NOT BE POPULATED.
ASSEMBLY VARIANT: 001

PCB VIEWED FROM TOP SIDE	BOARD #: MCF8329HS_32RRY_EVM	REV: A	SUN REV: Not In VersionControl
M5 Assembly Top	TID #: N/A		
PLOT NAME = Top Assembly Drawing	GENERATED : 25-09-2025 14:22:22		TEXAS INSTRUMENTS



COMPONENTS MARKED 'DNP' SHOULD NOT BE POPULATED.
ASSEMBLY VARIANT: 001

PCB VIEWED FROM BOTTOM SIDE	BOARD #: MCF8329HS_32RRY_EVM	REV: A	SUN REV: Not In VersionControl
M6 Assembly Bottom	TID #: N/A		
PLOT NAME = Bottom Assembly Drawing	GENERATED : 25-09-2025 14:22:22	TEXAS INSTRUMENTS	