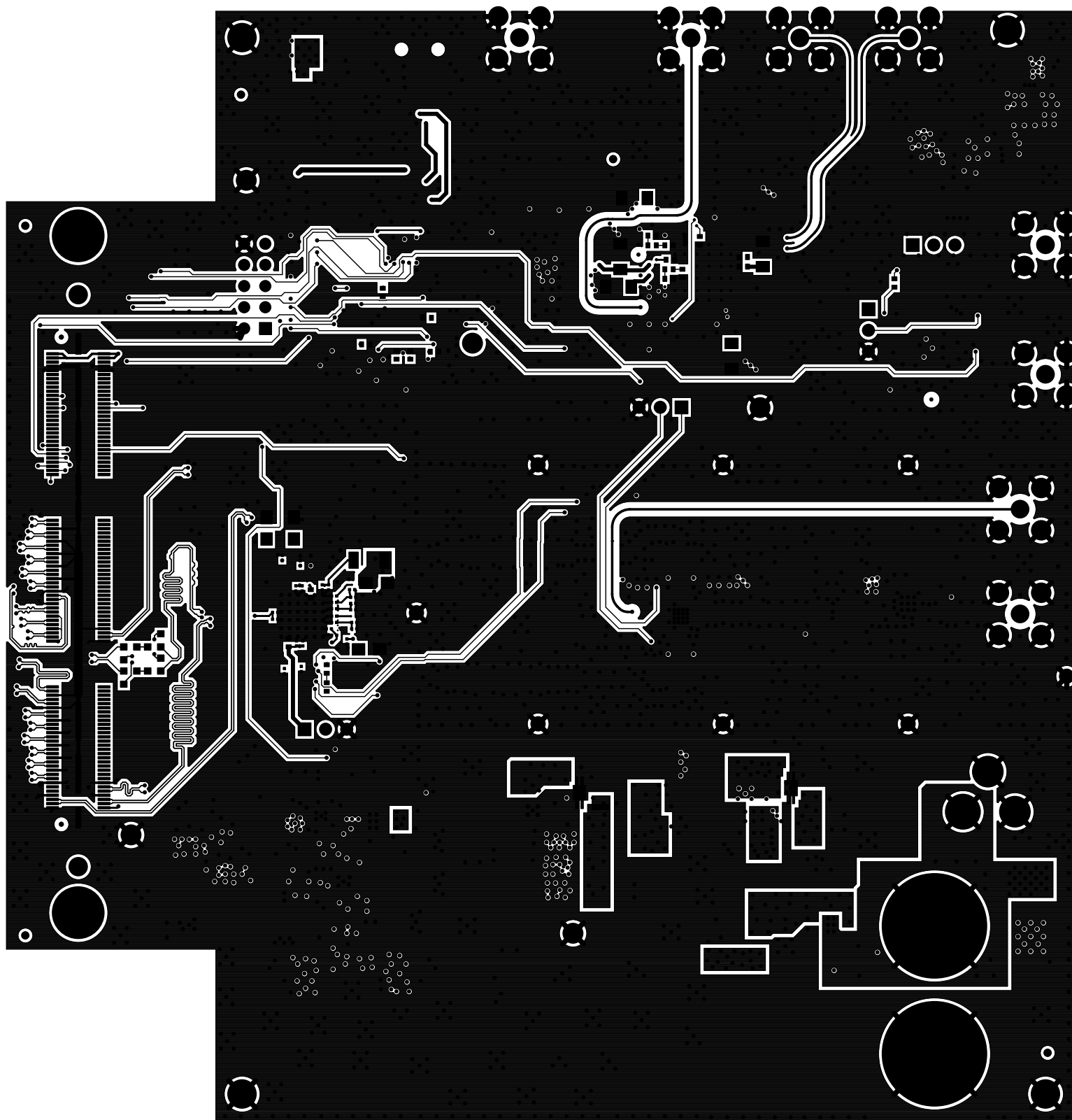
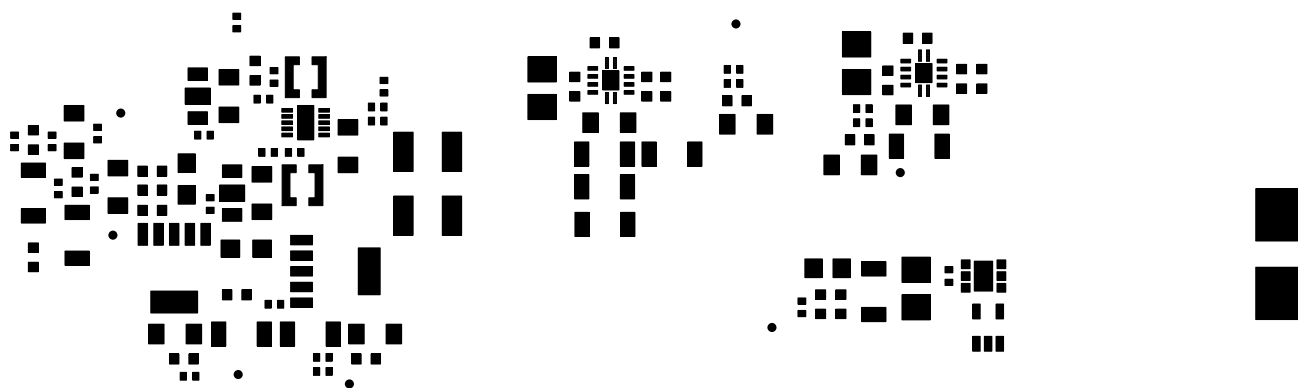
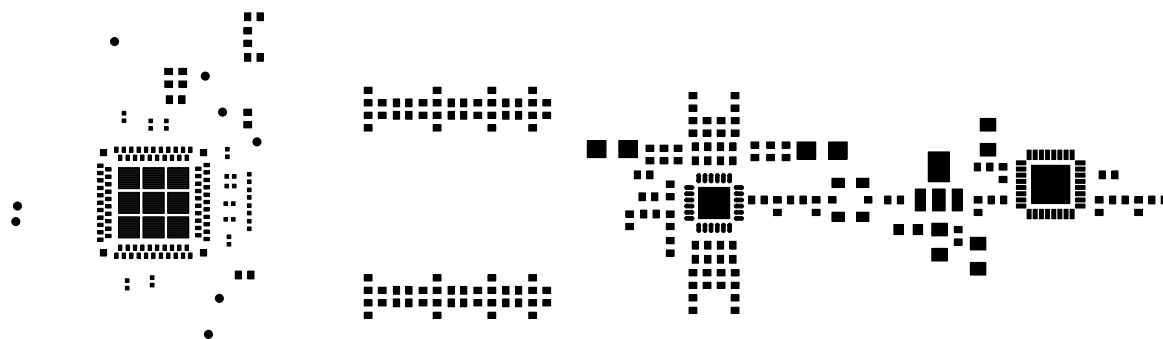
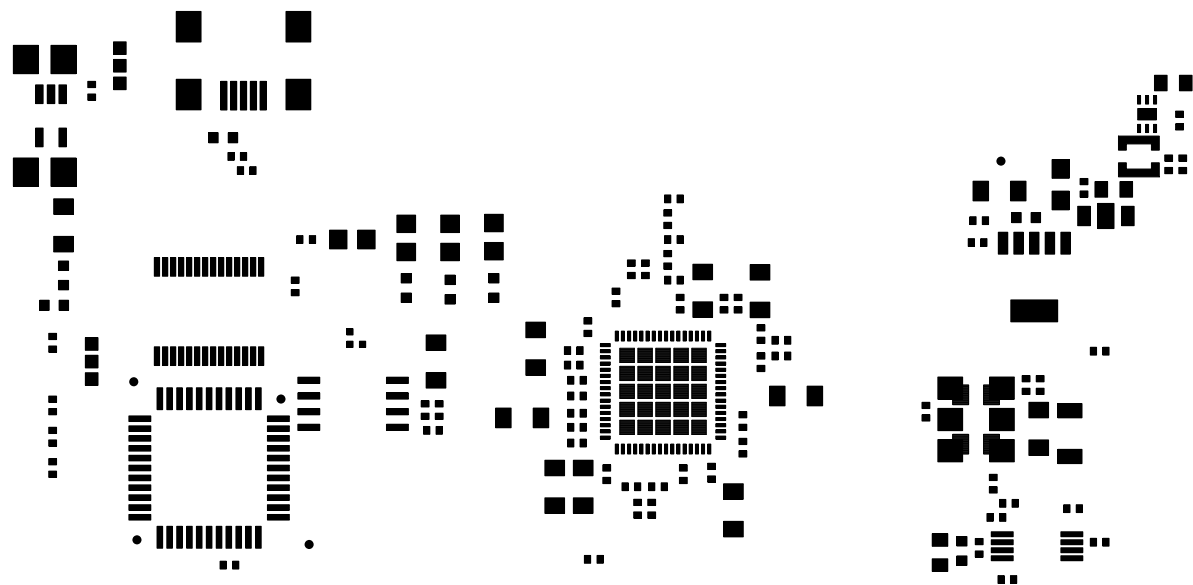


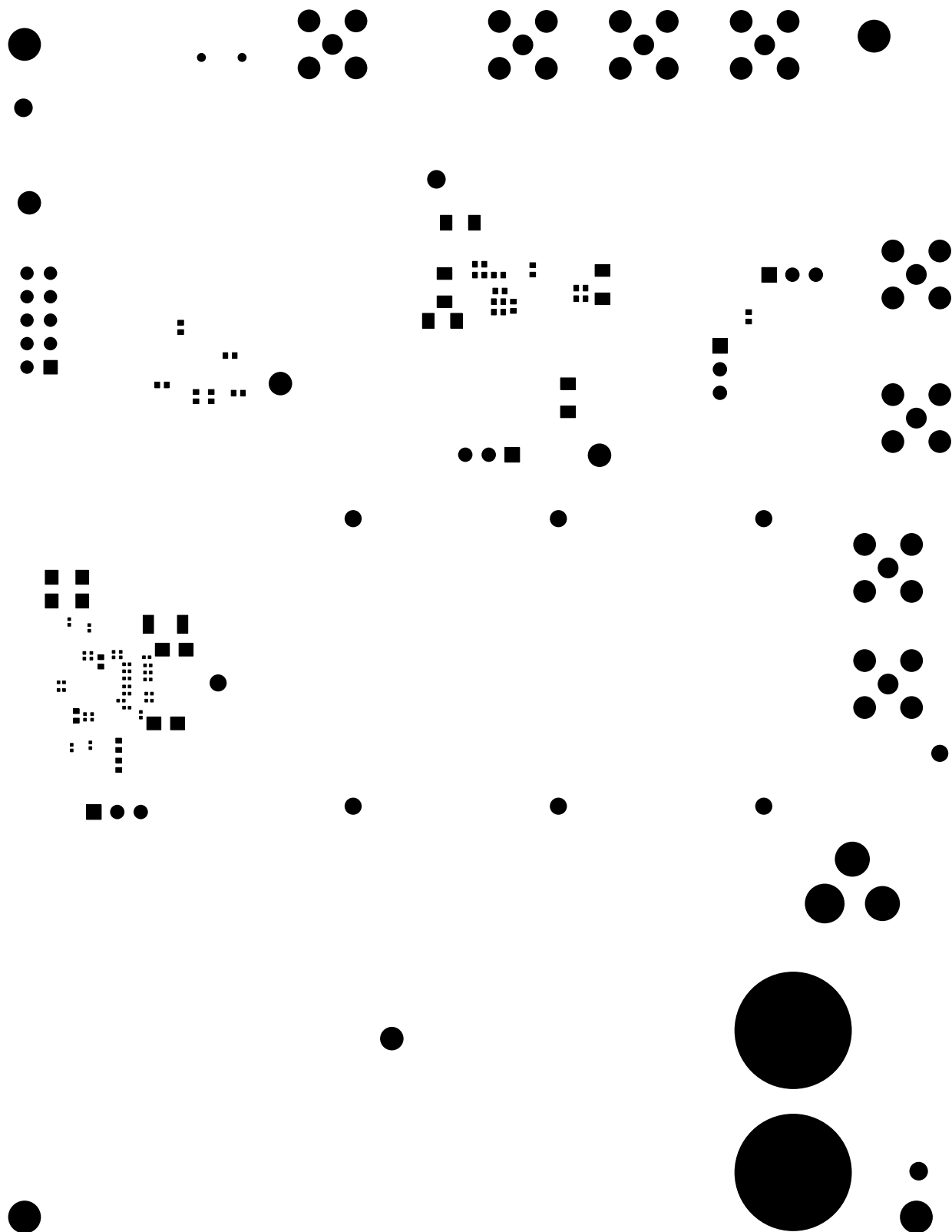
TEXAS INSTRUMENTS
TSW3085 REV B
LAYER 1 - TOP SIDE



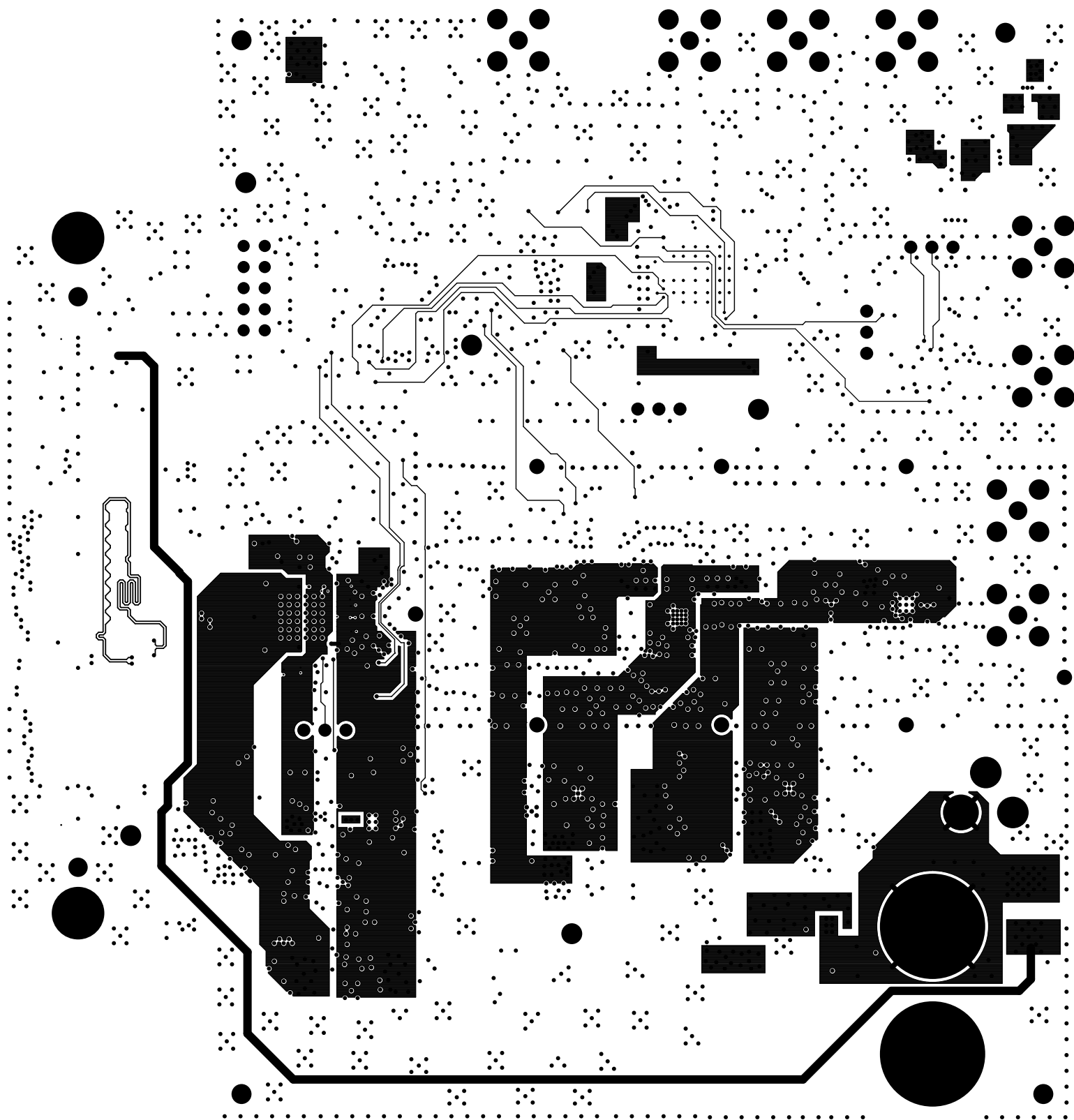
TEXAS INSTRUMENTS
TSW3085 REV B
LAYER 6 - BOTTOM SIDE



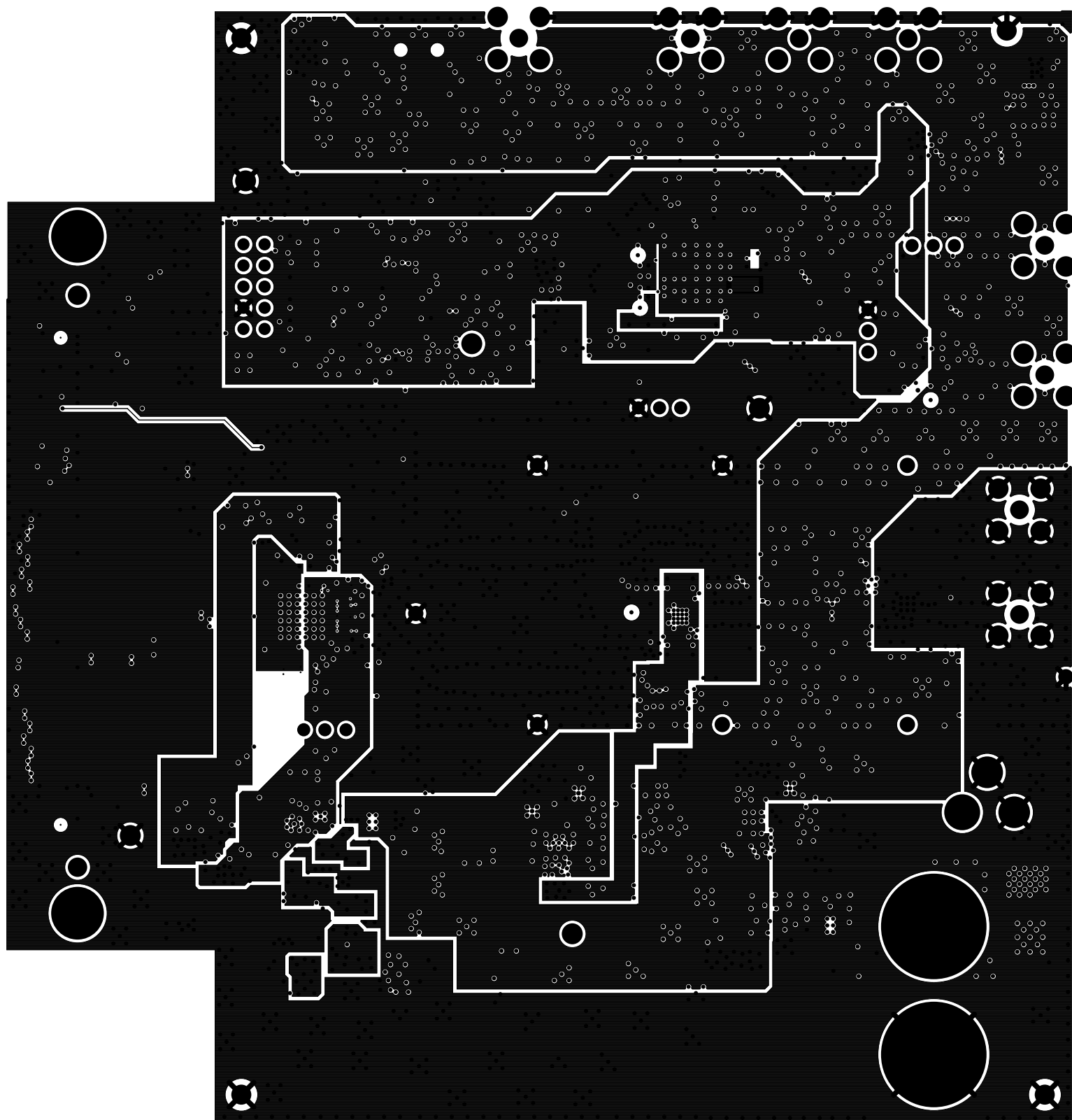
TEXAS INSTRUMENTS
TSW3085 REV B
PASTEMASK TOP



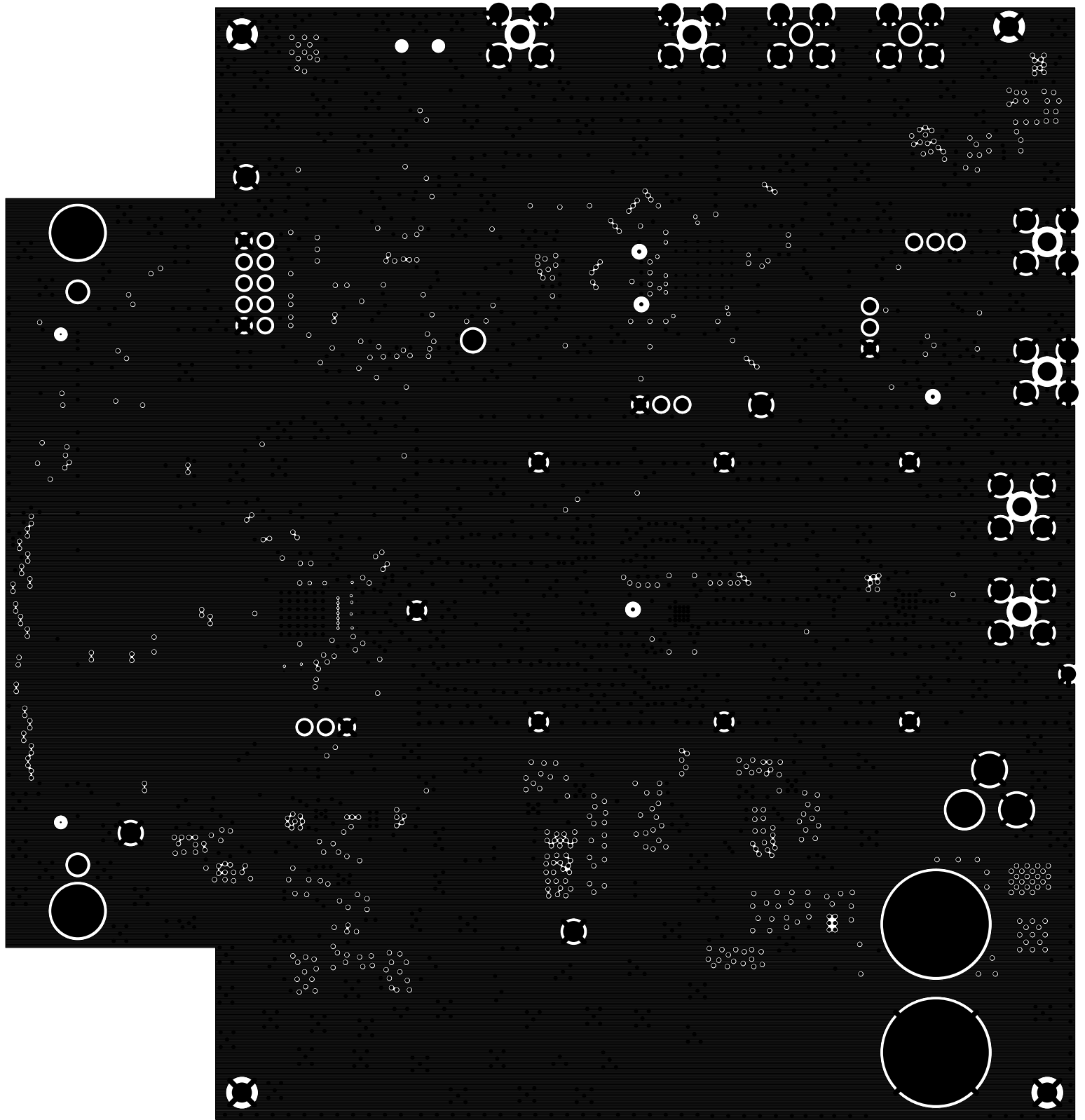
TEXAS INSTRUMENTS
TSW3085 REV B
SOLDERMASK BOTTOM



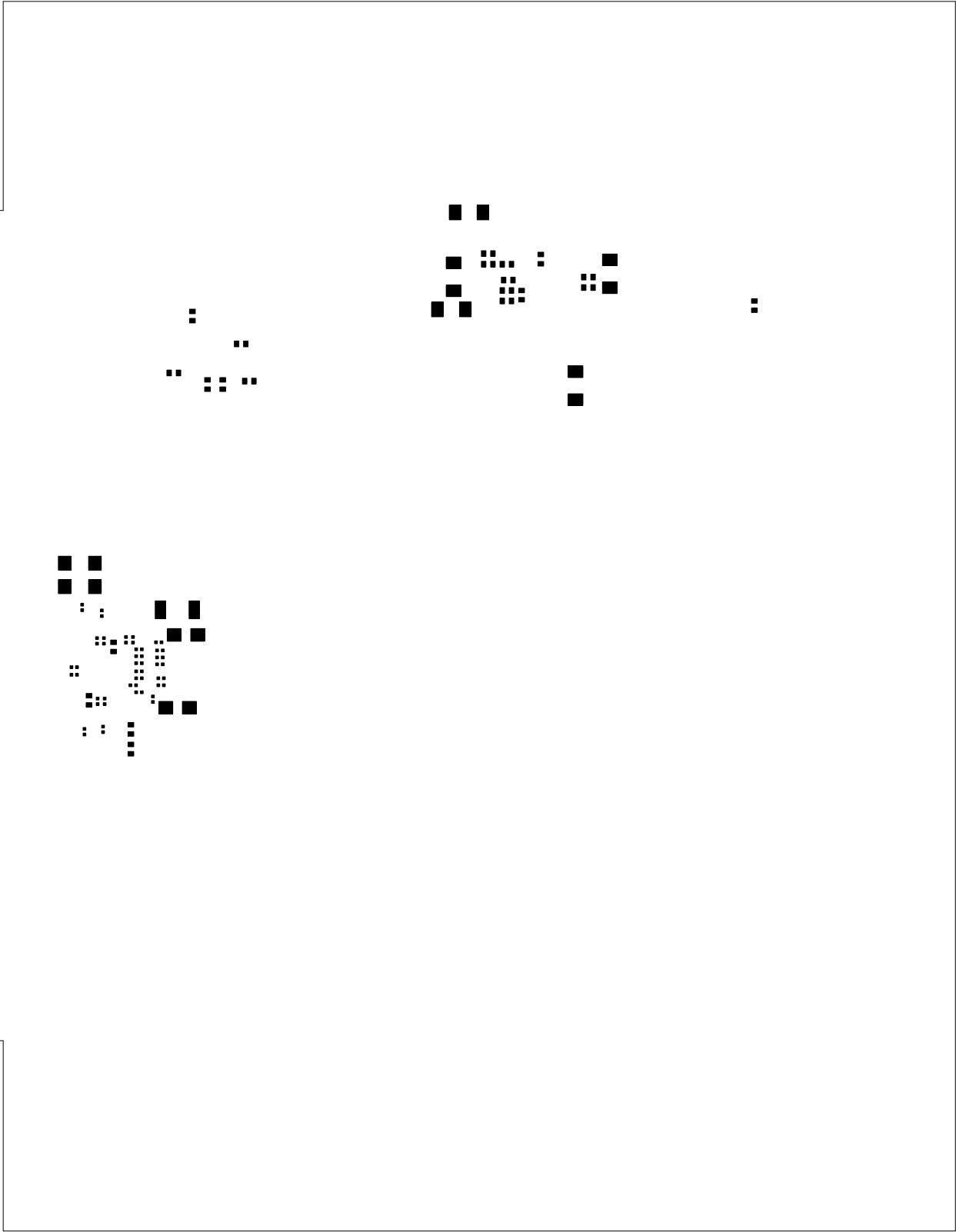
TEXAS INSTRUMENTS
TSW3085 REV B
LAYER 3 - PWR



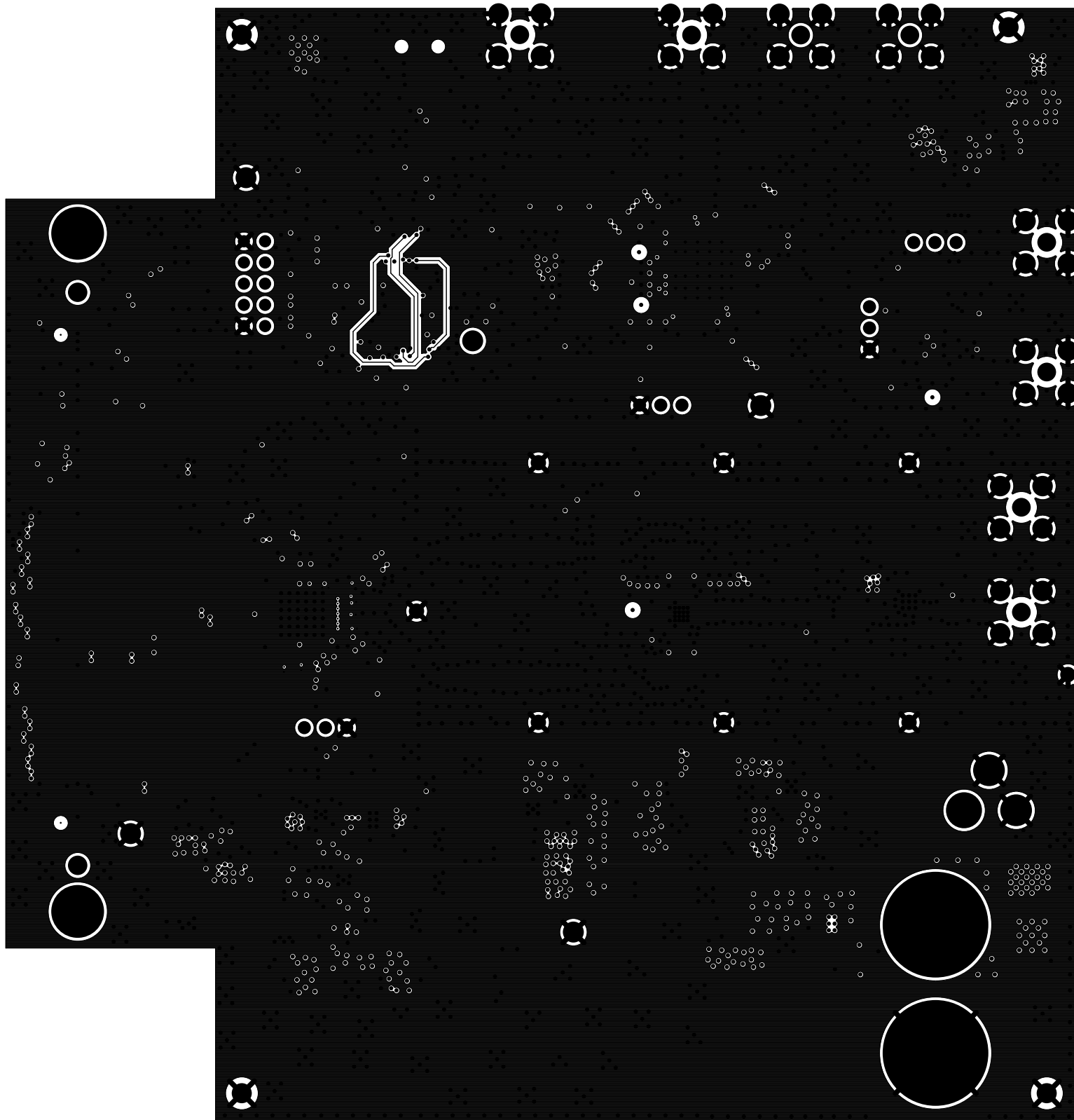
TEXAS INSTRUMENTS
TSW3085 REV B
LAYER 4 - PWR



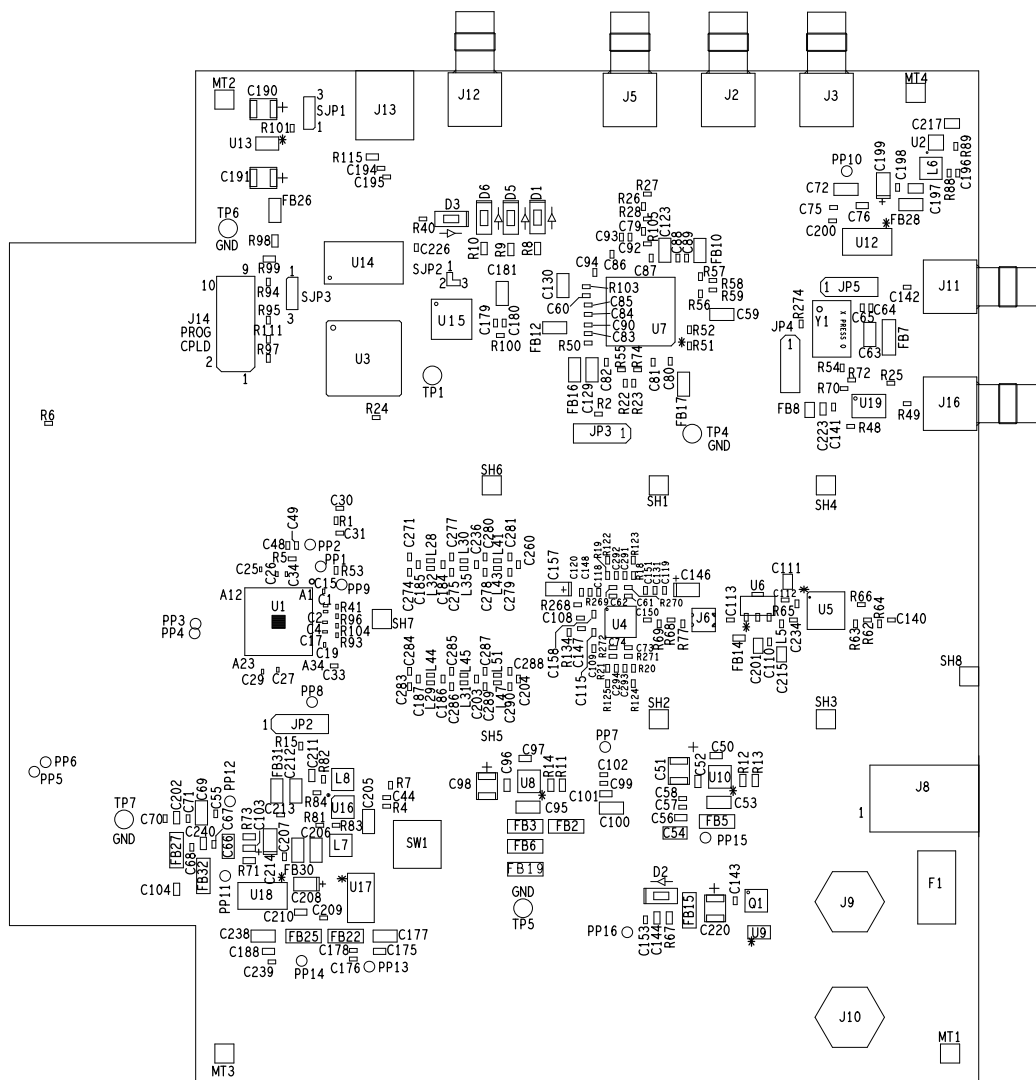
TEXAS INSTRUMENTS
TSW3085 REV B
LAYER 2 - GND



TEXAS INSTRUMENTS
TSW3085 REV B
PASTEMASK BOTTOM

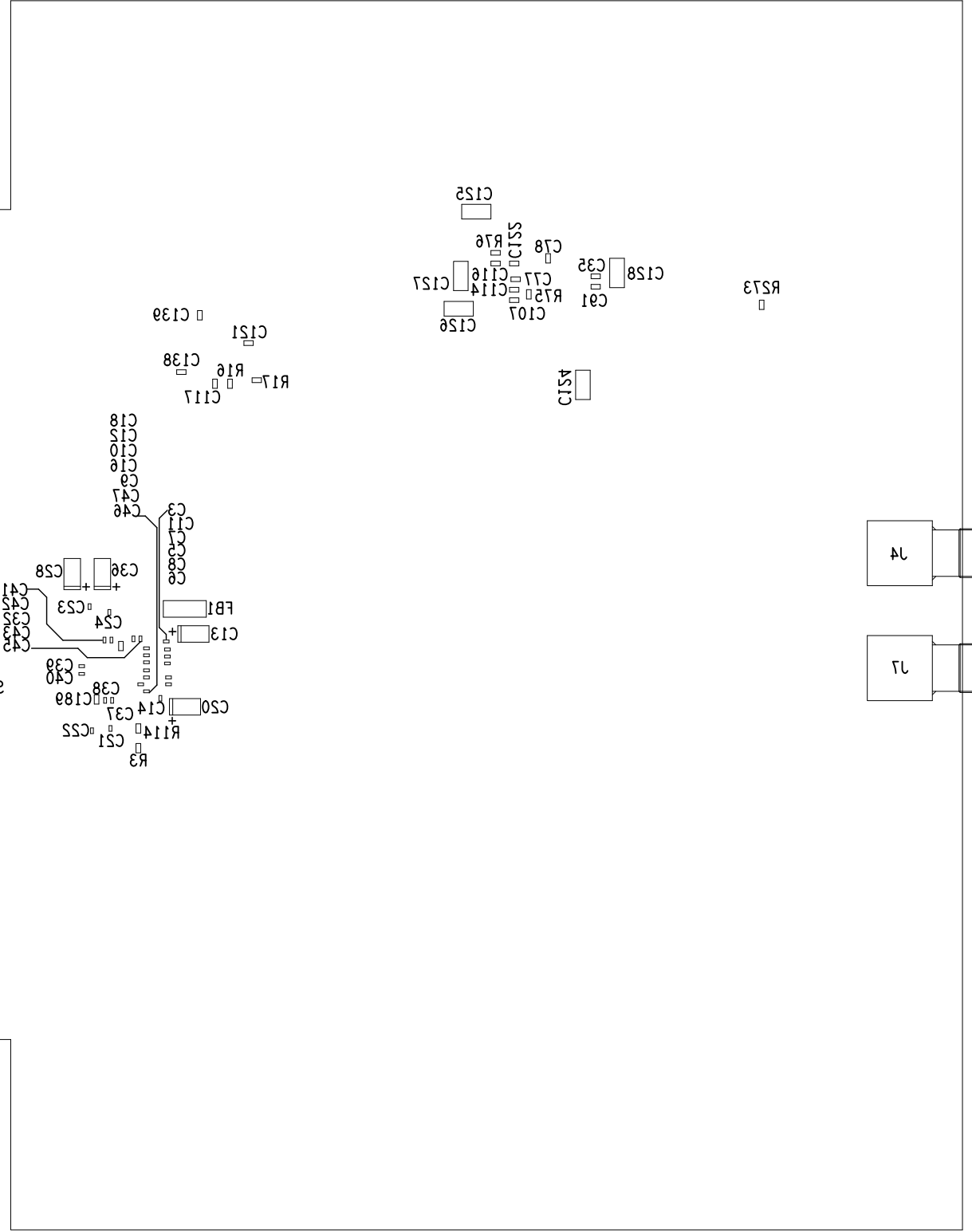
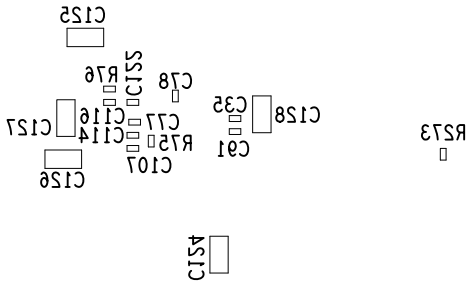
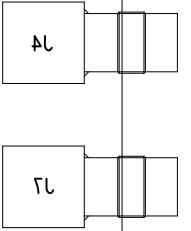


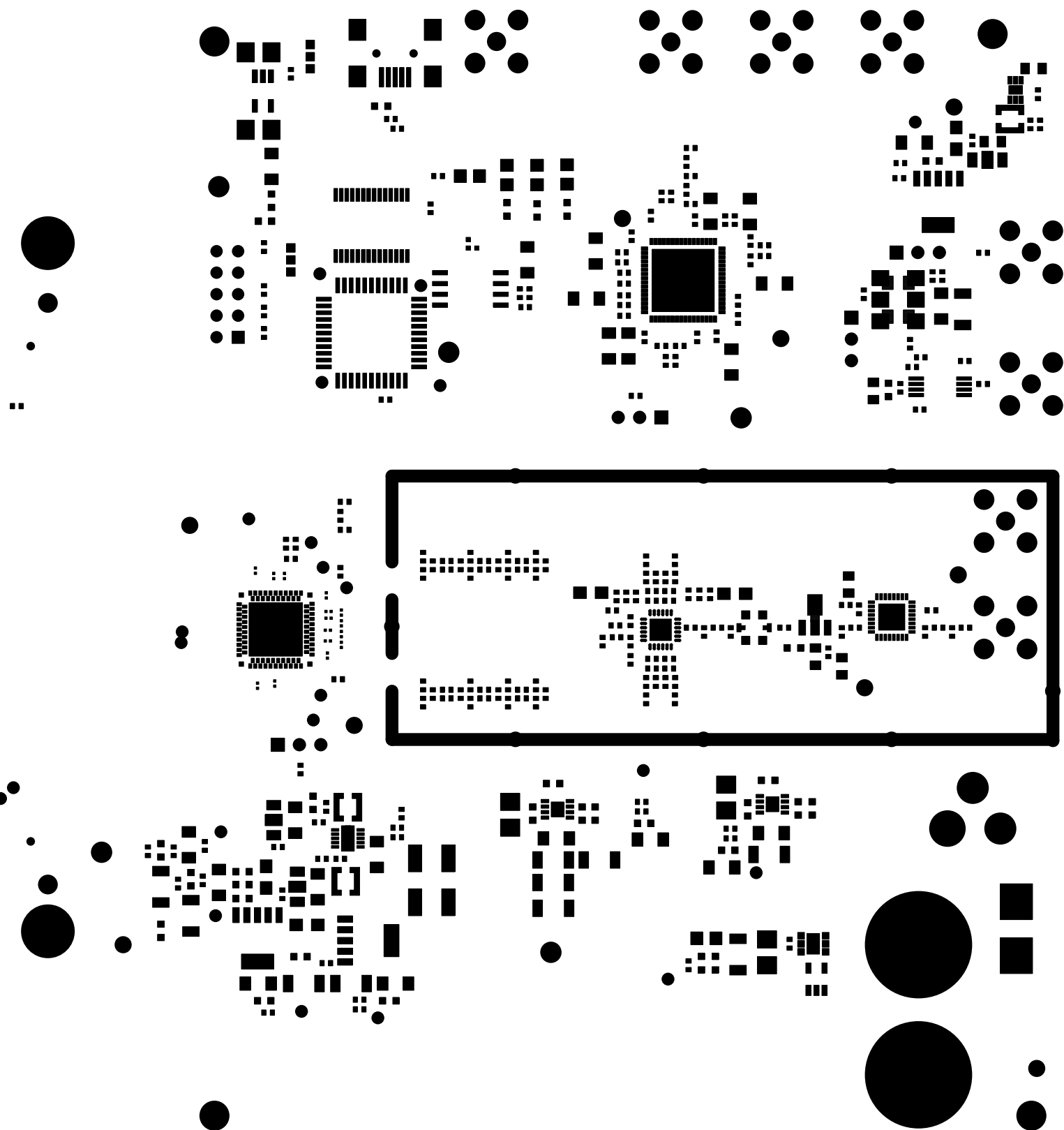
TEXAS INSTRUMENTS
TSW3085 REV B
LAYER 5 - GND



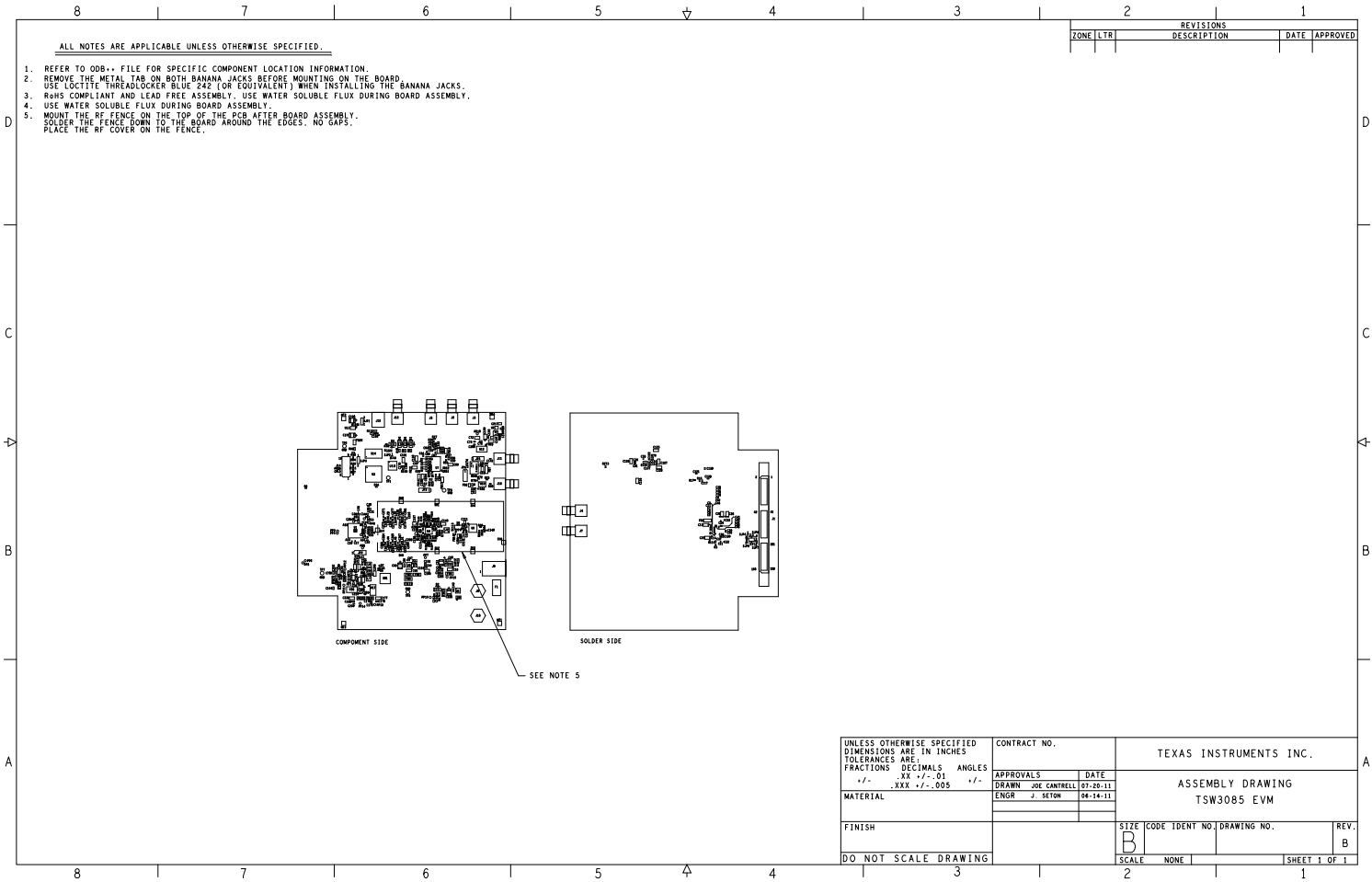
COMPONENT SIDE

SOLDER SIDE



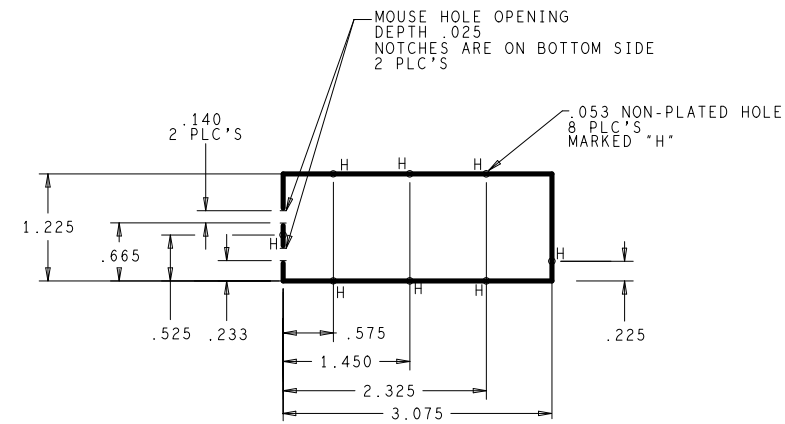


TEXAS INSTRUMENTS
TSW3085 REV B
SOLDERMASK TOP




NOTES:

1. MATERIAL: LEADER TECH FLEX-TECH NPB SLOT LOK PRO.
2. INSIDE HEIGHT: .500 OUTSIDE HEIGHT: .515
3. PULL TABS INCLUDED ON THE COVER.
4. TWO MOUSE HOLES DESIGNATED IN DESIGN ON BOTTOM SIDE.
5. FENCE DIMENSIONS DESIGNATED AT CENTERLINE.
6. SINGLE CAVITY SHIELD FRAME WITH 1 WELD.
7. STANDARD DIMPLE SPACING: .400
8. LOCATOR PINS TO BE STANDARD .040 X .060 LG



LEADER TECH P/N SL-10948 REV A

UNLESS OTHERWISE SPECIFIED	SIGNATURES	DATE	 TEXAS INSTRUMENTS DALLAS TX.				
DIMENSIONS ARE IN INCHES TOLERANCES ON: 2 PL DECIMALS $\pm .01$ 3 PL DECIMALS $\pm .005$ ANGLES FRACTIONS \pm	JV SMITH	06-16-11	RF SHIELD DWG, TSW3085 EVM				
	JIM SETON	06-16-11	SIZE B		FSCM NO	DWG NO	REV A
	DO NOT SCALE DRAWING		SCALE		SHEET 1 OF 1		

REVISIONS			
REV	DESCRIPTION	DATE	APPROVED