

DRV816x 100V Half-Bridge Smart Gate Driver with Integrated Protection and Current Sense Amplifier

1 Features

- Drives two N-channel MOSFETs in half-bridge configuration
 - High-side MOSFET source/drain up to 102V (absolute max)
 - 8V (5V DRV8162L) to 20V gate drive power supply
 - Integrated bootstrap diode
- [Functional Safety Quality-Managed](#)
 - Documentation available to aid functional safety system design
- Supports 100% PWM duty cycle with an integrated trickle charge pump
- 16-level gate drive peak current
 - 16mA - 1000mA source current
 - 32mA - 2000mA sink current
 - Source-sink current ratio 1:1, 1:2, 1:3
- Adjustable PWM dead time insertion 20ns - 900ns
- Robust design for motor phase (SH) switching
 - Slew rate 50V/ns
 - Negative transient voltage -20V
 - 2A strong gate pull down
- Split gate drive supply inputs for redundant shutdown (DRV8162, DRV8162L)
- Low-offset current sense amplifier (DRV8161)
 - Adjustable gain (5, 10, 20, 40V/V)
- Flexible PWM control interface; 2-pin PWM, 1-pin PWM, and independent PWM mode
- 13-level VDS over current threshold
- Independent shutdown pin (nDRVOFF)
- Gate driver soft shutdown sequence
- Integrated protection features
 - GVDD under voltage (GVDDUV)
 - Bootstrap under voltage (BST_UV)
 - MOSFET over current protection (VDS)
 - Shoot through protection
 - Thermal shutdown (OTSD)
 - Fault condition indicator (nFAULT)
- Supports 3.3V, and 5V Logic Inputs

2 Applications

- Industrial & collaborative robot
- Mobile robot (AGV/AMR)
- Linear motor transport systems
- [Servo Drives](#)
- [Drones](#)
- E-Bikes, E-Scooters, [E-Mobility](#)

3 Description

The DRV816x devices are half-bridge gate drivers capable of driving high-side and low-side N-channel MOSFETs. The gate drive voltages are generated from the GVDD supply pin and the integrated bootstrap circuit is used to drive the high-side FET up to 102V drain. The Smart Gate Drive architecture supports 16-level (48 combination) gate drive peak current up to 1A source and 2A sink, and a built-in timing control of gate drive current. The devices can be used to drive various types of loads including brushless/brushed DC motors, PMSM, stepper motors, SRM, and solenoids.

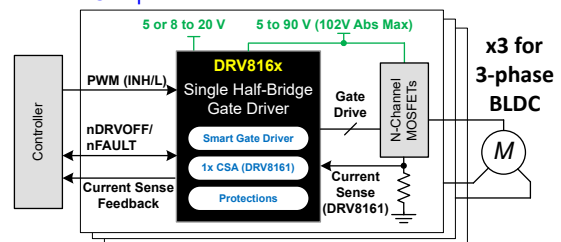
Internal protection functions are provided for supply undervoltage, FET over-current, and die over temperature. The nFAULT pin indicates fault events detected by the protection features. The nDRVOFF pin initiates power stage shutdown independent from PWM control. The DRV8162 and DRV8162L devices offer split power supply architecture to assist safe torque off (STO) function.

Many device parameters including gate drive current, dead time, PWM control interface, and over current detection are configurable with a few passive components connected to device pins. An integrated low-side current sense amplifier (DRV8161) provides current measurement information back to the controller.

Device Information

PART NUMBER	PACKAGE ⁽¹⁾	PACKAGE SIZE ⁽²⁾	BODY SIZE (NOM)
DRV8161	VSSOP (20)	5.1mm × 4.9mm	5.1mm × 3.0mm
DRV8162 ⁽³⁾	VSSOP (20)	5.1mm × 4.9mm	5.1mm × 3.0mm

- (1) For more information, see [Section 11](#)
- (2) The package size (length × width) is a nominal value and includes pins, where applicable.
- (3) Includes DRV8162 and DRV8162L device variant. See the [Device Comparison Table](#).



DRV816x Simplified Schematic

Table of Contents

1 Features	1	8.1 Application Information.....	35
2 Applications	1	8.2 Typical Application.....	35
3 Description	1	8.3 Layout.....	37
4 Device Comparison Table	3	8.4 Power Supply Recommendations.....	38
5 Pin Configuration and Functions	4	9 Device and Documentation Support	40
6 Specification	6	9.1 Device Support.....	40
6.1 Absolute Maximum Ratings.....	6	9.2 Documentation Support.....	40
6.2 ESD Ratings.....	6	9.3 Receiving Notification of Documentation Updates...	40
6.3 Recommended Operating Conditions.....	7	9.4 Support Resources.....	40
6.4 Thermal Information 1pkg.....	7	9.5 Trademarks.....	40
6.5 Electrical Characteristics.....	8	9.6 Electrostatic Discharge Caution.....	40
6.6 Timing Diagrams	13	9.7 Glossary.....	40
7 Detailed Description	15	9.8 Community Resources.....	40
7.1 Overview.....	15	10 Revision History	40
7.2 Functional Block Diagram.....	16	11 Mechanical, Packaging, and Orderable Information	41
7.3 Feature Description.....	18		
8 Application and Implementation	35		

4 Device Comparison Table

DEVICE	DEVICE VARIANT	PACKAGE PIN COUNT	CURRENT SENSE AMPLIFIER	GATE DRIVE POWER SUPPLY	MIN GVDD OPERATION	Control Mode
DRV8161	DRV8161	20	YES	GVDD	8V	2-pin, 1-pin PWM, Independent FET
DRV8162	DRV8162		No	GVDD and GVDD_LS	8V	
	DRV8162L		5V			

5 Pin Configuration and Functions

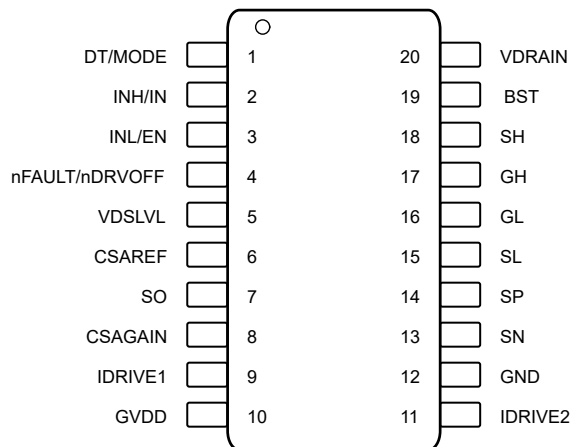


Figure 5-1. DRV8161 DGS Package 20-pin VSSOP Top View

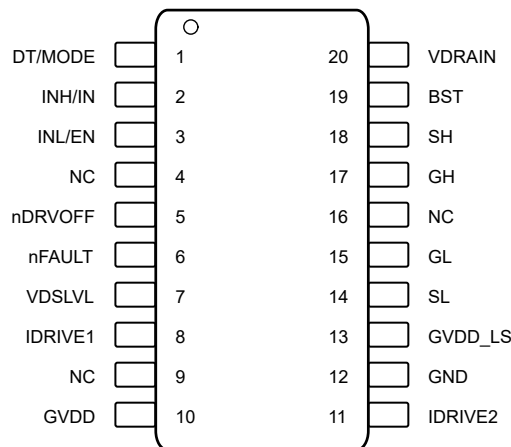


Figure 5-2. DRV8162 and DRV8162L DGS Package 20-pin VSSOP Top View

Table 5-1. Pin Functions—DRV816x Devices

NAME	PIN NO.		TYPE	DESCRIPTION
	NO.			
	DRV8161 20-pin	DRV8162, DRV8162L 20-pin		
DT/MODE	1	1	I	Selects input pin interface logic and gate drive dead time setting. Connect a resistor between DT and GND to adjust dead time between 20ns to 900ns, and select a PWM mode.
INH/IN	2	2	I	Gate driver control input. Gate driver control depends on DT/MODE pin setting.
INL/EN	3	3	I	Gate driver control input. Gate driver control depends on DT/MODE pin setting.
NC	—	4	N/A	No Connect. Leave open.
nDRVOFF	—	5	I	Gate driver shutdown control. Pulling nDRVOFF low turns off high-side and low-side external MOSFETs by putting the gate drivers into the pull-down state.
nFAULT/ nDRVOFF	4	—	I/OD	Shared fault indicator pin and gate driver shutdown pin. Connect this pin to an external pull-up resistor to the controller supply or a controller output pin. This pin is pulled logic low during a fault condition. To active gate drive shutdown, pull the pin low by external logic.
nFAULT	—	6	OD	Fault indicator output. This pin is pulled logic low during a fault condition and requires an external pull-up resistor to controller I/O supply, 3.3V to 5.0V.
VDSLVL	5	7	I	VDS monitor threshold setting. This pin is a multilevel input pin set by an external resistor.
CSAREF	6	—	PWR	Current sense amplifier reference. Connect a capacitor between the CSAREF and GND pins.
SO	7	—	O	Current sense amplifier output.
CSAGAIN	8	—	I	Gain settings for current sense amplifier. This pin is a multilevel input pin set by an external resistor.
IDRIVE1	9	8	I	Gate drive source and sink current setting. This pin is a multilevel input pin set by an external resistor.
NC	—	9, 16		No Connect. Leave open.
GVDD	10	10	PWR	Gate driver power supply input. Connect a capacitor between the GVDD and GND pins.
IDRIVE2	11	11	I	Gate drive source and sink current setting. This pin is a multilevel input pin set by an external resistor.

Table 5-1. Pin Functions—DRV816x Devices (continued)

NAME	PIN		TYPE	DESCRIPTION
	NO.			
	DRV8161 20-pin	DRV8162, DRV8162L 20-pin		
GND	12	12	PWR	Device ground.
GVDD_LS	—	13	PWR	Low-side gate driver power supply input (DRV8162 and DRV8162L only). Connect a capacitor between the GVDD_LS and GND pins.
SN	13	—	I	Current sense amplifier input. Connect to the low-side of the current shunt resistor.
SP	14	—	I	Current shunt amplifier input. Connect to the low-side power MOSFET source and high-side of the current shunt resistor.
SL	15	14	I	Low-side source pin. Connect to the low-side power MOSFET source. This pin is an input for the VDS monitor and the output for the low-side gate driver sink.
GL	16	15	O	Low-side gate driver output. Connect to the gate of the low-side power MOSFET.
GH	17	17	O	High-side gate driver output. Connect to the gate of the high-side power MOSFET.
SH	18	18	I	High-side source pin. Connect to the high-side power MOSFET source. This pin is an input for the VDS monitor and the output for the high-side gate driver sink.
BST	19	19	O	Bootstrap output pin. Connect a capacitor between BST and SH.
VDRAIN	20	20	PWR	High-side MOSFET drain sense input for VDS monitor and charge pump reference. Connect to the high-side MOSFET drain.

PWR = power, I = input, O = output, NC = no connection, OD = open-drain output

6 Specification

6.1 Absolute Maximum Ratings

Over recommended operating conditions (unless otherwise noted)⁽¹⁾

		MIN	MAX	UNIT
Gate driver regulator pin voltage	GVDD, GVDD_LS	-0.3	20	V
High-side drain pin voltage	VDRAIN, T _J = 25°C	-0.3	102	V
Bootstrap pin voltage	BST, T _J = 25°C	-0.3	115	V
Bootstrap pin voltage	BST with respect to SH	-0.3	20	V
Logic pin voltage	nFAULT	-0.3	20	V
	INH(IN), INL(EN), nDRVOFF, VDSSLVL	-0.3	20	
	DT/MODE, IDRIVE1, IDRIVE2, CSAGAIN	-0.3	6	
High-side gate drive pin voltage	GH, T _J = 25°C GVDD >= 11V	-5	115	V
High-side gate drive pin voltage	GH with respect to SH	-0.3	20	V
High-side source pin voltage	SH, DC	-5	105	V
Transient high-side source pin negative voltage	SH, 1 μs	-20		V
High-side source pin slew rate	SH, V _{BST-SH} >3.5V		50	V/ns
Low-side gate drive pin voltage	GL with respect to SL	-0.3	20	V
Low-side source sense pin voltage	SL	-5	V _{GVDD} +0.3	V
Transient low-side source sense pin negative voltage	SL, 1 μs	-16		V
Current sense amplifier reference input pin voltage	CSAREF	-0.3	5.5	V
Shunt amplifier input pin voltage	SN, SP	-1	1	V
Transient 500-ns shunt amplifier input pin voltage	SN, SP, 500ns	-16	20	V
Shunt amplifier output pin voltage	SO	-0.3	V _{CSAREF} + 0.3	V
Junction temperature, T _J		-40	150	°C
Storage temperature, T _{stg}		-65	150	°C

- (1) Operation outside the Absolute Maximum Ratings may cause permanent device damage. Absolute Maximum Ratings do not imply functional operation of the device at these or any other conditions beyond those listed under Recommended Operating Conditions. If used outside the Recommended Operating Conditions but within the Absolute Maximum Ratings, the device may not be fully functional, and this may affect device reliability, functionality, performance, and shorten the device lifetime

6.2 ESD Ratings

			VALUE	UNIT
V _(ESD)	Electrostatic discharge	Human body model (HBM), per ANSI/ESDA/JEDEC JS-001 ⁽¹⁾	±2000	V
		Charged device model (CDM), per ANSI/ESDA/JEDEC JS-002 ⁽²⁾	±250	

- (1) JEDEC document JEP155 states that 500-V HBM allows safe manufacturing with a standard ESD control process.
 (2) JEDEC document JEP157 states that 250-V CDM allows safe manufacturing with a standard ESD control process.

6.3 Recommended Operating Conditions

over operating temperature range (unless otherwise noted)

			MIN	NOM	MAX	UNIT
V _{GVDD}	Power supply voltage	GVDD, GVDD_LS	8		20	V
	Power supply voltage (DRV8162L only)	GVDD, GVDD_LS, DRV8162L device variant	5			V
V _{GVDD-SL}	Power supply voltage with respect to SL	GVDD(DRV8161), GVDD_LS (DRV8162x) for low-side Pre-Driver PWM operation	3.5			V
V _{VDRAIN}	High-side drain pin voltage	VDRAIN, low-side gate drive, and high-side gate drive switching with bootstrap	0		90	V
V _{BST-SH}	Bootstrap pin voltage with respect to SH	BST (V _{BST} - V _{SH}), high-side gate drive switching and no BST_UV detection, V _{BST-SH} min > V _{BST_UV} max (rising),	6.1		20	V
	Bootstrap pin voltage with respect to SH (DRV8162L only)	BST (V _{BST} - V _{SH}), DRV8162L device variant only, high-side gate drive switching and no BST_UV detection, V _{BST-SH} min > V _{BST_UV} max (rising)	4.6			V
V _{BST}	Bootstrap pin voltage	BST	0		105	V
V _{SH}	High-side source pin voltage	SH	-2		95	V
V _I	Digital / Pin detection input voltage	INH, INL, IDRIVE1, IDRIVE2, CSAGAIN, VDSLVL, nDRVOFF, DT/MODE	0		5.5	V
V _{OD}	Open drain pullup voltage	nFAULT			5.5	V
I _{OD}	Open drain output current	nFAULT			-5	mA
V _{CSAREF}	Current sense amplifier reference voltage	CSAREF	3.0		5.5	V
T _A	Operating ambient temperature		-40		125	°C
T _J	Operating junction temperature		-40		150	°C

6.4 Thermal Information 1pkg

THERMAL METRIC ⁽¹⁾		DRV8161/DRV8162	UNIT
		DGS (VSSOP)	
		20 PINS	
R _{θJA}	Junction-to-ambient thermal resistance	87.0	°C/W
R _{θJC(top)}	Junction-to-case (top) thermal resistance	31.2	°C/W
R _{θJB}	Junction-to-board thermal resistance	42.3	°C/W
Ψ _{JT}	Junction-to-top characterization parameter	0.9	°C/W
Ψ _{JB}	Junction-to-board characterization parameter	41.9	°C/W
R _{θJC(bot)}	Junction-to-case (bottom) thermal resistance	N/A	°C/W

(1) For more information about traditional and new thermal metrics, see the [Semiconductor and IC Package Thermal Metrics](#) application report.

6.5 Electrical Characteristics

$V_{GVDD} = 12\text{ V}$ $V_{VDRAIN} = 48\text{ V}$ $T_J = 25^\circ\text{C}$ (unless otherwise noted)

PARAMETER		TEST CONDITIONS	MIN	TYP	MAX	UNIT
POWER SUPPLIES (GVDD, BST)						
$I_{VDRAIN_UNP_WR}$	VDRAIN leakage current under GVDD unpowered	GVDD = 0V, VDRAIN = 48V, $V_{BST-SH} = 0\text{V}$ Leakage current of VDRAIN + SH		3.5	5	μA
I_{GVDD}	GVDD active mode current	INH = INL = Switching @ 20kHz; $V_{BST} = V_{GVDD}$; NO FETs connected, DT/MODE Pin open. $V_{DS_LVL} = 2\text{V}$		2		mA
t_{WAKE}	Turnon time	GVDD = 0V to 12V GVDD_UV to active mode (outputs ready) (nFAULT = High)		0.4		ms
I_{LBS_TCPON}	Bootstrap pin leakage current during high-side pull-up	INH = high; TCP_ON		30		μA
LOGIC-LEVEL INPUTS (INH, INL, nDRVOFF)						
V_{IL}	Input logic low voltage	INL, INH, nDRVOFF			0.8	V
V_{IH}	Input logic high voltage	INL, INH, nDRVOFF	2.2			V
R_{PU}	Input pullup resistance	nDRVOFF to internal regulator, no external connection		250		k Ω
R_{PD}	Input pulldown resistance	INH, INL to GND		250		k Ω
$t_{nDRVOFF_DEG}$	nDRVOFF input deglitch time	DRVOFF falling and rising	1	2.1	4.2	μs
$t_{nDRVOFF_DIAG}$	nDRVOFF diagnostic pulse valid input time	DRV8162 and DRV8162L only		0.5		μs
OPEN-DRAIN OUTPUT (nFAULT)						
V_{OL}	Output logic low voltage	$I_{OD} = 5\text{ mA}$, $GVDD > 4\text{V}$			0.4	V
BOOTSTRAP DIODE (BST)						
V_{BOOTD}	Bootstrap diode forward voltage	$I_{BOOT} = 100\ \mu\text{A}$			0.82	V
V_{BOOTD}	Bootstrap diode forward voltage	$I_{BOOT} = 100\text{ mA}$			1.6	V
R_{BOOTD}	Bootstrap dynamic resistance ($\Delta V_{BOOTD}/\Delta I_{BOOT}$)	$I_{BOOT} = 100\text{ mA}$ and 50 mA	3.9	4.8	9	Ω
CHARGE PUMP (BST)						
V_{TCP}	Trickle charge pump output voltage	V_{BST-SH} , INH = High, SH = VDRAIN = 20V, BST > GVDD, External load $I_{TRICKLE} = 2\ \mu\text{A}$	9.5	10.6	12	V
t_{TCP_DLY}	Trickle charge pump active delay time	INL = Low	150	250	350	μs
GATE DRIVERS (GH, GL, SH, SL)						
V_{GSHX_LO}	High-side gate drive low level voltage ($V_{GH} - V_{SH}$)	$I_{GHX} = -10\text{ mA}$; $V_{GVDD} = 12\text{V}$; IDRIVE = 1000mA, No FETs connected	0	0.022	0.2	V
V_{GSHX_HI}	High-side gate drive high level voltage ($V_{BST} - V_{GH}$)	$I_{GHX} = 10\text{ mA}$; $V_{GVDD} = 12\text{V}$; IDRIVE = 500mA, No FETs connected	0	0.09	0.2	V
V_{GSLX_LO}	Low-side gate drive low level voltage ($V_{GL} - V_{SL}$)	$I_{GLX} = -10\text{ mA}$; $V_{GVDD} = 12\text{V}$; IDRIVE = 1000mA, No FETs connected	0	0.022	0.2	V
V_{GSLX_HI}	Low-side gate drive high level voltage ($V_{GVDD} - V_{GL}$)	$I_{GLX} = 10\text{ mA}$; $V_{GVDD} = 12\text{V}$; IDRIVE = 500mA, No FETs connected	0	0.09	0.2	V

$V_{GVDD} = 12\text{ V}$ $V_{VDRAIN} = 48\text{ V}$ $T_J = 25^\circ\text{C}$ (unless otherwise noted)

PARAMETER		TEST CONDITIONS	MIN	TYP	MAX	UNIT
$I_{DRIVEP0}$	Peak source gate current	$V_{BST}-V_{SH} = V_{GVDD} = 12\text{V}$, $T_J = -40^\circ\text{C}$ to 150°C	9	16	26	mA
$I_{DRIVEP1}$		$V_{BST}-V_{SH} = V_{GVDD} = 12\text{V}$, $T_J = -40^\circ\text{C}$ to 150°C	19	32	52	mA
$I_{DRIVEP2}$		$V_{BST}-V_{SH} = V_{GVDD} = 12\text{V}$, $T_J = -40^\circ\text{C}$ to 150°C	38	64	103	mA
$I_{DRIVEP3}$		$V_{BST}-V_{SH} = V_{GVDD} = 12\text{V}$, $T_J = -40^\circ\text{C}$ to 150°C	57	96	154	mA
$I_{DRIVEP4}$		$V_{BST}-V_{SH} = V_{GVDD} = 12\text{V}$, $T_J = -40^\circ\text{C}$ to 150°C	76	128	205	mA
$I_{DRIVEP5}$		$V_{BST}-V_{SH} = V_{GVDD} = 12\text{V}$, $T_J = -40^\circ\text{C}$ to 150°C	96	160	256	mA
$I_{DRIVEP6}$		$V_{BST}-V_{SH} = V_{GVDD} = 12\text{V}$, $T_J = -40^\circ\text{C}$ to 150°C	115	192	308	mA
$I_{DRIVEP7}$		$V_{BST}-V_{SH} = V_{GVDD} = 12\text{V}$, $T_J = -40^\circ\text{C}$ to 150°C	134	224	359	mA
$I_{DRIVEP8}$		$V_{BST}-V_{SH} = V_{GVDD} = 12\text{V}$, $T_J = -40^\circ\text{C}$ to 150°C	153	256	410	mA
$I_{DRIVEP9}$		$V_{BST}-V_{SH} = V_{GVDD} = 12\text{V}$, $T_J = -40^\circ\text{C}$ to 150°C	172	288	461	mA
$I_{DRIVEP10}$		$V_{BST}-V_{SH} = V_{GVDD} = 12\text{V}$, $T_J = -40^\circ\text{C}$ to 150°C	192	320	512	mA
$I_{DRIVEP11}$		$V_{BST}-V_{SH} = V_{GVDD} = 12\text{V}$, $T_J = -40^\circ\text{C}$ to 150°C	230	384	615	mA
$I_{DRIVEP12}$		$V_{BST}-V_{SH} = V_{GVDD} = 12\text{V}$, $T_J = -40^\circ\text{C}$ to 150°C	268	448	717	mA
$I_{DRIVEP13}$		$V_{BST}-V_{SH} = V_{GVDD} = 12\text{V}$, $T_J = -40^\circ\text{C}$ to 150°C	307	512	820	mA
$I_{DRIVEP14}$		$V_{BST}-V_{SH} = V_{GVDD} = 12\text{V}$, $T_J = -40^\circ\text{C}$ to 150°C	460	768	1229	mA
$I_{DRIVEP15}$	$V_{BST}-V_{SH} = V_{GVDD} = 12\text{V}$, $T_J = -40^\circ\text{C}$ to 150°C	614	1024	1639	mA	

DRV8161, DRV8162

SLVSGZ1C – MAY 2024 – REVISED FEBRUARY 2025

 $V_{GVDD} = 12\text{ V}$ $V_{VDRAIN} = 48\text{ V}$ $T_J = 25^\circ\text{C}$ (unless otherwise noted)

PARAMETER		TEST CONDITIONS	MIN	TYP	MAX	UNIT
$I_{DRIVEN0}$	Peak sink gate current	$V_{BST}-V_{SH} = V_{GVDD} = 12\text{V}$, $T_J = -40^\circ\text{C}$ to 150°C	19	32	52	mA
$I_{DRIVEN1}$		$V_{BST}-V_{SH} = V_{GVDD} = 12\text{V}$, $T_J = -40^\circ\text{C}$ to 150°C	38	64	103	mA
$I_{DRIVEN2}$		$V_{BST}-V_{SH} = V_{GVDD} = 12\text{V}$, $T_J = -40^\circ\text{C}$ to 150°C	76	128	205	mA
$I_{DRIVEN3}$		$V_{BST}-V_{SH} = V_{GVDD} = 12\text{V}$, $T_J = -40^\circ\text{C}$ to 150°C	115	192	308	mA
$I_{DRIVEN4}$		$V_{BST}-V_{SH} = V_{GVDD} = 12\text{V}$, $T_J = -40^\circ\text{C}$ to 150°C	153	256	410	mA
$I_{DRIVEN5}$		$V_{BST}-V_{SH} = V_{GVDD} = 12\text{V}$, $T_J = -40^\circ\text{C}$ to 150°C	192	320	512	mA
$I_{DRIVEN6}$		$V_{BST}-V_{SH} = V_{GVDD} = 12\text{V}$, $T_J = -40^\circ\text{C}$ to 150°C	230	384	615	mA
$I_{DRIVEN7}$		$V_{BST}-V_{SH} = V_{GVDD} = 12\text{V}$, $T_J = -40^\circ\text{C}$ to 150°C	268	448	717	mA
$I_{DRIVEN8}$		$V_{BST}-V_{SH} = V_{GVDD} = 12\text{V}$, $T_J = -40^\circ\text{C}$ to 150°C	307	512	820	mA
$I_{DRIVEN9}$		$V_{BST}-V_{SH} = V_{GVDD} = 12\text{V}$, $T_J = -40^\circ\text{C}$ to 150°C	345	576	922	mA
$I_{DRIVEN10}$		$V_{BST}-V_{SH} = V_{GVDD} = 12\text{V}$, $T_J = -40^\circ\text{C}$ to 150°C	384	640	1024	mA
$I_{DRIVEN11}$		$V_{BST}-V_{SH} = V_{GVDD} = 12\text{V}$, $T_J = -40^\circ\text{C}$ to 150°C	460	768	1229	mA
$I_{DRIVEN12}$		$V_{BST}-V_{SH} = V_{GVDD} = 12\text{V}$, $T_J = -40^\circ\text{C}$ to 150°C	537	896	1434	mA
$I_{DRIVEN13}$		$V_{BST}-V_{SH} = V_{GVDD} = 12\text{V}$, $T_J = -40^\circ\text{C}$ to 150°C	614	1024	1639	mA
$I_{DRIVEN14}$		$V_{BST}-V_{SH} = V_{GVDD} = 12\text{V}$, $T_J = -40^\circ\text{C}$ to 150°C	921	1536	2458	mA
$I_{DRIVEN15}$		$V_{BST}-V_{SH} = V_{GVDD} = 12\text{V}$, $T_J = -40^\circ\text{C}$ to 150°C	1228	2048	3277	mA
R_{PD_LS}	Low-side passive pull down	GL to SL, $V_{GL} - V_{SL} = 2\text{V}$	60	85	120	k Ω
R_{PDSA_HS}	High-side semiactive pull down	$V_{GVDD} < V_{GVDD_UV}$ GH to SH, $V_{GH} - V_{SH} = 2\text{V}$	2	4	8	k Ω
I_{PUHOLD_HS}	High-side pull-up hold current	$T_J = -40^\circ\text{C}$ to 150°C	307	512	820	mA
I_{PDHOLD_HS}	High-side pull-down hold current	$T_J = -40^\circ\text{C}$ to 150°C	1228	2048	3277	mA
$I_{PDSTRONG_L_S}$	Low-side pull-down strong current	$T_J = -40^\circ\text{C}$ to 150°C	1228	2048	3277	mA
$I_{PDSTRONG_H_S}$	High-side pull-down strong current	$T_J = -40^\circ\text{C}$ to 150°C	1228	2048	3277	mA
$I_{DRIVENS_D_L_S}$	Low-side peak sink gate shutdown current	$I_{DRIVENx}$ is set to $I_{DRIVEN13}$ (1024mA Typ) or smaller settings		32		mA
$I_{DRIVENS_D_L_S}$	Low-side peak sink gate shutdown current	$I_{DRIVENx}$ is set to $I_{DRIVEN14}$ (1536mA Typ) or $I_{DRIVEN15}$ (2048mA Typ)		64		mA
$I_{DRIVENS_D_H_S}$	High-side peak sink gate shutdown current	$I_{DRIVENx}$ is set to $I_{DRIVEN13}$ (1024mA Typ) or smaller settings		32		mA
$I_{DRIVENS_D_H_S}$	High-side peak sink gate shutdown current	$I_{DRIVENx}$ is set to $I_{DRIVEN14}$ (1536mA Typ) or $I_{DRIVEN15}$ (2048mA Typ)		64		mA
GATE DRIVERS TIMINGS						
t_{PDR_LS}	Low-side rising propagation delay	INL to GL rising, $V_{GVDD} > 8\text{V}$	25	40	80	ns
t_{PDF_LS}	Low-side falling propagation delay	INL to GL falling, $V_{GVDD} > 8\text{V}$	25	41	80	ns

$V_{GVDD} = 12\text{ V}$ $V_{VDRAIN} = 48\text{ V}$ $T_J = 25^\circ\text{C}$ (unless otherwise noted)

PARAMETER		TEST CONDITIONS	MIN	TYP	MAX	UNIT
t_{PDR_HS}	High-side rising propagation delay	INH to GH rising, $V_{GVDD} = V_{BST} - V_{SH} > 8\text{V}$	25	41	80	ns
t_{PDF_HS}	High-side falling propagation delay	INH to GH falling, $V_{GVDD} = V_{BST} - V_{SH} > 8\text{V}$	25	42	80	ns
t_{PD_MATCH}	Matching propagation delay of low-side gate driver	GL turning ON to GL turning OFF, From $V_{GL-SL} = 1\text{V}$ to $V_{GL-SL} = V_{GVDD} - 1\text{V}$; $V_{GVDD} = V_{BST} - V_{SH} > 8\text{V}$; $V_{SH} = 0\text{V}$ to 90V , no load on GH and GL	-10	± 4	10	ns
	Matching propagation delay of high-side gate driver	GH turning ON to GH turning OFF, From $V_{GH-SH} = 1\text{V}$ to $V_{GH-SH} = V_{BST-SH} - 1\text{V}$; $V_{GVDD} = V_{BST} - V_{SH} > 8\text{V}$; $V_{SH} = 0\text{V}$ to 90V , no load on GH and GL	-10	± 4	10	ns
$t_{PD_MATCH_PH}$	Matching propagation delay per phase	Deadtime disabled. GL turning OFF to GH turning ON, From $V_{GL-SL} = V_{GVDD} - 1\text{V}$ to $V_{GH-SH} = 1\text{V}$; $V_{GVDD} = V_{BST} - V_{SH} > 8\text{V}$; $V_{SH} = 0\text{V}$ to 90V , no load on GH and GL, dead time disabled	-12	± 4	12	ns
		Deadtime disabled. GH turning OFF to GL turning ON, From $V_{GH-SH} = V_{BST-SH} - 1\text{V}$ to $V_{GL-SL} = 1\text{V}$; $V_{GVDD} = V_{BST} - V_{SH} > 8\text{V}$; $V_{SH} = 0\text{V}$ to 90V , no load on GH and GL	-10	± 4	10	ns
t_{DEAD}	Gate drive dead time	$R_{DT} = 470\ \Omega$ 2-pin PWM mode;		20		ns
t_{DEAD}	Gate drive dead time	$R_{DT} = 1.3\ \text{k}\Omega$ 2-pin PWM mode;	97	100	120	ns
t_{DEAD}	Gate drive dead time	$R_{DT} = 3.3\ \text{k}\Omega$ 2-pin PWM mode;	316	370	422	ns
t_{DEAD_CFG}	Gate drive dead time configuration range	Tdead linear setting $R_{DT} = 10\ \text{k}\Omega$ - $1\ \text{M}\Omega$, 1-pin PWM mode	20		900	ns
t_{DEAD}	Gate drive dead time	$R_{DT} = 990\ \text{k}\Omega$ 1-pin PWM mode; $T_J = -40^\circ\text{C}$ to 150°C	700	900	1250	ns
$t_{MINDEAD_VGS_HS}$	Minimum gate drive dead time (shortest available) of VGS monitor mode; HS falling to LS rising	VGS monitor dead time insertion mode. $t_{DEAD_CFG} < 130\text{ns}$, $V_{GVDD} > 8\text{V}$, $V_{BST-SH} > 8\text{V}$; $0\text{V} < V_{SH} = < 90\text{V}$		215		ns
$t_{MINDEAD_VGS_LS}$	Minimum gate drive dead time (shortest available) of VGS monitor mode; LS falling to HS rising	VGS monitor dead time insertion; $t_{DEAD_CFG} < 130\text{ns}$, $V_{GVDD} > 8\text{V}$, $V_{BST-SH} > 8\text{V}$; $0\text{V} < V_{SH} = < 90\text{V}$		225		ns
t_{DRVN_SD}	Gate driver pulldown timing during shutdown			20		μs
CURRENT SHUNT AMPLIFIERS (SN, SO, SP, CSAREF)						
A_{CSA}	Sense amplifier gain	CSAGAIN = Tied to GND (LEVEL0)		5		V/V
		CSAGAIN = $10\text{k}\Omega$ typ tied to GND (LEVEL1)		10		V/V
		CSAGAIN = $30\text{k}\Omega$ typ tied to GND (LEVEL2)		20		V/V
		CSAGAIN = open; (LEVEL3)		40		V/V
$A_{CSA_ERR_DRIFT}$	Sense amplifier gain error temperature drift	$T_J = -40^\circ\text{C}$ to 150°C	-70		70	ppm/ $^\circ\text{C}$
t_{SET}	Settling time to $\pm 1\%$	$V_{STEP} = 1.6\ \text{V}$, $A_{CSA} = 5\ \text{V/V}$, $C_{SO} = 500\text{pF}$		0.6		μs
		$V_{STEP} = 1.6\ \text{V}$, $A_{CSA} = 40\ \text{V/V}$, $C_{SO} = 500\text{pF}$		0.8		μs
BW	Bandwidth	$A_{CSA} = 5\ \text{V/V}$, $C_{LOAD} = 60\text{-pF}$, small signal -3 dB	3	5	7	MHz
V_{SWING}	Output voltage range	$V_{CSAREF} = 3$ to $5.5\ \text{V}$	0.25		$V_{CSAREF} - 0.25$	V
V_{COM}	Common-mode input range		-0.225		0.225	V

DRV8161, DRV8162

SLVSGZ1C – MAY 2024 – REVISED FEBRUARY 2025

 $V_{GVDD} = 12\text{ V}$ $V_{VDRAIN} = 48\text{ V}$ $T_J = 25^\circ\text{C}$ (unless otherwise noted)

PARAMETER		TEST CONDITIONS	MIN	TYP	MAX	UNIT
V_{OFF}	Input offset voltage	$V_{SP} = V_{SN} = \text{GND}$; $T_J = 25^\circ\text{C}$, Gain $A_{CSA} = 10, 20, 40\text{ V/V}$	-1.94		1.94	mV
V_{OFF}	Input offset voltage	$V_{SP} = V_{SN} = \text{GND}$; $T_J = 25^\circ\text{C}$, Gain $A_{CSA} = 5\text{V/V}$	-3.34		3.34	mV
V_{OFF_DRIFT}	Input drift offset voltage	$V_{SP} = V_{SN} = \text{GND}$		8		$\mu\text{V}/^\circ\text{C}$
V_{BIAS}	Output voltage bias ratio	$V_{SP} = V_{SN} = \text{GND}$		0.5		
I_{BIAS}	Input bias current	$V_{SP} = V_{SN} = \text{GND}$, $V_{CSAREF} = 3\text{V to } 5.5\text{V}$			100	μA
I_{BIAS_OFF}	Input bias current offset	$I_{SP} - I_{SN}$	-1		1	μA
CMRR	Common-mode rejection ratio	DC		80		dB
		20 kHz		60		dB
I_{CSA_SUP}	Supply current for CSA	$CSAREF$, $V_{CSAREF} = 3.0\text{V to } 5.5\text{V}$		1.5		mA
T_{CMREC}	Common mode recovery time			2		us
PROTECTION CIRCUITS						
V_{GVDD_UV}	GVDD undervoltage threshold	V_{GVDD} rising		7.4		V
		V_{GVDD} falling		6.7		V
V_{GVDD_UV}	GVDD undervoltage threshold	V_{GVDD} rising, DRV8162L		4.8		V
		V_{GVDD} falling, DRV8162L		4.7		V
$t_{GVDD_UV_DG}$	GVDD undervoltage deglitch time		5	10	15	μs
V_{BST_UV}	Bootstrap undervoltage threshold	$V_{BST} - V_{SH}$; V_{BST} rising, $GVDD = 12\text{V}$		7.43		V
	Bootstrap undervoltage threshold	$V_{BST} - V_{SH}$; V_{BST} falling, $GVDD = 12\text{V}$		7.25		V
	Bootstrap undervoltage threshold	$V_{BST} - V_{SH}$; V_{BST} rising, $GVDD = 5\text{V}$, DRV8162L		4.08		V
	Bootstrap undervoltage threshold	$V_{BST} - V_{SH}$; V_{BST} falling, $GVDD = 5\text{V}$, DRV8162L		3.94		V
V_{DS_LVL0-0}	V_{DS} overcurrent protection threshold level (DC)	$R_{VDSLVL} = 0.1\text{ K}\Omega$ max (LEVEL0)	0.087	0.1	0.116	V
V_{DS_LVL1-1}		$R_{VDSLVL} = 2\text{ K}\Omega$ typ (LEVEL1); one pulse detected on VDSLVL pin	0.136	0.15	0.166	
V_{DS_LVL1-0}		$R_{VDSLVL} = 2\text{ K}\Omega$ typ (LEVEL1); DC	0.187	0.2	0.217	
V_{DS_LVL2-1}		$R_{VDSLVL} = 5.6\text{ K}\Omega$ typ (LEVEL2); one pulse detected on VDSLVL pin	0.28	0.3	0.319	
V_{DS_LVL2-0}		$R_{VDSLVL} = 5.6\text{ K}\Omega$ typ (LEVEL2)	0.38	0.4	0.42	
V_{DS_LVL3-1}		$R_{VDSLVL} = 12\text{ K}\Omega$ typ (LEVEL3); one pulse detected on VDSLVL pin	0.482	0.5	0.53	
V_{DS_LVL3-0}		$R_{VDSLVL} = 12\text{ K}\Omega$ typ (LEVEL3)	0.575	0.6	0.623	
V_{DS_LVL4-1}		$R_{VDSLVL} = 26\text{ K}\Omega$ typ (LEVEL4); one pulse detected on VDSLVL pin	0.67	0.7	0.73	
V_{DS_LVL4-0}		$R_{VDSLVL} = 26\text{ K}\Omega$ typ (LEVEL4)	0.765	0.8	0.83	
V_{DS_LVL5-1}		$R_{VDSLVL} = 62\text{ K}\Omega$ typ (LEVEL5); one pulse detected on VDSLVL pin	0.87	0.9	0.934	
V_{DS_LVL5-0}		$R_{VDSLVL} = 62\text{ K}\Omega$ typ (LEVEL5)	0.96	1.0	1.04	
V_{DS_LVL6-1}		$R_{VDSLVL} = 130\text{ K}\Omega$ typ (LEVEL6); one pulse detected on VDSLVL pin	1.46	1.5	1.548	
V_{DS_LVL6-0}		$R_{VDSLVL} = 130\text{ K}\Omega$ typ (LEVEL6);	1.945	2.0	2.05	
t_{DS_DG}	V_{DS} protection deglitch time			3		μs
t_{DS_BLK}	V_{DS} overcurrent protection blanking time			1		μs
t_{CLRFLT}	V_{DS} overcurrent protection fault clear time	$INH=INL=Low$		250		μs
$t_{VDSLVLFIL}$	VDSLVL one pulse filter time			4		μs

$V_{GVDD} = 12\text{ V}$ $V_{VDRAIN} = 48\text{ V}$ $T_J = 25^\circ\text{C}$ (unless otherwise noted)

PARAMETER		TEST CONDITIONS	MIN	TYP	MAX	UNIT
$V_{IHVDSLVL}$	VDSLVL one pulse high-level detection voltage			1		V
T_{OTSD}	Thermal shutdown temperature	T_J rising;	158	170	187	$^\circ\text{C}$
T_{HYS}	Thermal shutdown hysteresis		7	8.5	10	$^\circ\text{C}$

6.6 Timing Diagrams

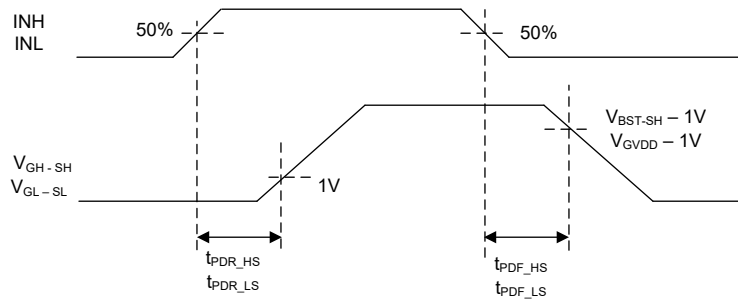


Figure 6-1. Gate Driver Propagation Delay Timing Diagram

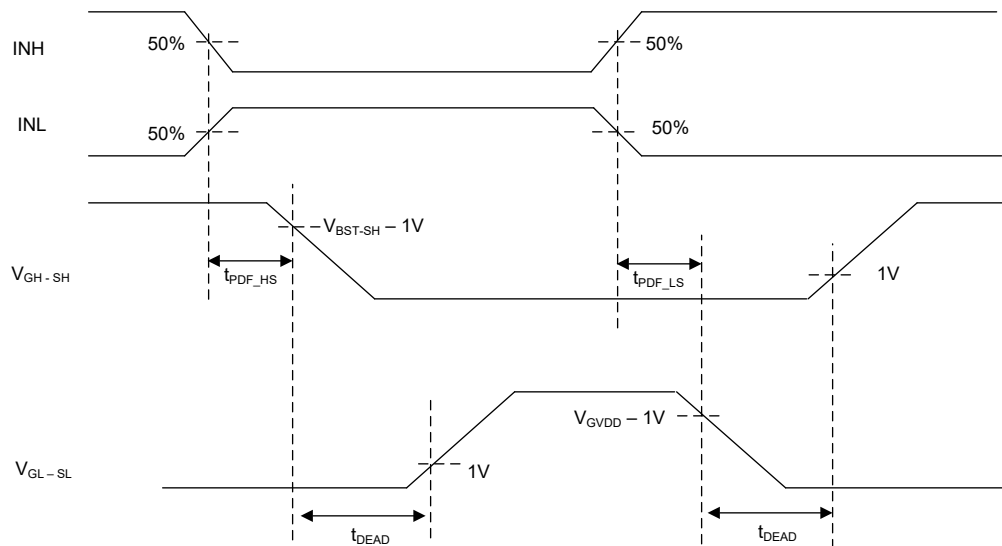


Figure 6-2. Gate Driver Dead Timing Insertion (INH and INL monitor mode)

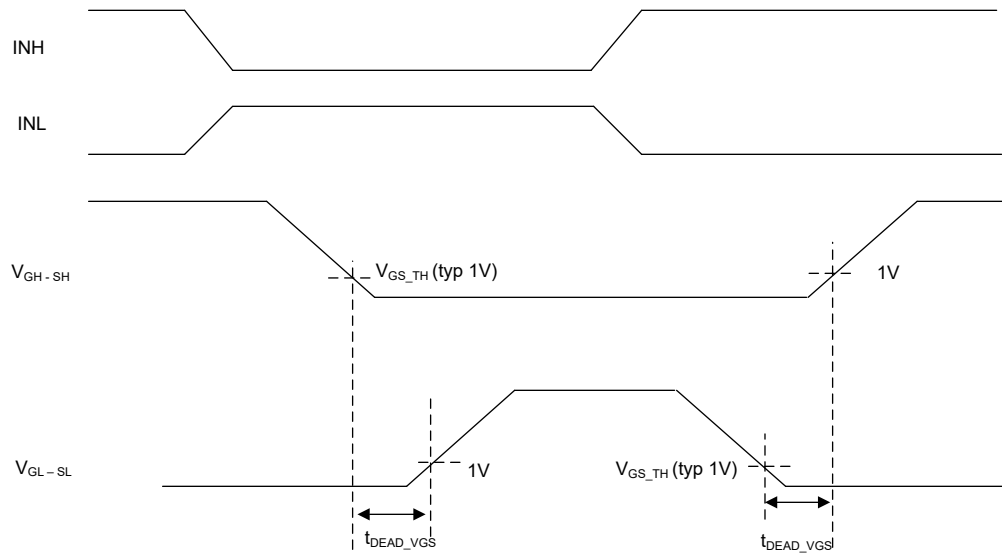


Figure 6-3. Gate Driver Dead Timing Insertion (VGS monitor mode)

7 Detailed Description

7.1 Overview

The DRV816x devices are integrated 100V gate drivers for various electromechanical loads including brushless DC (BLDC) motors, brushed DC motors, stepper motors, switched reluctance motors, and solenoids. These devices reduce system component count, cost, and complexity by integrating half-bridge gate drivers with a trickle charge pump, bootstrap diode, and FET VDS monitoring. The FET VDS monitors protect the external FETs against shorts to the supply, to ground, or across motor terminals. The DRV8161 integrates a bidirectional low-side current sense amplifier for current feedback to the controller ADC. The half-bridge architecture allows for the gate driver to be placed near the power stage FETs to simplify signal routing, reduce radiated EMI, and reduce overall PCB area.

The gate drivers support external N-channel high-side and low-side power MOSFETs and can drive up to 1A source, 2A sink peak currents. The integrated bootstrap diode, external bootstrap capacitor, and integrated trickle charge pump generate the high-side gate drive supply voltage from the GVDD pin. The GVDD pin directly supplies the low-side gate drive supply voltage. The DRV8162 and DRV8162L device variants offer separate GVDD and GVDD_LS pins to help the system design of safe torque off (STO).

A smart gate-drive architecture provides the ability to adjust the output gate-drive current strength allowing for the gate driver to control the power MOSFET VDS switching speed. This allows for the removal of external gate drive resistors and diodes reducing BOM component count, cost, and PCB area. The architecture also uses an internal state machine to protect against gate-drive short-circuit events, control the half-bridge dead time, and protect against dV/dt parasitic turn on of the external power MOSFET.

In addition to the high level of device integration, the DRV816x devices provide a wide range of integrated protection features. These features include power-supply under voltage lockout (UVLO), VDS over current monitoring (OCP), and over temperature shutdown (OTSD). The nFAULT pin indicates fault events detected by the protection features.

7.2 Functional Block Diagram

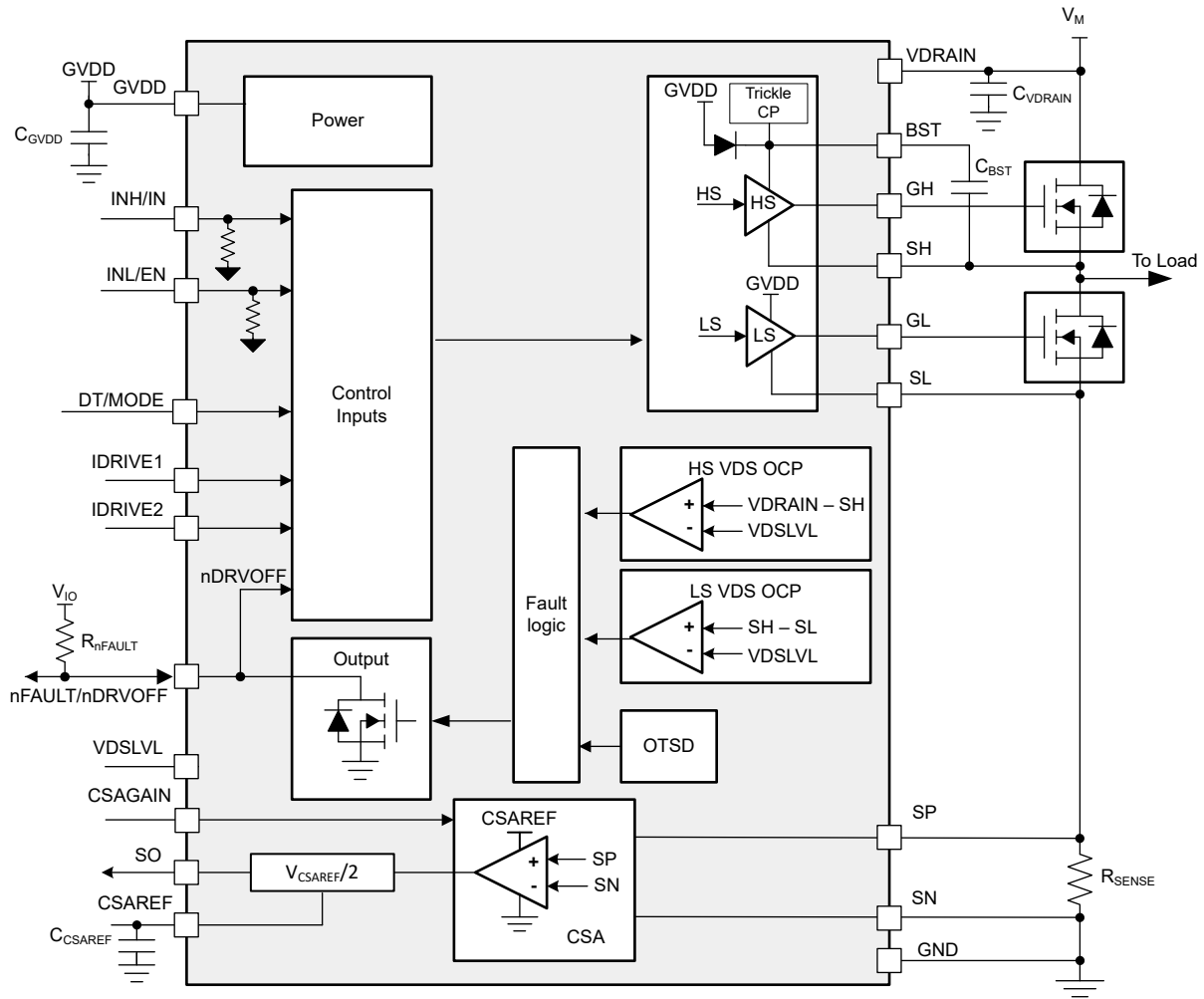


Figure 7-1. Block Diagram for DRV8161

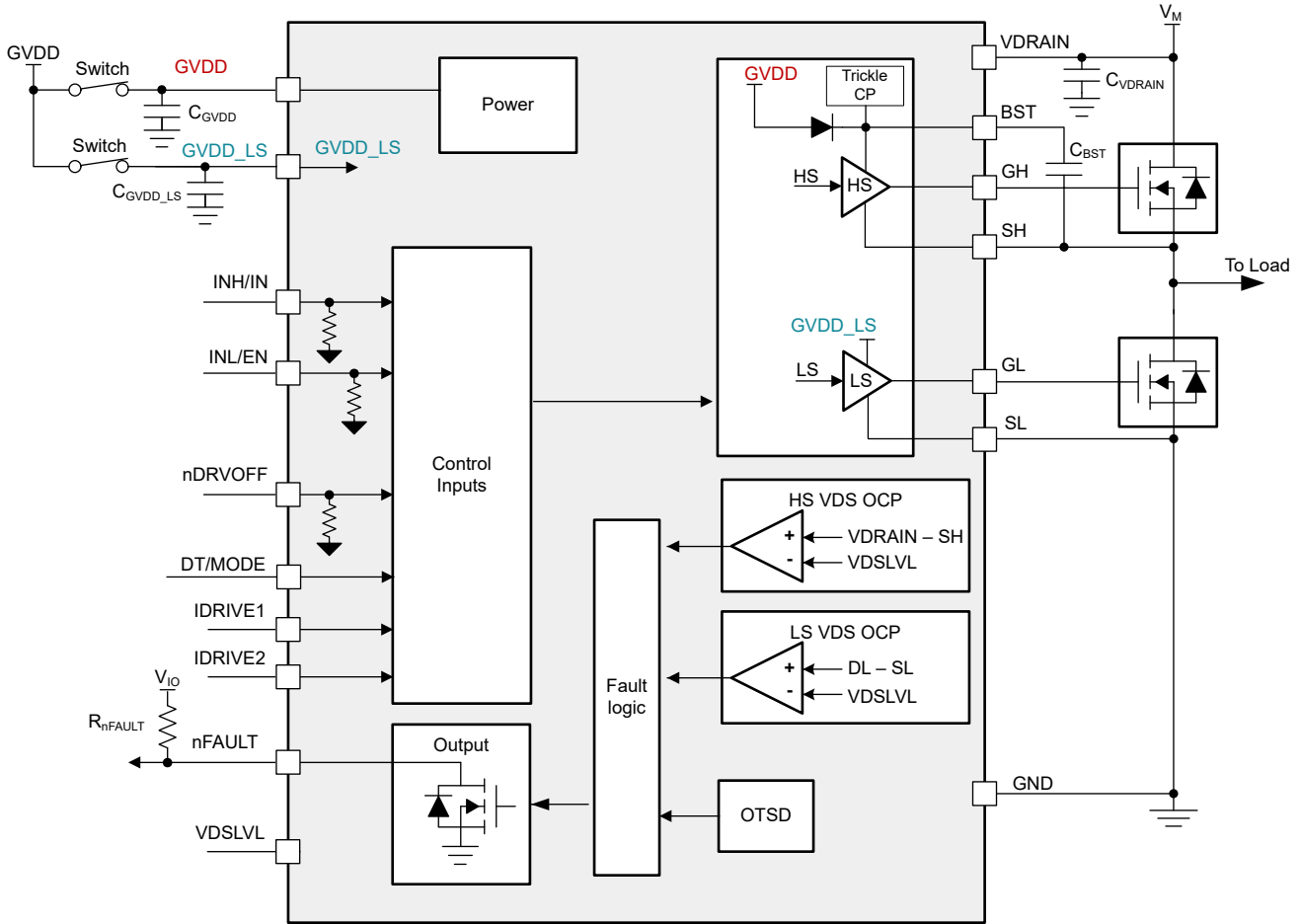


Figure 7-2. Block Diagram for DRV8162 and DRV8162L

7.3 Feature Description

7.3.1 Gate Drivers

The DRV816x family of devices integrates high-side and low-side FET gate drivers capable of driving N-channel power MOSFETs in half-bridge configuration. A bootstrap gate drive architecture generates the high-side gate driver voltage during PWM switching. The GVDD pin supplies both high-side and low-side gate drivers and sets the V_{GS} voltage for the FETs.

The DRV816x devices support half-bridge power stage architecture. In addition to the regular 2-pin PWM, 1-pin PWM control interface, the device offers an independent PWM mode by disabling shoot through protection and allowing the high-side and low-side FETs to be controlled independently. Independent FET control is useful for driving solenoids and switched reluctance motors. The DRV8162 and DRV8162L have separate supply pins (GVDD and GVDD_LS) for high-side and low-side FET gate drive. This allows the system to support safe torque off (STO) function by adding external power switches to the gate drive supply pins.

7.3.1.1 PWM Control Modes

The DRV816x family of devices provides three different PWM control modes to support various commutation and control methods. The PWM control modes are 1-pin PWM, 2-pin PWM and independent PWM mode. The modes are configured by DT/MODE pin.

DT/MODE pin is latched at power up, so to change the PWM control mode the device needs to be reset through power supply. Refer to [Table 7-6](#) for the configuration of PWM control mode using the DT/MODE pin.

7.3.1.1.1 2-pin PWM Mode

In 2-pin PWM mode, half-bridge driver supports three output states: low, high, or high-impedance (Hi-Z). The corresponding INH and INL signals control the output state as listed in [Table 7-1](#).

Table 7-1. 2-pin PWM Mode Truth Table

INL	INH	GL	GH	SH
0	0	L	L	Hi-Z
0	1	L	H	H
1	0	H	L	L
1	1	L	L	Hi-Z

7.3.1.1.2 1-pin PWM Mode

In 1-pin PWM mode, the IN pin controls half-bridge and supports two output states: low or high. The EN pin is used to put the half bridge in the Hi-Z state. If the Hi-Z state is not required, tie INL/EN pin to logic high. The corresponding INH/IN and INL/EN signals control the output state as listed in [Table 7-2](#).

Table 7-2. 1-pin PWM Mode Truth Table

INL/EN	INH/IN	GL	GH	SH
0	X	L	L	Hi-Z
1	0	H	L	L
1	1	L	H	H

7.3.1.1.3 Independent PWM Mode

DRV816x supports independent PWM mode, the INH and INL pins control the outputs, GH and GL, respectively. This control mode lets the device drive separate high-side and low-side load. The independent PWM drive mode can be used for various type of loads including solenoids, Switched Reluctance Motor (SRM), unidirectional brushed DC motors, and low-side and high-side switches. In this mode, turning on both the high-side and low-side MOSFETs at the same time in a given half bridge gate driver is possible to use the device as a high-side or low-side driver. The shoot-through protection and dead time are bypassed in the mode.

Table 7-3. Independent PWM Mode Truth Table

INL	INH	GL	GH
0	0	L	L
0	1	L	H
1	0	H	L
1	1	H	H

[Figure 7-3](#) shows how the device can be used to connect an inductive load where both the high-side and low-side MOSFETs can be turned on at the same time to drive the load without causing shoot-through. The external diodes for current recirculation are recommended. This configuration helps the design of solenoids or applications. The trickle charge pump is enabled all the time regardless of low-side PWM activity.

Note

The low-side VDS monitor of DRV816x is not available if independent PWM mode is configured. For DRV8161, the CSA output can be monitored by MCU to detect the over current condition.

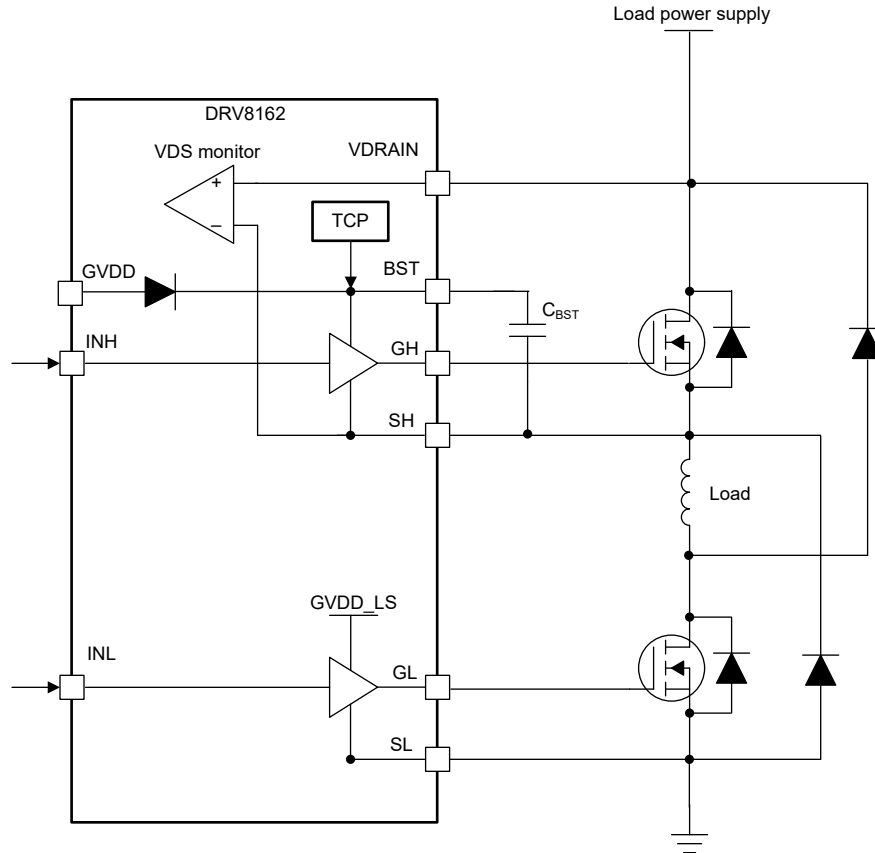


Figure 7-3. Independent PWM mode for single load between high-side and low-side

Figure 7-4 shows how the device can be used to connect a high-side load and a low-side load at the same time with one half-bridge and drive the loads independently.

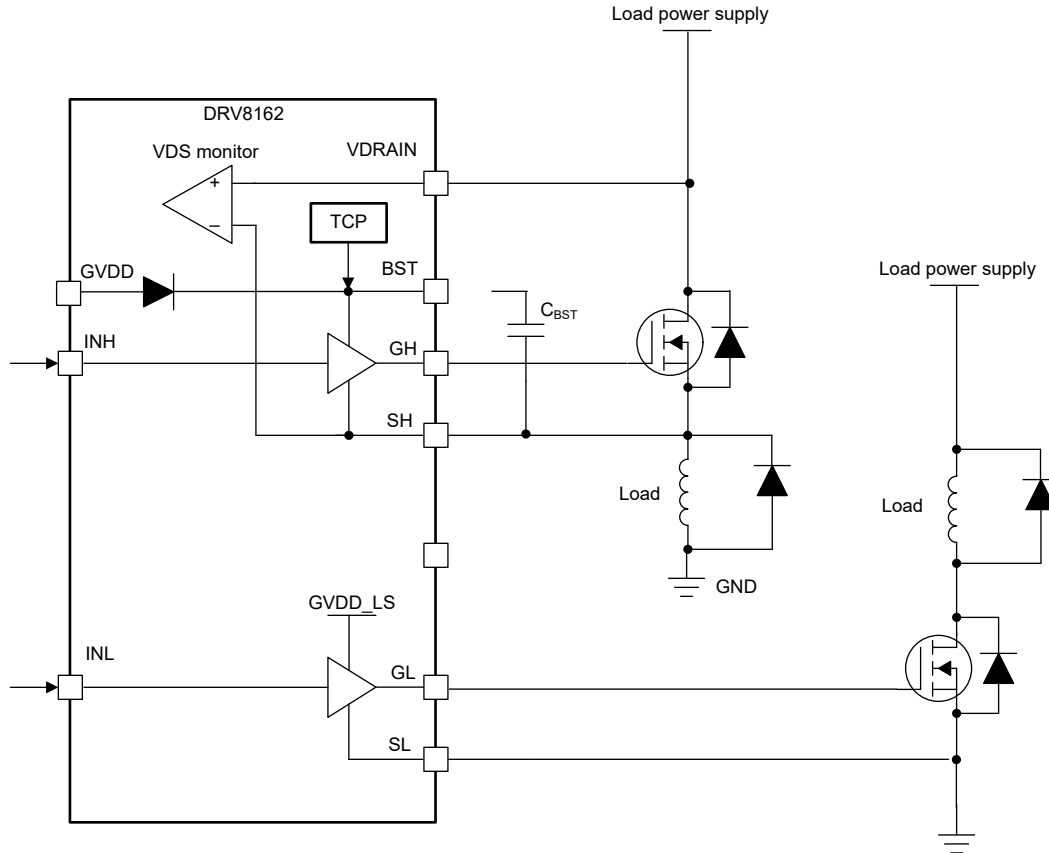


Figure 7-4. Independent PWM mode for high-side and low-side independent loads

7.3.1.2 Gate Drive Architecture

The gate driver device uses a complimentary, push-pull topology for both the high-side and low-side drivers. This topology allows for both a strong pullup and pulldown of the external MOSFET gates. The low side gate driver is supplied directly from the GVDD regulator supply. For the high-side gate driver a bootstrap diode and capacitor are used to generate the floating high-side gate voltage supply. The bootstrap diode is integrated and an external bootstrap capacitor is used on the BST pin.

The high-side gate driver has semi-active pull down and low side gate has passive pull down to help prevent the external MOSFET from turning ON when power supply is disconnected.

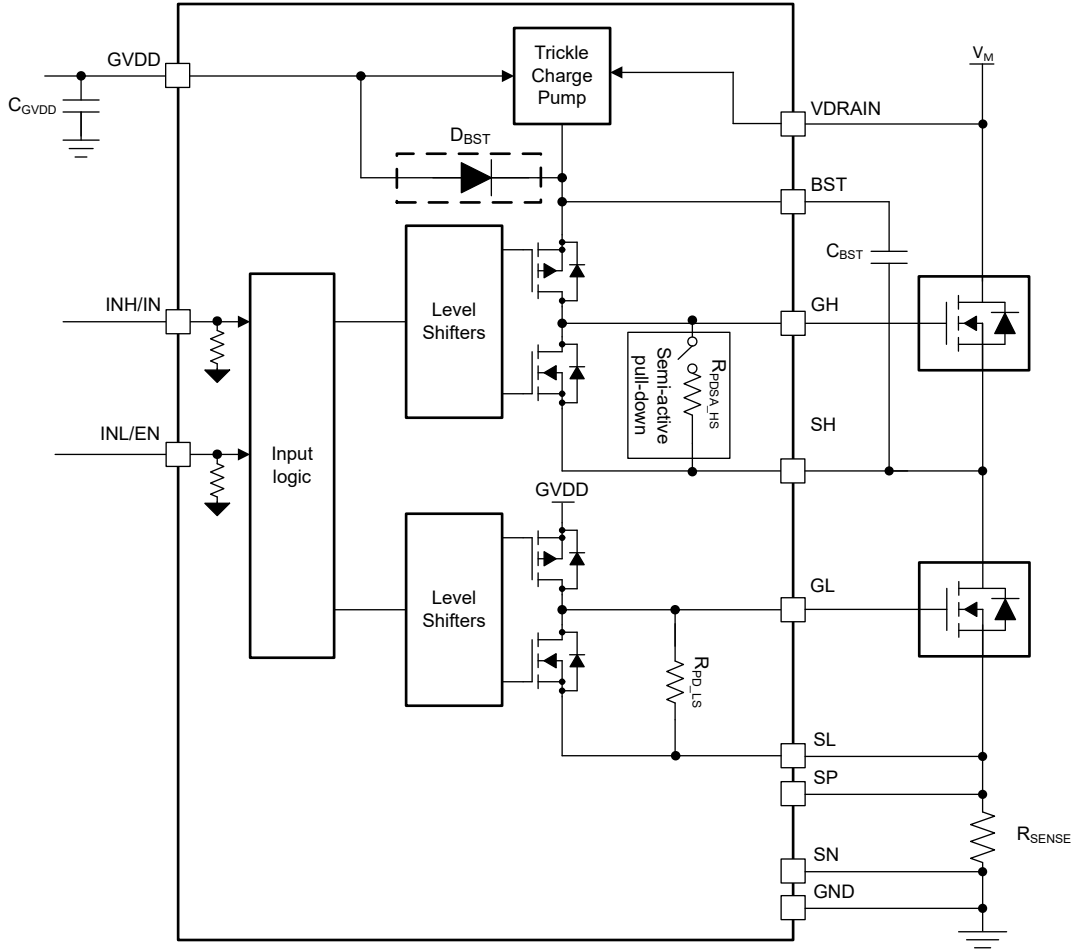


Figure 7-5. DRV8161 Gate Driver Block Diagram

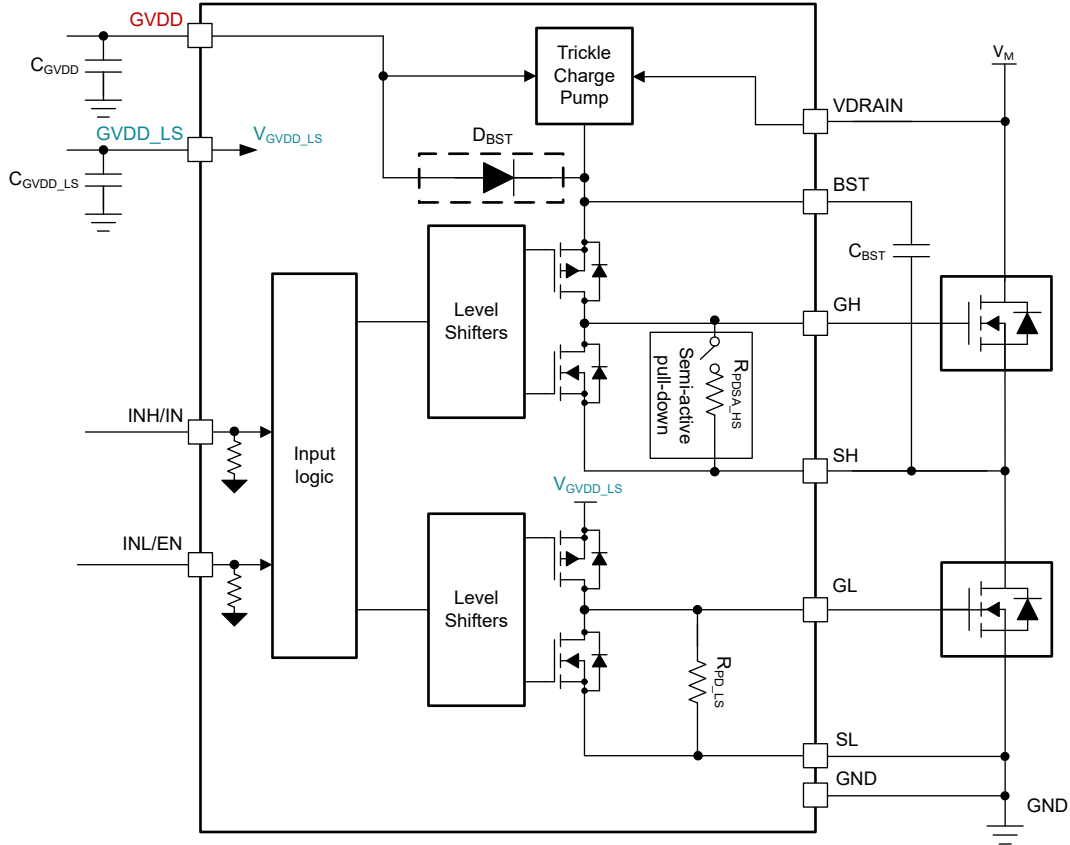


Figure 7-6. DRV8162 and DRV8162L Gate Driver Block Diagram

7.3.1.2.1 Tickle Charge Pump (TCP)

An internal trickle charge pump (TCP) is connected to BST node to reduce voltage drop due to the leakage currents of the driver and external components. The charge pump generates V_{TCP} voltage with respect to VDRAIN pin. For the independent PWM mode, the charge pump is active all the time. For the 2-pin PWM and 1-pin PWM mode, if the INL stays low for 250us (typ), the charge pump is activated.

7.3.1.2.2 Deadtime and Cross-Conduction Prevention (Shoot through protection)

The DRV816x provides dead time insertion to prevent both external MOSFETs of each half-bridge from switching on at the same time. The deadtime can be enabled and adjusted between 20ns and 900ns by connecting resistor between DT/MODE and ground. Refer to [Section 7.3.2.6](#).

In the DRV816x, if the device is configured to 2-pin PWM mode, high- and low-side inputs operate independently, with an exception to prevent cross conduction when the high and low side of the same half-bridge are turned ON at same time. The device turns OFF high- and low- side output to prevent shoot through when high- and low-side inputs are logic high at same time.

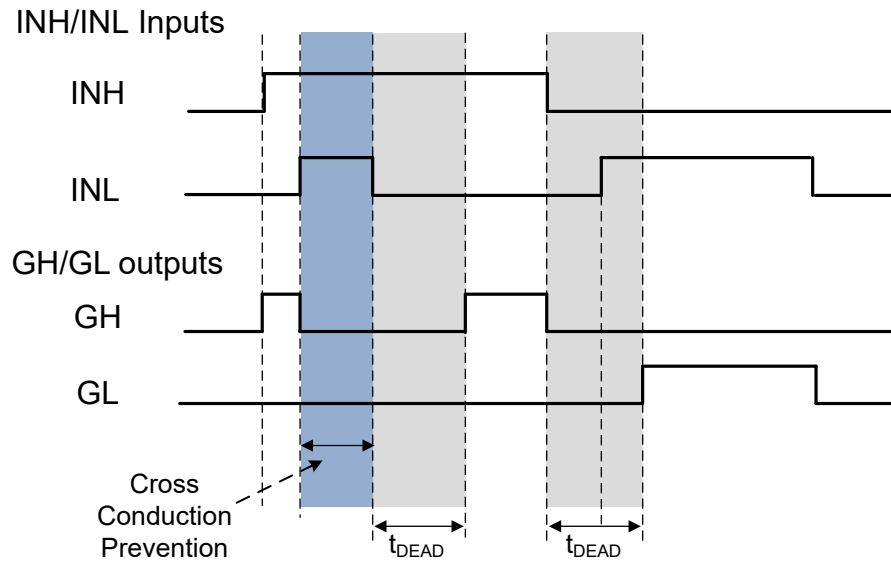


Figure 7-7. Cross Conduction Prevention and Dead time Insertion (2-pin PWM, dead time insertion enabled)

7.3.2 Pin Diagrams

7.3.2.1 Four Level Input Pin (CSAGAIN)

Figure 7-8 shows the structure of the four level input pin, CSAGAIN, for hardware interface configuration. The input can be set with an external resistor. The $C_{CSAGAIN}$ is optional to help reduce the impact of GND noise. The CSA GAIN information is not latched at the device power up and can be updated during the device operation.

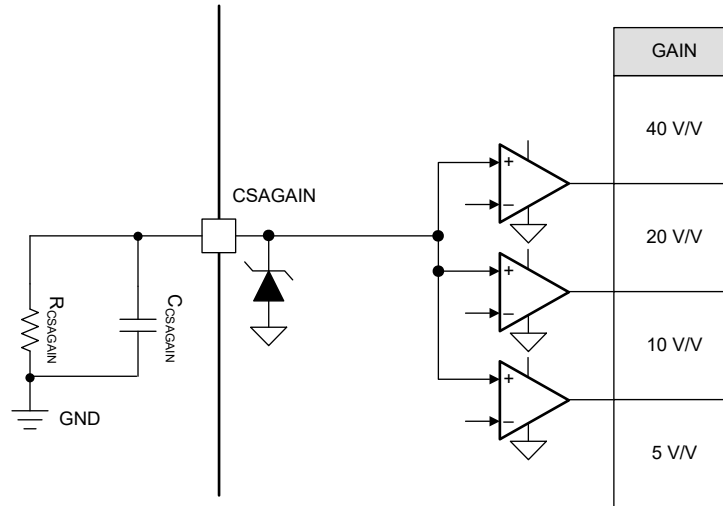


Figure 7-8. Four Level Input Pin Structure

7.3.2.2 Digital output nFAULT (DRV8162, DRV8162L)

Figure 7-9 shows the structure of the open-drain output pins, nFAULT. The open-drain output requires an external pullup resistor to function correctly. Refer to Table 7-7 for the device actions including nFAULT.

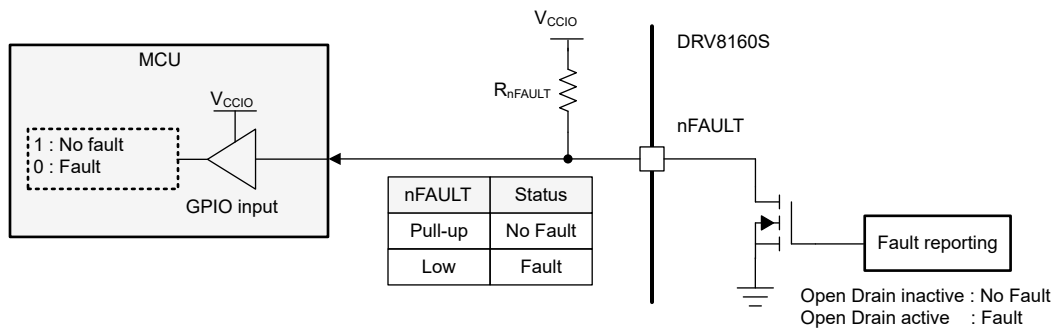


Figure 7-9. nFAULT Open Drain Output buffer

7.3.2.3 Digital InOut nFAULT/nDRVOFF (DRV8161)

Figure 7-10 shows the structure of the open-drain output and input pin. In the DRV8161 device variant, two functions nFAULT and nDRVOFF are achieved by sharing one device pin, nFAULT/nDRVOFF. The open-drain output requires an external pullup resistor to function correctly. If a fault condition is detected, the device activates Open Drain buffer, and nFAULT/nDRVOFF pin is driven low. The nFAULT/nDRVOFF pins is internally connected to Gate Drive Shutdown logic, and the gate drive outputs are shutdown (pull-down) if the nFAULT/nDRVOFF pin low. Refer to Table 7-7 for the device actions including nFAULT.

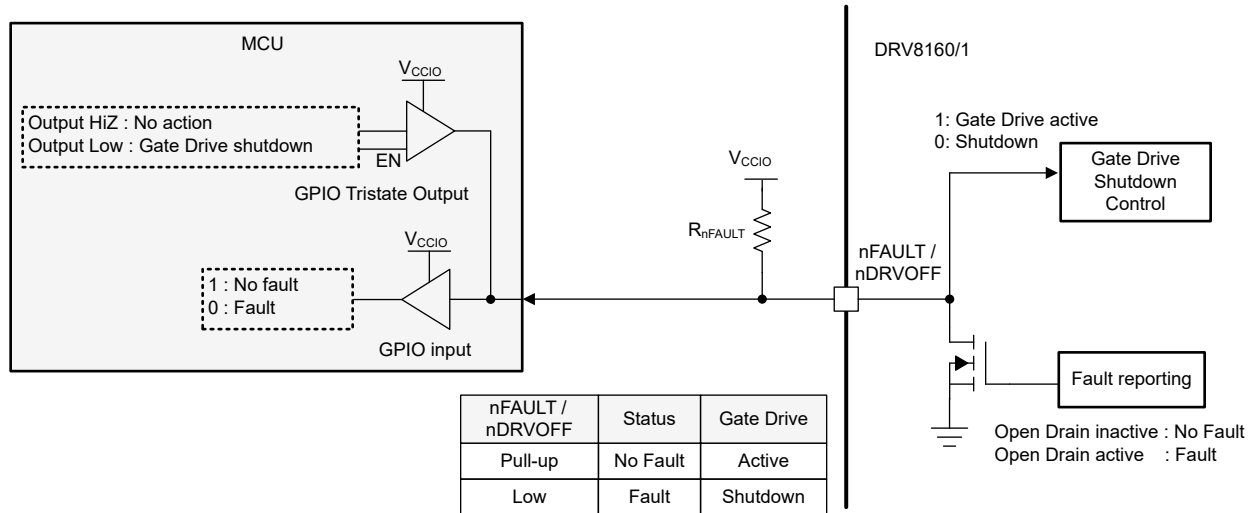


Figure 7-10. nFAULT/nDRVOFF Open Drain Output and Input buffer

7.3.2.4 Multi-level inputs (IDRIVE1 and IDRIVE2)

The DRV816x have IDRIVE1 and IDRIVE2 device pins for gate drive current configuration. Each pin can set 8 levels, LEVEL0 to LEVEL7, with an external resistor connected between the device pin and GND. The gate drive current I_{DRIVEN} and I_{DRIVEP} can be determined by [Table 7-4](#). The (G) in the table indicates that VGS monitor dead time insertion is enabled. The IDRIVE1 and IDRIVE2 information are latched at the device power up.

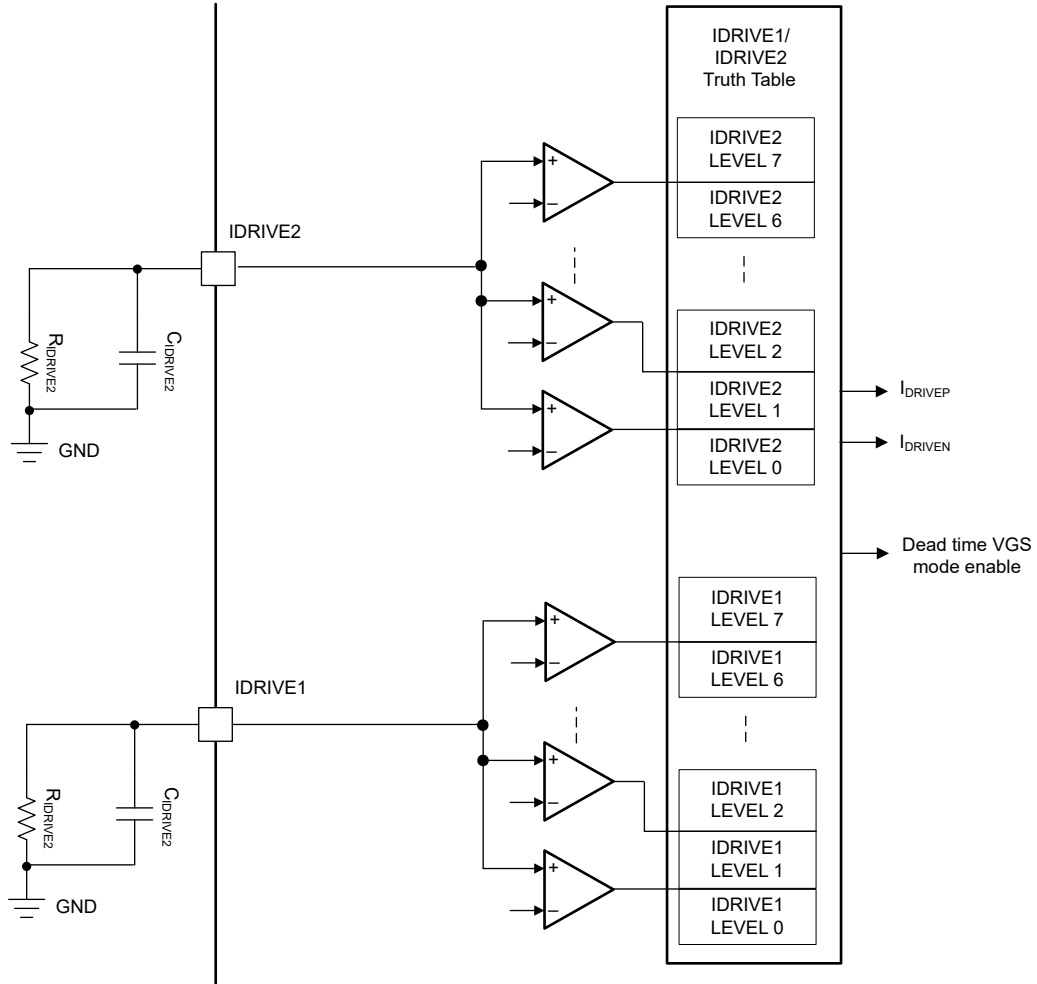


Figure 7-11. Multi-level digital inputs of IDRIVE1 and IDRIVE2

Table 7-4. IDRIVE1/IDRIVE2 Truth Table for Gate Drive Current configuration

		IDRIVE2 Input pin (R _{IDRIVE2})															
		LEVEL0 (Short to GND)		LEVEL1 (2KΩ typ)		LEVEL2 (5.6KΩ typ)		LEVEL3 (12KΩ typ)		LEVEL4 (27KΩ typ)		LEVEL5 (62KΩ typ)		LEVEL6 (130KΩ typ)		LEVEL7 (Open)	
		Source:Sink = 1:2		Source:Sink = 1:2		Source:Sink = 1:1.5		Source:Sink = 1:1.5		Source:Sink = 1:1		Source:Sink = 1:3		VGS dead time insertion enabled		IDRIVE2 open	
		I _{DRIVE P} [mA]	I _{DRIVE N} [mA]	I _{DRIVE P} [mA]	I _{DRIVE N} [mA]	I _{DRIVE P} [mA]	I _{DRIVE N} [mA]	I _{DRIVE P} [mA]	I _{DRIVE N} [mA]	I _{DRIVE P} [mA]	I _{DRIVE N} [mA]	I _{DRIVE P} [mA]	I _{DRIVE N} [mA]	I _{DRIVE P} [mA]	I _{DRIVE N} [mA]	I _{DRIVE P} [mA]	I _{DRIVE N} [mA]
IDRIVE1 Input pin (R _{IDRIVE1})	LEVE L7 (Open)	256	512	16	32	256	384	16	32	128	128	64	192	32 (G)	64 (G)	16 (G)	32 (G)
	LEVE L6 (130KΩ typ)	288	576	32	64	288	448	32	32	192	192	128	384	96 (G)	192 (G)	64 (G)	128 (G)
	LEVE L5 (62KΩ typ)	320	640	64	128	320	448	64	64	256	256	192	576	128 (G)	256 (G)	128	256
	LEVE L4 (27KΩ typ)	384	768	96	192	384	576	96	128	320	320	256	768	160 (G)	320 (G)	192	384
	LEVE L3 (12KΩ typ)	448	896	128	256	448	640	128	192	384	384	288	896	192 (G)	384 (G)	256	512
	LEVE L2 (5.6KΩ typ)	512	1024	160	320	512	768	160	256	448	448	384	1024	224 (G)	448 (G)	320	640
	LEVE L1 (2KΩ typ)	768	1536	192	384	768	1024	192	256	512	512	512	1536	512 (G)	1024 (G)	512	1024
	LEVE L0 (Short to GND)	1024	2048	224	448	1024	1536	224	384	1024	1024	768	2048	1024 (G)	2048 (G)	1024	2048

7.3.2.5 Multi-level digital input (VDSLVL)

The VDS monitor threshold level of DRV816x is configurable using VDSLVL pin. The pin can set 8 levels, LEVEL0 to LEVEL7, with an external resistor connected between VDSLVL and GND. The 7 threshold levels are determined by [Table 7-5](#). As shown in [Figure 7-13](#), if one digital pulse is applied to VDSLVL pin, additional 6 threshold levels are available. If VDSLVL pin is open, VDS monitor function is disabled. The VDS monitor threshold information is latched at the device power up.

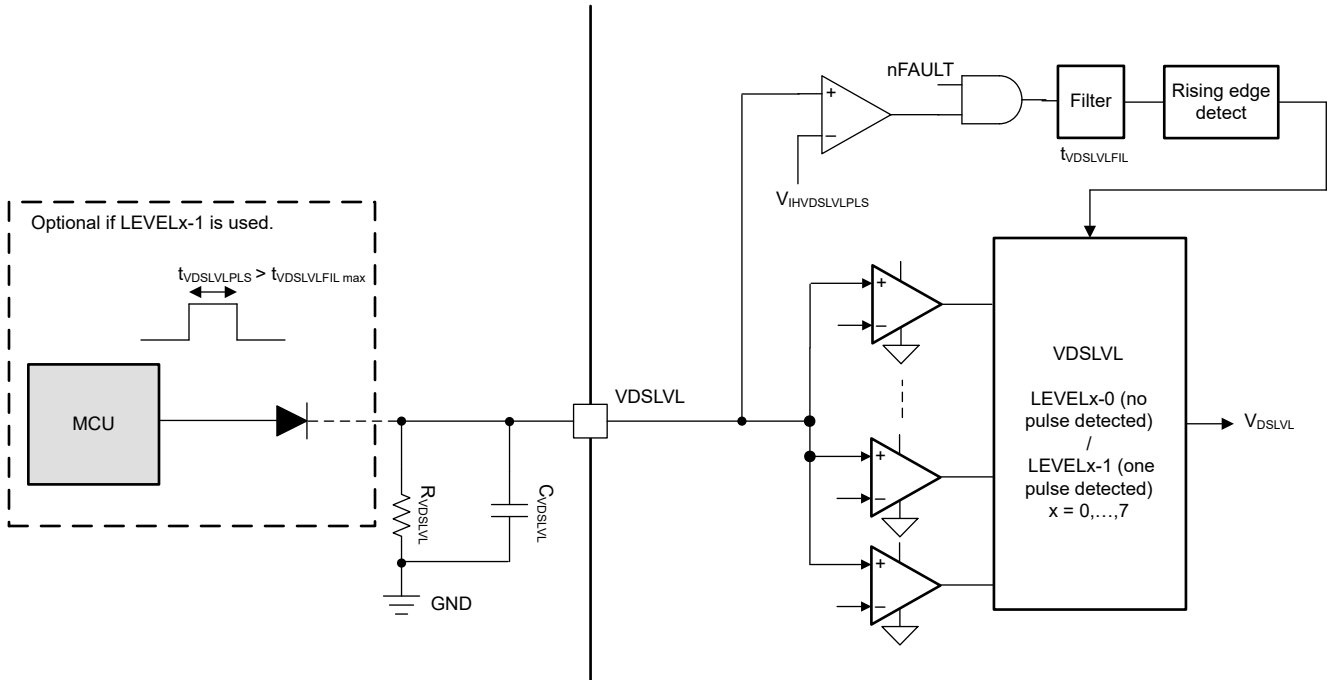


Figure 7-12. VDSLVL input pulse timing diagram

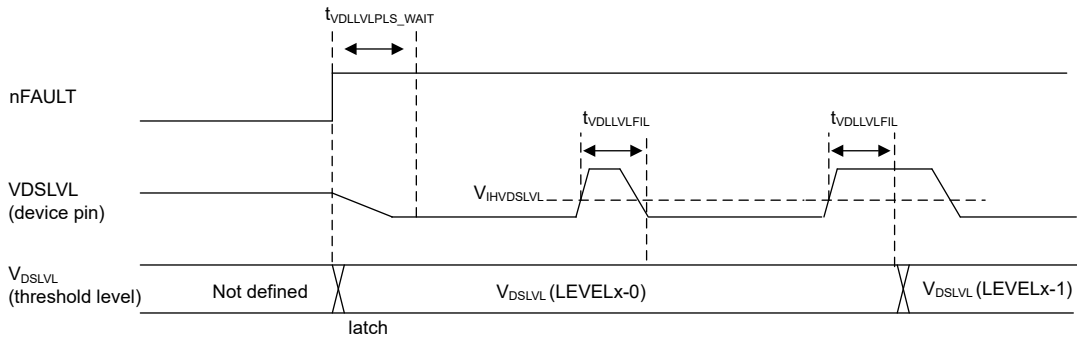


Figure 7-13. Multilevel digital input of VDSLVL

Table 7-5. VDS threshold level selection table

VDSLVL input pin (R_{VDSLVL})	VDS monitor threshold	
	LEVELx-0 (no pulse detected)	LEVELx-1 (one pulse detected)
LEVEL7 (OPEN)	Disabled	Disabled
LEVEL6 (130K Ω typ)	2V	1.5V
LEVEL5 (62K Ω typ)	1V	0.9V
LEVEL4 (27K Ω typ)	0.8V	0.7V
LEVEL3 (12K Ω typ)	0.6V	0.5V
LEVEL2 (5.6K Ω typ)	0.4V	0.3V
LEVEL1 (2K Ω typ)	0.2V	0.15V
LEVEL0 (Short to GND)	0.1V	Not available

7.3.2.6 Multi-level digital input DT/MODE

Figure 7-14 shows the structure of multilevel input pin DT/MODE for hardware interface configuration. The input can be set with an external resistor R_{DTMODE} connected to GND. The C_{DTMODE} is optional to help reduce the

impact of GND noise. The shoot through function, dead time insertion, and PWM control mode are configured as shown in Table 7-6. The information of LEVEL0, 1, 2, 3, and LEVEL5 are latched at the device power up.

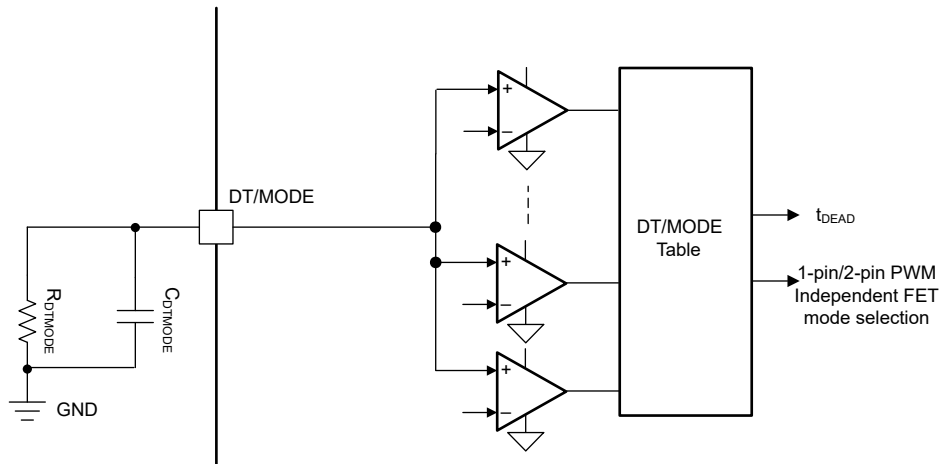


Figure 7-14. DT/MODE Pin Structure

Table 7-6. DT/MODE Table

DT/MODE (R_{DTMODE})	Shoot Through protection	Dead Time Insertion (t_{DEAD})	PWM Control mode
LEVEL5 (pin floating, $>3.3M\Omega$)	enabled	disabled. $t_{MINDEAD_VG}$ is inserted when VGS dead time insertion is enabled via IDRIVE	2-pin PWM
LEVEL4 - Linear (10K Ω - 1M Ω)	enabled	enabled (20ns to 900ns)	1-pin PWM
LEVEL3 (3.3K Ω)	enabled	enabled (370ns)	2-pin PWM
LEVEL2 (1.3K Ω)	enabled	enabled (100ns)	2-pin PWM
LEVEL1 (470 Ω)	enabled	enabled (20ns)	2-pin PWM
LEVEL0 (short to GND)	disabled	disabled	Independent PWM

Use Equation 1 to calculate dead time in LEVEL4.

$$t_{dead}(ns) = 0.89 \times R_{DTMODE}(k\Omega) + 11.1 \tag{1}$$

7.3.3 Low-Side Current Sense Amplifiers

The DRV8161 integrates high-performance low-side current sense amplifier for current measurements using low-side shunt resistor. Low-side current measurements are commonly used to implement overcurrent protection, external torque control, or brushless DC commutation with the external controller. Current sense amplifier can be used to sense the sum of the half-bridge current. The current sense amplifier includes features such as configurable gain, and a voltage reference pin (CSAREF). DRV8161 generates internally a common voltage of $V_{CSAREF}/2$.

The gain setting is adjustable between four different levels (5V/V, 10V/V, 20V/V, and 40V/V). Gain settings can be configured through CSAGAIN pin.

7.3.3.1 Bidirectional Current Sense Operation

DRV8161 internally generates common mode voltage to enable bidirectional for current measurement. The current sense amplifier operates as bidirectional mode and the SO pin outputs an analog voltage equal to the voltage across the SP and SN pins multiplied by the gain setting (G_{CSA}) plus the output bias voltage $V_{VREF} / 2$.

Use Equation 2 to calculate the current through the shunt resistor (CSAREF / 2 case).

$$I = \frac{V_{SOx} - \frac{V_{VREF}}{2}}{G_{CSA} \times R_{SENSE}} \tag{2}$$

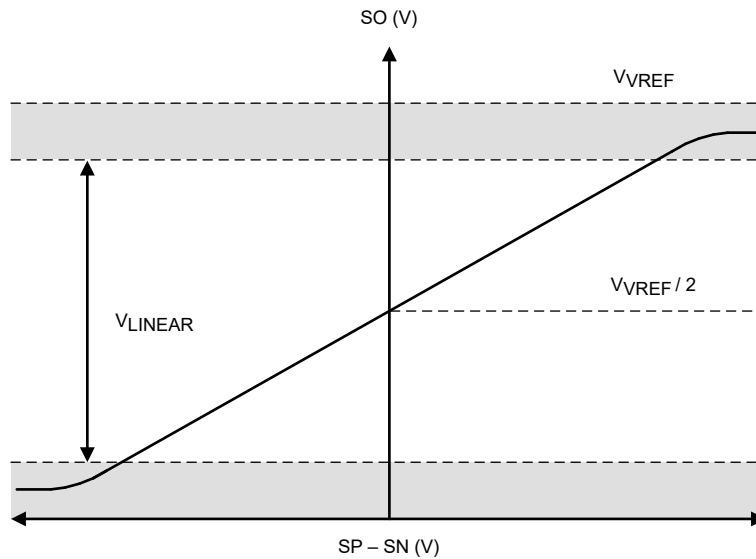


Figure 7-15. Bidirectional Current Sense Output

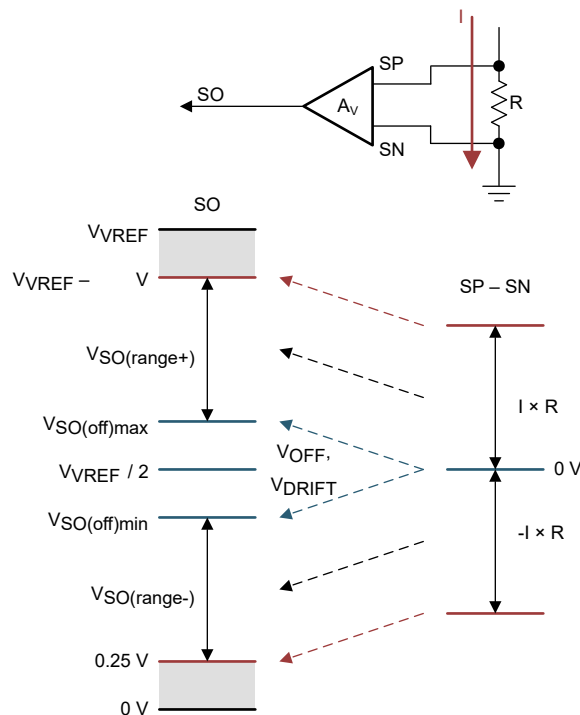


Figure 7-16. Bidirectional Current Sense Regions

7.3.4 Gate Driver Shutdown Sequence (nDRVOFF)

When nDRVOFF is driven low, the gate driver goes into shutdown, overriding signals on inputs pins INH/IN and INL/EN. nDRVOFF bypasses the digital control logic inside the device, and is connected directly to the gate driver output. This pin provides a mechanism for externally monitored faults to disable gate driver by directly bypassing an external controller or the internal control logic. When DRV816x detects the nDRVOFF pin is driven low, the device disables the gate driver and puts the gate driver into pulldown mode. The gate driver shutdown sequence proceeds as shown in Figure 7-17. When the gate driver initiates the shutdown sequence, the active driver pulldown is applied at I_{DRVN_SD} current for the t_{DRVN_SD} time.

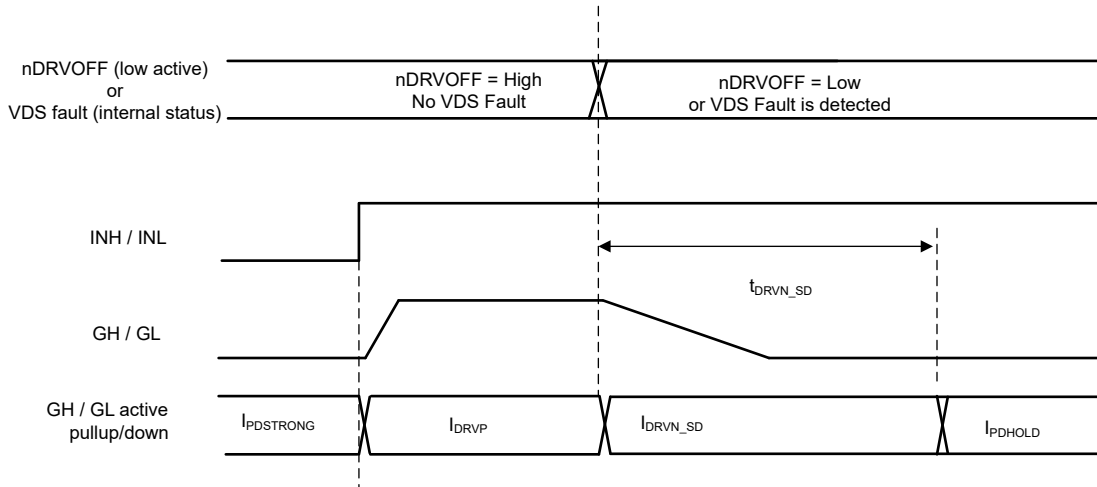


Figure 7-17. Gate Driver Shutdown Sequence

7.3.4.1 nDRVOFF Diagnostic

Figure 7-18 proposes a diagnostic of nDRVOFF of DRV8162 and DRV8162L. If a low active pulse t_{nDRVOFF_DIAG} (typ 0.5us) is applied to nDRVOFF pin, the device responds by driving nFAULT low without shutdown of the gate driver outputs. This device function is intended for a diagnostic of nDRVOFF function while continuing PWM operation. If nDRVOFF is driven low longer than t_{nDRVOFF_DEG}, the device initiates the shutdown.

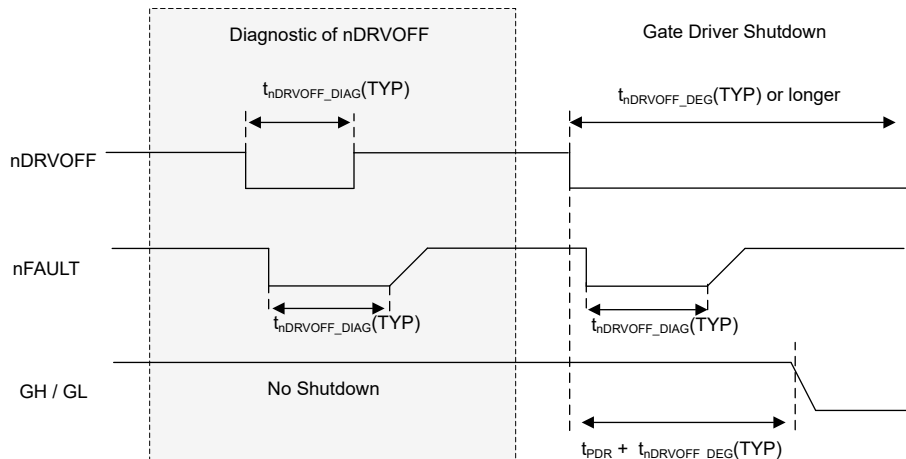


Figure 7-18. nDRVOFF Diagnostic

7.3.5 Gate Driver Protective Circuits

The DRV816x are protected against GVDD undervoltage and overvoltage, bootstrap undervoltage, MOSFET V_{DS} and Overtemperature (OTSD) events.

Table 7-7. Fault Action and Response

FAULT	CONDITION	CONFIGURATION	REPORT	GATE DRIVER GH	GATE DRIVER GL	RECOVERY
GVDD undervoltage (GVDD_UV)	$V_{GVDD} < V_{GVDD_UV}$	-	nFAULT	S-PD ⁽¹⁾	P-PD ⁽²⁾	$V_{GVDD} > V_{GVDD_UV}$
V_{DS} overcurrent (VDS_OCP)	$V_{DS} > V_{DSLVL}$	VDSLVL pin with R (LEVEL0 - LEVEL6)	nFAULT	S-PD ⁽¹⁾	P-PD ⁽²⁾	Latched: INH(IN) = Low & INL(EN) = Low for $> t_{CLRFLT}$
		VDSLVL pin open (LEVEL7)	None	Active ⁽³⁾	Active ⁽³⁾	No action
Thermal shutdown (OTSD)	$T_J > T_{OTSD}$	-	nFAULT	S-PD ⁽¹⁾	P-PD ⁽²⁾	$T_J < T_{OTSD}$
Bootstrap undervoltage	$V_{BST-SH} < V_{BST_UV}$	-	None	S-PD ⁽¹⁾	Active ⁽³⁾	$V_{BST-SH} > V_{BST_UV}$

- (1) S-PD : Semi-active Pull Down
- (2) P-PD : Passive Pull Down
- (3) Active : Gate Drivers are active for PWM

7.3.5.1 GVDD Undervoltage Lockout (GVDD_UV)

If at any time the voltage on the GVDD pin falls lower than the V_{GVDD_UV} threshold voltage for longer than the $t_{GVDD_UV_DG}$ deglitch time, the device detects a GVDD undervoltage event. After detecting the GVDD_UV undervoltage event, all of the gate driver outputs are driven low to disable the external MOSFETs, the charge pump is disabled, and the nFAULT pin pulls low. After the GVDD_UV condition is cleared, the nFAULT goes high.

7.3.5.2 MOSFET V_{DS} Overcurrent Protection (VDS_OCP)

The DRV816x devices have adjustable V_{DS} voltage monitors to detect overcurrent or short-circuit conditions on the external power MOSFETs. A MOSFET overcurrent event is sensed by monitoring the V_{DS} voltage drop across the external MOSFET $R_{DS(on)}$. The high-side VDS monitors measure between the VDRAIN and SH pins. The low-side VDS monitors measure between the SH and SL pins. If the voltage across external MOSFET exceeds the V_{VDSLVL} threshold for longer than the t_{DS_DG} deglitch time, a VDS_OCP event is recognized. After detecting the VDS overcurrent event, all of the gate driver outputs are driven low to disable the external MOSFETs and nFAULT pin is driven low. The VDS threshold can be set between 0.1V to 2.0V by VDSLVL pin. The VDS deglitch time is fixed at t_{DS_DG} . The VDS OCP can be disabled by leaving VDSLVL pin open. After the over current condition is cleared, the fault state remains latched and can be cleared when INH(IN) and INL(EN) stay low for t_{CLRFLT} time.

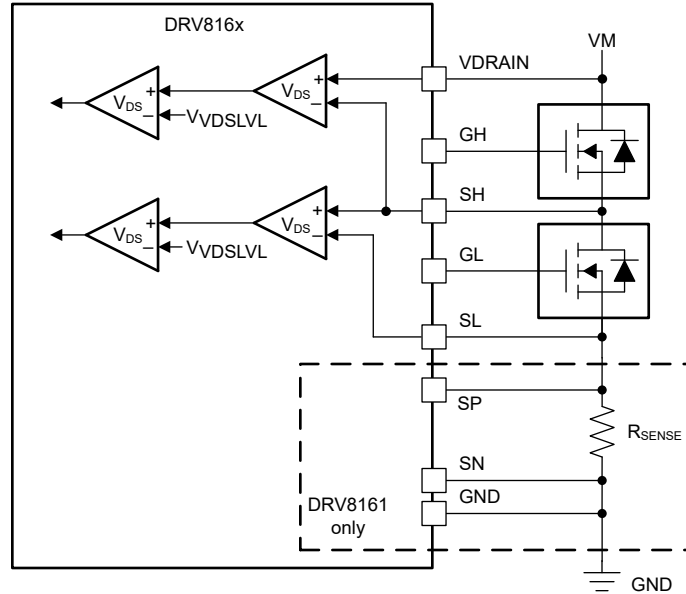


Figure 7-19. DRV816x MOSFET V_{DS} Overcurrent protection

7.3.5.3 Thermal Shutdown (OTSD)

If the die temperature exceeds the trip point of the thermal shutdown limit (T_{OTSD}), an OTSD event is recognized. After detecting the OTSD overtemperature event, all of the gate driver outputs are driven low to disable the external MOSFETs, and nFAULT pin is driven low. After OTSD condition is cleared, the device returns to normal operation and nFAULT goes high.

8 Application and Implementation

Note

Information in the following applications sections is not part of the TI component specification, and TI does not warrant its accuracy or completeness. TI's customers are responsible for determining suitability of components for their purposes. Customers should validate and test their design implementation to confirm system functionality.

8.1 Application Information

The DRV816x family of devices is primarily used in applications for three-phase brushless DC motor control. The design procedures in the [Section 8.2](#) section highlight how to use and configure the DRV816x family of devices.

8.2 Typical Application

8.2.1 Typical Application with DRV8161

Figure shows a typical application diagram of DRV8161.

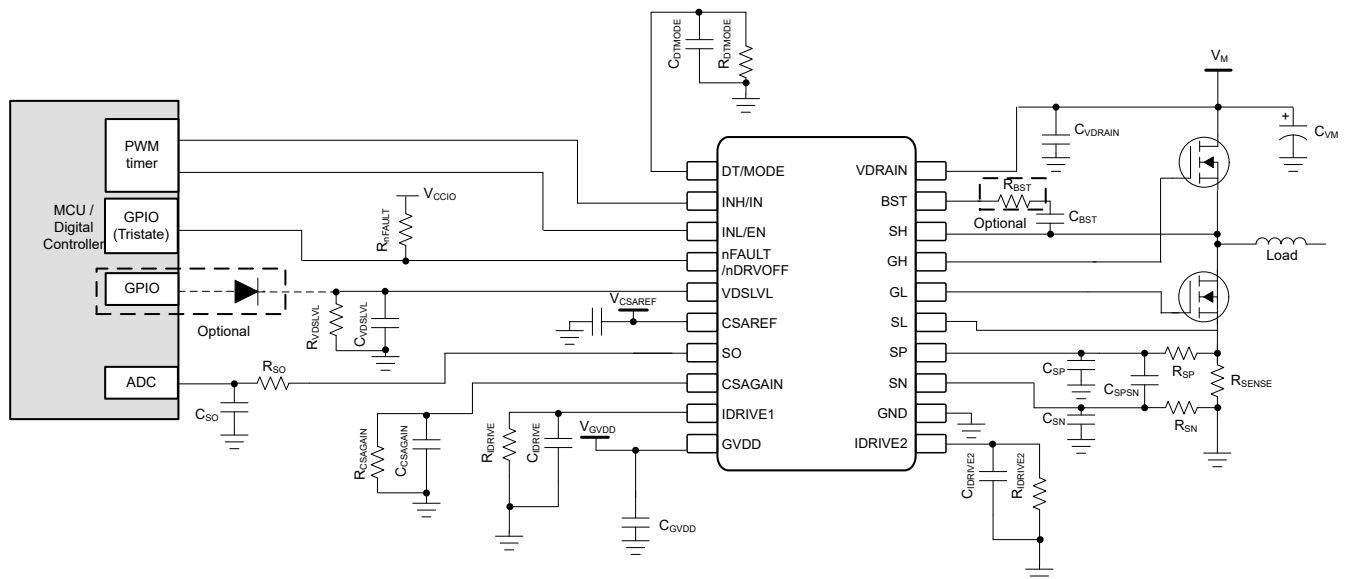


Figure 8-1. Typical application diagram of DRV8161

8.2.2 Typical Application with DRV8162 and DRV8162L

Figure shows a typical application diagram of DRV8162 and DRV8162L.

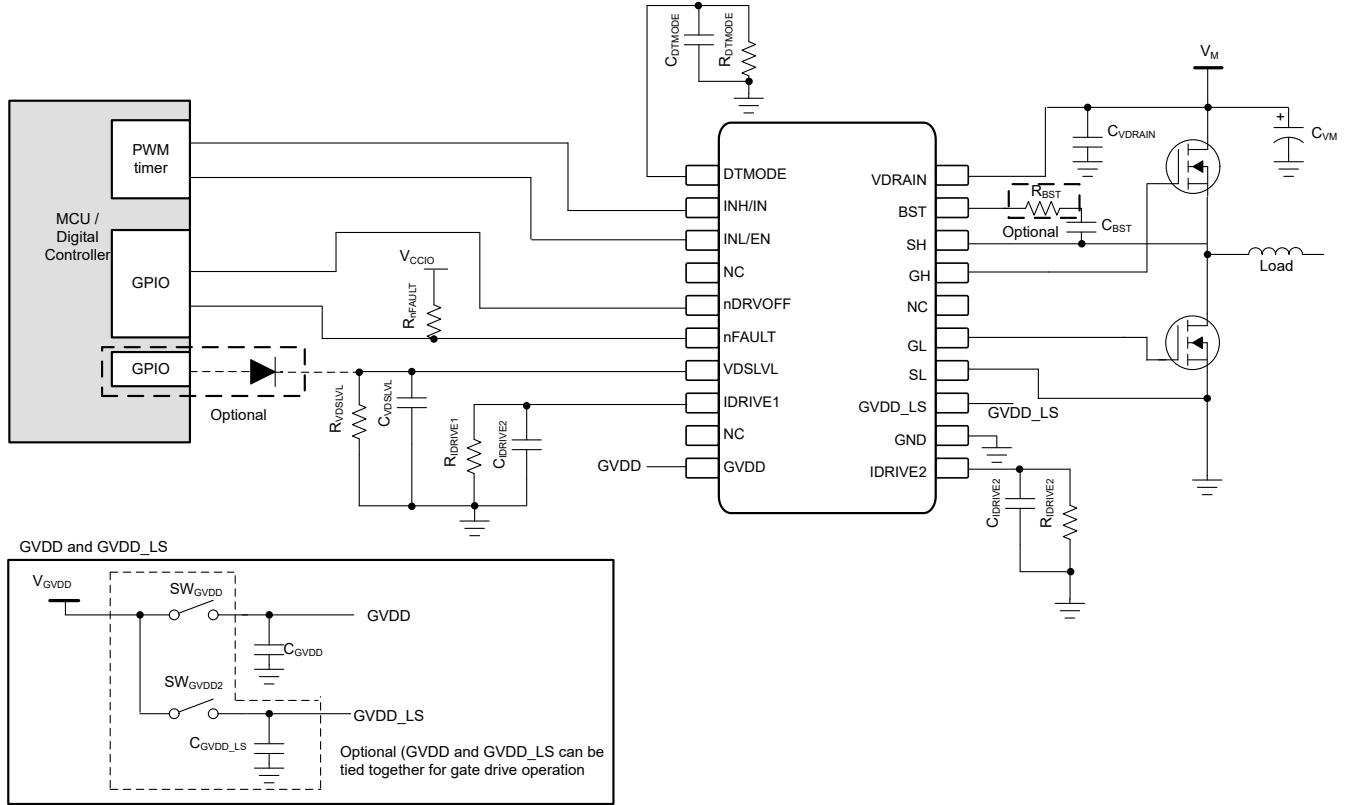


Figure 8-2. Typical application diagram of DRV8162 and DRV8162L

8.2.3 External Components

The table lists the recommended values of the external components for the gate driver.

Table 8-1. DRV816x External Components

COMPONENTS	PIN 1	PIN 2	RECOMMENDED
C_{BST}	BST	SH	1.0 μ F, V_{BST-SH} -rated capacitor between BST and SH depending on the total gate charge of external MOSFET Q_g . $C_{BST} > 20 \times Q_g / (V_{GH} - V_{SH})$. The maximum C_{BST} is 2.2 μ F,
C_{GVDD}	GVDD	GND	10 μ F, V_{GVDD} -rated capacitor. This capacitor can be shared with the other two DRV816x devices in 3-phase power stage design if the capacitor is placed sufficiently close to all the three devices. The voltage drop due to bootstrap operation at power up and during PWM switching must be reviewed by users.
C_{GVDD_LS}	GVDD_LS	GND	1 μ F, V_{GVDD} -rated capacitor
C_{VDRAIN}	VDRAIN	GND	0.1 μ F, V_{VDRAIN} -rated capacitor
R_{nFAULT}	V_{CCIO}	nFAULT	Pullup resistor 10K- Ω
$R_{IDRIVE1}$	IDRIVE1	GND	Hardware interface resistor See Section 7.3.2.4
$C_{IDRIVE1}$	IDRIVE1	GND	OPTIONAL: 0.1nF, 5V -rated capacitor
$R_{IDRIVE2}$	IDRIVE2	GND	Hardware interface resistor See Section 7.3.2.4
$C_{IDRIVE2}$	IDRIVE2	GND	OPTIONAL: 0.1nF, 5V -rated capacitor
R_{VDSLVL}	VDSLVL	GND	Hardware interface resistor See Section 7.3.2.5
C_{VDSLVL}	VDSLVL	GND	OPTIONAL: 0.1nF, 5V -rated capacitor
D_{VDSLVL}	VDSLVL	MCU	OPTIONAL: Diode between VDSLVL pin and MCU GPIO.
R_{DTMODE}	DT/MODE	GND	Hardware interface resistor See Section 7.3.2.6

Table 8-1. DRV816x External Components (continued)

COMPONENTS	PIN 1	PIN 2	RECOMMENDED
C_{DTMODE}	DT/MODE	GND	OPTIONAL: 0.1nF, 5V -rated capacitor
$R_{CSAGAIN}$	CSAGAIN	GND	Hardware interface resistor See Section 7.3.2.1
$C_{CSAGAIN}$	CSAGAIN	GND	OPTIONAL: 0.1nF, 5V -rated capacitor
C_{CSAREF}	CSAREF	GND	0.1 μ F, V_{CSAREF} -rated capacitor
R_{SENSE}	SP	SN	Sense shunt resistor
R_{SP}, R_{SN}	SP/SN	R_{SENSE}	OPTIONAL: 10 Ω for current sense amplifier input filter.
C_{SPSN}	SP	SN	OPTIONAL: 1nF ceramic capacitor for current sense amplifier input filter.
C_{SP}, C_{SN}	SP/SN	GND	OPTIONAL: 1nF ceramic capacitor for current sense amplifier input filter.

8.3 Layout

8.3.1 Layout Guidelines

- Minimize length and impedance of GH, SH, GL, and SL traces. Use as few vias as possible to minimize parasitic inductance. The recommendation is to increase these trace widths shortly after routing away from the device pin to minimize parasitic resistance.
- Keep bootstrap capacitor C_{BST} close to the corresponding pins
- Keep GVDD capacitors close to GVDD pin
- Keep VDRAIN capacitor close to VDRAIN pin to supply steady switching current for the charge pump.
- Additional bulk capacitance is required to bypass the high current path on the external MOSFETs. This bulk capacitance is placed such that the bulk capacitance minimizes the length of any high current paths through the external MOSFETs. The connecting metal traces are as wide as possible, with numerous vias connecting PCB layers. These practices minimize inductance and let the bulk capacitor deliver high current.
- Connect SL pin to MOSFET source, not directly to GND, for accurate VDS detection.
- DRV8161 only: Route SN/SP pins in parallel from the sense resistor to the device. Place filtering components close to the device pins to minimize post-filter noise coupling. Make sure that SN/SP stay separated from GND plane to achieve best CSA accuracy. The bypass capacitor across CSAREF and GND is placed closer to the device pin.
- The hardware interface resistors $R_{IDRIVE1}$, $R_{IDRIVE2}$, R_{VDSLVL} , R_{DTMODE} , and $R_{CSAGAIN}$ are placed as close as possible to the device pins.
- Minimize parallel routing to reduce noise coupling from potential noise source into any noise-sensitive device signals. The noise-sensitive signals include the multilevel hardware interface pins IDRIVE1, IDRIVE2, VDSLVL, DTMODE and CSAGAIN as well as the current sense amplifier output SO.

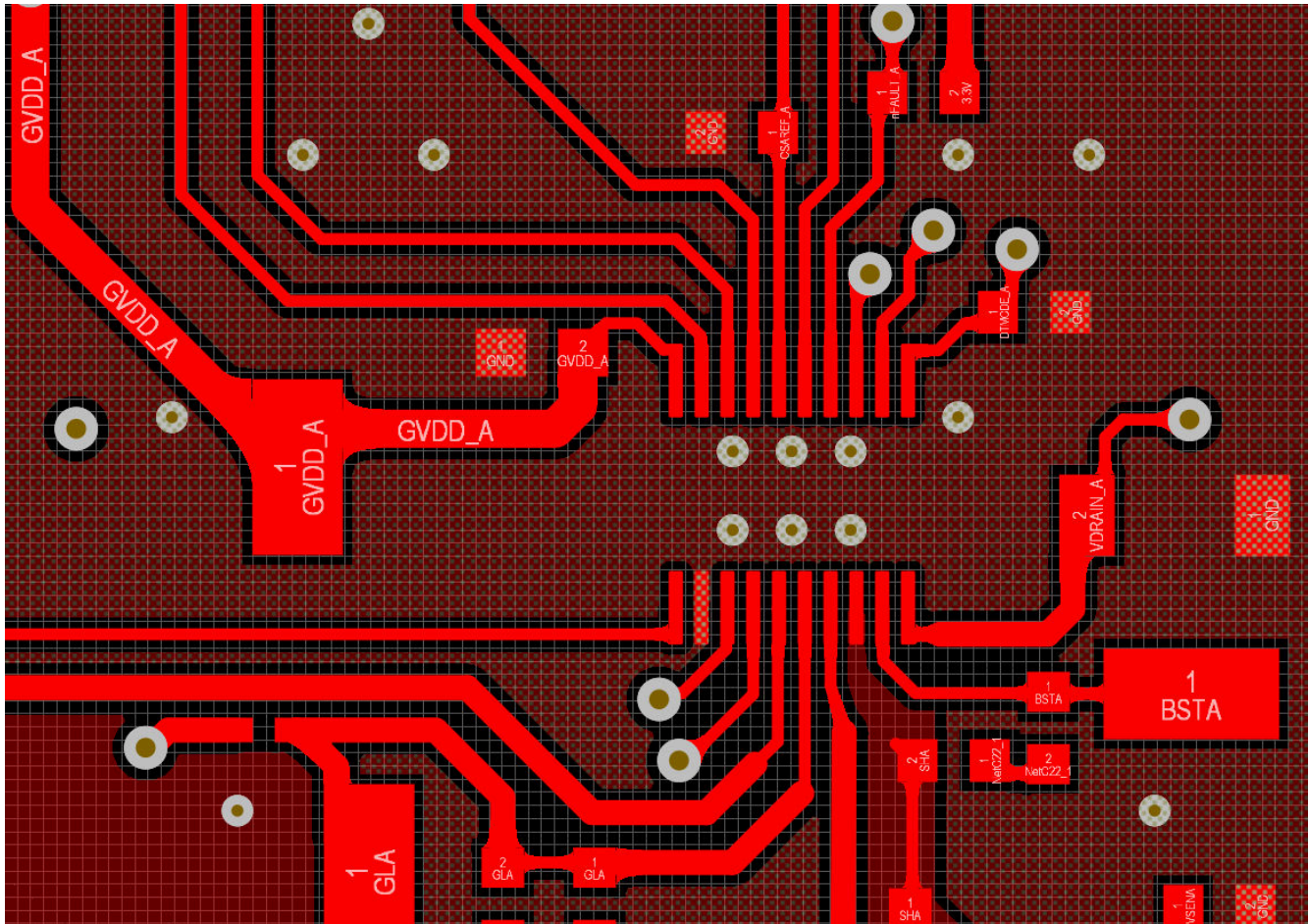


Figure 8-3. DRV8161 Layout

8.4 Power Supply Recommendations

The DRV8161x family of devices is designed to operate from an input voltage supply (VDRAIN) range from 5V to 90V. A 0.1µF ceramic capacitor rated for VDRAIN must be placed as close to the device as possible. In addition, a bulk capacitor must be included on the VDRAIN pin but can be shared with the bulk bypass capacitance for the external power MOSFETs. Additional bulk capacitance is required to bypass the external half-bridge MOSFETs and sized according to the application requirements.

8.4.1 Bulk Capacitance Sizing

Having appropriate local bulk capacitance is an important factor in motor drive system design. It is generally beneficial to have more bulk capacitance, while the disadvantages are increased cost and physical size. The amount of local capacitance depends on a variety of factors including:

- The highest current required by the motor system
- The power supply type, capacitance, and ability to source current
- The amount of parasitic inductance between the power supply and motor system
- The acceptable supply voltage ripple
- Type of motor (brushed DC, brushless DC, stepper)
- The motor startup and braking methods

The inductance between the power supply and motor drive system limits the rate current can change from the power supply. If the local bulk capacitance is too small, the system responds to excessive current demands or dumps from the motor with a change in voltage. When adequate bulk capacitance is used, the motor voltage remains stable and high current can be quickly supplied.

The data sheet provides a recommended minimum value, but system level testing is required to determine the appropriate sized bulk capacitor.

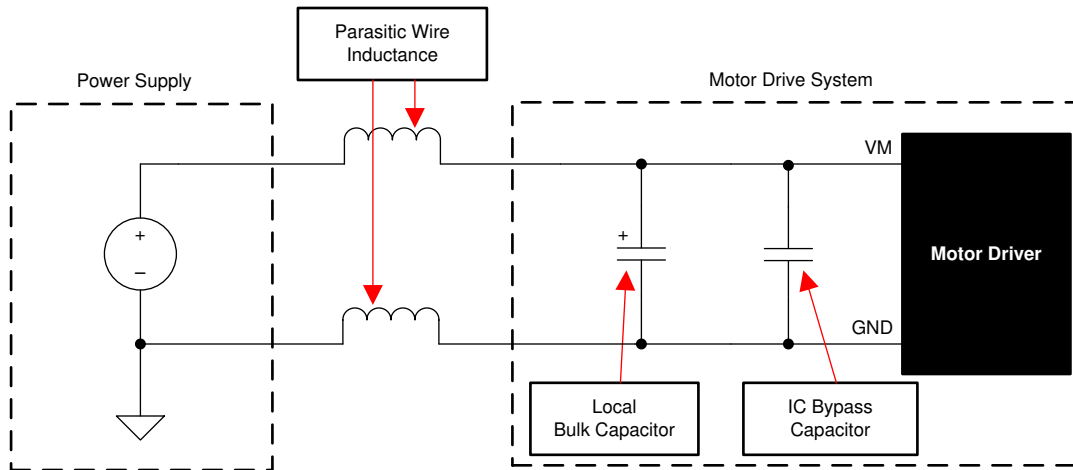


Figure 8-4. Motor Drive Supply Parasitics Example

9 Device and Documentation Support

9.1 Device Support

9.2 Documentation Support

9.2.1 Related Documentation

- Texas Instruments, [Understanding Smart Gate Drive \(Rev. D\) application report](#)
- Texas Instruments, [Brushless-DC Motor Driver Considerations and Selection Guide \(Rev. A\) application report](#)
- Texas Instruments, [Best Practices for Board Layout of Motor Drivers \(Rev. B\) application note](#)
- Texas Instruments, [Hardware Design Considerations for an Electric Bicycle Using a BLDC Motor application report](#)
- Texas Instruments, [Sensored 3-Phase BLDC Motor Control Using MSP430 application report](#)

9.3 Receiving Notification of Documentation Updates

To receive notification of documentation updates, navigate to the device product folder on ti.com. Click on *Notifications* to register and receive a weekly digest of any product information that has changed. For change details, review the revision history included in any revised document.

9.4 Support Resources

TI E2E™ [support forums](#) are an engineer's go-to source for fast, verified answers and design help — straight from the experts. Search existing answers or ask your own question to get the quick design help you need.

Linked content is provided "AS IS" by the respective contributors. They do not constitute TI specifications and do not necessarily reflect TI's views; see TI's [Terms of Use](#).

9.5 Trademarks

TI E2E™ is a trademark of Texas Instruments.
All trademarks are the property of their respective owners.

9.6 Electrostatic Discharge Caution



This integrated circuit can be damaged by ESD. Texas Instruments recommends that all integrated circuits be handled with appropriate precautions. Failure to observe proper handling and installation procedures can cause damage.

ESD damage can range from subtle performance degradation to complete device failure. Precision integrated circuits may be more susceptible to damage because very small parametric changes could cause the device not to meet its published specifications.

9.7 Glossary

[TI Glossary](#) This glossary lists and explains terms, acronyms, and definitions.

9.8 Community Resources

10 Revision History

NOTE: Page numbers for previous revisions may differ from page numbers in the current version.

Changes from Revision B (December 2024) to Revision C (February 2025)	Page
• Updated DRV8162 and DRV8162L status to production data.....	1

Changes from Revision A (July 2024) to Revision B (December 2024)	Page
• Updated the DRV8161 to production data.....	1

Changes from Revision * (May 2024) to Revision A (July 2024)	Page
• Updated DRV8162L status to Advance Information.....	1

11 Mechanical, Packaging, and Orderable Information

The following pages include mechanical, packaging, and orderable information. This information is the most current data available for the designated devices. This data is subject to change without notice and revision of this document. For browser-based versions of this data sheet, refer to the left-hand navigation.

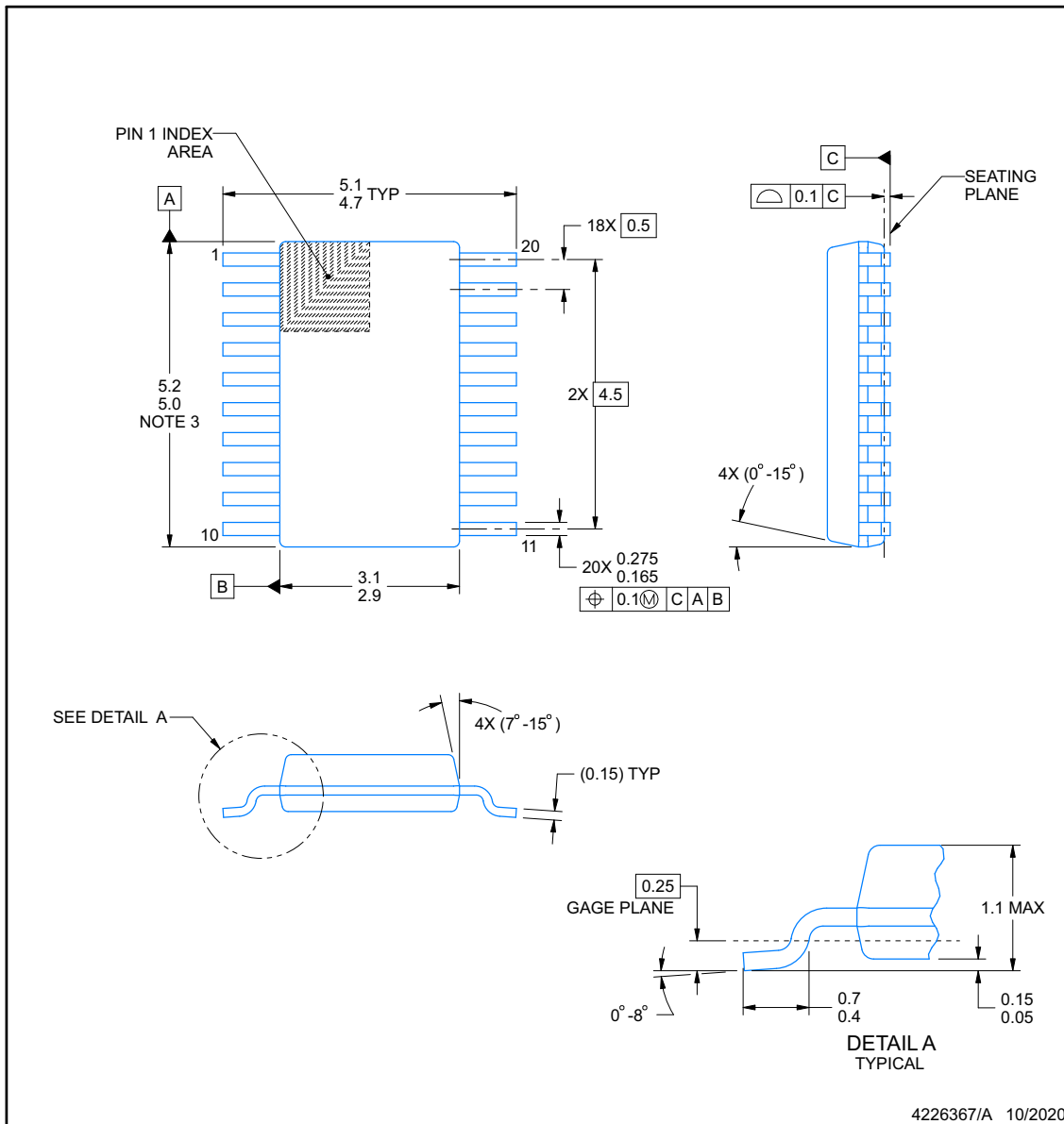
PACKAGE OUTLINE

DGS0020A



VSSOP - 1.1 mm max height

SMALL OUTLINE PACKAGE



NOTES:

PowerPAD is a trademark of Texas Instruments.

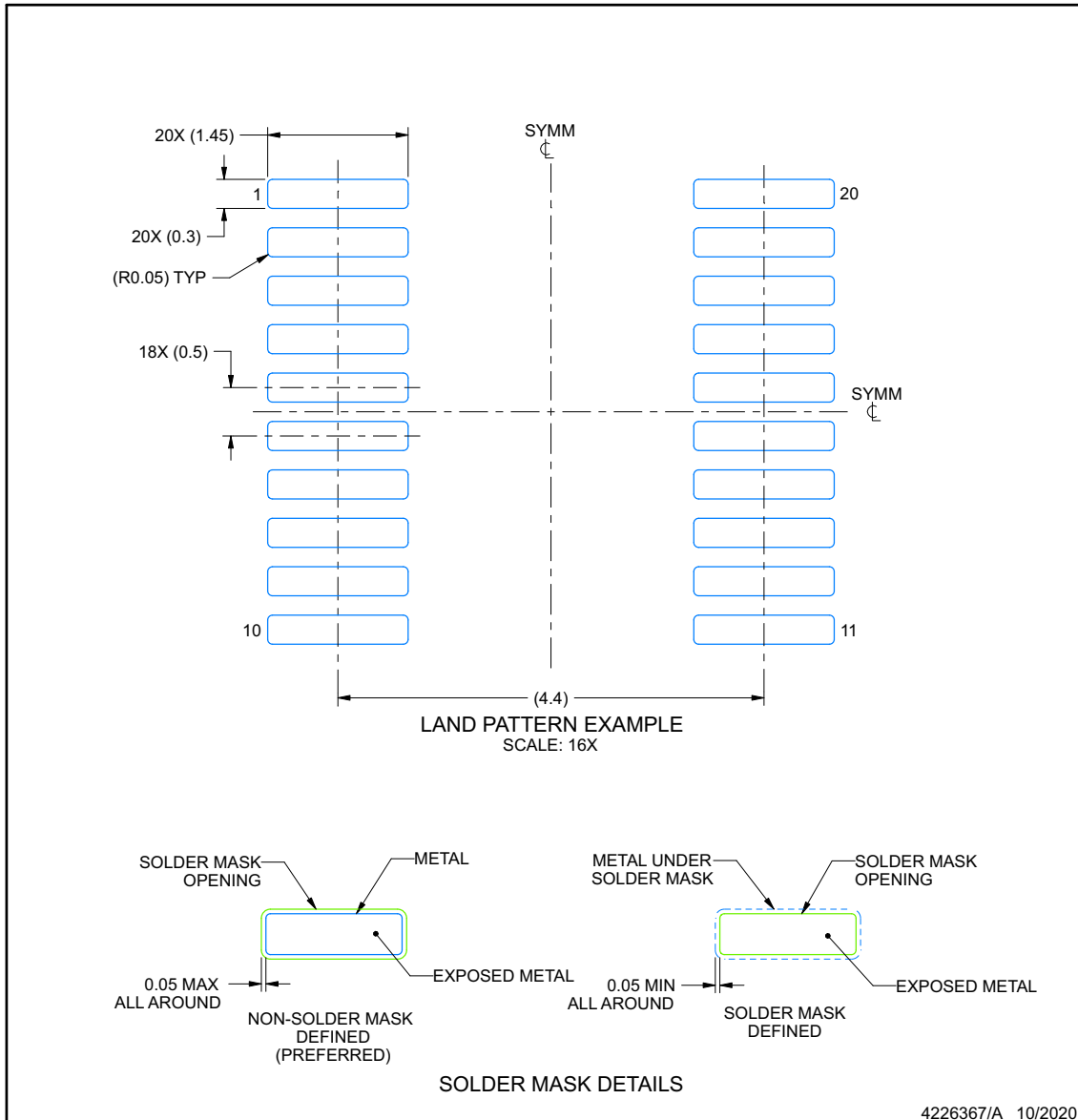
1. All linear dimensions are in millimeters. Any dimensions in parenthesis are for reference only. Dimensioning and tolerancing per ASME Y14.5M.
2. This drawing is subject to change without notice.
3. This dimension does not include mold flash, protrusions, or gate burrs. Mold flash, protrusions, or gate burrs shall not exceed 0.15 mm per side.
4. No JEDEC registration as of September 2020.
5. Features may differ or may not be present.

EXAMPLE BOARD LAYOUT

DGS0020A

VSSOP - 1.1 mm max height

SMALL OUTLINE PACKAGE



NOTES: (continued)

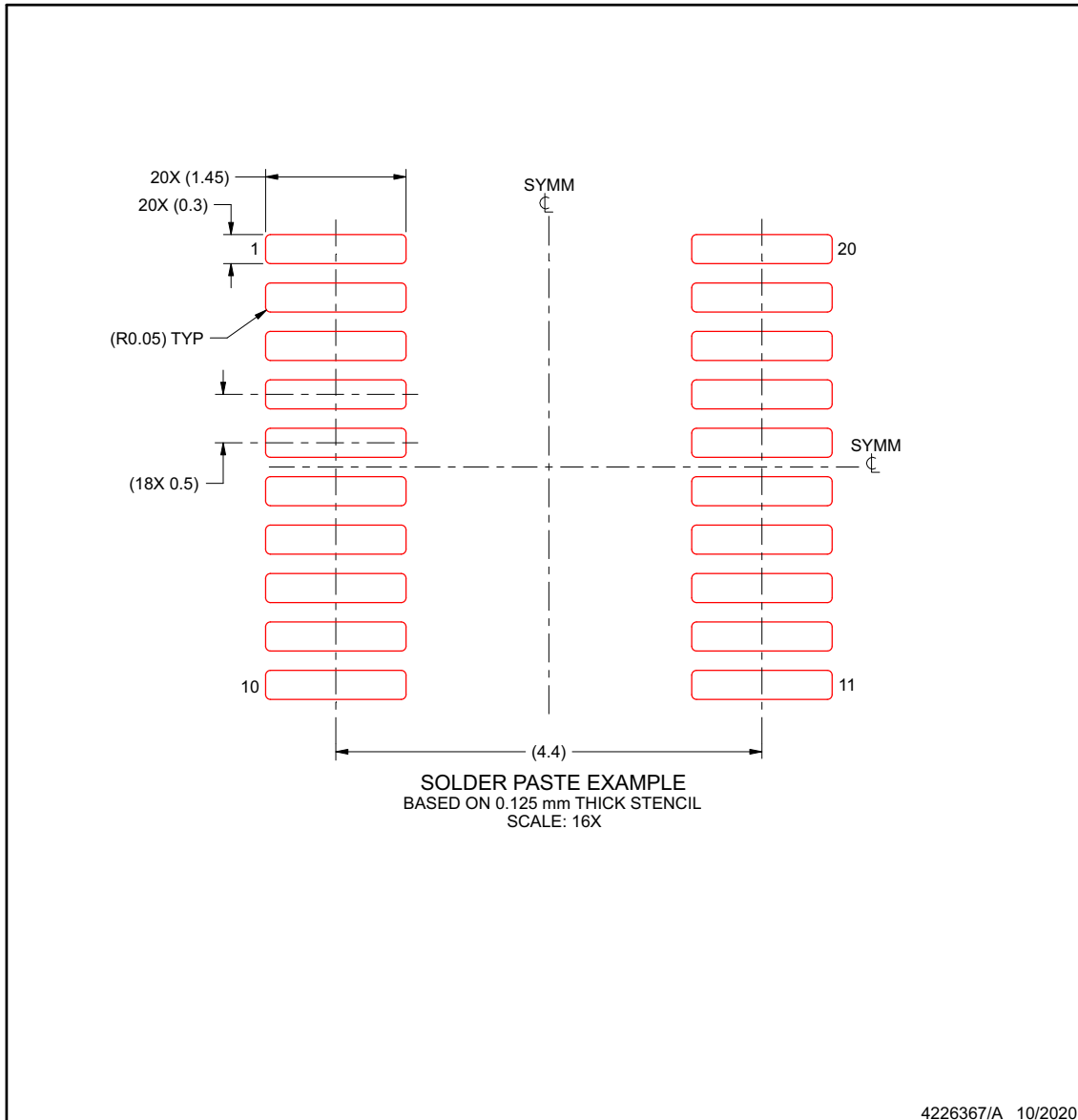
6. Publication IPC-7351 may have alternate designs.
7. Solder mask tolerances between and around signal pads can vary based on board fabrication site.
8. This package is designed to be soldered to a thermal pad on the board. For more information, see Texas Instruments literature numbers SLMA002 (www.ti.com/lit/slma002) and SLMA004 (www.ti.com/lit/slma004).
9. Size of metal pad may vary due to creepage requirement.
10. Vias are optional depending on application, refer to device data sheet. It is recommended that vias under paste be filled, plugged or tented.

EXAMPLE STENCIL DESIGN

DGS0020A

VSSOP - 1.1 mm max height

SMALL OUTLINE PACKAGE



NOTES: (continued)

11. Laser cutting apertures with trapezoidal walls and rounded corners may offer better paste release. IPC-7525 may have alternate design recommendations.
12. Board assembly site may have different recommendations for stencil design.

PACKAGING INFORMATION

Orderable part number	Status (1)	Material type (2)	Package Pins	Package qty Carrier	RoHS (3)	Lead finish/ Ball material (4)	MSL rating/ Peak reflow (5)	Op temp (°C)	Part marking (6)
DRV8161DGSR	Active	Production	VSSOP (DGS) 20	5000 LARGE T&R	Yes	FULL NIPDAU	Level-1-260C-UNLIM	-40 to 125	8161
DRV8161DGSR.A	Active	Production	VSSOP (DGS) 20	5000 LARGE T&R	Yes	FULL NIPDAU	Level-1-260C-UNLIM	-40 to 125	8161
DRV8162DGSR	Active	Production	VSSOP (DGS) 20	5000 LARGE T&R	Yes	FULL NIPDAU	Level-1-260C-UNLIM	-40 to 125	8162
DRV8162DGSR.A	Active	Production	VSSOP (DGS) 20	5000 LARGE T&R	Yes	FULL NIPDAU	Level-1-260C-UNLIM	-40 to 125	8162
DRV8162LDGSR	Active	Production	VSSOP (DGS) 20	5000 LARGE T&R	Yes	FULL NIPDAU	Level-1-260C-UNLIM	-40 to 125	8162L
DRV8162LDGSR.A	Active	Production	VSSOP (DGS) 20	5000 LARGE T&R	Yes	FULL NIPDAU	Level-1-260C-UNLIM	-40 to 125	8162L

⁽¹⁾ **Status:** For more details on status, see our [product life cycle](#).

⁽²⁾ **Material type:** When designated, preproduction parts are prototypes/experimental devices, and are not yet approved or released for full production. Testing and final process, including without limitation quality assurance, reliability performance testing, and/or process qualification, may not yet be complete, and this item is subject to further changes or possible discontinuation. If available for ordering, purchases will be subject to an additional waiver at checkout, and are intended for early internal evaluation purposes only. These items are sold without warranties of any kind.

⁽³⁾ **RoHS values:** Yes, No, RoHS Exempt. See the [TI RoHS Statement](#) for additional information and value definition.

⁽⁴⁾ **Lead finish/Ball material:** Parts may have multiple material finish options. Finish options are separated by a vertical ruled line. Lead finish/Ball material values may wrap to two lines if the finish value exceeds the maximum column width.

⁽⁵⁾ **MSL rating/Peak reflow:** The moisture sensitivity level ratings and peak solder (reflow) temperatures. In the event that a part has multiple moisture sensitivity ratings, only the lowest level per JEDEC standards is shown. Refer to the shipping label for the actual reflow temperature that will be used to mount the part to the printed circuit board.

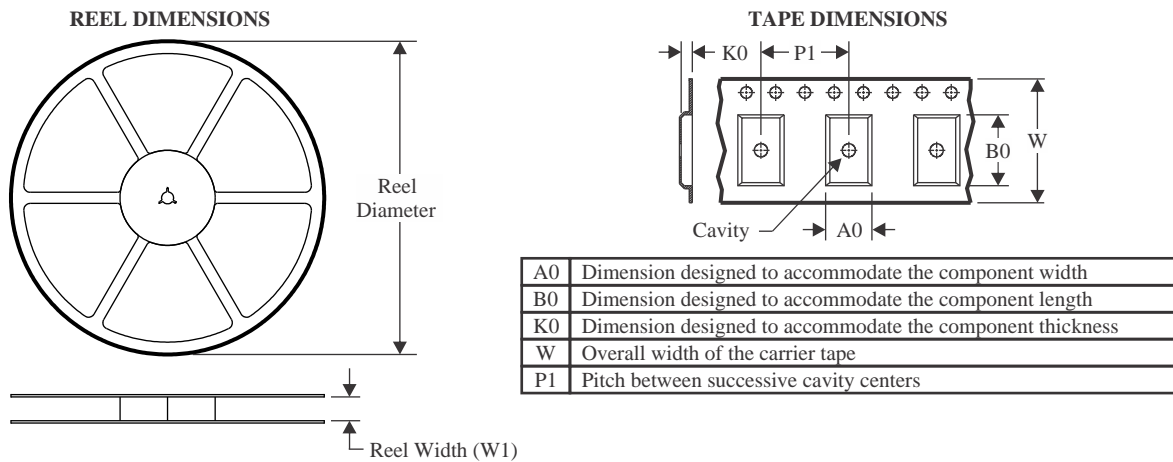
⁽⁶⁾ **Part marking:** There may be an additional marking, which relates to the logo, the lot trace code information, or the environmental category of the part.

Multiple part markings will be inside parentheses. Only one part marking contained in parentheses and separated by a "~" will appear on a part. If a line is indented then it is a continuation of the previous line and the two combined represent the entire part marking for that device.

Important Information and Disclaimer: The information provided on this page represents TI's knowledge and belief as of the date that it is provided. TI bases its knowledge and belief on information provided by third parties, and makes no representation or warranty as to the accuracy of such information. Efforts are underway to better integrate information from third parties. TI has taken and continues to take reasonable steps to provide representative and accurate information but may not have conducted destructive testing or chemical analysis on incoming materials and chemicals. TI and TI suppliers consider certain information to be proprietary, and thus CAS numbers and other limited information may not be available for release.

In no event shall TI's liability arising out of such information exceed the total purchase price of the TI part(s) at issue in this document sold by TI to Customer on an annual basis.

TAPE AND REEL INFORMATION



QUADRANT ASSIGNMENTS FOR PIN 1 ORIENTATION IN TAPE



*All dimensions are nominal

Device	Package Type	Package Drawing	Pins	SPQ	Reel Diameter (mm)	Reel Width W1 (mm)	A0 (mm)	B0 (mm)	K0 (mm)	P1 (mm)	W (mm)	Pin1 Quadrant
DRV8161DGSR	VSSOP	DGS	20	5000	330.0	16.4	5.4	5.4	1.45	8.0	16.0	Q1
DRV8162DGSR	VSSOP	DGS	20	5000	330.0	16.4	5.4	5.4	1.45	8.0	16.0	Q1
DRV8162LDGSR	VSSOP	DGS	20	5000	330.0	16.4	5.4	5.4	1.45	8.0	16.0	Q1

TAPE AND REEL BOX DIMENSIONS


*All dimensions are nominal

Device	Package Type	Package Drawing	Pins	SPQ	Length (mm)	Width (mm)	Height (mm)
DRV8161DGSR	VSSOP	DGS	20	5000	353.0	353.0	32.0
DRV8162DGSR	VSSOP	DGS	20	5000	353.0	353.0	32.0
DRV8162LDGSR	VSSOP	DGS	20	5000	353.0	353.0	32.0

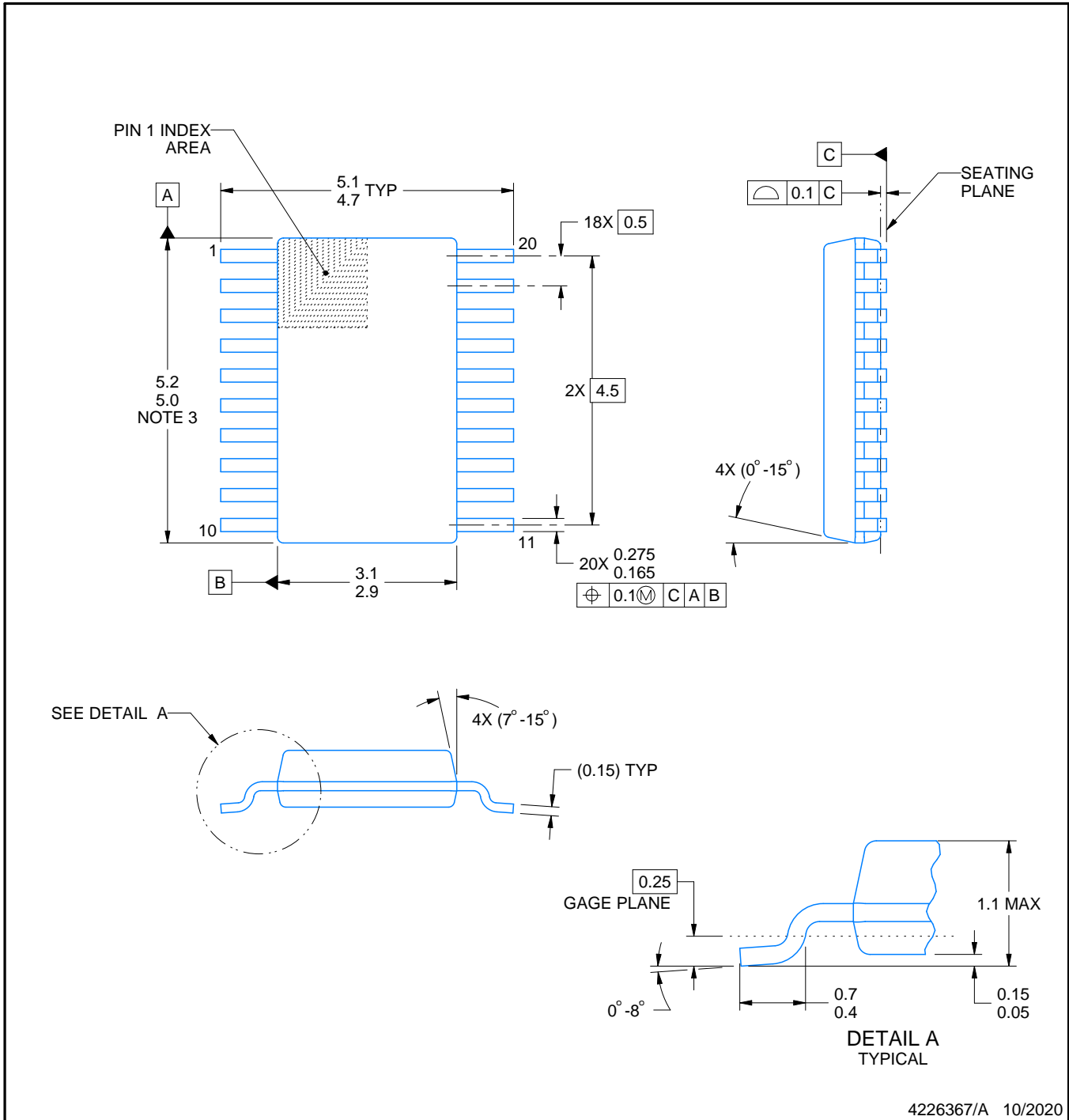
DGS0020A



PACKAGE OUTLINE

VSSOP - 1.1 mm max height

SMALL OUTLINE PACKAGE



4226367/A 10/2020

NOTES:

PowerPAD is a trademark of Texas Instruments.

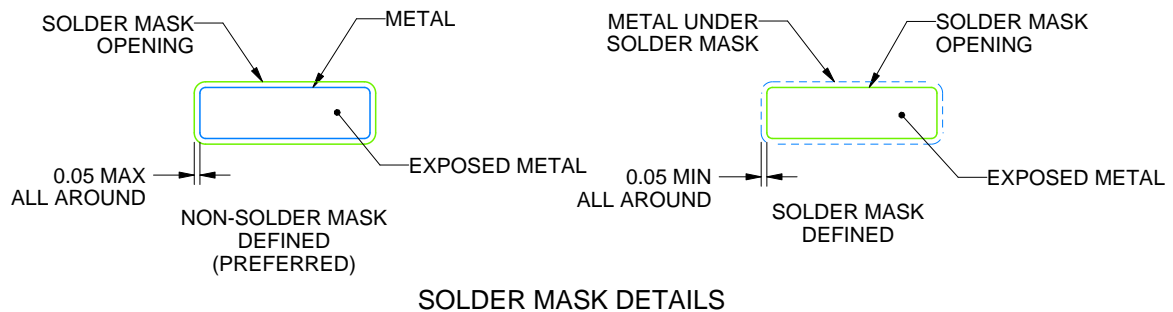
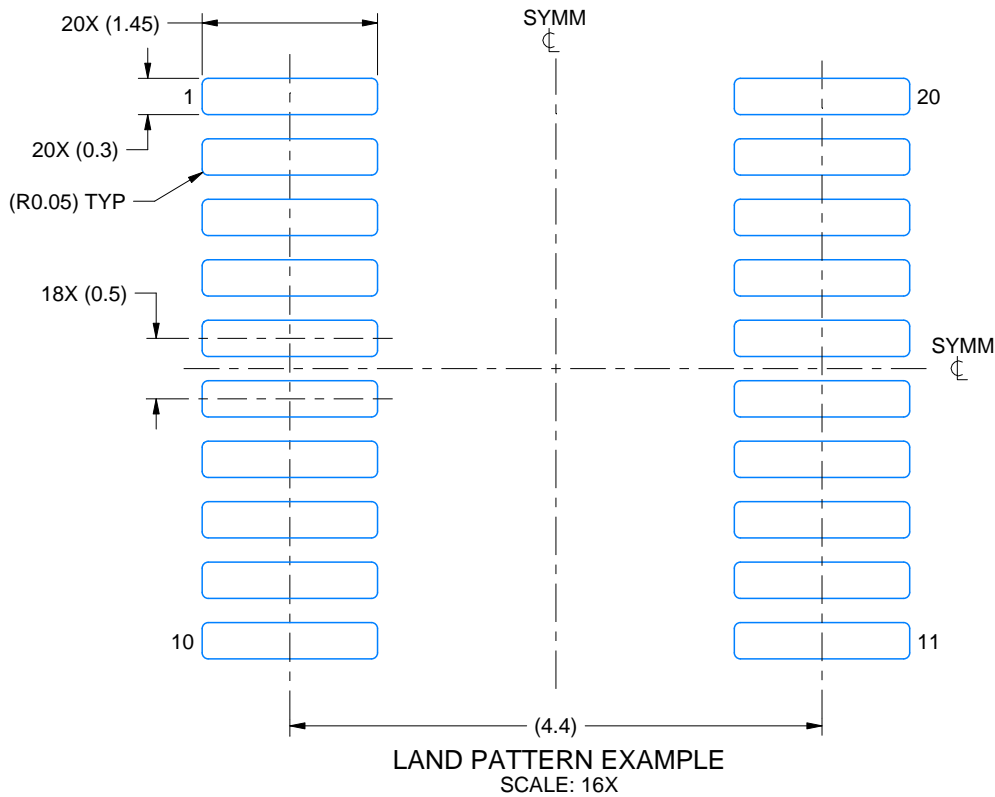
1. All linear dimensions are in millimeters. Any dimensions in parenthesis are for reference only. Dimensioning and tolerancing per ASME Y14.5M.
2. This drawing is subject to change without notice.
3. This dimension does not include mold flash, protrusions, or gate burrs. Mold flash, protrusions, or gate burrs shall not exceed 0.15 mm per side.
4. No JEDEC registration as of September 2020.
5. Features may differ or may not be present.

EXAMPLE BOARD LAYOUT

DGS0020A

VSSOP - 1.1 mm max height

SMALL OUTLINE PACKAGE



4226367/A 10/2020

NOTES: (continued)

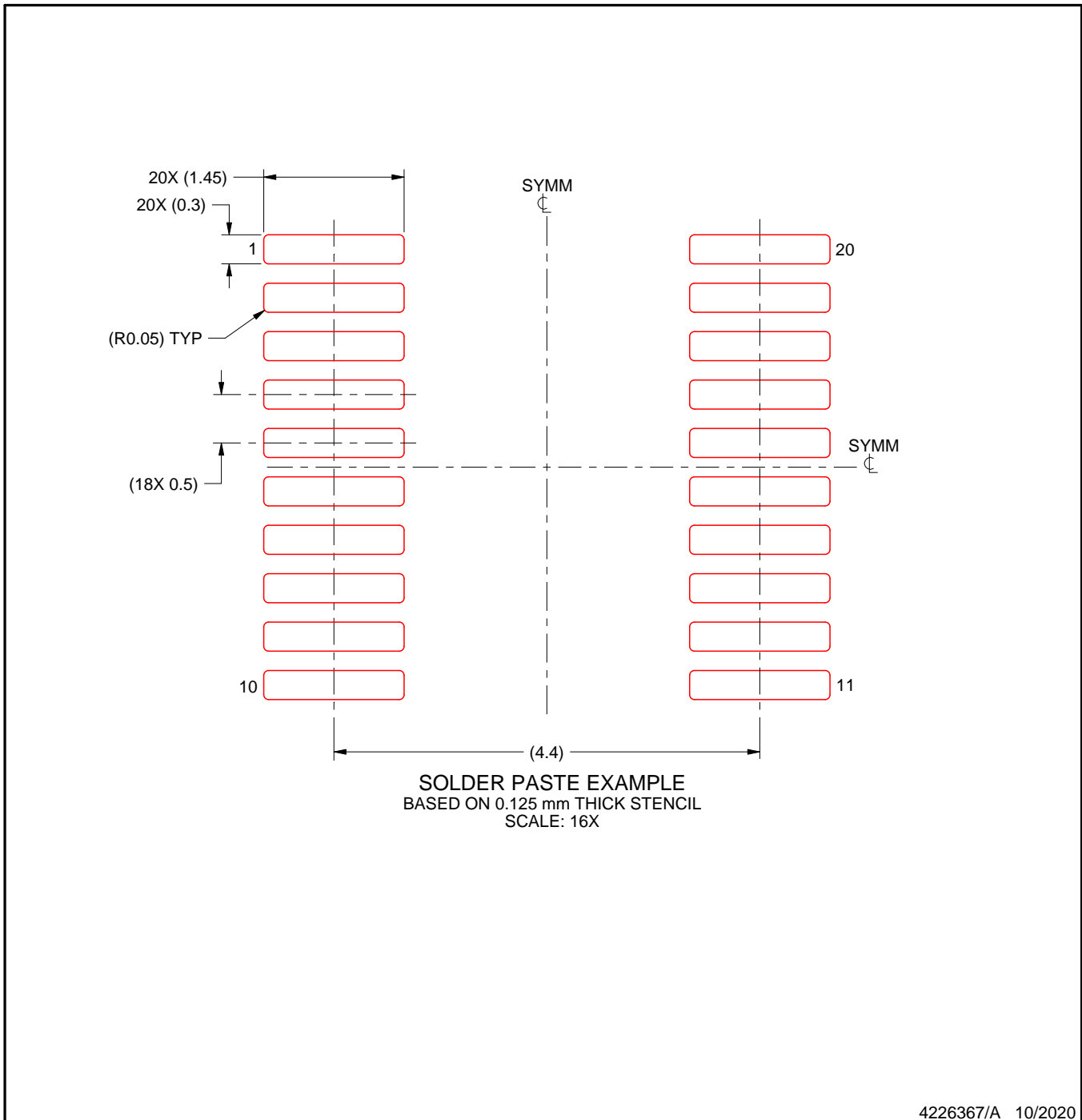
6. Publication IPC-7351 may have alternate designs.
7. Solder mask tolerances between and around signal pads can vary based on board fabrication site.
8. This package is designed to be soldered to a thermal pad on the board. For more information, see Texas Instruments literature numbers SLMA002 (www.ti.com/lit/slma002) and SLMA004 (www.ti.com/lit/slma004).
9. Size of metal pad may vary due to creepage requirement.
10. Vias are optional depending on application, refer to device data sheet. It is recommended that vias under paste be filled, plugged or tented.

EXAMPLE STENCIL DESIGN

DGS0020A

VSSOP - 1.1 mm max height

SMALL OUTLINE PACKAGE



NOTES: (continued)

11. Laser cutting apertures with trapezoidal walls and rounded corners may offer better paste release. IPC-7525 may have alternate design recommendations.
12. Board assembly site may have different recommendations for stencil design.

IMPORTANT NOTICE AND DISCLAIMER

TI PROVIDES TECHNICAL AND RELIABILITY DATA (INCLUDING DATASHEETS), DESIGN RESOURCES (INCLUDING REFERENCE DESIGNS), APPLICATION OR OTHER DESIGN ADVICE, WEB TOOLS, SAFETY INFORMATION, AND OTHER RESOURCES "AS IS" AND WITH ALL FAULTS, AND DISCLAIMS ALL WARRANTIES, EXPRESS AND IMPLIED, INCLUDING WITHOUT LIMITATION ANY IMPLIED WARRANTIES OF MERCHANTABILITY, FITNESS FOR A PARTICULAR PURPOSE OR NON-INFRINGEMENT OF THIRD PARTY INTELLECTUAL PROPERTY RIGHTS.

These resources are intended for skilled developers designing with TI products. You are solely responsible for (1) selecting the appropriate TI products for your application, (2) designing, validating and testing your application, and (3) ensuring your application meets applicable standards, and any other safety, security, regulatory or other requirements.

These resources are subject to change without notice. TI grants you permission to use these resources only for development of an application that uses the TI products described in the resource. Other reproduction and display of these resources is prohibited. No license is granted to any other TI intellectual property right or to any third party intellectual property right. TI disclaims responsibility for, and you fully indemnify TI and its representatives against any claims, damages, costs, losses, and liabilities arising out of your use of these resources.

TI's products are provided subject to [TI's Terms of Sale](#), [TI's General Quality Guidelines](#), or other applicable terms available either on [ti.com](#) or provided in conjunction with such TI products. TI's provision of these resources does not expand or otherwise alter TI's applicable warranties or warranty disclaimers for TI products. Unless TI explicitly designates a product as custom or customer-specified, TI products are standard, catalog, general purpose devices.

TI objects to and rejects any additional or different terms you may propose.

Copyright © 2026, Texas Instruments Incorporated

Last updated 10/2025