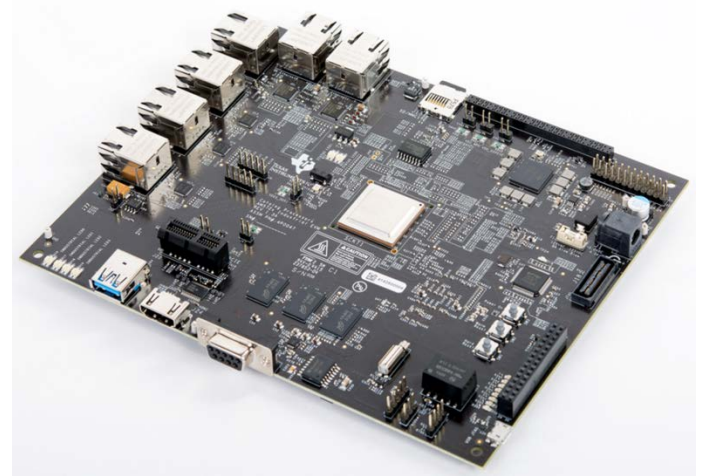
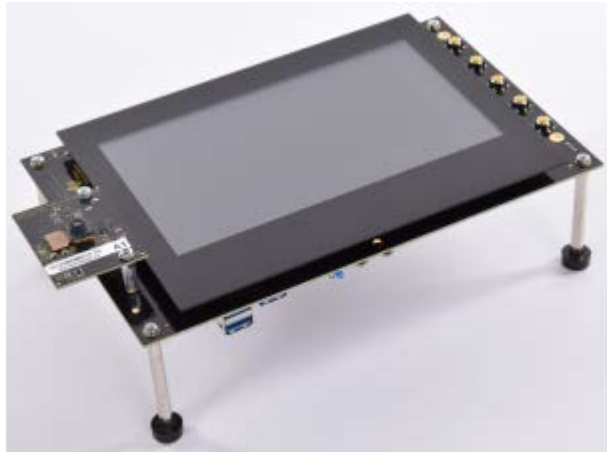
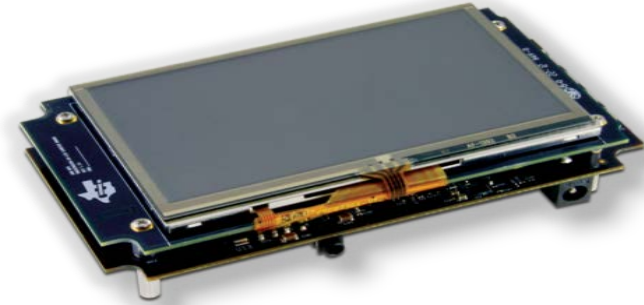


How to Build an SD Card with Processor SDK Linux

Agenda

- What is the SD (Secure Digital) card and why do you need it?
- What you need to build an SD Card
- Building the SD Card
- Testing the SD Card

What is the purpose of the SD card?



What is the purpose of the SD card?

- It holds the software necessary to boot the board
- The pre-built images provided with the SDK support the out-of-box demonstration, experimentation platform, and product development kickoff.
- Shown here: Micro SD card alongside the BeagleBone Black (Sitara AM335x processor)

<https://beagleboard.org/black>



What you will need to build an SD Card

- USB SD card reader
- SD card; New or not, it does not matter



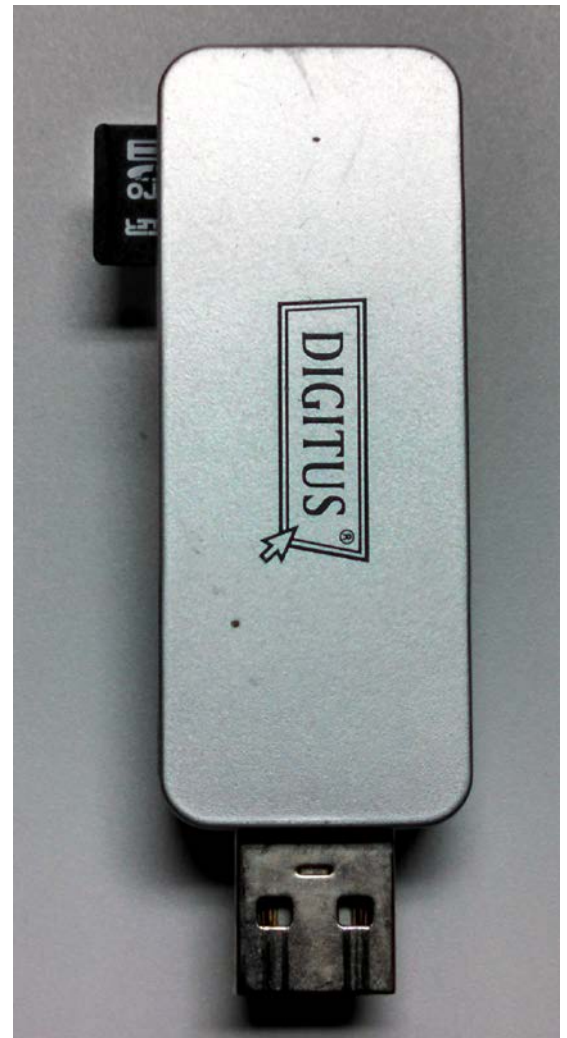
What you will need to build an SD Card

- USB SD card reader
- SD card; New or not, it does not matter
- Processor SDK Linux installed on a PC running Linux



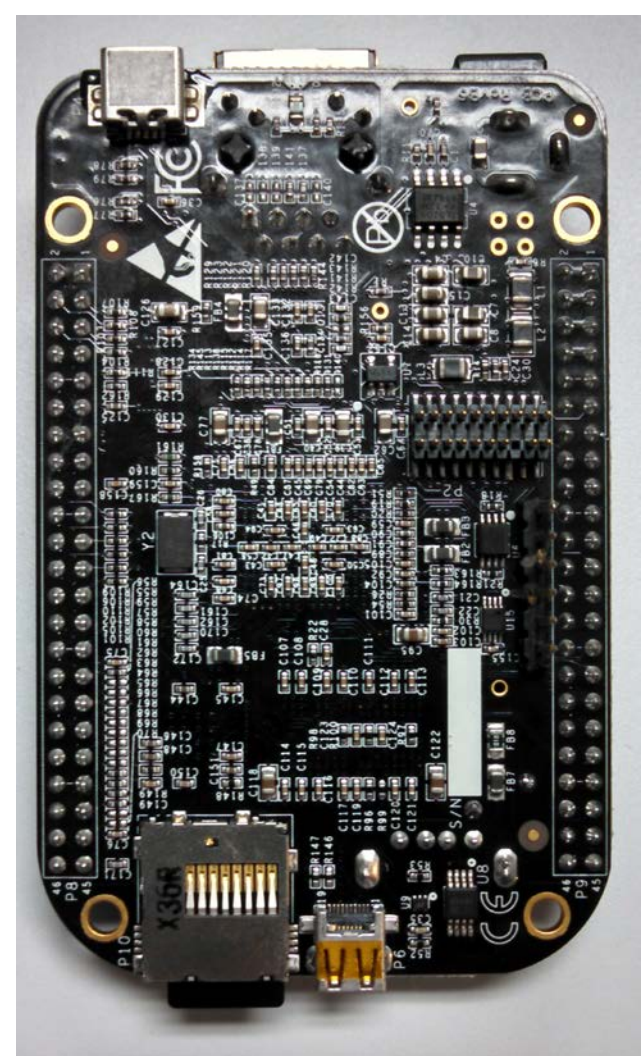
Building the SD card

- Insert the card into the USB reader.
- Insert the USB reader into the Linux Host machine.



Install and use the SD card

- The script partitions and copies images to the SD card
- Example of a micro SD Card for the Beagle Bone Black, card inserted



For More Information

- Processor SDK Documentation
 - [Processor SDK Linux Getting Started Guide](#)
 - [Processor SDK Linux Software Developer's Guide](#)
including [Processor SDK Linux create SD card script](#)
- [Processor SDK Training Series](#)
 - [Processor SDK Overview](#)
 - [Processor SDK Linux Overview](#)
 - [Processor SDK Linux Components](#)
 - [Processor SDK Linux Matrix](#)
 - [Processor SDK Linux Installation](#)
- For questions about this training, refer to the E2E Community Forum:
<https://e2e.ti.com/support>



©Copyright 2017 Texas Instruments Incorporated. All rights reserved.

This material is provided strictly “as-is,” for informational purposes only, and without any warranty.
Use of this material is subject to TI’s **Terms of Use**, viewable at TI.com