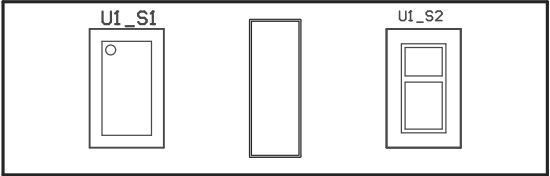
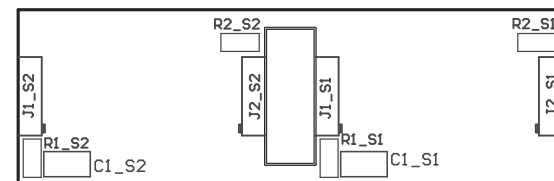


- ZZ1 ■Install label in silkscreened box after final wash. Text shall be 8 pt font. Text shall be per the Label Table in the PDF schematic.
- ZZ2 ■These assemblies are ESD sensitive, ESD precautions shall be observed.
- ZZ3 ■These assemblies must be clean and free from flux and all contaminants. Use of no clean flux is not acceptable.
- ZZ4 ■These assemblies must comply with workmanship standards IPC-A-610 Class 2, unless otherwise specified.



COMPONENTS MARKED 'DNP' SHOULD NOT BE POPULATED.  
ASSEMBLY VARIANT: 001

PCB VIEWED FROM TOP SIDE	BOARD #: TIDA-01580	REV: E1	SVN REV: Not In VersionControl
LAYER NAME = M5 Assembly Top	TID #: TIDA-01580		
PLOT NAME = Top Assembly Drawing	GENERATED : 4/9/2018	5:15:29 PM	TEXAS INSTRUMENTS



COMPONENTS MARKED 'DNP' SHOULD NOT BE POPULATED.  
ASSEMBLY VARIANT: 001

PCB VIEWED FROM BOTTOM SIDE	BOARD #: TIDA-01580	REV: E1	SVN REV: Not In VersionControl
LAYER NAME = M6 Assembly Bottom	TID #: TIDA-01580		
PLOT NAME = Bottom Assembly Drawing	GENERATED : 4/9/2018	5:15:30 PM	TEXAS INSTRUMENTS