

| Revision History | | | | |
|------------------|-------|---------------|-------------|-------|
| Rev | ECN # | Approved Date | Approved by | Notes |
| N/A | N/A | N/A | N/A | N/A |

Page 2 BLOCK DIAGRAM

Page 3 ADC1,ADC2

Page 4 ADC1,ADC2 INPUT CONNECTORS


Page 5 ADC1 FILTER CONNECTORS

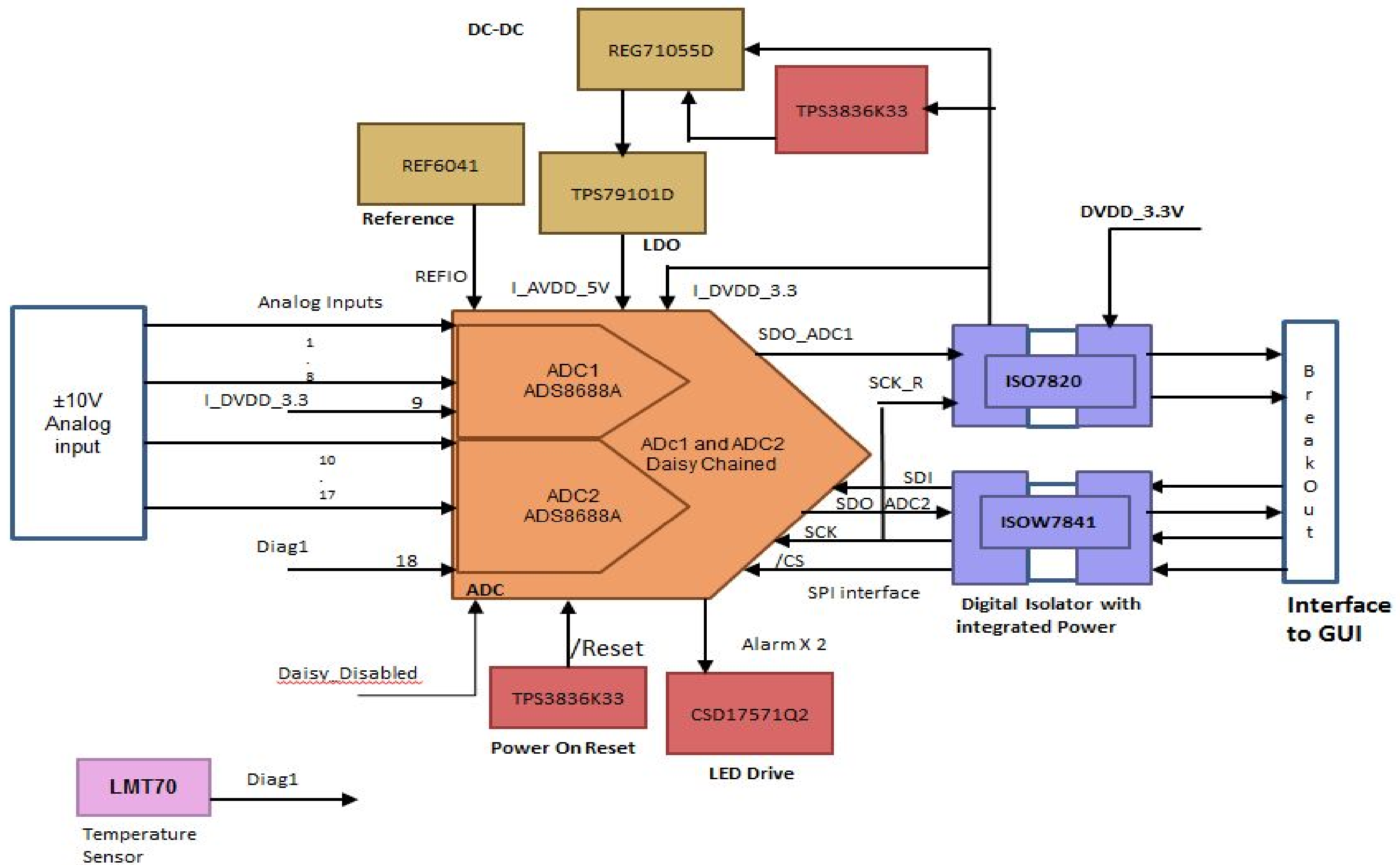
Page 6 ADC2 FILTER CONNECTORS

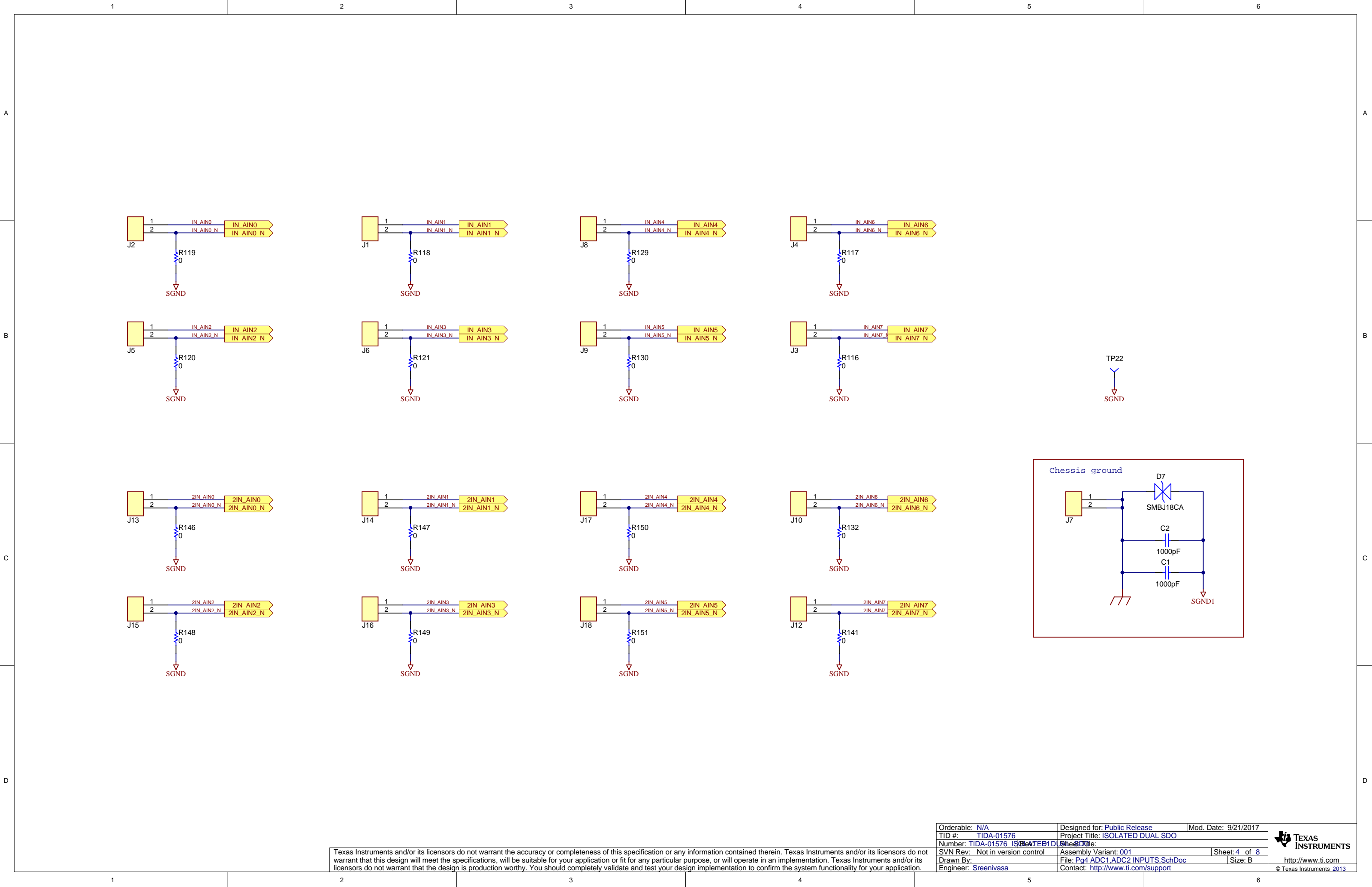
Page 7 POWER SUPPLY + DIGITAL ISOLATOR WITH INTEGRATED POWER

Page 8 Mounting holes, Fiducials Marking

Texas Instruments and/or its licensors do not warrant the accuracy or completeness of this specification or any information contained therein. Texas Instruments and/or its licensors do not warrant that this design will meet the specifications, will be suitable for your application or fit for any particular purpose, or will operate in an implementation. Texas Instruments and/or its licensors do not warrant that the design is production worthy. You should completely validate and test your design implementation to confirm the system functionality for your application.

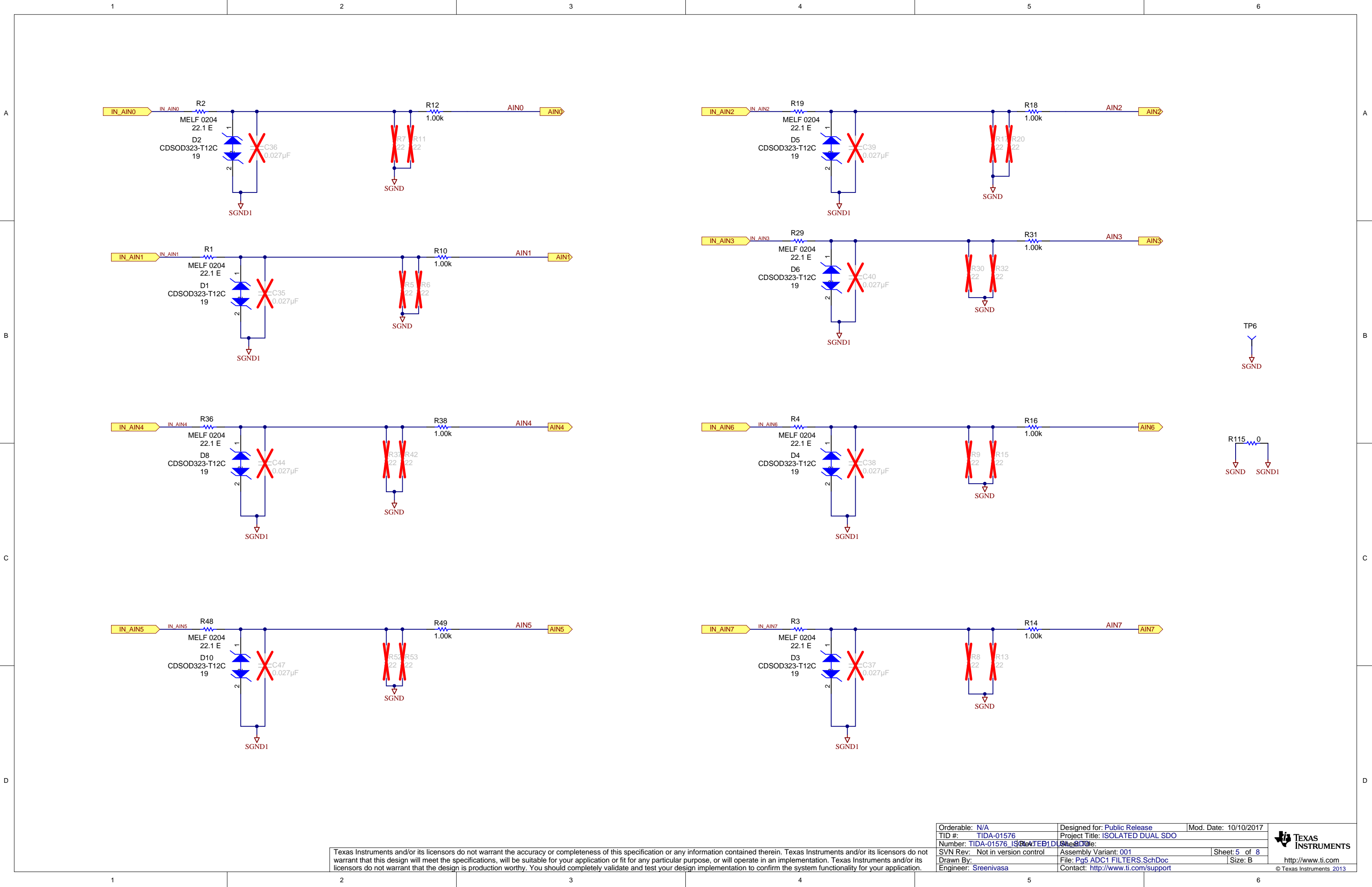
| | | | |
|---------------------------------|--|----------------------|---|
| Orderable: N/A | Designed for: Public Release | Mod. Date: 9/19/2017 |  |
| TID #: TIDA-01576 | Project Title: ISOLATED DUAL SDO | | |
| Number: TIDA-01576 | Doc. Title: ISOLATED DUAL SDO | | |
| SVN Rev: Not in version control | Assembly Variant: 001 | Sheet: 1 of 8 | |
| Drawn By: Sreenivasa | File: Pg1 Index Page.SchDoc | Size: B | |
| Engineer: Sreenivasa | Contact: http://www.ti.com/support | | http://www.ti.com © Texas Instruments 2013 |





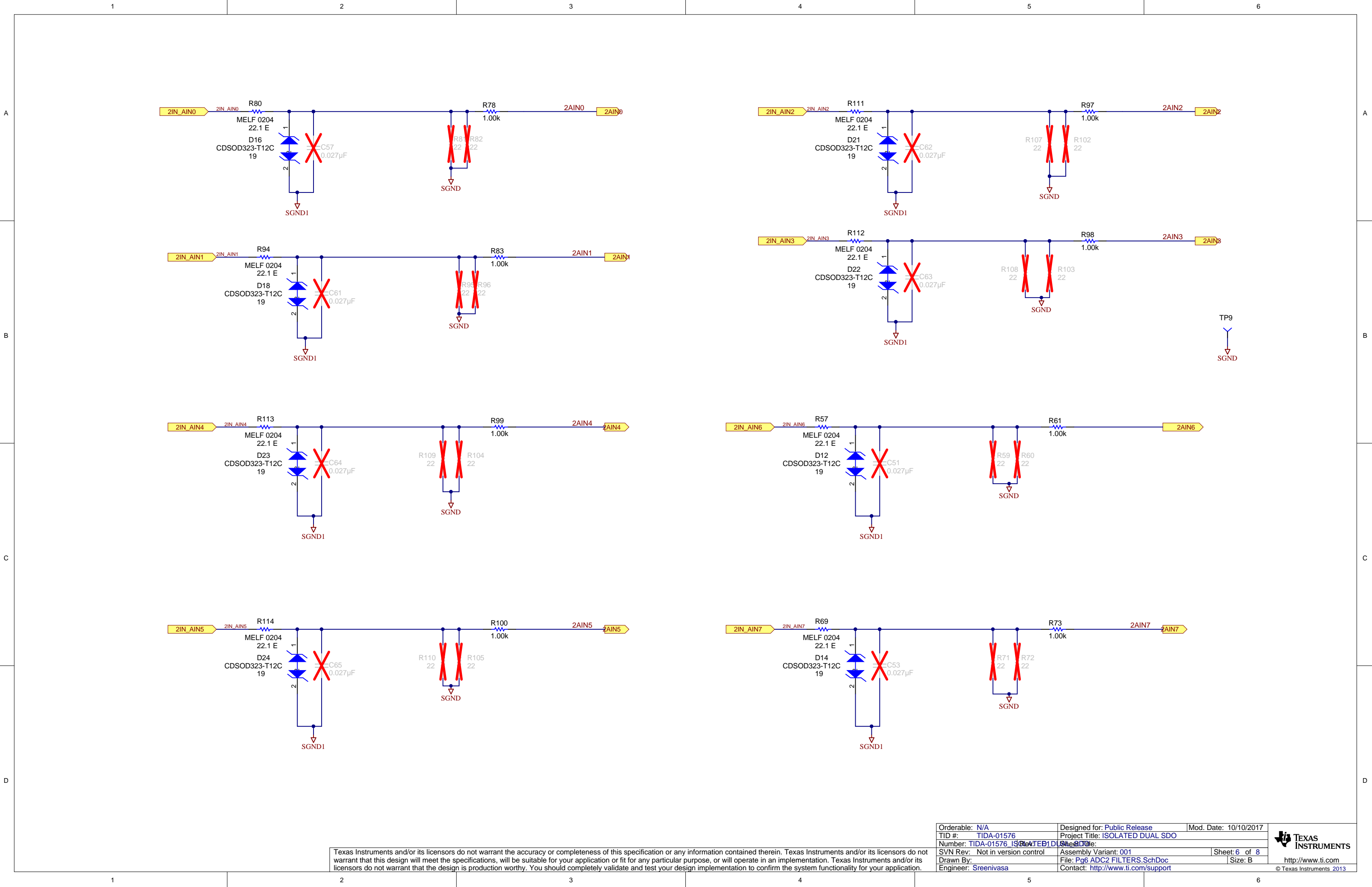
Texas Instruments and/or its licensors do not warrant the accuracy or completeness of this specification or any information contained therein. Texas Instruments and/or its licensors do not warrant that this design will meet the specifications, will be suitable for your application or fit for any particular purpose, or will operate in an implementation. Texas Instruments and/or its licensors do not warrant that the design is production worthy. You should completely validate and test your design implementation to confirm the system functionality for your application.

| | | |
|--------------------------------------|--|----------------------|
| Orderable: N/A | Designed for: Public Release | Mod. Date: 9/21/2017 |
| TID #: TIDA-01576 | Project Title: ISOLATED DUAL SDO | |
| Number: TIDA-01576 ISOLATED DUAL SDO | Assembly Variant: 001 | Sheet: 4 of 8 |
| SVN Rev: Not in version control | File: Pg4 ADC1,ADC2 INPUTS.SchDoc | Size: B |
| Drawn By: | Contact: http://www.ti.com/support | |
| Engineer: Sreenivasa | | |



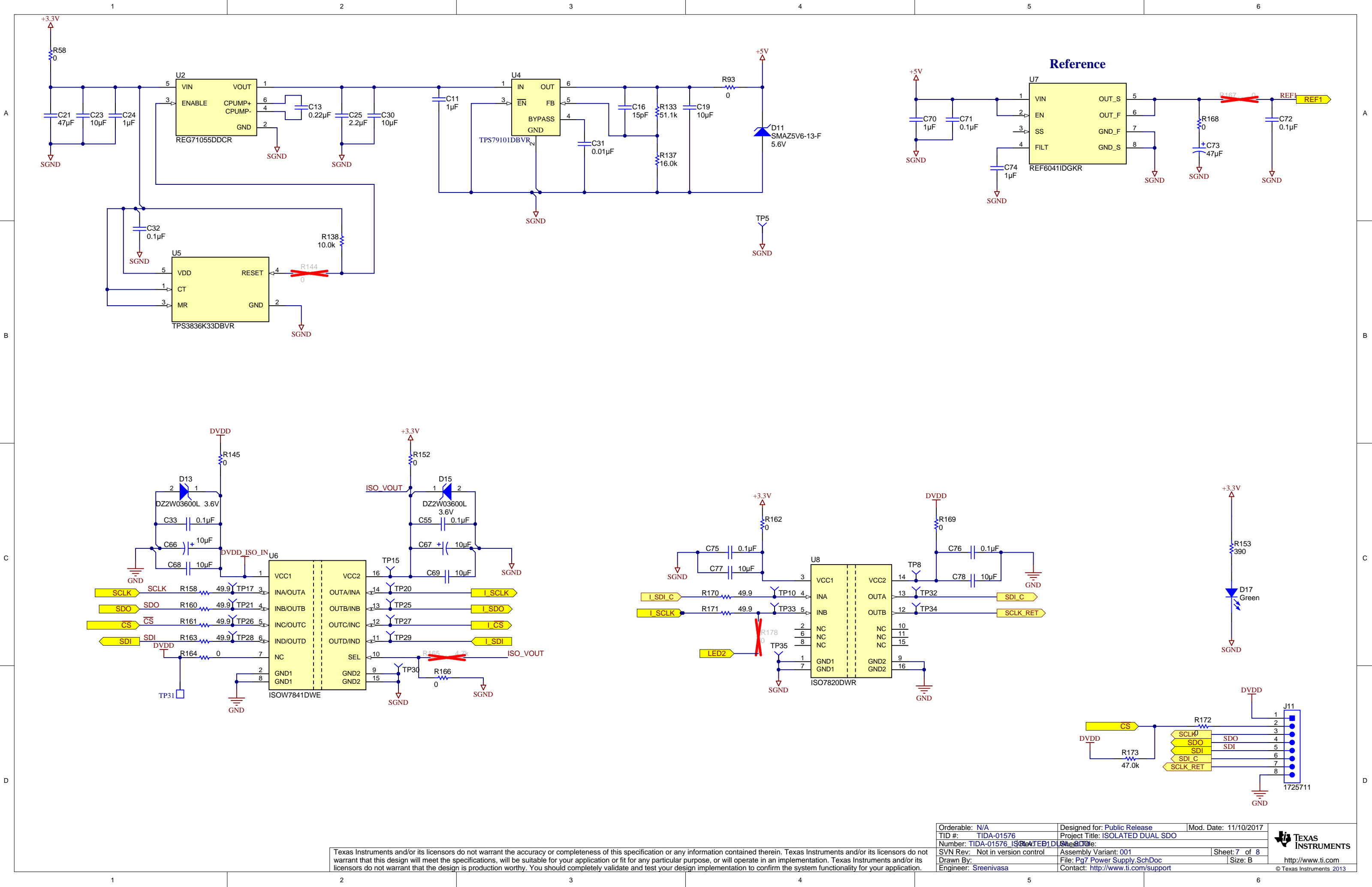
Texas Instruments and/or its licensors do not warrant the accuracy or completeness of this specification or any information contained therein. Texas Instruments and/or its licensors do not warrant that this design will meet the specifications, will be suitable for your application or fit for any particular purpose, or will operate in an implementation. Texas Instruments and/or its licensors do not warrant that the design is production worthy. You should completely validate and test your design implementation to confirm the system functionality for your application.

| | | |
|--------------------------------------|--|-----------------------|
| Orderable: N/A | Designed for: Public Release | Mod. Date: 10/10/2017 |
| TID #: TIDA-01576 | Project Title: ISOLATED DUAL SDO | |
| Number: TIDA-01576 ISOLATED DUAL SDO | Assembly Variant: 001 | Sheet: 5 of 8 |
| SVN Rev: Not in version control | File: Pg5 ADC1 FILTERS.SchDoc | Size: B |
| Drawn By: Sreenivasa | Contact: http://www.ti.com/support | |



Texas Instruments and/or its licensors do not warrant the accuracy or completeness of this specification or any information contained therein. Texas Instruments and/or its licensors do not warrant that this design will meet the specifications, will be suitable for your application or fit for any particular purpose, or will operate in an implementation. Texas Instruments and/or its licensors do not warrant that the design is production worthy. You should completely validate and test your design implementation to confirm the system functionality for your application.

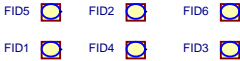
| | | |
|--------------------------------------|--|-----------------------|
| Orderable: N/A | Designed for: Public Release | Mod. Date: 10/10/2017 |
| TID #: TIDA-01576 | Project Title: ISOLATED DUAL SDO | |
| Number: TIDA-01576 ISOLATED DUAL SDO | Assembly Variant: 001 | Sheet: 6 of 8 |
| SVN Rev: Not in version control | File: Pg6 ADC2 FILTERS.SchDoc | Size: B |
| Drawn By: Sreenivasa | Contact: http://www.ti.com/support | |



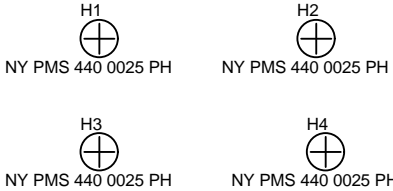
Texas Instruments and/or its licensors do not warrant the accuracy or completeness of this specification or any information contained therein. Texas Instruments and/or its licensors do not warrant that this design will meet the specifications, will be suitable for your application or fit for any particular purpose, or will operate in an implementation. Texas Instruments and/or its licensors do not warrant that the design is production worthy. You should completely validate and test your design implementation to confirm the system functionality for your application.

| | | |
|---------------------------------|----------------------------------|------------------------------------|
| Orderable: N/A | Designed for: Public Release | Mod. Date: 11/10/2017 |
| TID #: TIDA-01576 | Project Title: ISOLATED DUAL SDO | |
| Number: TIDA-01576 ISOW7841DWE | Assembly Variant: 001 | Sheet: 7 of 8 |
| SVN Rev: Not in version control | File: Pg7 Power Supply.SchDoc | Size: B |
| Drawn By: | Engineer: Sreenivasa | Contact: http://www.ti.com/support |

Fiducials



Mounting holes



PTH MTG HOLES

PCB Number: TIDA-01576_ISOLATED PCB

PCB Rev: E1

PCB LOGO
Texas Instruments

LBL1

PCB Label

Size: 0.65" x 0.20 "

ZZ1

Label Assembly Note

This Assembly Note is for PCB labels only

ZZ3

Assembly Note

These assemblies are ESD sensitive, ESD precautions shall be observed.

ZZ2

Assembly Note

These assemblies must be clean and free from flux and all contaminants. Use of no clean flux is not acceptable.

ZZ4

Assembly Note

These assemblies must comply with workmanship standards IPC-A-610 Class 2, unless otherwise specified.

| Variant/Label Table | |
|---------------------|------------|
| Variant | Label Text |
| 001 | ChangeMe! |
| 002 | ChangeMe! |
| | |
| | |
| | |
| | |
| | |

1

2

3

4

5

6

2

3

4

5

6