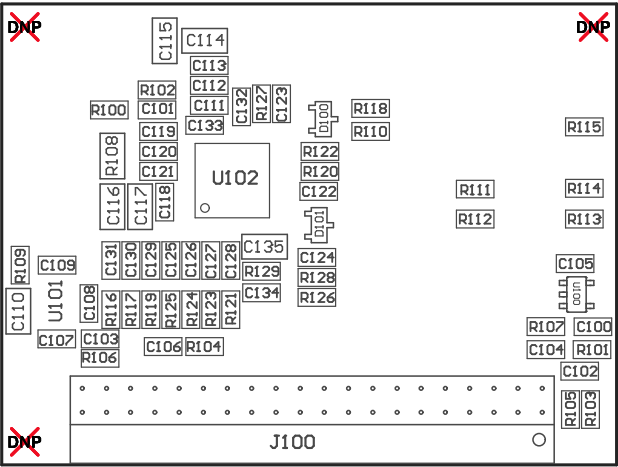
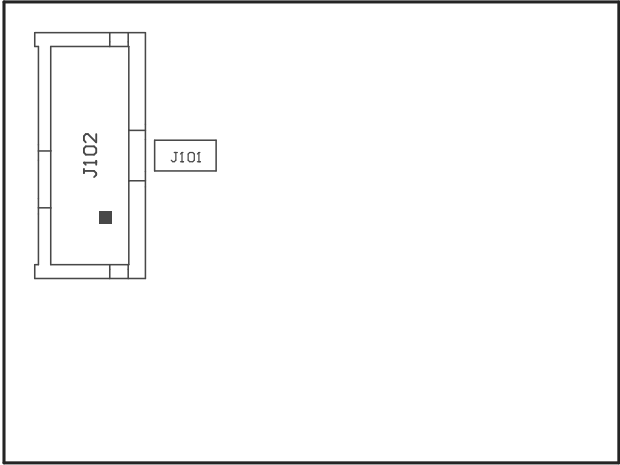


- Z22 ■ These assemblies are ESD sensitive, ESD precautions shall be observed.
- Z23 ■ These assemblies must be clean and free from flux and all contaminants. Use of no clean flux is not acceptable.
- Z24 ■ These assemblies must comply with workmanship standards IPC-A-610 Class 2, unless otherwise specified.



COMPONENTS MARKED 'DNP' SHOULD NOT BE POPULATED.
ASSEMBLY VARIANT: 001

PCB VIEWED FROM TOP SIDE	BOARD #: PMP11432ControlRev A	SUN REV: Not In VersionControl
	TID #: PMP11432	
PLOT NAME = Top Assembly Drawing	GENERATED : 11/16/2015 12:08:39 PM	TEXAS INSTRUMENTS



COMPONENTS MARKED 'DNP' SHOULD NOT BE POPULATED.
ASSEMBLY VARIANT: 001

PCB VIEWED FROM BOTTOM SIDE	BOARD #: PMP11432ControlRev A	SUN REV: Not In VersionControl
	TID #: PMP11432	
PLOT NAME = Bottom Assembly Drawing	GENERATED : 11/16/2015 12:08:40 PM	TEXAS INSTRUMENTS