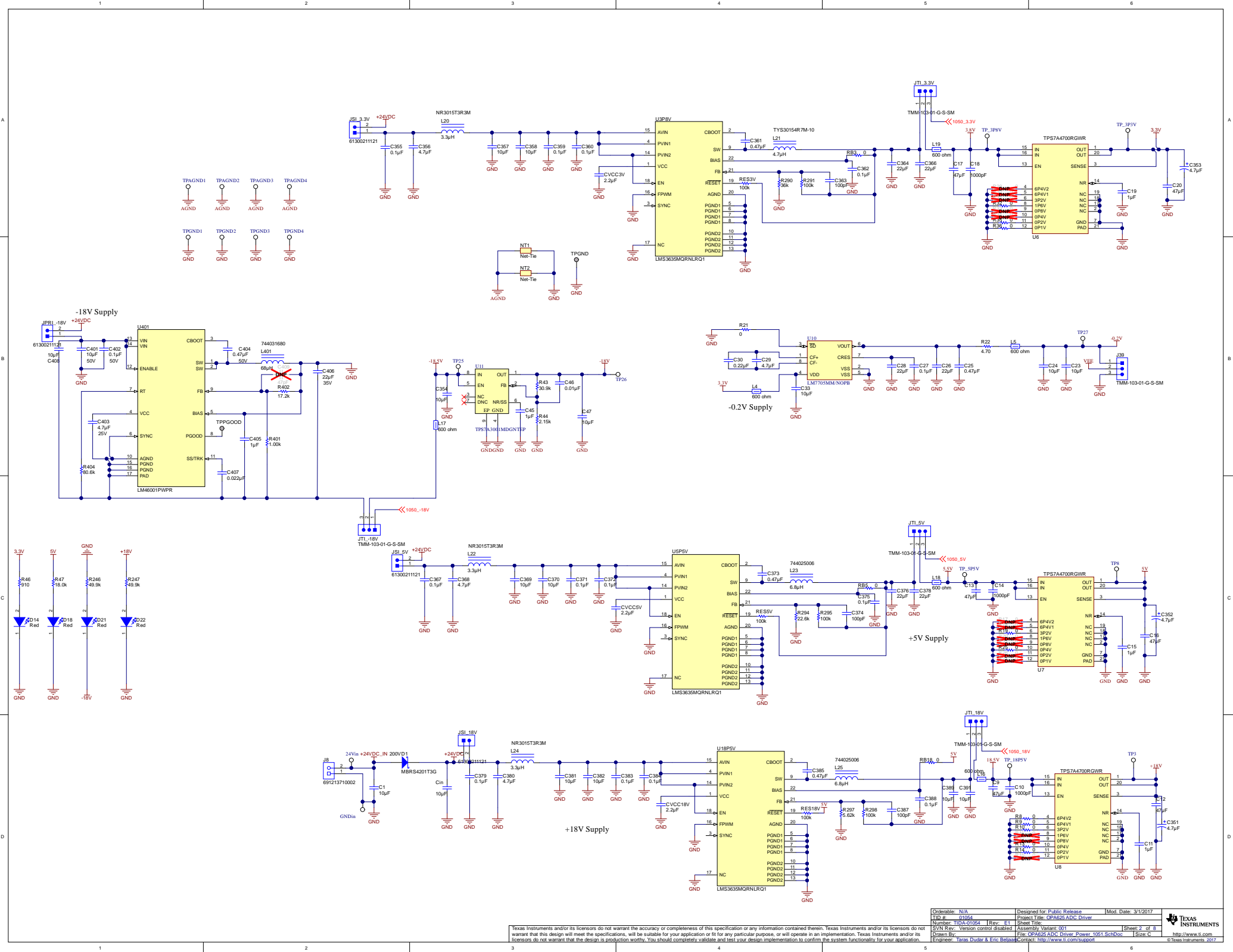
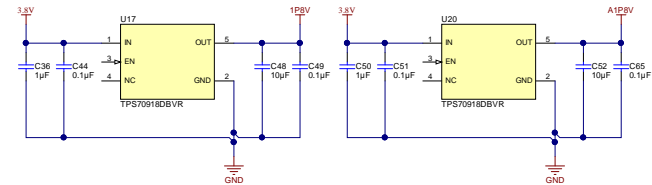
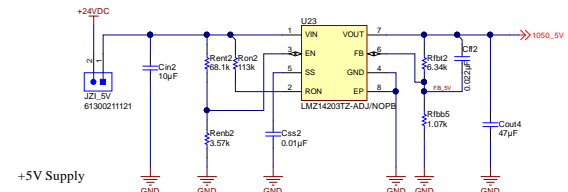
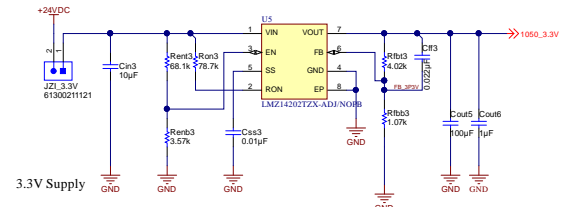
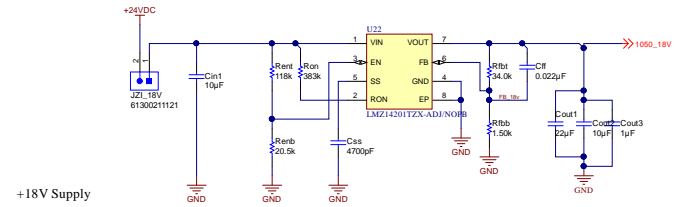
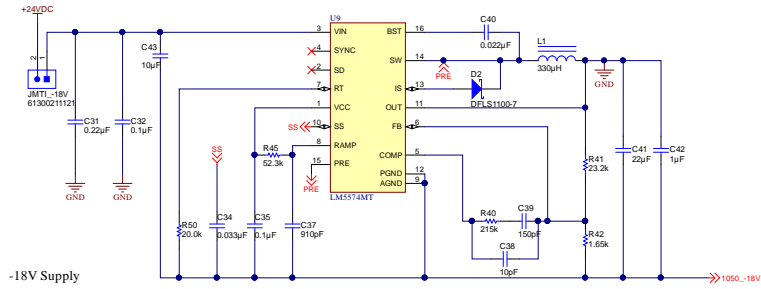


1		2		3		4		5		6	
								Revision History			
Rev		ECN #		Approved Date		Approved by		Notes			
N/A		N/A		N/A		N/A		N/A			
Cannot open file C:\Users\af0226579\Desktop\Documentation Files\TIDA-01051 Block Diagram.png											

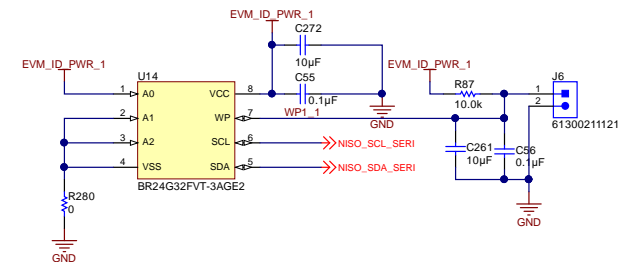
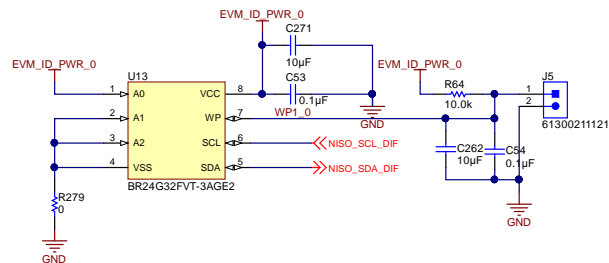
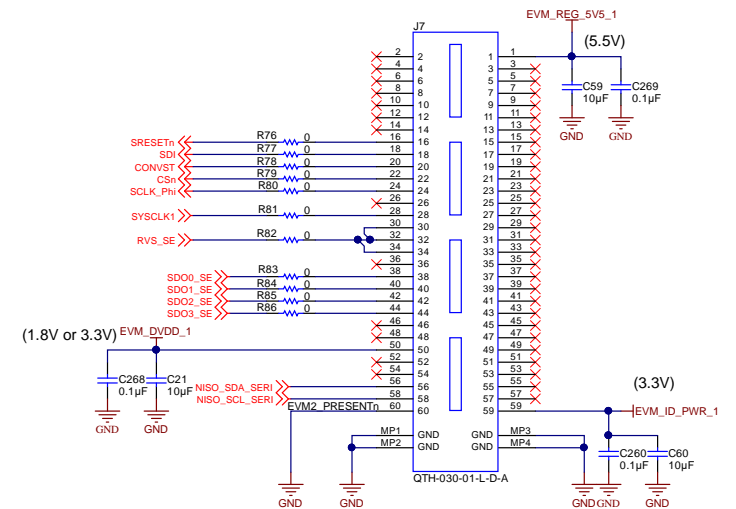
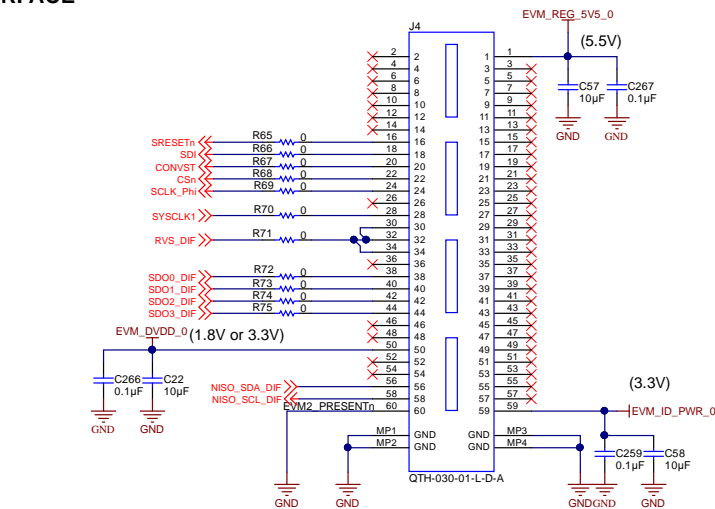
Texas Instruments and/or its licensors do not warrant the accuracy or completeness of this specification or any information contained therein. Texas Instruments and/or its licensors warrant that this design will meet the specifications, will be suitable for your application or fit for any particular purpose, or will operate in an implementation. Texas Instruments and/or its licensors do not warrant that the design is production worthy. You should completely validate and test your design implementation to confirm the system functionality for your application. <http://www.ti.com>

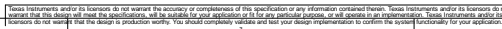






PHI PLATFORM INTERFACE





PROG MASTER CLOCK GENERATION

USB2ANY I2C HEADER

