
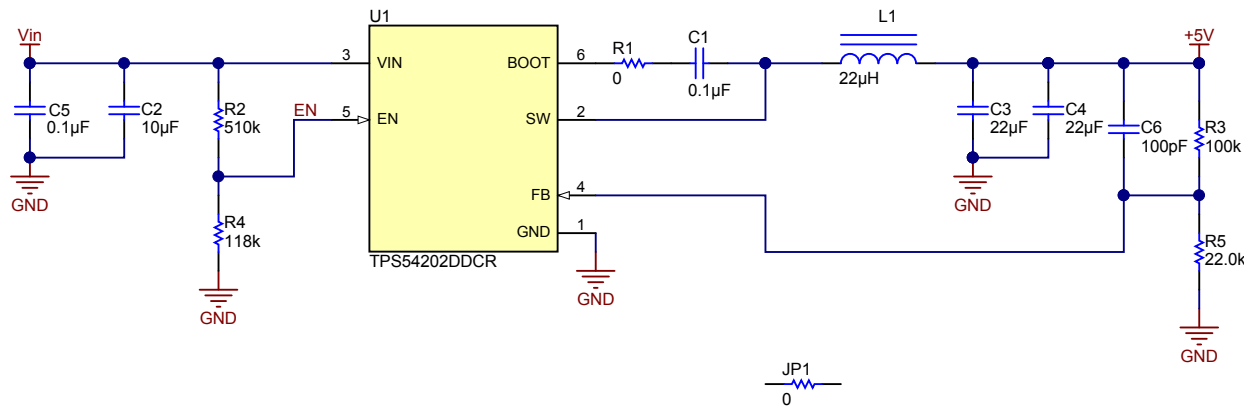
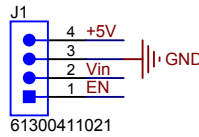


1	2	3	4	5	6												
A	<div>Revision History</div> <table><tr><td>Rev</td><td>ECN #</td><td>Approved Date</td><td>Approved by</td><td>Notes</td></tr><tr><td>N/A</td><td>N/A</td><td>N/A</td><td>N/A</td><td>N/A</td></tr></table>					Rev	ECN #	Approved Date	Approved by	Notes	N/A	N/A	N/A	N/A	N/A		
						Rev	ECN #	Approved Date	Approved by	Notes							
						N/A	N/A	N/A	N/A	N/A							
						B	<div>Place Block Diagram here (if appropriate) or delete this text box. If using a block diagram from another tool, save the picture as a .bmp file. Then, use menu Place Drawing Tools Graphic to insert the .png/.svg/.bmp file on the schematic.</div>										
C	<div>Orderable: N/A</div> <div>TID #: ChangeMe!</div> <div>Number: TIDA-xxxxx Rev: E1</div> <div>SVN Rev: Version control disabled</div> <div>Drawn By: Enter name of project lead</div> <div>Engineer: Enter name of project lead</div> <div>Designed for: Public Release</div> <div>Project Title: Change in menu ProjectProject OptionsParameters</div> <div>Sheet Title: Assembly Variant: 001</div> <div>File: CoverSheet.SchDoc</div> <div>Contact: http://www.ti.com/support</div> <div>Mod. Date: 5/27/2015</div> <div>Sheet: 1 of 3</div> <div>Size: B</div> <div><div>TEXAS INSTRUMENTS</div><div>http://www.ti.com</div><div>© Texas Instruments 2015</div></div>																
												D	<div>1</div> <div>2</div> <div>3</div> <div>4</div> <div>5</div> <div>6</div>				

NOTES:

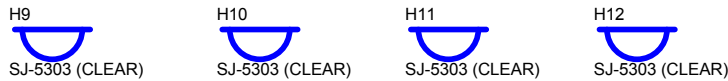
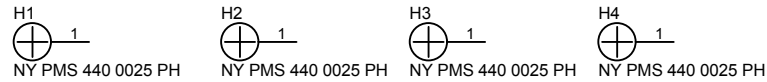
INPUT VOLTAGE: 7-V to 20-VDC, 12-VDC IS RECOMMENDED
PEAK INPUT CURRENT: 1A

OUTPUT VOLTAGE: 5VDC Nominal
OUTPUT CURRENT: 1A Nominal
OCP THRESHOLD: 3A
OTP THRESHOLD: 160 degree



Texas Instruments and/or its licensors do not warrant the accuracy or completeness of this specification or any information contained therein. Texas Instruments and/or its licensors do not warrant that this design will meet the specifications, will be suitable for your application or fit for any particular purpose, or will operate in an implementation. Texas Instruments and/or its licensors do not warrant that the design is production worthy. You should completely validate and test your design implementation to confirm the system functionality for your application.

Orderable: N/A	Designed for: Public Release	Mod. Date: 6/12/2016
TID #: ChangeMe!	Project Title: Change in menu Project Project Options Parameters	
Number: TIDA-xxxxx	Rev: E1	Sheet Title:
SVN Rev: Version control disabled	Assembly Variant: 001	Sheet: 2 of 3
Drawn By:	File: TIDA-00949 RevA01.SchDoc	Size: B
Engineer: Enter name of project lead	Contact: http://www.ti.com/support	



PCB Number: TIDA-xxxxx
PCB Rev: E1

PCB
LOGO
Texas Instruments

PCB
LOGO
Pb-Free Symbol

You should delete the nylon screws/standoffs and/or the bumpons as needed for your design (or substitute other parts from Hardware.IntLib). Bumpons are cheaper, but provide less clearance.

Deleting anything else from this page may result in your EVM submission being rejected (until you add them back).

Update the Label Text in the Label Table as needed for each Assembly Variant.

You can delete this note too.

Label Table	
Variant	Label Text
001	ChangeMe!
002	ChangeMe!

ZZ2

Assembly Note

These assemblies are ESD sensitive, ESD precautions shall be observed.

ZZ3

Assembly Note

These assemblies must be clean and free from flux and all contaminants. Use of no clean flux is not acceptable.

ZZ4

Assembly Note

These assemblies must comply with workmanship standards IPC-A-610 Class 2, unless otherwise specified.

Orderable: N/A	Designed for: Public Release	Mod. Date: 8/4/2015
TID #: ChangeMe!	Project Title: Change in menu Project Project Options Parameters	
Number: TIDA-xxxxx	Rev: E1	Sheet Title:
SVN Rev: Version control disabled	Assembly Variant: 001	Sheet: 3 of 3
Drawn By:	File: TID Hardware.SchDoc	Size: B
Engineer: Enter name of project lead	Contact: http://www.ti.com/support	



<http://www.ti.com>

© Texas Instruments 2015

Texas Instruments and/or its licensors do not warrant the accuracy or completeness of this specification or any information contained therein. Texas Instruments and/or its licensors do not warrant that this design will meet the specifications, will be suitable for your application or fit for any particular purpose, or will operate in an implementation. Texas Instruments and/or its licensors do not warrant that the design is production worthy. You should completely validate and test your design implementation to confirm the system functionality for your application.