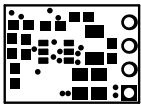
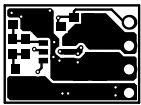


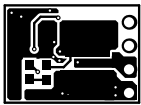
ALL ARTWORK VIEWED FROM TOP SIDE	BOARD #: TIDA-00946	REV: E1	SVN REV: Not In VersionControl
LAYER NAME = Top Overlay	TID #: TIDA-00946		
PLOT NAME = Top Overlay	GENERATED : 6/10/2016 1:19:43 PM		TEXAS INSTRUMENTS



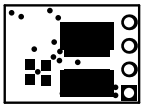
ALL ARTWORK VIEWED FROM TOP SIDE	BOARD #: TIDA-00946	REV: E1	SVN REV: Not In VersionControl
LAYER NAME = Top Solder	TID #: TIDA-00946		
PLOT NAME = Top Solder Mask	GENERATED : 6/10/2016 1:19:43 PM		TEXAS INSTRUMENTS



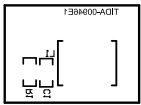
ALL ARTWORK VIEWED FROM TOP SIDE	BOARD #: TIDA-00946	REV: E1	SVN REV: Not In VersionControl
LAYER NAME = Top Layer	TID #: TIDA-00946		
PLOT NAME = Top Layer	GENERATED : 6/10/2016 1:19:44 PM		TEXAS INSTRUMENTS



ALL ARTWORK VIEWED FROM TOP SIDE	BOARD #: TIDA-00946	REV: E1	SVN REV: Not In VersionControl
LAYER NAME = Bottom Layer	TID #: TIDA-00946		
PLOT NAME = Bottom Layer	GENERATED : 6/10/2016 1:19:45 PM		TEXAS INSTRUMENTS

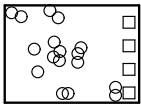


ALL ARTWORK VIEWED FROM TOP SIDE	BOARD #: TIDA-00946	REV: E1	SVN REV: Not In VersionControl
LAYER NAME = Bottom Solder	TID #: TIDA-00946		
PLOT NAME = Bottom Solder Mask	GENERATED : 6/10/2016 1:19:45 PM		TEXAS INSTRUMENTS

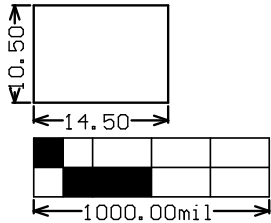


ALL ARTWORK VIEWED FROM TOP SIDE	BOARD #: TIDA-00946	REV: E1	SVN REV: Not In VersionControl
LAYER NAME = Bottom Overlay	TID #: TIDA-00946		
PLOT NAME = Bottom Overlay	GENERATED : 6/10/2016 1:19:46 PM		TEXAS INSTRUMENTS

Symbol	Quantity	Finished Hole Size	Plated	Hole Type	Drill Layer Pair	Hole Tolerance
○	17	10.00mil (0.254mm)	PTH	Round	Top Layer - Bottom Layer	
□	4	43.31mil (1.100mm)	PTH	Round	Top Layer - Bottom Layer	
	21 Total					



ALL ARTWORK VIEWED FROM TOP SIDE	BOARD #: TIDA-00946	REV: E1	SUN REV: Not In VersionControl
LAYER NAME = Drill Drawing	TID #: TIDA-00946		
PLOT NAME = Drill Drawing	GENERATED : 6/10/2016 1:19:47 PM		TEXAS INSTRUMENTS



ALL ARTWORK VIEWED FROM TOP SIDE	BOARD #: TIDA-00946	REV: E1	SUN REV: Not In VersionControl
LAYER NAME = M2 Board Dimensions	TID #: TIDA-00946		
PLOT NAME = Board Dimensions	GENERATED : 6/10/2016 1:19:48 PM		TEXAS INSTRUMENTS