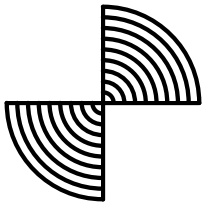
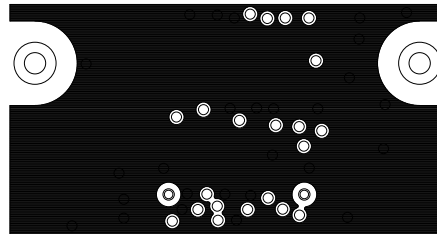
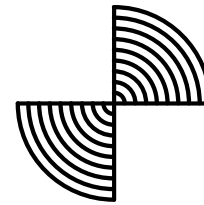
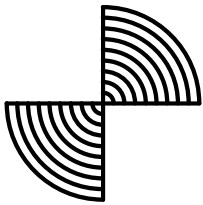
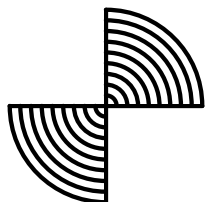
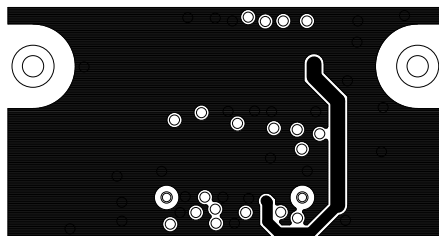
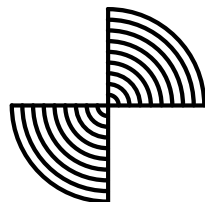
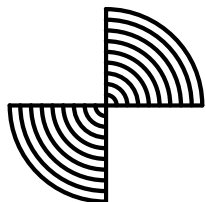


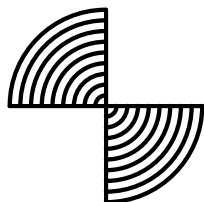
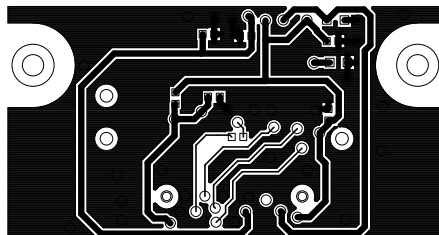
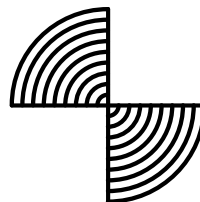
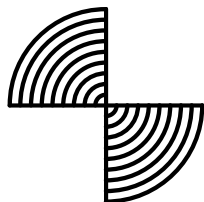
CUSTOMER NAME		TEXAS INSTRUMENTS		
BOARD NAME		DESCRIPTION		
NIRscan Nano DMD Board		LAYER 1 - PRIMARY SIDE		
BOARD NO.	2514018	REV	DATE	PRJ#
		-	29 OCT 2014	TIDL P-23202-02
		SH	1	OF 11



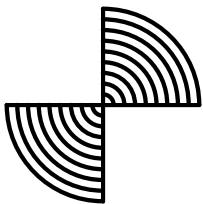
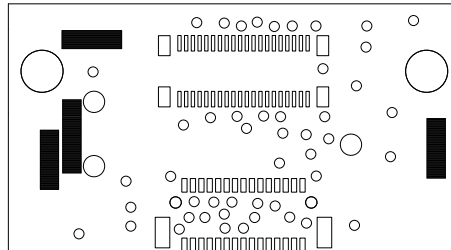
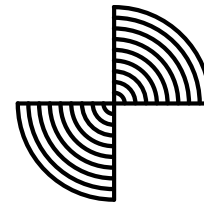
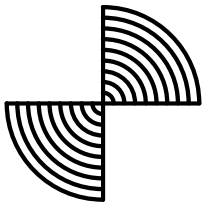
CUSTOMER NAME		TEXAS INSTRUMENTS			
BOARD NAME			DESCRIPTION		
NIRscan Nano DMD Board			LAYER 2 - GND PLANE		
BOARD NO.	REV	DATE	PRJ#	SH	OF
2514018	-	29 OCT 2014	TIDL P-23202-02	2	11



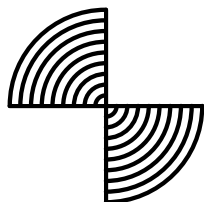
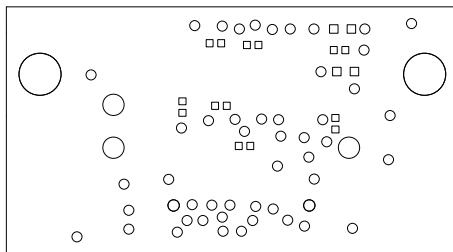
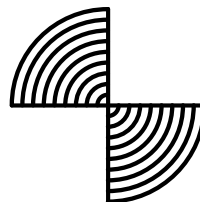
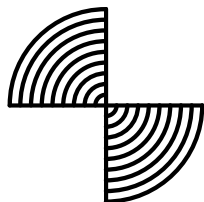
CUSTOMER NAME		TEXAS INSTRUMENTS		
BOARD NAME		NIRscan Nano DMD Board	DESCRIPTION	
			LAYER 3 - GND/PWR PLANE	
BOARD NO.	2514018	REV	DATE	PRJ#
		-	29 OCT 2014	TIDL P-23202-02
			SH	OF
			3	11



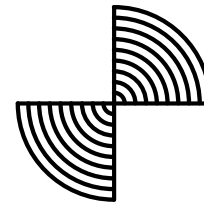
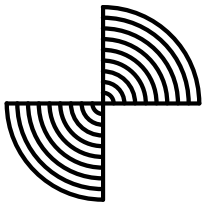
CUSTOMER NAME		TEXAS INSTRUMENTS			
BOARD NAME			DESCRIPTION		
NIRscan Nano DMD Board			LAYER 4 - SECONDARY SIDE		
BOARD NO.	2514018	REV	DATE	PRJ#	SH OF
		-	29 OCT 2014	TIDL P-23202-02	4 11



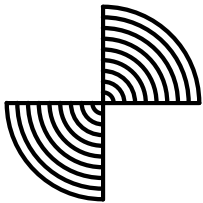
CUSTOMER NAME		TEXAS INSTRUMENTS		
BOARD NAME		DESCRIPTION		
NIRscan Nano DMD Board		SOLDERMASK - PRIMARY SIDE		
BOARD NO.	2514018	REV	DATE	PRJ#
		-	29 OCT 2014	TIDL P-23202-02
		SH	OF	
		5	11	



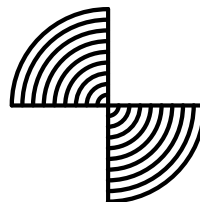
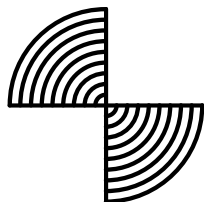
CUSTOMER NAME		TEXAS INSTRUMENTS		
BOARD NAME		NIRscan Nano DMD Board	DESCRIPTION	
			SOLDERMASK - SECONDARY SIDE	
BOARD NO.	2514018	REV	DATE	PRJ#
		-	29 OCT 2014	TIDL P-23202-02
			SH	OF
			6	11



PCB2514017H1
REV[]
J2 [] H20
G1 [] G20
FID []
FID []
J1 2 [] 30
1 [] 29
CCA2514018
REV[]
MSN[]
ESD2514016
REV[]



CUSTOMER NAME		TEXAS INSTRUMENTS		
BOARD NAME		DESCRIPTION		
NIRscan Nano DMD Board		SILKSCREEN - PRIMARY SIDE		
BOARD NO.	REV	DATE	PRJ#	SH OF
2514018	-	29 OCT 2014	TIDL P-23202-02	7 11

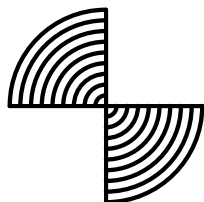


INSTRUMENTS
TEXT
SO-S0S0S-0S
FID FID
IDG9-9JIT

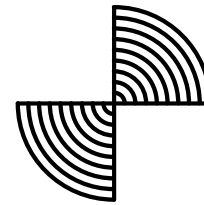
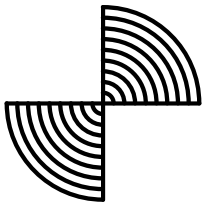


$\begin{array}{c} \square \\ C\theta \\ \square \end{array}$

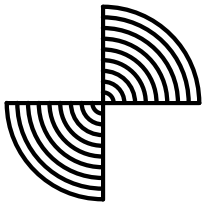
FID CS
 B001q
 M100 DWD
 DFG NIK200



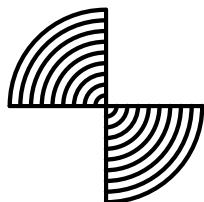
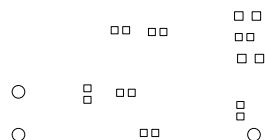
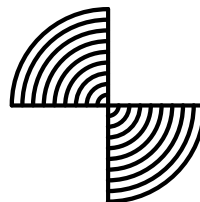
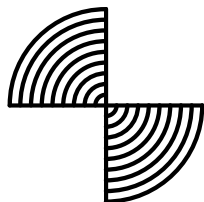
CUSTOMER NAME		TEXAS INSTRUMENTS			
BOARD NAME			DESCRIPTION		
NIRscan Nano DMD Board			SILKSCREEN-SECONDARY SIDE		
BOARD NO.	2514018	REV	DATE	PRJ#	SH OF
		-	29 OCT 2014	TIDL P-23202-02	8 11



□ □□□□□□□□□□□□□□□□ □
○ □ □□□□□□□□□□□□□□□ □
○ □ □□□□□□□□□□ □
□ □□□□□□□□□□ □



CUSTOMER NAME		TEXAS INSTRUMENTS			
BOARD NAME			DESCRIPTION		
NIRscan Nano DMD Board			SOLDERPASTE - PRIMARY SIDE		
BOARD NO.	2514018	REV	DATE	PRJ#	SH OF
		-	29 OCT 2014	TIDL P-23202-02	9 11

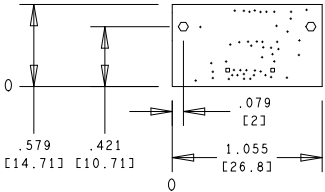


CUSTOMER NAME		TEXAS INSTRUMENTS		
BOARD NAME		NIRscan Nano DMD Board	DESCRIPTION	
			SOLDERPASTE - SECONDARY SIDE	
BOARD NO.	2514018	REV	DATE	PRJ#
		-	29 OCT 2014	TIDL P-23202-02
				SH 10 OF 11

LAYER STACK-UP - ALL DIMENSIONS IN INCHES				
		68ohm SINGLE ENDED IMPEDANCE CONTROL +/- 10%	75ohm SINGLE ENDED IMPEDANCE CONTROL +/- 10%	100ohm DIFFERENTIAL IMPEDANCE CONTROL +/- 10%
LAYER#	COPPER WEIGHT (OZ)			
LAYER 1 - PRIMARY SIDE - SIGNAL	HALF+PLATING	4		4.7/5.3
LAYER 2 - GND PLANE	1			
LAYER 3 - GND/PWR PLANE	1			
LAYER 4 - SECONDARY SIDE - SIGNAL/ PLANE	HALF+PLATING	4		

- FAB NOTES:
- ALL DIMENSIONS ARE IN INCHES, UNLESS OTHERWISE NOTED. ALL BOARD OUTLINE DIMENSION TOLERANCES ARE +/- 0.010".
 - THE PWB SHALL BE FABRICATED TO IPC-6011 AND IPC-6012, CLASS 2 AND WORKMANSHIP SHALL CONFORM TO IPC-A-600, CLASS 2. CURRENT REVISIONS.
 - BOARD MATERIAL SHALL BE 180 Tg/340 Td ISOLA FR-370HR OR EQUIVALENT, RoHS COMPLIANT AND LEAD FREE ASSEMBLY CAPABLE. BOARD MATERIAL SHALL MEET OR EXCEED IPC-4101B. COLOR: NATURAL.
 - BOARD MATERIAL & CONSTRUCTION TO BE U.L. APPROVED AND MARKED ON THE FINISHED BOARD. MATERIAL SHALL MEET A MINIMUM OF UL796 AND 94V-0 FLAMMABILITY RATING AND BE MARKED IN COPPER ON THE TOP SIDE OF THE BOARD IN INDICATED AREA.
 - MINIMUM COPPER WALL THICKNESS OF PLATED-THRU HOLES TO BE .001 INCH, WITH A MINIMUM ANNULAR RING OF .002 INCH.
 - OVERALL BOARD THICKNESS TO BE .062 +/- 10% AND APPLIES AFTER ALL LAMINATION AND PLATING PROCESSES, MEASURED FROM COPPER TO COPPER.
 - MAX. WARP & TWIST TO BE .0075 INCHES PER INCH.
 - BOARD MUST BE ELECTRICALLY TESTED USING SUPPLIED IPC-D-356 NETLIST.

- PROCESS NOTES:
- PLATE ALL EXPOSED AREAS WITH ELECTROLESS IMMERSION GOLD, NICKEL 100 MICROINCHES THK, GOLD 2-6 MICROINCHES THK MIN.
 - APPLY LDI SOLDERMASK OVER BARE COPPER (SMOBC). COLOR: GREEN. SOLDERMASK SHALL CONFORM TO IPC-SM-840, CLASS H. CURRENT REV.
 - SOLDERMASK ARTWORK HAS ZERO (0) OVERSIZED PADS. FABRICATION VENDOR IS ALLOWED TO ADJUST THE COMPONENT SOLDERMASK PADS TO MEET THEIR TOOLING REQUIREMENTS WHILE MAINTAINING WEBBING BETWEEN ADJACENT PADS.
 - APPLY LPI SILKSCREEN OR EQUIVALENT PER THE ARTWORK. COLOR: WHITE.



PRIMARY SIDE VIEW

DRILL CHART: TOP to BOTTOM				
ALL UNITS ARE IN MILS				
FIGURE	SIZE	TOLERANCE	PLATED	QTY
•	12.0	+3.0/-12.0	PLATED	48
◻	27.0	+3.0/-3.0	NON-PLATED	2
○	98.4	+3.0/-3.0	NON-PLATED	2

CUSTOMER NAME		TEXAS INSTRUMENTS			
BOARD NAME			DESCRIPTION		
NIRscan Nano DMD Board			FAB DRAWING		
BOARD NO.	2514018	REV	-	DATE	29 OCT 2014
PRJ#	TIDLDP-23202-02	SH	11	OF	11