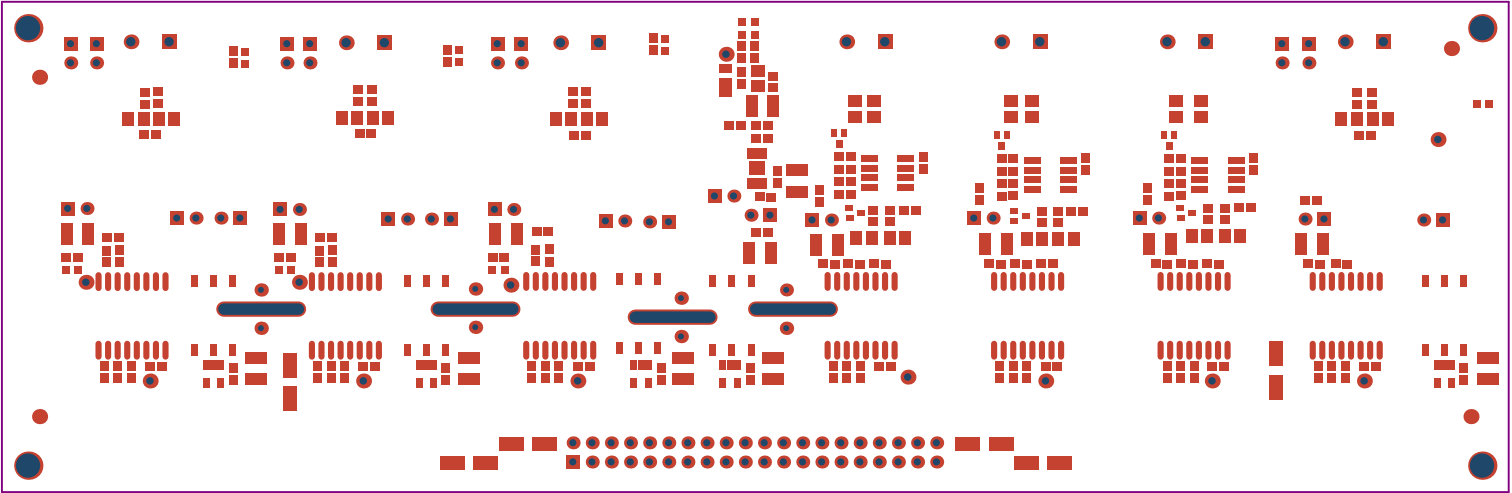
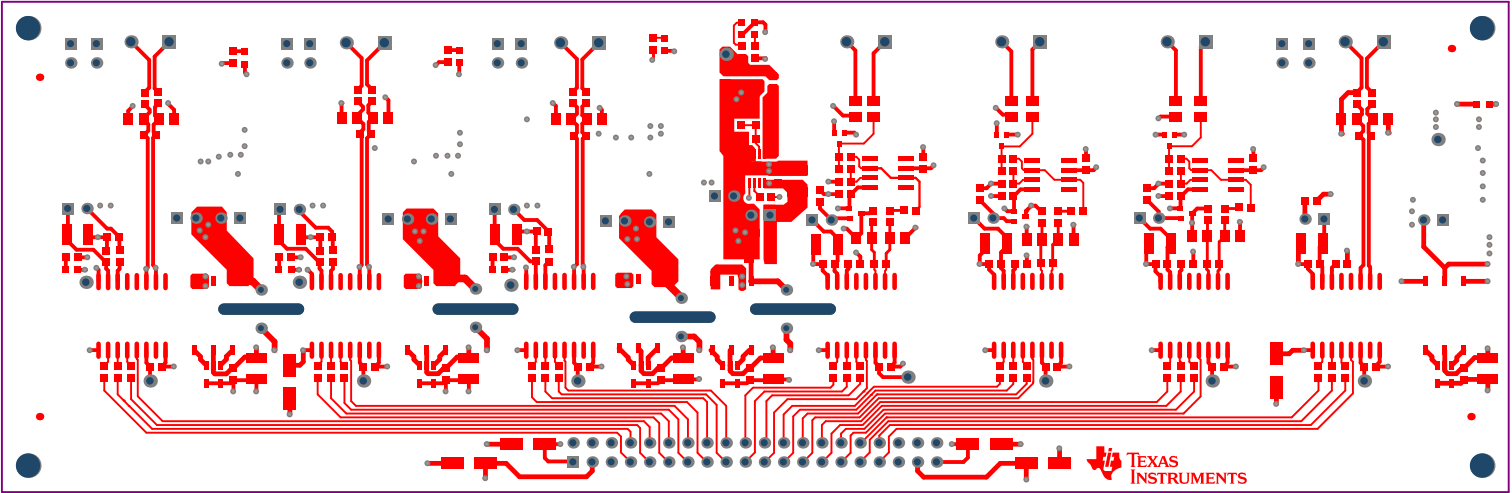


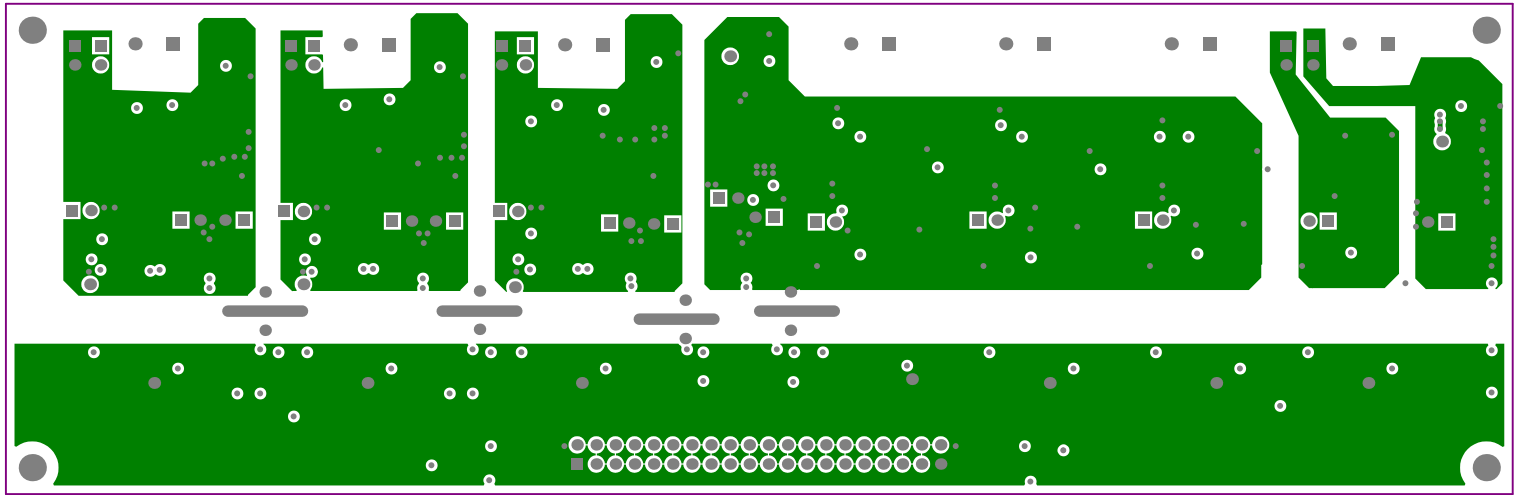
ALL ARTWORK VIEWED FROM TOP SIDE	BOARD #:TIDA-00080	REV: E1	SUN REV: Not In VersionControl
LAYER NAME = Top Overlay			
PLOT NAME = Top Overlay	GENERATED : 7/3/2014 9:07:27 AM	TEXAS INSTRUMENTS	



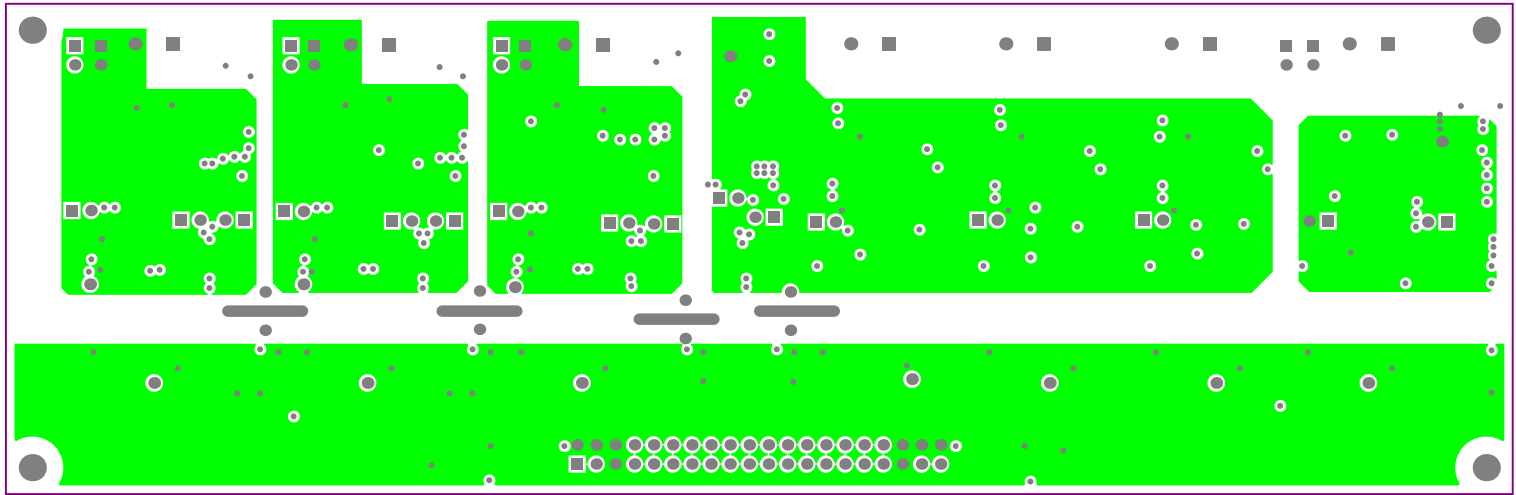
ALL ARTWORK VIEWED FROM TOP SIDE	BOARD #:TIDA-00080	REV: E1	SUN REV: Not In VersionControl
LAYER NAME = Top Solder			
PLOT NAME = Top Solder Mask	GENERATED : 7/3/2014 9:07:28 AM	TEXAS INSTRUMENTS	



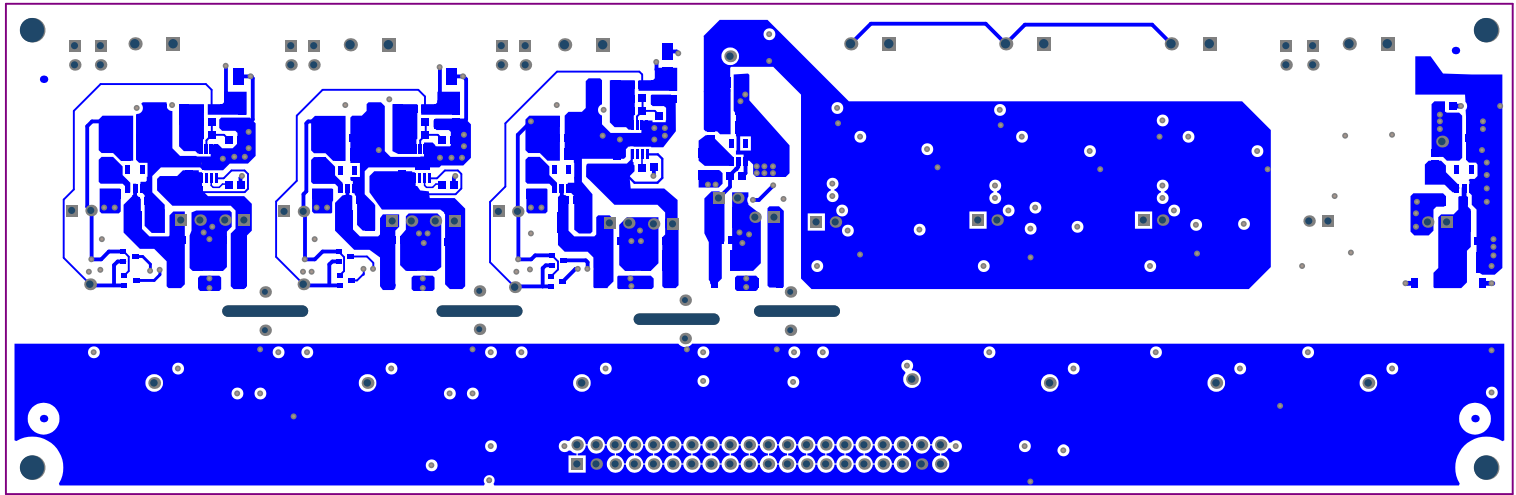
ALL ARTWORK VIEWED FROM TOP SIDE	BOARD #:TIDA-00080	REV: E1	SUN REV: Not In VersionControl
LAYER NAME = Top Layer			
PLOT NAME = Top Layer	GENERATED : 7/3/2014	9:07:28 AM	TEXAS INSTRUMENTS



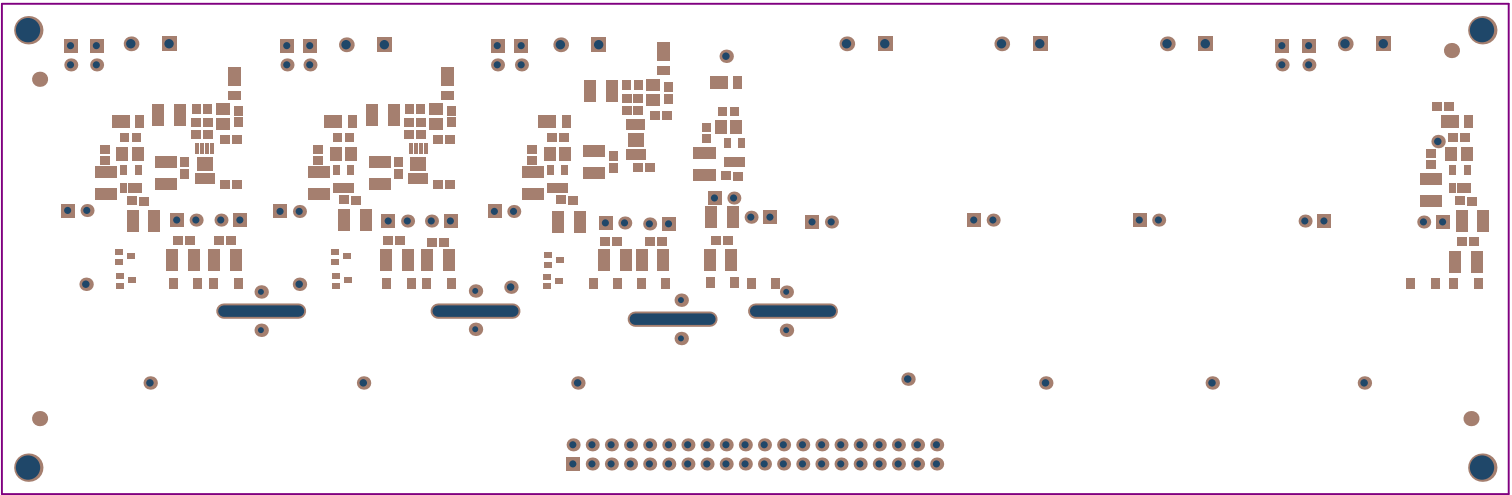
ALL ARTWORK VIEWED FROM TOP SIDE	BOARD #:TIDA-00080	REV: E1	SUN REV: Not In VersionControl
LAYER NAME = MidLayer1			
PLOT NAME = Mid Layer1	GENERATED : 7/3/2014 9:07:28 AM	TEXAS INSTRUMENTS	



ALL ARTWORK VIEWED FROM TOP SIDE	BOARD #:TIDA-00080	REV: E1	SUN REV: Not In VersionControl
LAYER NAME = MidLayer2			
PLOT NAME = Mid Layer2	GENERATED : 7/3/2014	9:07:28 AM	TEXAS INSTRUMENTS

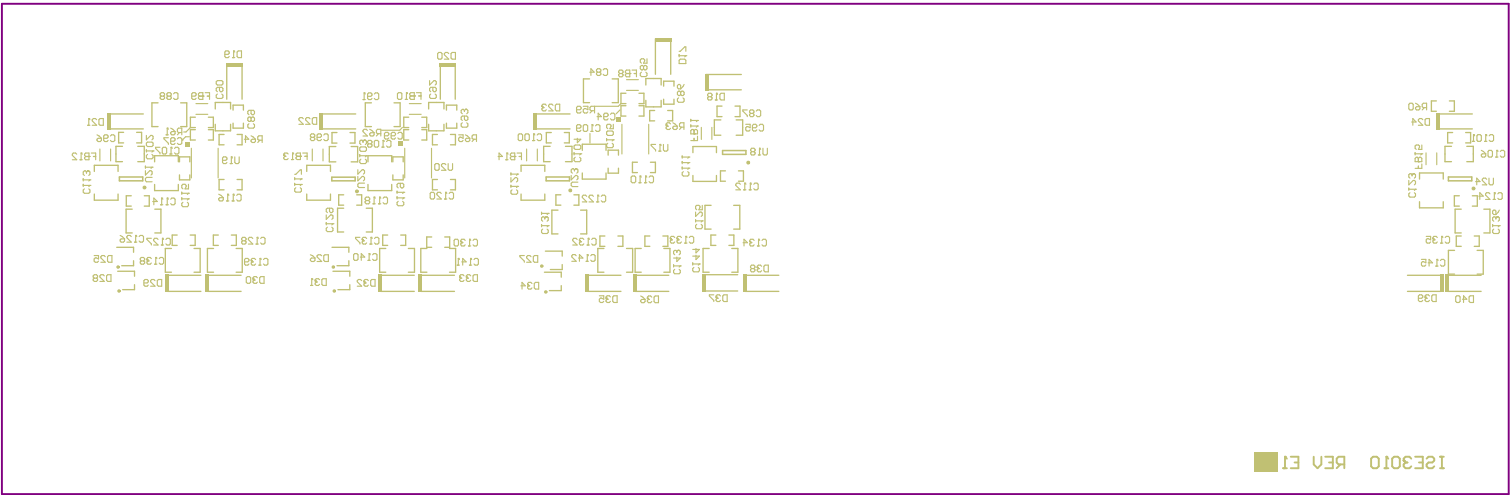


ALL ARTWORK VIEWED FROM TOP SIDE	BOARD #:TIDA-00080	REV: E1	SUN REV: Not In VersionControl
LAYER NAME = Bottom Layer			
PLOT NAME = Bottom Layer	GENERATED : 7/3/2014	9:07:28 AM	TEXAS INSTRUMENTS



ALL ARTWORK VIEWED FROM TOP SIDE	BOARD #:TIDA-00080	REV: E1	SUN REV: Not In VersionControl
LAYER NAME = Bottom Solder			
PLOT NAME = Bottom Solder Mask	GENERATED : 7/3/2014	9:07:28 AM	TEXAS INSTRUMENTS

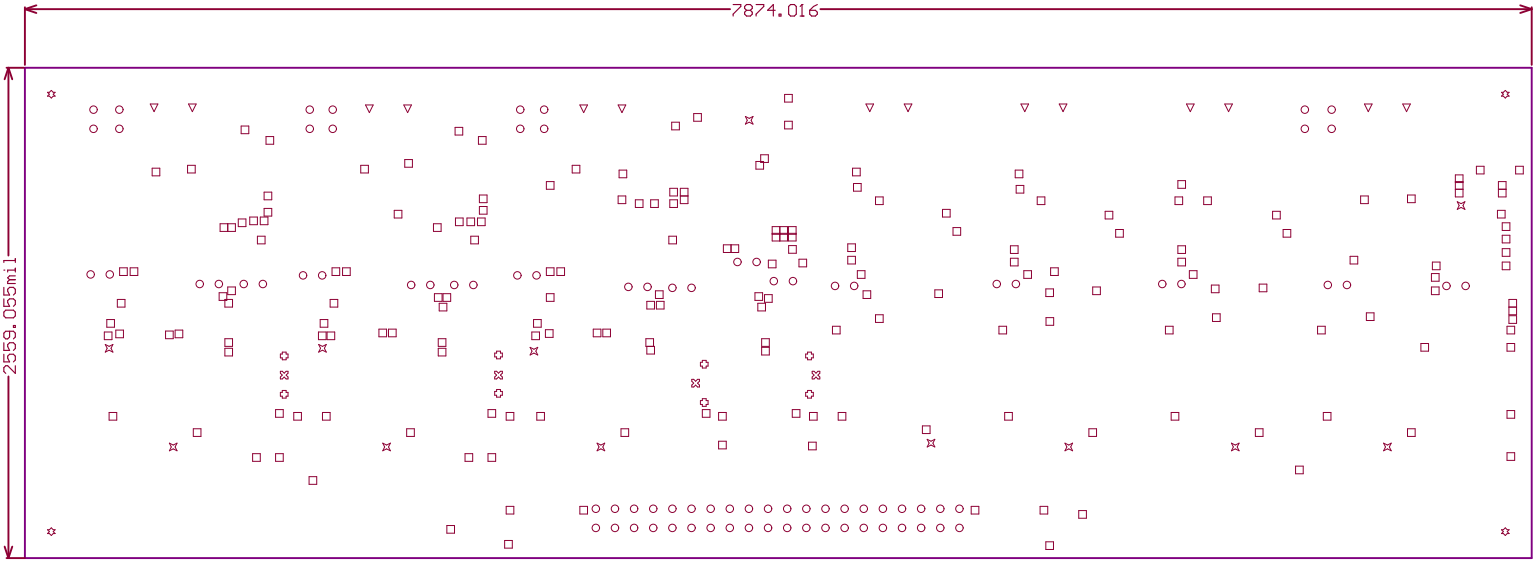
ALL ARTWORK VIEWED FROM TOP SIDE	BOARD #:TIDA-00080	REV: E1	SUN REV: Not In VersionControl
LAYER NAME = Bottom Overlay			
PLOT NAME = Bottom Overlay	GENERATED : 7/3/2014	9:07:28 AM	TEXAS INSTRUMENTS



Symbol	Hit Count	Tool Size	Physical Length	Rout Path Length	Plated	Hole Type
□	199	16mil (0.406mm)			PTH	Round
⊗	8	32mil (0.813mm)			PTH	Round
○	88	38mil (0.965mm)			PTH	Round
⌘	12	40mil (1.016mm)			PTH	Round
▽	14	49.213mil (1.25mm)			PTH	Round
☆	4	128mil (3.251mm)			NPTH	Round
⊗	4	60mil (1.524mm)	450mil (11.43mm)	390mil (9.906mm)	NPTH	Slot
	329 Total					

Slot definitions : Rout Path Length = Calculated from tool start centre position to tool end centre position.
Physical Length = Rout Path Length + Tool Size = Slot length as defined in the PCB layout

Drill Table



ALL ARTWORK VIEWED FROM TOP SIDE	BOARD #:TIDA-00080	REV: E1	SUN REV: Not In VersionControl
LAYER NAME = Drill Drawing			
PLOT NAME = Drill Drawing	GENERATED : 7/3/2014 9:07:28 AM	TEXAS INSTRUMENTS	