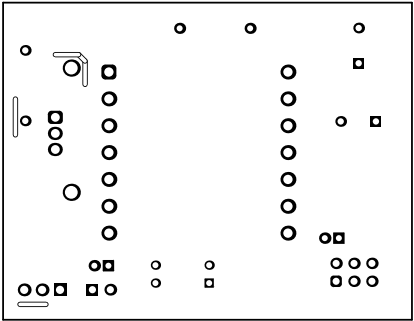
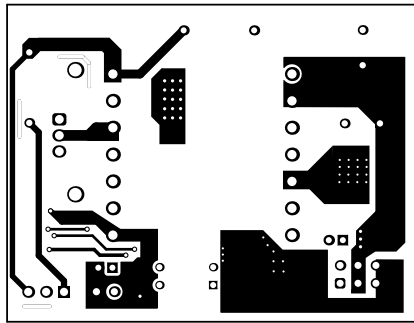


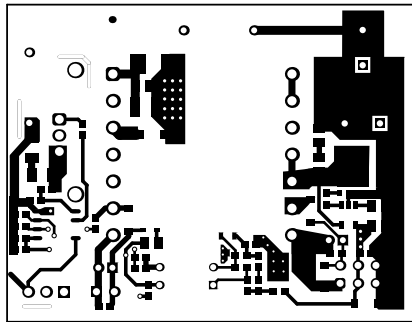
ALL ARTWORK VIEWED FROM TOP SIDE	BOARD #: XXX###	REV: E1	SUN REV: Not In VersionControl
LAYER NAME = Top Overlay	TID #: N/A		
PLOT NAME = Top Overlay	GENERATED : 8/22/2021 12:10:21 AM		TEXAS INSTRUMENTS



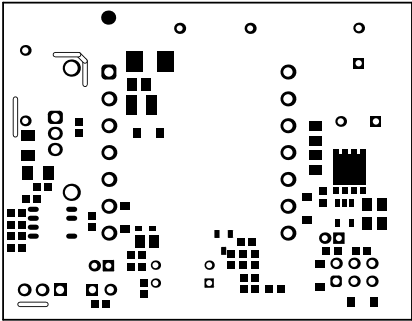
ALL ARTWORK VIEWED FROM TOP SIDE	BOARD #: XXX###	REV: E1	SUN REV: Not In VersionControl
LAYER NAME = Top Solder	TID #: N/A		
PLOT NAME = Top Solder Mask	GENERATED : 8/22/2021 12:10:26 AM	TEXAS INSTRUMENTS	



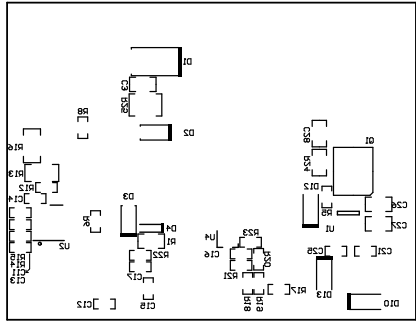
ALL ARTWORK VIEWED FROM TOP SIDE	BOARD #: XXX###	REV: E1	SUN REV: Not In VersionControl
LAYER NAME = Top Layer	TID #: N/A		
PLOT NAME = Top Layer	GENERATED : 8/22/2021 12:10:30 AM	TEXAS INSTRUMENTS	



ALL ARTWORK VIEWED FROM TOP SIDE	BOARD #: XXX####	REV: E1	SUN REV: Not In VersionControl
LAYER NAME = Bottom Layer	TID #: N/A		
PLOT NAME = Bottom Layer	GENERATED : 8/22/2021 12:10:35 AM	TEXAS INSTRUMENTS	



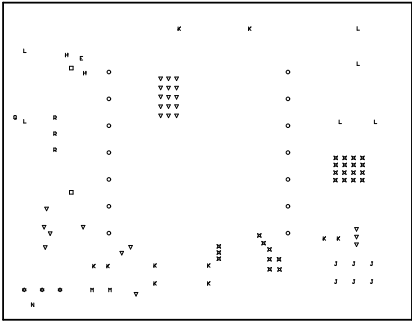
ALL ARTWORK VIEWED FROM TOP SIDE	BOARD #: XXX###	REV: E1	SUN REV: Not In VersionControl
LAYER NAME = Bottom Solder	TID #: N/A		
PLOT NAME = Bottom Solder Mask	GENERATED : 8/22/2021 12:10:38 AM	TEXAS INSTRUMENTS	



ALL ARTWORK VIEWED FROM TOP SIDE	BOARD #: XXX###	REV: E1	SUN REV: Not In VersionControl
LAYER NAME = Bottom Overlay	TID #: N/A		
PLOT NAME = Bottom Overlay	GENERATED : 8/22/2021 12:10:42 AM	TEXAS INSTRUMENTS	

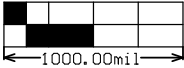
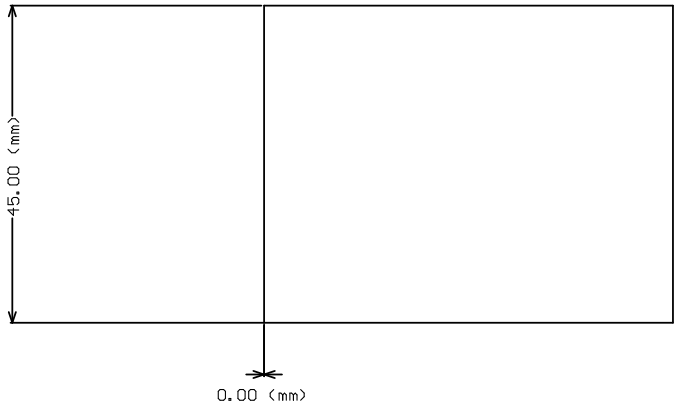
Symbol	Hit Count	Finished Hole Size	Plated	Hole Type	Physical Length	Rout Path Length
⌘	26	12.00mil (0.30480mm)	PTH	Round	-	-
▽	26	18.00mil (0.45720mm)	PTH	Round	-	-
E	1	20.00mil (0.50800mm)	NPTH	Slot	70.00mil (1.77800mm)	50.00mil (1.27000mm)
H	2	20.00mil (0.50800mm)	NPTH	Slot	150.00mil (3.81000mm)	130.00mil (3.30200mm)
N	1	20.00mil (0.50800mm)	NPTH	Slot	165.00mil (4.19100mm)	145.00mil (3.68300mm)
Q	1	20.00mil (0.50800mm)	NPTH	Slot	220.00mil (5.58800mm)	200.00mil (5.08000mm)
K	10	33.47mil (0.85001mm)	PTH	Round	-	-
L	6	35.43mil (0.90000mm)	PTH	Round	-	-
J	6	39.37mil (1.00000mm)	PTH	Round	-	-
M	2	40.00mil (1.01600mm)	PTH	Round	-	-
☆	3	45.67mil (1.15999mm)	PTH	Round	-	-
R	3	49.21mil (1.25001mm)	PTH	Round	-	-
O	14	51.97mil (1.31999mm)	PTH	Round	-	-
□	2	71.42mil (1.81399mm)	PTH	Round	-	-
103 Total						

Slot definitions : Rout Path Length = Calculated from tool start centre position to tool end centre position.
Physical Length = Rout Path Length + Tool Size = Slot length as defined in the PCB layout



DRILL TABLE
FOR 7.874MIL DRILL +0/-7.874MIL
FOR 12MIL DRILL +0/-12MIL
FOR PTH +3/-3MIL
FOR NPTH +2/-2MIL
Vias tented in both sides.
Copper thickness is 2oz.
This is not impedance controlled board.

ALL ARTWORK VIEWED FROM TOP SIDE	BOARD #: XXX###	REV: E1	SUN REV: Not In VersionControl
LAYER NAME = Drill Drawing	TID #: N/A		
PLOT NAME = Drill Drawing	GENERATED : 8/22/2021 12:10:47 AM	TEXAS INSTRUMENTS	



ALL ARTWORK VIEWED FROM TOP SIDE	BOARD #: XXX###	REV: E1	SUN REV: Not In VersionControl
LAYER NAME =	TID #: N/A		
PLOT NAME = Board Dimensions	GENERATED : 8/22/2021 12:10:54 AM	TEXAS INSTRUMENTS	