

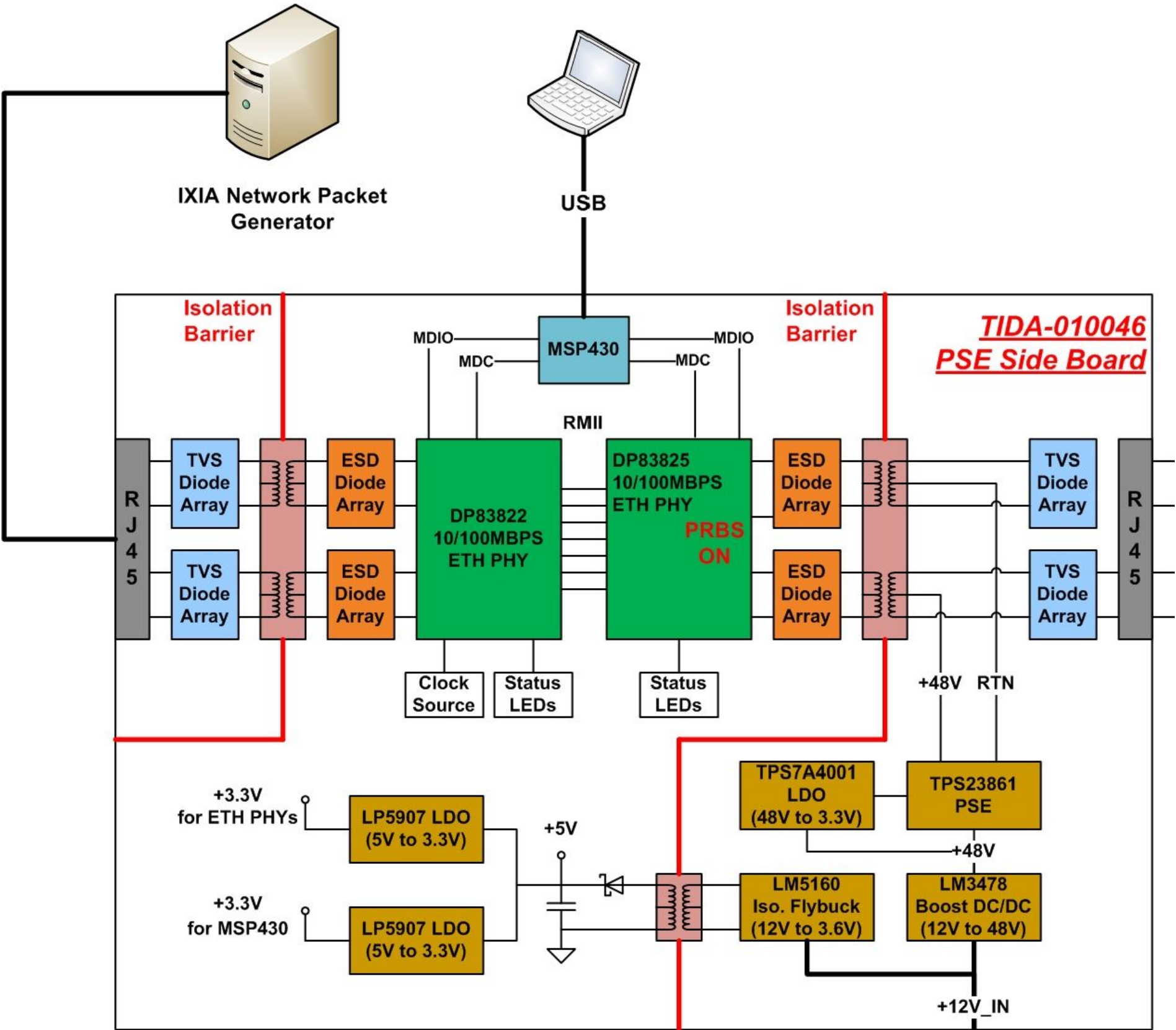
Revision History				
Rev	ECN #	Approved Date	Approved by	Notes
N/A	N/A	N/A	N/A	N/A

A

B

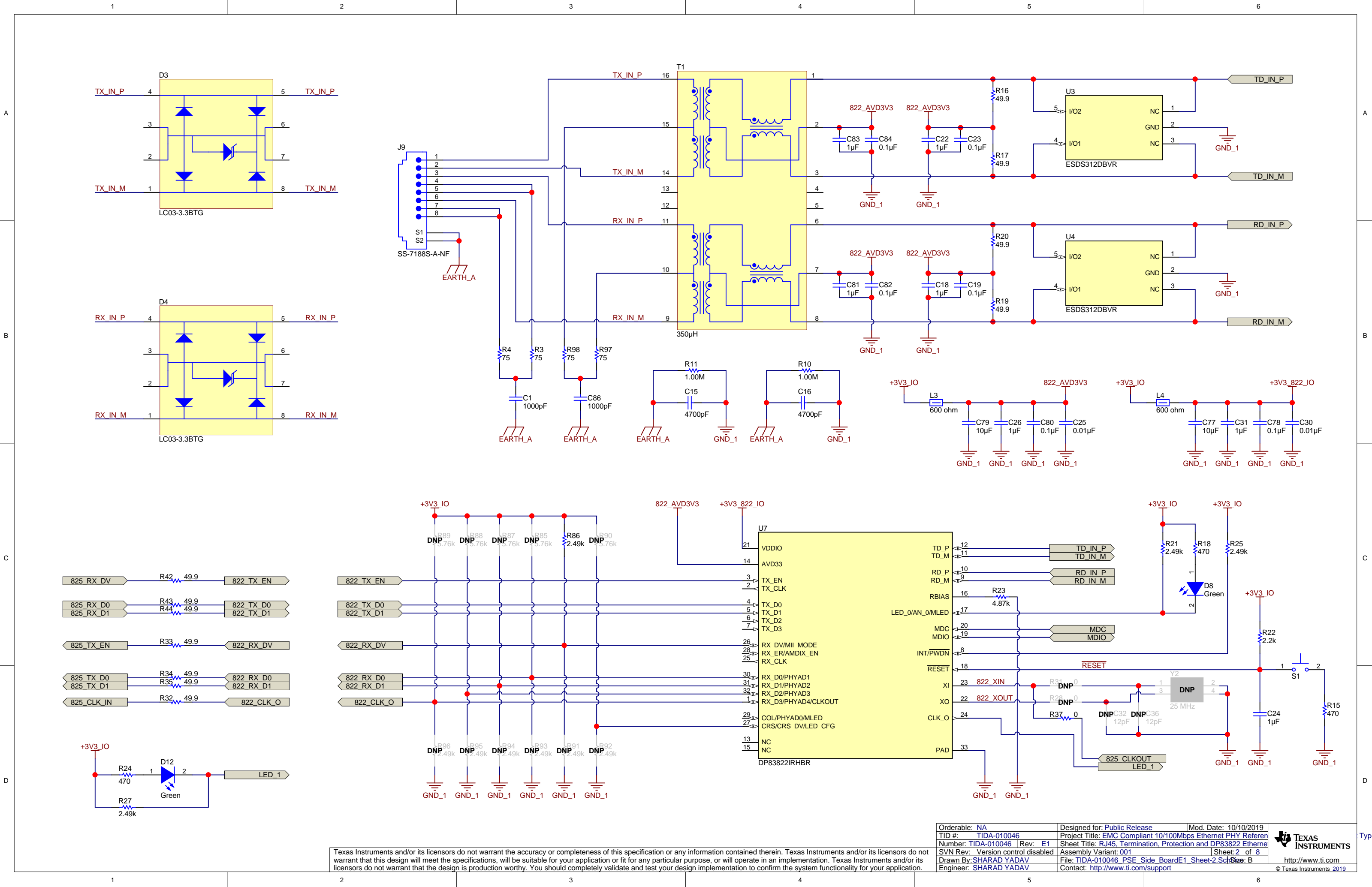
C

D



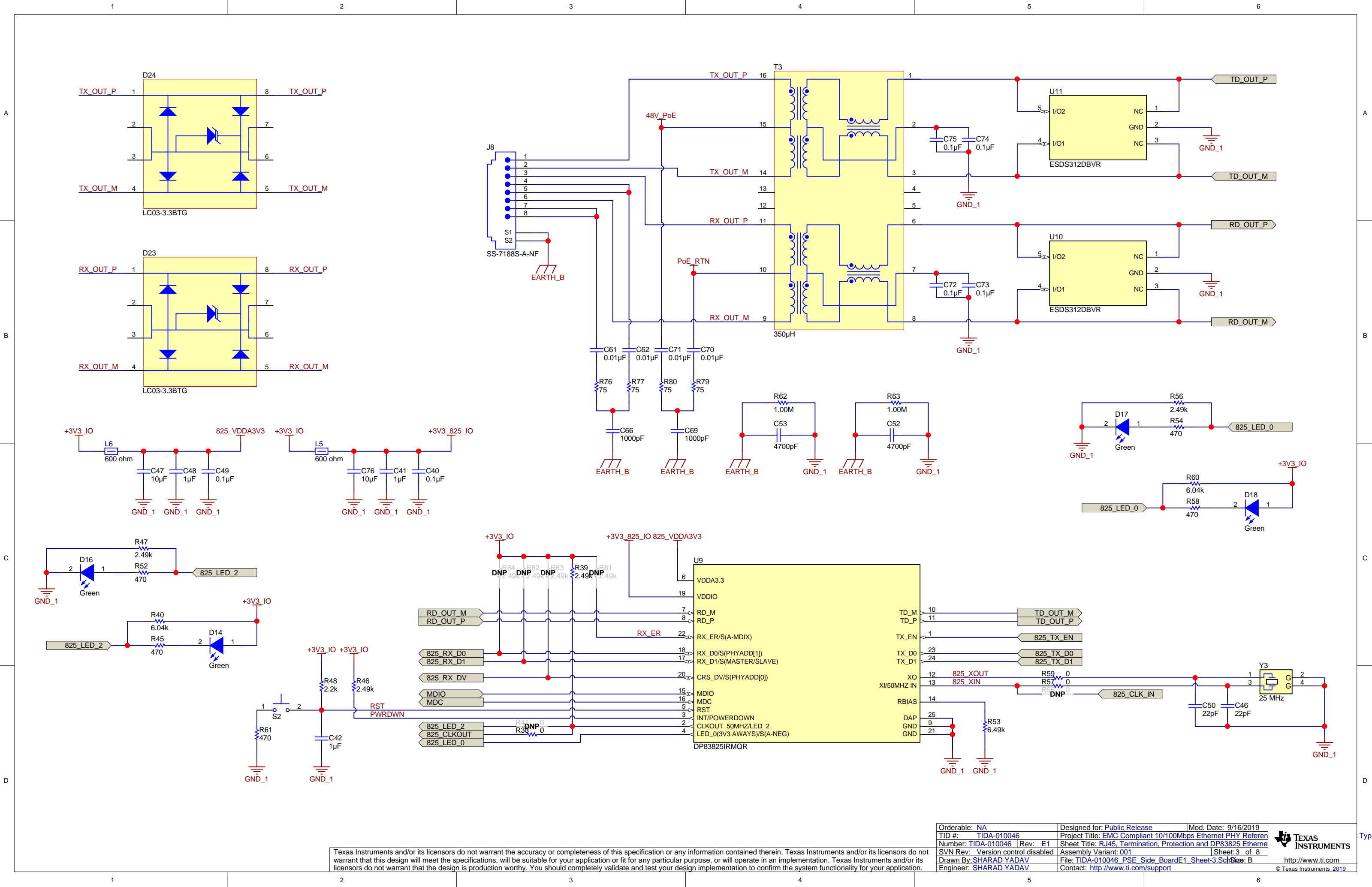
Texas Instruments and/or its licensors do not warrant the accuracy or completeness of this specification or any information contained therein. Texas Instruments and/or its licensors do not warrant that this design will meet the specifications, will be suitable for your application or fit for any particular purpose, or will operate in an implementation. Texas Instruments and/or its licensors do not warrant that the design is production worthy. You should completely validate and test your design implementation to confirm the system functionality for your application.

Orderable: NA	Designed for: Public Release	Mod. Date: 9/16/2019
TID #: TIDA-010046	Project Title: EMC Compliant 10/100Mbps Ethernet PHY Referen	
Number: TIDA-010046	Rev: E1	Sheet Title: TIDA-010046 PSE Side Block Diagram
SVN Rev: Version control disabled	Assembly Variant: 001	Sheet: 1 of 8
Drawn By: SHARAD YADAV	File: TIDA-010046_PSE_Side_BoardE1_CoverSheet_SideBc	
Engineer: SHARAD YADAV	Contact: http://www.ti.com/support	



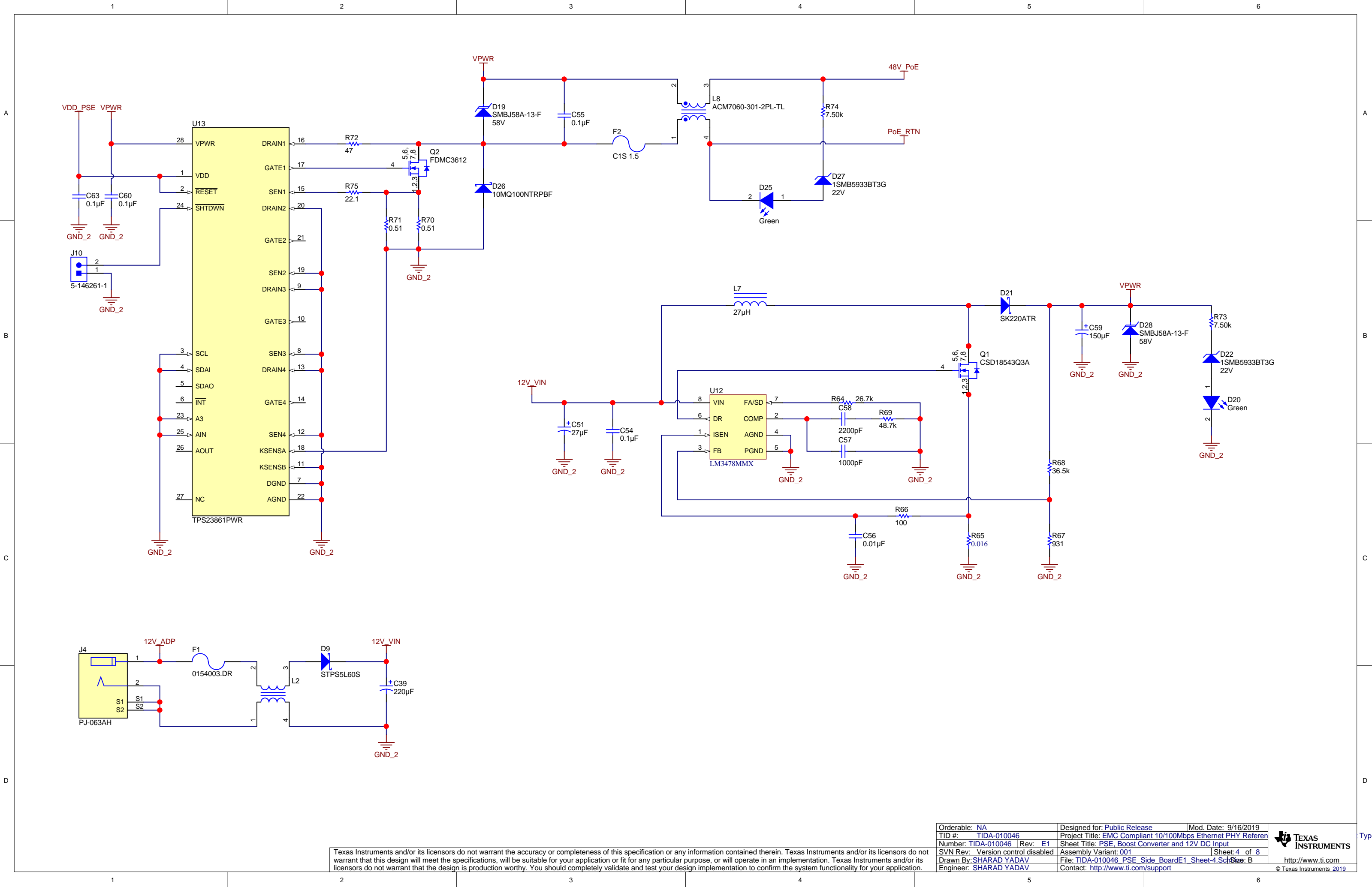
Texas Instruments and/or its licensors do not warrant the accuracy or completeness of this specification or any information contained therein. Texas Instruments and/or its licensors do not warrant that this design will meet the specifications, will be suitable for your application or fit for any particular purpose, or will operate in an implementation. Texas Instruments and/or its licensors do not warrant that the design is production worthy. You should completely validate and test your design implementation to confirm the system functionality for your application.

Orderable: NA	Designed for: Public Release	Mod. Date: 10/10/2019
TID #: TIDA-010046	Project Title: EMC Compliant 10/100Mbps Ethernet PHY Referen	
Number: TIDA-010046	Rev: E1	Sheet Title: RJ45_Termination, Protection and DP83822 Etherne
SVN Rev: Version control disabled	Assembly Variant: 001	Sheet: 2 of 8
Drawn By: SHARAD YADAV	File: TIDA-010046_PSE_Side_BoardE1_Sheet-2.Sch	Size: B
Engineer: SHARAD YADAV	Contact: http://www.ti.com/support	



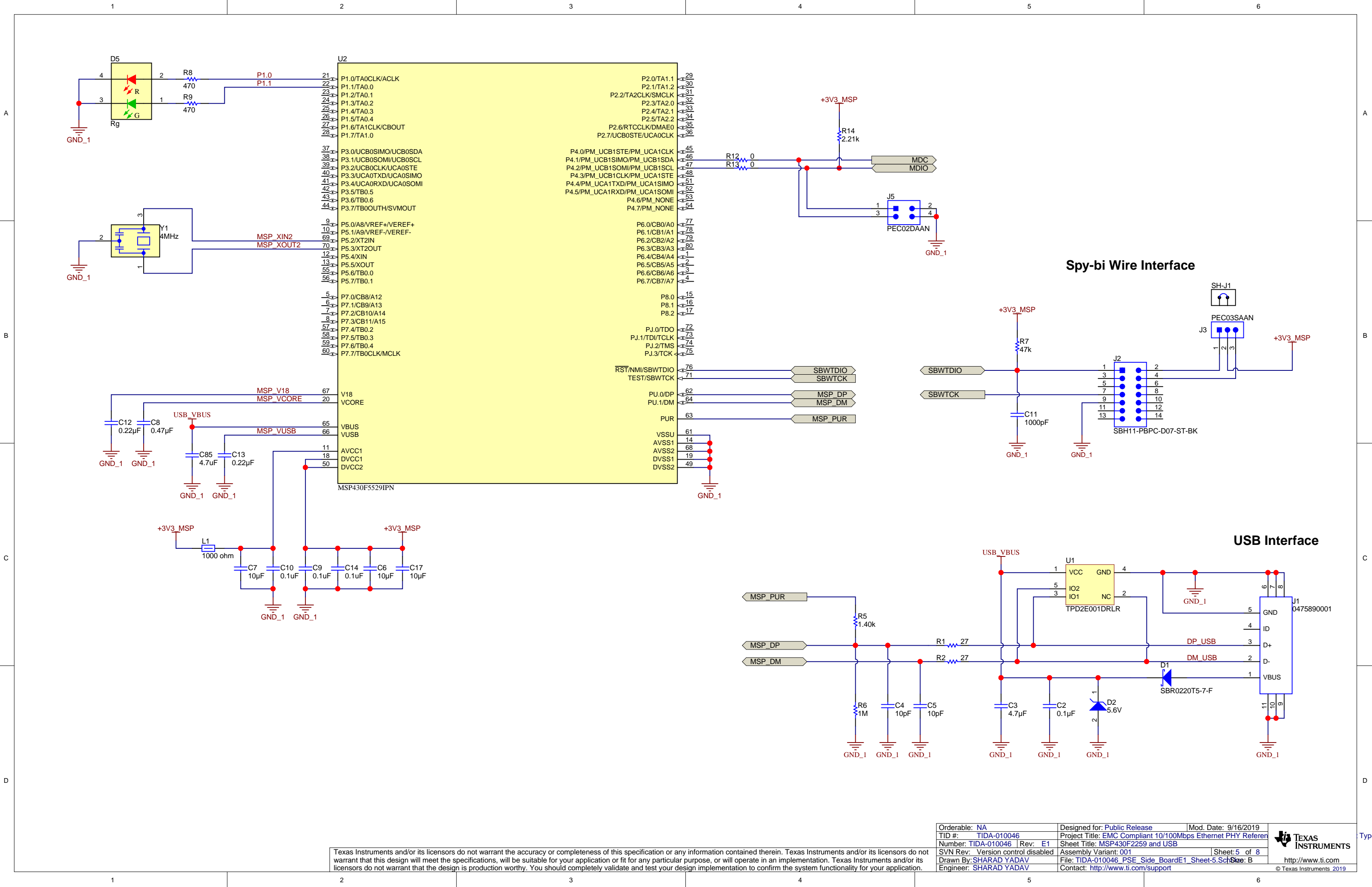
Texas Instruments and/or its licensors do not warrant the accuracy or completeness of this specification or any information contained therein. Texas Instruments and/or its licensors do not warrant that this design will meet the specifications, will be suitable for your application or fit for any particular purpose, or will operate in an implementation. Texas Instruments and/or its licensors do not warrant that the design is production worthy. You should completely validate and test your design implementation to confirm the system functionality for your application.

Orderable: NA	Designed for: Public Release	Mod. Date: 9/16/2019
TID #: TIDA-010046	Project Title: EMC Compliant 10/100Mbps Ethernet PHY Referen	
Number: TIDA-010046 Rev: E1	Sheet Title: RJ45_Termination, Protection and DP83825 Etherne	
SVN Rev: Version control disabled	Assembly Variant: 001	Sheet: 3 of 8
Drawn By: SHARAD YADAV	File: TIDA-010046_PSE_Side_BoardE1_Sheet-3.SchDoc	Size: B
Engineer: SHARAD YADAV	Contact: http://www.ti.com/support	



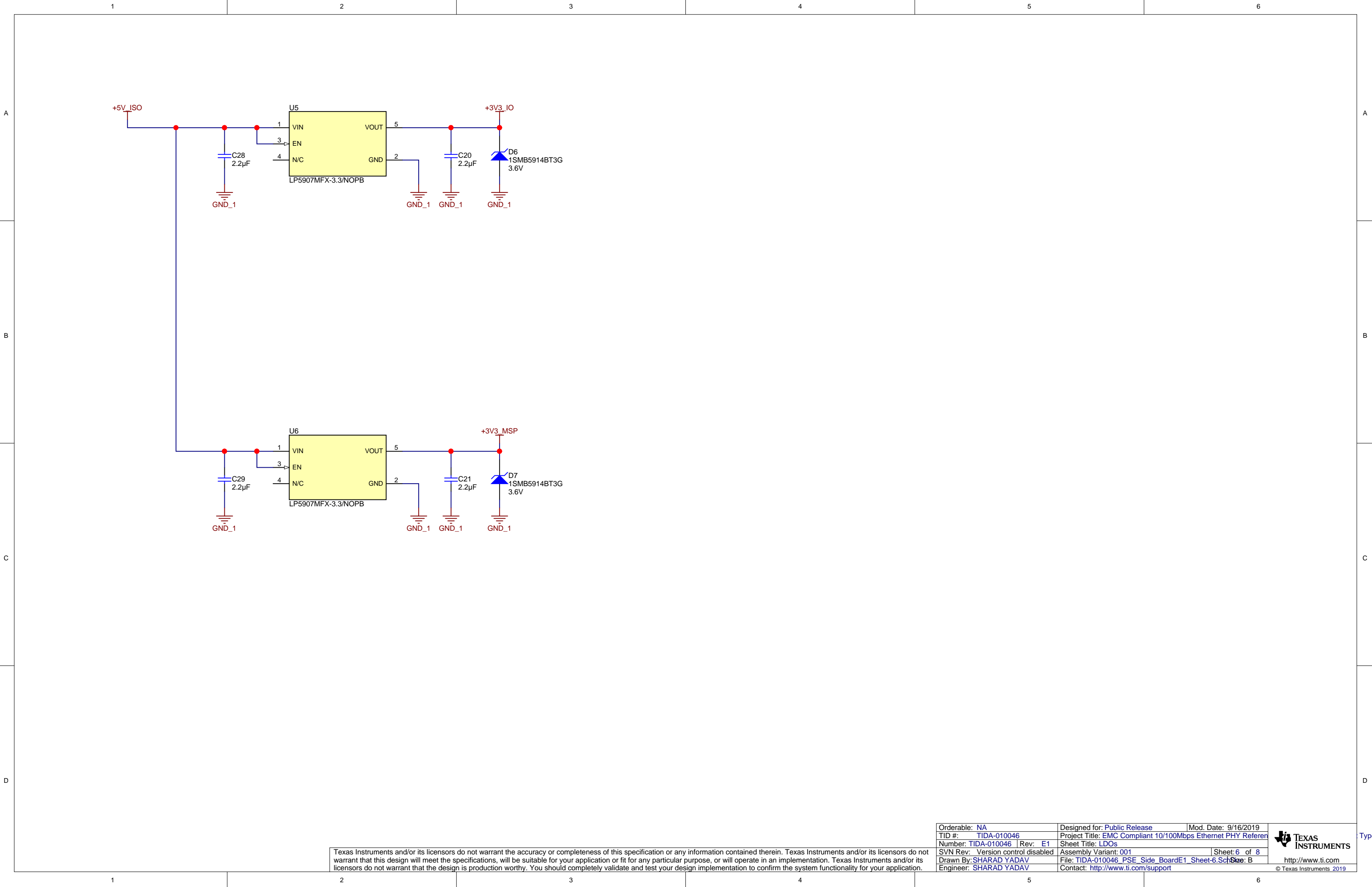
Texas Instruments and/or its licensors do not warrant the accuracy or completeness of this specification or any information contained therein. Texas Instruments and/or its licensors do not warrant that this design will meet the specifications, will be suitable for your application or fit for any particular purpose, or will operate in an implementation. Texas Instruments and/or its licensors do not warrant that the design is production worthy. You should completely validate and test your design implementation to confirm the system functionality for your application.

Orderable: NA	Designed for: Public Release	Mod. Date: 9/16/2019
TID #: TIDA-010046	Project Title: EMC Compliant 10/100Mbps Ethernet PHY Referen	
Number: TIDA-010046	Rev: E1	Sheet Title: PSE, Boost Converter and 12V DC Input
SVN Rev: Version control disabled	Assembly Variant: 001	Sheet: 4 of 8
Drawn By: SHARAD YADAV	File: TIDA-010046_PSE_Side_BoardE1_Sheet-4_Sch	Size: B
Engineer: SHARAD YADAV	Contact: http://www.ti.com/support	



Texas Instruments and/or its licensors do not warrant the accuracy or completeness of this specification or any information contained therein. Texas Instruments and/or its licensors do not warrant that this design will meet the specifications, will be suitable for your application or fit for any particular purpose, or will operate in an implementation. Texas Instruments and/or its licensors do not warrant that the design is production worthy. You should completely validate and test your design implementation to confirm the system functionality for your application.

Orderable: NA	Designed for: Public Release	Mod. Date: 9/16/2019
TID #: TIDA-010046	Project Title: EMC Compliant 10/100Mbps Ethernet PHY Referen	
Number: TIDA-010046	Rev: E1	Sheet Title: MSP430F2259 and USB
SVN Rev: Version control disabled	Assembly Variant: 001	Sheet: 5 of 8
Drawn By: SHARAD YADAV	File: TIDA-010046_PSE_Side_BoardE1_Sheet-5.Sch	Size: B
Engineer: SHARAD YADAV	Contact: http://www.ti.com/support	



Texas Instruments and/or its licensors do not warrant the accuracy or completeness of this specification or any information contained therein. Texas Instruments and/or its licensors do not warrant that this design will meet the specifications, will be suitable for your application or fit for any particular purpose, or will operate in an implementation. Texas Instruments and/or its licensors do not warrant that the design is production worthy. You should completely validate and test your design implementation to confirm the system functionality for your application.

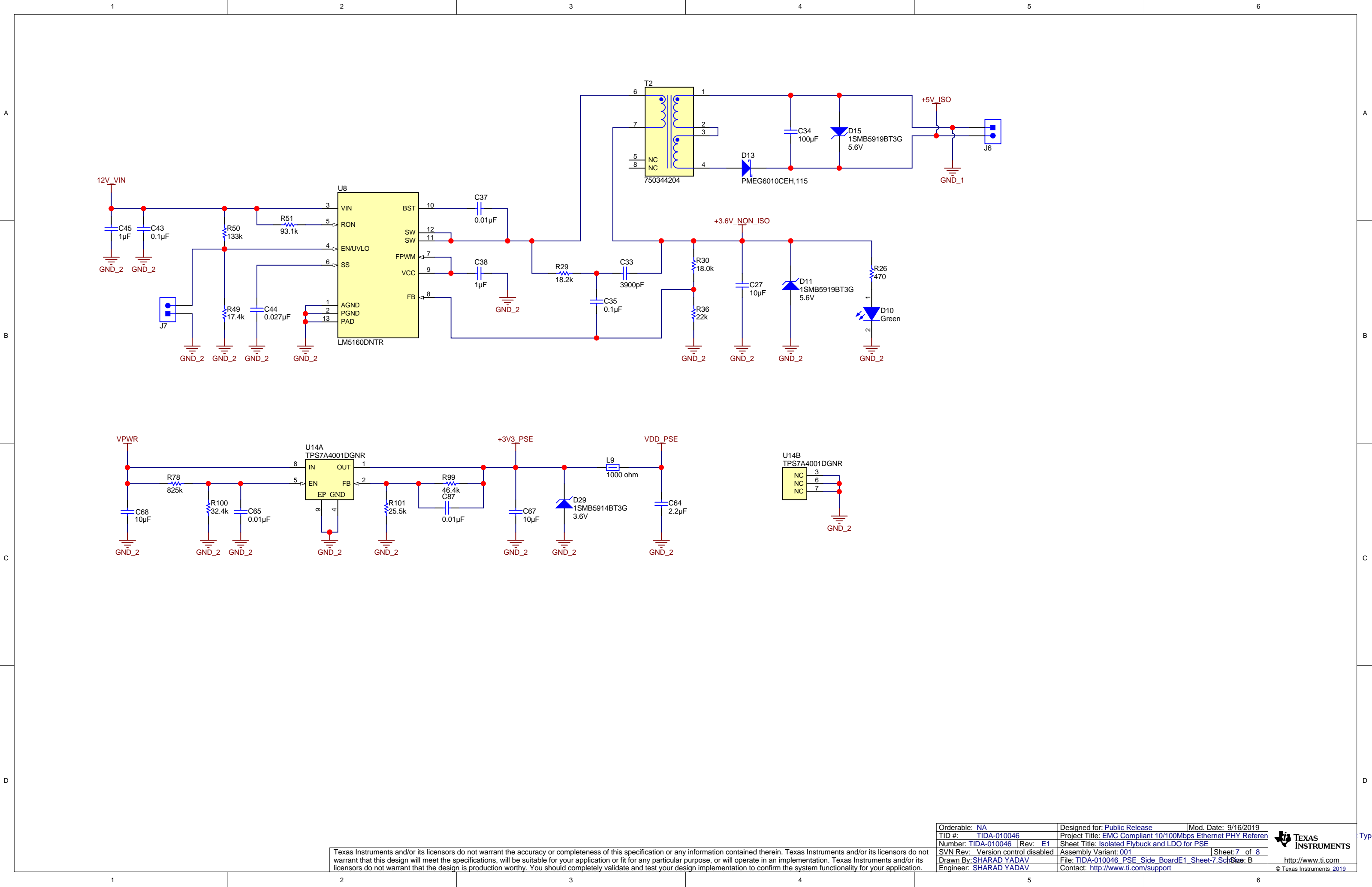
Orderable: NA	Designed for: Public Release	Mod. Date: 9/16/2019
TID #: TIDA-010046	Project Title: EMC Compliant 10/100Mbps Ethernet PHY Referen	
Number: TIDA-010046	Rev: E1	Sheet Title: LDOs
SVN Rev: Version control disabled	Assembly Variant: 001	Sheet: 6 of 8
Drawn By: SHARAD YADAV	File: TIDA-010046_PSE_Side_BoardE1_Sheet-6.Sch	Size: B
Engineer: SHARAD YADAV	Contact: http://www.ti.com/support	



http://www.ti.com

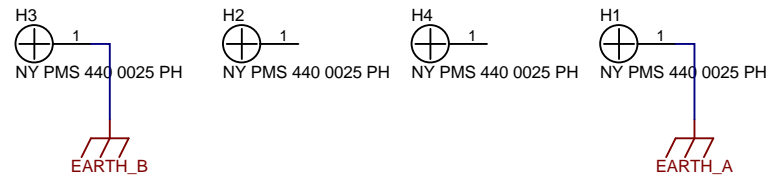
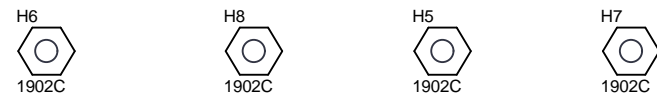
© Texas Instruments 2019

Type-1



Texas Instruments and/or its licensors do not warrant the accuracy or completeness of this specification or any information contained therein. Texas Instruments and/or its licensors do not warrant that this design will meet the specifications, will be suitable for your application or fit for any particular purpose, or will operate in an implementation. Texas Instruments and/or its licensors do not warrant that the design is production worthy. You should completely validate and test your design implementation to confirm the system functionality for your application.

Orderable: NA	Designed for: Public Release	Mod. Date: 9/16/2019
TID #: TIDA-010046	Project Title: EMC Compliant 10/100Mbps Ethernet PHY Referen	
Number: TIDA-010046	Rev: E1	Sheet Title: Isolated Flybuck and LDO for PSE
SVN Rev: Version control disabled	Assembly Variant: 001	Sheet: 7 of 8
Drawn By: SHARAD YADAV	File: TIDA-010046_PSE_Side_BoardE1_Sheet-7.Sch	Size: B
Engineer: SHARAD YADAV	Contact: http://www.ti.com/support	



PCB
LOGO
WEEE logo

PCB
LOGOPCB
LOGO

PCB
LOGO
Logo4

[illegible]

ZZ4

Label Assembly Note

This Assembly Note is for PCB labels only

ZZ3

Assembly Note

These assemblies are ESD sensitive, ESD precautions shall be observed.

Z72

Assembly Note

These assemblies must be clean and free from flux and all contaminants. Use of no clean flux is not acceptable.

ZZ1

Assembly Note

These assemblies must comply with workmanship standards IPC-A-610 Class 2, unless otherwise specified.