

ZZ1 ■ Install label in silkscreened box after final wash. Text shall be 8 pt font. Text shall be per the Label Table in the PDF schematic.

ZZ2 ■ These assemblies are ESD sensitive, ESD precautions shall be observed.

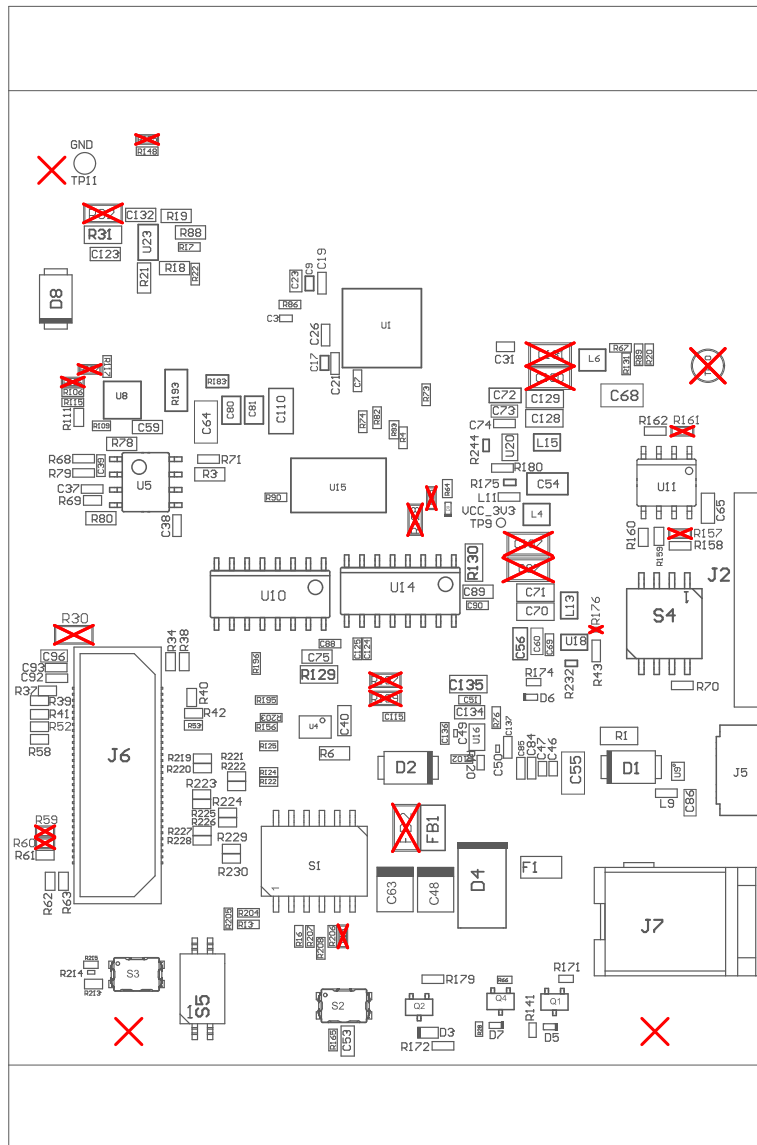
ZZ3 ■ These assemblies must be clean and free from flux and all contaminants. Use of no clean flux is not acceptable.

ZZ4 ■ These assemblies must comply with workmanship standards IPC-A-610 Class 2, unless otherwise specified.

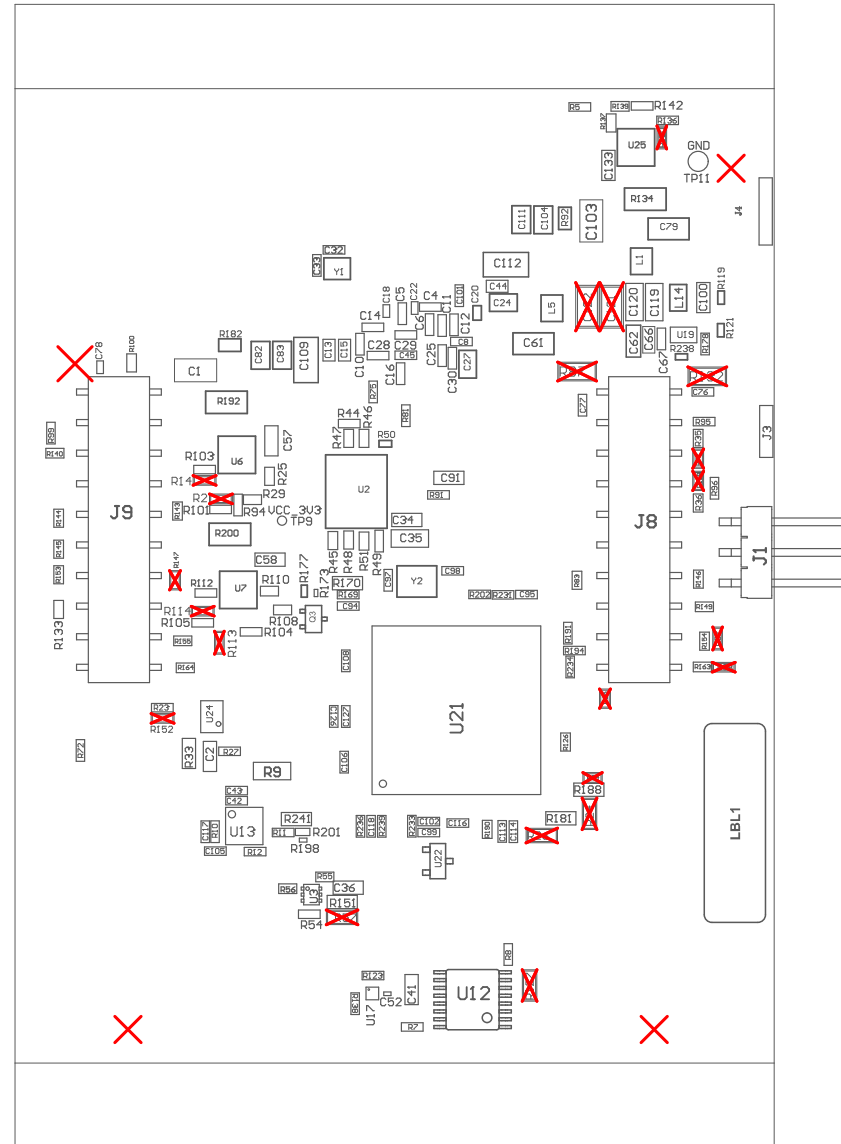
ZZ5 ■ INDICATION FOR COMPONENTS D\* ARE GIVEN AT THEIR CATHODE SIDE.

COMPONENTS MARKED 'DNP' SHOULD NOT BE POPULATED.

ASSEMBLY VARIANT: 002\_AWR



PCB VIEWED FROM TOP SIDE	BOARD #: PROC117	REV: B	SUN REV: 1460 [Modified]
Assembly Layer Top	TID #: N/A		
PLOT NAME = Top Assembly Drawing	GENERATED : 20-07-2023 12:05:39	TEXAS INSTRUMENTS	



COMPONENTS MARKED 'DNP' SHOULD NOT BE POPULATED.  
 ASSEMBLY VARIANT: 002\_AWR

PCB VIEWED FROM BOTTOM SIDE	BOARD #: PROC117	REV: B	SUN REV: 1460 [Modified]
Assembly Bottom Layer	TID #: N/A		
PLOT NAME = Bottom Assembly Drawing	GENERATED : 20-07-2023 12:05:39	TEXAS INSTRUMENTS	