

# Texas Instruments Inc.

## WL18xxCOM82SDMMC

### TI WL18XX SDMMC & UART Adapter

#### History Change

Revision	Date	Description	Prepared By
D 0.1	2014/09/17	Initial released.	Hsinwei Wang
D 0.2	2014/11/11	Modified resistor value of LEDs. Moved the LED2 to the 3.3V system instead of the LDO.	Hsinwei Wang



**Texas Instruments**

Title

WL18XX SDMMC & UART Adapter

Size  
A

Document Number

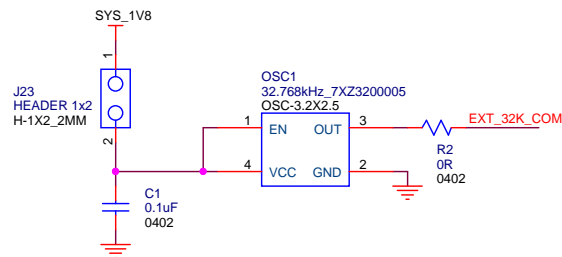
WL18xxCOM82SDMMC-SCH

Rev  
D02

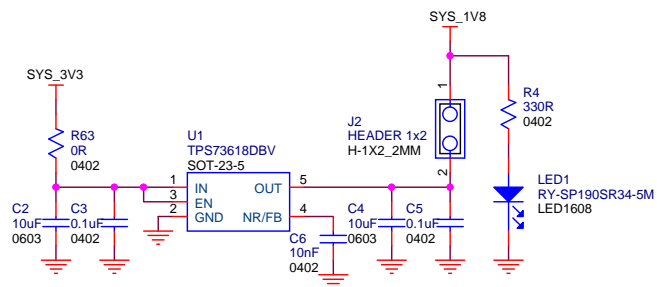
Date: Tuesday, November 11, 2014

Sheet 1 of 6

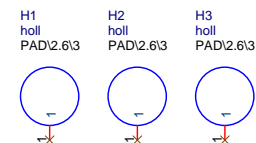
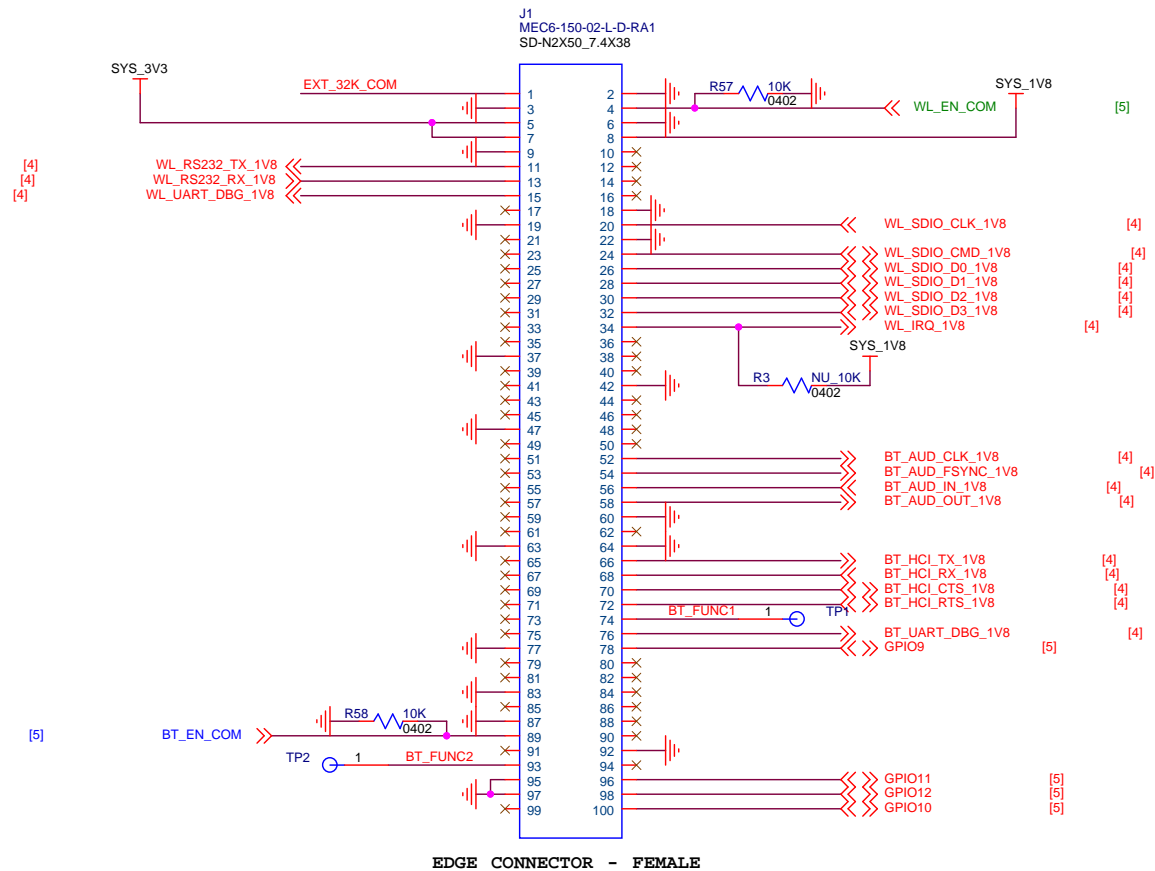
## External 32KHz for COM



## 1.8V LDO for COM

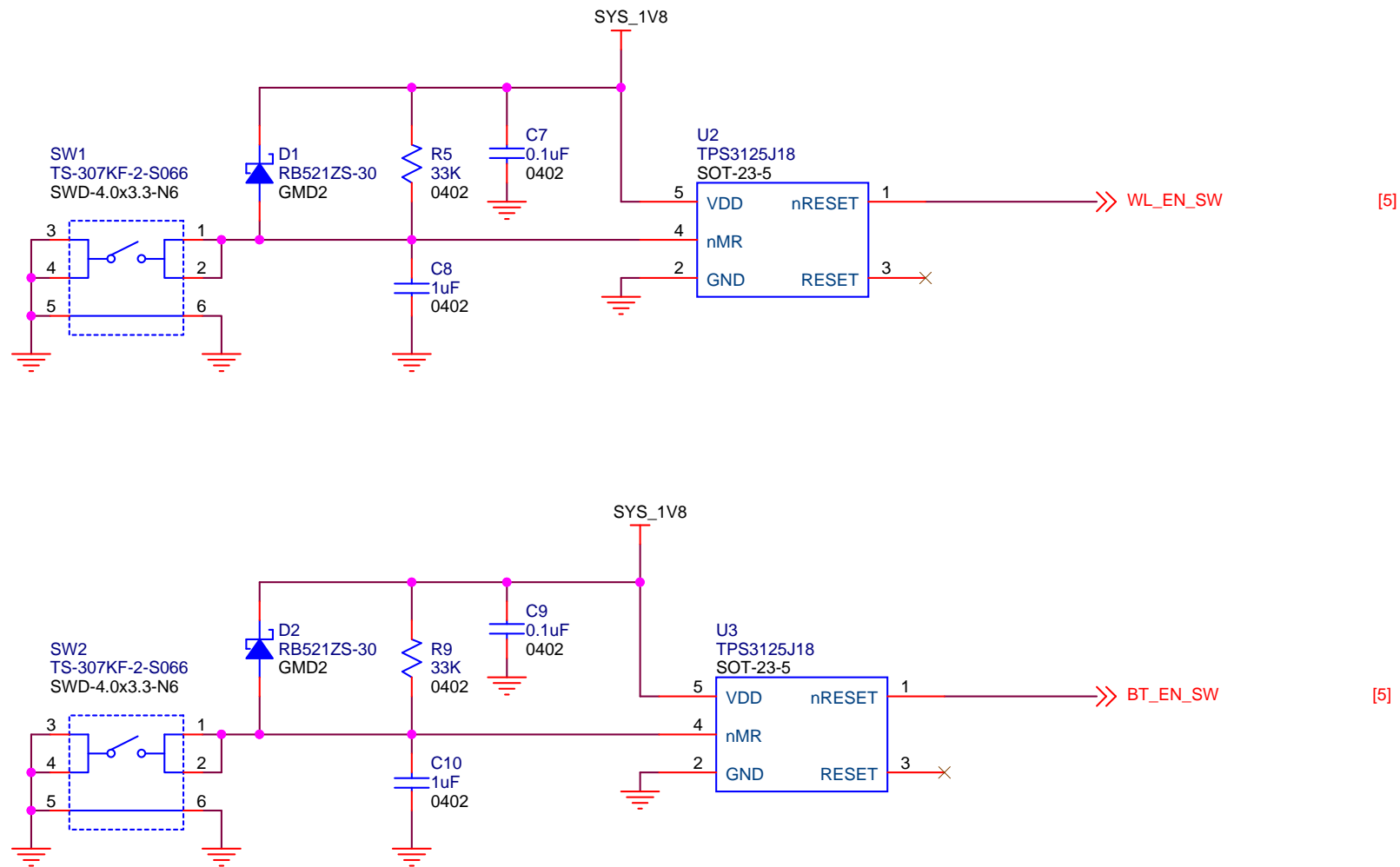


## Walink Module COM

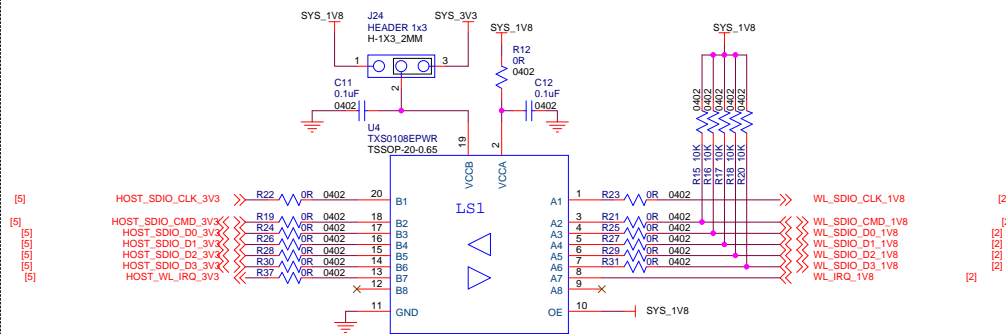


Texas Instruments

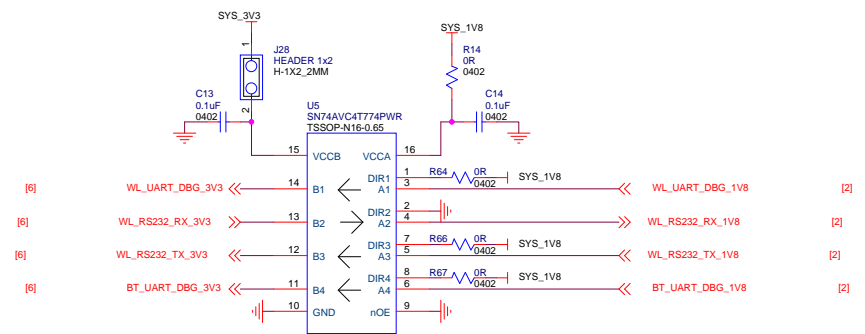
Title		
WL18XX SDRAM & UART Adapter		
Size	Document Number	Rev
B	WL18xxCOM82SDMMC-SCH	D02
Date:	Tuesday, November 11, 2014	Sheet 2 of 6



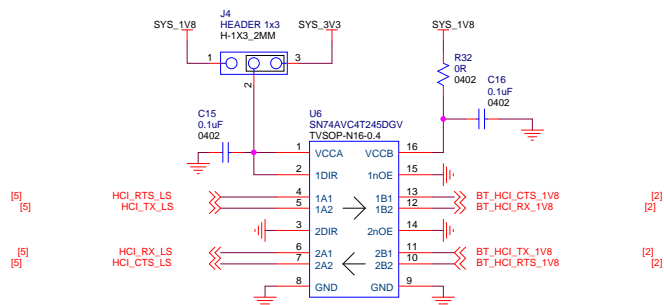
## WiFi SDIO 1.8V to 3.3V Level Shifters



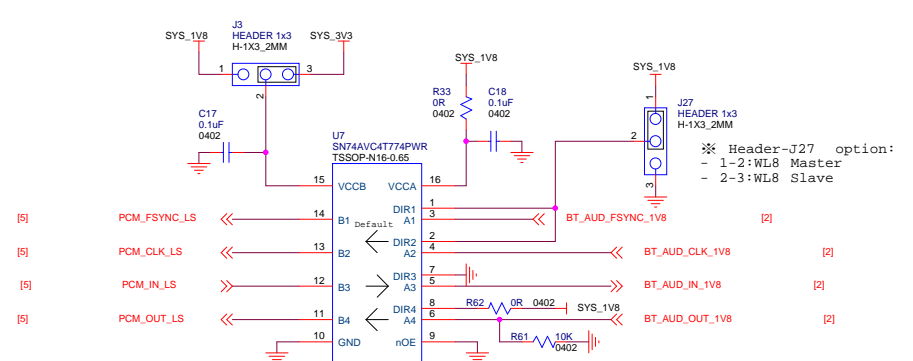
## Debug 1.8V to 3.3V Level Shifters



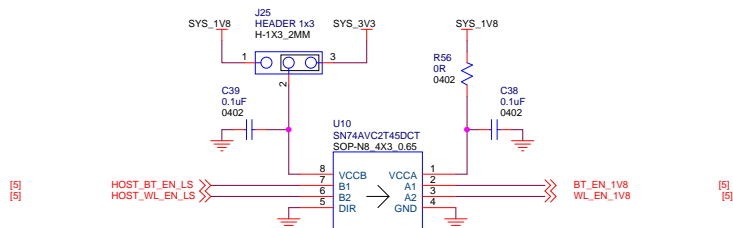
## BT UART 1.8V to 1.8V/3.3V Level Shifters



## BT PCM 1.8V to 1.8V/3.3V Level Shifters

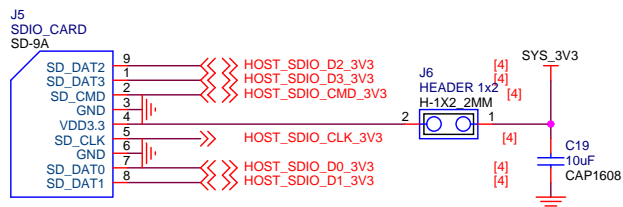


## Enable 1.8V to 1.8V/3.3V Level Shifters

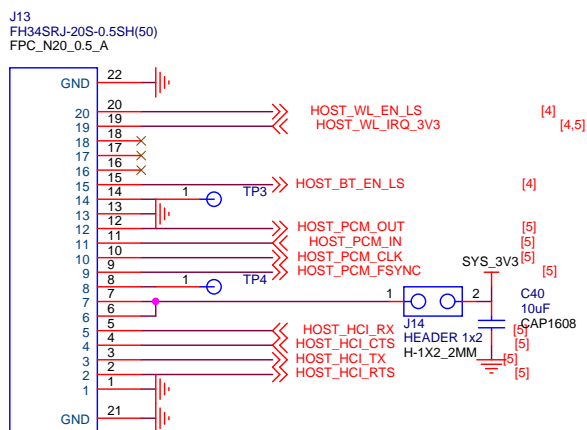


Title		
WL18XX SDMMC & UART Adapter		
Size	Document Number	Rev
Custom	WL18xxCOM82SDMMC-SCH	D02
Date:	Tuesday, November 11, 2014	Sheet 4 of 6

## SD-MMC Connect

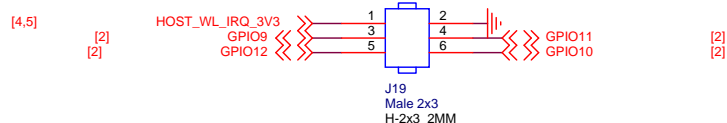


## FPC Connect

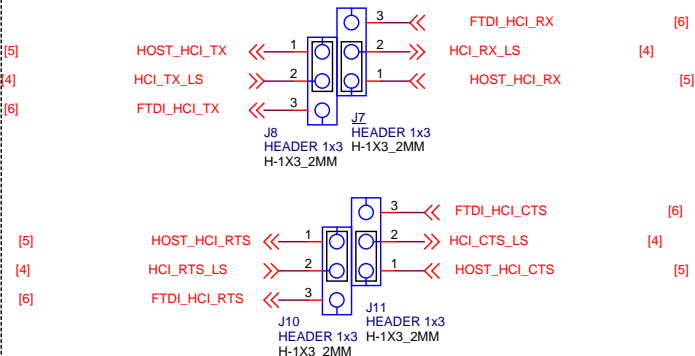


Connect to SABRE Board ribbon.

## DBG Header

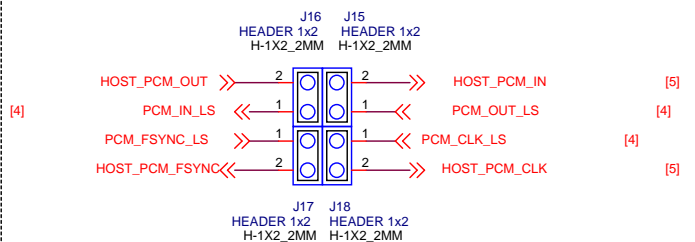


## Host/FTDI UART Option

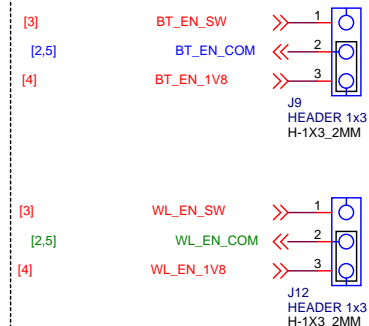


Host mode	Debug mode (FTDI)	Host mode (Swapped RX,TX and RTS,CTS)
J7,J8,J10,J11 -(short 1-2)	J7,J8,J10,J11 -(short 2-3)	J7-1 to J8-2 / J8-1 to J1-2 J10-1 to J11-2 / J11-1 to J12-2

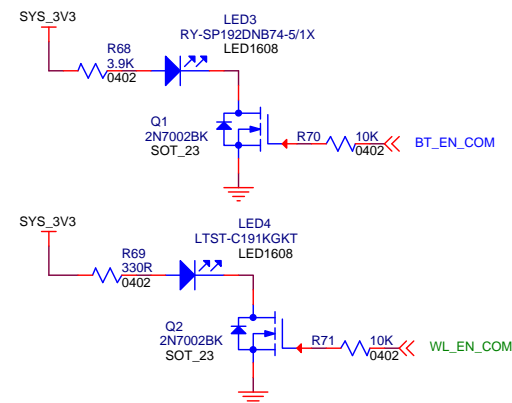
## Host PCM Jumper



## Enable Option



※ Header-J9/J12 option:  
- Enable controlled by Switch: 1-2 short.  
- Enable controlled by Host: 2-3 short.



Texas Instruments

Title			WL18XX SDRAM & UART Adapter
Size B	Document Number	WL18xxCOM82SDMMC-SCH	
Date:	Tuesday, November 11, 2014	Sheet	5 of 6

