

FM1

A1

FM2

P3

C257

R256

L303

C303

L302

L311

C302

L301

C312

C311

C301

C281

C251

C221

R221

C211

C1

J

R181

R191

C271

C261

C251

C221

R221

C211

C1

J

R181

R191

C271

C261

C251

C221

R221

C211

C1

J

R181

R191

X2

R371
C371
C361
R361

R351

C5
C4
C3
C411
C421
C431

C391
C392

C311
C301

C281

C251

C221
R221

C211

C1

J

R181

R191

C271

C261

C251

C221

R221

UI



**TEXAS
INSTRUMENTS**
CC2545EM 1.1

FM3

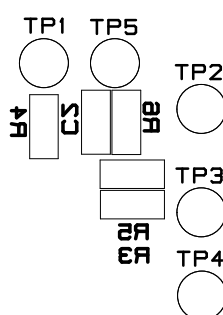
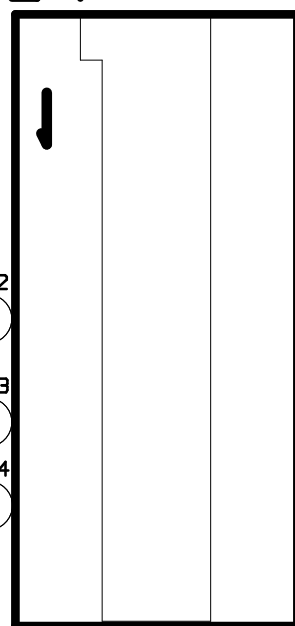
FCC ID: ZAT2545EM
IC: 451H-2545EM

CC

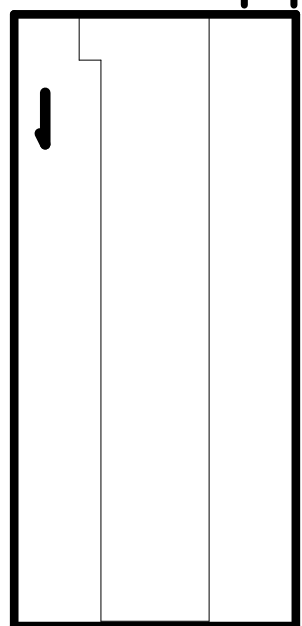
FM4

FM2

P2

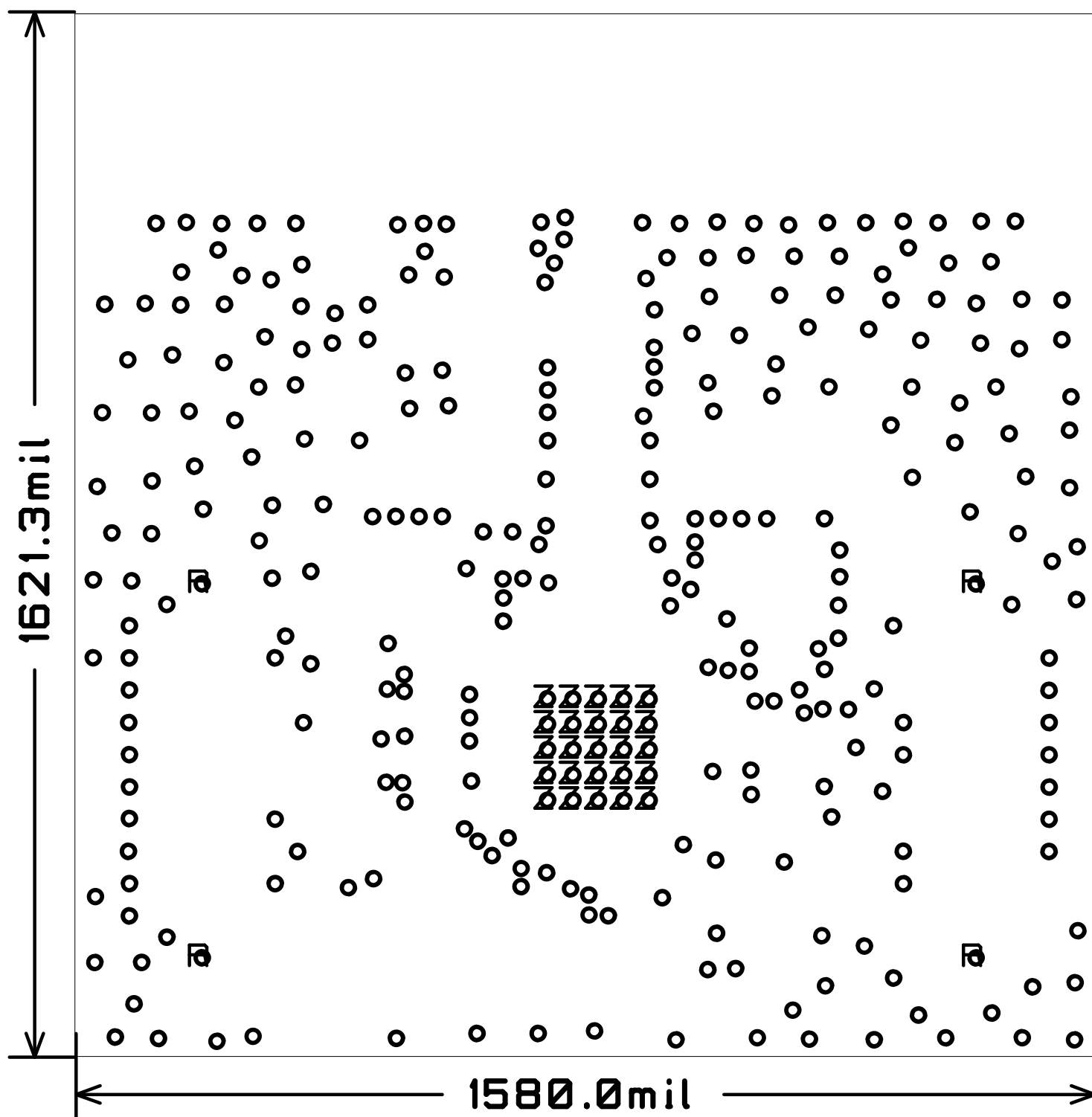


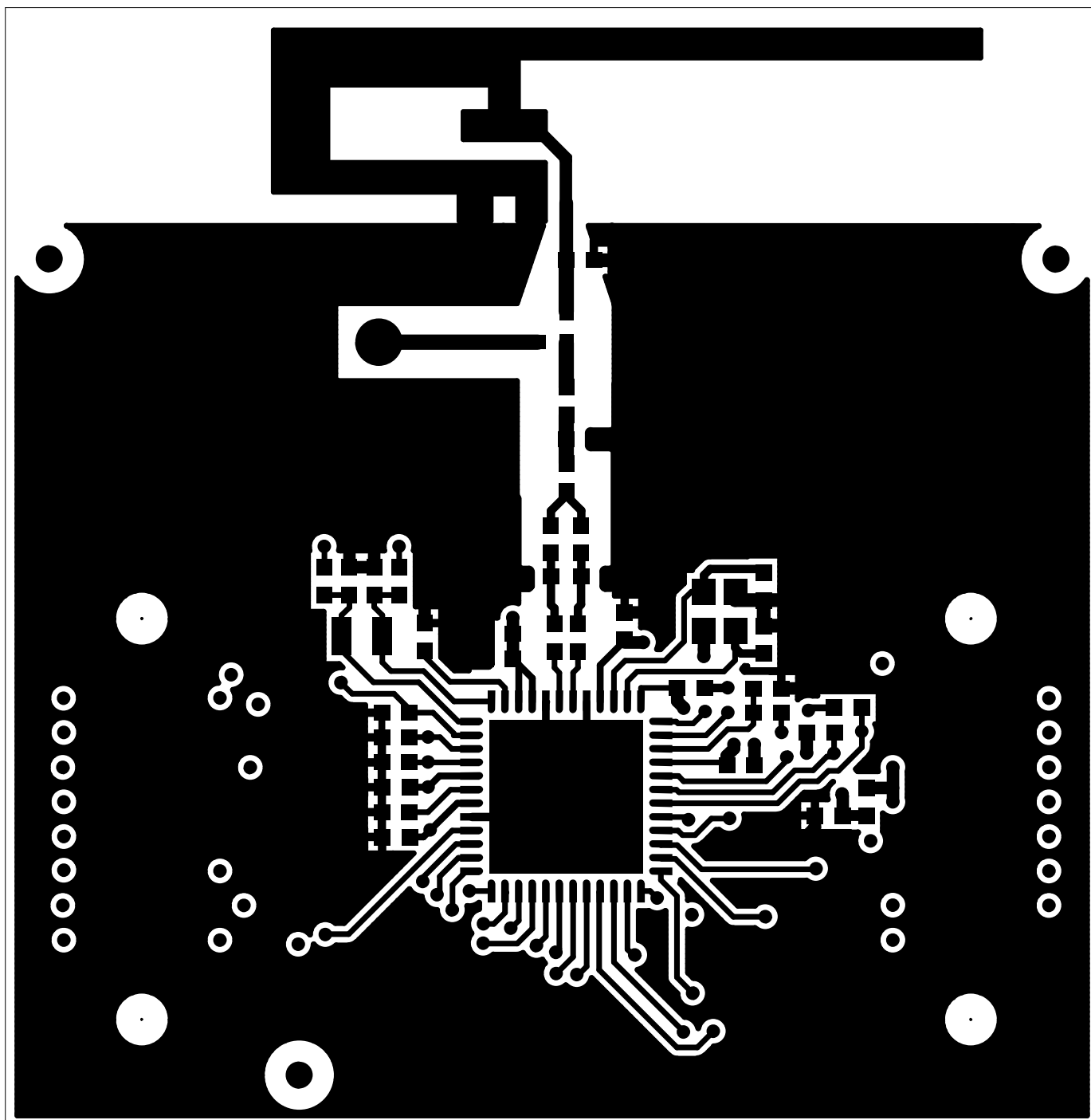
P1

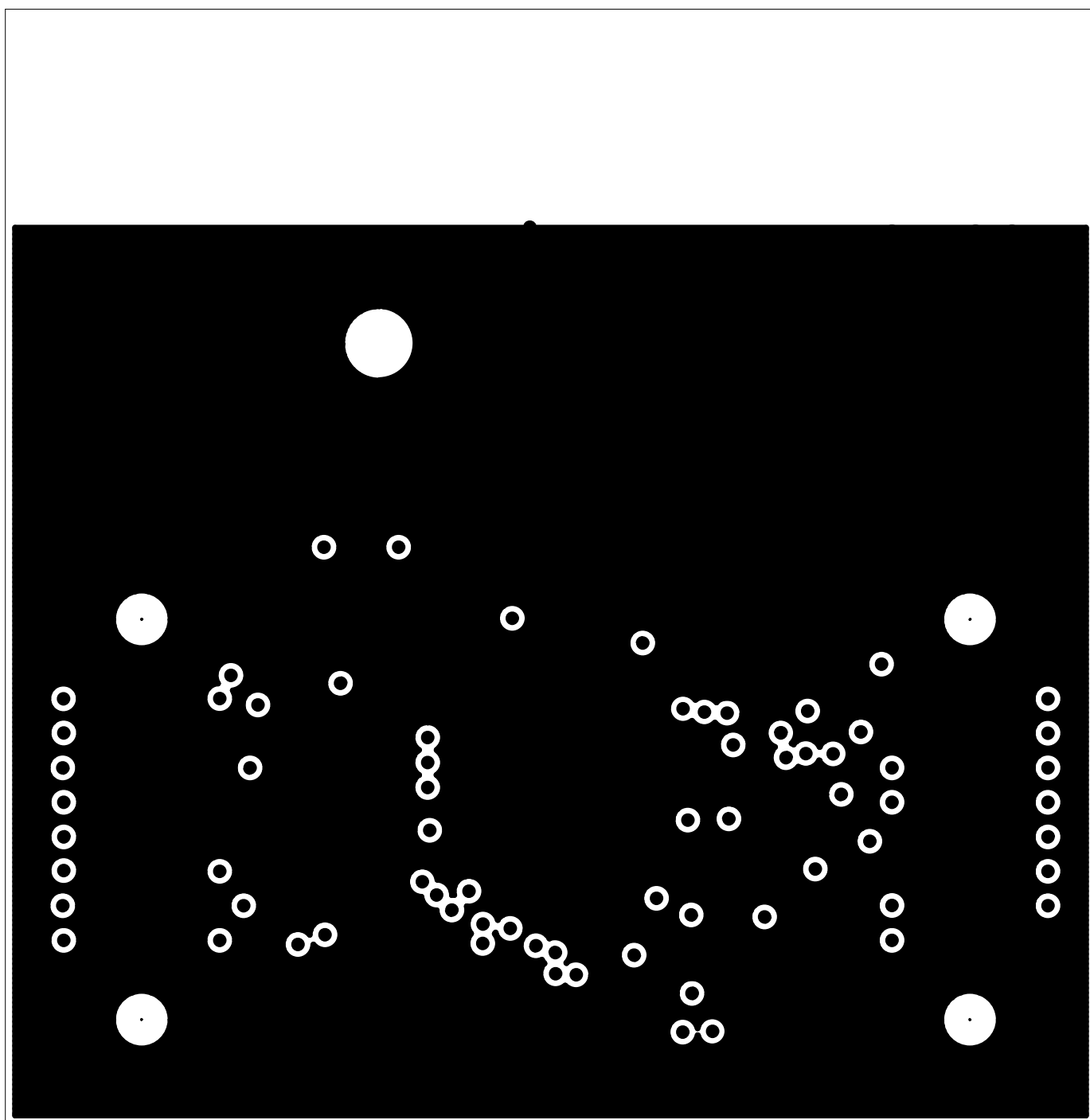


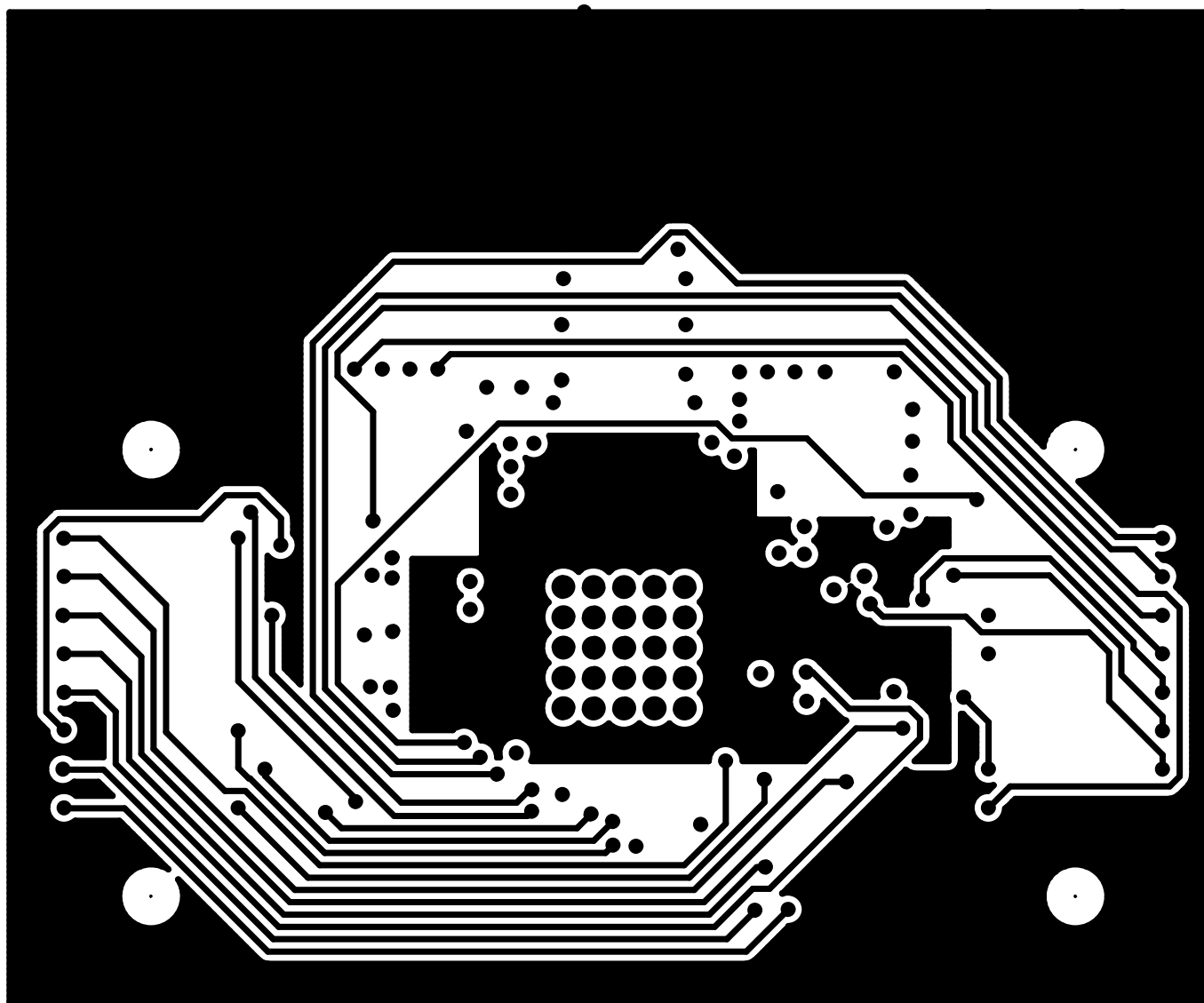
FM3

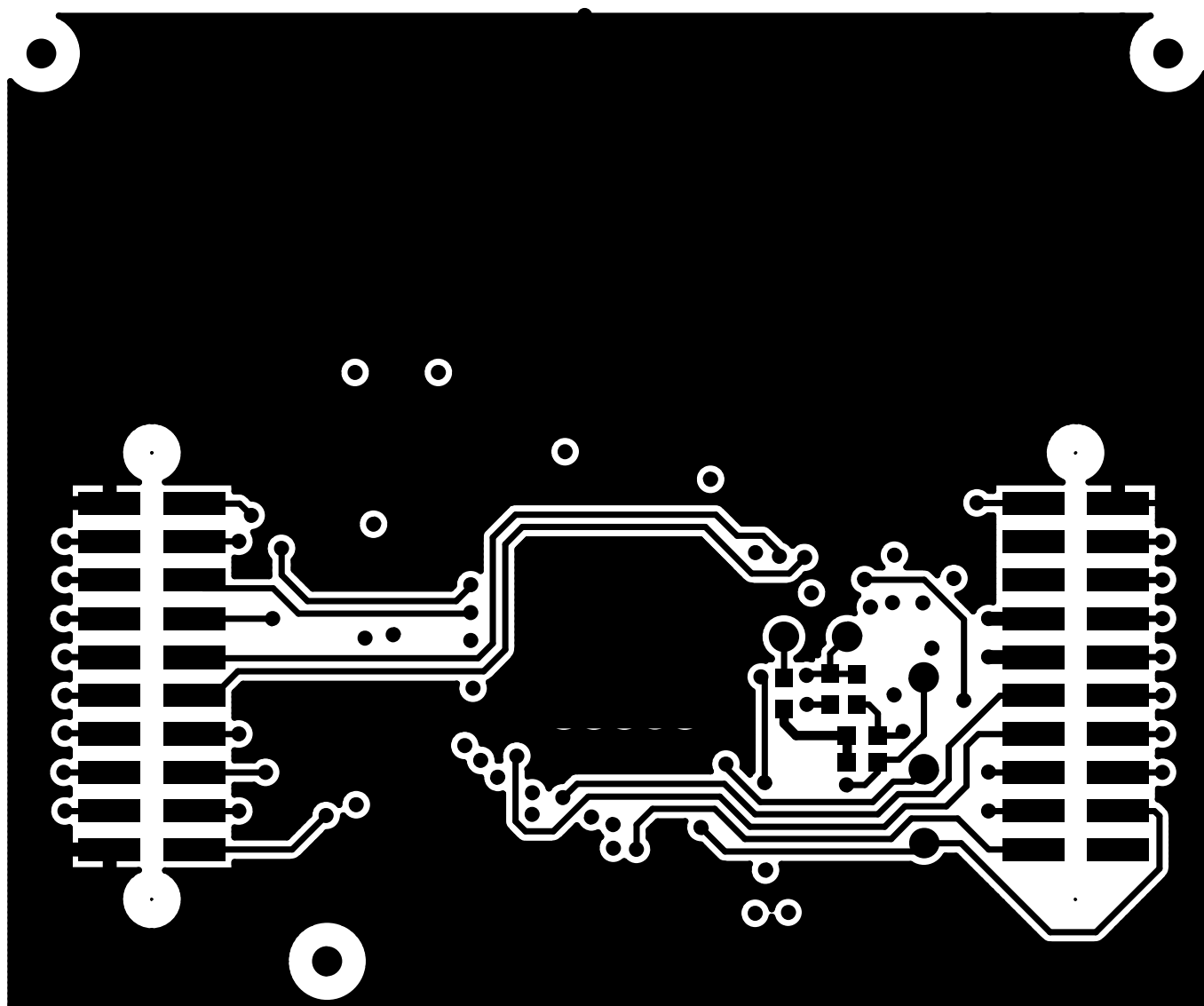
Max. 3.3V

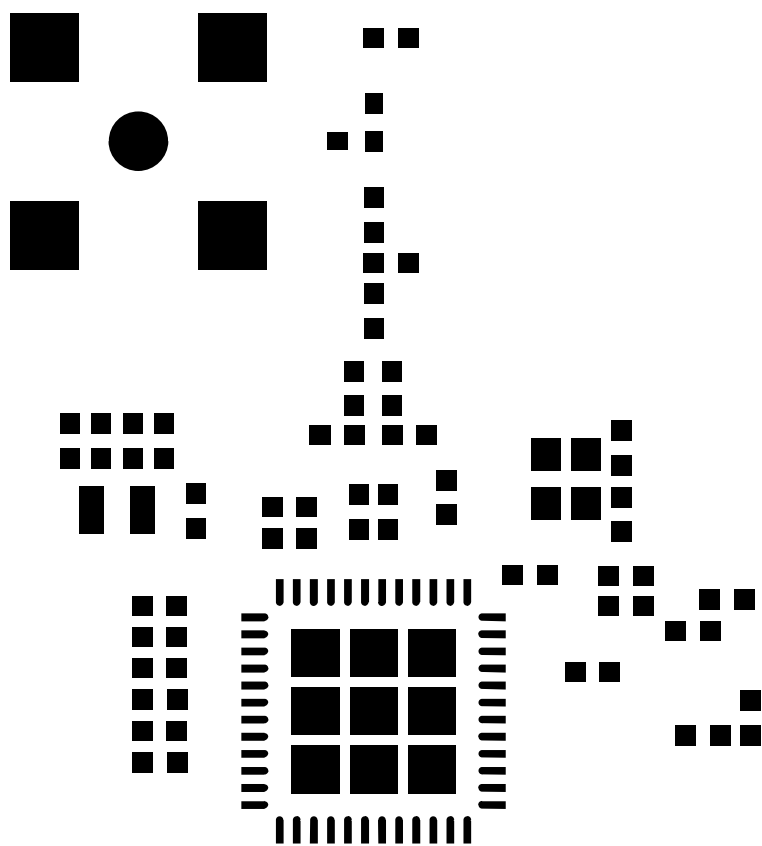


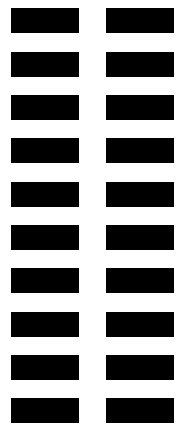
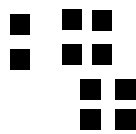
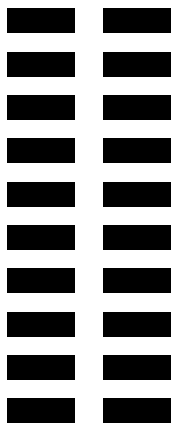


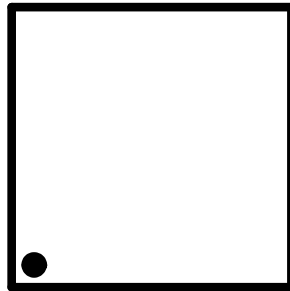
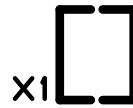
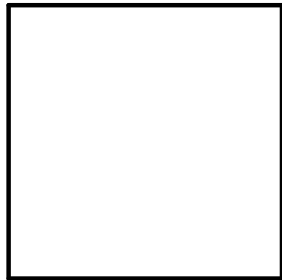












FCC ID: ZAT2545EM
IC: 451H-2545EM



**TEXAS
INSTRUMENTS**
CC2545EM 1.1

CC

