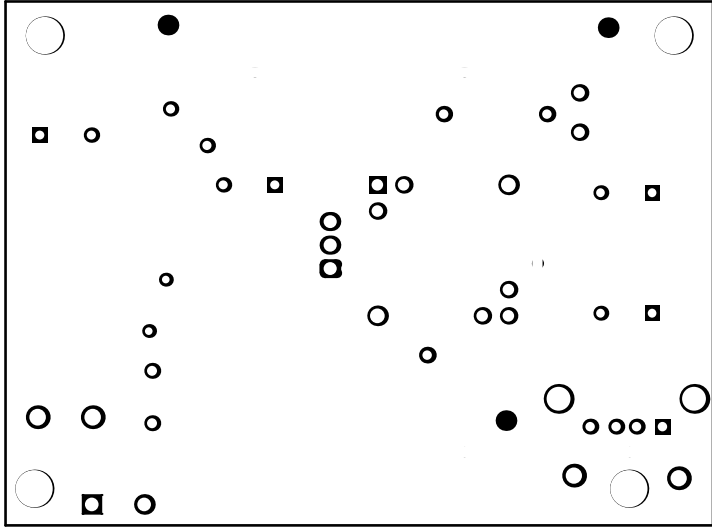
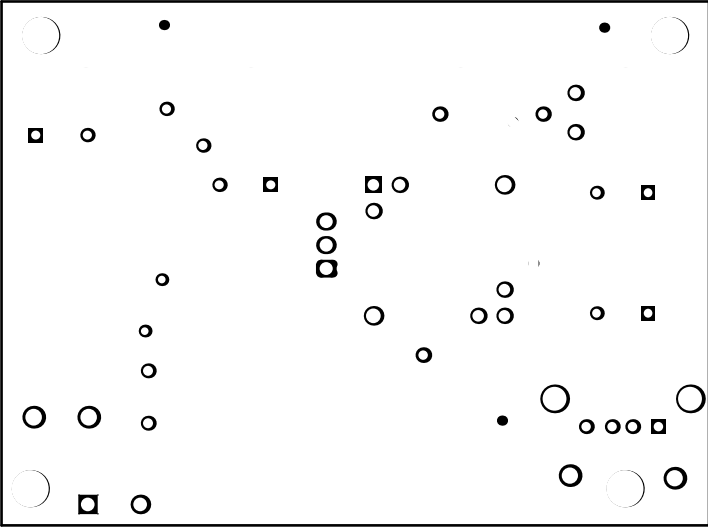


ALL ARTWORK VIEWED FROM TOP SIDE	BOARD #: PWR724	REV: A	SUN REV: Not In VersionControl
LAYER NAME = Top Overlay	TID #: N/A		
PLOT NAME = Top Overlay	GENERATED : 1/26/2016	10:00:28 AM	TEXAS INSTRUMENTS

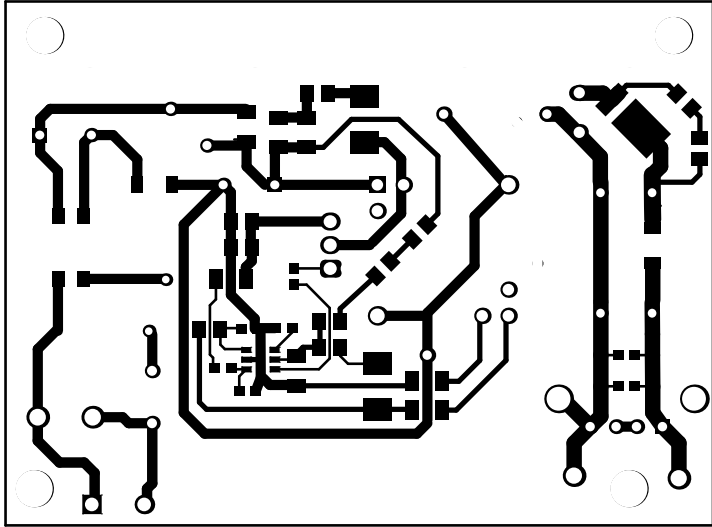


ALL ARTWORK VIEWED FROM TOP SIDE	BOARD #: PWR724	REV: A	SUN REV: Not In VersionControl
LAYER NAME = Top Solder	TID #: N/A		
PLOT NAME = Top Solder Mask	GENERATED : 1/26/2016 10:00:29 AM		TEXAS INSTRUMENTS

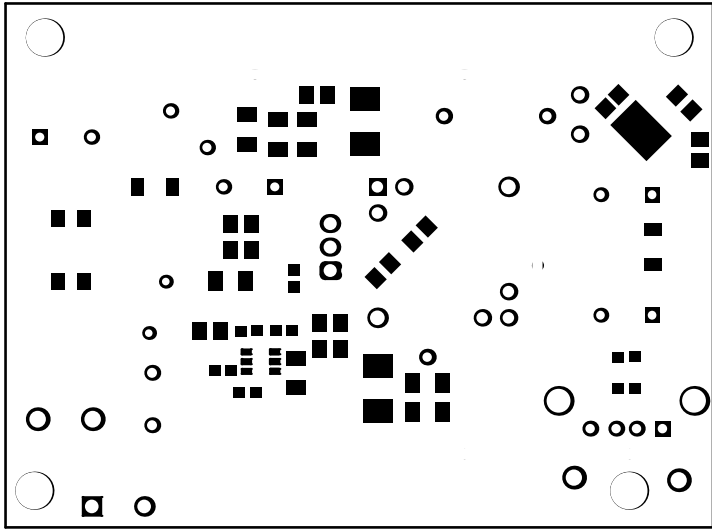


ALL ARTWORK VIEWED FROM TOP SIDE	BOARD #: PWR724	REV: A	SUN REV: Not In VersionControl
LAYER NAME = Top Layer	TID #: N/A		
PLOT NAME = Top Layer	GENERATED : 1/26/2016 10:00:30 AM		TEXAS INSTRUMENTS

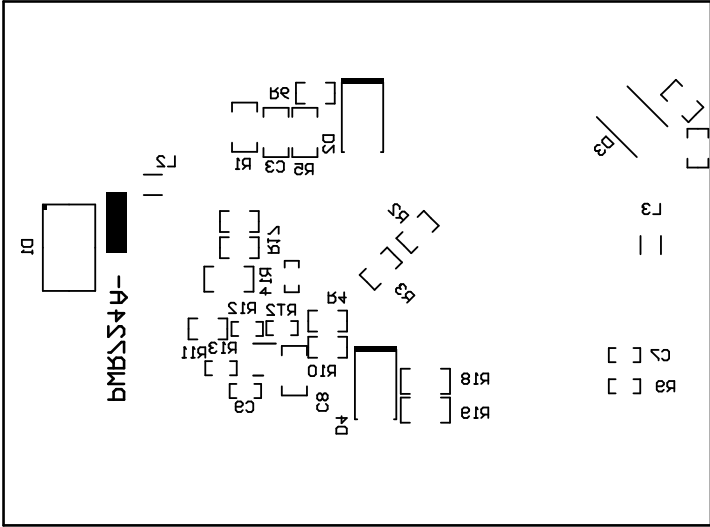
\_\_\_\_\_



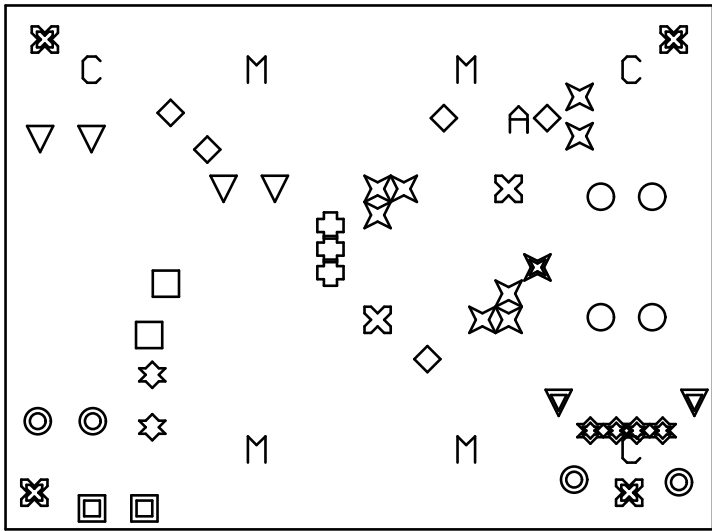
ALL ARTWORK VIEWED FROM TOP SIDE	BOARD #: PWR724	REV: A	SUN REV: Not In VersionControl
LAYER NAME = Bottom Layer	TID #: N/A		
PLOT NAME = Bottom Layer	GENERATED : 1/26/2016 10:00:31 AM		TEXAS INSTRUMENTS



ALL ARTWORK VIEWED FROM TOP SIDE	BOARD #: PWR724	REV: A	SUN REV: Not In VersionControl
LAYER NAME = Bottom Solder	TID #: N/A		
PLOT NAME = Bottom Solder Mask	GENERATED : 1/26/2016 10:00:32 AM		TEXAS INSTRUMENTS

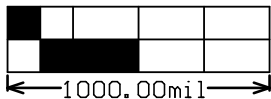
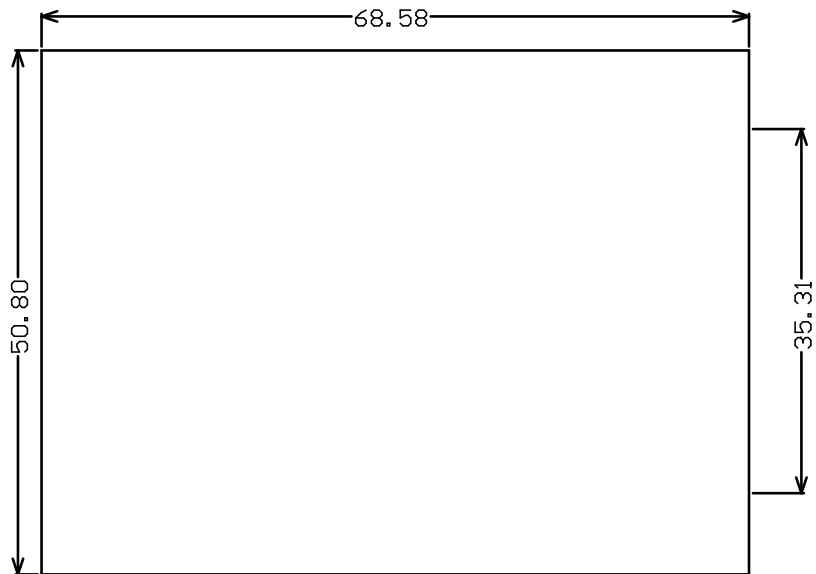


ALL ARTWORK VIEWED FROM TOP SIDE	BOARD #: PWR724	REV: A	SUN REV: Not In VersionControl
LAYER NAME = Bottom Overlay	TID #: N/A		
PLOT NAME = Bottom Overlay	GENERATED : 1/26/2016 10:00:33 AM		TEXAS INSTRUMENTS



Symbol	Quantity	Finished Hole Size	Plated	Hole Type
✕	4	141.73mil (3.600mm)	NPTH	Round
△	1	39.37mil (1.000mm)	NPTH	Slot
C	3	39.37mil (1.000mm)	NPTH	Slot
M	4	39.37mil (1.000mm)	NPTH	Slot
✕	1	39.37mil (1.000mm)	NPTH	Slot
□	2	29.53mil (0.750mm)	PTH	Round
○	4	33.46mil (0.850mm)	PTH	Round
▽	4	35.00mil (0.889mm)	PTH	Round
◇	5	35.43mil (0.900mm)	PTH	Round
✱	4	36.22mil (0.920mm)	PTH	Round
✱	2	37.40mil (0.950mm)	PTH	Round
✕	8	43.31mil (1.100mm)	PTH	Round
⊕	3	49.21mil (1.250mm)	PTH	Round
■	2	51.18mil (1.300mm)	PTH	Round
✕	2	55.12mil (1.400mm)	PTH	Round
●	4	63.00mil (1.600mm)	PTH	Round
▽	2	90.55mil (2.300mm)	PTH	Round
55 Total				

ALL ARTWORK VIEWED FROM TOP SIDE	BOARD #: PWR724	REV: A	SUN REV: Not In VersionControl
LAYER NAME = Drill Drawing	TID #: N/A		
PLOT NAME = Drill Drawing	GENERATED : 1/26/2016 10:00:34 AM	TEXAS INSTRUMENTS	



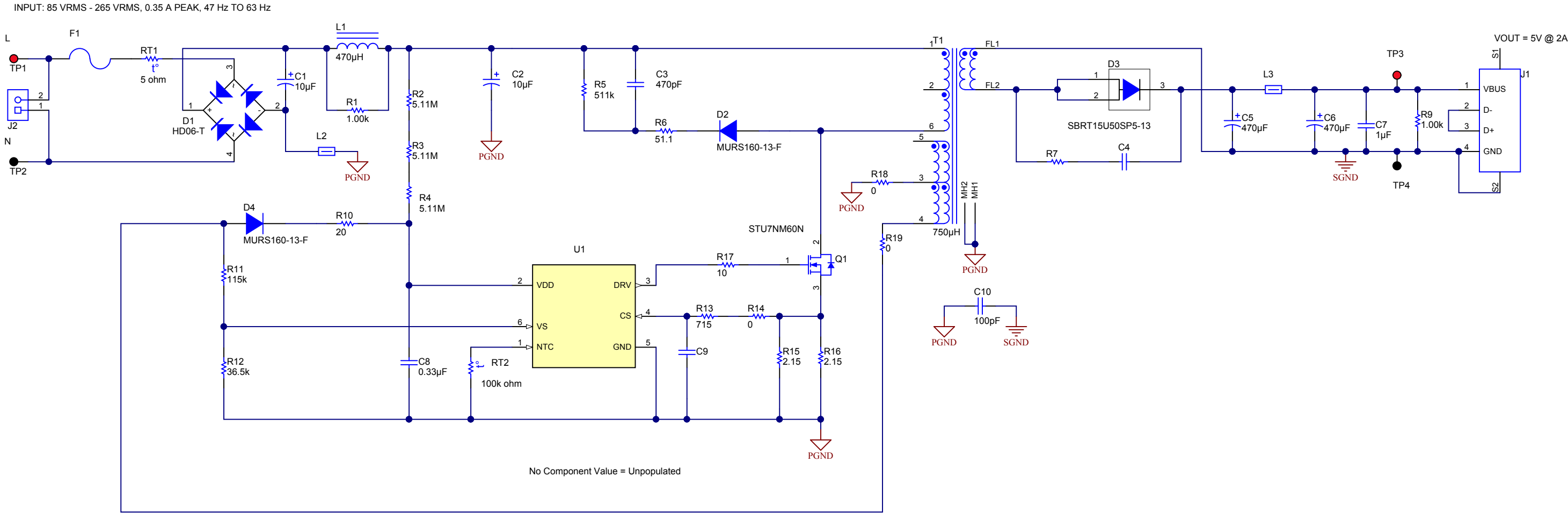
ALL ARTWORK VIEWED FROM TOP SIDE	BOARD #: PWR724	REV: A	SUN REV: Not In VersionControl
LAYER NAME = M2 Board Dimensions	TID #: N/A		
PLOT NAME = Board Dimensions	GENERATED : 1/26/2016 10:00:35 AM		TEXAS INSTRUMENTS



DANGER HIGH VOLTAGE

Revision History

Rev	ECN #	Approved Date	Approved by	Notes
E1	N/A	N/A	N/A	Initial Schematic and Component Placement



No Component Value = Unpopulated

Texas Instruments and/or its licensors do not warrant the accuracy or completeness of this specification or any information contained therein. Texas Instruments and/or its licensors do not warrant that this design will meet the specifications, will be suitable for your application or fit for any particular purpose, or will operate in an implementation. Texas Instruments and/or its licensors do not warrant that the design is production worthy. You should completely validate and test your design implementation to confirm the system functionality for your application.

Orderable: <a href="#">EVM_orderable</a>	Designed for: <a href="#">Public Release</a>	Mod. Date: 1/25/2016
TID #: <a href="#">N/A</a>	Project Title: <a href="#">UCC28704EVM-724</a>	
Number: <a href="#">PWR724</a>	Rev: <a href="#">A</a>	Sheet Title:
SVN Rev: <a href="#">Version control disabled</a>	Assembly Variant: <a href="#">[No Variations]</a>	Sheet: <a href="#">1 of 3</a>
Drawn By:	File: <a href="#">PWR724.SchDoc</a>	Size: <a href="#">B</a>
Engineer: <a href="#">M O'Loughlin</a>	Contact: <a href="#">http://www.ti.com/support</a>	



TEXAS  
INSTRUMENTS

<http://www.ti.com>

© Texas Instruments 2015

FID1

FID2

FID3

PCB Number: PWR724

PCB Rev: A

PCB  
LOGO

Texas Instruments

PCB  
LOGO

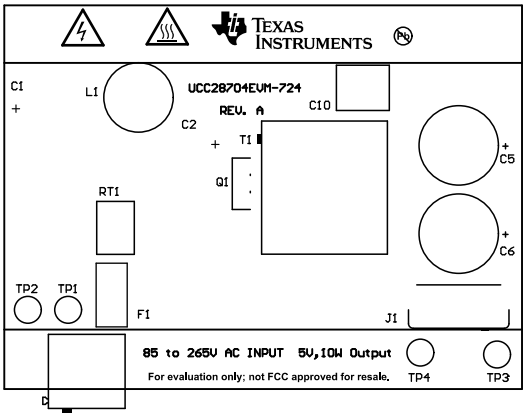
Pb-Free Symbol

PCB  
LOGO

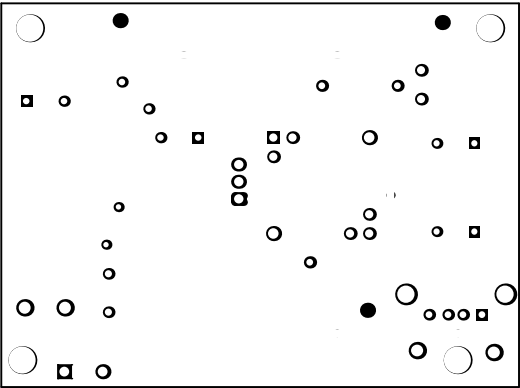
FCC disclaimer



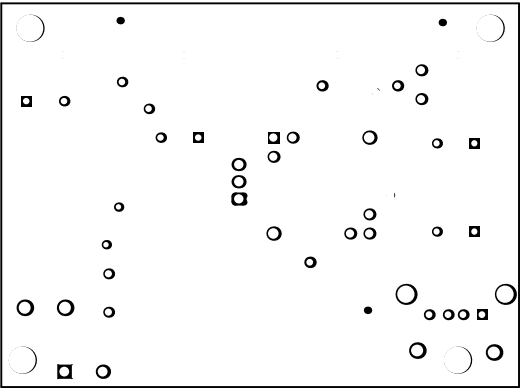
Label Table	
Variant	
001	UCC28704EVM-724



ALL ARTWORK VIEWED FROM TOP SIDE	BOARD #: PWR724	REV: A	SUN REV: Not In VersionControl
LAYER NAME = Top Overlay	TID #: N/A		
PLOT NAME = Top Overlay	GENERATED : 1/26/2016 10:00:38 AM	TEXAS INSTRUMENTS	

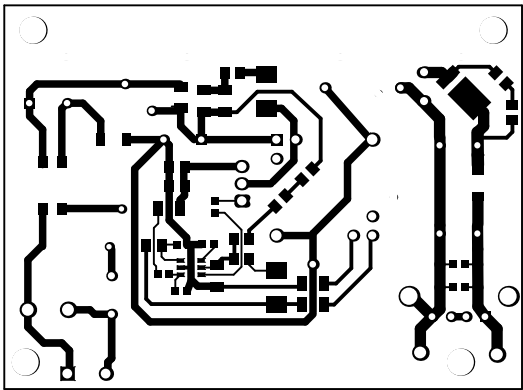


ALL ARTWORK VIEWED FROM TOP SIDE	BOARD #: PWR724	REV: A	SUN REV: Not In VersionControl
LAYER NAME = Top Solder	TID #: N/A		
PLOT NAME = Top Solder Mask	GENERATED : 1/26/2016 10:00:39 AM	TEXAS INSTRUMENTS	

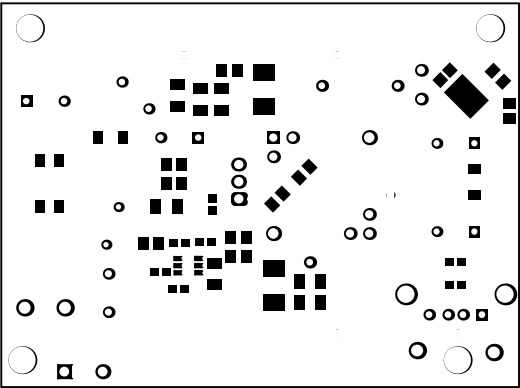


ALL ARTWORK VIEWED FROM TOP SIDE	BOARD #: PWR724	REV: A	SUN REV: Not In VersionControl
LAYER NAME = Top Layer	TID #: N/A		
PLOT NAME = Top Layer	GENERATED : 1/26/2016 10:00:40 AM	TEXAS INSTRUMENTS	

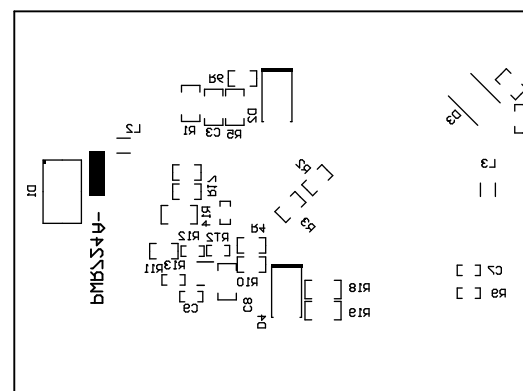
\_\_\_\_\_



ALL ARTWORK VIEWED FROM TOP SIDE	BOARD #: PWR724	REV: A	SUN REV: Not In VersionControl
LAYER NAME = Bottom Layer	TID #: N/A		
PLOT NAME = Bottom Layer	GENERATED : 1/26/2016 10:00:41 AM	TEXAS INSTRUMENTS	

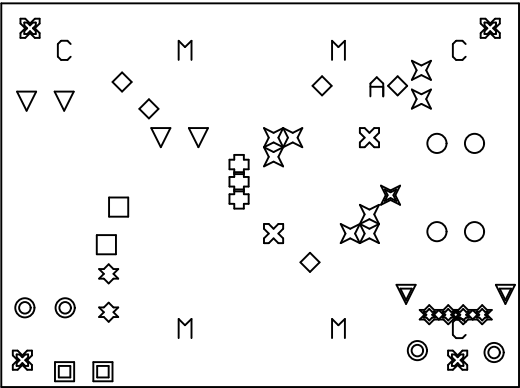


ALL ARTWORK VIEWED FROM TOP SIDE	BOARD #: PWR724	REV: A	SUN REV: Not In VersionControl
LAYER NAME = Bottom Solder	TID #: N/A		
PLOT NAME = Bottom Solder Mask	GENERATED : 1/26/2016 10:00:42 AM	TEXAS INSTRUMENTS	



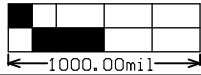
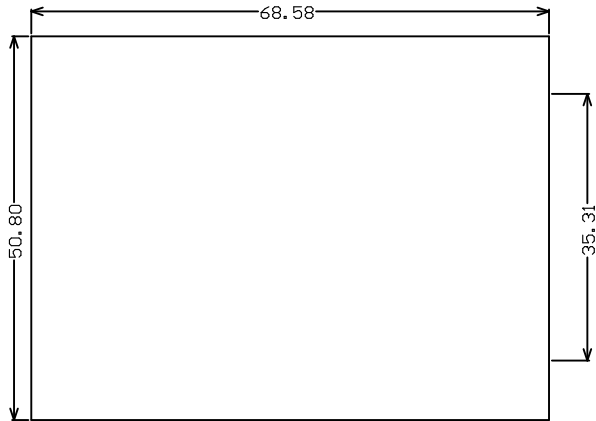
ALL ARTWORK VIEWED FROM TOP SIDE	BOARD #: PWR724	REV: A	SUN REV: Not In VersionControl
LAYER NAME = Bottom Overlay	TID #: N/A		
PLOT NAME = Bottom Overlay	GENERATED : 1/26/2016 10:00:43 AM		TEXAS INSTRUMENTS





Symbol	Quantity	Finished Hole Size	Plated	Hole Type
✕	4	141.73mil (3.600mm)	NPTH	Round
A	1	39.37mil (1.000mm)	NPTH	Slot
C	3	39.37mil (1.000mm)	NPTH	Slot
M	4	39.37mil (1.000mm)	NPTH	Slot
X	1	39.37mil (1.000mm)	NPTH	Slot
□	2	29.53mil (0.750mm)	PTH	Round
○	4	33.46mil (0.850mm)	PTH	Round
▽	4	35.00mil (0.889mm)	PTH	Round
◇	5	35.43mil (0.900mm)	PTH	Round
✱	4	36.22mil (0.920mm)	PTH	Round
✧	2	37.40mil (0.950mm)	PTH	Round
✖	8	43.31mil (1.100mm)	PTH	Round
⊕	3	49.21mil (1.250mm)	PTH	Round
■	2	51.18mil (1.300mm)	PTH	Round
⊗	2	55.12mil (1.400mm)	PTH	Round
⦿	4	63.00mil (1.600mm)	PTH	Round
▼	2	90.55mil (2.300mm)	PTH	Round
	55 Total			

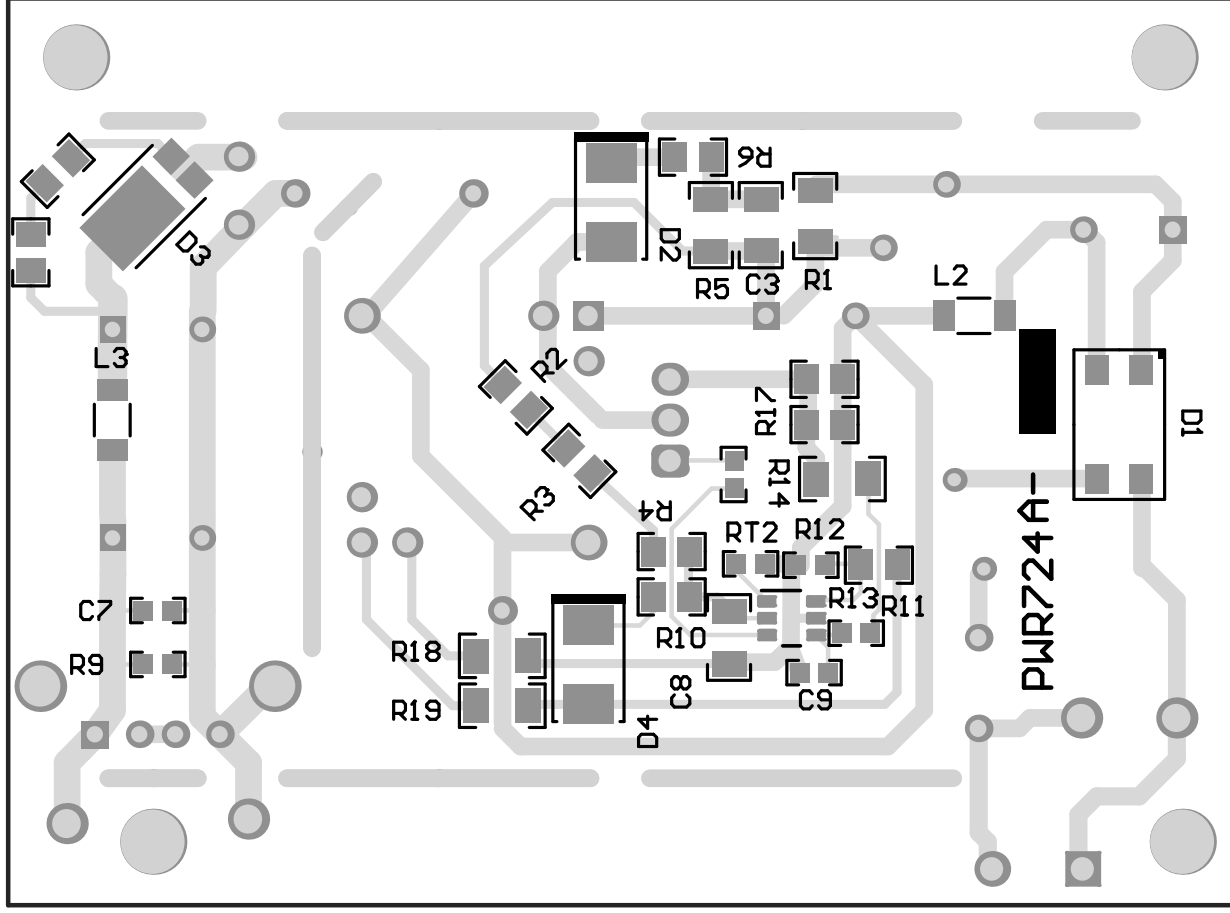
ALL ARTWORK VIEWED FROM TOP SIDE	BOARD #: PWR724	REV: A	SUN REV: Not In VersionControl
LAYER NAME = Drill Drawing	TID #: N/A		
PLOT NAME = Drill Drawing	GENERATED : 1/26/2016 10:00:44 AM	TEXAS INSTRUMENTS	

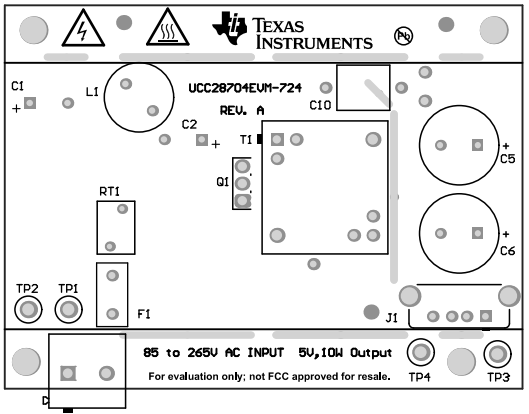


ALL ARTWORK VIEWED FROM TOP SIDE	BOARD #: PWR724	REV: A	SUN REV: Not In VersionControl
LAYER NAME = M2 Board Dimensions	TID #: N/A		
PLOT NAME = Board Dimensions	GENERATED : 1/26/2016 10:00:45 AM	TEXAS INSTRUMENTS	

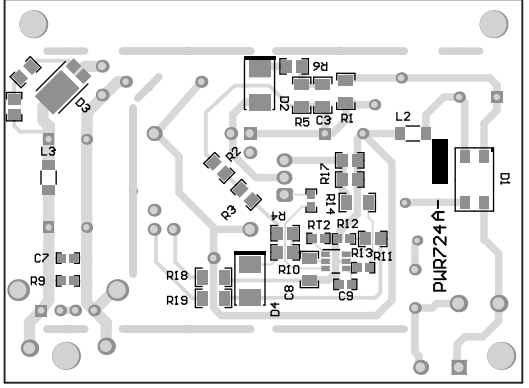


# Bottom Overlay





Top Overlay



usb to serial module



TEXAS  
INSTRUMENTS



UCC28704EVM-724

REV. A

C2

+

T1

D1

RT1

C10

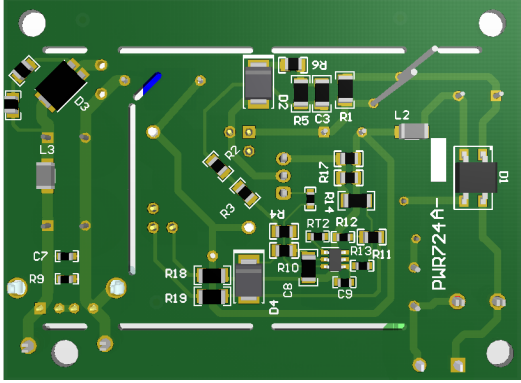
J1

85 to 265V AC INPUT 5V, 10W Output

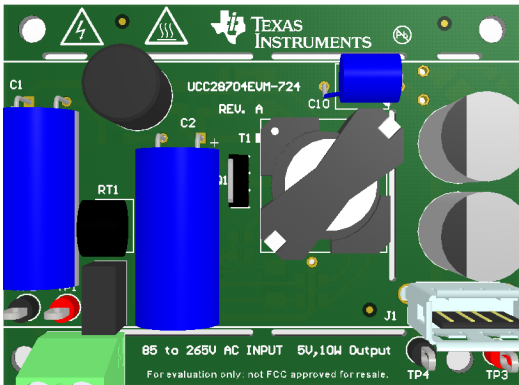
For evaluation only; not FCC approved for resale.

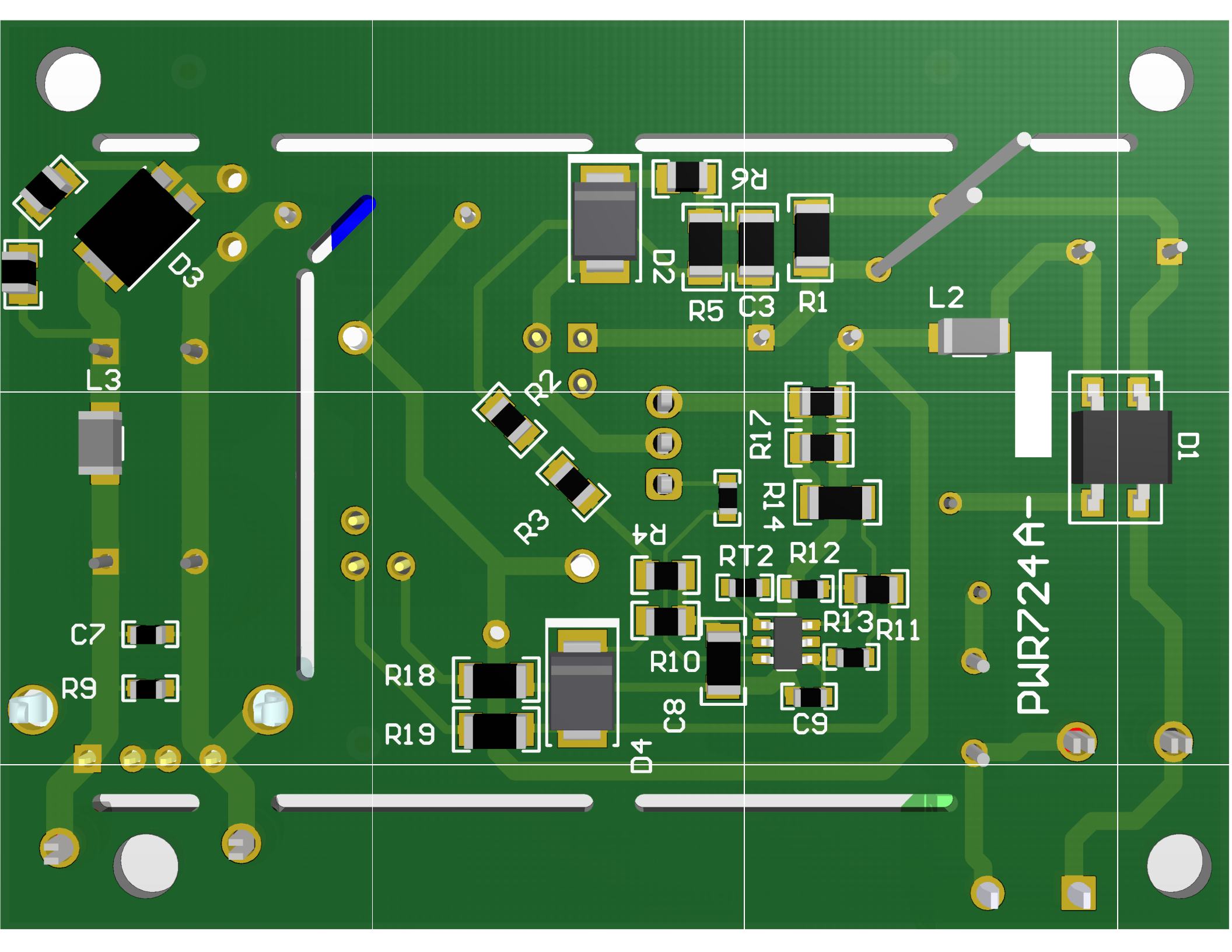
TP4

TP3









D3

L3

C7

R9

R18

R19

D4

C8

R10

R4

R3

R2

R17

R14

RT2

R12

R13

R11

C9

L2

D1

PWR724A-