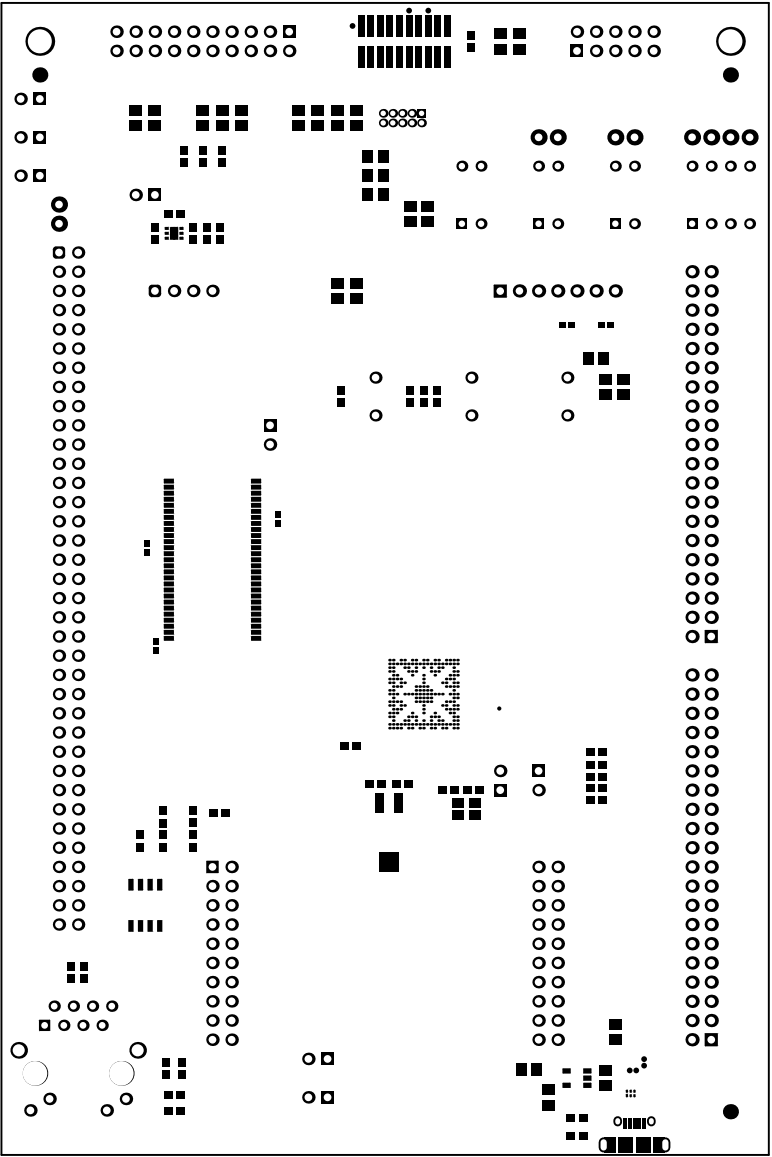
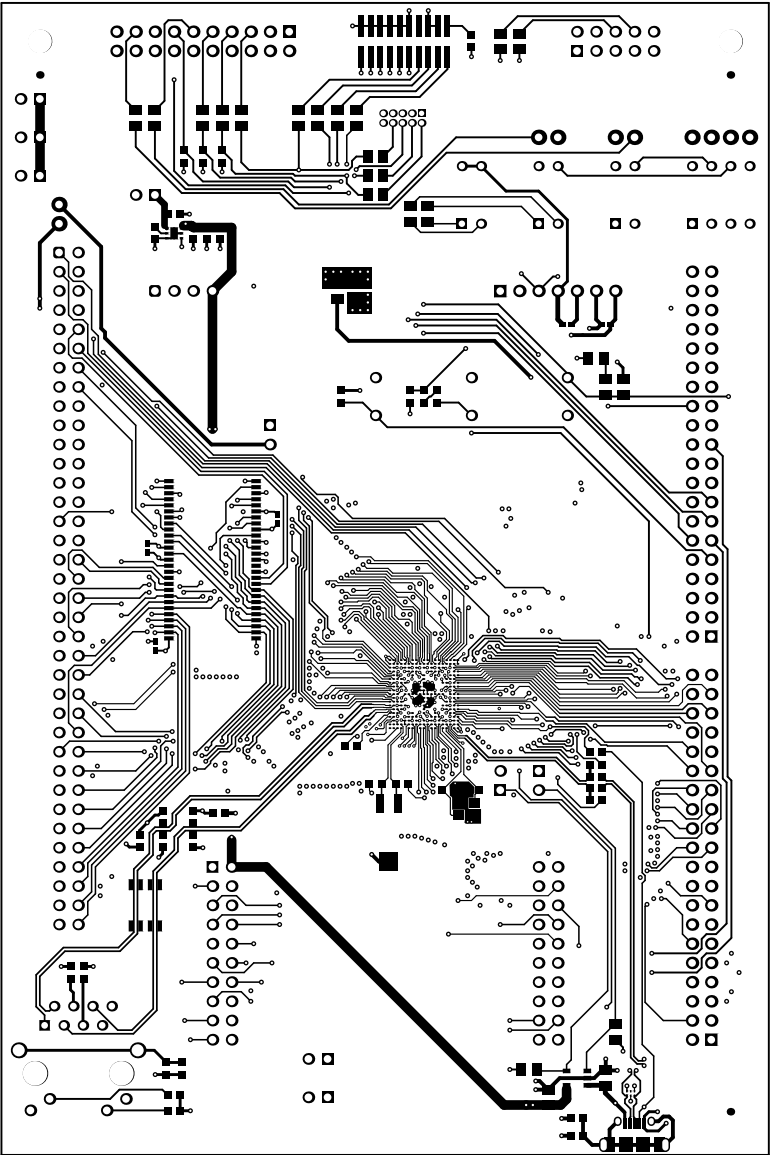


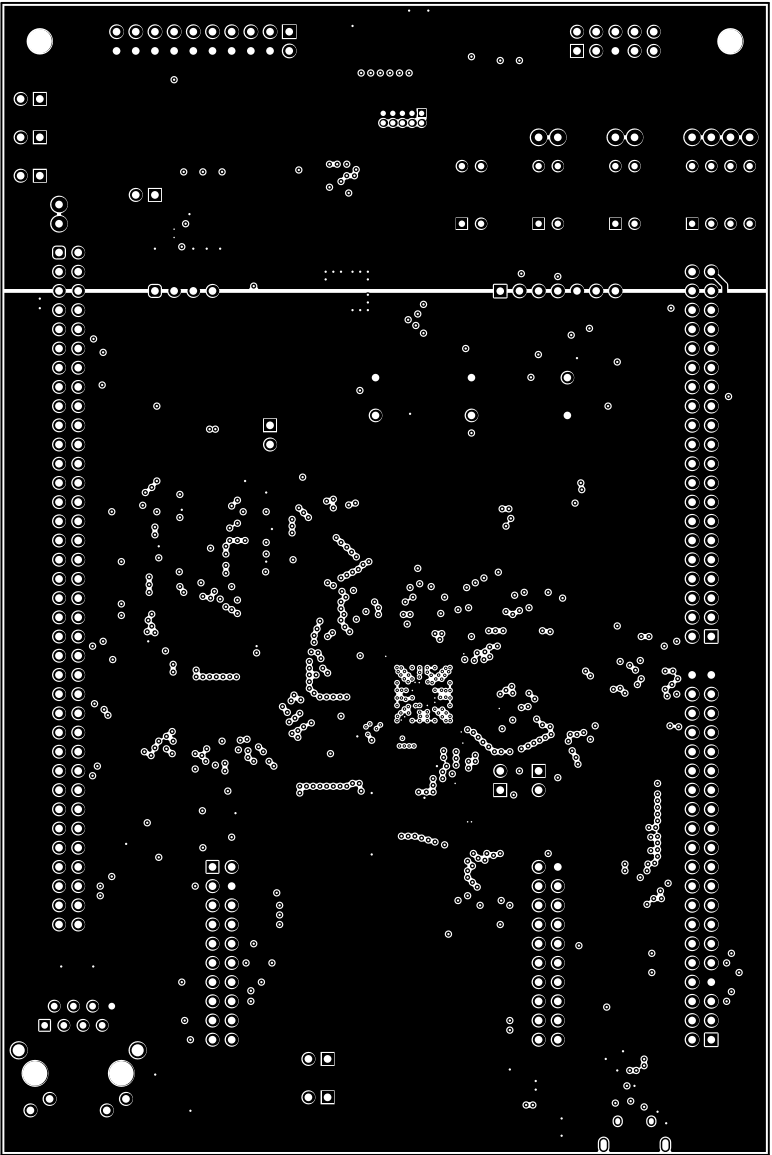
ALL ARTWORK VIEWED FROM TOP SIDE	BOARD #: MCU051	REV: A	SUN REV: Not In VersionControl
LAYER NAME = Top Overlay	TID #: N/A		
PLOT NAME = Top Overlay	GENERATED : 6/13/2018 8:43:59 AM		TEXAS INSTRUMENTS



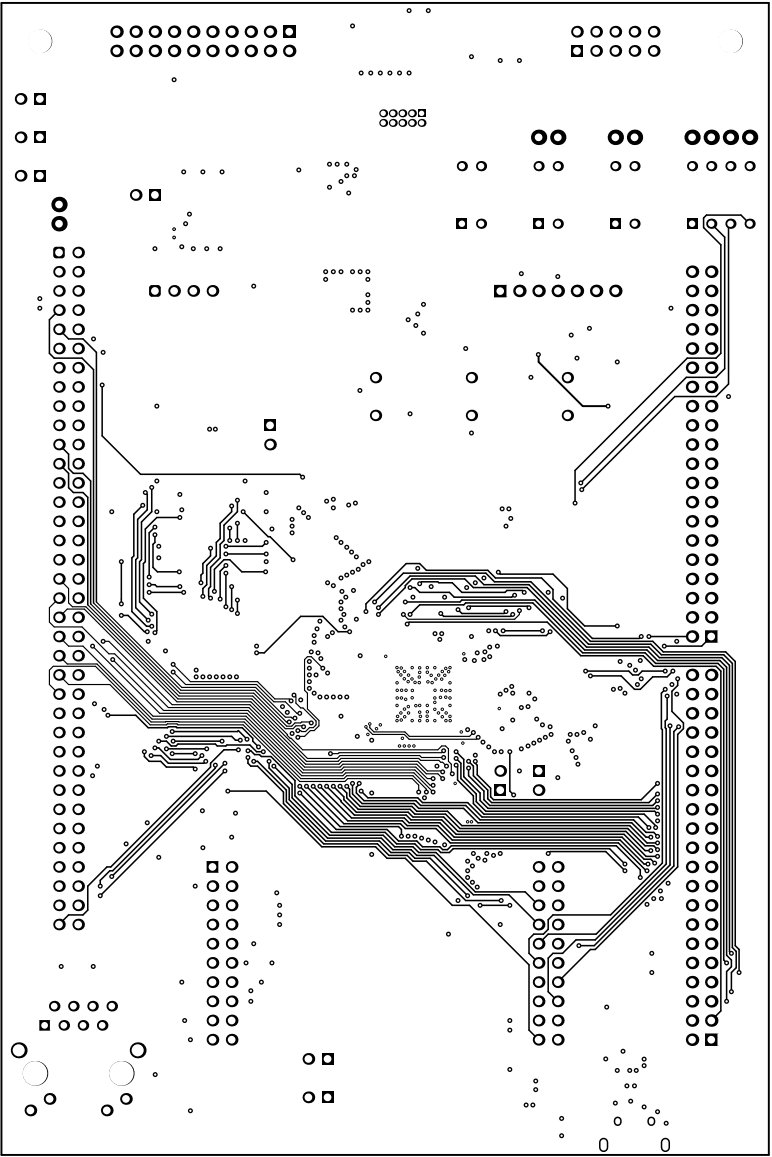
ALL ARTWORK VIEWED FROM TOP SIDE	BOARD #: MCU051	REV: A	SUN REV: Not In VersionControl
LAYER NAME = Top Solder	TID #: N/A		
PLOT NAME = Top Solder Mask	GENERATED : 6/13/2018 8:44:00 AM	TEXAS INSTRUMENTS	



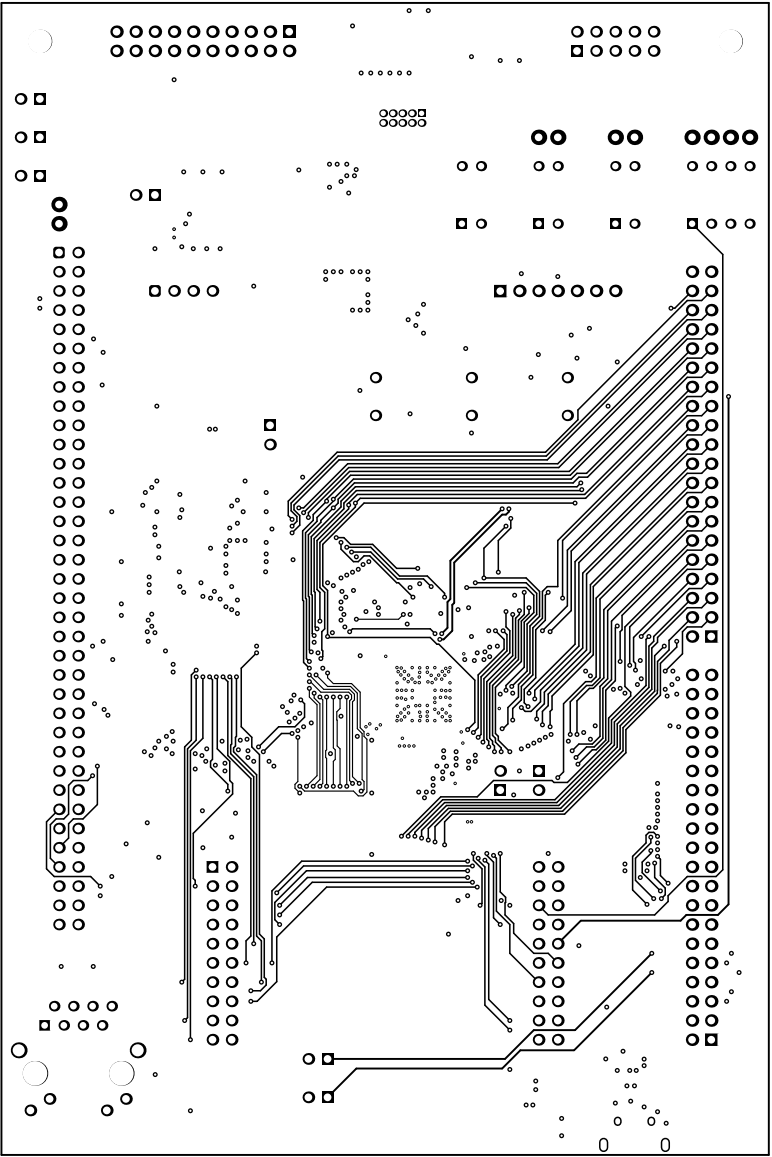
ALL ARTWORK VIEWED FROM TOP SIDE	BOARD #: MCU051	REV: A	SUN REV: Not In VersionControl
LAYER NAME = Top Layer	TID #: N/A		
PLOT NAME = Top Layer	GENERATED : 6/13/2018 8:44:01 AM	TEXAS INSTRUMENTS	



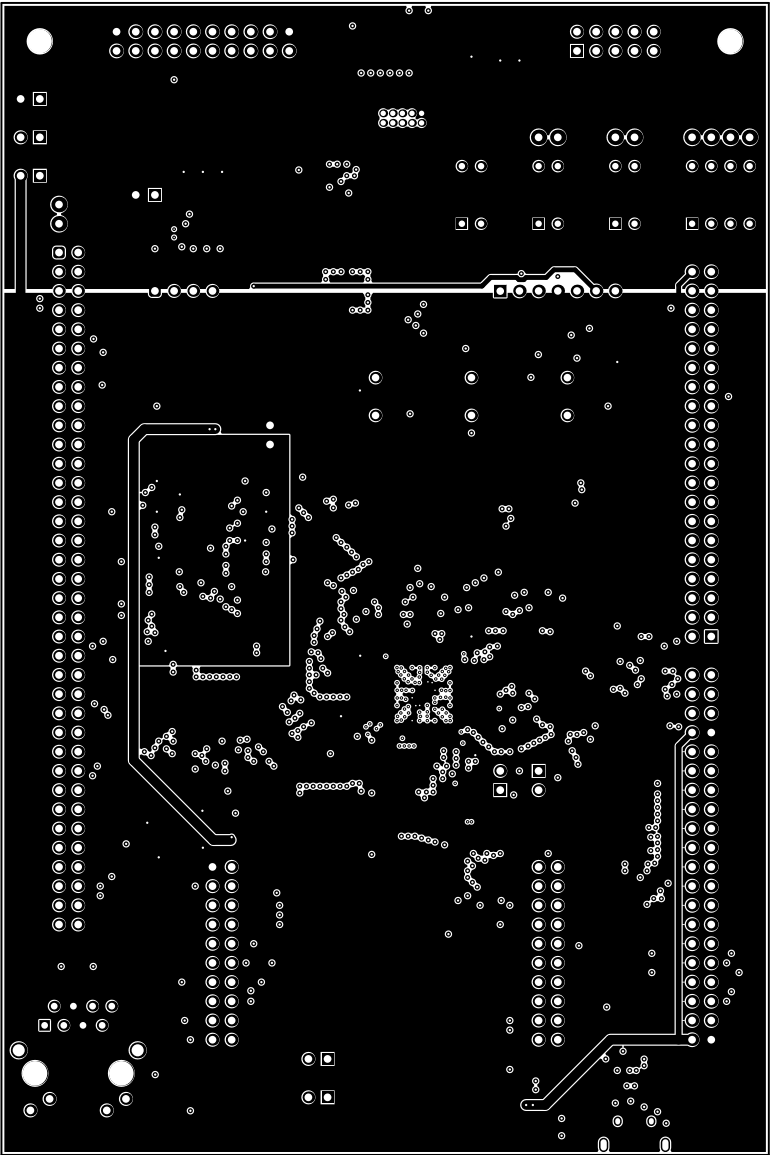
ALL ARTWORK VIEWED FROM TOP SIDE	BOARD #: MCU051	REV: A	SUN REV: Not In VersionControl
LAYER NAME = Signal Layer 1	TID #: N/A		
PLOT NAME = Signal Layer 1	GENERATED : 6/13/2018 8:44:03 AM	TEXAS INSTRUMENTS	



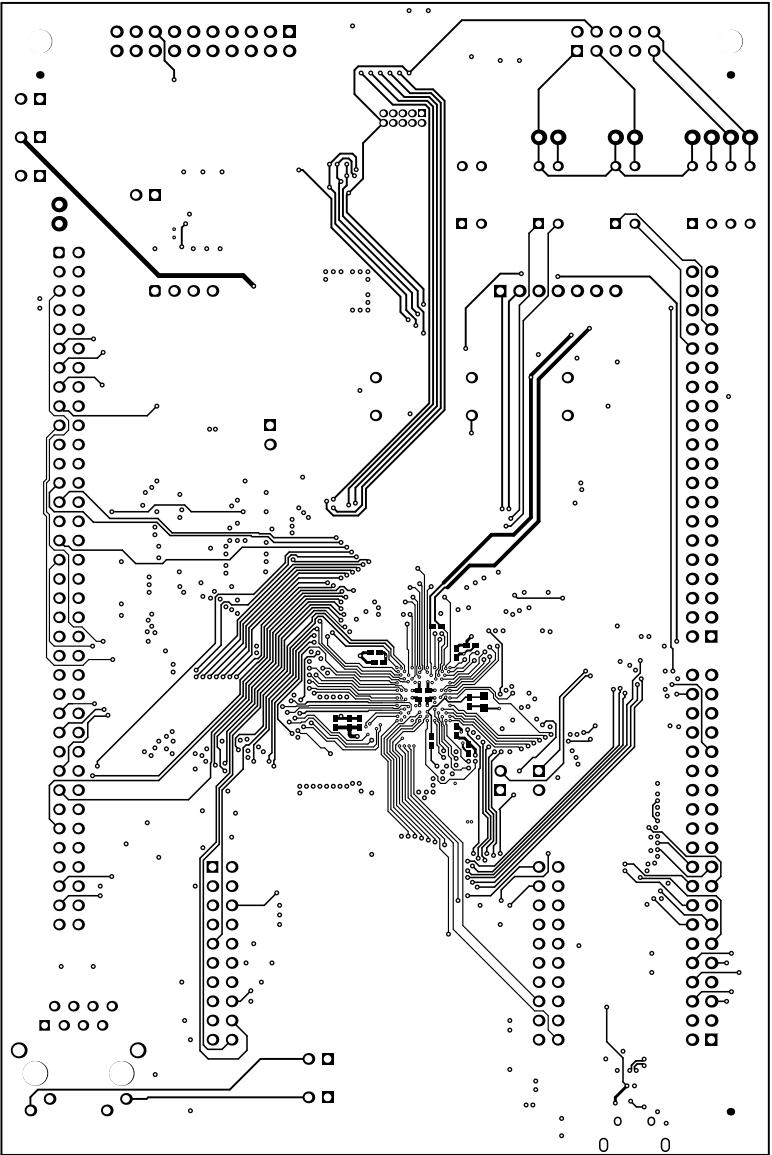
ALL ARTWORK VIEWED FROM TOP SIDE	BOARD #: MCU051	REV: A	SUN REV: Not In VersionControl
LAYER NAME = Signal Layer 2	TID #: N/A		
PLOT NAME = Signal Layer 2	GENERATED : 6/13/2018 8:44:04 AM	TEXAS INSTRUMENTS	



ALL ARTWORK VIEWED FROM TOP SIDE	BOARD #: MCU051	REV: A	SUN REV: Not In VersionControl
LAYER NAME = Signal Layer 3	TID #: N/A		
PLOT NAME = Signal Layer 3	GENERATED : 6/13/2018 8:44:05 AM	TEXAS INSTRUMENTS	

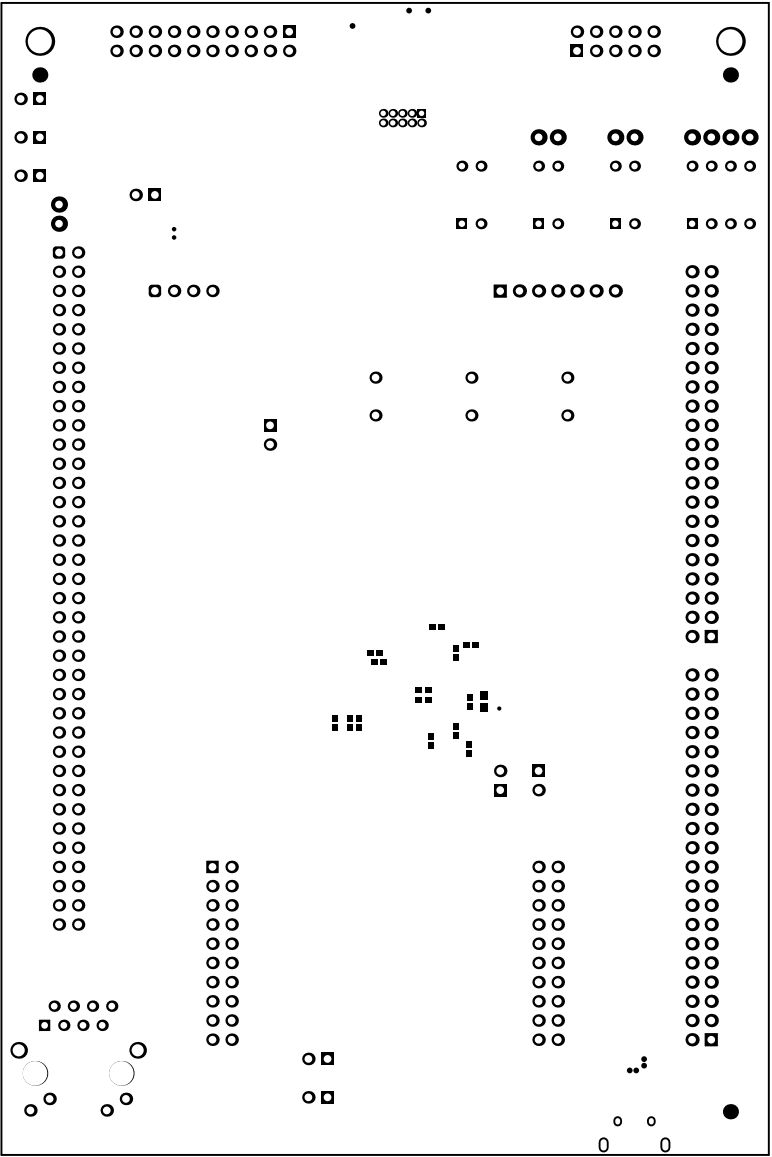


ALL ARTWORK VIEWED FROM TOP SIDE	BOARD #: MCU051	REV: A	SUN REV: Not In VersionControl
LAYER NAME = Signal Layer 4	TID #: N/A		
PLOT NAME = Signal Layer 4	GENERATED : 6/13/2018 8:44:06 AM	TEXAS INSTRUMENTS	

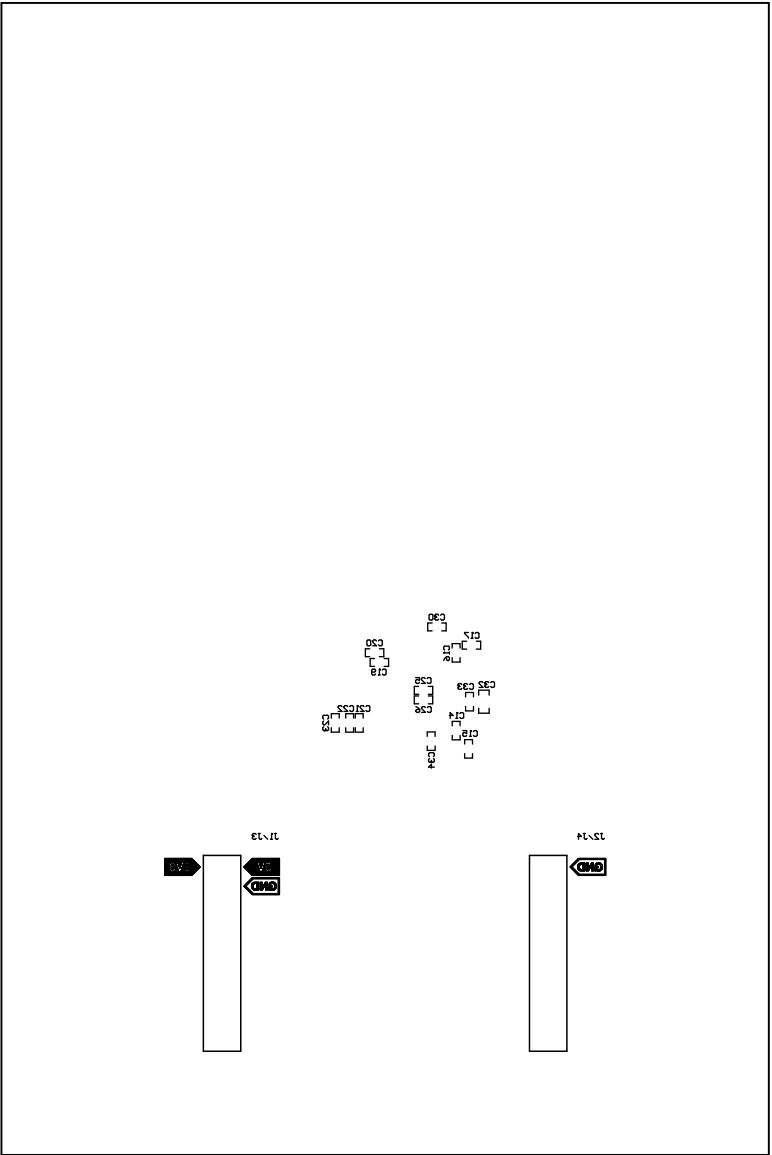


ALL ARTWORK VIEWED FROM TOP SIDE	BOARD #: MCU051	REV: A	SUN REV: Not In VersionControl
LAYER NAME = Bottom Layer	TID #: N/A		
PLOT NAME = Bottom Layer	GENERATED : 6/13/2018 8:44:07 AM	TEXAS INSTRUMENTS	

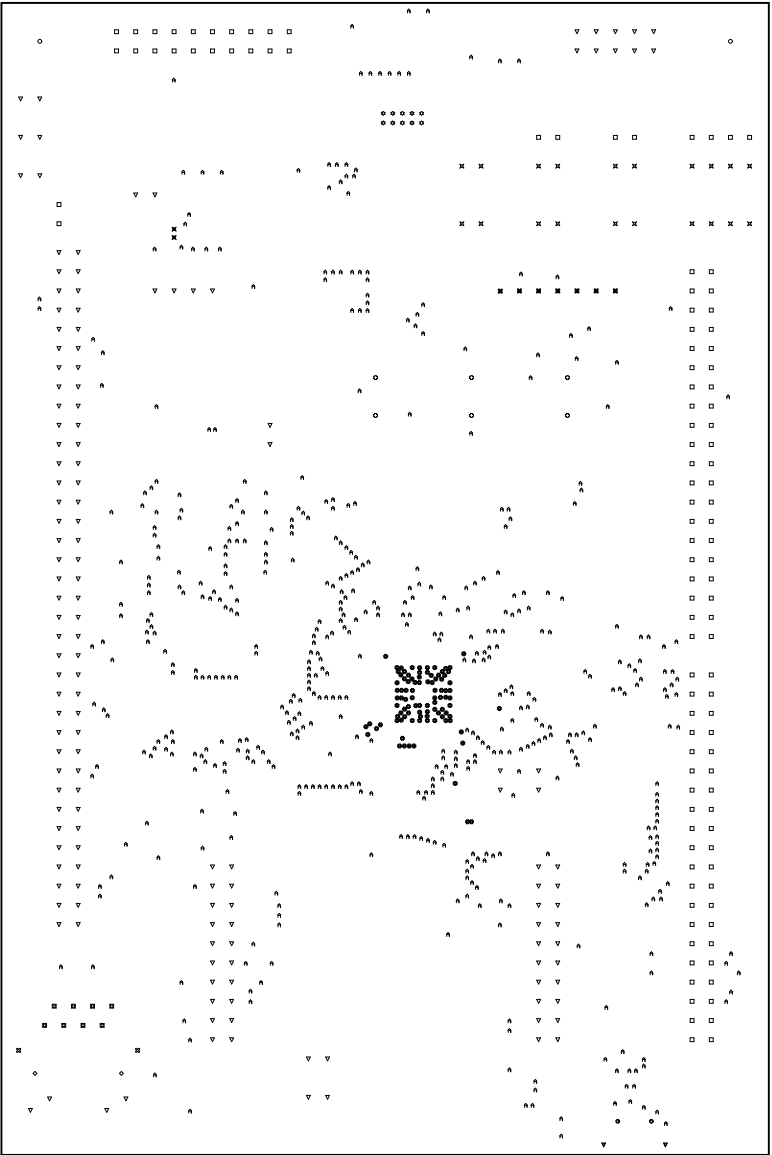




ALL ARTWORK VIEWED FROM TOP SIDE	BOARD #: MCU051	REV: A	SUN REV: Not In VersionControl
LAYER NAME = Bottom Solder	TID #: N/A		
PLOT NAME = Bottom Solder Mask	GENERATED : 6/13/2018 8:44:08 AM	TEXAS INSTRUMENTS	



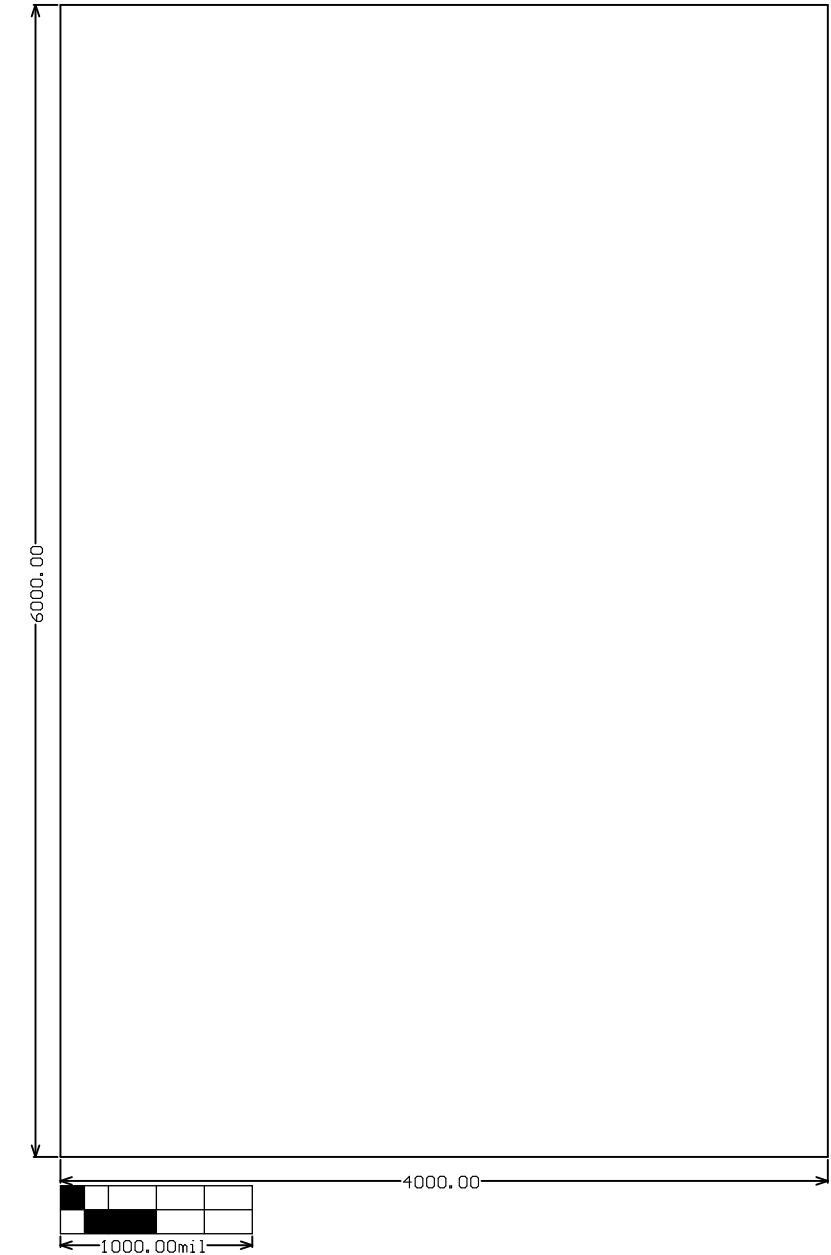
ALL ARTWORK VIEWED FROM TOP SIDE	BOARD #: MCU051	REV: A	SUN REV: Not In VersionControl
LAYER NAME = Bottom Overlay	TID #: N/A		
PLOT NAME = Bottom Overlay	GENERATED : 6/13/2018 8:44:10 AM	TEXAS INSTRUMENTS	



Symbol	Quantity	Finished Hole Size	Plated	Hole Type	Drill Layer Pair	Hole Tolerance
○	2	125.00mil (3.175mm)	NPTH	Round	Top Layer - Bottom Layer	±/±1.97mil
◇	2	127.95mil (3.250mm)	NPTH	Round	Top Layer - Bottom Layer	
⊗	2	7.87mil (0.200mm)	PTH	Round	Top Layer - Bottom Layer	
⊕	95	8.00mil (0.203mm)	PTH	Round	Top Layer - Bottom Layer	
⌘	524	12.00mil (0.305mm)	PTH	Round	Top Layer - Bottom Layer	
⊛	10	27.95mil (0.710mm)	PTH	Round	Top Layer - Bottom Layer	
⊗	20	33.47mil (0.850mm)	PTH	Round	Top Layer - Bottom Layer	
⊕	8	35.04mil (0.890mm)	PTH	Round	Top Layer - Bottom Layer	
⊕	6	39.37mil (1.000mm)	PTH	Round	Top Layer - Bottom Layer	
⊗	7	39.37mil (1.000mm)	PTH	Round	Top Layer - Bottom Layer	
□	110	40.00mil (1.016mm)	PTH	Round	Top Layer - Bottom Layer	
▽	148	40.16mil (1.020mm)	PTH	Round	Top Layer - Bottom Layer	
⊗	2	62.99mil (1.600mm)	PTH	Round	Top Layer - Bottom Layer	
○	2	25.59mil (0.650mm)	PTH	Slot	Top Layer - Bottom Layer	
▽	2	32.48mil (0.825mm)	PTH	Slot	Top Layer - Bottom Layer	
940 Total						

Slot definitions : Routed Path Length = Calculated from tool start centre position to tool end centre position.  
Hole Length = Routed Path Length + Tool Size + Slot length as defined in the PCB layout

ALL ARTWORK VIEWED FROM TOP SIDE	BOARD #: MCU051	REV: A	SUN REV: Not In VersionControl
LAYER NAME = Drill Drawing	TID #: N/A		
PLOT NAME = Drill Drawing	GENERATED : 6/13/2018 8:44:11 AM	TEXAS INSTRUMENTS	



ALL ARTWORK VIEWED FROM TOP SIDE	BOARD #: MCU051	REV: A	SUN REV: Not In VersionControl
LAYER NAME = M2 Board Dimensions	TID #: N/A		
PLOT NAME = Board Dimensions	GENERATED : 6/13/2018 8:44:14 AM		TEXAS INSTRUMENTS