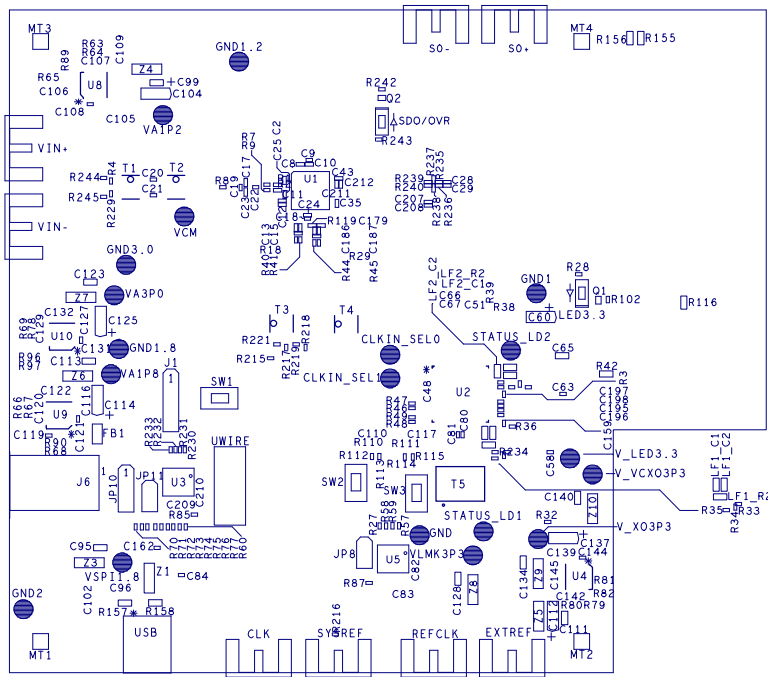


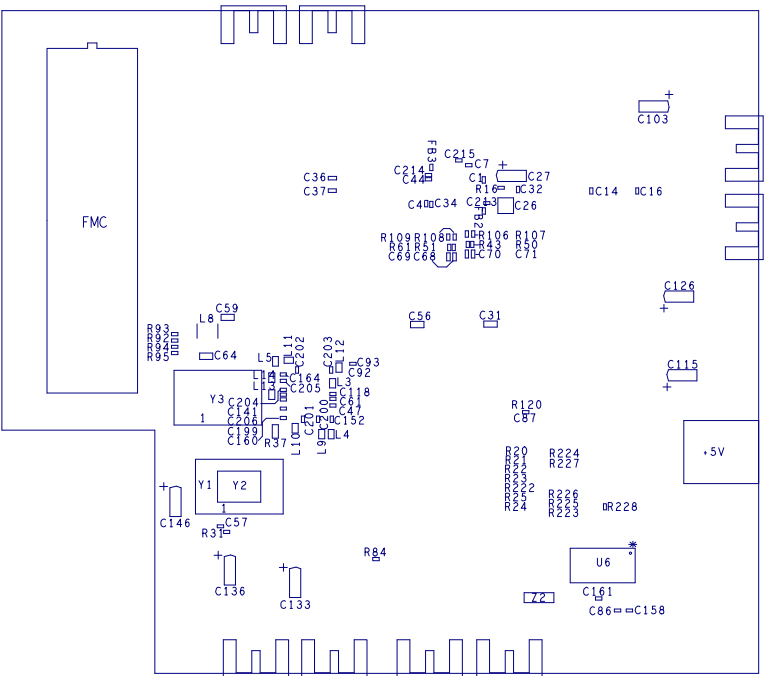
THIS DRAWING IS INTENDED TO HELP IN THE ASSEMBLY OF THE DESIGN

1. REFER TO ODB++ FILE FOR SPECIFIC COMPONENT LOCATION INFORMATION.
2. FINISHED ASSEMBLY MUST BE RoHS COMPLIANT AND LEAD FREE.
3. USE WATER SOLUBLE FLUX DURING BOARD ASSEMBLY.
4. IPC-A-610 / ACCEPTABILITY OF ELECTRONIC ASSEMBLIES, CLASS 2, CURRENT REVISION.


REVISIONS			
REV	DESCRIPTION	DATE	APPROVED



ASSEMBLY TOP



ASSEMBLY BOTTOM

UNLESS OTHERWISE SPECIFIED	SIGNATURES	DATE	<div> TEXAS INSTRUMENTS DALLAS TX.</div>			
DIMENSIONS ARE IN INCHES TOLERANCES ON: 2 PL DECIMALS +/- .01 3 PL DECIMALS +/- .005 ANGLES ° FRACTIONS 1/16	JV SMITH	07-20-15	ASSEMBLY DRAWING , ADC31JB58 EVM			
	J CARNES	07-20-15	SIZE B	FSCM NO	DWG NO	REV B
	DO NOT SCALE DRAWING		SCALE			SHEET 1 OF 1