

1. The netname "VCC_I3V" represents connection to the +1.5V digital power plane.
2. The netname "VCC_25V" represents connection to the +2.5V digital power plane.
3. The netname "VCC_33V" represents connection to the +3.3V digital power plane.
4. The netname "GND" represents connection to the ground plane.
5. A "6" suffix on a signal plane indicates an active low signal.
6. All components with designators "U", "Q", and "D" are electrostatic discharge sensitive.
7. All resistor values are in ohms unless otherwise specified.
8. Capacitor values in microfarads unless otherwise specified.
9. Always indicate modifications are noted by dashed out lines.

HIGHEST REFERENCE DESIGNATORS USED						
BT	C287	D15	FB11	H1	J17	L10
R264	R44	RP10	SW4	TP32	U23	Y5

J10 1-2
J5 2-3
J3 2-3, 5-6, 8-9, 11-12, 14-15

B: Update to replace ECE 32 bit buffer (U20) and add SPI Config Flash Devices (U24 and U27) to DLPC410

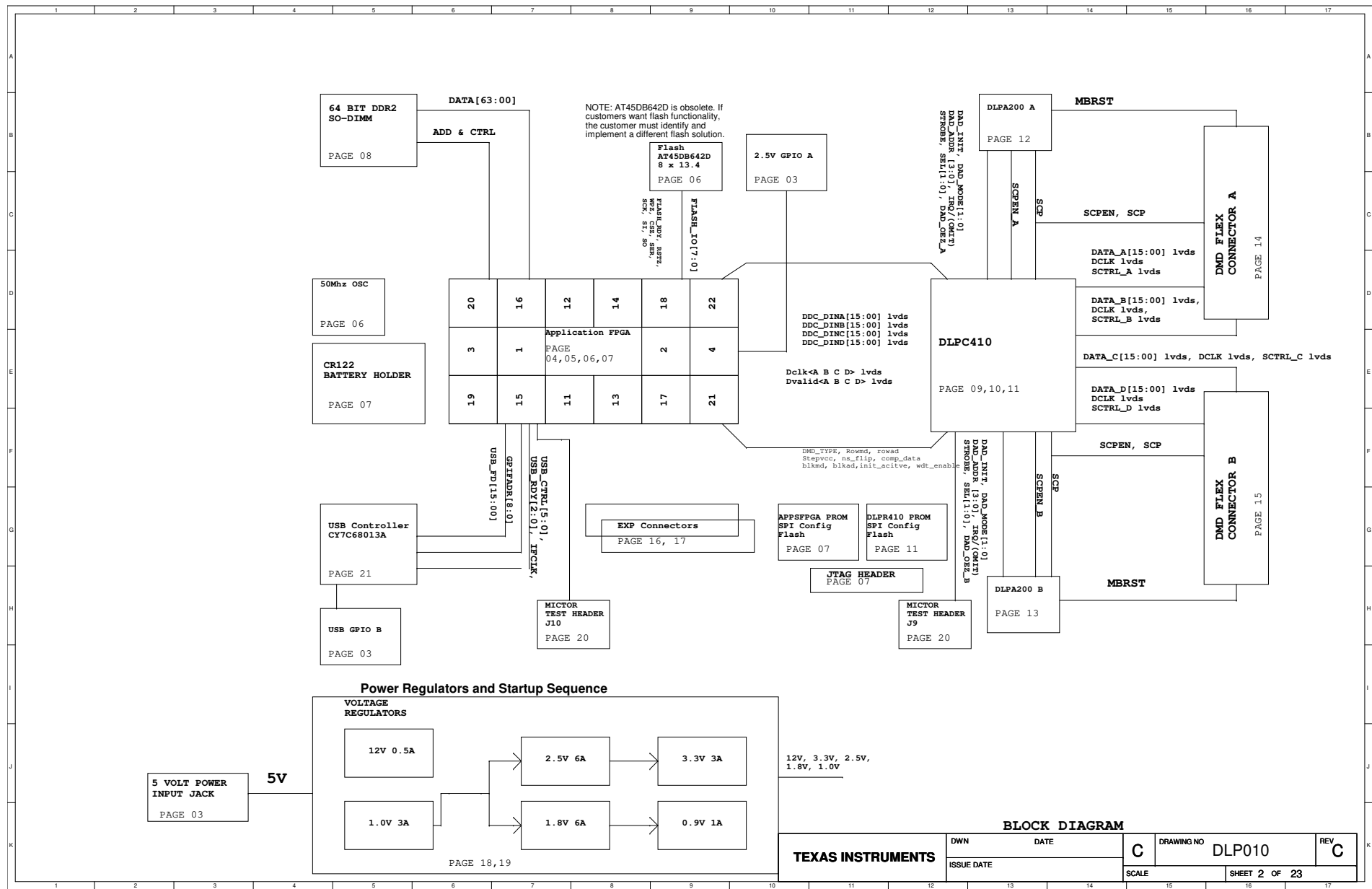
- [illegible]

COMPUTER GENERATED DRAWING. DO NOT REVISE MANUALLY			
REVISION			
REV	DESCRIPTION	DATE	APPROVED
A	Initial Release: based on 2510299 Rev D.	06/17/06	
B	See Revisions Section for Details	03/23/23	
C	See Revisions Section for Details	05/01/23	

TITLE PAGE	-	1
BLOCK DIAGRAM	-	2
UI CONNECTORS	-	3
APPS FPGA 1	-	4
APPS FPGA 2	-	5
APPS FPGA 3	-	6
APPS FPGA 4	-	7
DOR2 SO-DIMM	-	8
DLPC410 1	-	9
DLPC410 2	-	10
DLPC410 3	-	11
DLPA200 A	-	12
DLPA200 B	-	13
DMD FLEX A	-	14
DMD FLEX B	-	15
EXP CONNECTOR 1	-	16
EXP CONNECTOR 2	-	17
POWER 1	-	18
POWER 2	-	19
TEST HEADERS	-	20
USB CONTROLLER	-	21
UNUSED PINS	-	22

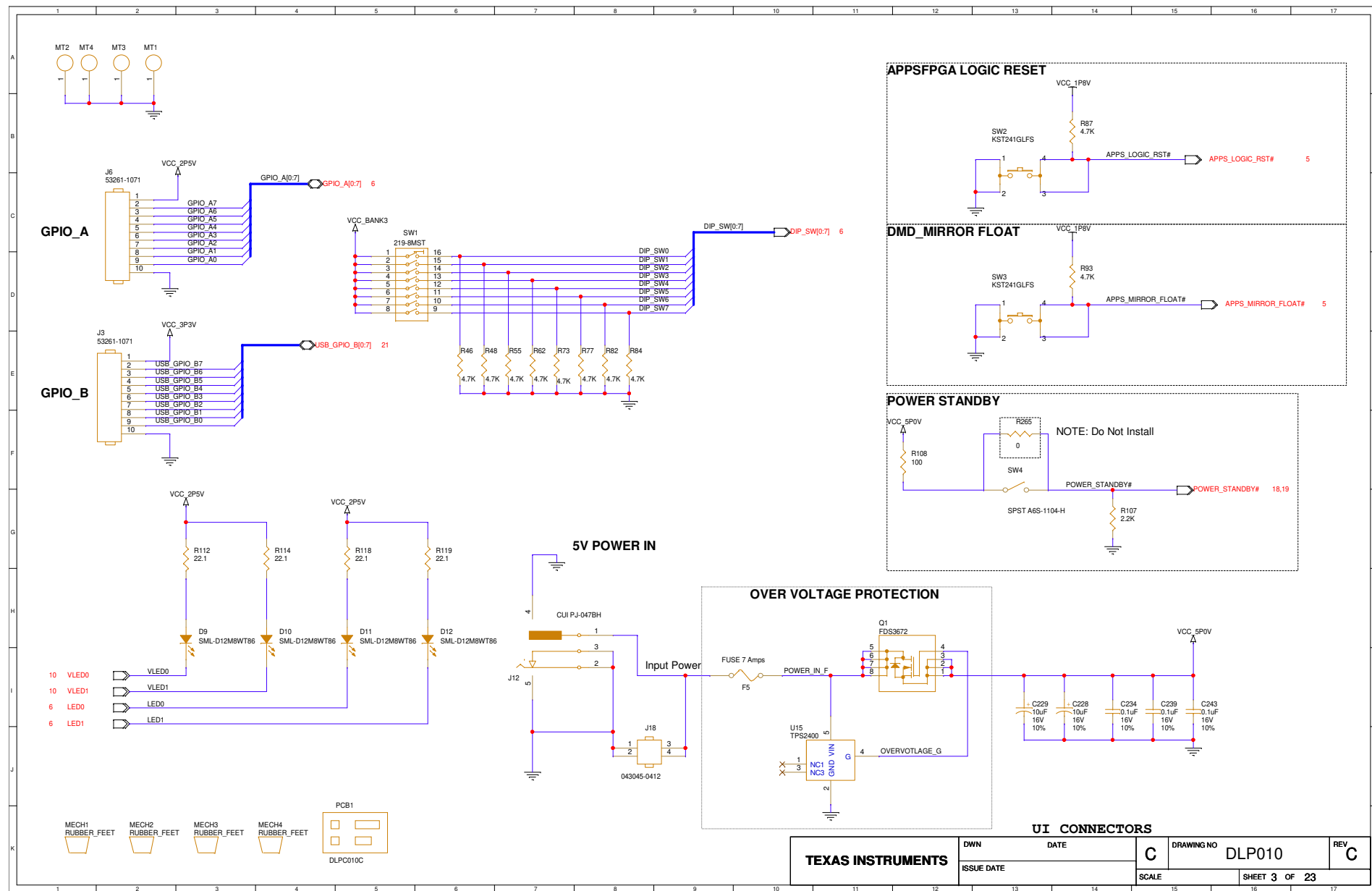
		OWN	Mike McCormick	DATE	3/23/23	TEXAS INSTRUMENTS (C) COPYRIGHT 2023 TEXAS INSTRUMENTS ALL RIGHTS RESERVED	
		MGMT	Ben Lee	3/23/23			
		SYST	Mike McCormick	3/23/23			
		PRG	Carey Ritchey	3/23/23			
				3/23/23			
2509485	0314CP					TITLE	ESD, DLP010C, DLPICR410 Controller Board Schematic
NEXT ASSY	USED ON	SA	3/23/23			DRAWING NO	DLP010
APPLICATION				GW			REV
				SCALE	1 SHEET 1 of 22		

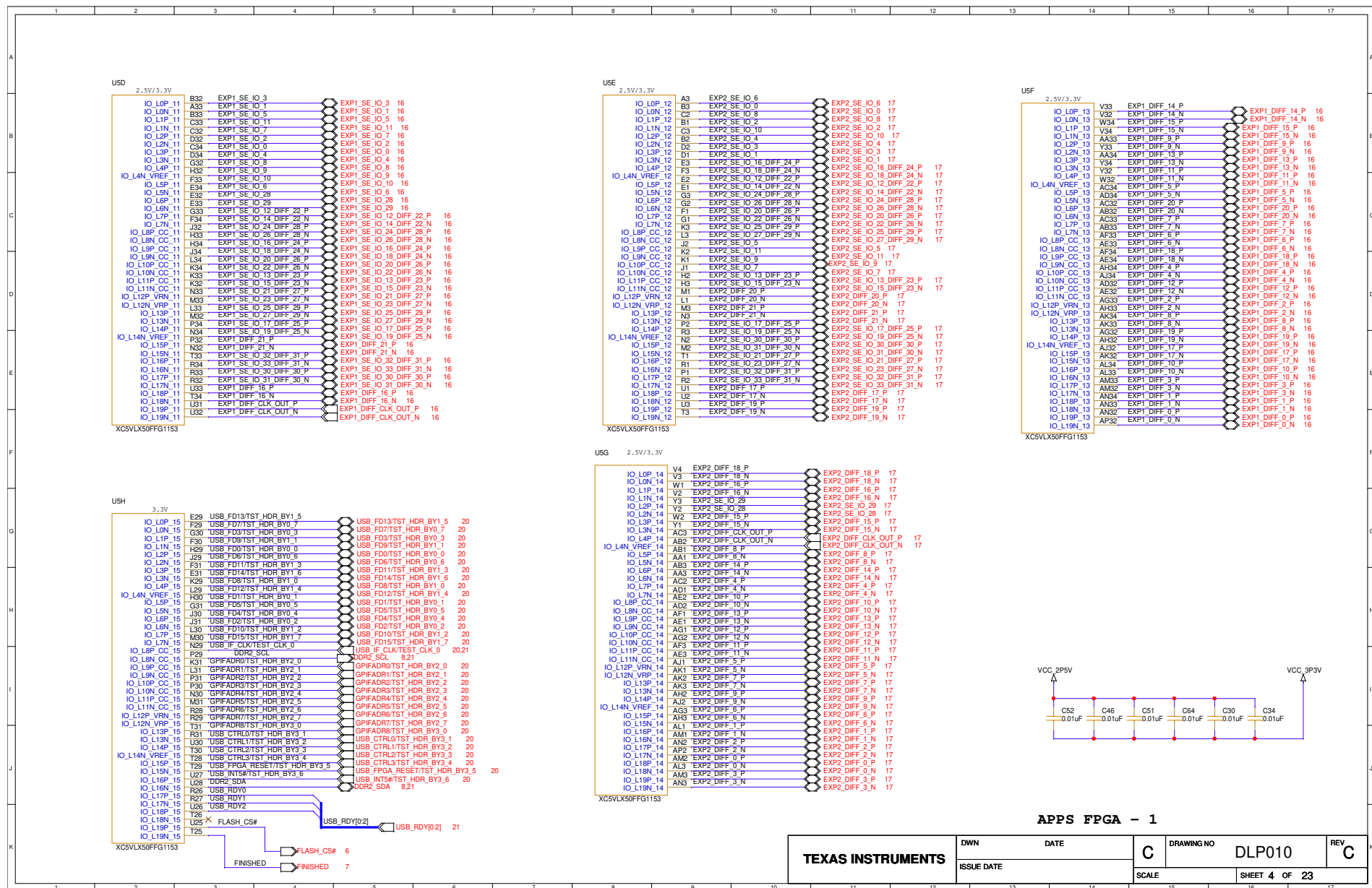
The logo features a blue circle with a thick outline. Inside the circle is a large, bold, black letter 'D'. To the right of the circle are the letters 'L' and 'P' in the same bold, black font. A registered trademark symbol (®) is located at the top right of the 'P'. Below the 'DLP' text is a thin horizontal line. Underneath the line, the words 'TEXAS INSTRUMENTS' are written in a bold, black, sans-serif font.

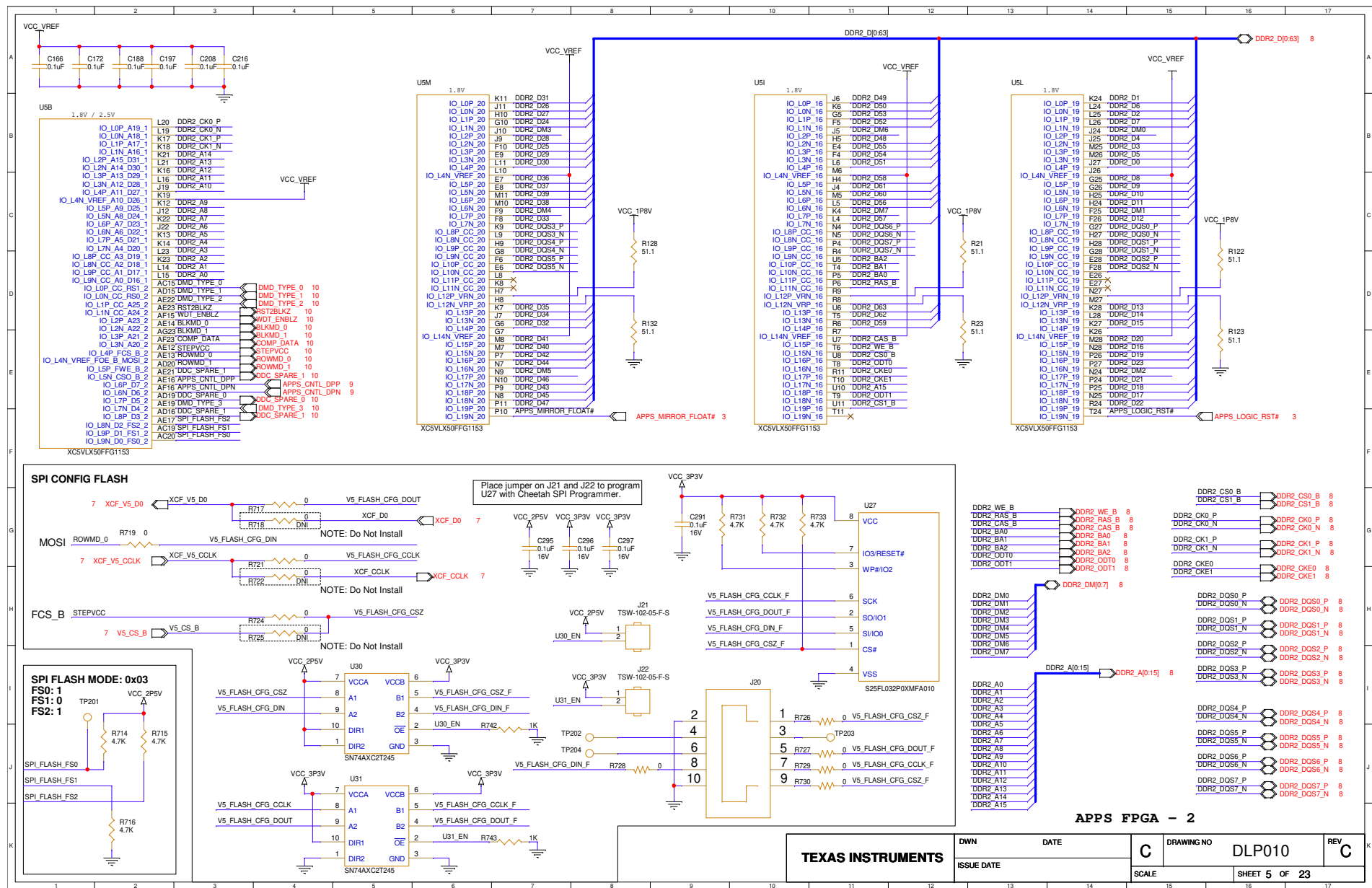


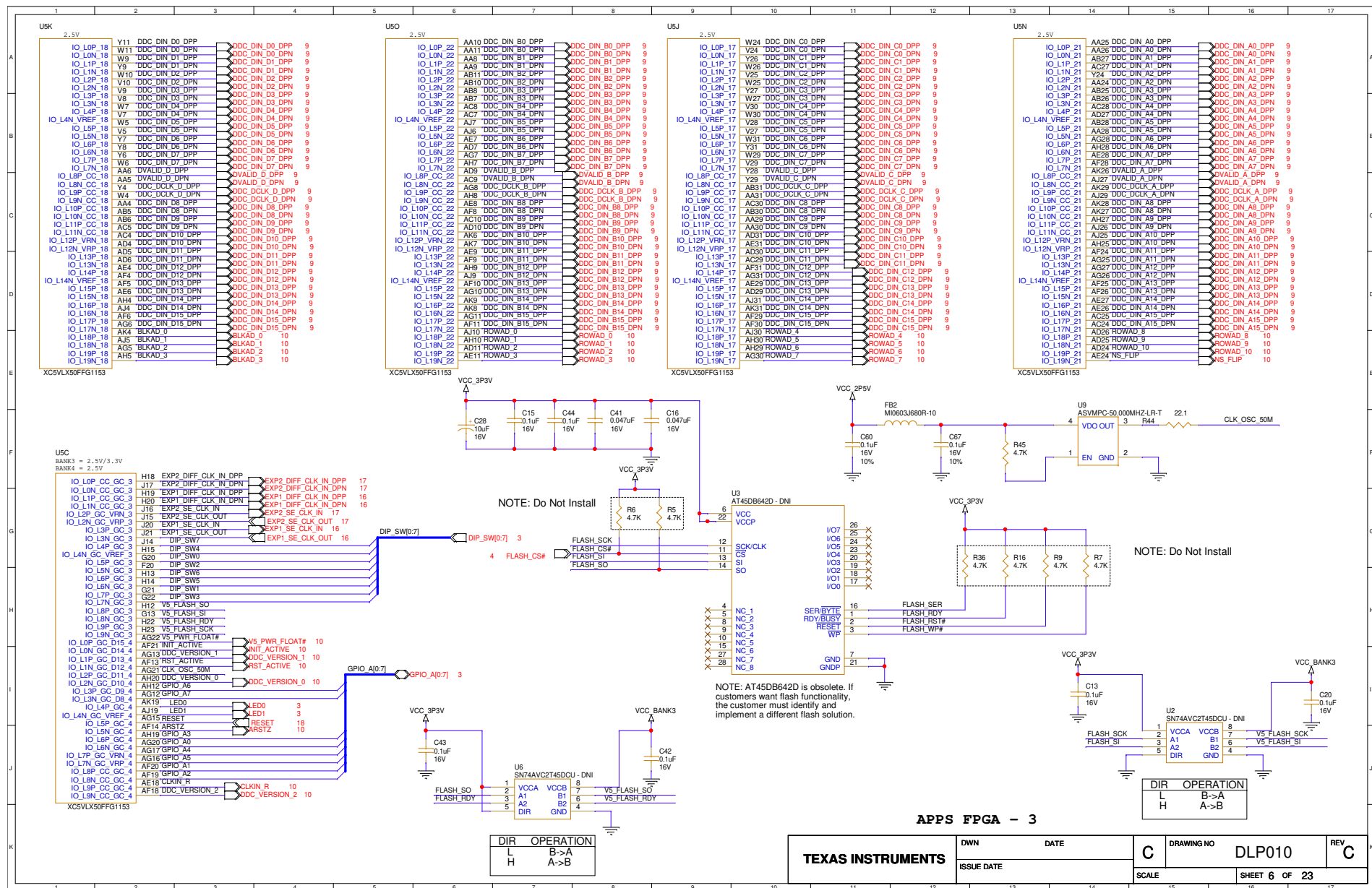
BLOCK DIAGRAM

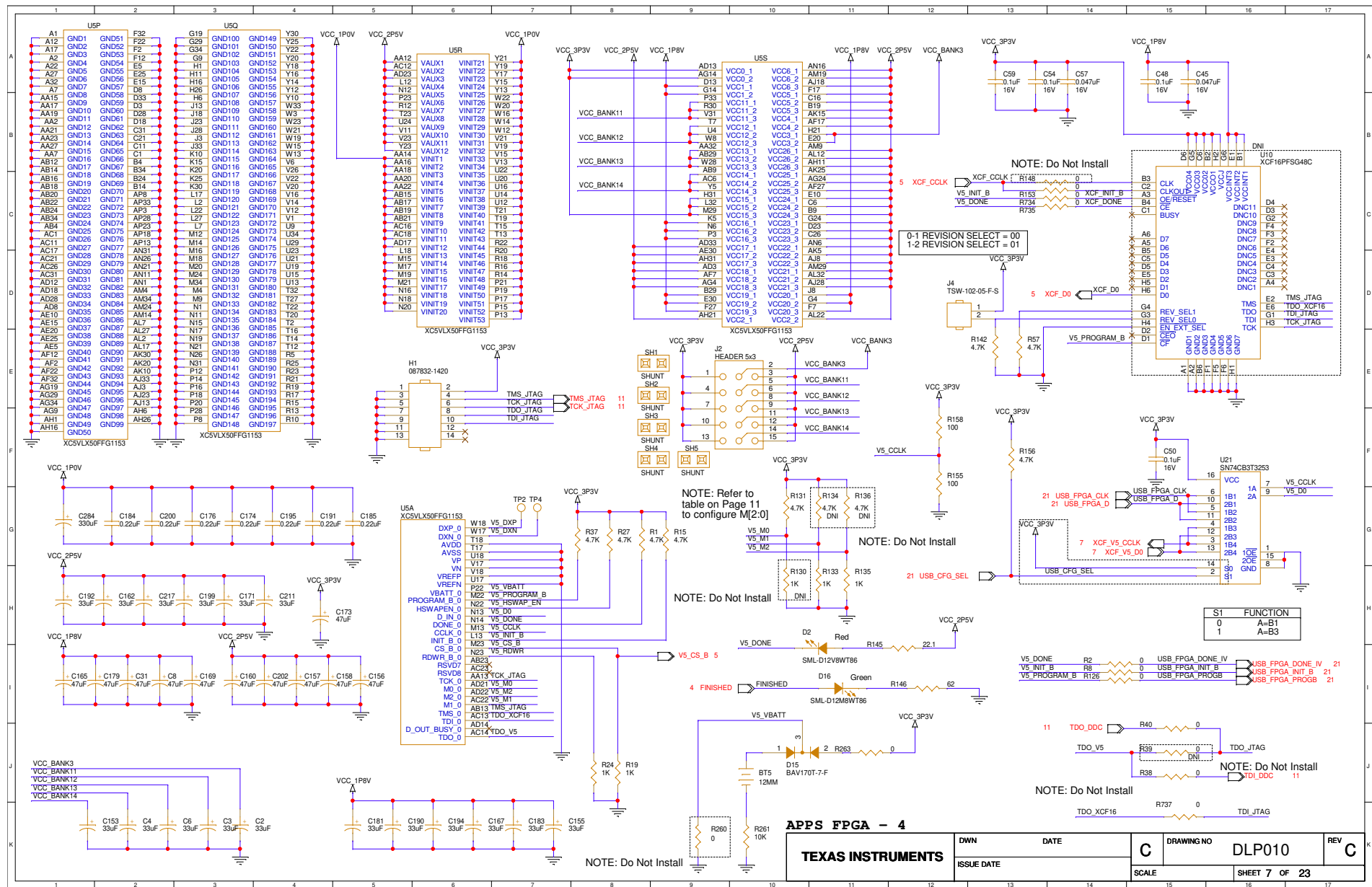
TEXAS INSTRUMENTS	DWN	DATE	C	DRAWING NO DLP010	REV C
	ISSUE DATE				
	SCALE			SHEET 2 OF 23	

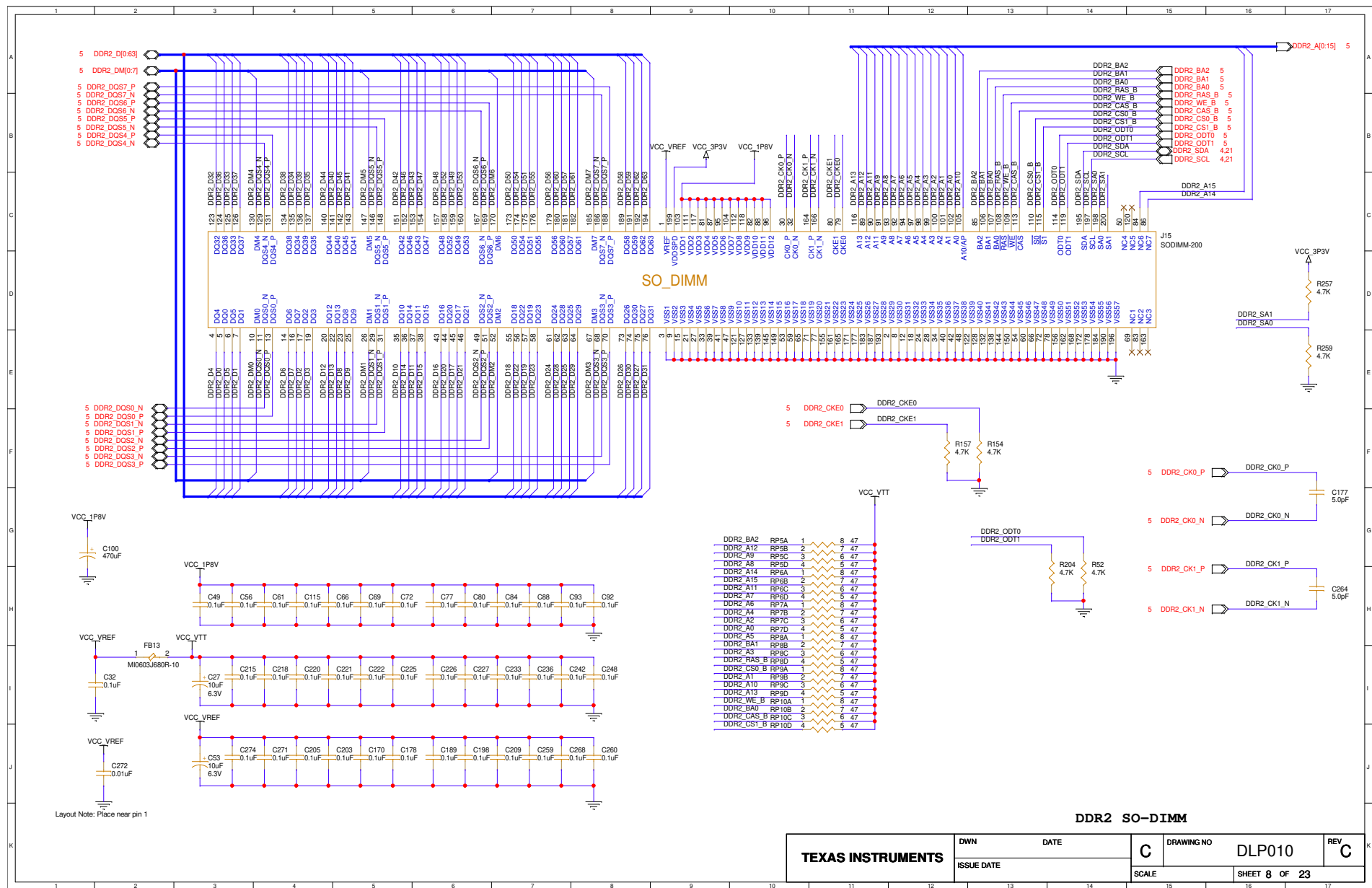


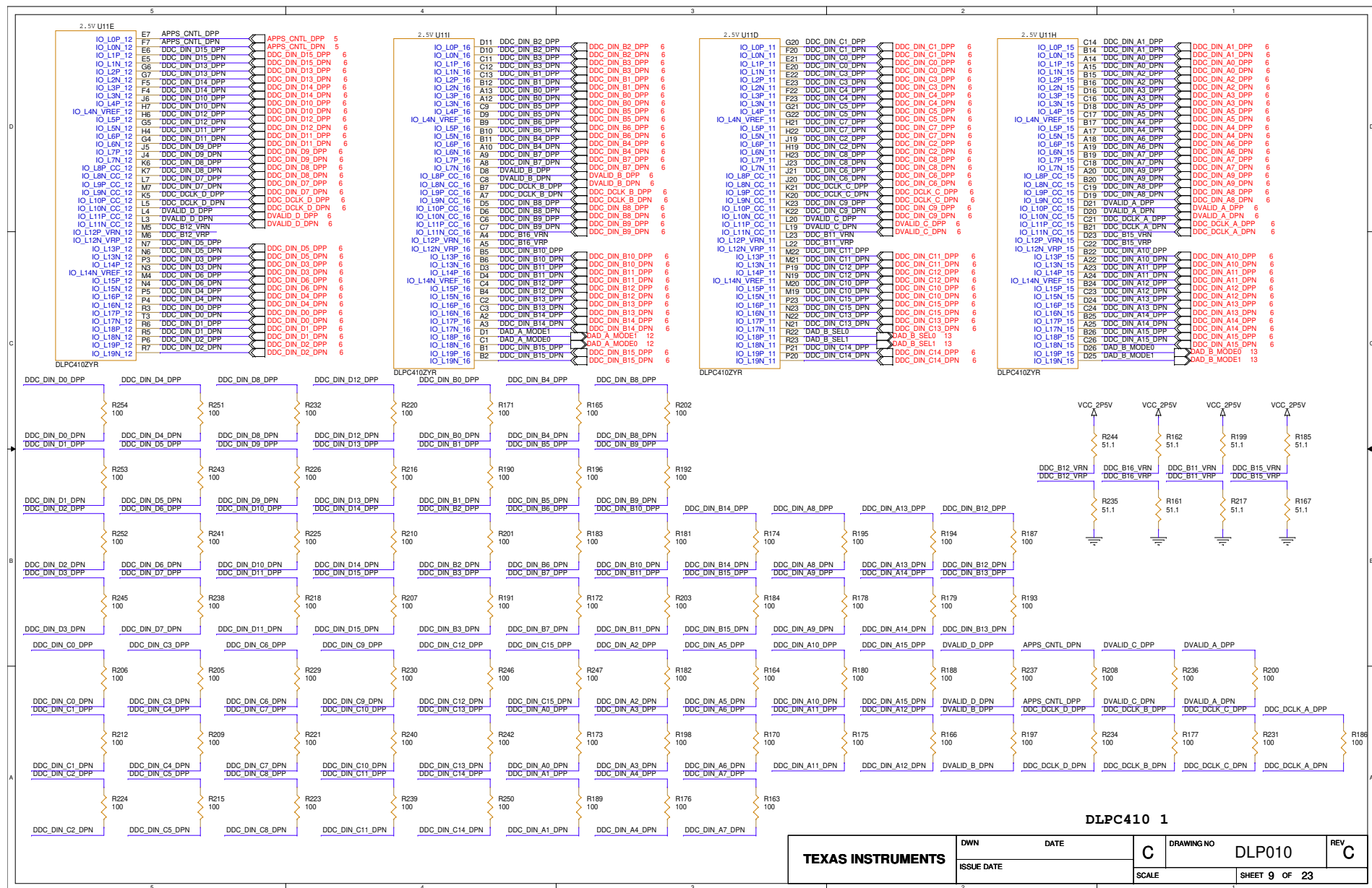


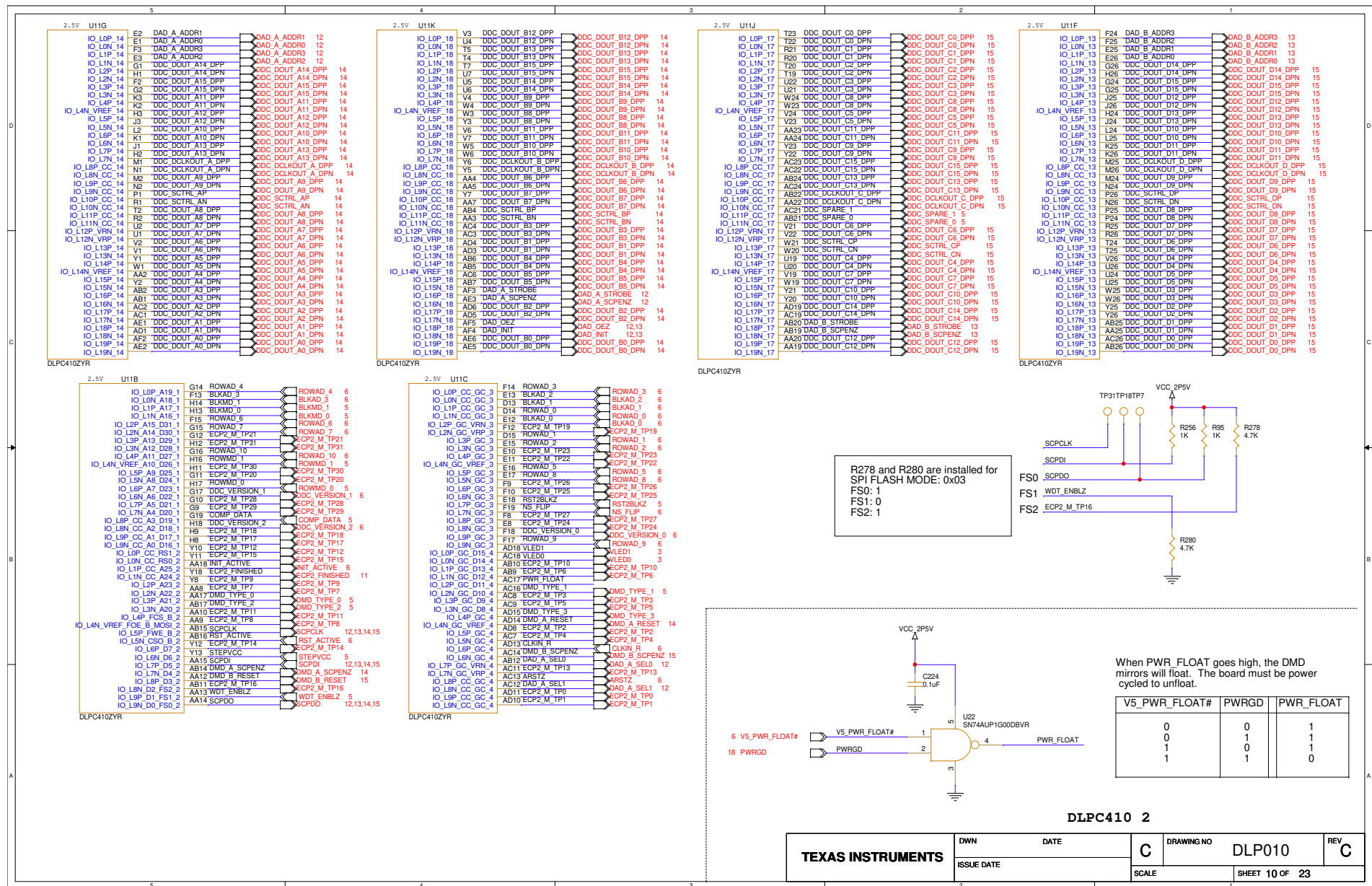


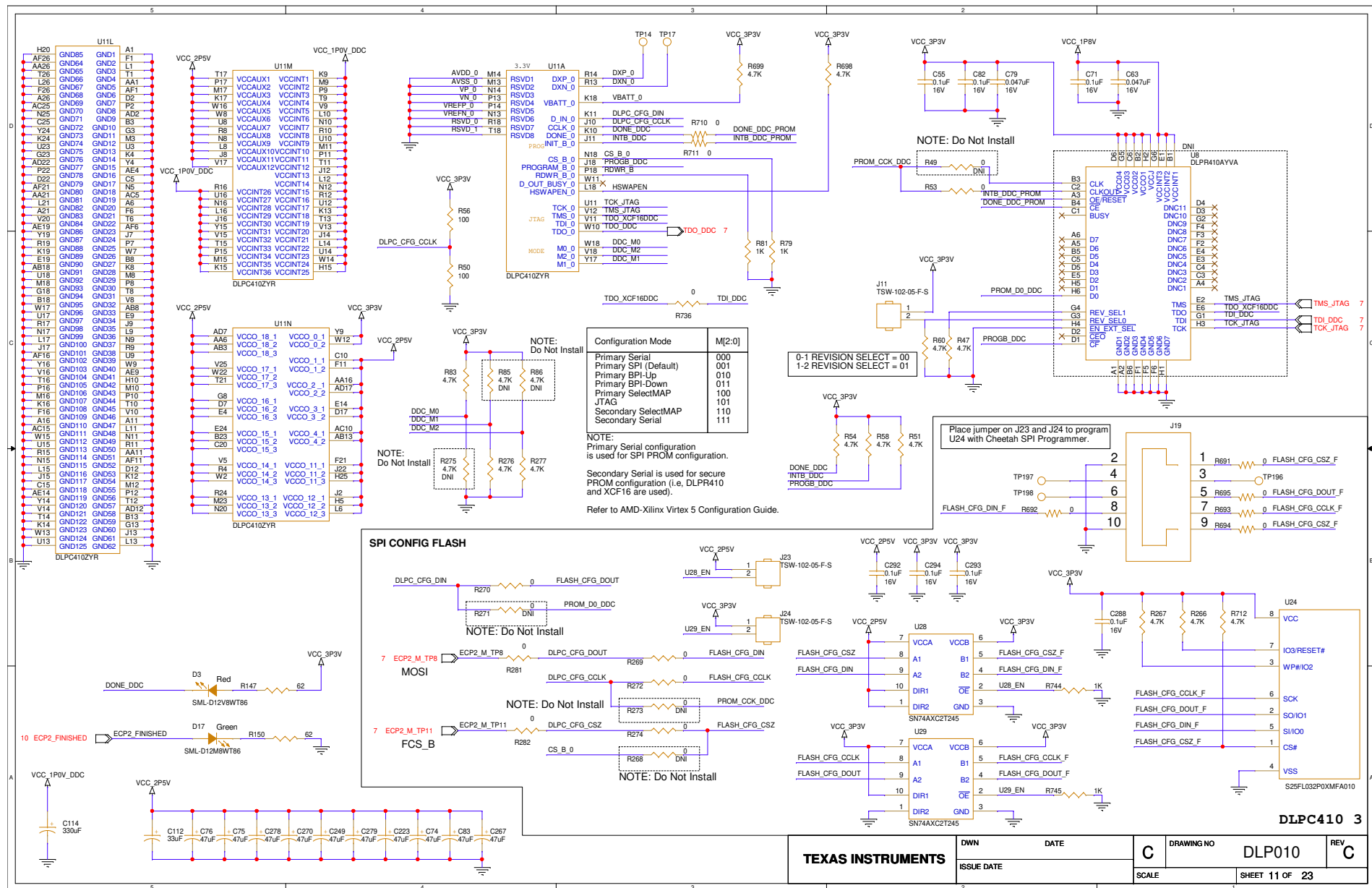


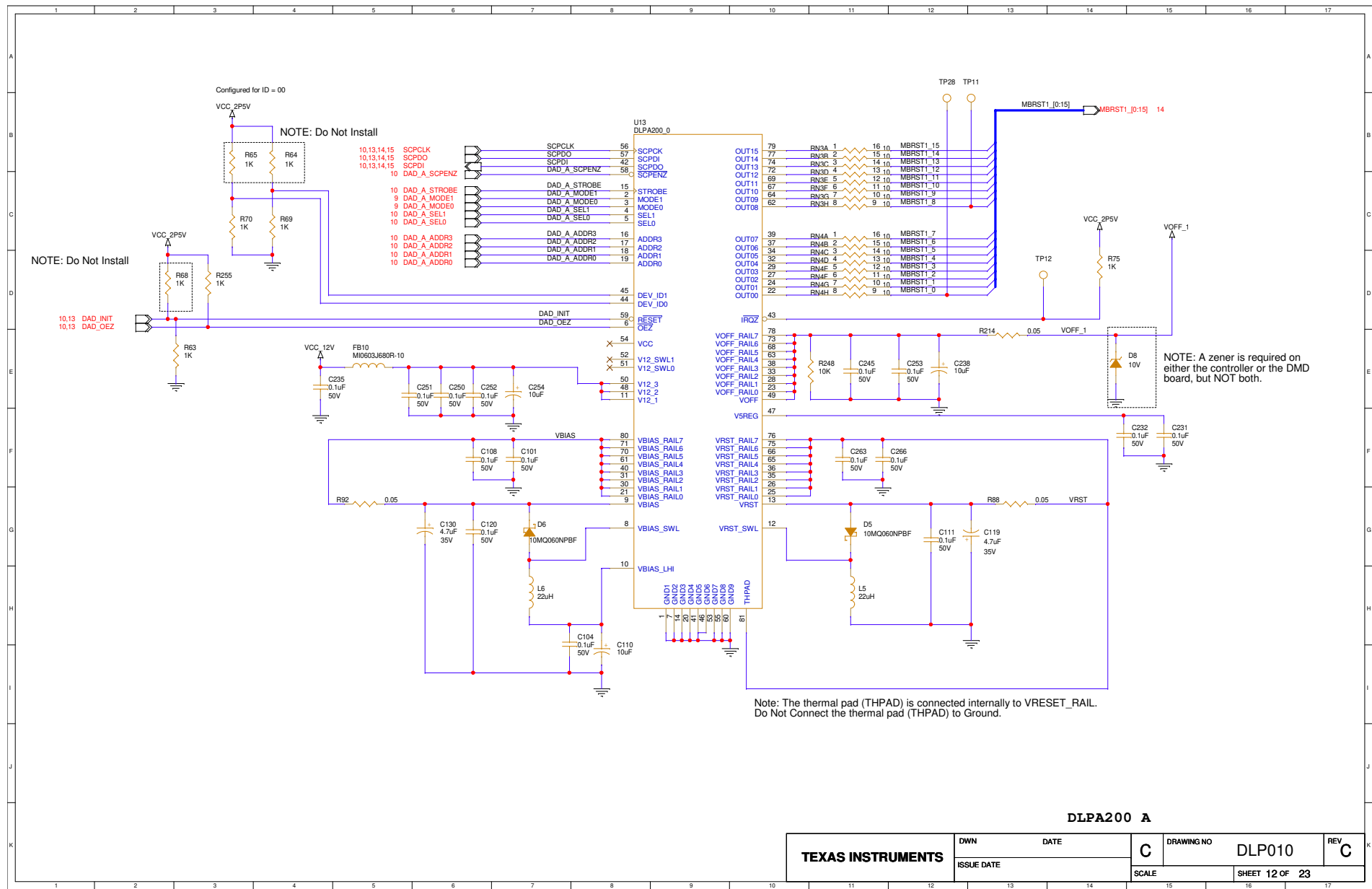


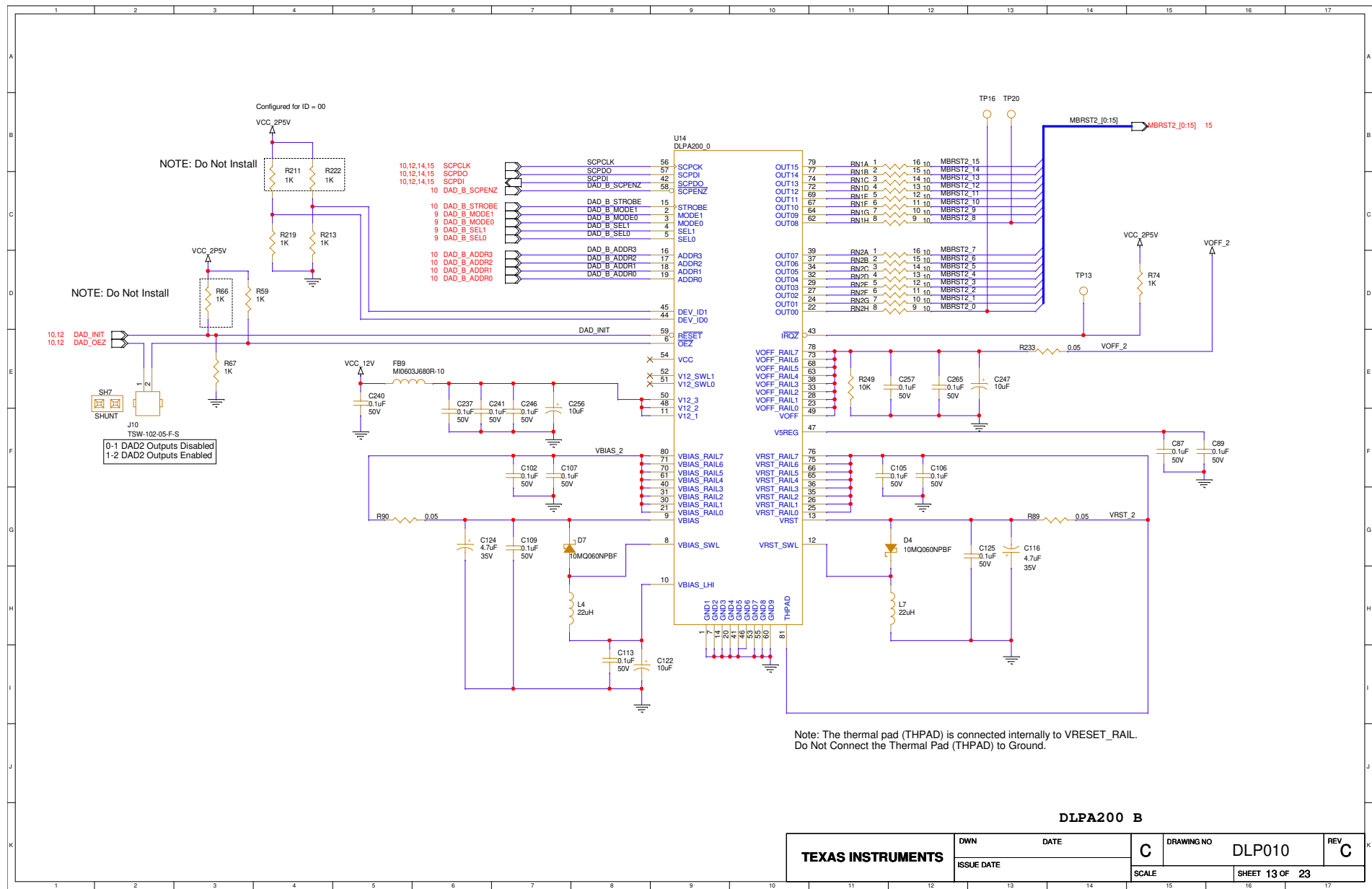


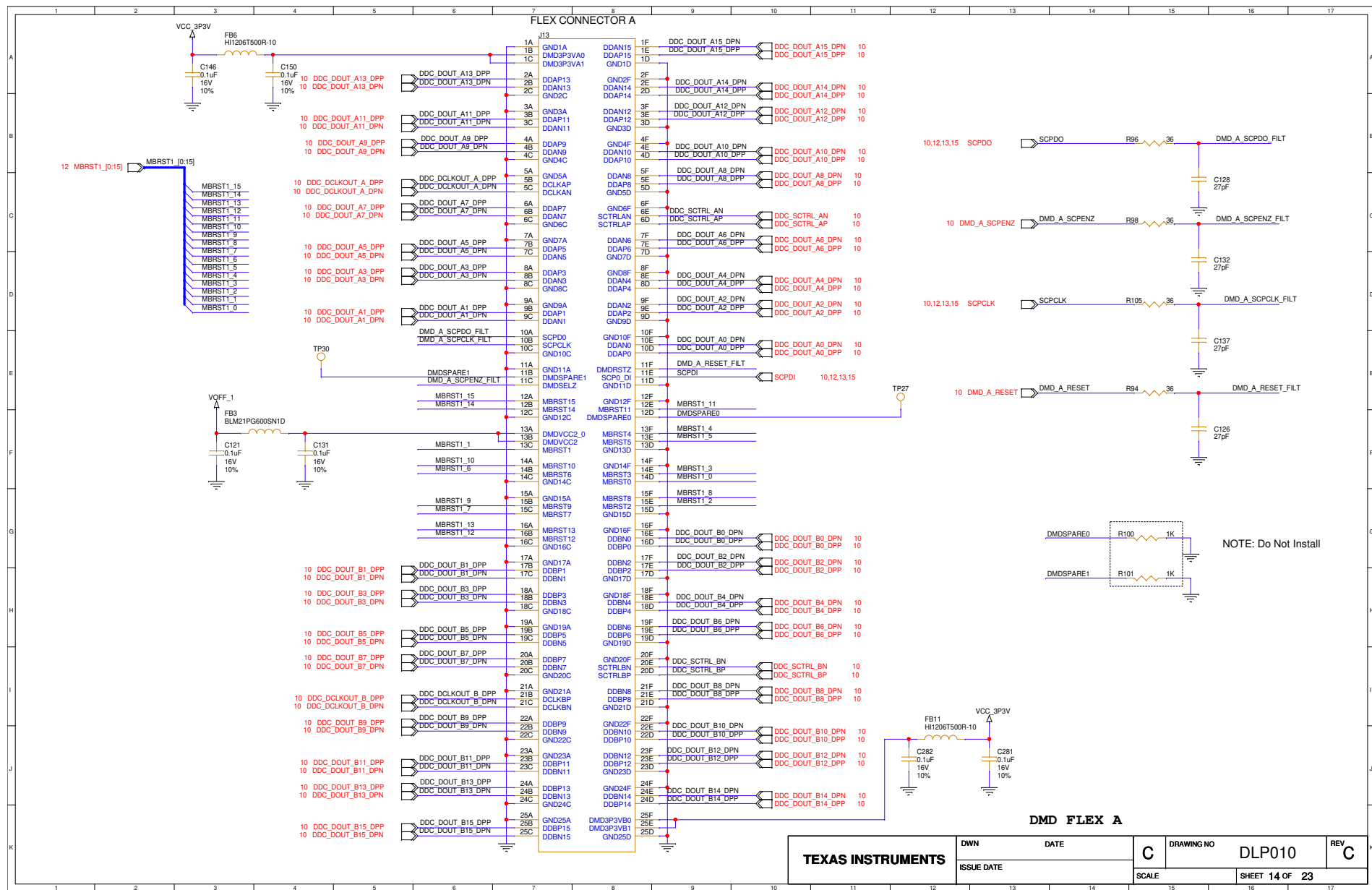


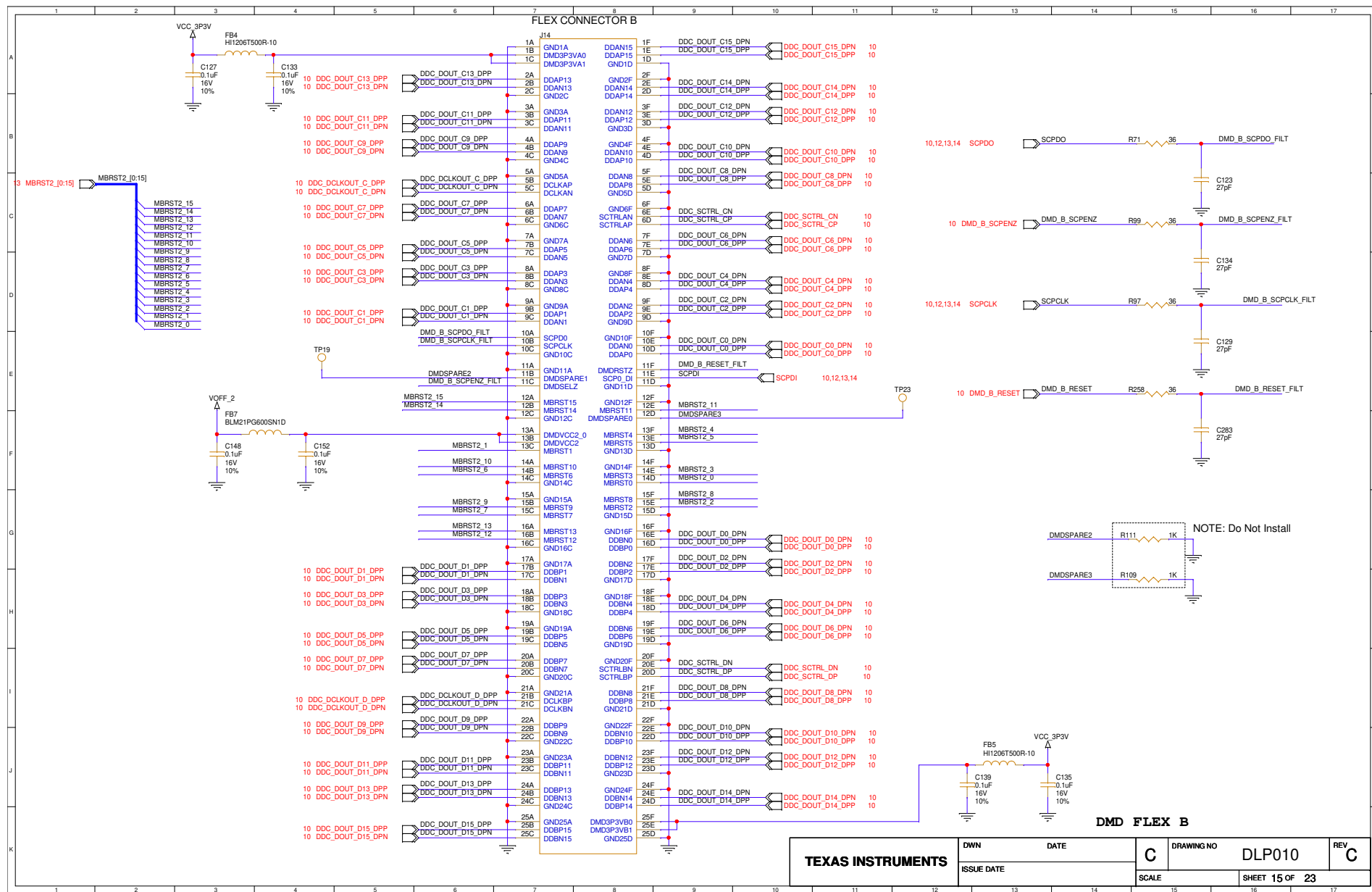


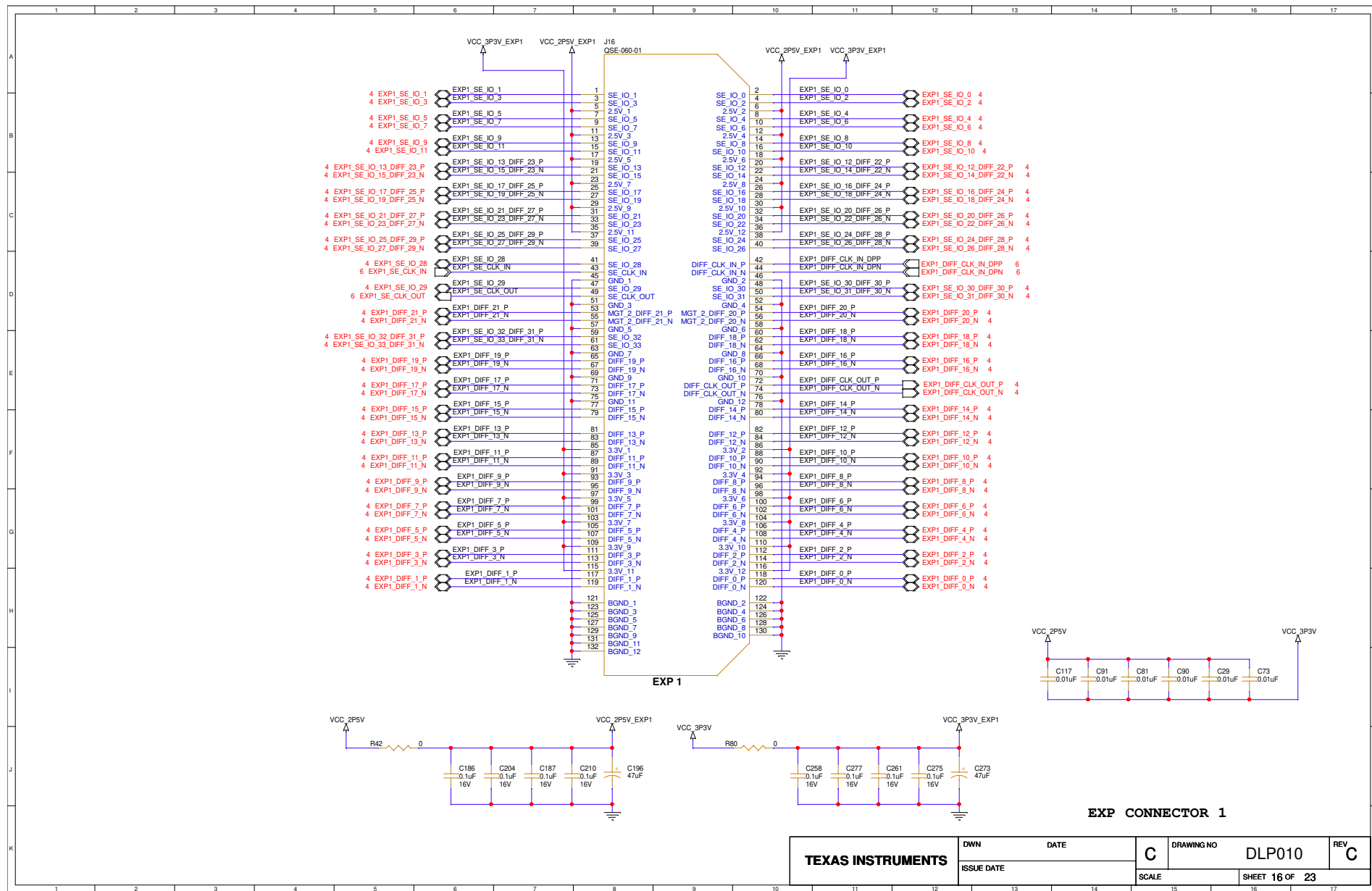


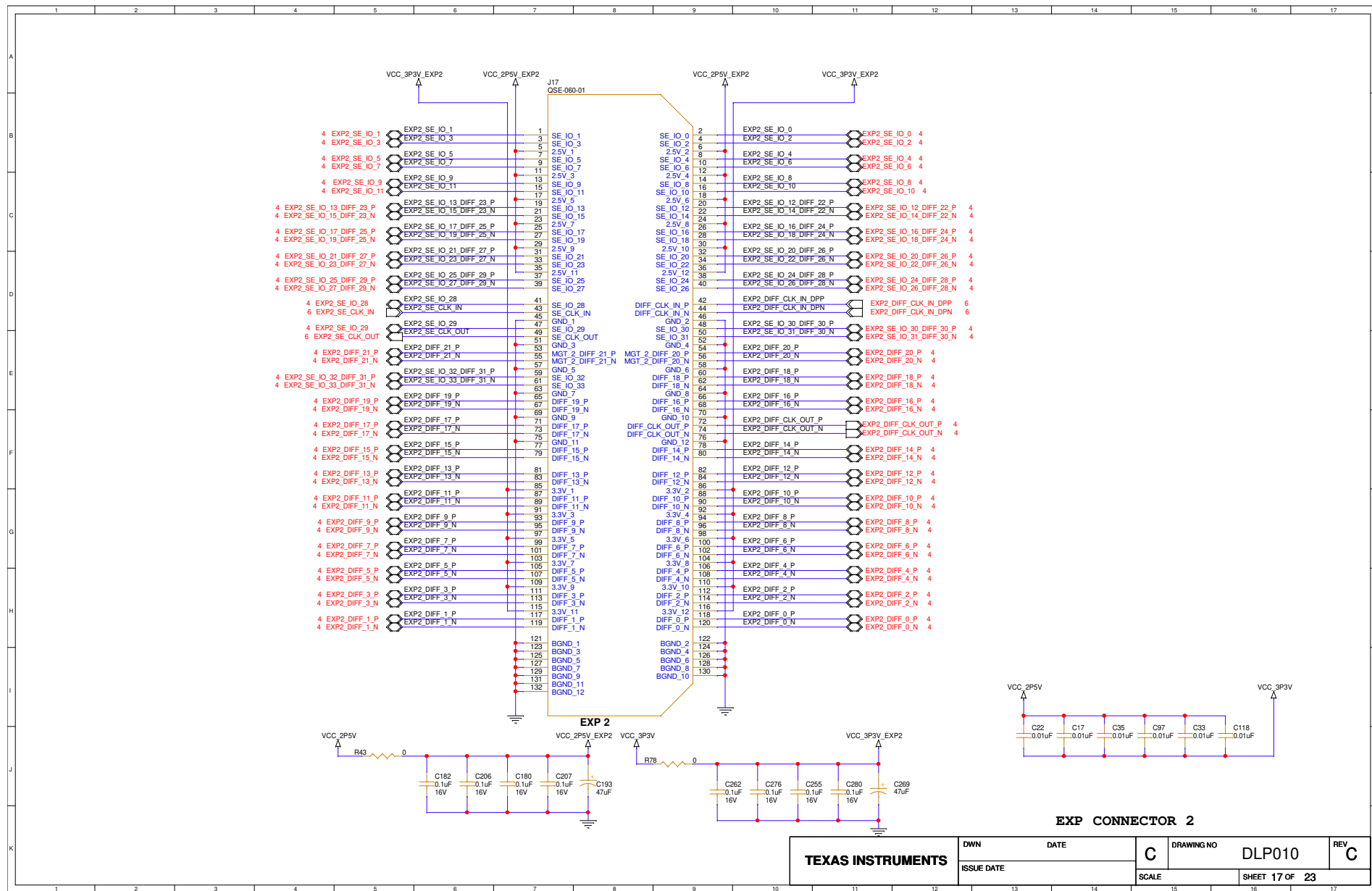


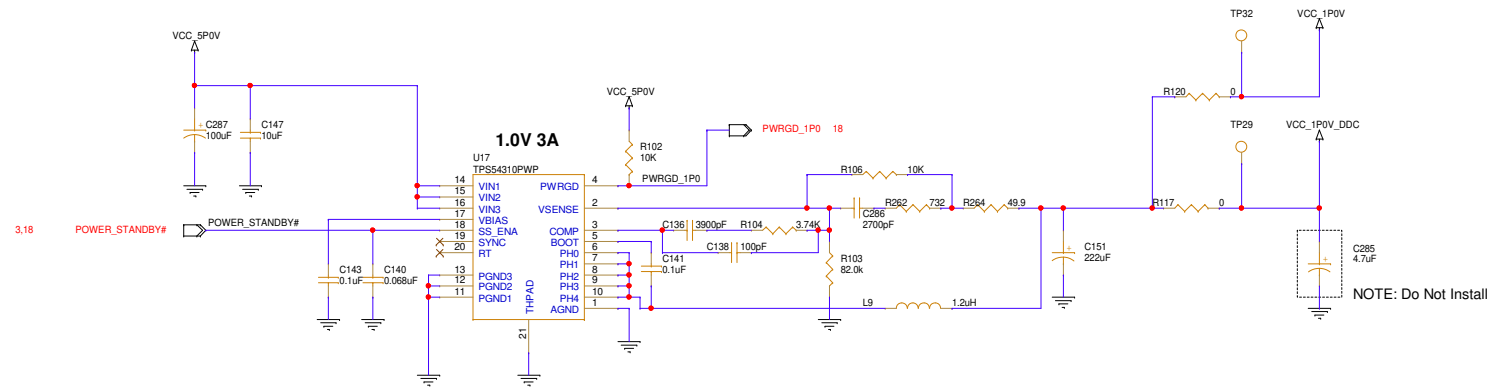






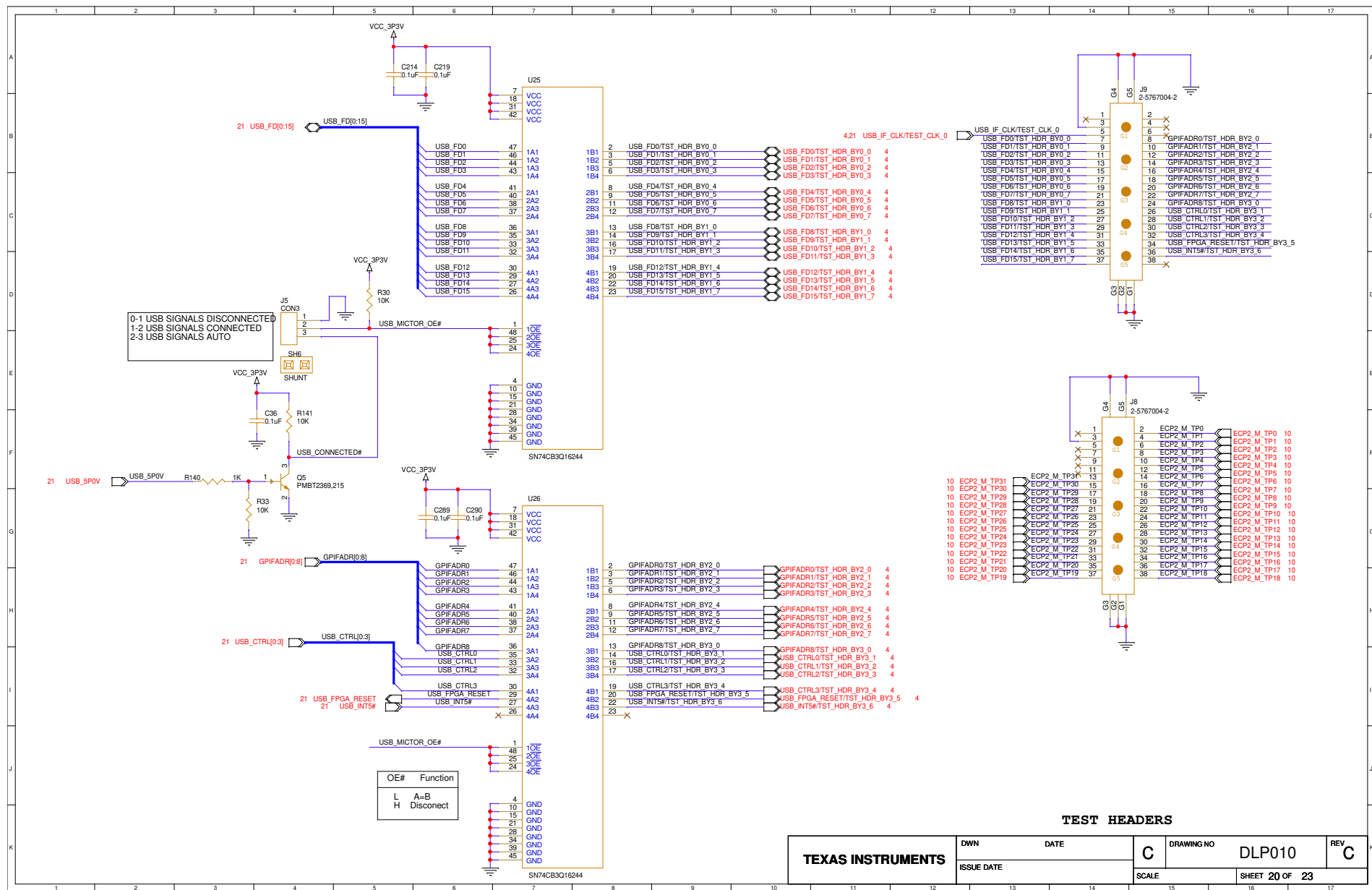


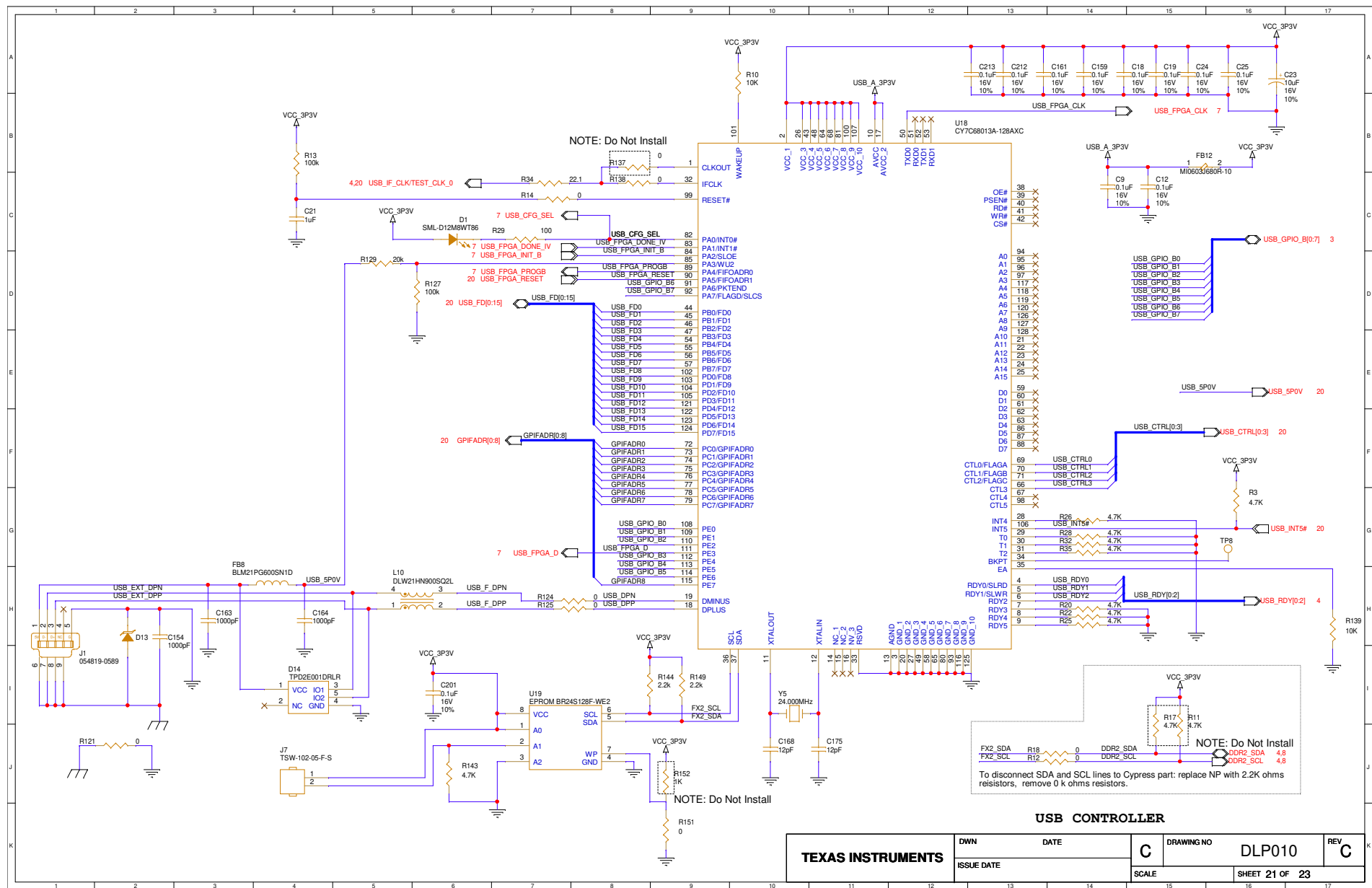




POWER 2

TEXAS INSTRUMENTS	DWN	DATE	C	DRAWING NO DLP010	REV C
	ISSUE DATE				
	SCALE			SHEET 19 OF 23	





Unused Virtex-5 Pins

UST		
XC5VLX50FFG1153		
A4	NC1	NC61
A5	NC2	NC62
A6	NC3	NC63
A7	NC4	NC64
A8	NC5	NC65
A9	NC6	NC66
A10	NC7	NC67
A11	NC8	NC68
A12	NC9	NC69
A13	NC10	NC70
A14	NC11	NC71
A15	NC12	NC72
A16	NC13	NC73
A17	NC14	NC74
A18	NC15	NC75
A19	NC16	NC76
A20	NC17	NC77
A21	NC18	NC78
A22	NC19	NC79
A23	NC20	NC80
A24	NC21	NC81
A25	NC22	NC82
A26	NC23	NC83
A27	NC24	NC84
A28	NC25	NC85
A29	NC26	NC86
A30	NC27	NC87
A31	NC28	NC88
B5	NC29	NC89
B6	NC30	NC90
B7	NC31	NC91
B8	NC32	NC92
B9	NC33	NC93
B10	NC34	NC94
B11	NC35	NC95
B12	NC36	NC96
B13	NC37	NC97
B14	NC38	NC98
B15	NC39	NC99
B16	NC40	NC100
B17	NC41	NC101
B18	NC42	NC102
B19	NC43	NC103
B20	NC44	NC104
B21	NC45	NC105
B22	NC46	NC106
B23	NC47	NC107
B24	NC48	NC108
B25	NC49	NC109
B26	NC50	NC110
B27	NC51	NC111
B28	NC52	NC112
B29	NC53	NC113
B30	NC54	NC114
B31	NC55	NC115
B32	NC56	NC116
B33	NC57	NC117
B34	NC58	NC118
B35	NC59	NC119
B36	NC60	NC120

USU		
XC5VLX50FFG1153		
AG18	NC121	NC181
AH13	NC122	NC182
AH14	NC123	NC183
AH15	NC124	NC184
AH16	NC125	NC185
AH17	NC126	NC186
AH18	NC127	NC187
AH19	NC128	NC188
AH20	NC129	NC189
AH21	NC130	NC190
AH22	NC131	NC191
AH23	NC132	NC192
AH24	NC133	NC193
AH25	NC134	NC194
AH26	NC135	NC195
AH27	NC136	NC196
AH28	NC137	NC197
AH29	NC138	NC198
AH30	NC139	NC199
AH31	NC140	NC200
AH32	NC141	NC201
AH33	NC142	NC202
AH34	NC143	NC203
AH35	NC144	NC204
AH36	NC145	NC205
AH37	NC146	NC206
AH38	NC147	NC207
AH39	NC148	NC208
AH40	NC149	NC209
AH41	NC150	NC210
AH42	NC151	NC211
AH43	NC152	NC212
AH44	NC153	NC213
AH45	NC154	NC214
AH46	NC155	NC215
AH47	NC156	NC216
AH48	NC157	NC217
AH49	NC158	NC218
AH50	NC159	NC219
AH51	NC160	NC220
AH52	NC161	NC221
AH53	NC162	NC222
AH54	NC163	NC223
AH55	NC164	NC224
AH56	NC165	NC225
AH57	NC166	NC226
AH58	NC167	NC227
AH59	NC168	NC228
AH60	NC169	NC229
AH61	NC170	NC230
AH62	NC171	NC231
AH63	NC172	NC232
AH64	NC173	NC233
AH65	NC174	NC234
AH66	NC175	NC235
AH67	NC176	NC236
AH68	NC177	NC237
AH69	NC178	NC238
AH70	NC179	NC239
AH71	NC180	NC240

Unused DLPC410 Pins

U110		
AC20	NC0	AD24
AB23	NC1	AD25
AE24	NC2	AD26
	NC3	AF24
	NC4	AF25
	NC5	AF26
	NC6	AD27
	NC7	AF27
	NC8	AD28
	NC9	AE28
	NC10	AD29
	NC11	AE29
	NC12	AE30
	NC13	AF29
	NC14	AE30
	NC15	AF30
	NC16	AF31
	NC17	AF32
	NC18	AF33
	NC19	AF34
	NC20	AE31
	NC21	AE32
	NC22	AD30
	NC23	AF35
	NC24	AE33
	NC25	AF36
	NC26	AF37
	NC27	AF38
	NC28	AF39
	NC29	AE34
	NC30	AE35
	NC31	AE36
	NC32	AE37
	NC33	AE38
	NC34	AE39
	NC35	AE40
	NC36	AE41
	NC37	AE42
	NC38	AE43
	NC39	AE44

DLPC410ZVR

UNUSED PINS

TEXAS INSTRUMENTS	DWN	DATE	C	DRAWING NO	DLP010	REV	C
	ISSUE DATE						
				SCALE	SHEET 22 OF 23		

Important Notice and Disclaimer

TI PROVIDES TECHNICAL AND RELIABILITY DATA (INCLUDING DATASHEETS), DESIGN RESOURCES (INCLUDING REFERENCE DESIGNS), APPLICATION OR OTHER DESIGN ADVICE, WEB TOOLS, SAFETY INFORMATION, AND OTHER RESOURCES "AS IS" AND WITH ALL FAULTS, AND DISCLAIMS ALL WARRANTIES, EXPRESS AND IMPLIED, INCLUDING WITHOUT LIMITATION ANY IMPLIED WARRANTIES OF MERCHANTABILITY, FITNESS FOR A PARTICULAR PURPOSE OR NON-INFRINGEMENT OF THIRD PARTY INTELLECTUAL PROPERTY RIGHTS.

These resources are intended for skilled developers designing with TI products. You are solely responsible for (1) selecting the appropriate TI products for your application, (2) designing, validating and testing your application, and (3) ensuring your application meets applicable standards, and any other safety, security, regulatory or other requirements.

These resources are subject to change without notice. TI grants you permission to use these resources only for development of an application that uses the TI products described in the resource. Other reproduction and display of these resources is prohibited. No license is granted to any other TI intellectual property right or to any third party intellectual property right. TI disclaims responsibility for, and you will fully indemnify TI and its representatives against, any claims, damages, costs, losses, and liabilities arising out of your use of these resources.

TI's products are provided subject to TI's Terms of Sale or other applicable terms available either on ti.com or provided in conjunction with such TI products. TI's provision of these resources does not expand or otherwise alter TI's applicable warranties or warranty disclaimers for TI products.

TI objects to and rejects any additional or different terms you may have proposed.

(C) COPYRIGHT 2023
Texas Instruments
All Rights Reserved

TEXAS INSTRUMENTS

DWN	DATE	C	DRAWING NO DLP010	REV C
ISSUE DATE				
		SCALE	SHEET 23 OF 23	