

TI 设计: TIDEP-0094

采用 IWR1642 毫米波传感器的 80m 级检测距离的物体检测参考设计



说明

TIDEP-0094 采用 IWR1642 评估模块 (EVM), 为物体检测评估的实现提供了基础。此设计可实现在其高达 84m 的视野范围内估算物体的位置 (在方位平面中) 和速度。

资源

TIDEP-0094	设计文件夹
IWR1642	产品文件夹
TMP112	产品文件夹
LP87524	工具文件夹
TPS7A88	工具文件夹
TPS7A8101	工具文件夹

特性

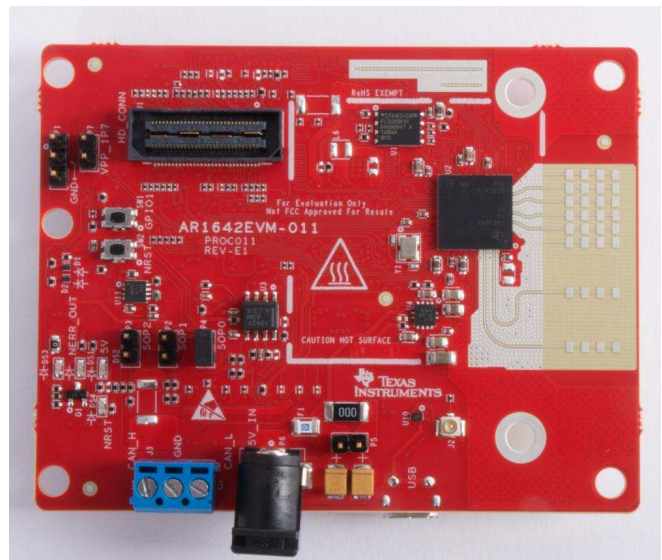
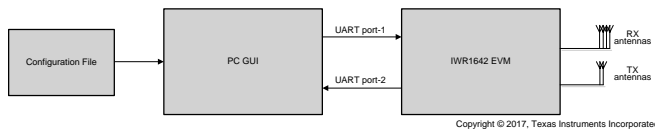
- 物体检测范围高达 84m, 距离分辨率为 37cm
- 天线视野为 $\pm 60^\circ$, 且角度分辨率约为 15°
- 通过毫米波软件开发套件 (SDK) 提供了快速傅里叶变换 (FFT) 处理和检测源代码
- 使用 IWR1642 EVM 展示了设计
- 对雷达前端和检测配置进行了全面说明

应用

- [服务机器人](#)
- [物流机器人](#)
- [工业机器人](#)
- [工业运输](#)
- [叉车](#)
- [无人机系统](#)



咨询我们的 E2E 专家



该 TI 参考设计末尾的重要声明表述了授权使用、知识产权问题和其他重要的免责声明和信息。

1 System Description

The goal of industrial systems is to increase productivity. Increasingly these systems intelligently interact with dynamic surroundings and the objects in them. Robots are quickly being deployed as costs are reduced and functionality is increased to automate mundane and tedious operations. Agriculture, construction, and heavy vehicles are increasing in intelligence to assist in operator productivity and enhance the safety towards autonomous operation. Forklifts are rapidly adding intelligence to detect obstacles, balance loads, and detect ground edges. Drones are disrupting entire industries from package delivery to forestry. All of these systems require a variety of sensors to detect obstacles in the environment as well as track object velocities and positions over time.

1.1 Why mmWave Sensors?

mmWave Sensors allow the accurate measurement of distances and relative velocities of obstacles. An important advantage of mmWave sensors over vision and LIDAR-based sensors are their relatively immunity to environmental conditions, such as rain, dust, smoke, fog, or frost. Additionally, mmWave sensors can work in complete darkness or in the glare of direct sunlight. Mounted directly behind enclosure plastics without external lenses, apertures, or sensor surfaces, the sensors are extremely rugged. TI's mmWave sensors are also small, lightweight, and produce designs that are three times smaller and half the weight of miniature LIDAR range finders.

1.2 80-m Range Object Detection TI Design

The TIDEP-0094 is an introductory application configured to detect objects up to a distance of 84 m as well as estimate their velocities and positions.

The TI Design can be used as a starting point to design a standalone sensor for a variety of Industrial applications. A range of more than 84 m can be achieved with the design of different chirp parameters, use of an external lens, or through design of an antenna with higher gain than the one included in the IWR1642 EVM.

1.3 Key System Specifications

表 1. Key System Specifications

PARAMETER	SPECIFICATIONS	DETAILS
Maximum range	84.375 m	This represents the maximum distance that the radar can detect an object representing an RCS of approximately 10 m ² .
Range resolution	36.6 cm	Range resolution is the ability of a radar system to distinguish between two or more targets on the same bearing but at different ranges.
Maximum velocity	29.33 kph	This is the native maximum velocity obtained using a two-dimensional FFT on the frame data. This specification will be improved over time by showing how higher-level algorithms can extend the maximum measurable velocity beyond this limit.
Velocity resolution	0.46 kph	This parameter represents the capability of the radar sensor to distinguish between two or more objects at the same range but moving with different velocities.

2 System Overview

2.1 Block Diagram

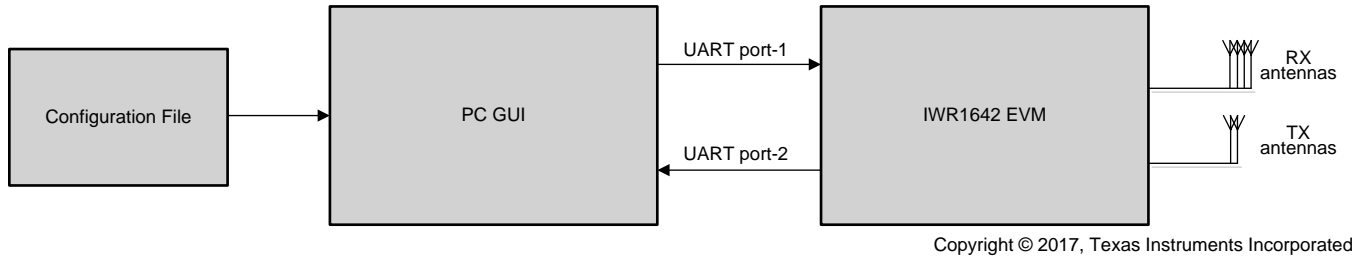


图 1. System Block Diagram

2.2 Highlighted Products

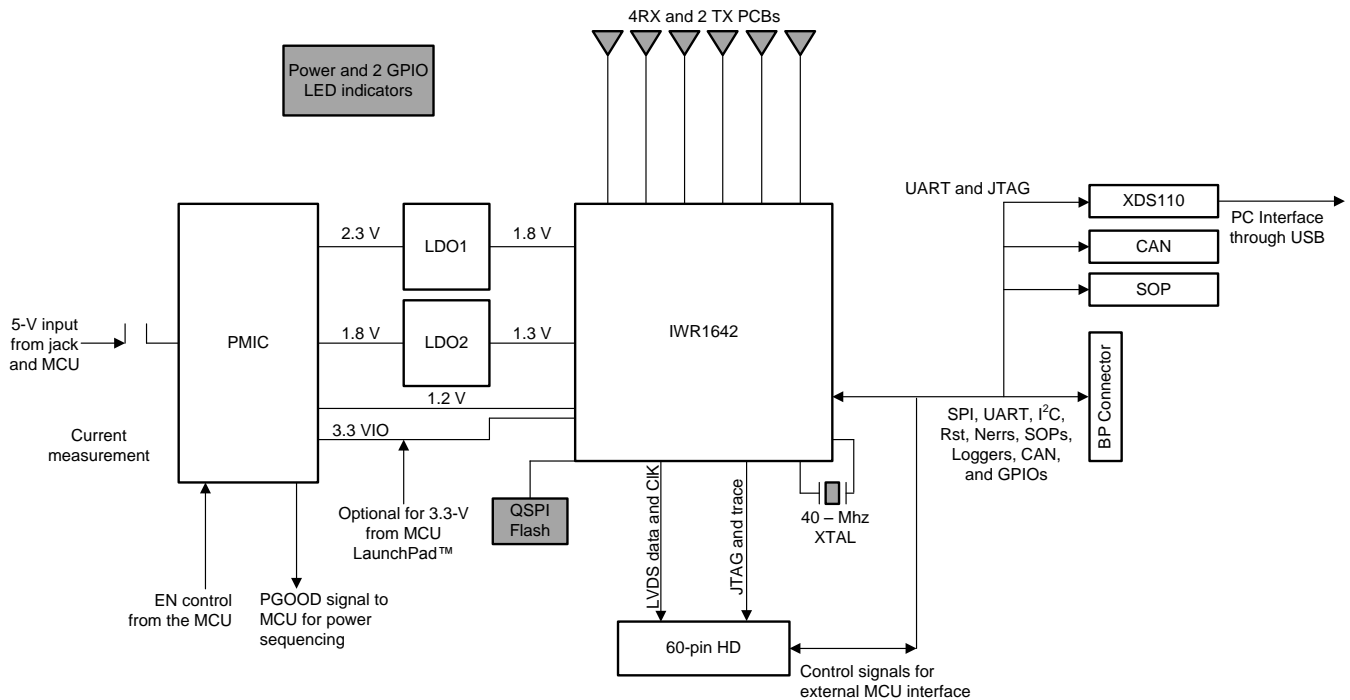
2.2.1 IWR1642 Single-Chip Radar Solution

The IWR1642 is an integrated single-chip, frequency modulated continuous wave (FMCW) sensor capable of operation in the 76 to 81 GHz frequency band. The device is built with TI's low-power, 45-nm RFCMOS processor and enables unprecedented levels of analog and digital integration in an extremely small form factor. The device has four receivers and two transmitters with a closed loop PLL for precise and linear chirp synthesis. The sensor includes a built-in radio processor (BIST) for RF calibration and safety monitoring. Based on complex baseband architecture, the sensor device supports an IF bandwidth of 5 MHz with reconfigurable output sampling rates. The presence of ARM® Cortex® R4F and Texas Instruments C674x DSP (fixed and floating point) along with 1.5 MB of on-chip RAM enables high-level algorithm development.

2.2.2 IWR1642

The IWR1642 has the following features:

1. IWR1642 mmWave sensor device
2. Power management circuit to provide all the required supply rails from a single 5-V input
3. Two onboard TX antennas and four RX antennas
4. Onboard XDS110 that provides a JTAG interface, UART1 for loading the mmWave sensor configuration on the IWR1642 device, and UART2 to send the object data back to the PC



Copyright © 2017, Texas Instruments Incorporated

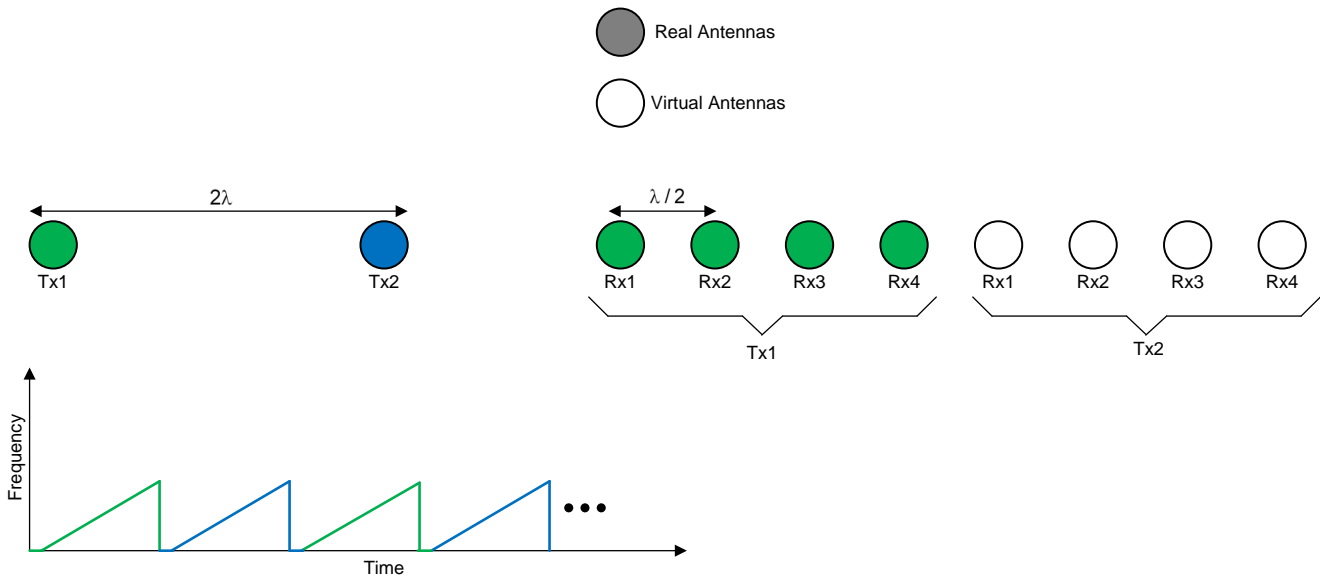
图 2. IWR1642

For more details on the hardware, see the *IWR1642 Evaluation Module (IWR1642BOOST) Single-Chip mmWave Sensing Solution* [1]. The schematics and design database can be found in the following documents: *IWR1642BOOST Design Database* [5] and *IWR1642BOOST Schematic, Assembly, and BOM* [6].

2.3 System Design Theory - Chirp Configuration

2.3.1 Antenna Configuration

The TIDEP-0094 uses four receivers and the two transmitters in the time division multiplexed MIMO configuration (that is, alternate chirps in a frame transmit on TX1 and TX2 respectively.). The MIMO configuration synthesizes an array of eight virtual RX antennas, as shown in 图 3. This technique improves the angle resolution by a factor of two (compared to a single TX configuration).



Copyright © 2017, Texas Instruments Incorporated

图 3. MIMO Antenna Configuration

2.3.2 Chirp Configuration and System Performance

To achieve the specific use case with a visibility range of approximately 80 m and memory availability of IWR1642, the chirp configuration in 表 2 is used.

表 2. Chirp Configuration

PARAMETER	SPECIFICATIONS
Idle time (μs)	3
ADC start time (μs)	3
Ramp end time (μs)	56
Number of ADC samples	256
Frequency slope (MHz/ μs)	8
ADC sampling frequency (ksps)	5000
MIMO (1→yes)	1
Number of chirps per profile	64
Effective chirp time (usec)	51.2
Bandwidth (MHz)	409.6
Frame length (ms)	7.552
Memory requirements (KB)	512

The 表 2 configuration is selected to achieve the system performance shown in 表 3. The primary goal was to achieve a maximum distance of about 85 m. Note that the product of the frequency slope and the maximum distance is limited by the available IF bandwidth (5 MHz for the IWR1642). Thus, a maximum distance of 85 m locks down the frequency slope of the chirp to about 8 MHz/ μs . See the *Programming Chirp Parameters in TI Radar Devices* [2] application report for more details. The choice of the chirp periodicity is a trade-off between range resolution and maximum velocity. This design uses a range-resolution of about 0.3 m, which leaves a native maximum velocity of about 30 kmph ⁽¹⁾. For details on the connection between the system performance and the chirp parameters, see the *Programming Chirp Parameters in TI Radar Devices* [2] application note. Through high-level algorithms, the maximum unambiguous velocity that can be detected is 90 kmph.

A larger maximum distance translates to a lower range resolution (due to limitations on both the L3 memory and the IF bandwidth). A useful technique to work around this trade-off is to have multiple configurations with each tailored for a specific viewing range. For example, it is typical to have the mmWave sensor alternate between two modes: a low resolution mode targeting a larger maximum distance (such as 85 m with 0.3-m resolution) and a high resolution mode targeting a shorter distance (such as 20 m with 4-cm resolution). This multi-mode capability is not implemented in the current TI design but is targeted for a future release.

⁽¹⁾ Though not implemented in the current design, note that there are several approaches that can improve the maximum detectable velocity several multiples beyond this native maximum.

表 3. System Performance Parameters

PARAMETER	SPECIFICATIONS
Range resolution (m)	0.366210938
Maximum distance (m)	84.375
Native maximum velocity (kmph)	29.33507171

2.3.3 Configuration Profile

The example in the mmWave SDK 1.0 distribution that represents the TI Design allows the user to push the mmWave sensor configuration using a *Profile Configuration* file.

The *mmWave SDK User's Guide* [7] describes the semantics of the following commands in detail. The following sequence of commands represent the configuration choices described in earlier sections representing sensor functionality.

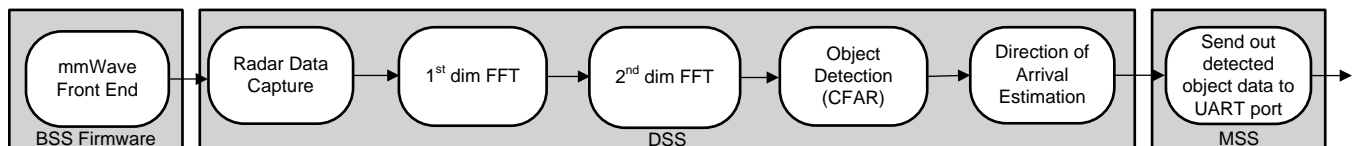
```

sensorStop
flushCfg
dfeDataOutputMode 1
channelCfg 15 3 0
adcCfg 2 1
adcbufCfg 0 0 1 1
profileCfg 0 77 3 3 56 0 0 8 1 256 5000 0 0 30
chirpCfg 0 0 0 0 0 0 0 1
chirpCfg 1 1 0 0 0 0 0 2
frameCfg 0 1 64 0 100 1 0
lowPower 0 0
guiMonitor 1 1 1 0 0 1
cfarCfg 0 0 8 4 4 0 5000
cfarCfg 1 0 8 4 4 0 5000
peakGrouping 1 0 1 1 224
multiObjBeamForming 0 0.5
calibDcRangeSig 0 -5 8 256
sensorStart
    
```

The profile configuration defines the profile of a single chirp (as per 表 1). Subsequently, two chirp configurations are defined each one inheriting the same profile but associated with Tx1 and Tx2 respectively. Finally a frame configuration message constructs a frame with transmissions alternating between Tx1 and Tx2.

2.3.4 Data Path

The block diagram in 图 4 shows the processing data part to the SRR application.

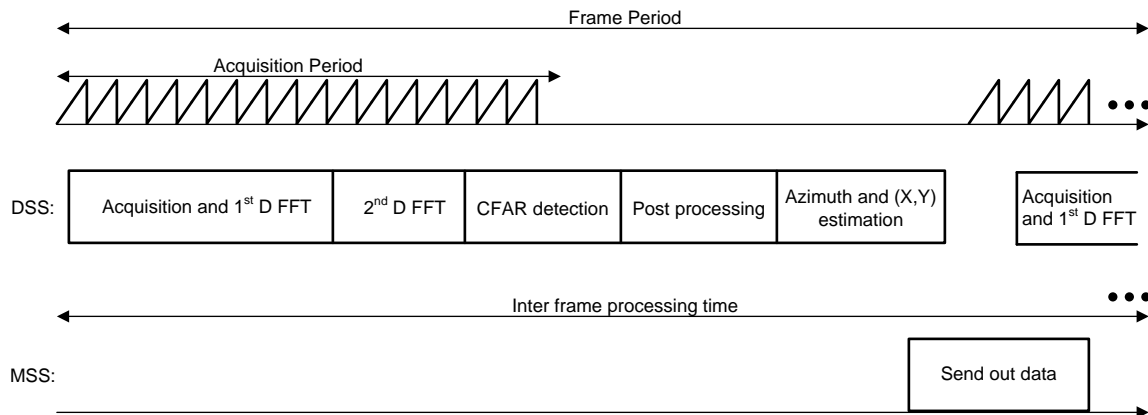


Copyright © 2017, Texas Instruments Incorporated

图 4. Processing Chain

2.3.5 Chirp Timing

图 5 shows the timing of the chirps and subsequent processing in the system.



Copyright © 2017, Texas Instruments Incorporated

图 5. Top Level Data Path Timing

As seen in 图 5, the data path processing is described below.

- The RF front end is configured by the BIST subsystem (BSS). The raw data obtained from the various front end channels is taken by the C674x DSP subsystem (DSS) for processing.
- Processing during the chirps as seen in 图 5 consists of:
 - 1D (range) FFT processing performed by the C674x that takes input from multiple receive antennae from the ADC buffer for every chirp (corresponding to the chirping pattern on the transmit antennae)
 - Transferring transposed output into the L3 RAM by EDMA
- Processing during the idle or cool down period of the RF circuitry following the chirps until the next chirping period, shown as *Inter frame processing time* in 图 5. This processing consists of:
 - 2D (velocity) FFT processing performed by C674x that takes input from 1D output in L3 RAM and performs FFT to give a (range, velocity) matrix in the L3 RAM. The processing also includes the CFAR detection in Doppler direction. CFAR detection in range direction uses the mmWave library.
 - Peak grouping if enabled
 - Direction of arrival (azimuth) estimation to map the X-Y location of object

For more details on the application flow and processing, see the *mmWave SDK User's Guide* [7].

3 Hardware, Software, Testing Requirements, and Test Results

3.1 Required Hardware and Software

The IWR1642 BoosterPack™ from Texas Instruments is an easy-to-use evaluation board for the IWR1642 mmWave sensing devices.

The short range radar application runs on the IWR1642 EVM and connects to a visualization tool running on a PC connected to the EVM over USB.

Details regarding usage of this board can be found in the *IWR1642 Evaluation Module (IWR1642BOOST) Single-Chip mmWave Sensing Solution* [1].

Details regarding the visualization tool can be found in the *mmWave SDK User's Guide* [7].

3.1.1 Hardware

The IWR1642 core design includes:

- IWR1642 device, a single-chip, 77-GHz mmWave sensor device with an integrated DSP
- Power management network using an LDO and PMIC DCDC supply (TPS7A88, TPS7A8101-Q1, LP87524B-Q1)
- The EVM also hosts a device to assist with on-board emulation and UART emulation over a USB link with the PC

3.1.2 Software

Associated software is hosted as the *mmWave Demo* in [mmWave SDK](#) distribution.

3.2 Testing and Results

3.2.1 Test Setup

表 4 summarizes the time complexity of key building blocks in the processing chain (running on C674x DSP hosted in the IWR1642).

表 4. Software Algorithm Processing Characteristics

	CYCLES	TIMING (μ s) (AT 600 MHz)	SOURCE AND FUNCTION NAME
128-point FFT (16 bit)	516	0.86 μ s	DSPLIB (DSP_fft16x16)
256-point FFT (16 bit)	932	1.55 μ s	DSPLIB (DSP_fft16x16)
128-point FFT (32 bit)	956	1.59 μ s	DSPLIB (DSP_fft32x32)
Windowing (16bit)	$0.595N + 70$	0.37 μ s (for N=256)	mmwavelib (mmwavelib_windowing16x16)
Windowing (32 bit)	$N + 67$	0.32 μ s (for N=128)	mmwavelib (mmwavelib_windowing16x32)
Log2abs (16 bit)	$1.8N + 75$	0.89 μ s (for N=256)	mmwavelib (mmwavelib_log2Abs16)
Log2abs (32 bit)	$3.5N + 68$	0.86 μ s (for N=128)	mmwavelib (mmwavelib_log2Abs32)
CFAR-CA detection	$3N + 161$	0.91 μ s	mmwavelib (mmwavelib_cfarCadB)
Max of a vector of length 256	70	0.12 μ s	DSPLIB (DSP_maxval)
Sum of complex vector of length 256(16 bit I,Q)	169	0.28 μ s	—
Multiply two complex vectors of length 256 (16 bit)	265	0.44 μ s	—

This system was used in field tests and a few observations are shown in 节 3.2.2, where a small size car is continuously visible up to 80-m distance and a motorcycle is detected up to 50-m away.

3.2.2 Test Results

The following results were obtained by performing field tests where a single small vehicle and motorcycle were driven away from the system while the results were being logged.

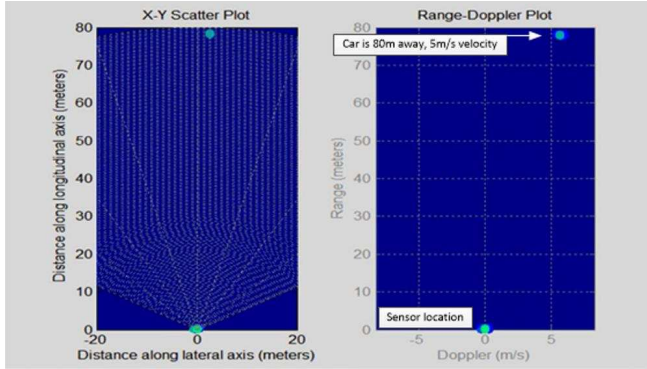


图 6. Small Car Test at 80 m



图 7. Small Car Test at 80 m

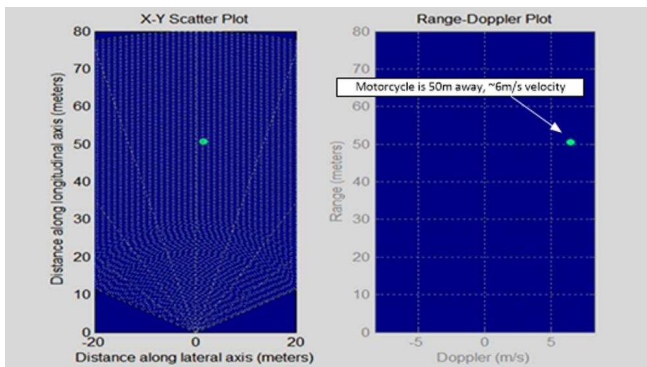


图 8. Motorcycle Test at 50 m



图 9. Motorcycle Test at 50 m

4 Software Files

To download the software files, see the design files at [TIDEP-0094](#) .

5 Related Documentation

1. Texas Instruments, [IWR1642 Evaluation Module \(IWR1642BOOST\) Single-Chip mmWave Sensing Solution](#) , User's Guide (SWRU521)
2. Texas Instruments, [Programming Chirp Parameters in TI Radar Devices](#), Application Report (SWRA553)
3. Texas Instruments, [IWR1642 Single-Chip 77- and 79-GHz mmWave Sensor](#), IWR1642 Datasheet (SWRS212)
4. Texas Instruments, [IWR14xx/16xx Technical Reference Manual](#), Technical Reference (SWRU522)
5. Texas Instruments, [IWR1642 Evaluation Board Design Database](#), Schematic (SPRR255)
6. Texas Instruments, [IWR1642BOOST Schematic, Assembly, and BOM](#), Schematic (SPRR256)
7. Texas Instruments, [mmWave SDK User's Guide](#), Tools Folder

有关 TI 设计信息和资源的重要通知

德州仪器 (TI) 公司提供的技术、应用或其他设计建议、服务或信息，包括但不限于与评估模块有关的参考设计和材料（总称“TI 资源”），旨在帮助设计人员开发整合了 TI 产品的应用；如果您（个人，或如果是代表贵公司，则为贵公司）以任何方式下载、访问或使用了任何特定的 TI 资源，即表示贵方同意仅为该等目标，按照本通知的条款进行使用。

TI 所提供的 TI 资源，并未扩大或以其他方式修改 TI 对 TI 产品的公开适用的质保及质保免责声明；也未导致 TI 承担任何额外的义务或责任。TI 有权对其 TI 资源进行纠正、增强、改进和其他修改。

您理解并同意，在设计应用时应自行实施独立的分析、评价和判断，且应全权负责并确保应用的安全性，以及您的应用（包括应用中使用的 TI 产品）应符合所有适用的法律法规及其他相关要求。您就您的应用声明，您具备制订和实施下列保障措施所需的一切必要专业知识，能够 (1) 预见故障的危险后果，(2) 监视故障及其后果，以及 (3) 降低可能导致危险的故障几率并采取适当措施。您同意，在使用或分发包含 TI 产品的任何应用前，您将彻底测试该等应用和该等应用所用 TI 产品的功能。除特定 TI 资源的公开文档中明确列出的测试外，TI 未进行任何其他测试。

您只有在为开发包含该等 TI 资源所列 TI 产品的应用时，才被授权使用、复制和修改任何相关单项 TI 资源。但并未依据禁止反言原则或其他法律授予您任何 TI 知识产权的任何其他明示或默示的许可，也未授予您 TI 或第三方的任何技术或知识产权的许可，该等产权包括但不限于任何专利权、版权、屏蔽作品权或与使用 TI 产品或服务的任何整合、机器制作、流程相关的其他知识产权。涉及或参考了第三方产品或服务的信息不构成使用此类产品或服务的许可或与其相关的保证或认可。使用 TI 资源可能需要您向第三方获得对该等第三方专利或其他知识产权的许可。

TI 资源系“按原样”提供。TI 兹免除对 TI 资源及其使用作出所有其他明确或默示的保证或陈述，包括但不限于对准确性或完整性、产权保证、无复发故障保证，以及适销性、适合特定用途和不侵犯任何第三方知识产权的任何默认保证。

TI 不负责任何申索，包括但不限于因组合产品所致或与之有关的申索，也不为您辩护或赔偿，即使该等产品组合已列于 TI 资源或其他地方。对因 TI 资源或其使用引起或与之有关的任何实际的、直接的、特殊的、附带的、间接的、惩罚性的、偶发的、从属或惩戒性损害赔偿，不管 TI 是否获悉可能会产生上述损害赔偿，TI 概不负责。

您同意向 TI 及其代表全额赔偿因您不遵守本通知条款和条件而引起的任何损害、费用、损失和/或责任。

本通知适用于 TI 资源。另有其他条款适用于某些类型的材料、TI 产品和服务的使用和采购。这些条款包括但不限于适用于 TI 的半导体产品 (<http://www.ti.com/sc/docs/stdterms.htm>)、[评估模块](http://www.ti.com/sc/docs/sampters.htm)和样品 (<http://www.ti.com/sc/docs/sampters.htm>) 的标准条款。

邮寄地址：上海市浦东新区世纪大道 1568 号中建大厦 32 楼，邮政编码：200122
Copyright © 2017 德州仪器半导体技术（上海）有限公司