

PMP40285 Test Results

1. Efficiency

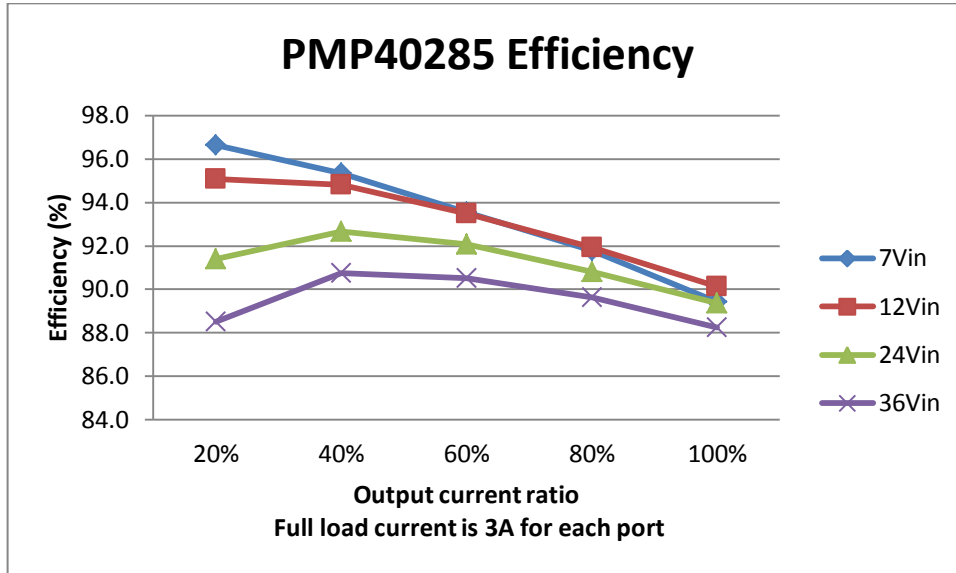
Test at board end

Vin(V)	Iin(mA)	Vbus1(V)	Io1(A)	Vbus2(V)	Io2(A)	Effi.(%)
7.01	0.907	5.106	0.603	5.109	0.600	96.6
6.96	1.840	5.086	1.200	5.094	1.199	95.3
7.01	2.779	5.064	1.801	5.063	1.798	93.5
6.96	3.790	5.039	2.401	5.047	2.401	91.8
7.01	4.796	5.008	3.000	5.008	3.001	89.4

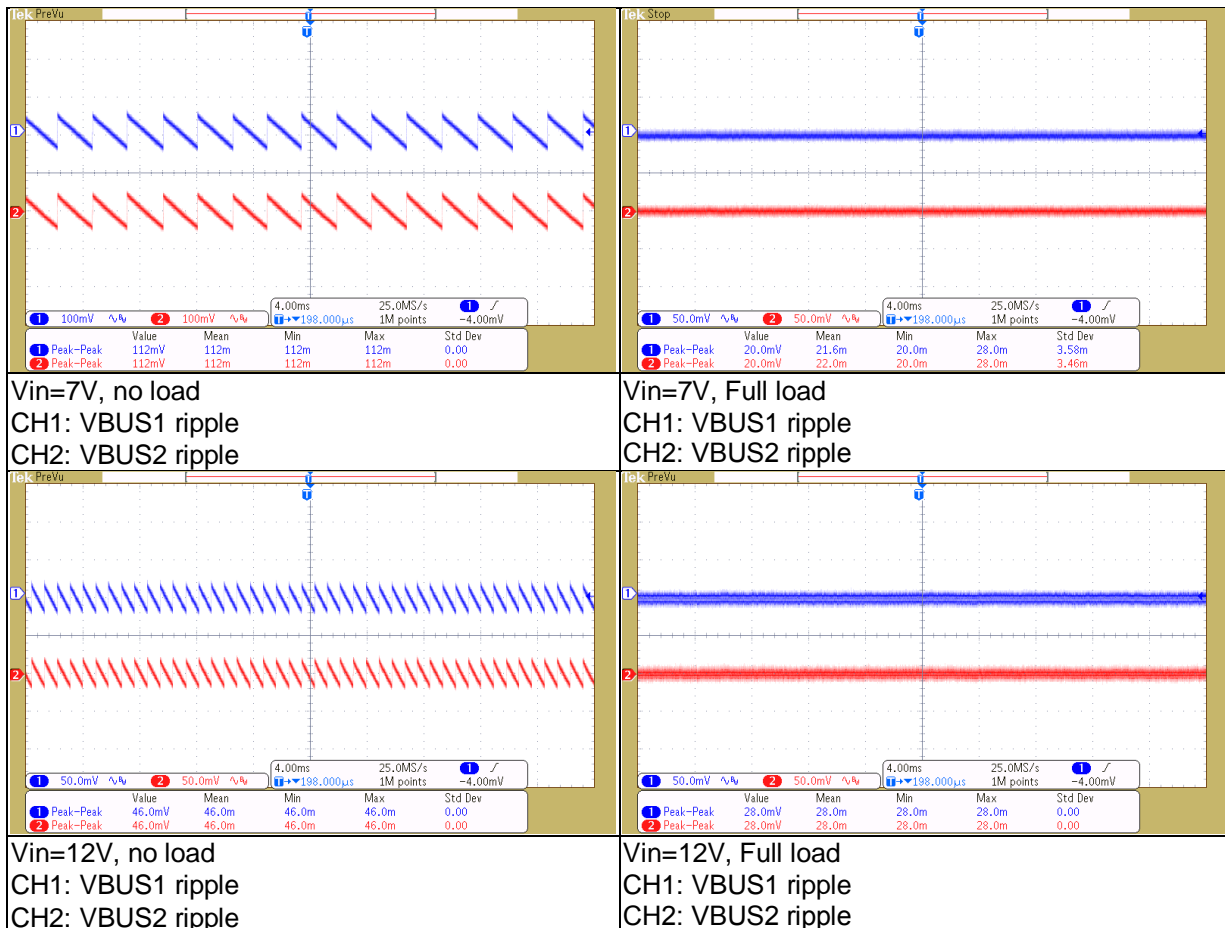
Vin(V)	Iin(mA)	Vbus1(V)	Io1(A)	Vbus2(V)	Io2(A)	Effi.(%)
12.01	0.538	5.106	0.603	5.109	0.599	95.1
11.98	1.076	5.085	1.201	5.102	1.199	94.8
12.00	1.626	5.064	1.801	5.070	1.798	93.5
12.00	2.194	5.039	2.400	5.047	2.401	91.9
12.00	2.782	5.010	3.000	5.016	3.001	90.1

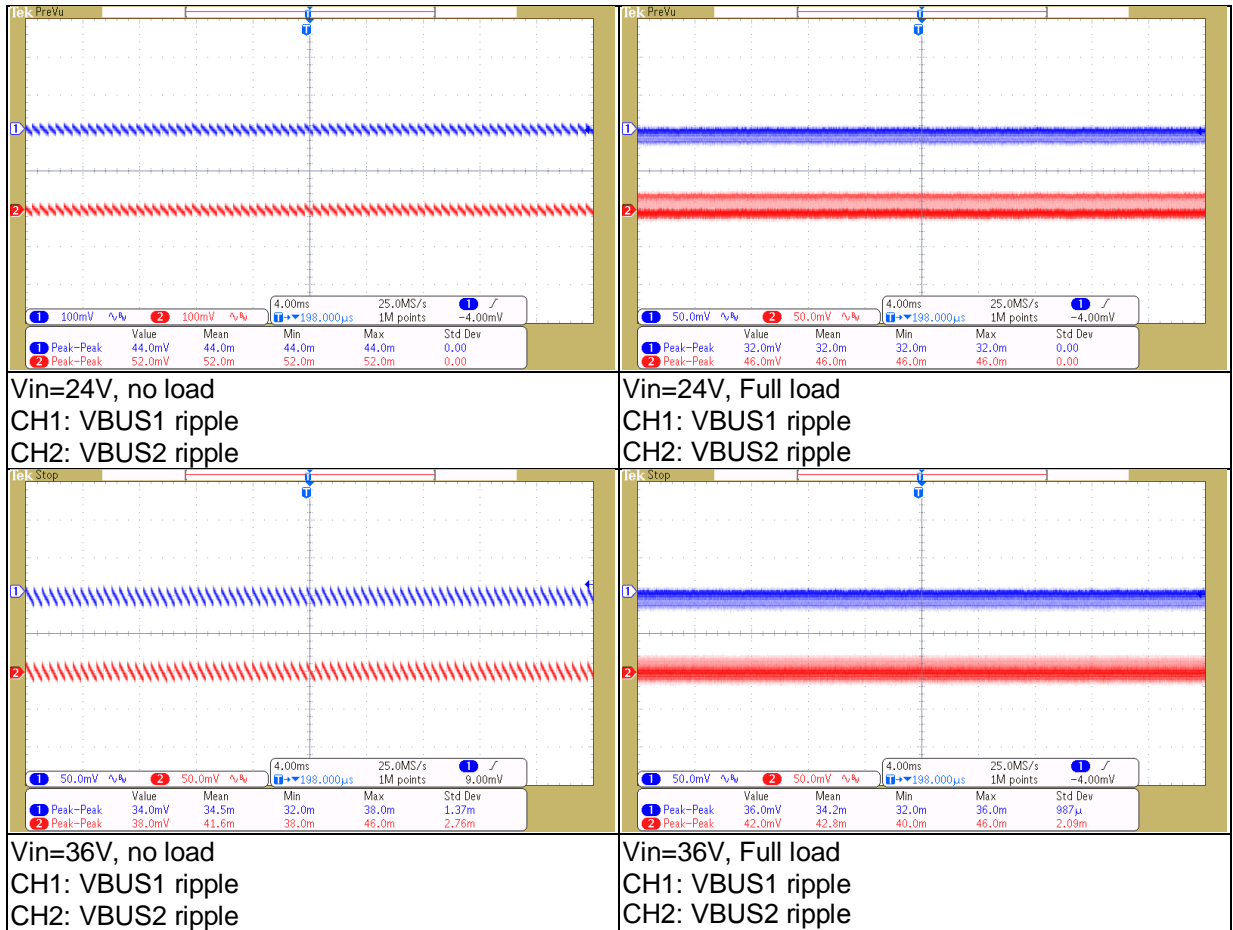
Vin(V)	Iin(mA)	Vbus1(V)	Io1(A)	Vbus2(V)	Io2(A)	Effi.(%)
23.99	0.280	5.104	0.603	5.109	0.600	91.4
24.02	0.549	5.084	1.201	5.094	1.199	92.7
24.01	0.825	5.063	1.801	5.070	1.798	92.1
24.00	1.110	5.036	2.401	5.039	2.401	90.8
23.98	1.403	5.008	3.000	5.016	3.000	89.4

Vin(V)	Iin(mA)	Vbus1(V)	Io1(A)	Vbus2(V)	Io2(A)	Effi.(%)
35.99	0.193	5.105	0.603	5.109	0.599	88.5
35.98	0.374	5.083	1.201	5.094	1.199	90.7
35.98	0.560	5.061	1.801	5.063	1.798	90.5
35.97	0.751	5.034	2.400	5.047	2.401	89.6
35.96	0.948	5.005	3.000	5.016	3.001	88.2

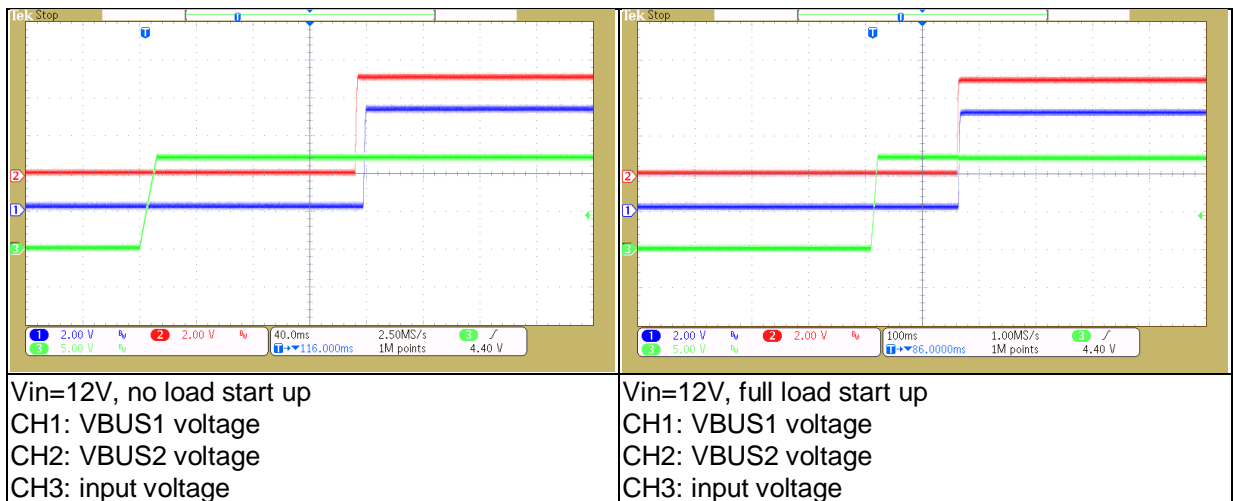


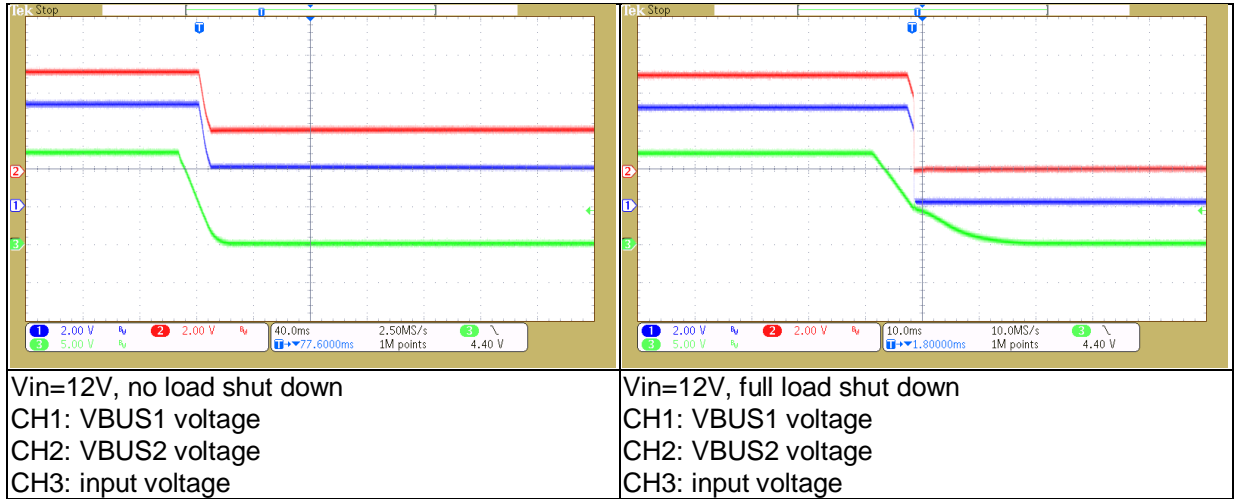
2. Ripple and noise



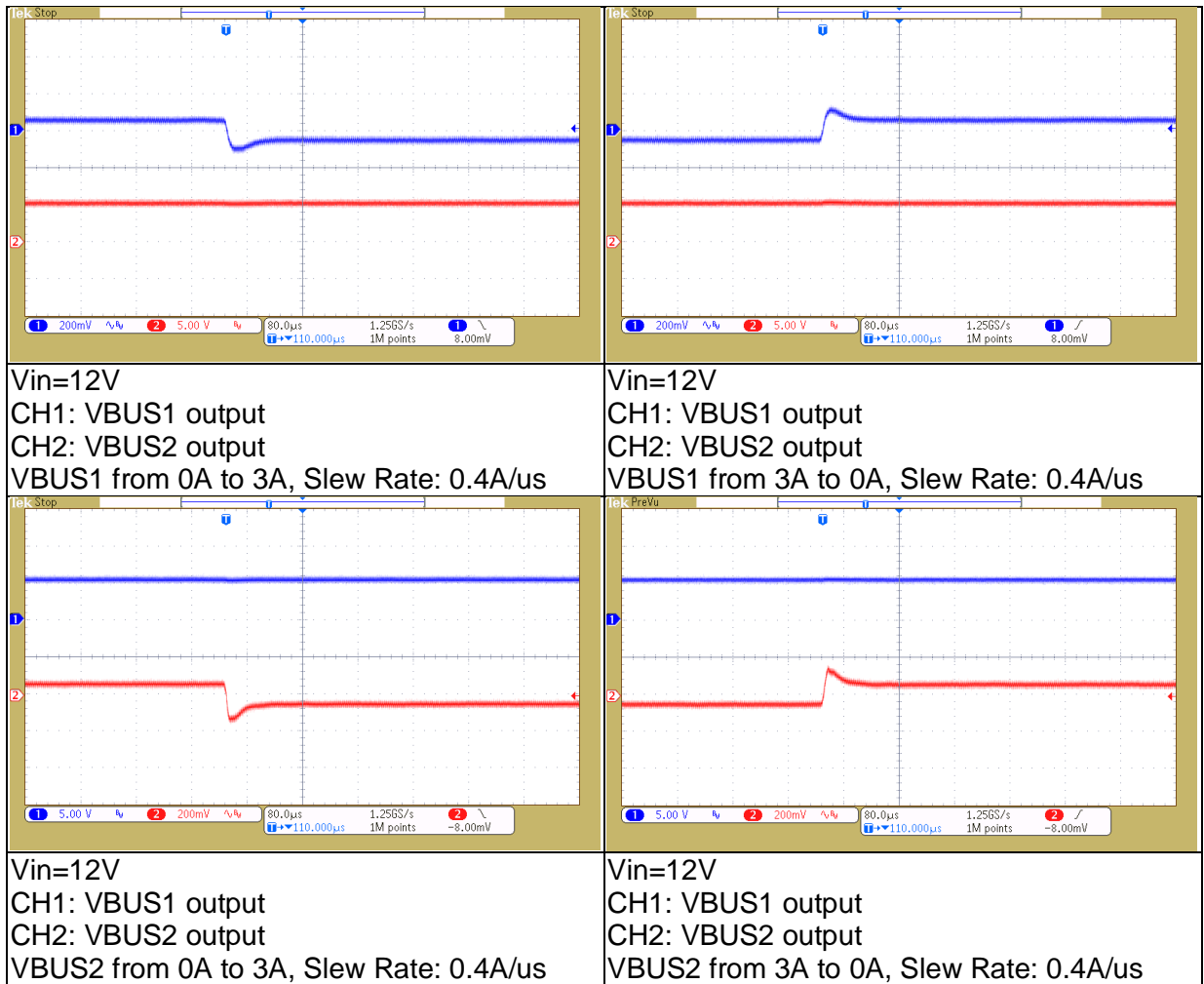


3. Start and Shut down

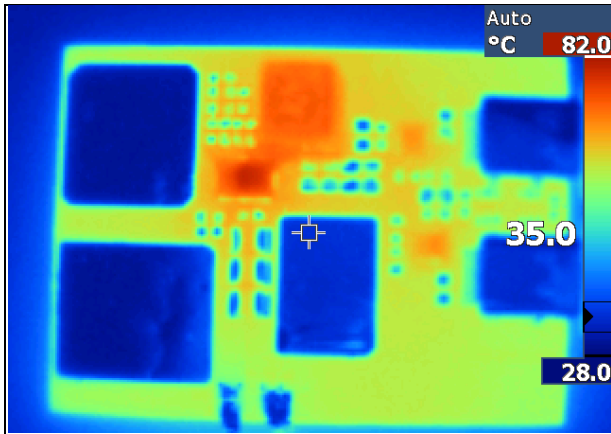




4. Load Transient



5. Thermal



Vin=12V
Output current is 3A for each port

IMPORTANT NOTICE AND DISCLAIMER

TI PROVIDES TECHNICAL AND RELIABILITY DATA (INCLUDING DATASHEETS), DESIGN RESOURCES (INCLUDING REFERENCE DESIGNS), APPLICATION OR OTHER DESIGN ADVICE, WEB TOOLS, SAFETY INFORMATION, AND OTHER RESOURCES "AS IS" AND WITH ALL FAULTS, AND DISCLAIMS ALL WARRANTIES, EXPRESS AND IMPLIED, INCLUDING WITHOUT LIMITATION ANY IMPLIED WARRANTIES OF MERCHANTABILITY, FITNESS FOR A PARTICULAR PURPOSE OR NON-INFRINGEMENT OF THIRD PARTY INTELLECTUAL PROPERTY RIGHTS.

These resources are intended for skilled developers designing with TI products. You are solely responsible for (1) selecting the appropriate TI products for your application, (2) designing, validating and testing your application, and (3) ensuring your application meets applicable standards, and any other safety, security, or other requirements. These resources are subject to change without notice. TI grants you permission to use these resources only for development of an application that uses the TI products described in the resource. Other reproduction and display of these resources is prohibited. No license is granted to any other TI intellectual property right or to any third party intellectual property right. TI disclaims responsibility for, and you will fully indemnify TI and its representatives against, any claims, damages, costs, losses, and liabilities arising out of your use of these resources.

TI's products are provided subject to TI's Terms of Sale (<https://www.ti.com/legal/termsofsale.html>) or other applicable terms available either on [ti.com](https://www.ti.com) or provided in conjunction with such TI products. TI's provision of these resources does not expand or otherwise alter TI's applicable warranties or warranty disclaimers for TI products.

Mailing Address: Texas Instruments, Post Office Box 655303, Dallas, Texas 75265
Copyright © 2021, Texas Instruments Incorporated