



TI Designs: TIDA-00141

Automotive Brushed Motor Drive for Flip Up Displays - Test Data

This document shares the tests results of the logic board and the TPS65320-Q1 EVM with a MingHon BDC motor (FF-050SK-11170). The hardware on the logic board includes the DRV8832-Q1.

The data is structured into three main categories:

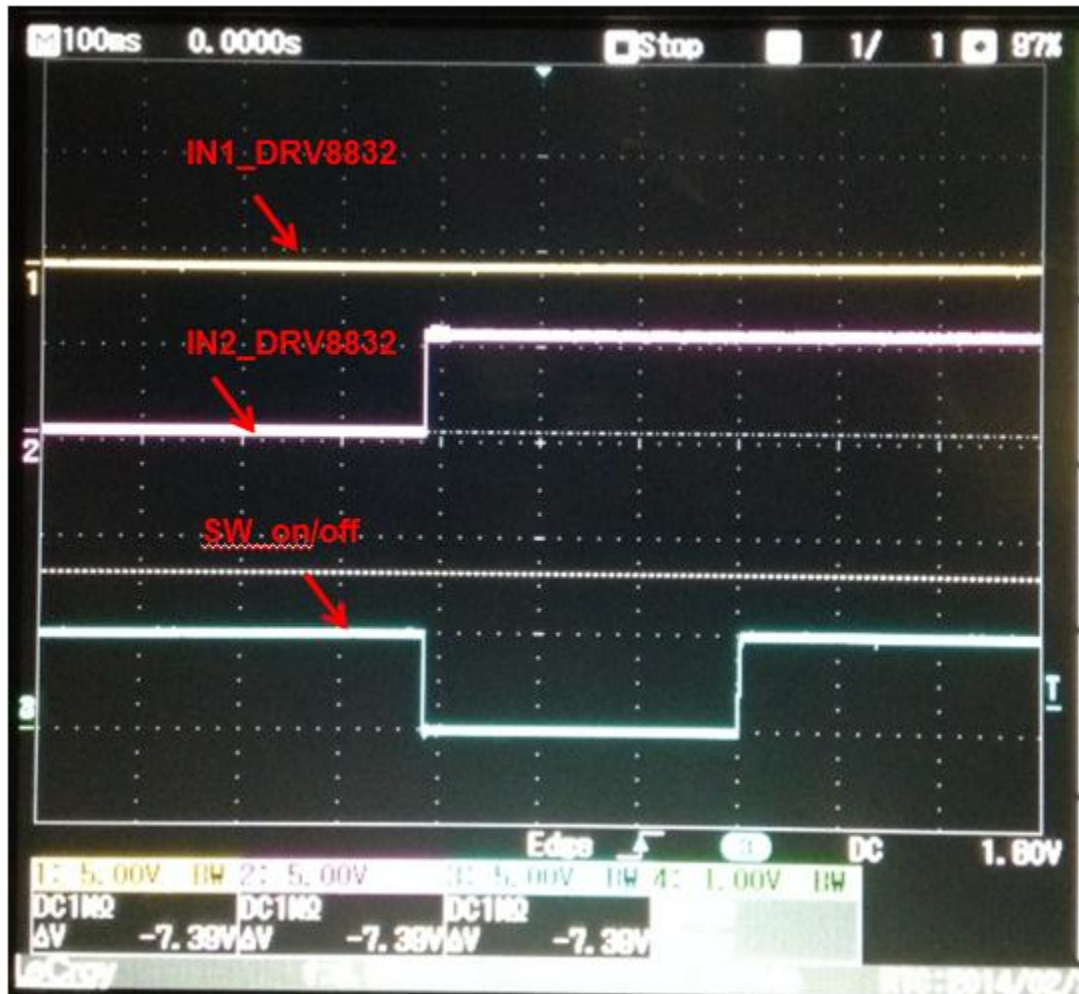
1. Single Motor Bi Directional Control
2. Fault detection
3. Thermal Image of Device Under Operation

Section 1:

Motor is connected between OUT1 and OUT2 (J11) of logic board. The data demonstrates the logic behavior at IN1 and IN2 of the DRV8832-Q1 when the motor is commanded to OPEN and CLOSE as per the following table. The duty cycle is not varied. (Speed is not varied).

The following table shows two scenarios where the flip up display is opening. In the first row, no limit switch is pressed. In the second row, the limit switch “Lim_C” is pressed.

Switch action	Sw_on/off	nFault	CLK_U6	Q_U6	/Q_U6	Q+_U6	Q_U3	Lim_O	Lim_C	IN1	IN2	Buck_EN	What do we need to do?(corresponds with Q_U6)
sw pr	0	1	1	1	0	0	1	0	0	0	1	1	drive open
sw pr	0	1	1	1	0	0	1	0	1	0	1	1	drive open



In the above figure, the signals illustrate the situation when the flip up display is commanded to OPEN. The user switch (SW_on/off) is pressed, IN1 is low, IN2 is high, and the flip up display opens. The oscilloscope is set to trigger off of the user switch (SW_on/off).

The following table shows two scenarios where the flip up display is closing. In the first row, no limit switch is pressed. In the second row, the limit switch “Lim_O” is pressed.

Switch action	Sw_on/of	nFault	CLK_U6	Q_U6	/Q_U6	Q+_U6	Q_U3	Lim_O	Lim_C	IN1	IN2	Buck_EN	What do we need to do?(corresponds with Q_U6)
sw pr	0	1	1	0	1	1	1	0	0	1	0	1	drive close
sw pr	0	1	1	0	1	1	1	1	0	1	0	1	drive close

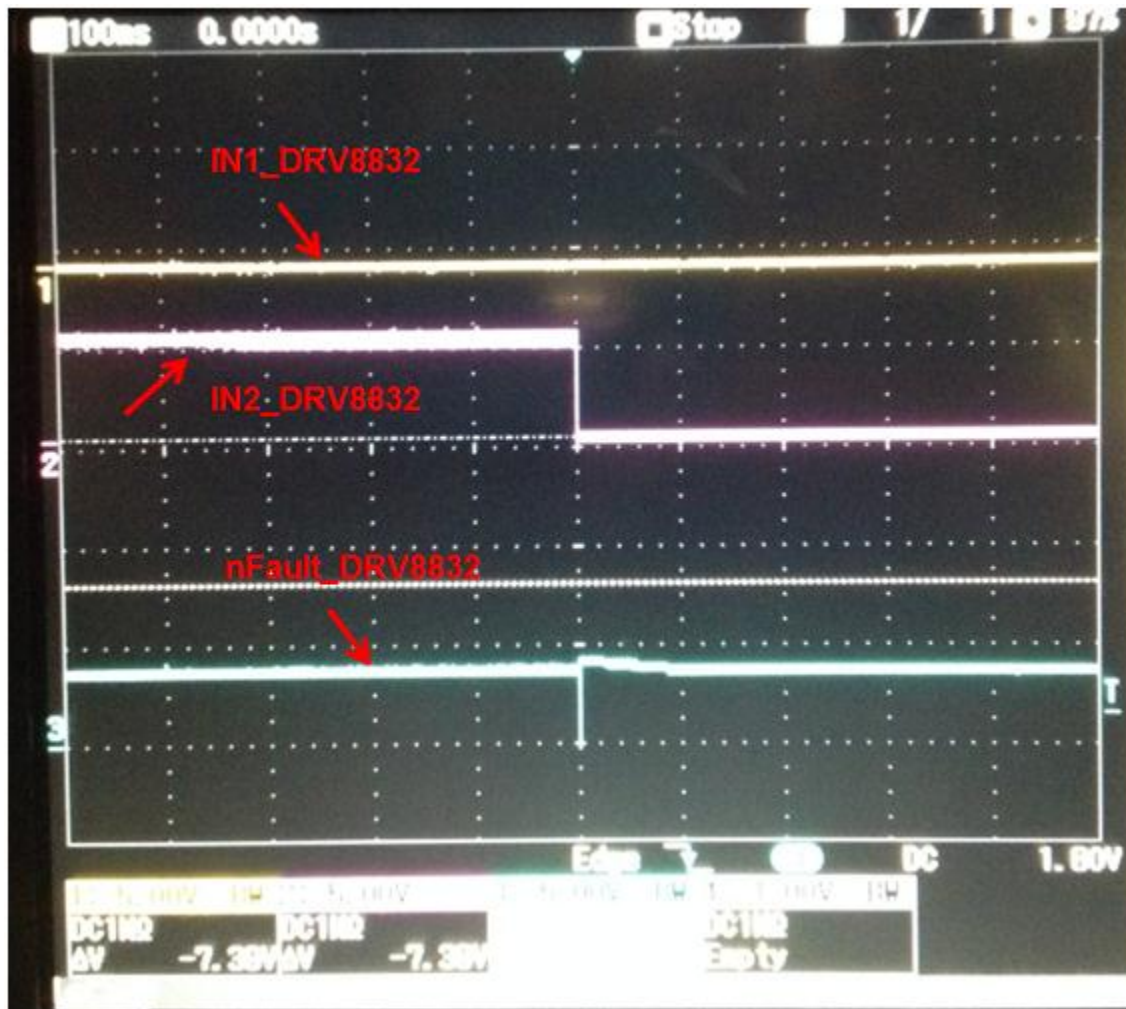


In the above figure, the signals illustrate the situation when the flip up display is commanded to CLOSE. The user switch (SW_on/off) is pressed, IN1 is high, IN2 is low, and the flip up display closes. The oscilloscope is set to trigger off of the user switch (SW_on/off).

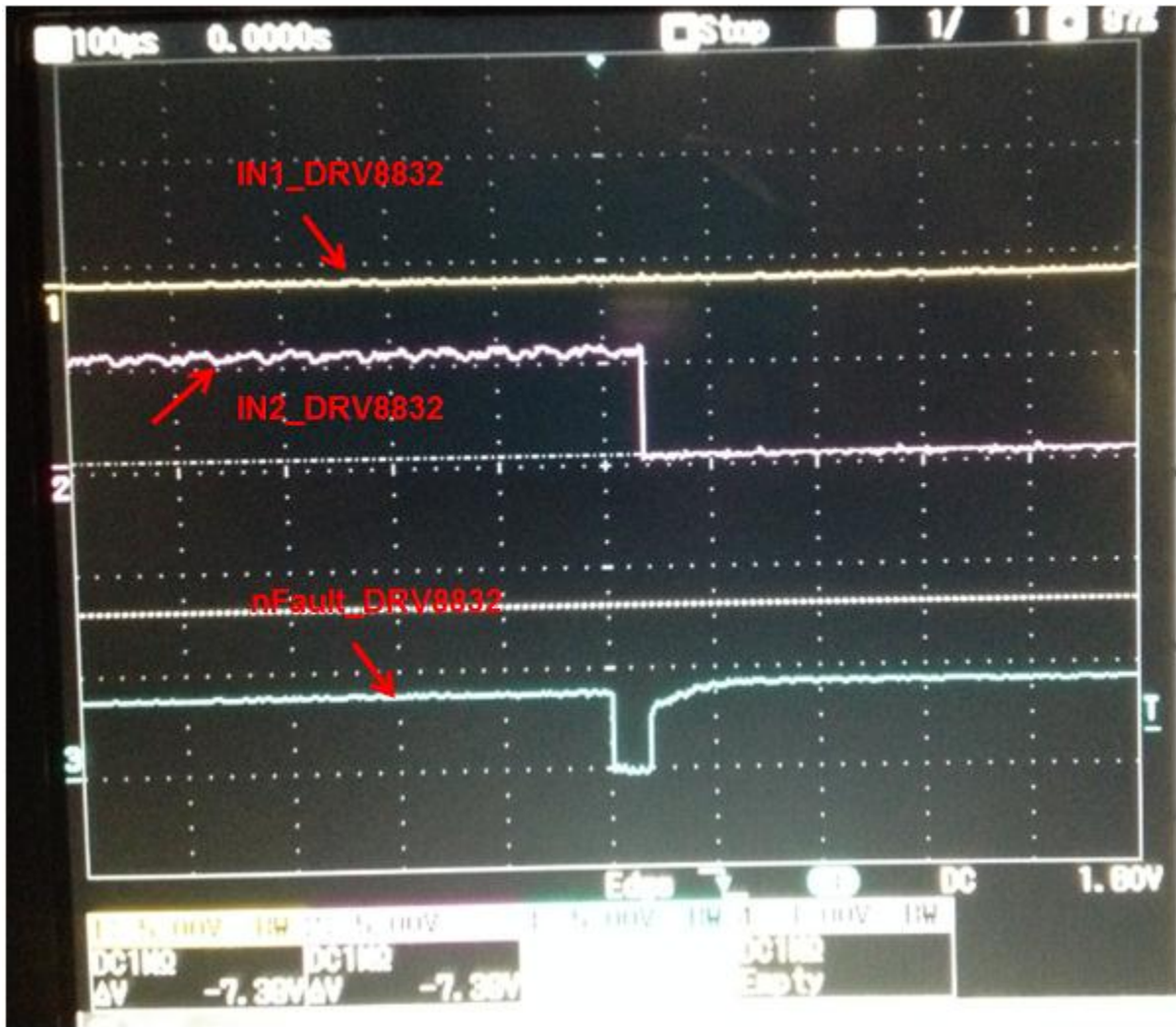
Section 2:

The following table shows a fault condition. If nFault is 0, the motor stops (IN1=0, IN2=0).

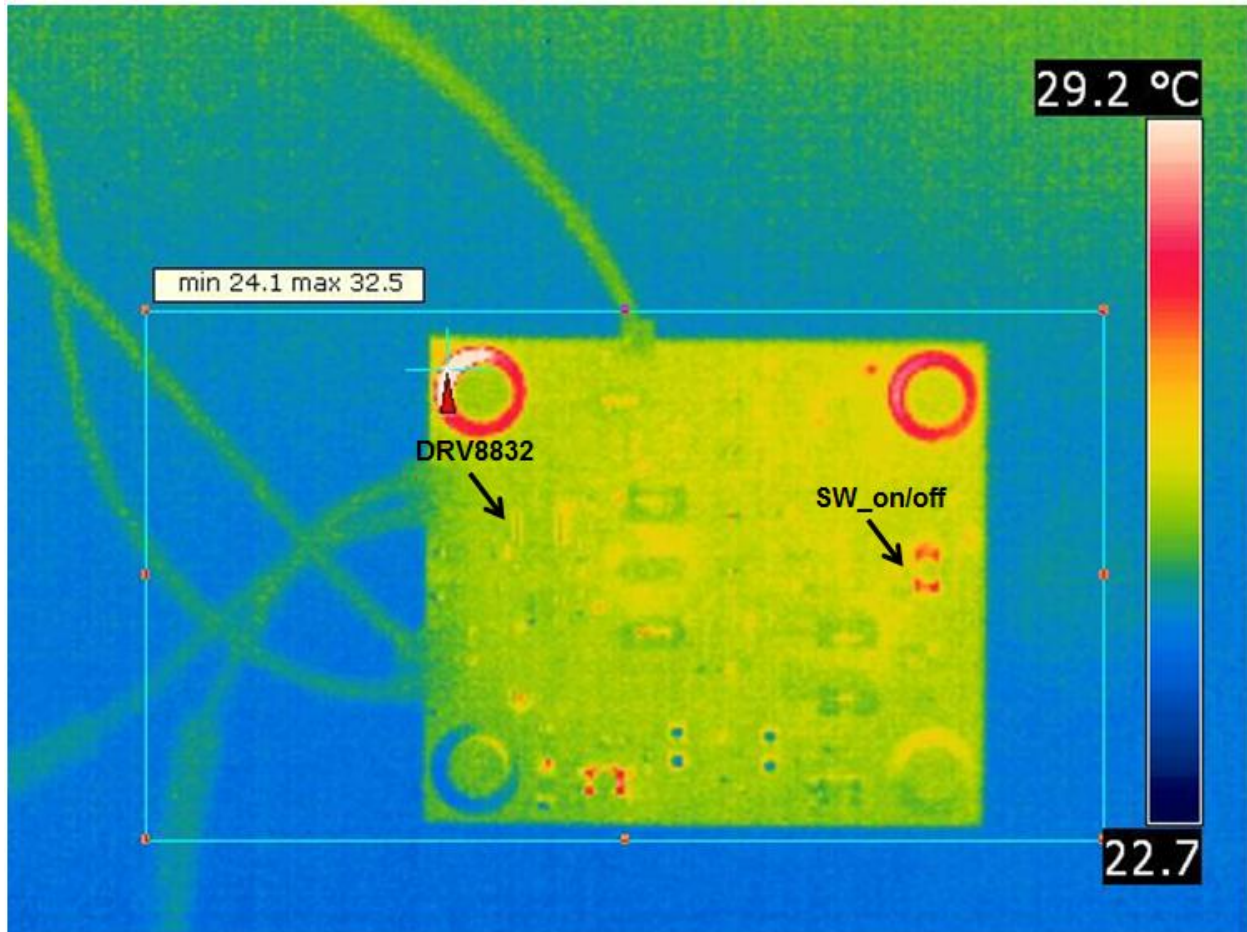
Switch action	Sw_on/of	nFault	CLK_U6	Q_U6	/Q_U6	Q+_U6	Q_U3	Lim_O	Lim_C	IN1	IN2	Buck_EN	What do we need to do?(corresponds with Q_U6)
	X	X	0	X	X	X	X	X	X	X	0	0	0 DRV8832 fault - turns off



In the above figure, the signals illustrate the situation when a fault occurs. A fault occurs when an overcurrent is reached. In this case, an obstacle (the user's hand) was put in front of the display as it was moving. The flip up display was opening (IN1=0, IN2=1), a fault occurred, then the display stopped moving (IN1=0, IN2=0). The oscilloscope is set to trigger off of the nFault signal.



The above figure is the same scope shot as the previous figure. This time, the signals are zoomed in to further emphasize the nFault signal.

Section 3:

The above thermal image was taken with a FLIR thermal camera. The flip up display was repeatedly opened and closed for 15 minutes before the thermal image was taken. The figure above shows most of the heat (red) dissipated through the ground pads in the corners. This is because the two red ground pads are closest to the DRV8832-Q1 and the user switch. The DRV8832-Q1 is the only component on the board to dissipate a significant amount of heat and the user switch is heated up through the user's touch.

IMPORTANT NOTICE FOR TI REFERENCE DESIGNS

Texas Instruments Incorporated ("TI") reference designs are solely intended to assist designers ("Buyers") who are developing systems that incorporate TI semiconductor products (also referred to herein as "components"). Buyer understands and agrees that Buyer remains responsible for using its independent analysis, evaluation and judgment in designing Buyer's systems and products.

TI reference designs have been created using standard laboratory conditions and engineering practices. **TI has not conducted any testing other than that specifically described in the published documentation for a particular reference design.** TI may make corrections, enhancements, improvements and other changes to its reference designs.

Buyers are authorized to use TI reference designs with the TI component(s) identified in each particular reference design and to modify the reference design in the development of their end products. HOWEVER, NO OTHER LICENSE, EXPRESS OR IMPLIED, BY ESTOPPEL OR OTHERWISE TO ANY OTHER TI INTELLECTUAL PROPERTY RIGHT, AND NO LICENSE TO ANY THIRD PARTY TECHNOLOGY OR INTELLECTUAL PROPERTY RIGHT, IS GRANTED HEREIN, including but not limited to any patent right, copyright, mask work right, or other intellectual property right relating to any combination, machine, or process in which TI components or services are used. Information published by TI regarding third-party products or services does not constitute a license to use such products or services, or a warranty or endorsement thereof. Use of such information may require a license from a third party under the patents or other intellectual property of the third party, or a license from TI under the patents or other intellectual property of TI.

TI REFERENCE DESIGNS ARE PROVIDED "AS IS". TI MAKES NO WARRANTIES OR REPRESENTATIONS WITH REGARD TO THE REFERENCE DESIGNS OR USE OF THE REFERENCE DESIGNS, EXPRESS, IMPLIED OR STATUTORY, INCLUDING ACCURACY OR COMPLETENESS. TI DISCLAIMS ANY WARRANTY OF TITLE AND ANY IMPLIED WARRANTIES OF MERCHANTABILITY, FITNESS FOR A PARTICULAR PURPOSE, QUIET ENJOYMENT, QUIET POSSESSION, AND NON-INFRINGEMENT OF ANY THIRD PARTY INTELLECTUAL PROPERTY RIGHTS WITH REGARD TO TI REFERENCE DESIGNS OR USE THEREOF. TI SHALL NOT BE LIABLE FOR AND SHALL NOT DEFEND OR INDEMNIFY BUYERS AGAINST ANY THIRD PARTY INFRINGEMENT CLAIM THAT RELATES TO OR IS BASED ON A COMBINATION OF COMPONENTS PROVIDED IN A TI REFERENCE DESIGN. IN NO EVENT SHALL TI BE LIABLE FOR ANY ACTUAL, SPECIAL, INCIDENTAL, CONSEQUENTIAL OR INDIRECT DAMAGES, HOWEVER CAUSED, ON ANY THEORY OF LIABILITY AND WHETHER OR NOT TI HAS BEEN ADVISED OF THE POSSIBILITY OF SUCH DAMAGES, ARISING IN ANY WAY OUT OF TI REFERENCE DESIGNS OR BUYER'S USE OF TI REFERENCE DESIGNS.

TI reserves the right to make corrections, enhancements, improvements and other changes to its semiconductor products and services per JESD46, latest issue, and to discontinue any product or service per JESD48, latest issue. Buyers should obtain the latest relevant information before placing orders and should verify that such information is current and complete. All semiconductor products are sold subject to TI's terms and conditions of sale supplied at the time of order acknowledgment.

TI warrants performance of its components to the specifications applicable at the time of sale, in accordance with the warranty in TI's terms and conditions of sale of semiconductor products. Testing and other quality control techniques for TI components are used to the extent TI deems necessary to support this warranty. Except where mandated by applicable law, testing of all parameters of each component is not necessarily performed.

TI assumes no liability for applications assistance or the design of Buyers' products. Buyers are responsible for their products and applications using TI components. To minimize the risks associated with Buyers' products and applications, Buyers should provide adequate design and operating safeguards.

Reproduction of significant portions of TI information in TI data books, data sheets or reference designs is permissible only if reproduction is without alteration and is accompanied by all associated warranties, conditions, limitations, and notices. TI is not responsible or liable for such altered documentation. Information of third parties may be subject to additional restrictions.

Buyer acknowledges and agrees that it is solely responsible for compliance with all legal, regulatory and safety-related requirements concerning its products, and any use of TI components in its applications, notwithstanding any applications-related information or support that may be provided by TI. Buyer represents and agrees that it has all the necessary expertise to create and implement safeguards that anticipate dangerous failures, monitor failures and their consequences, lessen the likelihood of dangerous failures and take appropriate remedial actions. Buyer will fully indemnify TI and its representatives against any damages arising out of the use of any TI components in Buyer's safety-critical applications.

In some cases, TI components may be promoted specifically to facilitate safety-related applications. With such components, TI's goal is to help enable customers to design and create their own end-product solutions that meet applicable functional safety standards and requirements. Nonetheless, such components are subject to these terms.

No TI components are authorized for use in FDA Class III (or similar life-critical medical equipment) unless authorized officers of the parties have executed an agreement specifically governing such use.

Only those TI components that TI has specifically designated as military grade or "enhanced plastic" are designed and intended for use in military/aerospace applications or environments. Buyer acknowledges and agrees that any military or aerospace use of TI components that have **not** been so designated is solely at Buyer's risk, and Buyer is solely responsible for compliance with all legal and regulatory requirements in connection with such use.

TI has specifically designated certain components as meeting ISO/TS16949 requirements, mainly for automotive use. In any case of use of non-designated products, TI will not be responsible for any failure to meet ISO/TS16949.