

Test Report

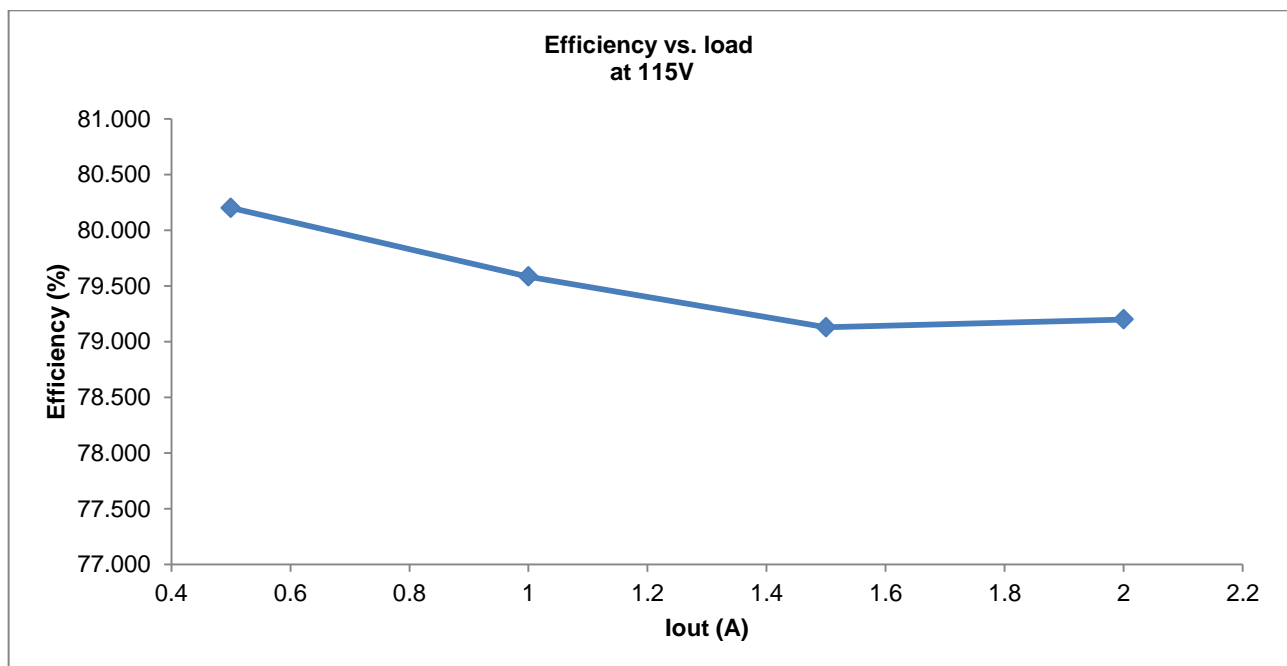
Control IC - Description

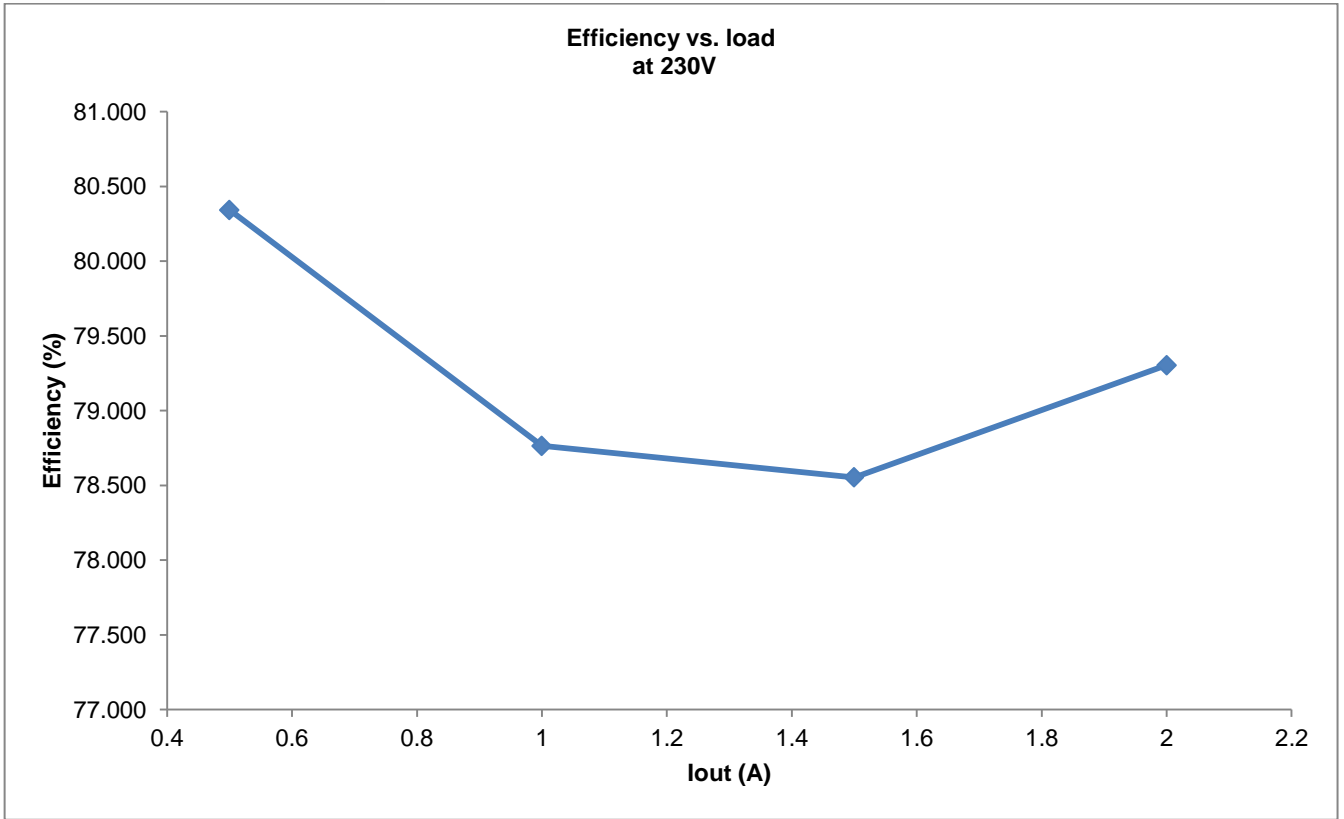
UCC28720

Test Notes

Average Efficiency Tests

Vin(V)	F(Hz)	Pin(W)	Iout(A)	Vout(V)	Pout(W)	Eff(%)	PF	Measured Avg Eff (%)
115	60	13.305	2.000	5.268	10.537	79.199	0.538	79.527
		9.895	1.500	5.218	7.830	79.128	0.509	
		6.487	1.000	5.161	5.162	79.583	0.466	
		3.184	0.500	5.103	2.553	80.200	0.410	
230	50	13.321	2.000	5.281	10.564	79.305	0.418	79.242
		9.976	1.500	5.223	7.836	78.554	0.394	
		6.568	1.000	5.171	5.173	78.765	0.368	
		3.178	0.500	5.103	2.553	80.343	0.337	

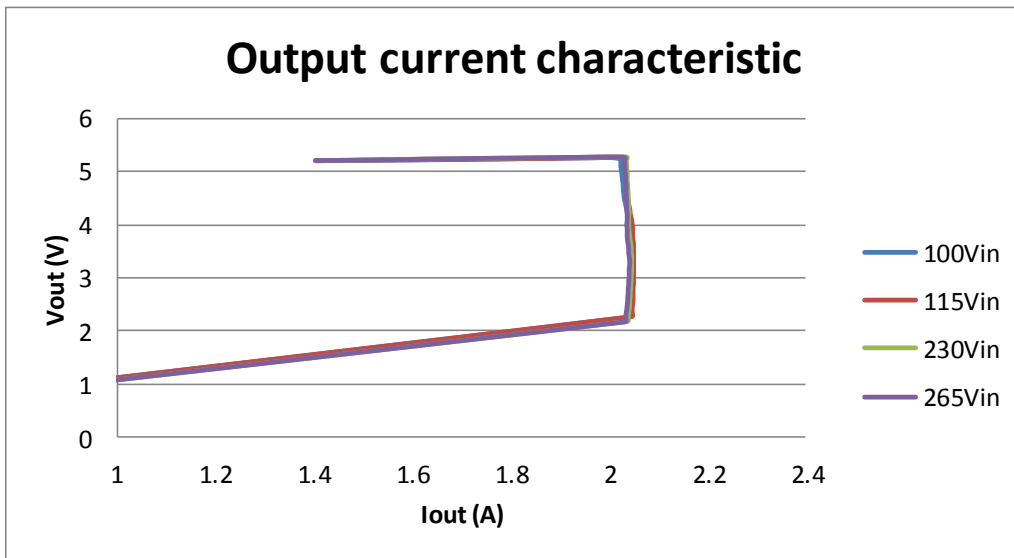




Output Current Characteristics

100Vin, lo	100Vin	115in, lo	115Vin	230Vin, lo	230Vin	265Vin, lo	265Vin
1.403	5.199	1.404	5.201	1.404	5.203	1.404	5.203
1.418	5.201	1.419	5.202	1.419	5.203	1.420	5.205
1.431	5.201	1.431	5.203	1.432	5.204	1.432	5.207
1.446	5.202	1.447	5.205	1.448	5.207	1.448	5.207
1.463	5.204	1.464	5.206	1.464	5.208	1.465	5.209
1.480	5.205	1.481	5.208	1.482	5.209	1.482	5.211
1.493	5.206	1.494	5.210	1.495	5.212	1.495	5.213
1.511	5.207	1.512	5.212	1.513	5.214	1.513	5.214
1.529	5.209	1.530	5.213	1.531	5.217	1.531	5.216
1.543	5.210	1.544	5.215	1.546	5.219	1.545	5.218
1.562	5.212	1.563	5.216	1.566	5.226	1.565	5.220
1.581	5.213	1.583	5.218	1.586	5.227	1.585	5.223
1.601	5.214	1.603	5.219	1.606	5.230	1.605	5.225
1.616	5.216	1.618	5.220	1.621	5.232	1.620	5.231
1.637	5.218	1.639	5.222	1.642	5.233	1.642	5.234
1.659	5.220	1.660	5.224	1.664	5.236	1.664	5.237
1.681	5.222	1.682	5.225	1.686	5.238	1.686	5.239
1.698	5.224	1.699	5.227	1.703	5.240	1.703	5.241
1.721	5.227	1.722	5.229	1.726	5.241	1.727	5.243
1.745	5.230	1.745	5.231	1.750	5.244	1.750	5.246
1.763	5.232	1.763	5.232	1.768	5.246	1.769	5.248
1.788	5.235	1.788	5.235	1.793	5.249	1.793	5.250
1.814	5.238	1.814	5.238	1.818	5.251	1.819	5.252
1.841	5.242	1.840	5.240	1.845	5.254	1.846	5.256
1.861	5.244	1.861	5.243	1.865	5.256	1.866	5.257
1.889	5.247	1.888	5.247	1.893	5.259	1.894	5.260
1.918	5.251	1.918	5.251	1.922	5.262	1.923	5.263
1.940	5.253	1.940	5.253	1.944	5.265	1.945	5.265
1.970	5.256	1.970	5.257	1.974	5.268	1.975	5.270
2.001	5.259	2.002	5.261	2.005	5.272	2.006	5.273
2.023	5.236	2.033	5.263	2.036	5.270	2.032	5.260
2.024	5.179	2.032	5.199	2.035	5.207	2.032	5.199
2.024	5.100	2.033	5.120	2.036	5.127	2.032	5.119
2.025	5.021	2.034	5.041	2.036	5.047	2.033	5.039
2.026	4.961	2.034	4.982	2.037	4.987	2.033	4.979
2.027	4.882	2.035	4.902	2.037	4.907	2.034	4.899
2.028	4.803	2.036	4.822	2.037	4.826	2.034	4.819
2.029	4.724	2.036	4.742	2.038	4.746	2.035	4.738
2.029	4.665	2.037	4.682	2.038	4.686	2.035	4.677
2.030	4.585	2.037	4.602	2.039	4.606	2.035	4.597
2.031	4.507	2.038	4.523	2.039	4.524	2.035	4.516
2.032	4.449	2.039	4.463	2.039	4.464	2.036	4.455
2.034	4.371	2.040	4.384	2.040	4.383	2.036	4.376
2.036	4.293	2.042	4.305	2.040	4.303	2.036	4.293
2.037	4.215	2.043	4.227	2.041	4.222	2.037	4.214
2.038	4.156	2.044	4.168	2.040	4.160	2.037	4.153
2.040	4.078	2.046	4.089	2.040	4.078	2.037	4.072
2.041	3.998	2.047	4.010	2.040	3.997	2.036	3.990
2.041	3.938	2.048	3.950	2.040	3.936	2.037	3.929
2.041	3.856	2.048	3.869	2.041	3.855	2.037	3.848
2.042	3.776	2.048	3.788	2.042	3.775	2.037	3.767

2.043	3.695	2.049	3.707	2.043	3.696	2.038	3.688
2.043	3.635	2.050	3.646	2.044	3.636	2.039	3.628
2.043	3.553	2.050	3.565	2.045	3.556	2.040	3.547
2.043	3.472	2.050	3.483	2.045	3.475	2.040	3.467
2.043	3.411	2.050	3.422	2.046	3.415	2.041	3.407
2.043	3.329	2.050	3.340	2.046	3.333	2.042	3.326
2.044	3.248	2.050	3.258	2.046	3.252	2.042	3.245
2.044	3.167	2.050	3.176	2.046	3.170	2.041	3.162
2.044	3.105	2.050	3.115	2.046	3.108	2.041	3.101
2.044	3.023	2.050	3.033	2.045	3.026	2.041	3.019
2.044	2.942	2.050	2.951	2.045	2.944	2.040	2.936
2.044	2.880	2.050	2.889	2.044	2.881	2.040	2.875
2.044	2.798	2.049	2.806	2.044	2.799	2.039	2.793
2.044	2.717	2.049	2.724	2.043	2.716	2.039	2.710
2.043	2.635	2.049	2.642	2.043	2.634	2.038	2.628
2.043	2.573	2.049	2.580	2.042	2.572	2.038	2.566
2.042	2.491	2.048	2.497	2.042	2.490	2.037	2.484
2.042	2.408	2.047	2.415	2.041	2.407	2.036	2.401
2.042	2.347	2.047	2.353	2.040	2.345	2.035	2.340
2.041	2.264	2.046	2.270	2.039	2.262	2.034	2.257
0.001	0.038	0.002	0.038	2.037	2.179	2.033	2.174
0.001	0.037	0.001	0.037	0.002	0.037	0.004	0.039
0.002	0.037	0.001	0.037	0.001	0.037	0.000	0.037
0.000	0.000	0.000	0.000	0.000	0.000	0.000	0.000

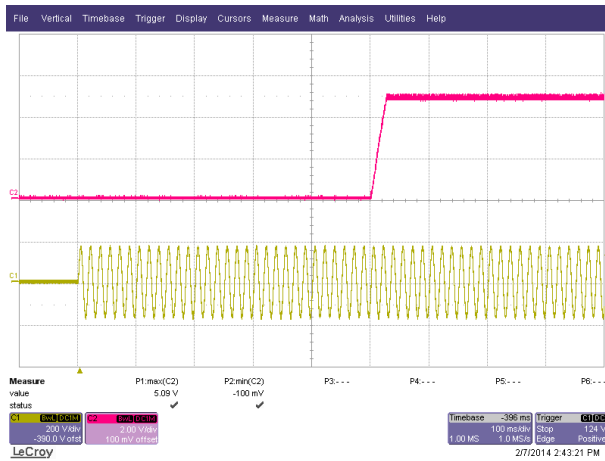


No Load Power

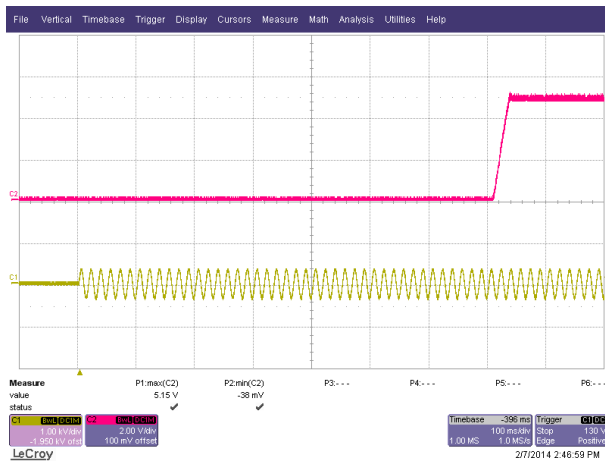
Vin	Pin(mW)
85	12.45
115	12.72
230	15.38
265	16.68

Startup

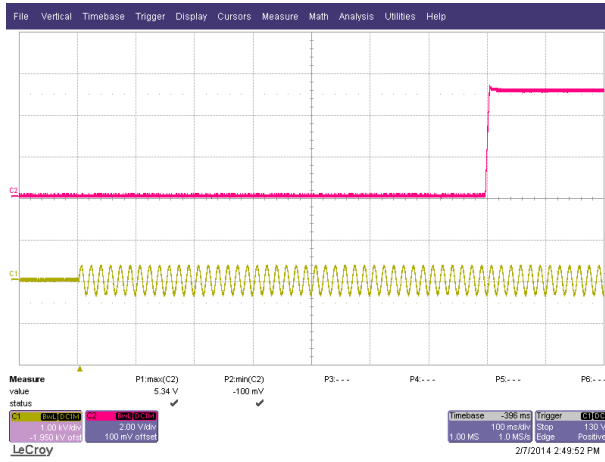
- 120V 1.5A



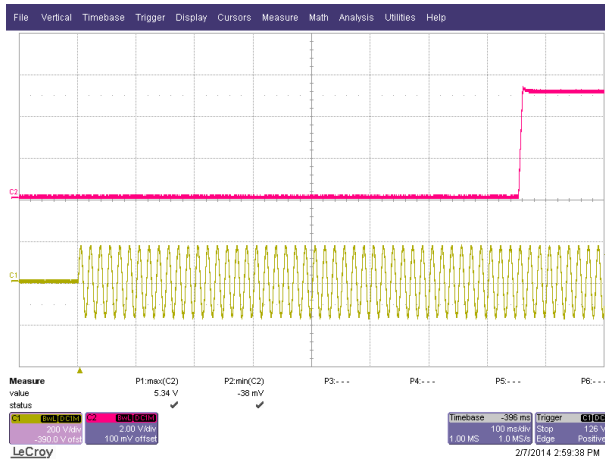
- 240V 1.5A



- 240V No Load



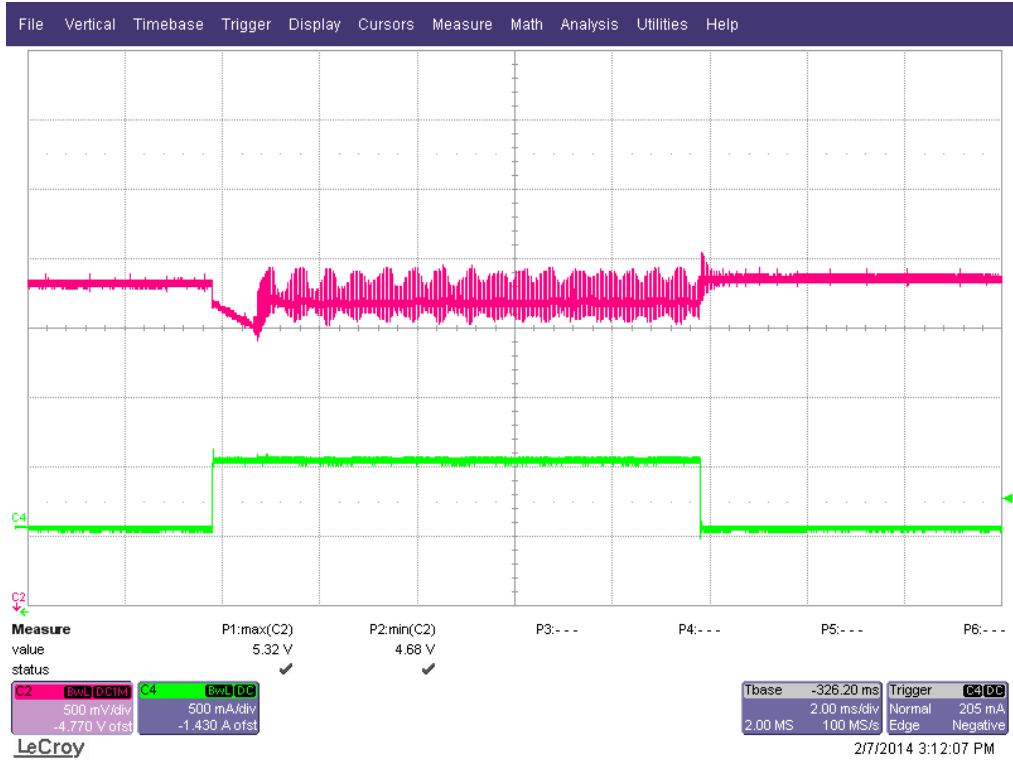
- 120V No Load



Load Transient: 0 to 500mA 120Vac

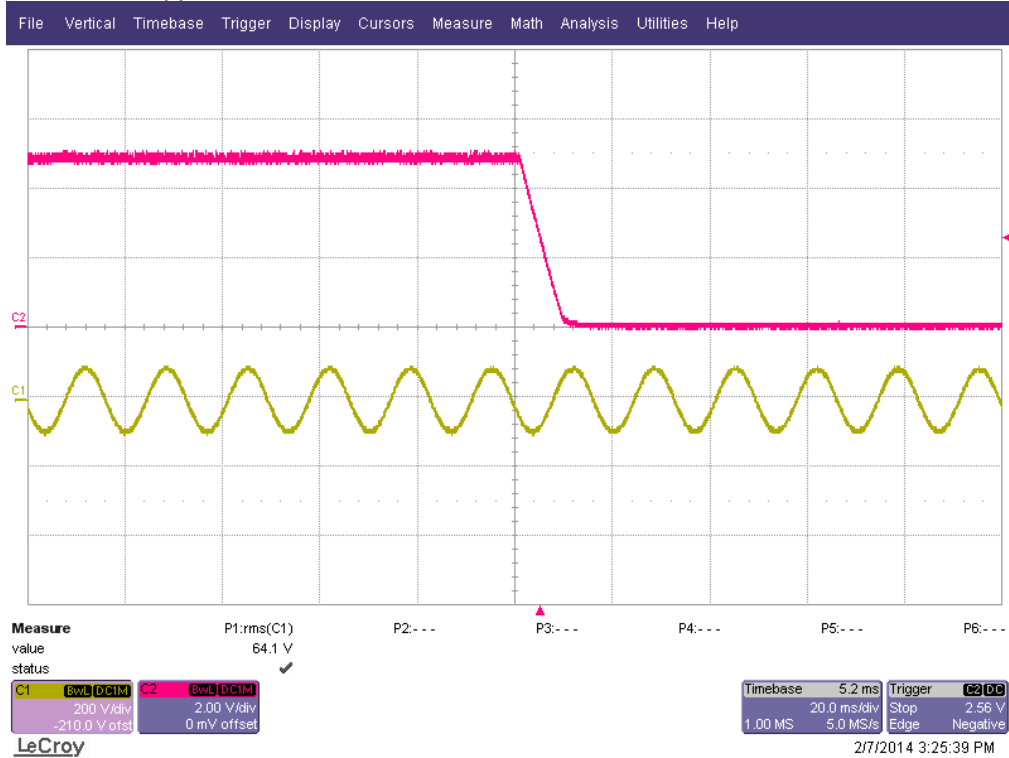


240Vac



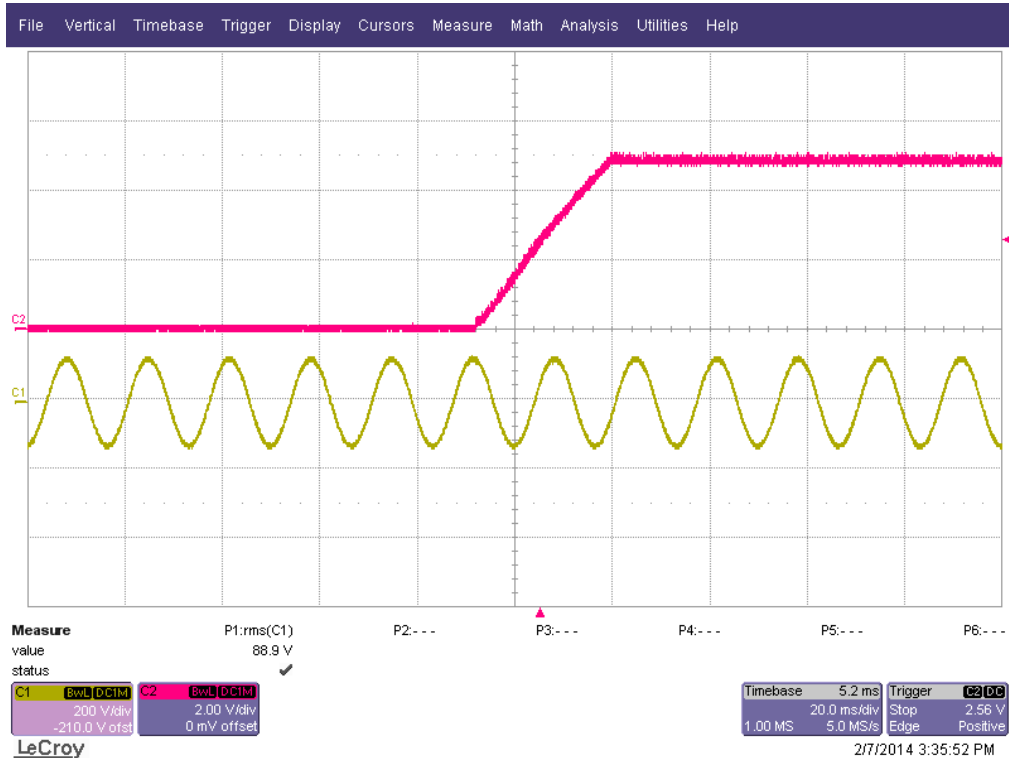
Brown out

Vin ramped from 120Vac to 0Vac in 15 seconds
Turns off at approx. 64Vac



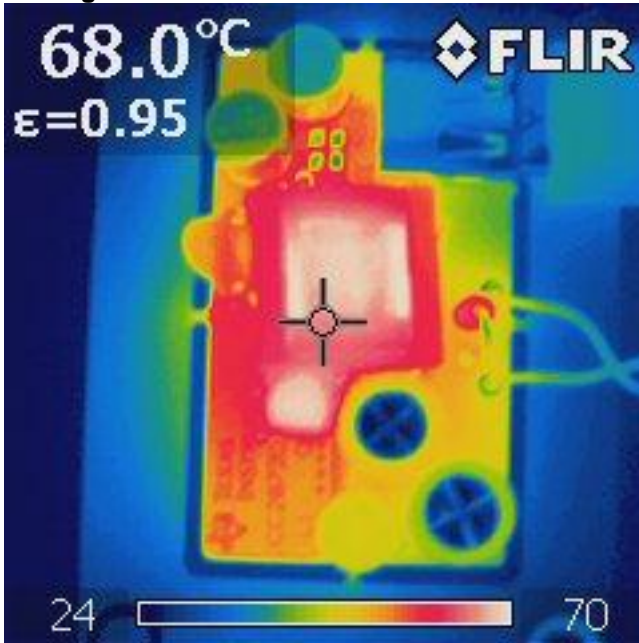
Brown in

Vin ramped from 0Vac to 120Vac in 15 seconds
Turns on at about 88Vac

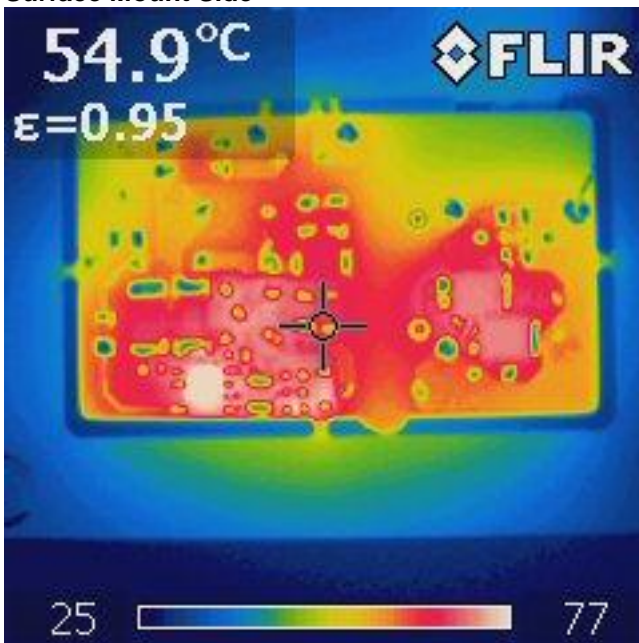


Infra-Red Thermal Images

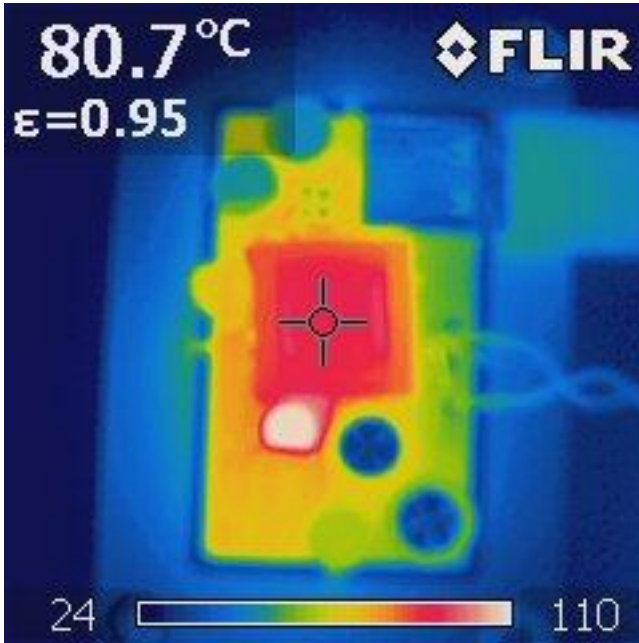
90VAC 2A LOAD
Through Hole Side



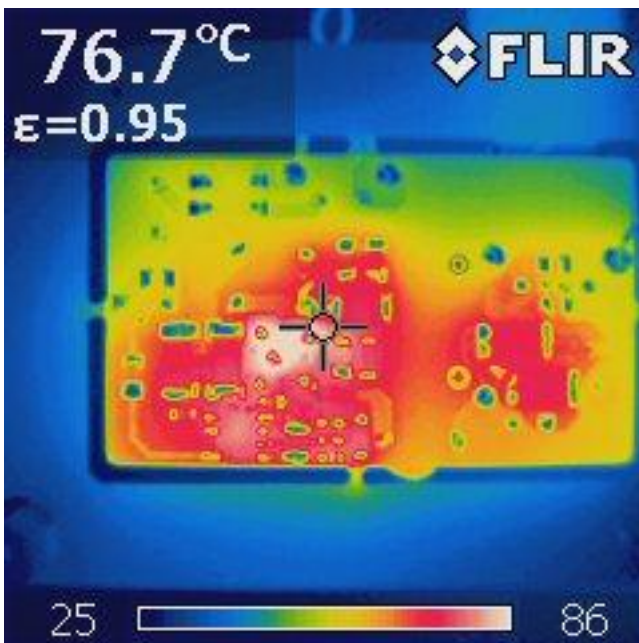
Surface Mount Side



265VAC 2A LOAD
Through Hole Side

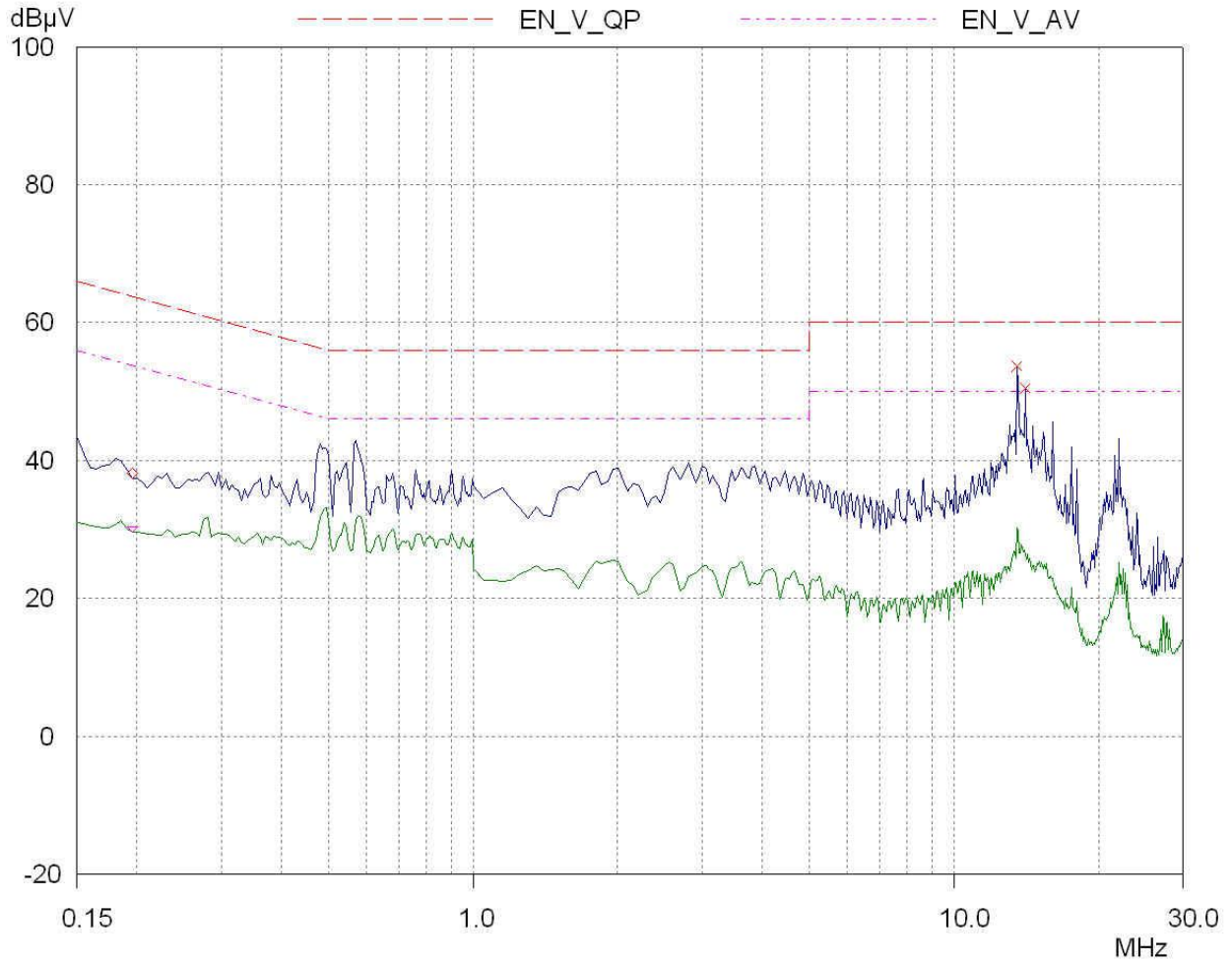


Surface Mount Side

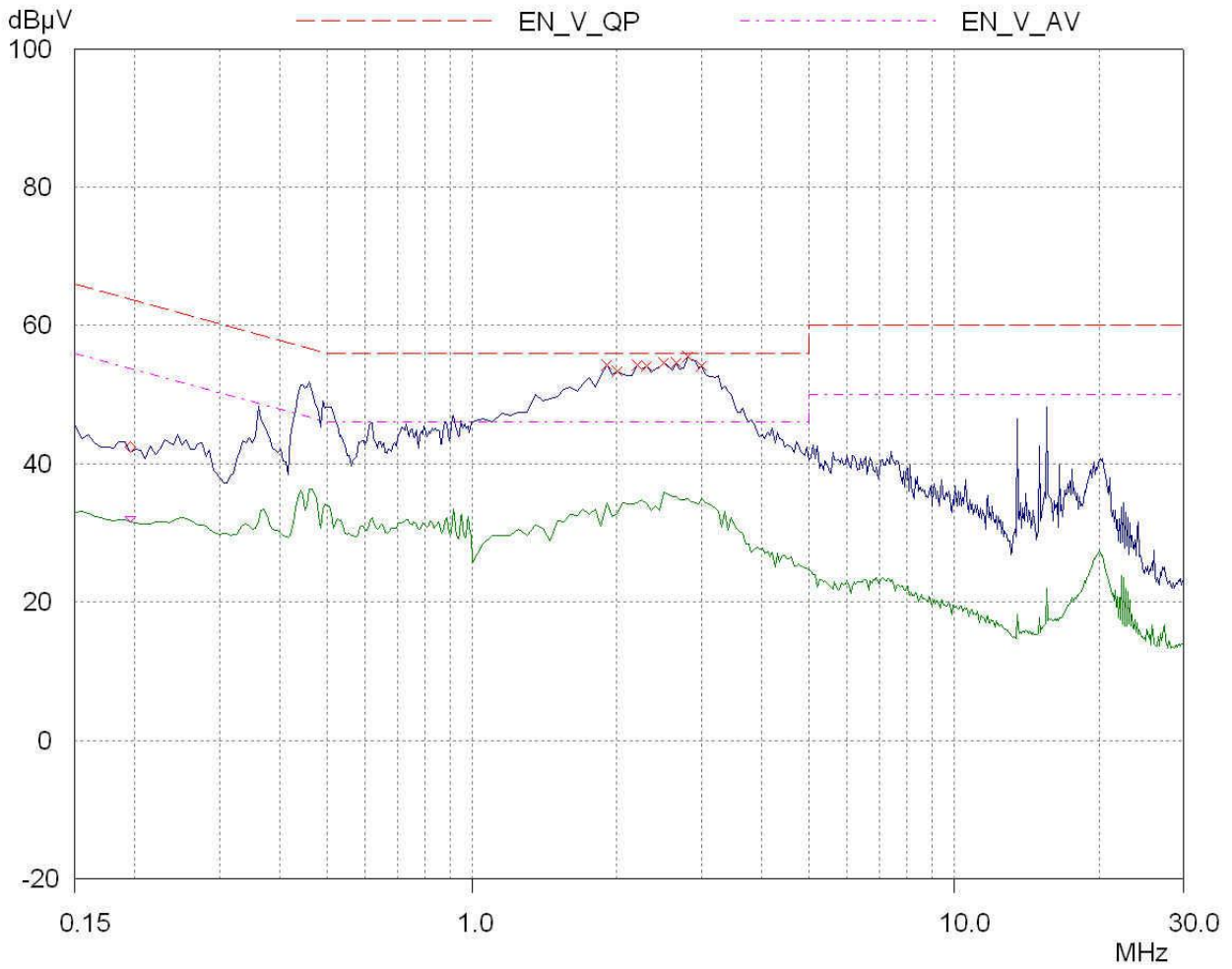


EMI

- **240Vac Load Ungrounded**



- **240Vac Load Grounded**



IMPORTANT NOTICE AND DISCLAIMER

TI PROVIDES TECHNICAL AND RELIABILITY DATA (INCLUDING DATASHEETS), DESIGN RESOURCES (INCLUDING REFERENCE DESIGNS), APPLICATION OR OTHER DESIGN ADVICE, WEB TOOLS, SAFETY INFORMATION, AND OTHER RESOURCES "AS IS" AND WITH ALL FAULTS, AND DISCLAIMS ALL WARRANTIES, EXPRESS AND IMPLIED, INCLUDING WITHOUT LIMITATION ANY IMPLIED WARRANTIES OF MERCHANTABILITY, FITNESS FOR A PARTICULAR PURPOSE OR NON-INFRINGEMENT OF THIRD PARTY INTELLECTUAL PROPERTY RIGHTS.

These resources are intended for skilled developers designing with TI products. You are solely responsible for (1) selecting the appropriate TI products for your application, (2) designing, validating and testing your application, and (3) ensuring your application meets applicable standards, and any other safety, security, or other requirements. These resources are subject to change without notice. TI grants you permission to use these resources only for development of an application that uses the TI products described in the resource. Other reproduction and display of these resources is prohibited. No license is granted to any other TI intellectual property right or to any third party intellectual property right. TI disclaims responsibility for, and you will fully indemnify TI and its representatives against, any claims, damages, costs, losses, and liabilities arising out of your use of these resources.

TI's products are provided subject to TI's Terms of Sale (<https://www.ti.com/legal/termsofsale.html>) or other applicable terms available either on [ti.com](https://www.ti.com) or provided in conjunction with such TI products. TI's provision of these resources does not expand or otherwise alter TI's applicable warranties or warranty disclaimers for TI products.

Mailing Address: Texas Instruments, Post Office Box 655303, Dallas, Texas 75265
Copyright © 2021, Texas Instruments Incorporated