

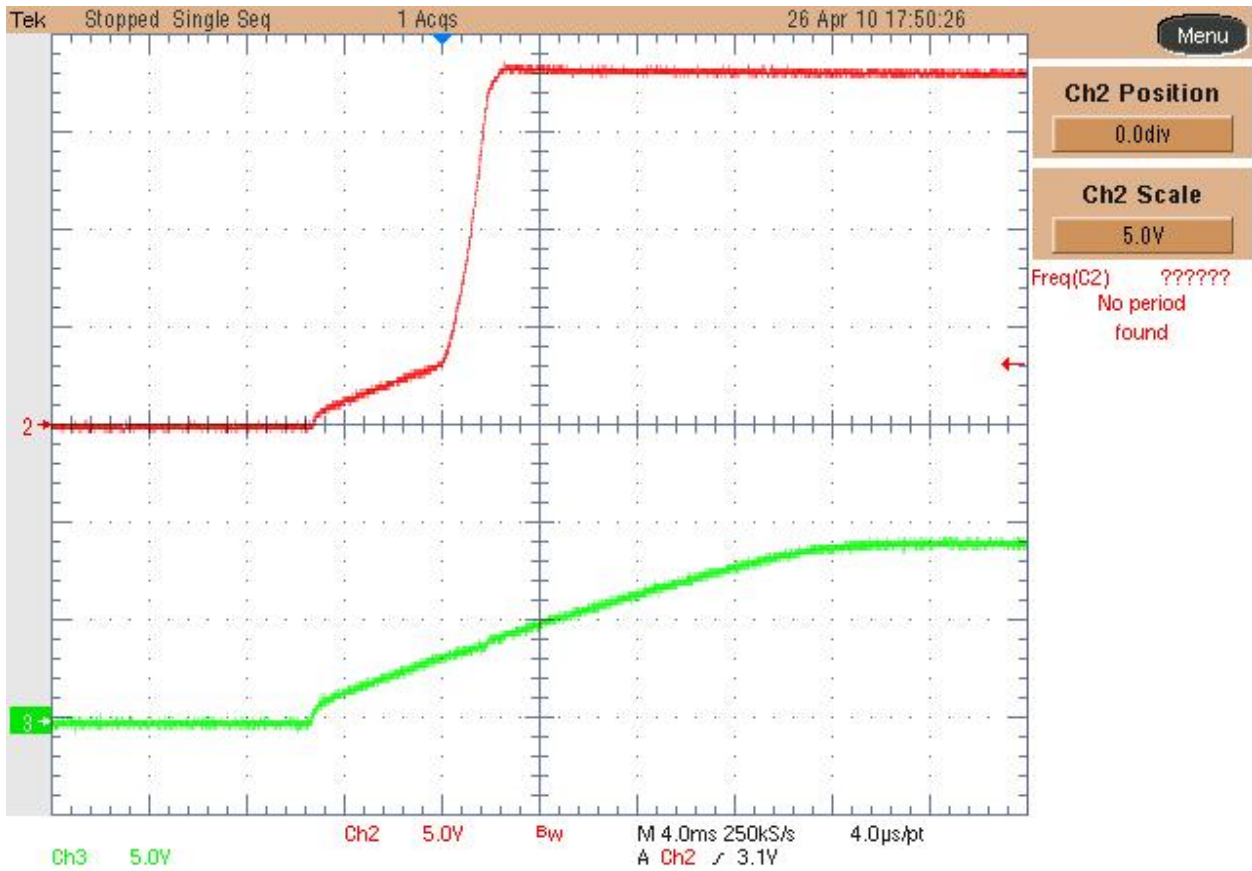
1. Startup

The output voltage at startup is shown in the images below. The images were taken in three conditions: 9V, No Load, 9V, Full Load and 13V, Full Load.

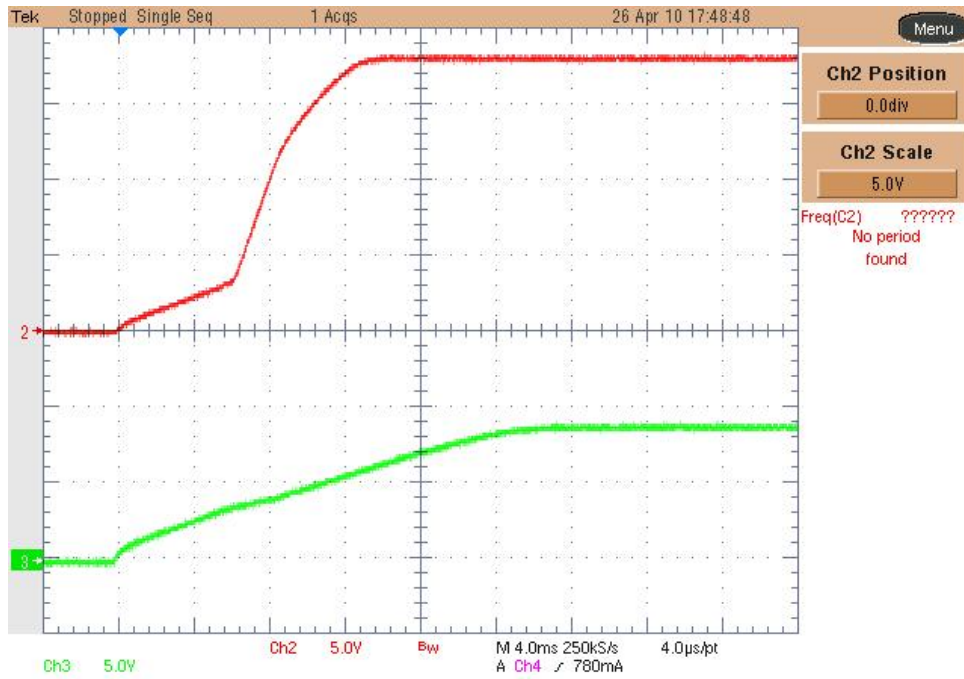
Channel 2: Output voltage (5 V/div, 4msec/div).

Channel 3: Input voltage (5V/div).

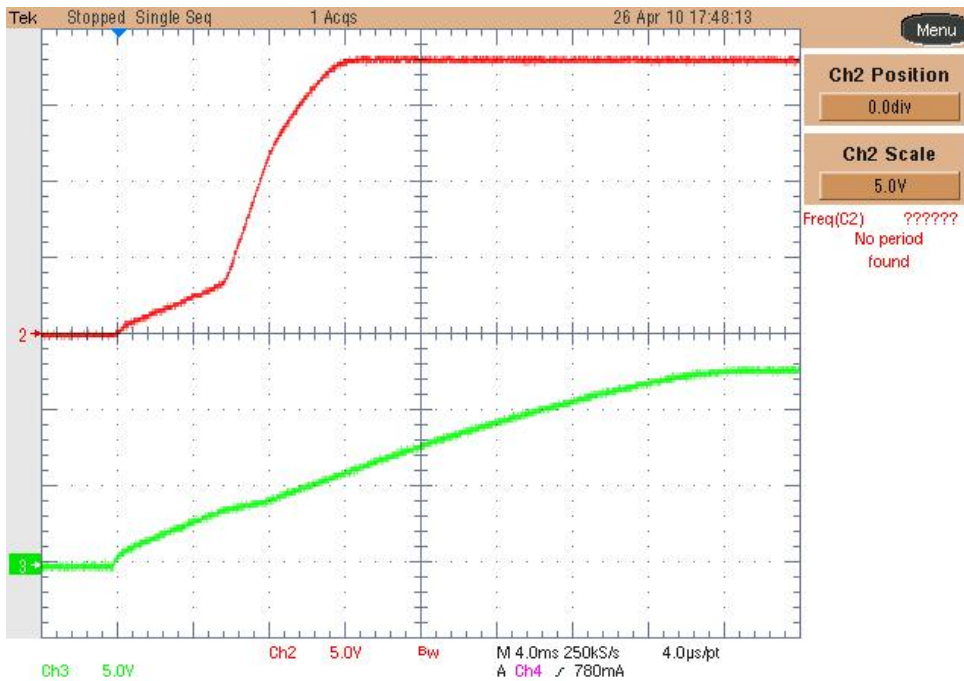
9V_{in}, No Load:



9Vin, Full Load:

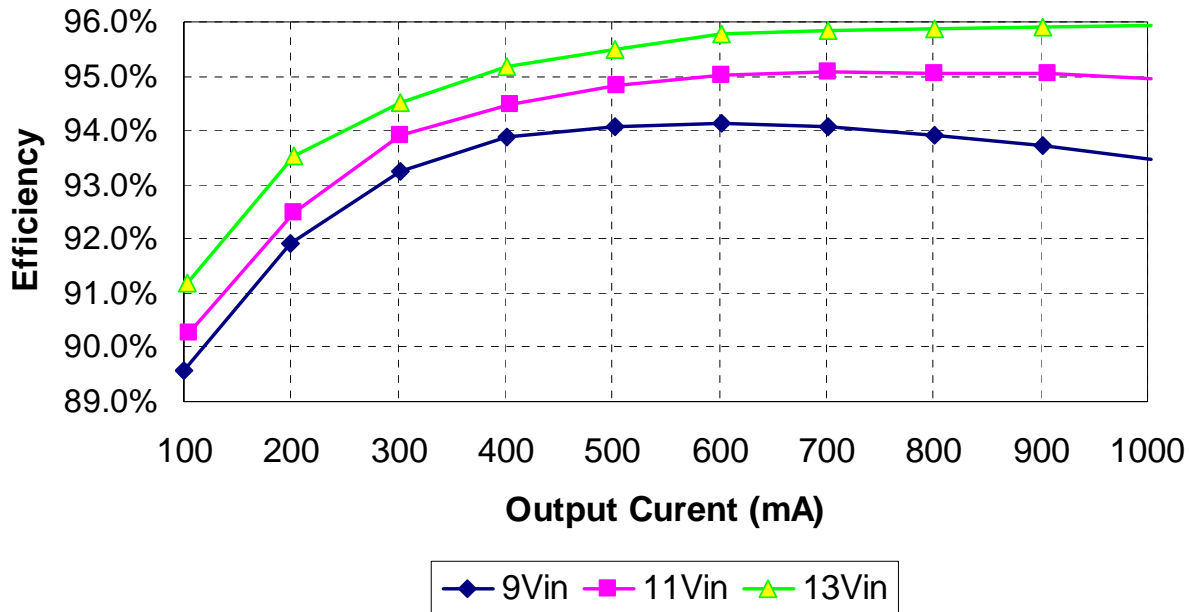


13Vin, Full Load:



2. Efficiency

The efficiency data is shown in the tables and graph below.



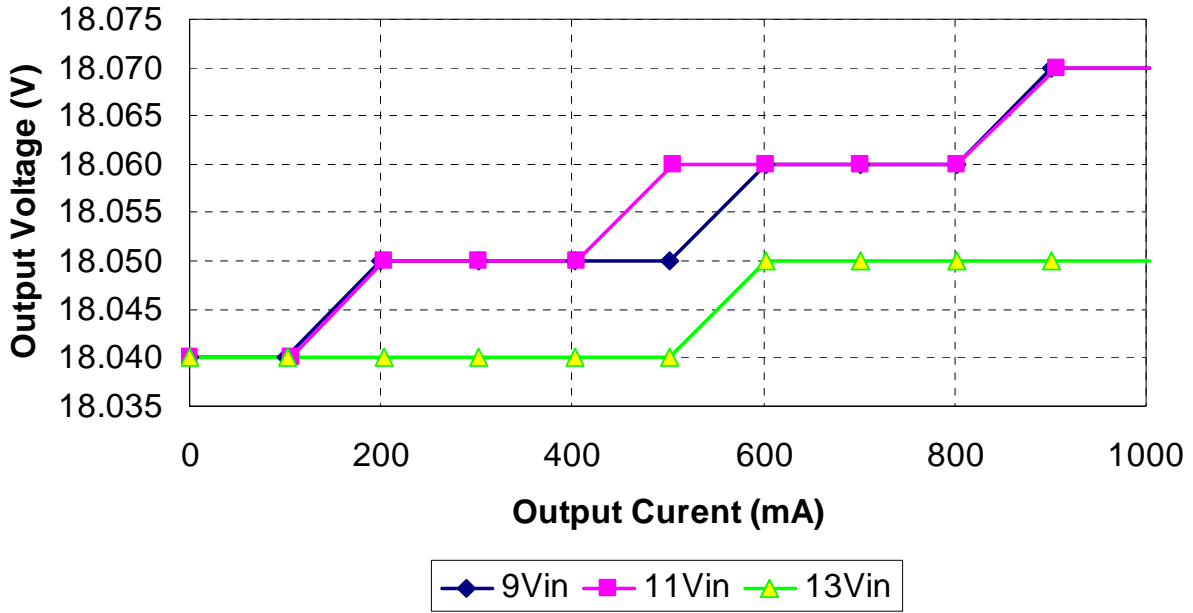
Iout (mA)	Vout (V)	Pout (W)	Iin (mA)	Vin (V)	Pin (W)	Ploss (W)	Eff
0.0	18.04	0.00	4.58	9.006	0.041	0.041	0.00%
100.0	18.04	1.80	223.5	9.012	2.014	0.210	89.56%
199.8	18.05	3.61	436	9.000	3.924	0.318	91.91%
302.4	18.05	5.46	649	9.019	5.853	0.395	93.25%
402.2	18.05	7.26	859	9.004	7.734	0.475	93.86%
502.0	18.05	9.06	1069	9.011	9.633	0.572	94.07%
602.0	18.06	10.87	1283	9.003	11.551	0.679	94.12%
701.7	18.06	12.67	1496	9.006	13.473	0.800	94.06%
801.7	18.06	14.48	1712	9.005	15.417	0.938	93.92%
901.4	18.07	16.29	1931	9.000	17.379	1.091	93.72%
1004.0	18.07	18.14	2155	9.007	19.410	1.268	93.47%

Iout (mA)	Vout (V)	Pout (W)	Iin (mA)	Vin (V)	Pin (W)	Ploss (W)	Eff
0.0	18.04	0.00	1.12	11.043	0.012	0.012	0.00%
105.4	18.04	1.90	190.9	11.033	2.106	0.205	90.28%
202.5	18.05	3.66	359	11.010	3.953	0.297	92.47%
302.4	18.05	5.46	528	11.010	5.813	0.355	93.89%
404.9	18.05	7.31	703	11.002	7.734	0.426	94.49%
504.7	18.06	9.11	873	11.011	9.613	0.498	94.82%
601.9	18.06	10.87	1040	11.000	11.440	0.570	95.02%
701.7	18.06	12.67	1210	11.014	13.327	0.654	95.09%
801.7	18.06	14.48	1383	11.015	15.234	0.755	95.04%
906.8	18.07	16.39	1567	11.001	17.239	0.853	95.05%
1004.0	18.07	18.14	1735	11.014	19.109	0.967	94.94%

Iout (mA)	Vout (V)	Pout (W)	Iin (mA)	Vin (V)	Pin (W)	Ploss (W)	Eff
0.0	18.04	0.00	0.85	13.00	0.011	0.011	0.00%
102.7	18.04	1.85	156.3	13.00	2.032	0.179	91.18%
202.5	18.04	3.65	299.8	13.03	3.906	0.253	93.52%
302.4	18.04	5.46	444	13.00	5.772	0.317	94.51%
402.2	18.04	7.26	586	13.01	7.624	0.368	95.17%
502.0	18.04	9.06	729	13.01	9.484	0.428	95.49%
601.9	18.05	10.86	872	13.01	11.345	0.480	95.77%
701.7	18.05	12.67	1015	13.02	13.215	0.550	95.84%
801.6	18.05	14.47	1161	13.00	15.093	0.624	95.86%
901.4	18.05	16.27	1305	13.00	16.965	0.695	95.90%
1004.0	18.05	18.12	1453	13.00	18.889	0.767	95.94%

3. Output Voltage Regulation

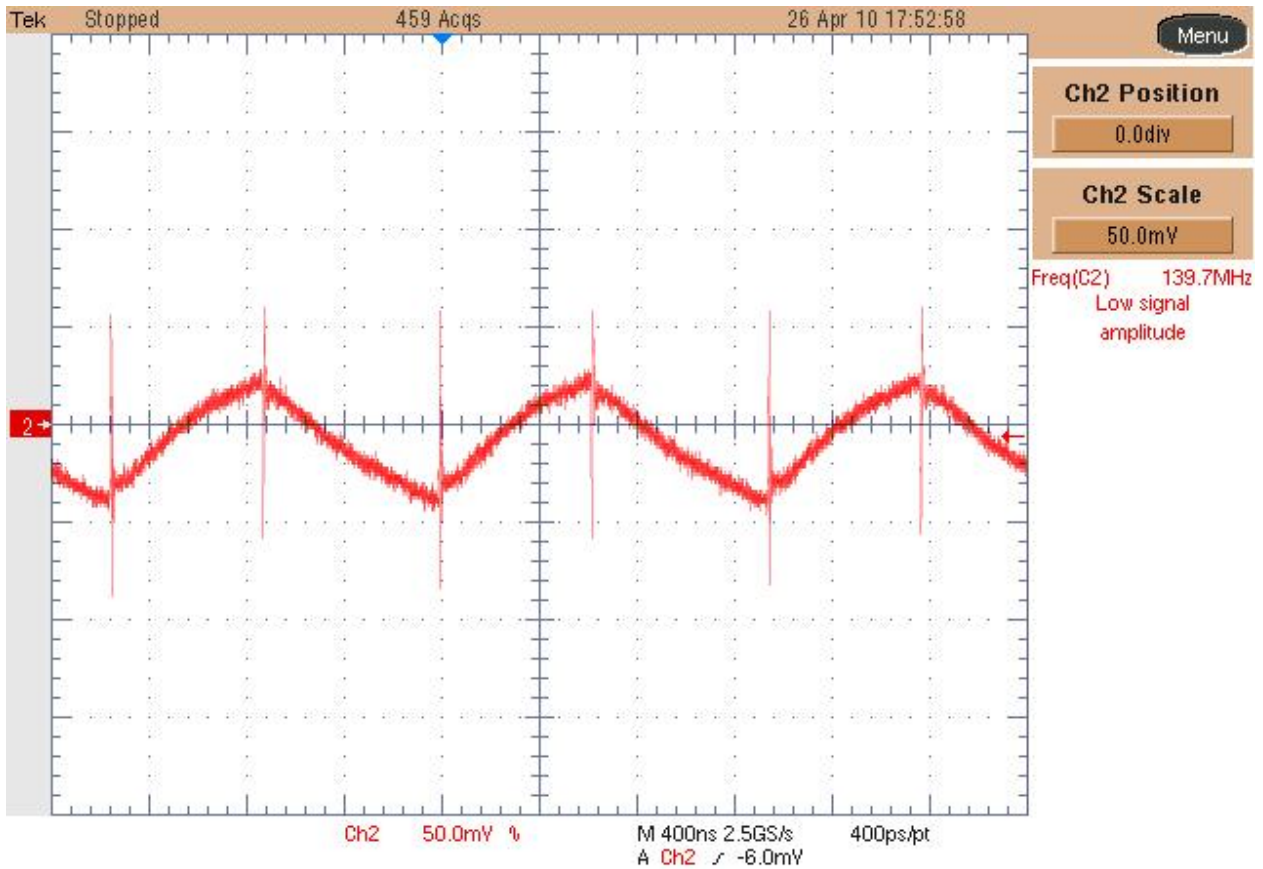
The output voltage regulation versus output load plot is shown below.



4. Output Ripple Voltage

The ripple voltage waveform measured at the terminal blocks is shown in the plot below. The input was set to 9Vin and the output was fully loaded.

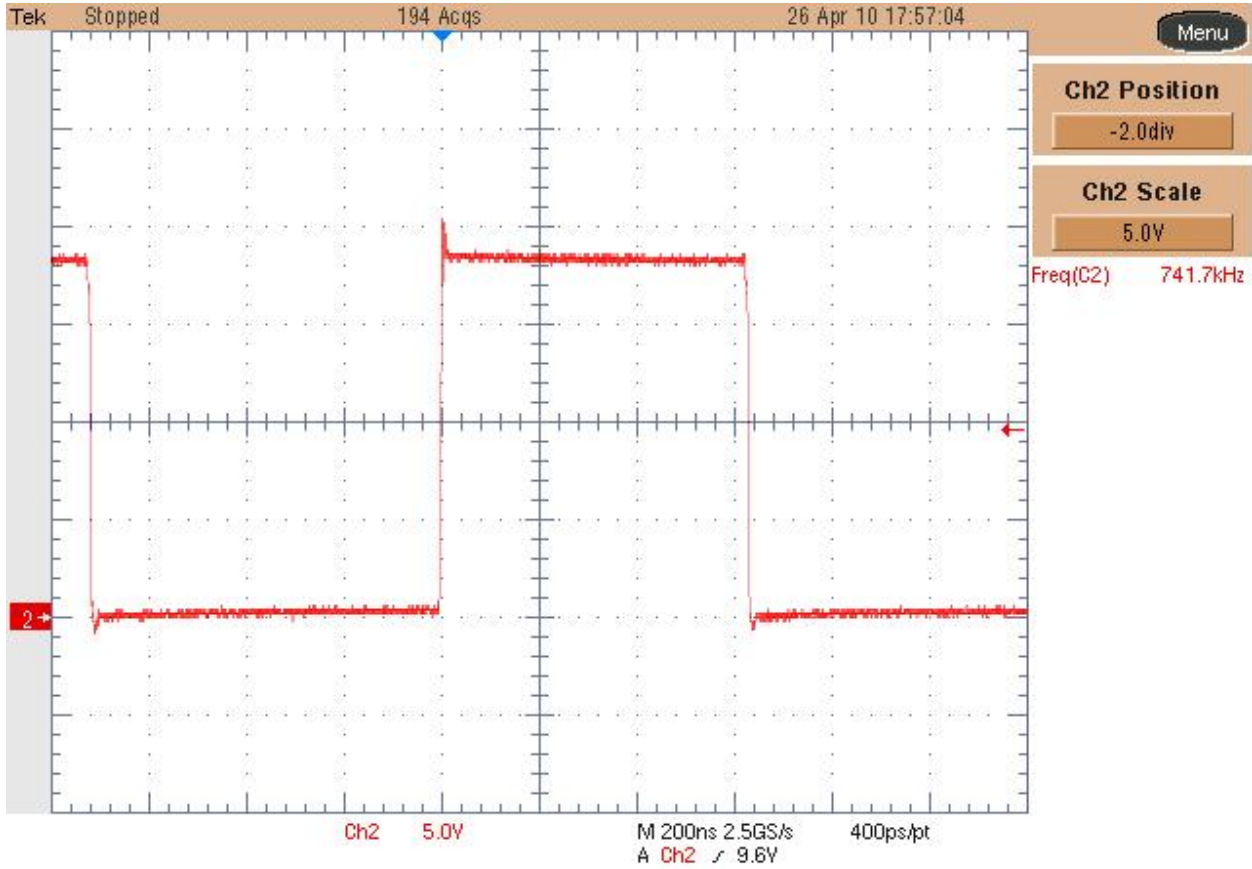
Channel 2: Output voltage (50 mV/div, 400nsec/div, AC coupled, full bandwidth).



5. Switch-Node

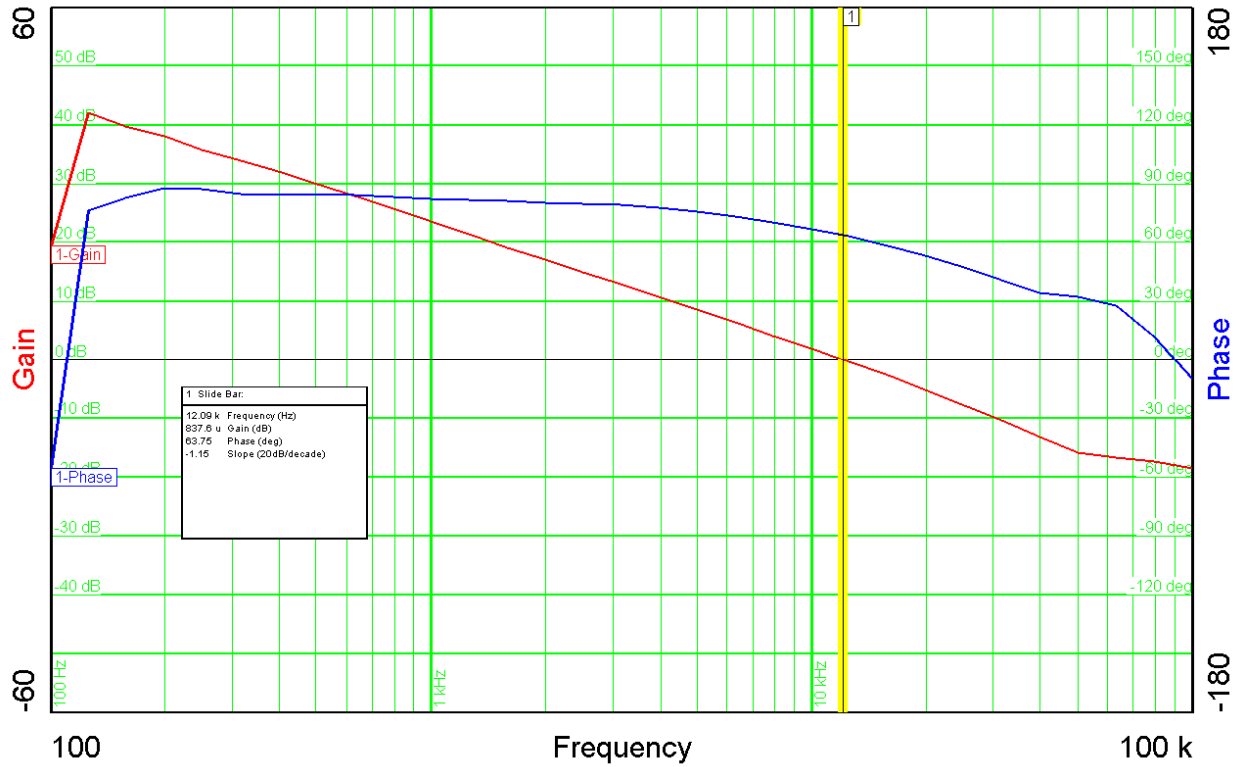
The image below shows the switch-node waveform (SW pins 1 and 2 of U1). The input was set to 9V while the output was fully loaded.

Channel 2: Switch Node, SW pin, (2V/div, 200nsec/div), no bandwidth reduction.



6. Loop Response

The image below shows the loop response of the converter measured with a 12V input at full load. Phase margin was 63.75 deg. and crossover frequency is 12.09 KHz, while the gain margin was 18.1dB.



7. Thermal Report

The picture below shows the infrared image of the converter taken after 30 minutes. The input voltage was set to 9V during a full load condition. The three hot spots (L1, D1, U1) are indicated.

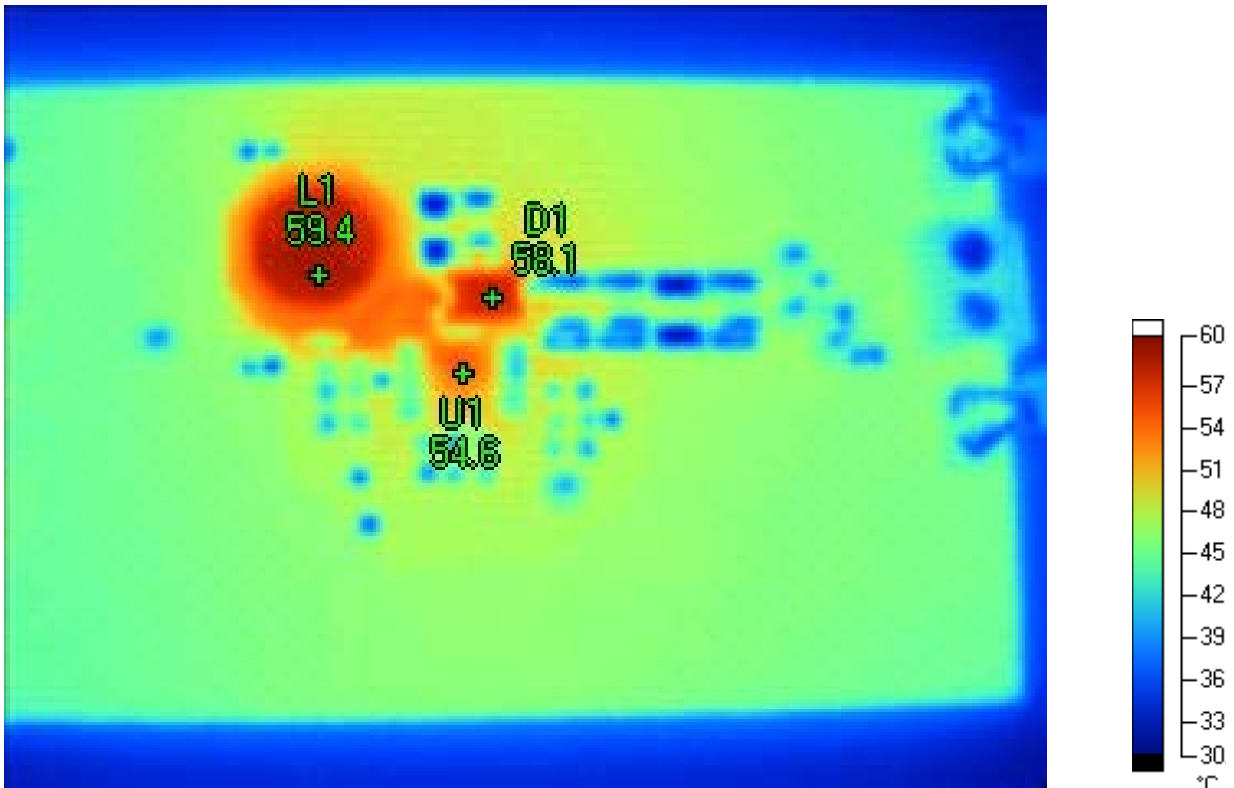


Image Info

Background	25.0 °C
Average Temperature	43.8 °C
Camera Model	Ti40FT
Image Range	31.3 °C to 59.7 °C
Lens Description	20mm/F0.8
Lens Serial #	40948-4409
Manufacturer	Fluke

Markers

Label	Temperature	Emissivity	Background
L1	59.4 °C	0.95	25.0 °C
D1	58.1 °C	0.95	25.0 °C
U1	54.6 °C	0.95	25.0 °C

IMPORTANT NOTICE

Texas Instruments Incorporated and its subsidiaries (TI) reserve the right to make corrections, modifications, enhancements, improvements, and other changes to its products and services at any time and to discontinue any product or service without notice. Customers should obtain the latest relevant information before placing orders and should verify that such information is current and complete. All products are sold subject to TI's terms and conditions of sale supplied at the time of order acknowledgment.

TI warrants performance of its hardware products to the specifications applicable at the time of sale in accordance with TI's standard warranty. Testing and other quality control techniques are used to the extent TI deems necessary to support this warranty. Except where mandated by government requirements, testing of all parameters of each product is not necessarily performed.

TI assumes no liability for applications assistance or customer product design. Customers are responsible for their products and applications using TI components. To minimize the risks associated with customer products and applications, customers should provide adequate design and operating safeguards.

TI does not warrant or represent that any license, either express or implied, is granted under any TI patent right, copyright, mask work right, or other TI intellectual property right relating to any combination, machine, or process in which TI products or services are used. Information published by TI regarding third-party products or services does not constitute a license from TI to use such products or services or a warranty or endorsement thereof. Use of such information may require a license from a third party under the patents or other intellectual property of the third party, or a license from TI under the patents or other intellectual property of TI.

Reproduction of TI information in TI data books or data sheets is permissible only if reproduction is without alteration and is accompanied by all associated warranties, conditions, limitations, and notices. Reproduction of this information with alteration is an unfair and deceptive business practice. TI is not responsible or liable for such altered documentation. Information of third parties may be subject to additional restrictions.

Resale of TI products or services with statements different from or beyond the parameters stated by TI for that product or service voids all express and any implied warranties for the associated TI product or service and is an unfair and deceptive business practice. TI is not responsible or liable for any such statements.

TI products are not authorized for use in safety-critical applications (such as life support) where a failure of the TI product would reasonably be expected to cause severe personal injury or death, unless officers of the parties have executed an agreement specifically governing such use. Buyers represent that they have all necessary expertise in the safety and regulatory ramifications of their applications, and acknowledge and agree that they are solely responsible for all legal, regulatory and safety-related requirements concerning their products and any use of TI products in such safety-critical applications, notwithstanding any applications-related information or support that may be provided by TI. Further, Buyers must fully indemnify TI and its representatives against any damages arising out of the use of TI products in such safety-critical applications.

TI products are neither designed nor intended for use in military/aerospace applications or environments unless the TI products are specifically designated by TI as military-grade or "enhanced plastic." Only products designated by TI as military-grade meet military specifications. Buyers acknowledge and agree that any such use of TI products which TI has not designated as military-grade is solely at the Buyer's risk, and that they are solely responsible for compliance with all legal and regulatory requirements in connection with such use.

TI products are neither designed nor intended for use in automotive applications or environments unless the specific TI products are designated by TI as compliant with ISO/TS 16949 requirements. Buyers acknowledge and agree that, if they use any non-designated products in automotive applications, TI will not be responsible for any failure to meet such requirements.

Following are URLs where you can obtain information on other Texas Instruments products and application solutions:

Products

Audio	www.ti.com/audio
Amplifiers	amplifier.ti.com
Data Converters	dataconverter.ti.com
DLP® Products	www.dlp.com
DSP	dsp.ti.com
Clocks and Timers	www.ti.com/clocks
Interface	interface.ti.com
Logic	logic.ti.com
Power Mgmt	power.ti.com
Microcontrollers	microcontroller.ti.com
RFID	www.ti-rfid.com
OMAP Mobile Processors	www.ti.com/omap
Wireless Connectivity	www.ti.com/wirelessconnectivity

Applications

Communications and Telecom	www.ti.com/communications
Computers and Peripherals	www.ti.com/computers
Consumer Electronics	www.ti.com/consumer-apps
Energy and Lighting	www.ti.com/energy
Industrial	www.ti.com/industrial
Medical	www.ti.com/medical
Security	www.ti.com/security
Space, Avionics and Defense	www.ti.com/space-avionics-defense
Transportation and Automotive	www.ti.com/automotive
Video and Imaging	www.ti.com/video

TI E2E Community Home Page

e2e.ti.com

Mailing Address: Texas Instruments, Post Office Box 655303, Dallas, Texas 75265
Copyright © 2011, Texas Instruments Incorporated