

Design Guide: TIDEP-01027

高端角雷达参考设计



说明

该参考设计使用了 AWR2944 评估模块 (EVM)，为角雷达应用满足 NCAP R79 安全要求奠定了基础。该设计使用户能够估算和跟踪器件视场内最远 200m 的物体位置 (在方位平面中) 和速度。该应用主要面向提供多种功能 (如盲点检测、前侧来车辅助和变道辅助) 的角雷达和前置远距离雷达系统。该设计还演示了 TI 压缩引擎和硬件加速器 (HWA) 功能。

资源

| | |
|------------------------------------|-------|
| TIDEP-01027 | 设计文件夹 |
| AWR2944 | 产品文件夹 |
| MMWAVE-MCUPLUS-SDK | 产品文件夹 |
| TCAN1043-Q1 | 产品文件夹 |
| TMP112 | 产品文件夹 |

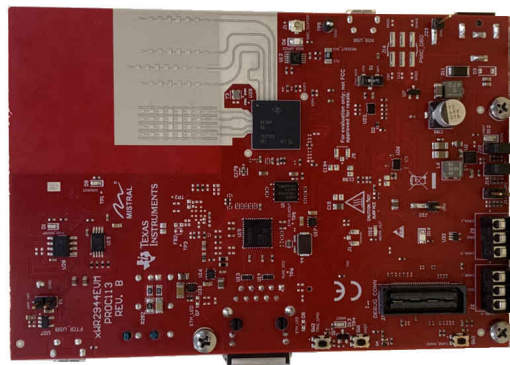
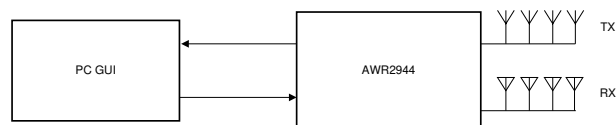


特性

- 使汽车制造商能够使用单芯片雷达传感器满足 NCAP R79 安全要求
- 利用第四个发射器实现的卓越射频性能，提供非凡的角雷达性能，获得比传统 3 发射器器件高 33% 的角分辨率
- 检测并跟踪最远 200 米处速度为 ± 140 千米/小时 (kmph) 的物体 (如汽车和卡车)
- 天线方位角视场为 $\pm 80^\circ$ ，且方位角分辨率约为 9.5°
- 展示以下 AWR2944 功能：
 - TX 相移
 - 数据压缩
 - 支持由毫米波 SDK 提供的多普勒频分多址 (DDMA) 处理链的 HWA。
- 使客户建立对毫米波器件功能的信心
- 改进客户开发周期 (例如硬件重新设计和软件开发工作)

应用

- 中等距离和短距离雷达
- 远距离雷达



1 System Description

Autonomous control of a vehicle provides quality-of-life and safety benefits in addition to making the relatively mundane act of driving safer and less difficult. The quality-of-life features include the ability of a vehicle to park itself or to determine whether a lane change is possible and provide features like automatic cruise control—where a vehicle maintains a constant distance with respect to the car ahead of it, essentially tracking the velocity of the car in front of it. Autonomous breaking and collision avoidance are safety features that prevent accidents caused by driver inattention. These features work by observing the area around (front, rear, and adjacent) a car and alerting the autonomous driving subsystems if obstacles are observed that are likely to hit the car. Implementing these technologies require a variety of sensors to detect obstacles in the environment and track their velocities and positions over time.

1.1 Why use Radar?

Frequency-modulated continuous-wave (FMCW) radars allow the accurate measurement of distances and relative velocities of obstacles and other vehicles; therefore, radars are useful for autonomous vehicular applications (such as lane change assist and cross traffic alert) and car safety applications (autonomous breaking and collision avoidance). An important advantage of radars over camera and light-detection and ranging (LIDAR)-based systems is that radars are relatively immune to environmental conditions such as the effects of rain, dust, and smoke. Because FMCW radars transmit a specific signal (called a chirp) and process the reflections, they work in complete darkness and also bright daylight (radars are not affected by glare). When compared with ultrasound, radars typically have a much longer range and much faster signal transit times.

1.2 TI Corner Radar Design

The TIDEP-01027 is an introductory application where the AWR2944 device is configured for corner radar applications to track objects within a 200-m range.

1.3 Key System Specification

This reference design uses Doppler division multiple access (DDMA) processing where most of processing is done on the HWA and some intermediate tasks are offloaded to the DSP.

表 1-1. Key System Specification

| PARAMETER | SPECIFICATIONS | DETAILS |
|----------------------------------|----------------|--|
| Maximum range (m) | 253 | This is the maximum range supported by the chirp configuration shown in 表 2-1 . The maximum detectable range for a given object depends on the Radar cross section (RCS) of the object |
| Range resolution (m) | 1.3 | The theoretical achievable resolution by AWR2944 is 3.75 cm based on 4 GHz bandwidth |
| Maximum velocity (kmph) | ±143 | This is the native maximum velocity obtained after velocity disambiguation in DDMA. This specification can be improved by either using the range-rate in the tracker or higher-level algorithms |
| Velocity resolution (kmph) | 0.37 | This parameter represents the capability of the radar sensor to distinguish between two or more objects at the same range but moving with different velocities |
| Azimuth angular resolution (Deg) | 9.5 | This is the native azimuth angular resolution based on the virtual array aperture |

2 System Overview

2.1 Block Diagram

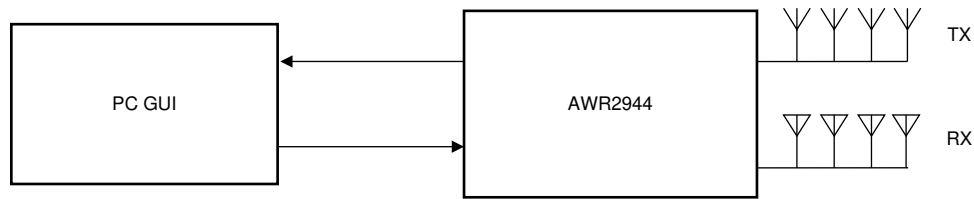


图 2-1. High-End Corner Radar System Block Diagram

2.2 Design Considerations

The latest Euro NCAP regulation, No. 79 specifies that a sensor should be able to detect vehicles approaching from the rear in an adjacent lane up to a distance S_{rear} . The distance S_{rear} depends on the ego vehicle speed and the speed of the approaching vehicle. To meet these requirements, a radar sensor must be able to detect a vehicle that is moving at 130 kmph at a distance of 200 m away from the sensor.

To meet these requirements, the additional fourth transmitter in the AWR2944 is used to increase the azimuth angular resolution to approximately 9.5 degrees. In addition, the TX phase shifters and the capability to change the phase shift per chirp is leveraged to give a unique cyclic phase shift to each transmit channel. This unique cyclic phase shift allows separation of the TX channel in the Doppler domain, a MIMO scheme known as Doppler division multiple access (DDMA). DDMA permits an increase in the SNR by $10\log_{10}(Nt) = 6$ dB over standard *Time Division* multiplexing schemes where Nt is the number of transmit channels. This increase in SNR results in larger detection ranges.

2.3 Highlighted Products

2.3.1 AWR2944 Single-Chip Radar Solution

TI's AWR2243 is a 76-GHz to 81-GHz automotive second-generation high-performance MMIC. The device is a cost-competitive single-chip MMIC to win high performance mid-end and high-end corner radars meeting 170 m plus NCAP safety requirements.

The AWR2944 is an integrated single-chip, frequency modulated continuous wave (FMCW) sensor capable of operation in the 76-GHz to 81-GHz frequency band. The device is built with TI's low-power, 45-nm RFCMOS processor and enables unprecedented levels of analog and digital integration in an extremely small form factor. The device has four receivers and four transmitters with a closed-loop phase-locked loop (PLL) for precise and linear chirp synthesis. The sensor includes a built-in radio processor (BIST) for RF calibration and safety monitoring. Based on complex baseband architecture, the sensor device supports an IF bandwidth of 15 MHz with reconfigurable output sampling rates. The presence of Arm® Cortex® R5F, TI's C66x Digital Signal Processor (DSP) (fixed and floating point) and Hardware Accelerator (HWA 2.0) along with 4MB* of on-chip RAM enables high-level algorithm development.

2.3.2 AWR2944 Evaluation Module

The AWR2944 EVM has the following features:

- AWR2944 radar device
- Onboard antenna (four transmitters and four receivers)
- XDS110 based JTAG emulation with serial port for onboard QSPI flash programming
- 60-pin, high-density (HD) connector for external JTAG and emulator interface with TRACE and CSI2 support
- RJ45 connector to stream the captured data over the network to the host PC
- MATEnet Ethernet interface to stream the captured data over the network to an automotive host
- Dual onboard CAN-FD transceiver
- 12-V power jack to power the board

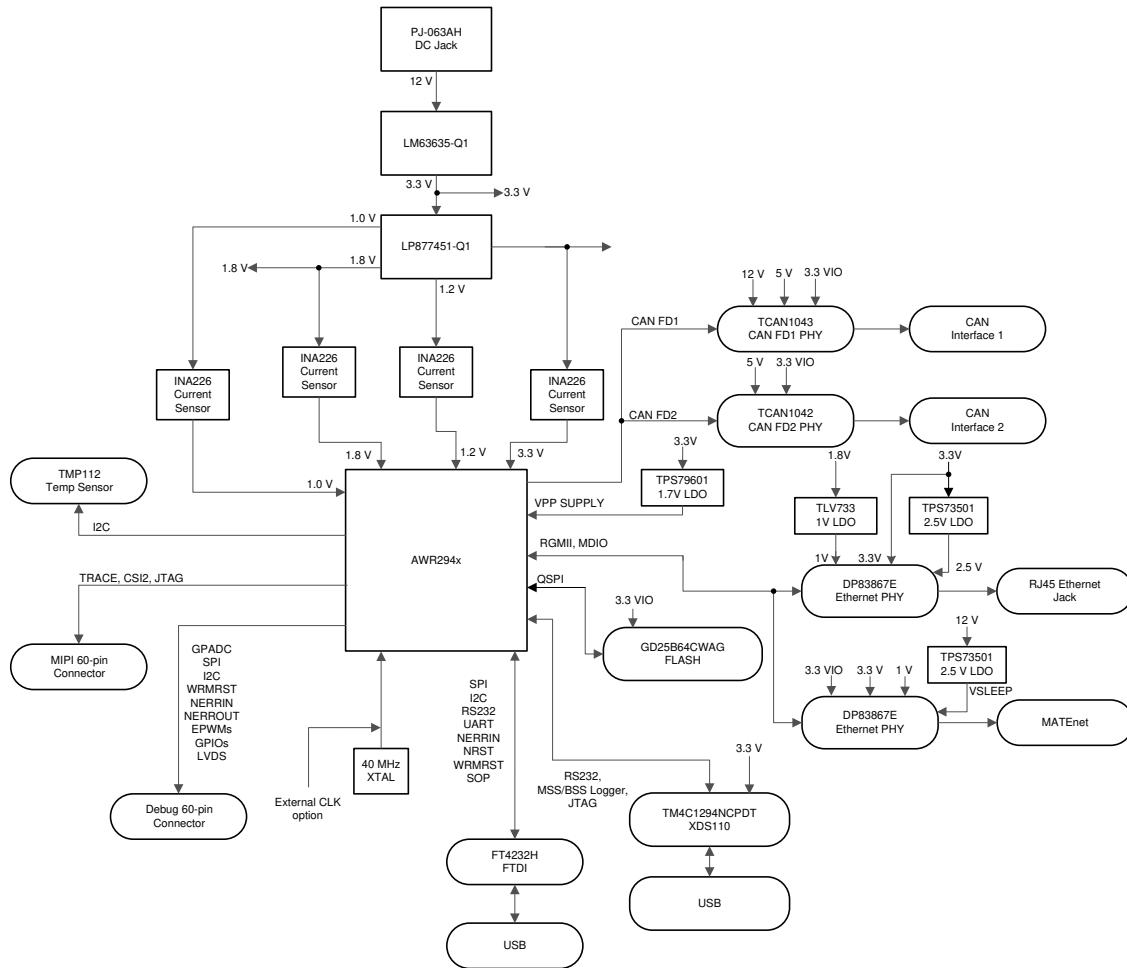


图 2-2. AWR2944 EVM Block Diagram

For more details on the hardware, see [AWR2944 Evaluation Module \(AWR2944BOOST\) Single-Chip mmWave Sensing Solution](#) user's guide. The schematics and design database are found in the following documents: [AWR2944 Evaluation Board Design Database](#) and [AWR2944BOOST Schematic, Assembly, and BOM](#).

2.4 System Design Theory

2.4.1 Antenna Configuration

The TIDEP-01027 uses four receivers and the four transmitters in single-chirp configuration, see [图 2-3](#).

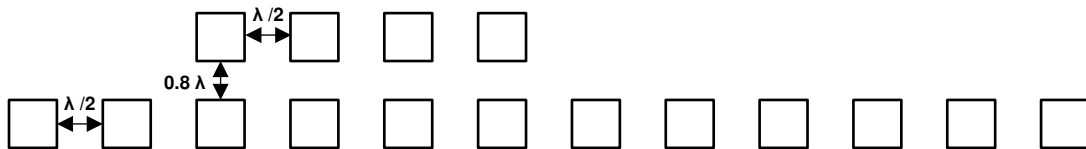


图 2-3. Antenna Configuration

2.4.2 Chirp Configuration and System Performance

To achieve the specific corner radar, use a case with a visibility range of 200 m and memory availability of the AWR2944. 表 2-1 lists the chirp configuration used.

表 2-1. Chirp Configuration

| PARAMETER | CONFIGURATION |
|----------------------------------|---------------|
| Idle time (μ s) | 5 |
| ADC start time (μ s) | 5 |
| Ramp end time (μ s) | 18.83 |
| Number of ADC samples | 384 |
| Frequency slope (MHz/ μ s) | 8.883 |
| MIMO (1 \rightarrow yes) | 1 |
| Number of chirps per profile | 768 |
| Effective chirp time (μ s) | 23.83 |
| Bandwidth (MHz) | 114 |
| Frame length (ms) | 250 |

表 2-2. System Performance Parameter

| PARAMETER | SPECIFICATIONS |
|--------------------------------|----------------|
| Range resolution (m) | 1.3 |
| Maximum distance (m) | 200 |
| Native maximum velocity (kmph) | 140 |

Note

The configuration and parameters in 表 2-1 and 表 2-2 are based on the current application release but not limited by the device.

A single legacy frame is used for this application where all the chirps are connected with one profile configuration.

2.4.3 Data Path

The block diagram in 图 2-4 shows the processing data path to the BSD, LCA, and CTA applications.

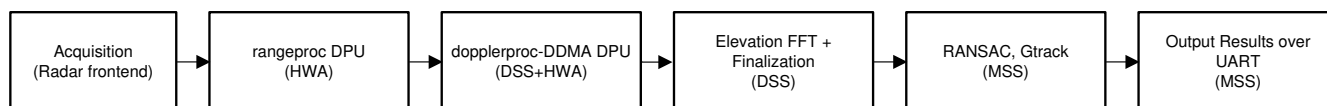


图 2-4. DDMA Processing Datapath Flow

2.4.4 Chirp Timing

图 2-5 shows the timing of the chirps and subsequent processing in the system.

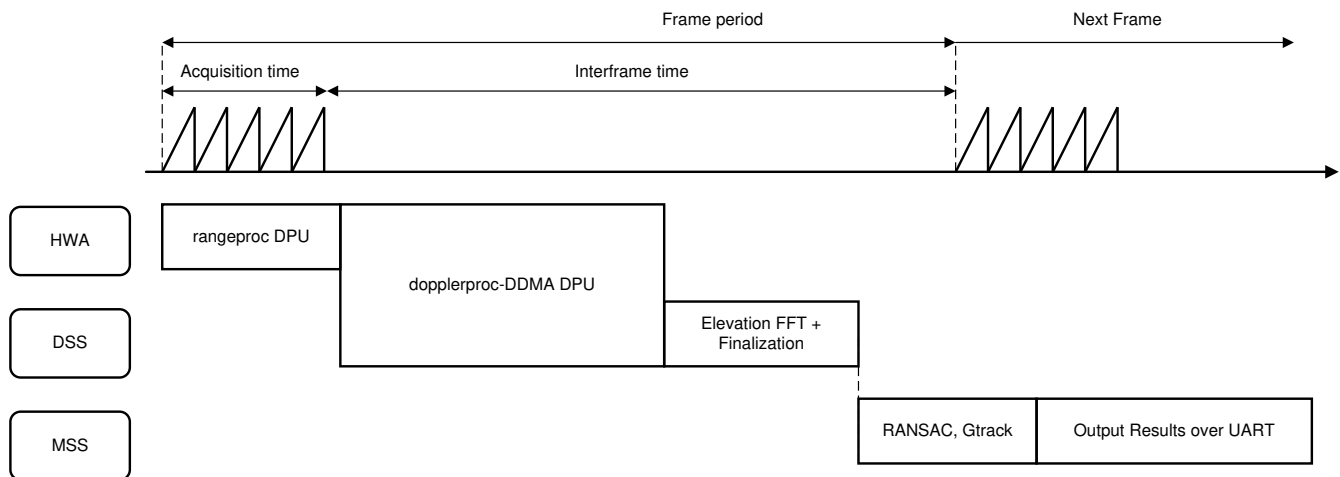


图 2-5. Chirp Timing Sequence

Chirp acquisition happens in the radar front end. The front end is configured via mmwavelink in accordance with the chirp configuration.

The core of the data path processing - from chirp acquisition to pointcloud output is divided into the following high-level blocks: rangeproc data processing unit (DPU), dopplerproc-DDMA DPU, elevation FFT, and finalization.

As the acquisition occurs, rangeproc DPU calculates the first dimensional FFT chirp-by-chirp in parallel to the acquisition, compresses the output, and stores it in memory as the compressed radarcube.

Next, the dopplerproc-DDMA DPU decompresses the radarcube one slice at a time and calculates for each slice both velocity and azimuth angle information by taking appropriate FFTs. The dopplerproc-DDMA DPU also performs DDMA demodulation to get the correct velocity out of six possible hypotheses as per the DDMA scheme. Finally, the dopplerproc-DDMA DPU also computes range CFAR and local maximum along range. The dopplerproc-DDMA DPU combines these to produce the object list. The dopplerproc-DDMA DPU utilizes both the hardware accelerator and DSP parallelly to achieve this.

After this step, the elevation FFT is performed on the DSP, followed by the finalization step that computes the Cartesian coordinates and velocity of the detected objects.

After this, RANSAC and GTrack algorithms run on the MSS to produce a target list for the scene. A brief overview of these algorithms is given in later sections. As 图 2-5 shows, this part of the processing overruns into the next frame. This overrun is by design as it enables the parallel utilization of MSS for GTrack, RANSAC, and data transmission over UART while the rest of the processing happens on HWA+DSP for the next frame.

For more details on the application flow and processing, see the [mmWave software development kit \(SDK\)](#).

2.4.5 eDMA Configuration

Large-scale data movement between memories is accomplished using the EDMA. Using the EDMA is more efficient than using the processor to move data because while the data movement is being completed, the DSP and HWA can continue to process data. The EDMAs work on a ping-pong buffer, meaning that as the ping buffer is being filled, the pong buffer can be used by the HWA or DSP for processing.

The major data transfers necessary include:

- Moving the compressed 1D FFT output from the rangeproc DPU into the L3 memory. This forms the compressed radarcube.
- Fetching one slice of the compressed radarcube and copying it to HWA memory for decompression.
- Copying decompressed slice of radarcube into a scratch buffer in L3 for further processing.
- Copying decompressed radarcube slice one range-gate at a time into HWA for Doppler processing.

- Moving 2D FFT output from HWA memory to Doppler FFT scratch submatrix buffer in L2.
- Moving outputs of CFAR, Local Max, and azimuth FFT from HWA memory into buffers in L2.
- Triggering the HWA processing upon relevant input EDMA completion (writing a one hot signature into the appropriate HWA register via chained EDMA).

2.4.6 Memory Allocation

The AWR2944 has the following memories:

- DSS L3 RAM of 2.5MB (see [Note](#))
- DSS L2 RAM of 384KB
- DSS L1D RAM of 32KB
- DSS L1P RAM of 32KB
- MSS L2 RAM of 960KB

Note

L3 RAM for AWR2944 ES1.0: 2.25MB, ES2.0: 3MB.

Of the 32KB for L1P RAM and L1D RAM available, half (16KB) of the L1P RAM and half (16KB) of the L1D RAM are used as cache. The remaining half is reserved for code and data, and is unused.

DSS L2 RAM is used for:

- Text section (code)
- Data scratch buffers
- DDMA Doppler FFT Demodulated submatrix
- RTOS task stacks

DSS L3 RAM is used for:

- Storing the compressed radarcube
- Storing slices of decompressed radarcube for processing in scratch buffer
- Object list

MSS L2 RAM is used for:

- Text section (code)
- Copying pointcloud in L3 produced by DSS. This allows DSS to work on next frame in parallel.
- Converting between Cartesian and polar coordinate systems to interface with RANSAC and GTrack algorithms
- Buffers for GTrack

Processing radar signals requires a large number of scratch buffers for each step of the processing stages. The available memory is used efficiently by overlaying the scratch buffers. A scratch buffer used in a previous stage can be re-used in the current stage. More details for this memory layout are found in the mmWave SDK documentation.

2.4.7 DDMA

Doppler division multiple access (DDMA) is a MIMO scheme that allows simultaneous transmission of all TX channels. This allows an increase in the transmit power and hence higher SNR. In DDMA, the orthogonality between different TX channels is obtained by coding each TX with a unique cyclic phase sequence using the phase shifters. [图 2-6](#) illustrates the working of DDMA modulation. In time domain, a unique phase shift is applied to each TX channel. This phase value is constant per-chirp and increases as the chirp index increases. If there are N_t transmitters, each transmitter is modulated with phase $\omega_k = \frac{2\pi(k-1)}{N_t}$, is the chirp index. The example in [图 2-6](#) has $N_t = 3$. The orthogonality happens in the Doppler frequency domain as shown in [图 2-7](#). Therefore, after Doppler FFT, the signals from different TX channels are naturally separated. However, due to Doppler frequency multiplexing, the allowed maximum target velocity is reduced by a factor of N_t , similar to time division Multiplexing (TDM) MIMO. It is possible to recover the maximum velocity using hypothesis testing with zero padding or phase dithering.

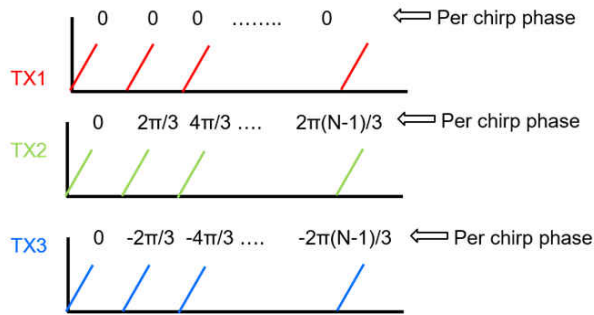


图 2-6. DDMA Modulation nonEmpty

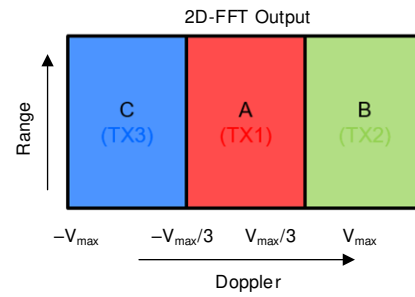


图 2-7. Doppler Spectrum in DDMA

2.4.8 Empty Subband Based DDMA

TX channels can be coded to introduce empty-bands in the Doppler spectrum. This allows more robust velocity disambiguation and Doppler-bin to TX-channel mapping in DDMA. To introduce two empty Doppler subbands, the phase added to each TX channel is modified as $\omega_k = \frac{2\pi(k-1)}{N_t+2}$. 图 2-8 and 图 2-9 show the range-Doppler plane with $N_t = 4$ and two empty-bands. The locations of these empty Doppler subbands are used to find the hypothesis that will determine the correct TX channel mapping and allow velocity disambiguation as shown in 图 2-10.

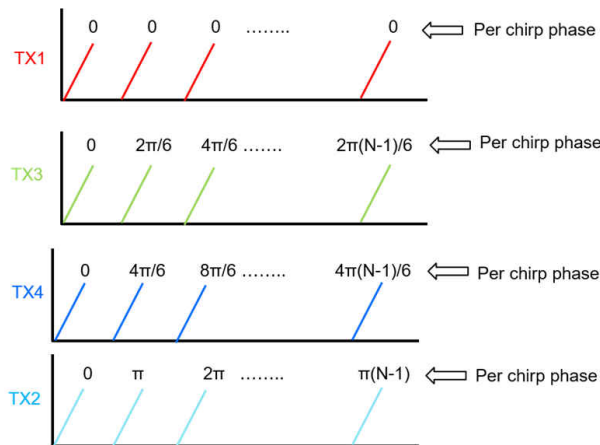


图 2-8. DDMA Modulation

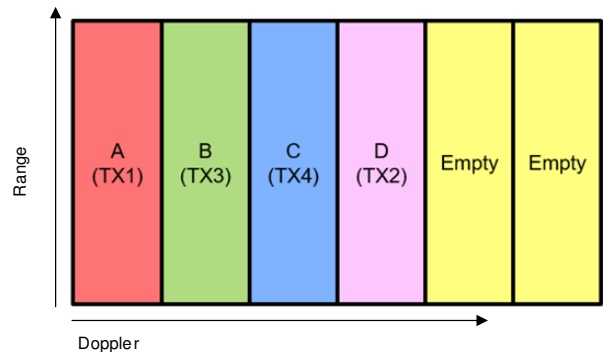


图 2-9. Doppler Spectrum in DDMA With 4 Transmitters and 2 Empty Subbands

| | A | B | C | D | E | F |
|--------------|-----|-----|-----|-----|-----|-----|
| Hypothesis 1 | TX1 | TX3 | TX4 | TX2 | 0 | 0 |
| Hypothesis 2 | 0 | TX1 | TX3 | TX4 | TX2 | 0 |
| Hypothesis 3 | 0 | 0 | TX1 | TX3 | TX4 | TX2 |
| Hypothesis 4 | TX2 | 0 | 0 | TX1 | TX3 | TX4 |
| Hypothesis 5 | TX4 | TX2 | 0 | 0 | TX1 | TX3 |
| Hypothesis 6 | TX3 | TX4 | TX2 | 0 | 0 | TX1 |

图 2-10. Different Hypothesis Corresponding to Different Empty Band Locations

2.4.9 RANSAC

Radar measures the relative radial velocity between the target and radar sensor. In several scenarios, an understanding of whether the relative velocity is due to the movement of the target or the movement of the ego-vehicle itself is required. In this reference design, we fit the velocity profile (radial velocity as a function of the azimuth angle) of the detected points to a motion model using a statistical algorithm called RANSAC (Random sampling and Consensus) to distinguish between the reflections from moving and stationary targets in the ego-vehicles environment. More details about the algorithm are found in [Instantaneous ego-motion estimation using](#)

Doppler radar ⁽⁵⁾. The radar detected points that have been classified as coming from moving objects are used as an input to the tracking algorithm.

2.4.10 Group Tracker

Real world radar targets (cars, pedestrians, and so forth) are presented to a tracking processing layer as a set of multiple reflection points. Those detection points form a group of correlated measurements with range, angle, SNR, and radial velocity. The group tracker, tracks a cluster of points (also known as group) in 2D over time based on a constant acceleration motion model. 图 2-11 shows the main functional blocks of the group tracker algorithm. The subblocks shown in white are classical extended Kalman filter (EKF) operations. The subblocks shown in orange are additions to support multipoint grouping. More details about the group tracking algorithm are found in [Group Tracker Parameter Tuning Guide for the 3D People Counting Demo](#).

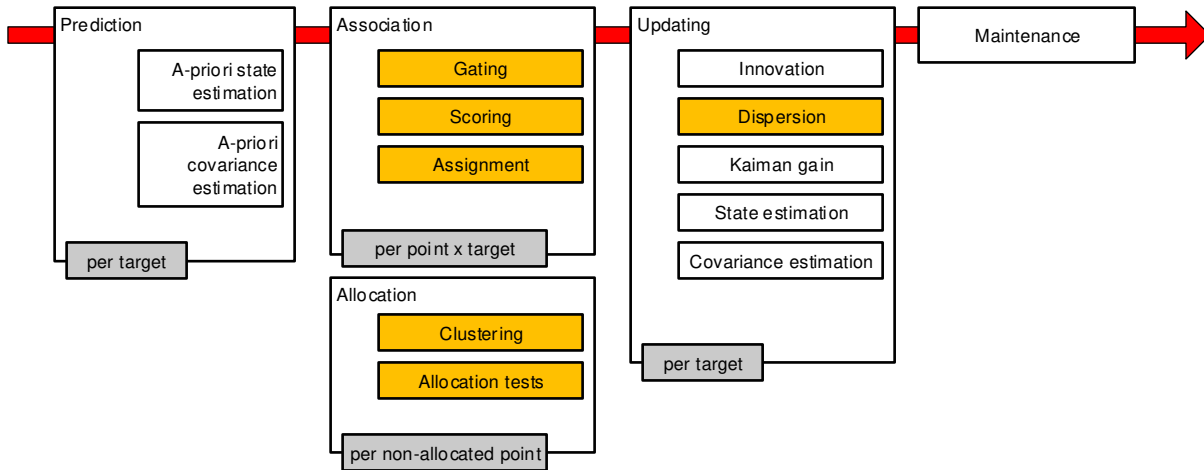


图 2-11. Group Tracker Block Diagram

These parameter sets can be tweaked based on test results or as per scene requirement.

表 2-3. GTrack Parameter Sets

| SCENARIO | PARAMETER SETS | CLI COMMANDS | DESCRIPTION |
|----------|---|------------------|--|
| 1 | Scenery Parameters | appSceneryParams | These define the dimensions of the physical space in which the tracker will operate. These also specify the radar sensor orientation and position. Any measurement points outside these boundary boxes are not used by the tracker. |
| 2 | Gating Parameters | appGatingParams | These determine the maximum volume and velocity of a tracked object and are used to associate measurement points with tracks that already exist. Points detected beyond the limits set by these parameters are not included in the set of points that make up the tracked object. |
| 3 | Allocation Parameters | appAllocParams | These are used to detect new tracks or people in the scene. When detected points are not associated with existing tracks, allocation parameters are used to cluster these remaining points and determine if that cluster qualifies as a person or target. |
| 4 | State Parameters | appStateParams | The state transition parameters determine the state of a tracking instance. Any tracking instance can be in one of three states: FREE, DETECT, or ACTIVE. |
| 5 | Max Acceleration Parameters Max number of points Max number of tracks | gtrack | Max acceleration parameters determine the maximum acceleration in the lateral, longitudinal, and vertical directions. |

3 Hardware, Software, Testing Requirements, and Test Results

3.1 Required Hardware and Software

The AWR2944 BoosterPack™ plug-in module is an easy-to-use evaluation board for the AWR2944 mmWave sensing devices.

The BSD, LCA, and CTA applications run on the AWR2944BOOST EVM and connects to a visualization tool running on a PC connected to the EVM over USB. Details for using this board are found in the [AWR2944 Evaluation Module \(AWR2944BOOST\) Single-Chip mmWave Sensing Solution](#) user's guide. The BSD, LCA, and CTA design is an application built using the mmwaveSDK. As such, it is necessary to install the mmwave SDK from [mmWave software development kit \(SDK\)](#). The source code for the BSD, LCA, and CTA design is found in the mmWave Automotive Toolbox from the TI Resource Explorer. The MMWAVE-MCUPLUS-SDK version used to build this code is provided in the demo software release notes.

3.1.1 Hardware

The AWR2944 EVM core design includes:

- AWR2944 device: a single-chip, 77-GHz radar device with an integrated DSP and HWA
- Power management network using a low-dropout linear regulator (LDO) and power management integrated circuit (PMIC) DC/DC supply (LP887451-Q1, and LP63635-Q1)
- The EVM also hosts a device to assist with onboard emulation and UART emulation over a USB link with the PC and Ethernet Port.

3.1.2 Software and GUI

Associated software is hosted on the TI Resource Explorer [Automotive Toolbox](#).

The demo GUI is configured as shown in [图 3-1](#).

The first window of the GUI tool allows the user to configure the demo. In the first tab, (UART port options), UART ports are configured based on the device manager settings. Loading the configuration file is optional in the second tab, if the user needs to change some inbuilt configuration of the default application. The third tab configures the ranges on the GUI, it only configures the GUI and not the radar. The final tab has a list of record and replay options that allow the recording of and then replaying of UART recordings.

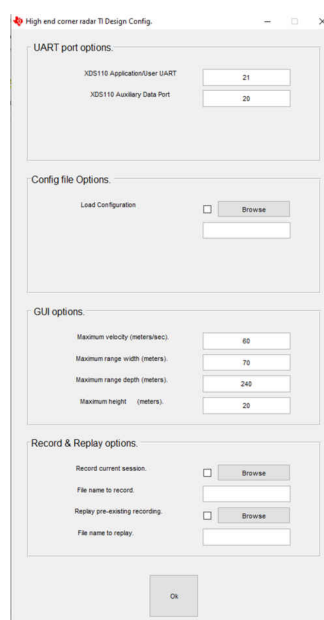


图 3-1. GUI Front Page Screen

The default GUI starts as soon as the OK button is clicked.

See [图 3-2](#) for a screenshot of the GUI with the different components labeled.

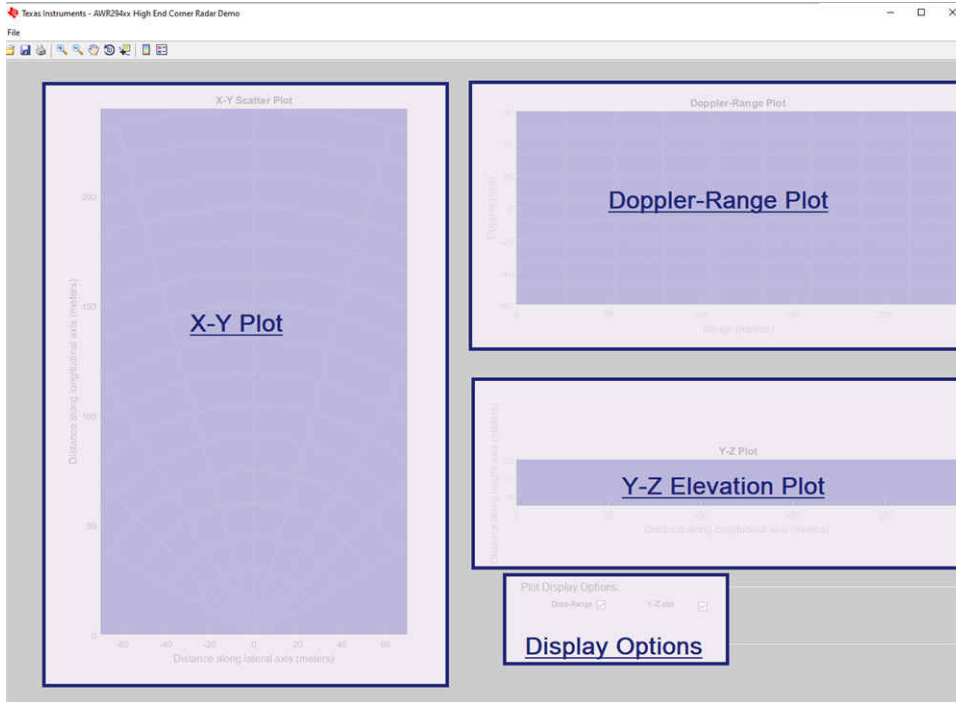


图 3-2. GUI Plot Screen

The MATLAB® GUI consists of five components:

- X-Y scatter plot: displays the positions of the point clouds, the tracks
- Y-Z plot: displays the elevation in formation of the detected object
- Doppler range plot: displays the Doppler-range coordinates of the point cloud and tracks
- Display options to hide some of the plot if Visualizer lags to plot the point clouds.

3.2 Test Setup

The performance of the AWR2944 corner radar functionality was tested using the demonstration available in the TI Resource Explorer in the [Automotive Toolbox](#): lab01027. The AWR2944BOOST EVM was used for the tests. [图 3-3](#) illustrates a test setup scenario. AWR2944EVM is mounted on the rear end of the mid-size car



图 3-3. Test Setup

3.3 Test Results

The results in [图 3-4](#), [图 3-5](#), and [图 3-6](#) correspond to the maximum range detected for mid-size SUVs and motorbikes.

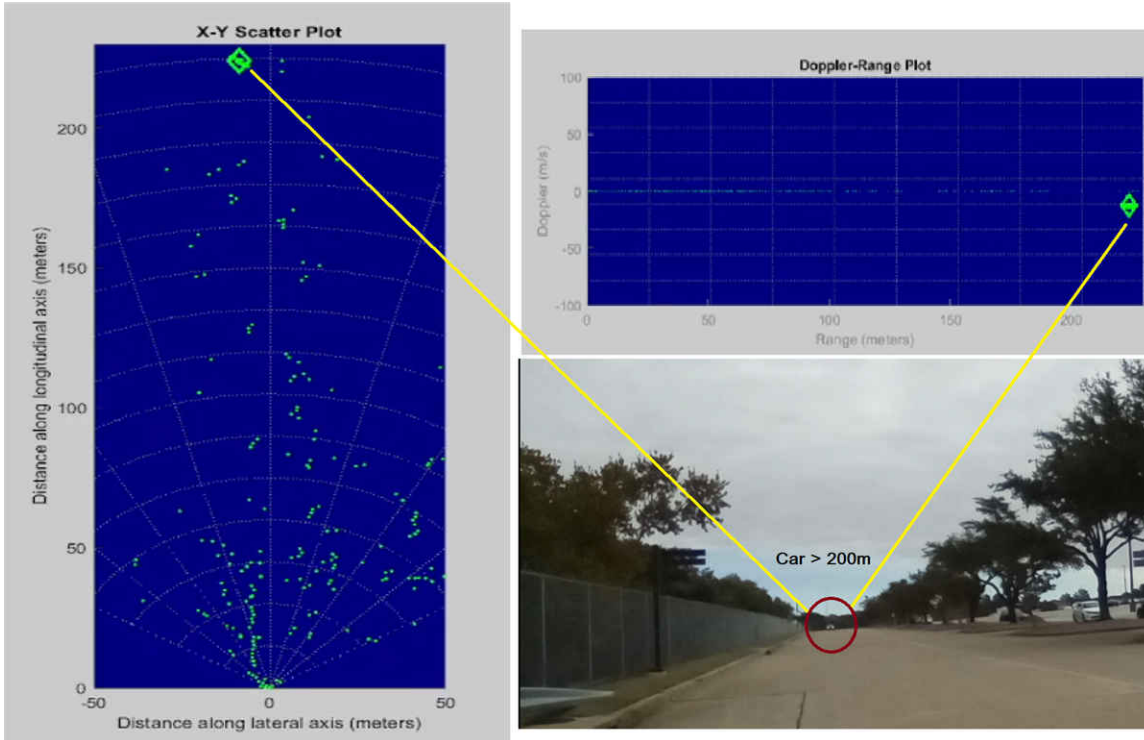


图 3-4. Test Result (Car Approximately 200 m)

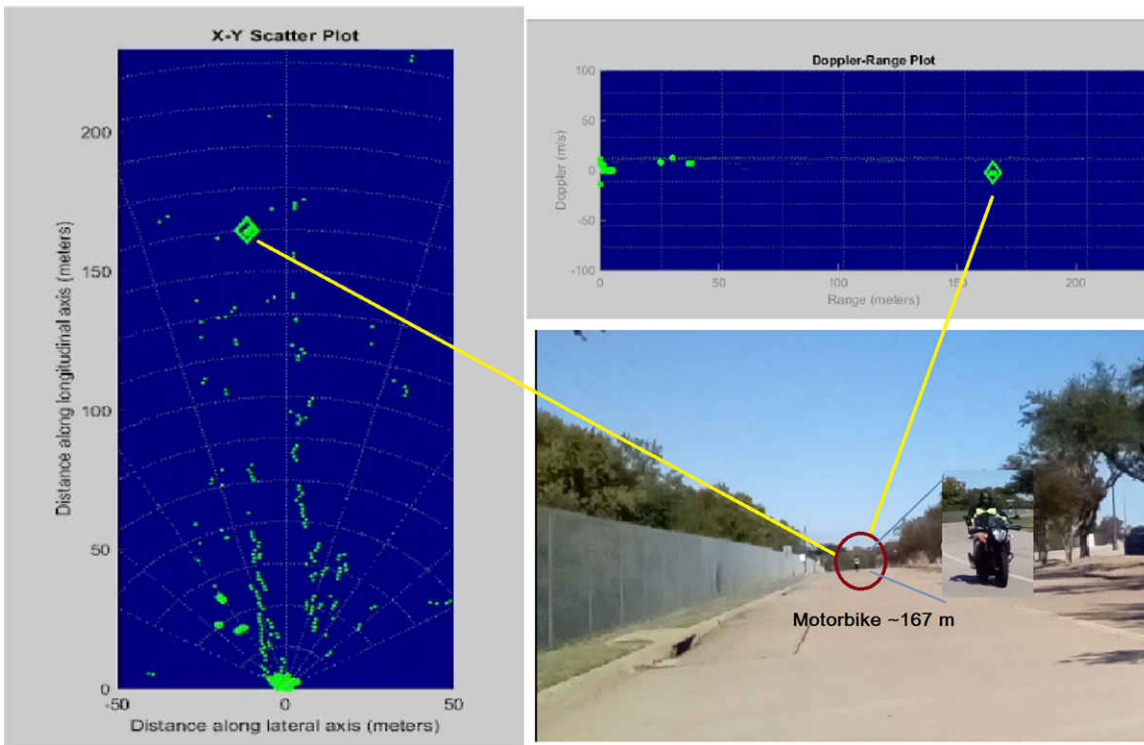


图 3-5. Test Result (Bike Approximately 170 m)

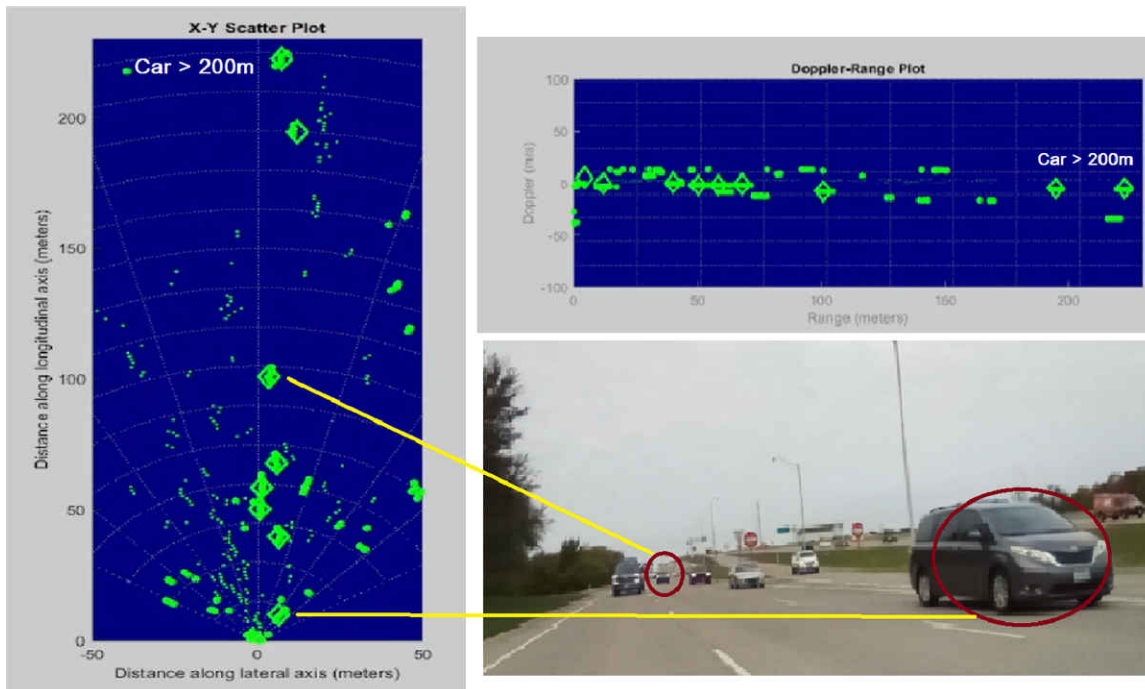


图 3-6. Test Result Highway

4 Design and Documentation Support

4.1 Design Files

4.1.1 Schematics

To download the schematics, see the design files at [TIDEP-01027](#).

4.1.2 BOM

To download the bill of materials (BOM), see the design files at [TIDEP-01027](#).

4.2 Tools and Software

Tools

Code Composer Studio (CCS)

Code Composer Studio™ software is an integrated development environment (IDE) that supports TI's microcontroller (MCU) and embedded processor portfolios. This tool is used to build and debug the software and processing chain of the application.

Software

Application Software

Software for the TIDEP-01027 is hosted on the TI resource explorer, look for High-End Corner Radar under labs at this [link](#).

4.3 Documentation Support

1. Texas Instruments, [AWR2944EVM User ' s Guide](#)
2. Texas Instruments, [TCAN1043xx-Q1 Low-Power Fault Protected CAN Transceiver with CAN FD and Wake data sheet](#)
3. Texas Instruments, [TMP112x High-Accuracy, Low-Power, Digital Temperature Sensors With SMBus and Two-Wire Serial Interface in SOT563 data sheet](#)
4. Texas Instruments, [Group Tracker Parameter Tuning Guide for the 3D People Counting Demo](#)
5. Kellner, D., et al. *Instantaneous ego-motion estimation using Doppler radar*. in *16th International IEEE Conference on Intelligent Transportation Systems (ITSC 2013)*. 2013.

4.4 支持资源

[TI E2E™ 支持论坛](#)是工程师的重要参考资料，可直接从专家获得快速、经过验证的解答和设计帮助。搜索现有解答或提出自己的问题可获得所需的快速设计帮助。

链接的内容由各个贡献者“按原样”提供。这些内容并不构成 TI 技术规范，并且不一定反映 TI 的观点；请参阅 TI 的《[使用条款](#)》。

4.5 Trademarks

TI E2E™, BoosterPack™, Code Composer Studio™, and are trademarks of Texas Instruments.

Arm® and Cortex® are registered trademarks of Arm Limited.

MATLAB® is a registered trademark of The MathWorks, Inc..

所有商标均为其各自所有者的财产。

5 About the Author

JITENDRA GUPTA is an application engineer at Texas Instruments where he is responsible for designing software for radar processing chain. Jitendra has been with TI since 2011 and has been involved in the design of various products related to wireless communication.

重要声明和免责声明

TI“按原样”提供技术和可靠性数据（包括数据表）、设计资源（包括参考设计）、应用或其他设计建议、网络工具、安全信息和其他资源，不保证没有瑕疵且不做任何明示或暗示的担保，包括但不限于对适销性、某特定用途方面的适用性或不侵犯任何第三方知识产权的暗示担保。

这些资源可供使用 TI 产品进行设计的熟练开发人员使用。您将自行承担以下全部责任：(1) 针对您的应用选择合适的 TI 产品，(2) 设计、验证并测试您的应用，(3) 确保您的应用满足相应标准以及任何其他功能安全、信息安全、监管或其他要求。

这些资源如有变更，恕不另行通知。TI 授权您仅可将这些资源用于研发本资源所述的 TI 产品的应用。严禁对这些资源进行其他复制或展示。您无权使用任何其他 TI 知识产权或任何第三方知识产权。您应全额赔偿因在这些资源的使用中对 TI 及其代表造成的任何索赔、损害、成本、损失和债务，TI 对此概不负责。

TI 提供的产品受 [TI 的销售条款](#) 或 [ti.com](#) 上其他适用条款/TI 产品随附的其他适用条款的约束。TI 提供这些资源并不会扩展或以其他方式更改 TI 针对 TI 产品发布的适用的担保或担保免责声明。

TI 反对并拒绝您可能提出的任何其他或不同的条款。

邮寄地址：Texas Instruments, Post Office Box 655303, Dallas, Texas 75265

Copyright © 2022，德州仪器 (TI) 公司