

TI Designs: PMP15040

适用于空间受限的工业传感器的宽输入电压电源参考设计



说明

此参考设计提供有关如何在空间限制是首要考虑因素时为传感器应用中的 FPGA、ASIC 或 MCU 供电的示例。6V 至 60V 的宽输入电压范围和超小且非常高效的直流/直流转换器的使用使该设计非常适合工业传感器、现场发射器、电机驱动器和 PLC 模块等应用。输出电压是可调的，能够适应用户的特定需求。

资源

PMP15040	设计文件夹
LMR36006	产品文件夹
LMR36015	产品文件夹



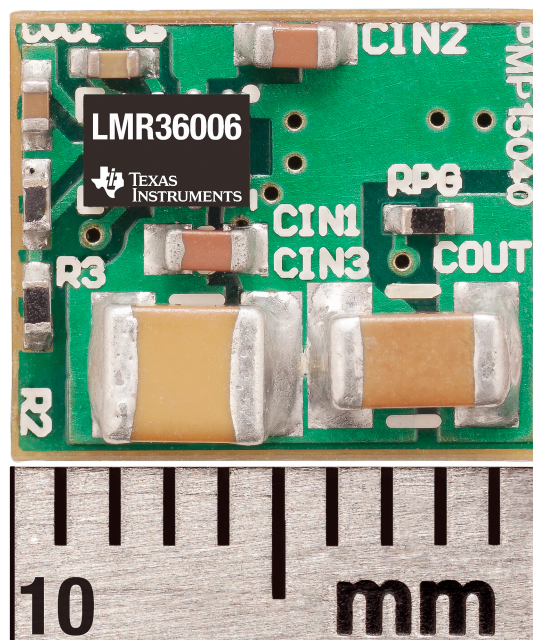
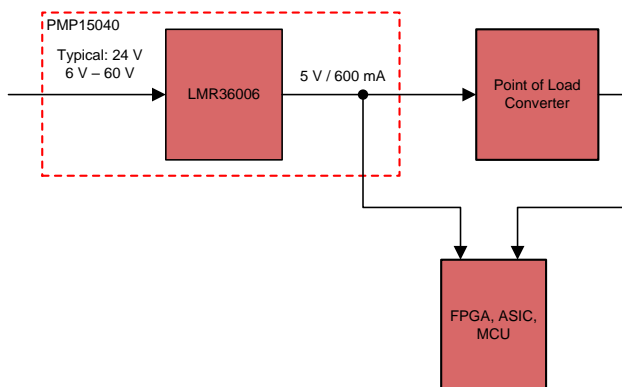
咨询我们的 E2E 专家

特性

- 经优化的解决方案尺寸 – 8.3mm x 10mm
 - 低组件数
 - 双面组装板
 - 1MHz 开关频率
 - 严格的电流限制
- 宽输入电压（6V 至 60V）范围，以适应导通时间
- 采用安静开关节点的低噪特征
- 输出轨：
 - 600mA 时为 5V（精度 $\pm 1.5\%$ ）
 - 电压可根据特定用户要求进行调整

应用

- 工厂自动化 – 位移变送器
- 工厂自动化 - 流量发送器
- 工厂自动化 - 机器视觉
- 电机驱动 - 交流驱动器 - 交流位置反馈



该 TI 参考设计末尾的重要声明表述了授权使用、知识产权问题和其他重要的免责声明和信息。

1 System Description

The PMP15040 is optimized for size-sensitive sensor applications, specifically Field Transmitters and AC Drive Feedback systems. The standard power stage uses a Wide Vin DC/DC converter that enables peak efficiency > 90% as shown in 图 18.

A displacement transmitter uses an analog front-end to convert a signal of a sensor to an electrical representation and digital processor to convert this signal to a digital representation. A standard displacement transmitter uses a non-isolated Wide Vin DC/DC converter as the primary power stage. 图 1 highlights the PMP15040 standard placement within the field transmitter system.

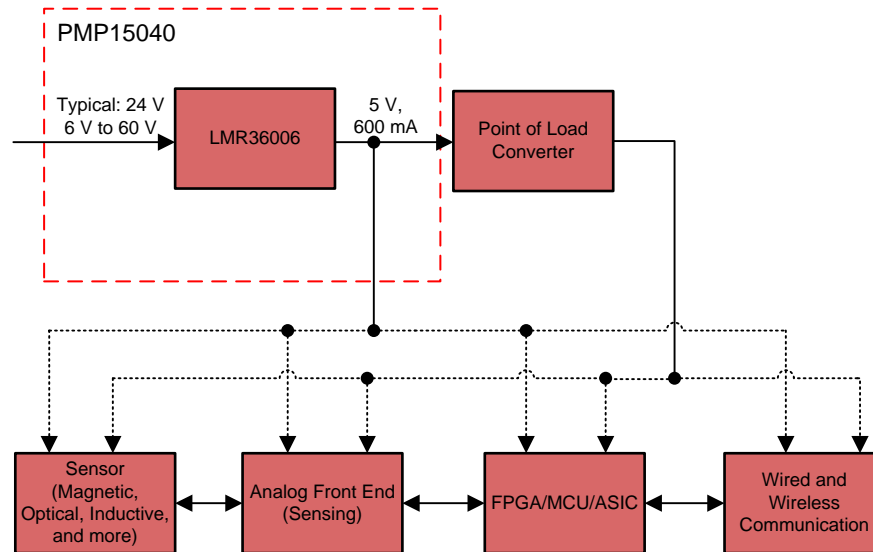


图 1. PMP15040 Field Transmitter Block Diagram

An AC Drive Feedback system converts SIN/COS differential inputs from the resolver or encoder to digital outputs, which enables accurate rotor position feedback of AC drives. AC Drive Position Feedback uses a non-isolated Wide Vin DC/DC converter as the primary power stage paired with a Point-of-Load DC/DC converter. These two power rails are necessary to power the Digital Processing component of the system. 图 2 highlights PMP15040 standard placement within the AC Drive Position Feedback system.

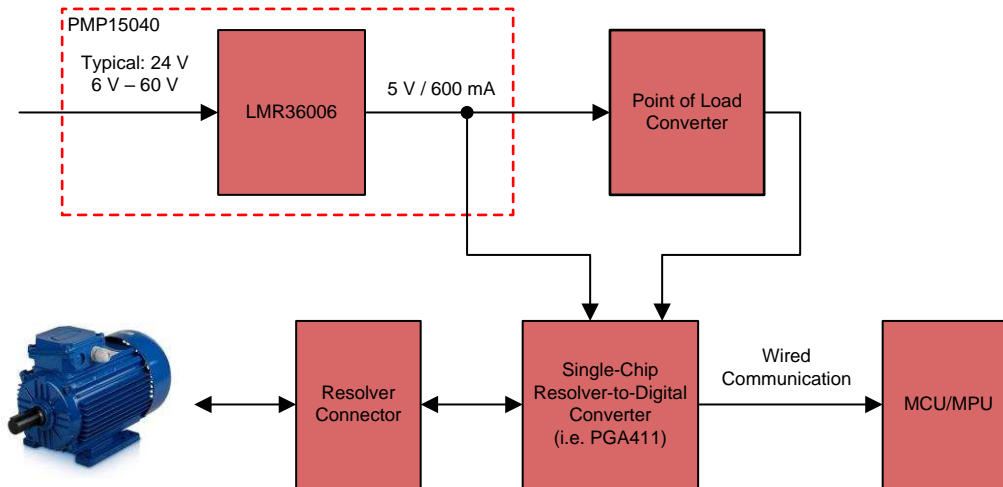


图 2. PMP15040 Rotary Encoder Block Diagram

1.1 Key System Specifications

表 1. Key System Specifications

PARAMETER	SPECIFICATIONS
V_{IN} minimum	6-V
V_{IN} maximum	60-V
V_{IN} nominal	24-V
V_{OUT}	5-V
I_{OUT}	600-mA
F_{SW}	1-MHz
X - Dimension	8.3-mm
Y - Dimension	10-mm

2 System Overview

2.1 Block Diagrams

图 3 shows the PMP15040 block diagram.

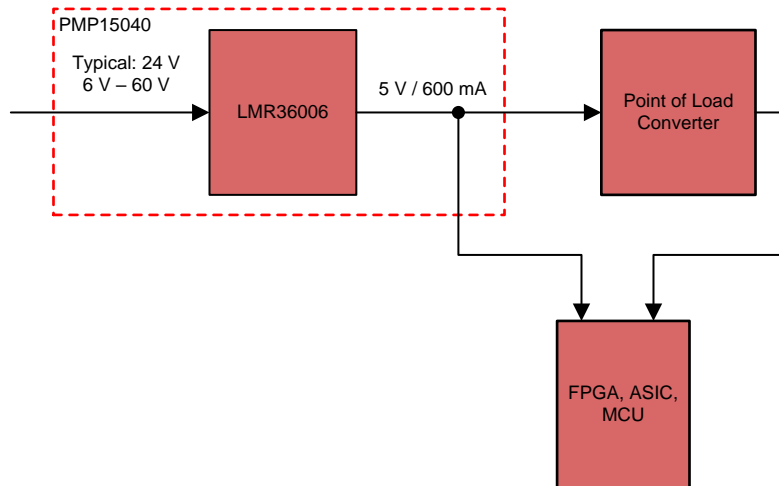


图 3. PMP15040 General Block Diagram

2.2 Highlighted Products

2.2.1 LMR36006

Features:

- Synchronous buck converter
- Wide operation input voltage: 4.2 V to 60 V (with transient protection up to 66 V)
- 1-MHz switching frequency
- Low quiescent current: 25 μ A
- -40°C to $+150^{\circ}\text{C}$ junction temperature range
- Adjustable 1-V to 28-V output
- Maximum current load: 600 mA for LMR36006 and 1.5 A for LMR36015
- QFN package: 3 mm \times 2 mm

2.3 System Design Theory

The PMP15040 highlights the 8.3 mm \times 10 mm optimized solution size of the LMR36006. The synchronous buck converter, LMR36006, is a wide-input voltage range, low-quiescent current, high performance regulator with internal compensation. The LMR36006 is optimal for size-constraint applications because the LMR36006 has a 3-mm \times 2-mm QFN package size, 1-MHz switching frequency, and a tight current limit. 图 6 shows the schematic of the front-end DC/DC converter. 图 4 and 图 5 show the images of the front and back side of PMP15040 board.

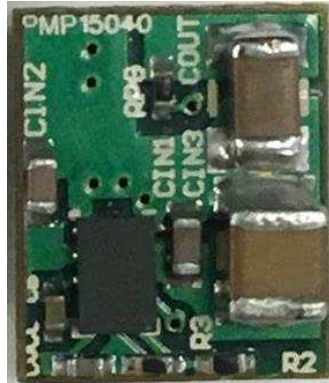


图 4. Front of the PMP15040 Board



图 5. Back of the PMP15040 Board

The operating frequency for the LMR36006 regulator is 1 MHz, and the device implements a precise current limit. Consequently, the output filter size and component values are minimized. The LMR36006 offers three operating switching frequency variants: 400 kHz, 1 MHz, and 2.1 MHz. The 1-MHz switching frequency provides peak efficiency greater than 90% at 12 V_{IN} , and peak efficiency greater than 80% at 24 V_{IN} . When the user selects the 1-MHz variant, the inductance range can be decreased from 40 μH – 50 μH to 10 μH – 25 μH . When the user selects an inductor with an inductance of 18 μH , the inductor should be capable of handling a maximum current of 1.2 A. Ultimately, inductor manufacturers have a wide selection of 18- μH inductors in a 4-mm \times 4-mm package size. The PMP15040 uses a 18- μH inductor with a C_{OUT} of 22 μF .

For the PMP15040, the LMR36006 output voltage is set to 5 V with a resistor divider from FB to V_{OUT} . The top feedback resistor (R_{FBT}) is set to 100 k Ω , and the bottom resistor (R_{FBB}) is calculated using 公式 1. V_{REF} is nominally 1 V.

$$R_{FBB} = \frac{R_{FBT}}{\left[\frac{V_{OUT}}{V_{REF}} - 1 \right]} \quad (1)$$

For this 5-V example, values are $R_{FBT} = 100 \text{ k}\Omega$ and $R_{FBB} = 24.9 \text{ k}\Omega$. Depending on the power requirement of the downstream digital component, the output voltage can be adjusted. For example, for a MCU which require a typical power rail of 3.3 V, the output voltage can be adjusted.

To scale the output voltage for specific system requirements, the output feedback resistors can be resized. For example, if a MCU requires a typical power rail of 3.3-V, the output voltage can be adapted by recalculating R_{FBB} . For this 3.3-V example values would be $R_{FBT} = 100 \text{ k}\Omega$ and $R_{FBB} = 43.5 \text{ k}\Omega$. Furthermore, the PMP15040 output filter (L1 and C_{OUT}) will support the output voltage adjustment.

When scaling the output voltage from 5 V to 3.3 V, the corresponding output power capability of the LMR36006 will decrease from 3 W to 2 W. To increase the power capability of the PMP15040 to 7.5 W at 5 V_{OUT} and 5 W at 3.3 V_{OUT} , the pin-compatible LMR36015 offers a 1.5-A maximum output load current. To adapt the design to the LMR36015, the output filter (L1 and C_{OUT}) must be modified appropriately. TI recommends to modify the L1 to 4.7 μH and modify the C_{OUT} to 33 μF . Also, the saturation current of the inductor must support the increased current capability and peak current limit of 3 A. Powered iron cores exhibit a soft saturation current, allowing some relaxation in the current rating of the inductor.

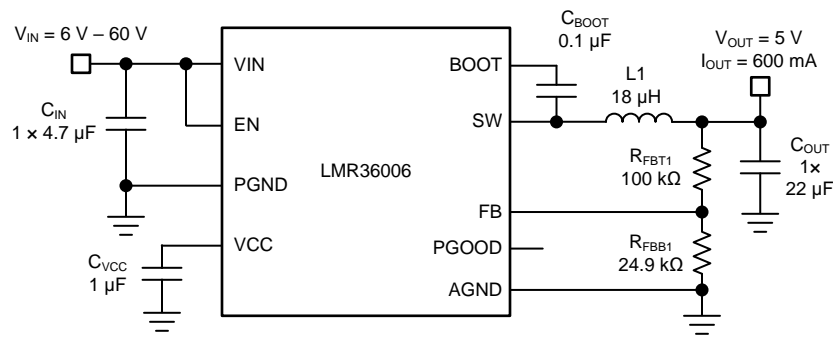


图 6. LMR36006 Schematic

The LMR36006 and LMR36015 devices are designed with a flip-chip or HotRod technology, which greatly reduces the parasitic inductance of the pins. Package lead inductance substantially increases the switch node ringing and the corresponding EMI performance. A wire-bond package, 图 7, has significant lead inductance compared to a flipped-chip, on-lead (FCOL) package, 图 8. HotRod technology eliminates wire bonds by attaching the silicon die directly the lead frame. Consequently HotRod technology lowers $R_{DS,ON}$, parasitic lead inductance, and dramatically reduces switch node ringing. The switch node waveforms of a wire bond package and a HotRod package can be seen in 图 9 and 图 10.

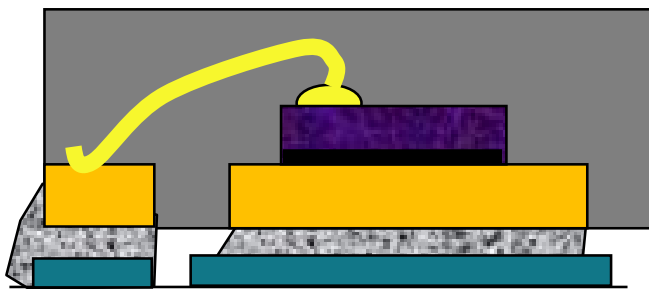


图 7. Standard QFN Package

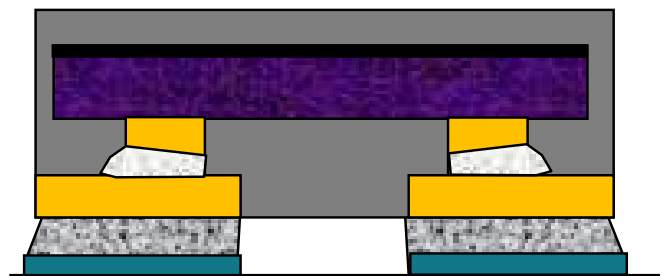


图 8. FCOL QFN Package

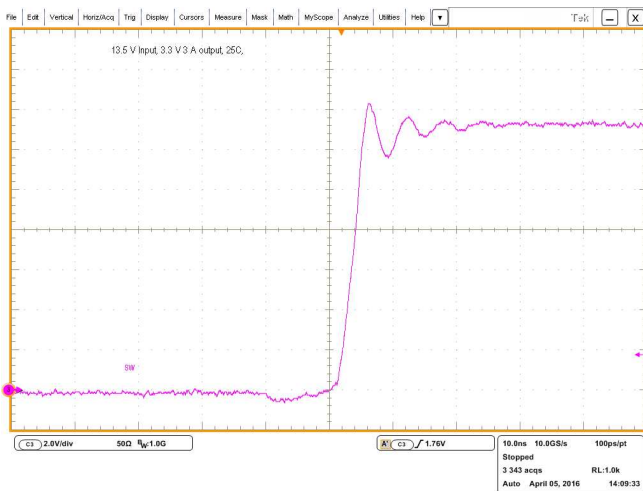


图 9. Wirebond Device Scope Switch Node Signal

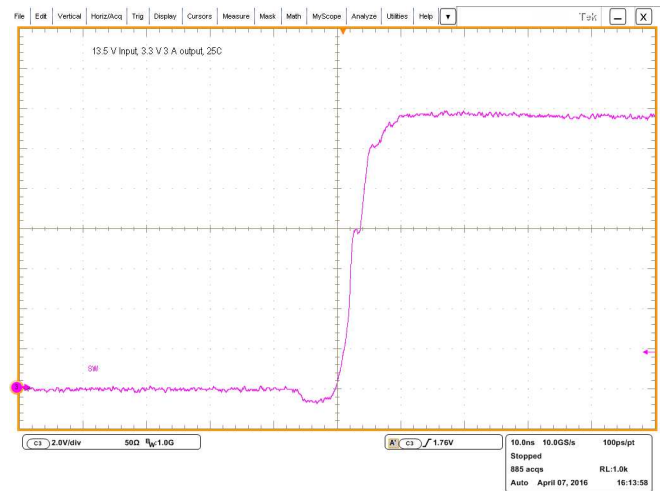


图 10. FCOL QFN Device Scope Switch Node Signal

The LMR36006 HotRod package enables the smallest die to package ratio and ultimately enables an optimized layout and total solution size of 8.3 mm × 10 mm shown in 图 11. The optimized layout is highlighted in 图 12 and 图 13.

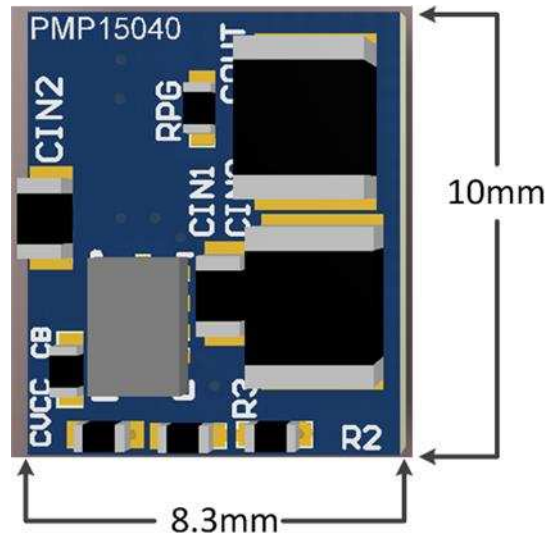


图 11. PMP15040 Board Dimensions

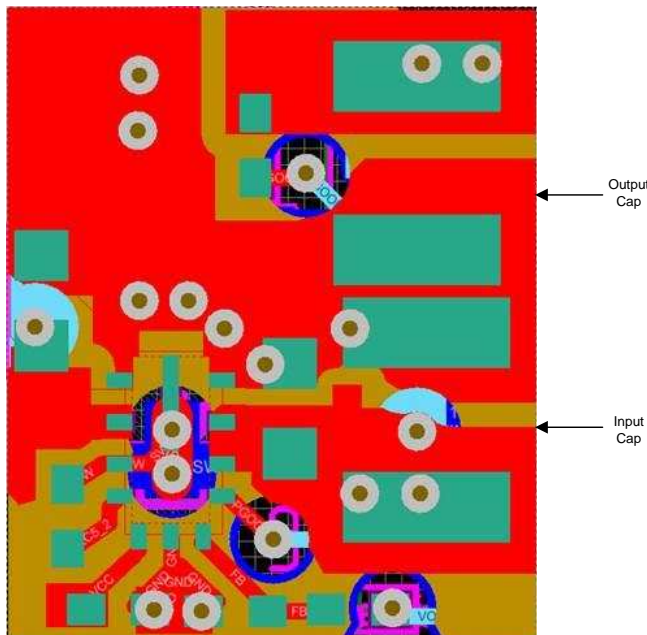


图 12. PMP15040 PCB Layout: Top Layer



图 13. PMP15040 PCB Layout: Bottom Layer

For design calculations and layout examples, see the relevant data sheet for the devices:

- [LMR36006 4.2-V to 60-V, 0.6-A Synchronous Step-Down Converter in HotRod™ Package \(SNVSB48\)](#)
- [LMR36015 4.2-V to 60-V, 1.5-A Synchronous Step-Down Converter in HotRod™ Package \(SNVSB49\)](#)

3 Hardware, Testing Requirements, and Test Results

3.1 Required Hardware

3.1.1 Hardware

These steps outline the hardware setup:

1. Connect a DC power supply to the board input as shown in 图 14.
2. Connect an electronic or resistive load to the LMR36006 output (V_{OUT}), as shown in 图 14, to imitate the typical load.

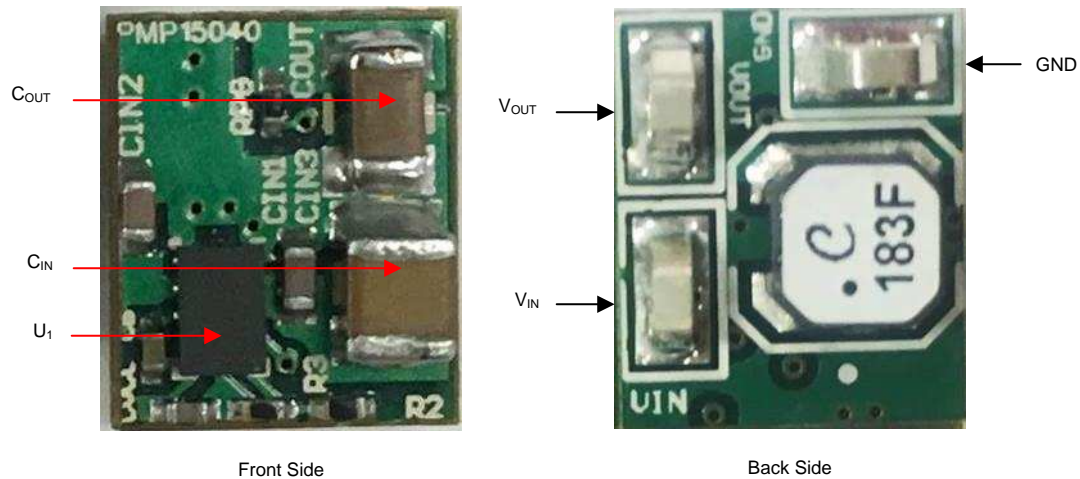


图 14. PMP15040 Board Setup

3.2 Testing and Results

The following diagrams show the design performance.

3.2.1 Thermal Data

The infrared (IR) thermal image in 图 15 was taken at steady state with 24 V_{IN} and the LMR36006 output at a load of 10 mA (no airflow). The ambient temperature is approximately 22°C. The maximum IC temperature is 28.4°C.

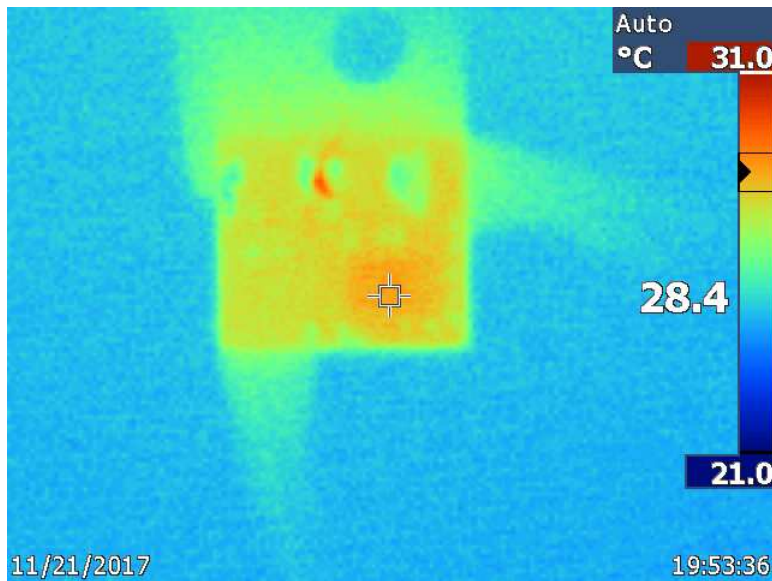


图 15. Thermal Image at 24 V_{IN}, 5 V_{OUT}, 10 mA I_{OUT}

The infrared (IR) thermal image in 图 16 was taken at the steady state with 24 V_{IN} and the LMR36006 output at a load of 300 mA (no airflow). The ambient temperature is approximately 22°C. The maximum IC temperature is 68°C.

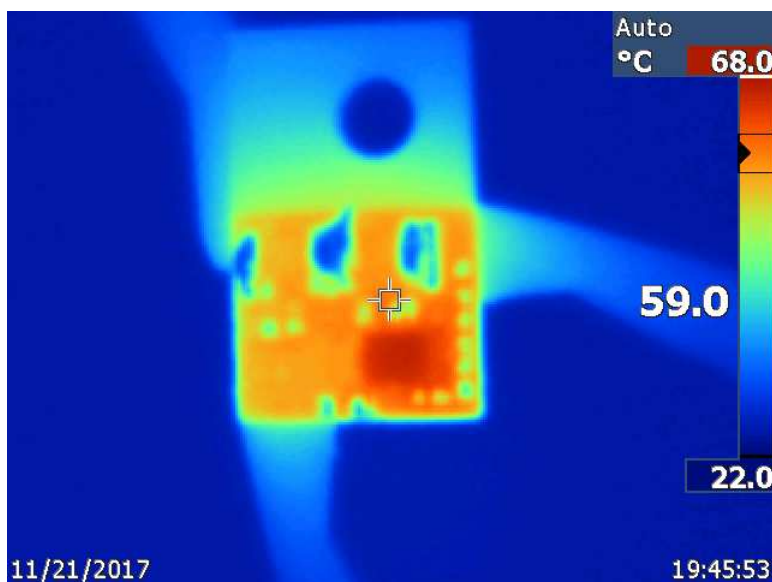


图 16. Thermal Image at 24 V_{IN}, 5 V_{OUT}, 300 mA I_{OUT}

The infrared (IR) thermal image in 图 17 was taken at the steady state with 24 V_{IN} and the LMR36006 output at a load of 600 mA (no airflow). The ambient temperature is approximately 22°C. The maximum IC temperature is 85°C.

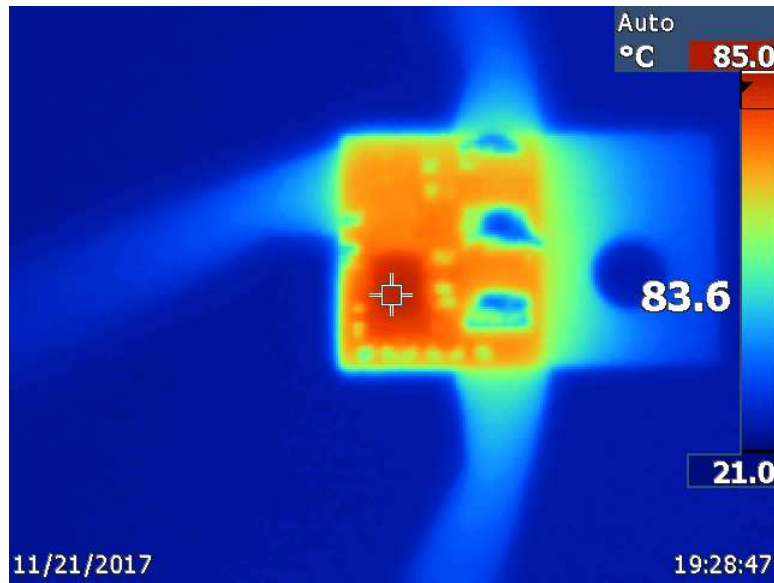


图 17. Thermal Image at 24 V_{IN}, 5V_{OUT}, 600 mA I_{OUT}

3.2.2 Efficiency Data

图 18 shows the PMP15040 efficiency data versus a load current.

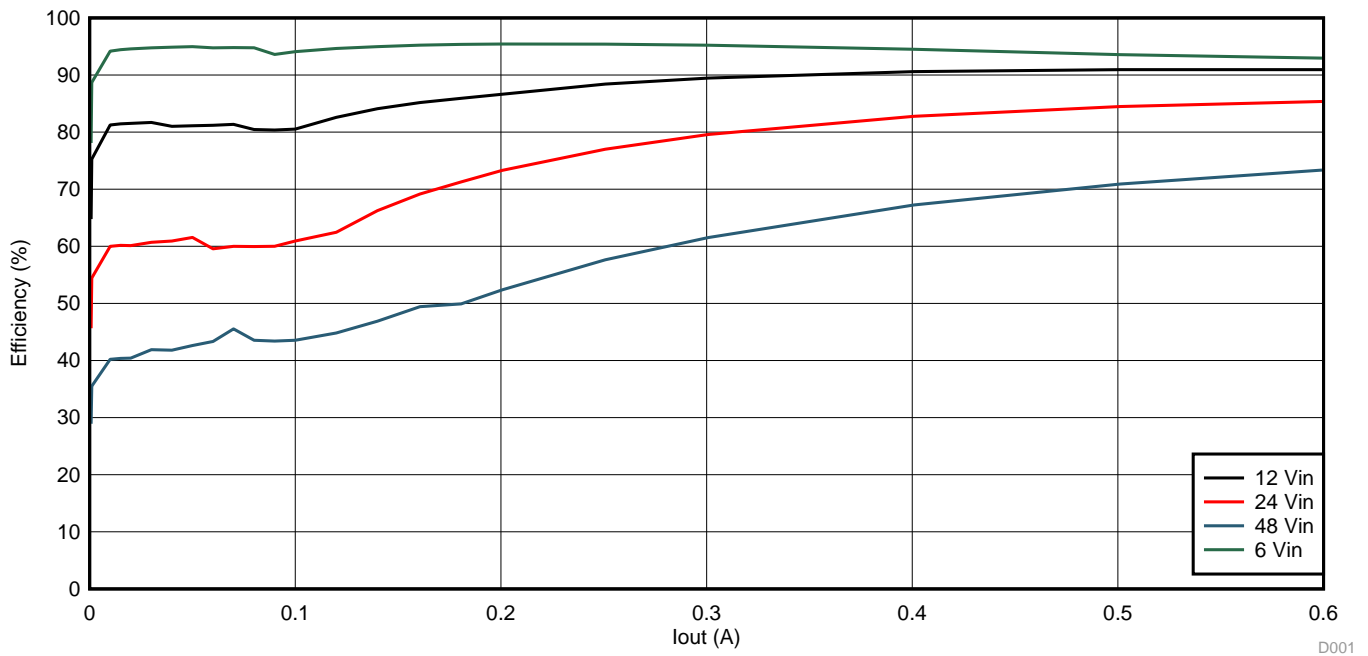


图 18. Efficiency vs. Output Current

3.2.3 Start-Up Waveforms

图 19 shows the start-up waveform at 24-V input and no load. 图 20 shows the start-up waveform at 24-V input and 600-mA load.

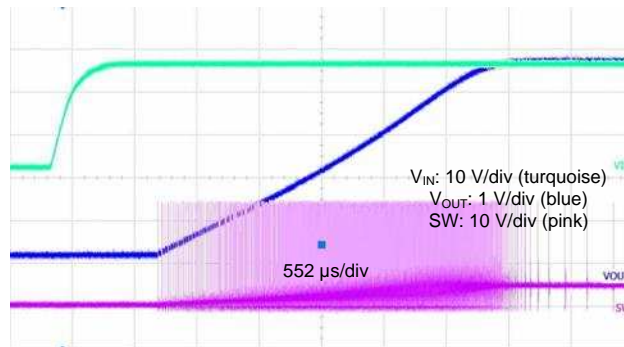


图 19. Start-Up Waveform: $V_{IN} = 24\text{ V}$, $I_{OUT} = 0\text{ A}$

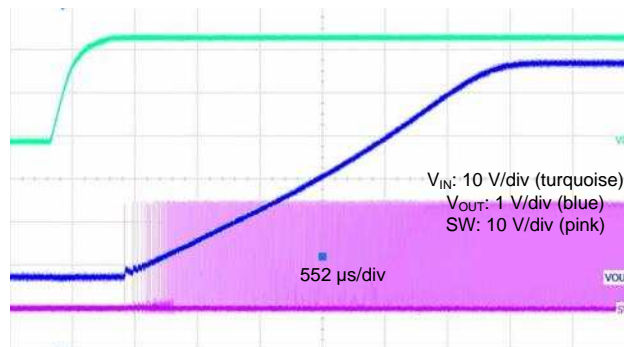


图 20. Start-Up Waveform: $V_{IN} = 24\text{ V}$, $I_{OUT} = 600\text{ mA}$

3.2.4 Switch Node and Output Voltage Ripple

图 21 shows the steady-state switch-node voltage and output voltage ripple at 24 V_{IN} and 0-A load. 图 22 shows the steady-state, switch-node voltage and output voltage ripple at 24 V_{IN} and 600-mA load. 图 23 shows the steady-state switch-node voltage and output voltage ripple at 60 V_{IN} and 0-A load. 图 24 shows the steady-state, switch-node voltage and output voltage ripple at 60 V_{IN} and 600-mA load.

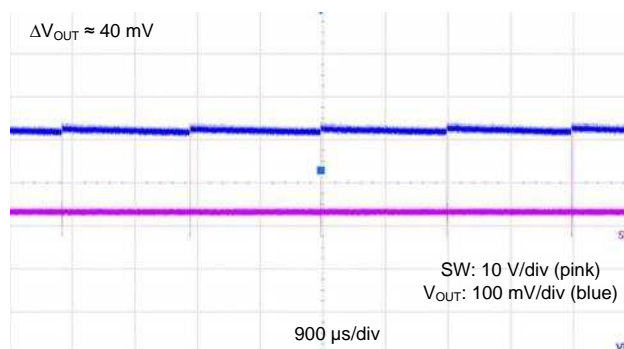


图 21. Steady-State Waveform: $V_{IN} = 24\text{ V}$, $I_{OUT} = 0\text{ A}$

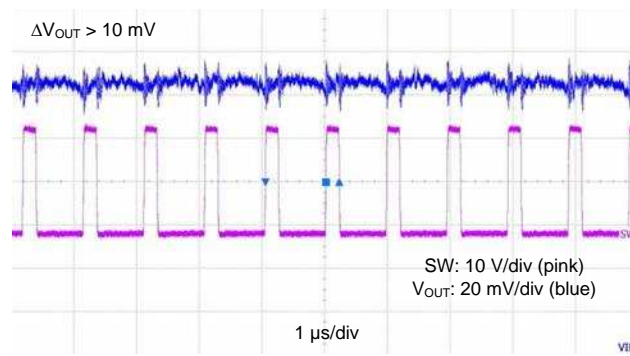


图 22. Steady-State Waveform: $V_{IN} = 24 \text{ V}$, $I_{OUT} = 600 \text{ mA}$

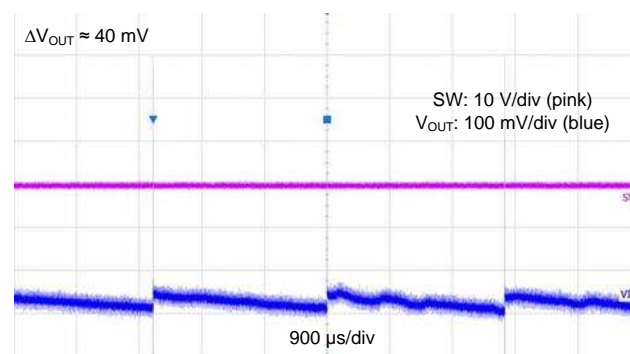


图 23. $V_{IN} = 60 \text{ V}$, $I_{OUT} = 0 \text{ A}$

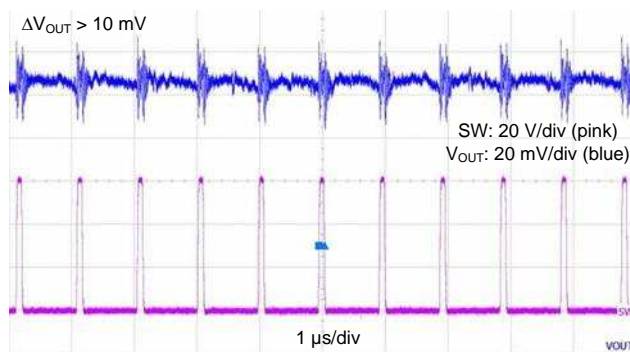


图 24. $V_{IN} = 60 \text{ V}$, $I_{OUT} = 600 \text{ mA}$

3.2.5 Load Transient

The load transient waveforms monitor the output voltage and the load current. Channel 1 (blue) shows the output current of the LMR36006 (I_{OUT}). Channel 2 (purple) shows the output voltage of the LMR36006 (V_{OUT}). 图 25 and 图 26 show the load transient results.

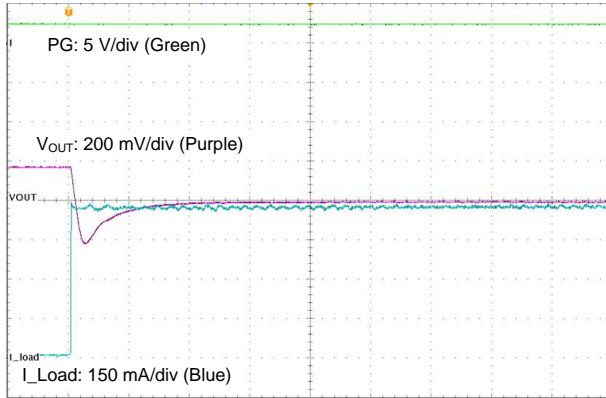


图 25. Load Transient: $I_{OUT} = 0 \text{ A}$ to 600 mA , $V_{IN} = 24 \text{ V}$,
 $t_r = 1 \text{ A}/\mu\text{s}$

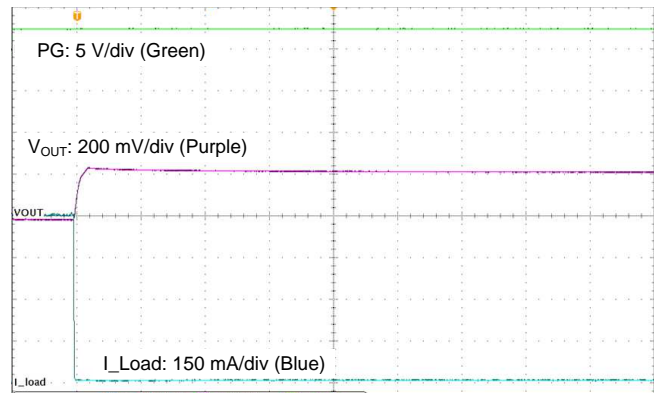


图 26. Load Transient: $I_{OUT} = 600 \text{ mA}$ to 0 A , $V_{IN} = 24 \text{ V}$,
 $t_f = 1 \text{ A}/\mu\text{s}$

4 Design Files

4.1 Schematics

To download the schematics, see the design files at [PMP15040](#).

4.2 Bill of Materials

To download the bill of materials (BOM), see the design files at [PMP15040](#).

4.3 PCB Layout Recommendations

4.3.1 Layout Prints

To download the layer plots, see the design files at [PMP15040](#).

4.4 Altium Project

To download the Altium project files, see the design files at [PMP15040](#).

4.5 Gerber Files

To download the Gerber files, see the design files at [PMP15040](#).

4.6 Assembly Drawings

To download the assembly drawings, see the design files at [PMP15040](#).

5 Related Documentation

1. [LMR36006 4.2-V to 60-V, 0.6-A Synchronous Step-Down Converter in HotRod™ Package](#) (SNVSB48)
2. [LMR36015 4.2-V to 60-V, 1.5-A Synchronous Step-Down Converter in HotRod™ Package](#) (SNVSB49)
3. [Powering up the Performance of Sensitive Test and Measurement Systems](#), blog

5.1 商标

All trademarks are the property of their respective owners.

修订历史记录

注：之前版本的页码可能与当前版本有所不同。

Changes from Original (June 2018) to A Revision	Page
• Changed <i>Efficiency vs. Output Current</i> graph	10

重要声明和免责声明

TI 提供技术和可靠性数据（包括数据表）、设计资源（包括参考设计）、应用或其他设计建议、网络工具、安全信息和其他资源，不保证没有瑕疵且不做任何明示或暗示的担保，包括但不限于对适销性、某特定用途方面的适用性或不侵犯任何第三方知识产权的暗示担保。

这些资源可供使用 TI 产品进行设计的熟练开发人员使用。您将自行承担以下全部责任：(1) 针对您的应用选择合适的 TI 产品，(2) 设计、验证并测试您的应用，(3) 确保您的应用满足相应标准以及任何其他安全、安保或其他要求。这些资源如有变更，恕不另行通知。TI 授权您仅可将这些资源用于研发本资源所述的 TI 产品的应用。严禁对这些资源进行其他复制或展示。您无权使用任何其他 TI 知识产权或任何第三方知识产权。您应全额赔偿因在这些资源的使用中对 TI 及其代表造成的任何索赔、损害、成本、损失和债务，TI 对此概不负责。

TI 提供的产品受 TI 的销售条款 (<https://www.ti.com.cn/zh-cn/legal/termsofsale.html>) 或 [ti.com.cn](https://www.ti.com.cn) 上其他适用条款/TI 产品随附的其他适用条款的约束。TI 提供这些资源并不会扩展或以其他方式更改 TI 针对 TI 产品发布的适用的担保或担保免责声明。

邮寄地址：上海市浦东新区世纪大道 1568 号中建大厦 32 楼，邮政编码：200122
Copyright © 2021 德州仪器半导体技术（上海）有限公司