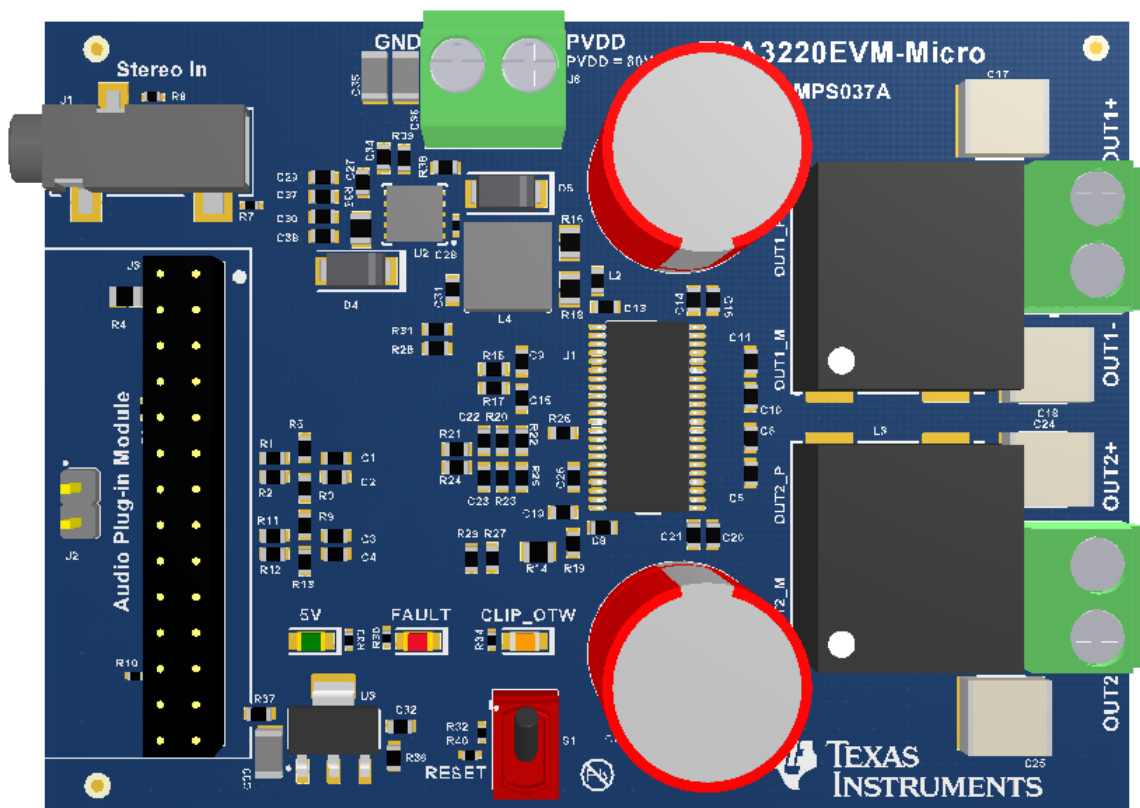




TPA3220 Evaluation Module Micro

This user's guide describes the characteristics, operation, and use of the TPA3220 Evaluation Module Micro. A complete printed-circuit board (PCB) description, schematic diagram, and bill of materials (BOM) are also included.



Contents

1	Quick Start (BTL MODE)	3
2	Setup By Mode	5
3	Hardware Configuration	7
4	EVM Design Documents	13
5	Schematic and Bill of Materials.....	15

List of Figures

1	Output Configuration BTL	3
2	EVM Board (Top Side)	4
3	EVM Board (Bottom Side)	4
4	Output Configuration PBTL - 4 Inductors.....	5
5	Filter Frequency Response	11
6	TPA3220EVM-Micro Top Composite Assembly	13
7	TPA3220EVM-Micro Bottom Composite Assembly	13
8	TPA3220EVM-Micro Board Dimensions	14
9	TPA3220EVM-MICRO Schematic 1	15
10	TPA3220EVM-MICRO Schematic 2	16

List of Tables

1	Jumper and Switch Configurations (BTL Mode).....	4
2	Jumper and Switch Configurations (PBTL Mode)	6
3	Fault and Clip Overtemperature Status	7
4	Frequency Adjust Master Mode Selection	7
5	HEAD and AD Mode Selection	8
6	Output Mode and Modulation Mode Selection.....	8
7	Default Mode Configuration	9
8	LDO Mode Configuration	9
9	Non-5-V Supply Configuration	10
10	External 5-V Supply Mode Configuration	10
11	AIB Connector (J3) Pinout	12
12	Bill of Materials	17

Trademarks

CoilCraft is a trademark of CoilCraft, Inc.

All other trademarks are the property of their respective owners.

1 Quick Start (BTL MODE)

The following section describes the necessary hardware, connections, configuration, and steps to quick start the EVM into BTL mode with stereo audio playing out of two speakers.

Figure 1 illustrates the BTL mode output configuration

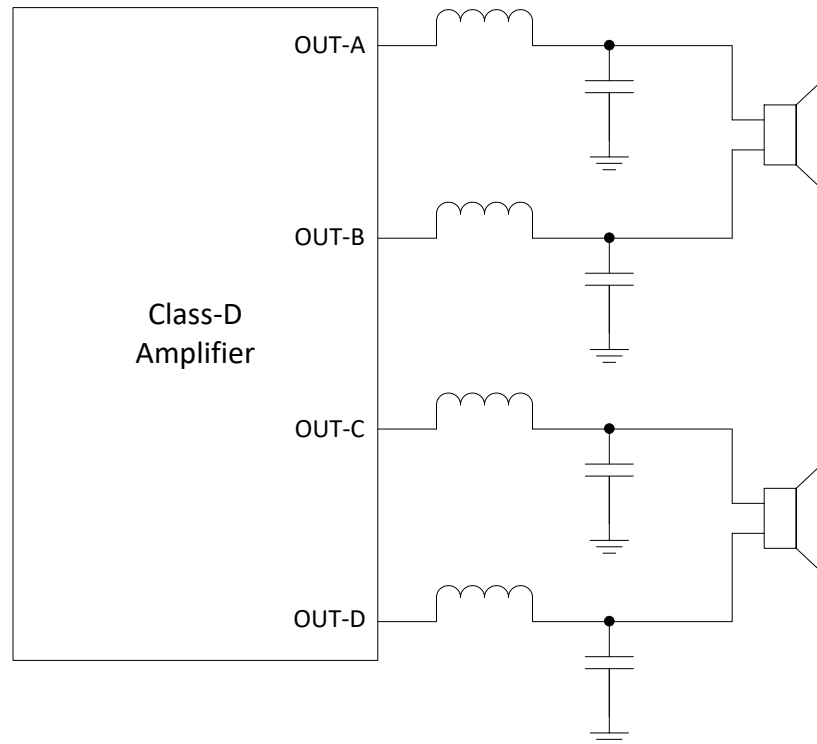


Figure 1. Output Configuration BTL

1.1 Required Hardware

The following hardware is required for this EVM:

- TPA3220EVM-Micro
- Power supply 5–14 A, 12–30 VDC
- Two 2–8 Ω speaker or resistor loads (ensure speaker or load is appropriately sized for required wattage output)
- Four 12–20 AWG wires
- One XLR to 3.5-mm audio jack
- Analog output audio source

1.2 Connections and Board Configuration

Figure 2 and Figure 3 illustrate the top and bottom of the EVM.

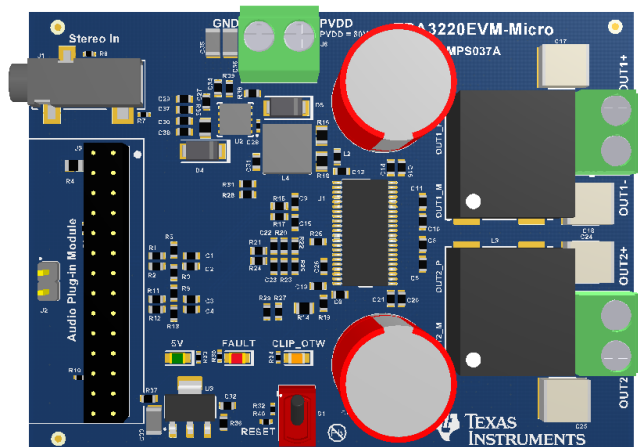


Figure 2. EVM Board (Top Side)

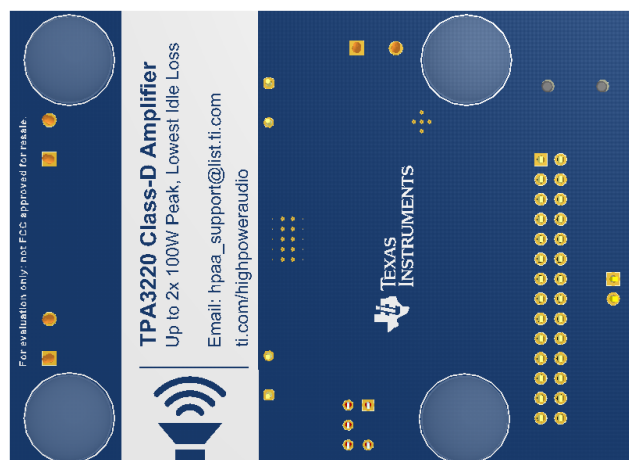


Figure 3. EVM Board (Bottom Side)

Use the following steps when connecting and configuring the board in BTL MODE:

1. Ensure the power supply is OFF. Connect the power supply positive terminal to J6 PVDD and negative terminal to J6 GND.
2. Connect the left channel speaker, power resistor load (3–8 Ω) to the TPA3220EVM-Micro positive output terminal (J4 OUT1+) and other side of the speaker, power resistor to the TPA3220EVM-Micro negative output terminal (J4 OUT1–).
3. Connect the right channel speaker, power resistor load (3–8 Ω) to the TPA3220EVM-Micro positive output terminal (J5 OUT2+) and other side of the speaker, power resistor to the TPA3220EVM-Micro negative output terminal (J5 OUT2–).
4. Check to make sure that the power supply is only connected to J6 and speakers are connected to J4 or J5 only, as their colors are the same.
5. Input Configuration:
 - a. **Differential Inputs:** Depopulate R3 and R13
 - b. **Single-Ended Inputs:** Populate R3 and R13
 - c. **Audio Interface Board Input:** Populate R1, R2, R11, and R12
6. Ensure that RESET S1 is in the lower position of RESET.
7. Check Table 1 for all necessary jumper and switch configurations.

Table 1. Jumper and Switch Configurations (BTL Mode)

Component	Component Description	Configuration for BTL
R28, R31	Gain/SLV Select	MSTR-34dB
R3, R13	Input DIFF or SE Select	SE = Populate
		DIFF = Remove
R1, R2, R11, R12	AIB Input Select	Populated
R27, R29	HEAD or AD Mode Select	HEAD = Populate R27, Remove R29
		AD = Remove R27, Populate R29
R22, R26	PBTL or BTL Select	Remove
S1	RESET Control	RESET
R25	FREQ_ADJ	MASTER MODE = 480kHz

1.3 Power-Up

Ensure that required connections and configurations have been checked. The TPA3220EVM-Micro board can now be powered on.

1. Enable the power supply at 12 V to 30 V and ensure that LED D2 illuminates. LEDs D1 and D3 should not be illuminated.
2. Switch S1 out of RESET. The FAULT LED (D1) should blink once quickly, then remain unilluminated.
3. Note that the EVM does not have volume control, configure your analog input for a reasonable audio level before beginning audio playback.
4. Enable audio input playback and the EVM should begin driving audio out of the left and right speakers. If resistor loads are used for testing instead of speakers, they will now be energized.

2 Setup By Mode

The following sections describe the setup and configuration for each output mode. The TPA3220DDV EVM-Micro allows for two output modes: Stereo BTL and Mono PBTL.

2.1 BTL MODE (Stereo - 2 Speaker Outputs)

This mode is the same as described in [Quick Start \(BTL MODE\)](#).

2.2 PBTL MODE (Mono – 1 Speaker Output)

This mode provides one speaker output that is more powerful than each BTL output and is useful when mono audio is to be played or when more power is needed.

[Figure 4](#) illustrates the PBTL mode output configuration with 4 inductors.

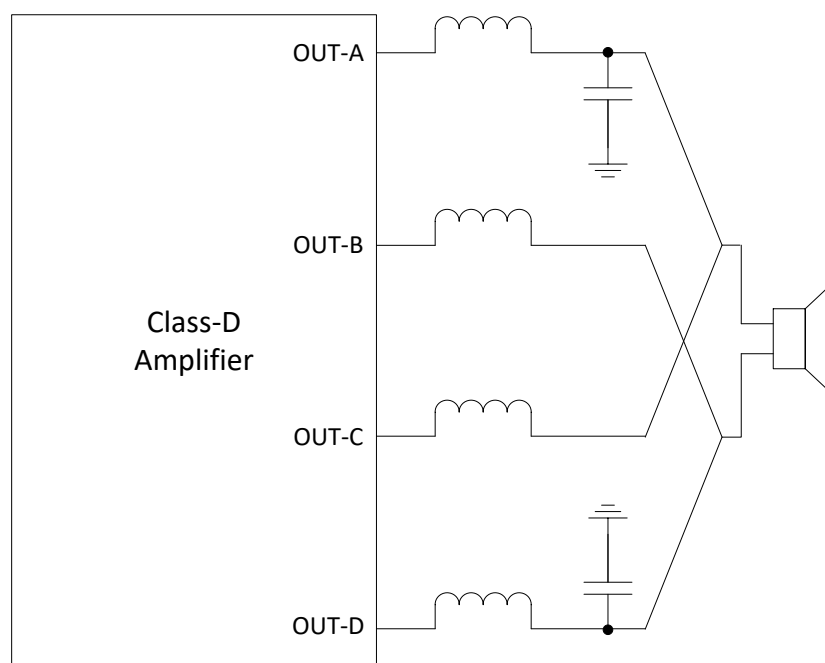


Figure 4. Output Configuration PBTL - 4 Inductors

2.2.1 Connections and Board Configuration

Use the following steps when connecting and configuring the board in BTL MODE:

1. Ensure the power supply is OFF. Connect the positive terminal of the power supply to J6 PVDD and negative terminal to J6 GND.
2. Connect one channel speaker, power resistor load (2–8 Ω) to the TPA3220EVM-Micro positive output

terminal (J4 OUT1+) and other side of the speaker, power resistor to the TPA3220EVM-Micro negative output terminal (J4 OUT1–).

3. Use a wire to connect J5 OUT2+ to J4 OUT1+, then use another wire to connect J5 OUT2– to J4 OUT1–. This forms a parallel connection of both OUTx+ to one side of the speaker and a parallel connection of both OUTx– to the other side of the speaker.
4. Check to make sure that the power supply is connected to J6 only and speakers are connected to J4 or J5 only, as their colors are the same.
5. Input Configuration:
 - a. **Differential Inputs:** Depopulate R3 and R13
 - b. **Single-Ended Inputs:** Populate R3 and R13
 - c. **Audio Interface Board Input:** Populate R1, R2, R11, and R12
6. Ensure that RESET S1 is in the lower position of RESET.
7. Check [Table 2](#) for all jumper and switch configurations necessary.

Table 2. Jumper and Switch Configurations (PBTL Mode)

Component	Component Description	Configuration for PBTL
R28, R31	Gain/SLV Select	MSTR-34dB
R3, R13	Input DIFF or SE Select	SE = Populate
		DIFF = Remove
R1, R2, R11, R12	AIB Input Select	Populated
R27, R29	HEAD or AD Mode Select	HEAD = Populate R27, Remove R29
		AD = Remove R27, Populate R29
R22, R26	PBTL or BTL Select	Populate
S1	RESET Control	RESET
R25	FREQ_ADJ	MASTER MODE = 480 kHz

2.2.2 Power-Up

Ensure that required connections and configurations have been checked. The TPA3220EVM-Micro board can now be powered on.

1. Enable the power supply at 12 V to 30 V and ensure that LED D2 illuminates. LEDs D1 and D3 should not be illuminated.
2. Switch S1 out of RESET. The FAULT LED (D1) should blink once quickly, then remain unilluminated.
3. Note that the EVM does not have volume control, configure your analog input for a reasonable audio level before beginning audio playback.
4. Enable audio input playback and the EVM should begin driving audio out of the left and right speakers. If resistor loads are used for testing instead of speakers, they will now be energized.

3 Hardware Configuration

3.1 Indicator Overview (CLIP_OTW and FAULT)

The TPA3220EVM-Micro is equipped with LED indicators that illuminate when the FAULT or CLIP_OTW pin goes low. See [Table 3](#) and [TPA3220 100-W Peak HD-Audio, Analog-Input, Class-D](#) for more details.

Table 3. Fault and Clip Overtemperature Status

FAULT LED Status	CLIP_OTW LED Status	Description
ON	ON	Overtemperature (OTE) or overload (OLP) or undervoltage (UVP). Junction temperature higher than 125°C (OTE warning)
ON	OFF	Overload (OLP) or undervoltage (UVP). Junction temperature lower than 125°C
OFF	ON	Junction temperature higher than 125°C (OTE warning)
OFF	OFF	Junction temperature lower than 125°C and no OLP or UVP faults (normal operation)

3.2 PWM Frequency Adjust

The TPA3220EVM-Micro allows for three oscillator frequency options by external configuration of the `FREQ_ADJ` pin. The frequency adjust can be used to reduce interference problems while using a radio receiver tuned within the AM band. These values should be chosen such that the nominal and the lower value switching frequencies together results in the fewest cases of interference throughout the AM band. The oscillator frequency can be selected by the value of the `FREQ_ADJ` resistor connected to GND in master mode according to [Table 4](#).

Table 4. Frequency Adjust Master Mode Selection

FREQ_ADJ (R25, R)	Resistor Value	PWM Frequency
Master MODE	49.9 kΩ	600 kHz
Master MODE	30 kΩ	533 kHz
Master MODE	10 kΩ	480 kHz
Slave MODE	Pull up to 5 V	N/A

Selecting *Slave Mode* configures the `OSC_I/O` pins as inputs to be slaved from an external differential clock. In a master or slave system, interchannel delay is automatically set up between the switching phases of the audio channels, which can be illustrated by no idle channels switching at the same time. This will not influence the audio output, but only the switch timing to minimize noise coupling between audio channels through the power supply. This will optimize audio performance and result in better operating conditions for the power supply. The inter-channel delay will be set up for a slave device depending on the polarity of the `OSC_I/O` connection such that slave mode 1 is selected by connecting the `OSC_I/O` of the master device with the `OSC_I/O` of the slave device with the same polarity (+ to + and – to –), while slave mode 2 is selected by connecting the `OSC_I/O`s with the inverse polarity (+ to – and – to +).

3.3 Modulation Modes (AD Mode and HEAD Mode)

The TPA3220EVM-Micro supports both AD modulation as well as HEAD modulation. In AD mode, each of the two half-bridge outputs are continuously switching. AD mode is the default mode for the TPA3220EVM-Micro. The EVM also supports HEAD mode modulation. HEAD mode also switches both half-bridge outputs but also optimizes the switching for lower power loss at idle as well as increased EMI performance at cost of some performance. The device accomplishes this by reducing its duty cycle at idle and while playing small signals. At higher output levels HEAD mode will also reduce the switching on one of the half bridges. The modulation mode can be controlled through jumper J6 on the EVM as follows:

Table 5. HEAD and AD Mode Selection

Resistors State (R27, R29)	Modulation Mode
R27 = Populate, R29 = Remove	HEAD Mode
R27 = Remove, R29 = Populate	AD Mode

More information on the differences between HEAD mode and AD mode as well as performance data is found in [TPA3220 100-W Peak HD-Audio, Analog-Input, Class-D](#).

3.4 Output Mode Selection

The TPA3220 does not use discrete mode pins and therefore relies solely on the states of the IN2_M and IN2_P pins. Connecting the IN2_M and IN2_P pins to regular high output impedance audio outputs by removing J7 and J8 puts the TPA3220 into BTL mode (2 × stereo outputs). Tying the IN2_M and IN2_P pins to GND by populating R22 and R26 puts the TPA3220 into PBTL mode (1 × mono output). This is summarized in [Table 6](#):

Table 6. Output Mode and Modulation Mode Selection

Input Resistors R22 and R26		Input Mode	Output Configuration	Description
IN2_M	IN2_P			
OUT	OUT	1N / 2N + 1	2 × BTL	Stereo BTL output configuration
IN	IN		1 × PBTL	Mono paralleled BTL configuration. Connect OUT1+ to OUT2+ and OUT1– to OUT2–.

3.5 EVM Power Tree

The TPA3220EVM-Micro includes a few options for power configuration so that various input types can be evaluated.

3.5.1 TPA3220 Supplies

The TPA3220 device has a few power supplies which each have their own voltage range and rules. Details for each supply are as shown:

- **PVDD** – This is the main device supply which accepts from 7 V to 30 V. Power output of the device is derived solely from PVDD and therefore it is important to configure this supply according to the chosen output configuration and load. Complete details are included in [TPA3220 100-W Peak HD-Audio, Analog-Input, Class-D](#).
- **VDD** – This supply is used for the non-PVDD power of the device for blocks such as the front-end and control circuitry. The TPA3220 internal 5-V LDO is also powered by this pin. VDD can be powered by 5 V directly if using the TPA3220 with the internal regulator OFF. In this case, tie the GVDD and AVDD pins directly to VDD through R18 and remove R16. When the internal regulator is used, VDD must be between 7 V and PVDD through R16. GVDD and AVDD are only 5-V tolerant, so R18 must be removed.
- **GVDD** and **AVDD** – These pins are used for the gate drive and analog supply of the device. These pins accept only 5 V. When the internal regulator is used, these pins are fed internal to the device, no external connection is necessary. When the internal regulator is OFF.

3.5.2 TPA3220EVM-Micro Power Options

3.5.2.1 Default Mode

This is the default configuration of TPA3220EVM-Micro. In this configuration, the TPA3220 utilizes the onboard buck converter to bring down PVDD to 5 V.

[Table 7](#) shows how to configure TPA3220EVM-Micro into this mode.

Table 7. Default Mode Configuration

Component	Component Description	Configuration for LDO Mode
R16	PVDD to VDD Connector	Populate
R18	5 V to VDD Connector	Remove
R14	5 V to GVDD Connector	Populate
D4	Buck Input Component	Populate
L4, C31, R38	Buck Output Components	Populate
R40	Voltage Divider for RESET	Remove

3.5.2.2 PVDD Only (12 V to 30 V) LDO Mode

This power mode is the default setup when the board is tested and shipped. The user can connect any valid supply voltage to J1 and the onboard LDOs will generate the required non-PVDD voltages. PVDD itself always connects directly to the TPA3220 PVDD pins. Setup for this mode is the same as described in [Quick Start \(BTL MODE\)](#).

[Table 8](#) shows how to configure the TPA3220EVM-Micro into this mode.

Table 8. LDO Mode Configuration

Component	Component Description	Configuration for LDO Mode
R16	PVDD to VDD Connector	Populate
R18	5 V to VDD Connector	Remove
R14	5 V to GVDD Connector	Populate
D4	Buck Input Component	Remove
L4, C31, R38	Buck Output Components	Remove
R40	Voltage Divider for RESET	Remove

3.5.2.3 PVDD (12 V to 30 V) and One Non-5-V Supply

This power mode is useful for certain applications where a system has one higher voltage used for PVDD and a second lower voltage that may be used for device pullups and other supplies (VDD, GVDD, and AVDD).

Special consideration must be taken for the RESET pin. The RESET pin needs to have a 5-V input. In order to do this R40 must be installed to create a voltage divider network that will drop the voltage down to 5 V.

Table 9 shows how to configure TPA3220EVM-Micro into this mode.

Table 9. Non-5-V Supply Configuration

Component	Component Description	Configuration for External Non-5-V Mode
R16	PVDD to VDD Connector	Populate
R18	5 V to VDD Connector	Remove
R14	5 V to GVDD Connector	Remove
D4	Buck Input Component	Remove
L4, C31, R38	Buck Output Components	Remove
R40	Voltage Divider for RESET	Populate

3.5.2.4 PVDD (12 V to 30 V) and External 5-V Supply

This power mode is most useful for systems in which a 5-V supply is already available due to additional circuitry like an MCU or wireless module. On the EVM, this is also the preferred way to measure efficiency of the TPA3220 device.

Table 10 shows how to configure TPA3220EVM-Micro into this mode.

Table 10. External 5-V Supply Mode Configuration

Component	Component Description	Configuration for External 5-V Mode
R16	PVDD to VDD Connector	Remove
R18	5 V to VDD Connector	Populate
R14	5 V to GVDD Connector	Populate
D4	Buck Input Component	Remove
L4, C31, R38	Buck Output Components	Remove
R40	Voltage Divider for RESET	Remove

3.6 LC Response and Overview

Included near the output of the TPA3220 device are four output LC filters. These output filters filter the pulse-width modulation (PWM) output, leaving only the audio content at high power, which is fed to the speakers. The board uses a CoilCraft™ 7-μH inductor and a 0.68-μF film capacitor to form this LC filter. Using the equations listed in [LC Filter Design](#), the low-pass filter cutoff is calculated as follows in

Equation 1:

$$F_{cut-off} = \frac{1}{2\pi\sqrt{L \times C}} = \frac{1}{2\pi\sqrt{7 \mu H \times .68 \mu F}} = 72.9 \text{ kHz} \quad (1)$$

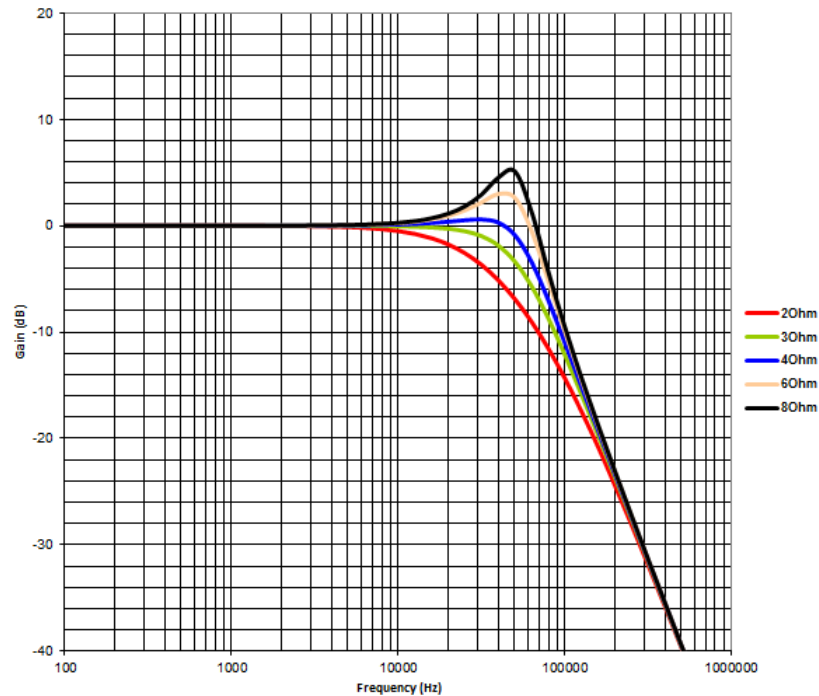


Figure 5. Filter Frequency Response

3.7 Reset Circuit and POR

The TPA3220EVM-Micro includes RESET supervision so that the TPA3220 device will remain in reset until all power rails are up and stable. The RESET supervisor also ensures that the device will be put into reset if one of the power rails experiences a brown out. This circuit, combined with the RESET switch (S1) help ensure that the TPA3220 can be placed in reset easily, as needed, or automatically if there is a power supply issue.

3.8 Analog-Input-Board Connector (J3)

The Analog-Input-Board (AIB) connector allows for cross compatibility with several Analog Plug-in Modules (APMs) offered by TI. This generic connector provides access to common board connections such as analog input, analog output, Fault and overtemperature warning (OTW) error reporting, common board voltages (12 V, 3.3 V, and so forth), and EVM reset. These plug-in modules allow for an application-specific front end to be plugged into the TPA3220EVM-Micro with ease. Examples of plug-in modules include front ends for guitar amplifier, karaoke, wireless sub-woofer, and front-end audio crossover.

[Table 11](#) provides the details for the AIB connector pinouts.

Table 11. AIB Connector (J3) Pinout

Pin #	Function	Description	Audio EVM Input/Output
1	Amp Out A	Speaker-level output from audio class-D EVM (SE or one side of BTL)	O
2	Amp Out B	Speaker-level output from audio class-D EVM (SE or one side of BTL)	O
3	PVDD	PVDD voltage supply from audio Class-D EVM (variable voltage depending on Class-D EVM use)	O
4	GND	Ground reference between audio plug-in module and audio class-D EVM	-
5	NC	-	-
6	NC	-	-
7	3.3 V	3.3-V supply from EVM; used for powering Audio Plug-in Module	O
8	3.3 V	3.3-V supply from EVM; used for powering Audio Plug-in Module	O
9	12 V	12-V supply from EVM; used for powering Audio Plug-in Module	O
10	EN and RESET	Assert enable and reset control for audio class-D EVM (active low)	I
11	Analog IN_A	Analog audio Input A (analog in EVM), Data In I2S Bus (digital in EVM)	I
12	NC	-	-
13	Analog IN_B	Analog audio Input B (analog in EVM), Data In I2S Bus (digital in EVM)	I
14	CLIP_OTW	Clipping detection, overtemperature warning, or both from audio class-D EVM (active low)	O
15	Analog IN_C	Analog audio Input C (analog in EVM), Data In I2S Bus (digital in EVM)	I
16	FAULT	Fault detection from audio Class-D EVM (Active Low)	O
17	Analog IN_D	Analog audio Input D (analog in EVM), Data In I2S Bus (digital in EVM)	I
18	NC	-	-
19	NC	-	-
20	NC	-	-
21	GND	Ground reference between audio plug-in module and audio class-D EVM	-
22	GND	Ground reference between audio plug-in module and audio class-D EVM	-
23	NC	-	-
24	NC	-	-
25	NC	-	-
26	NC	-	-
27	Amp Out C	Speaker-level output from audio class-D EVM (SE or one side of BTL)	O
28	Amp Out D	Speaker-level output from audio class-D EVM (SE or one side of BTL)	O

4 EVM Design Documents

This section contains the EVM board layouts, schematics, and bill of materials (BOM).

4.1 TPA3220EVM-Micro Board Layouts

Figure 6 and Figure 7 illustrate the EVM board layouts.

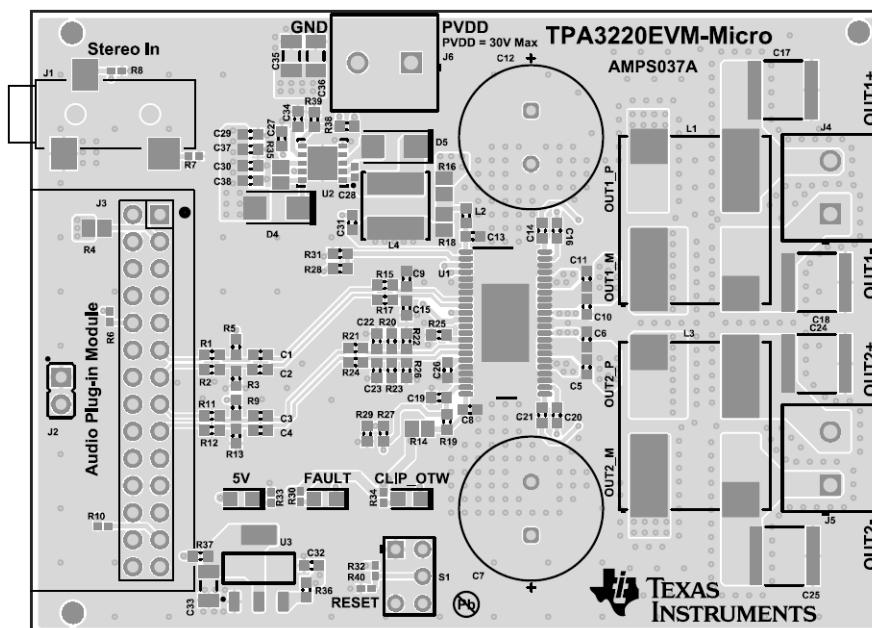


Figure 6. TPA3220EVM-Micro Top Composite Assembly

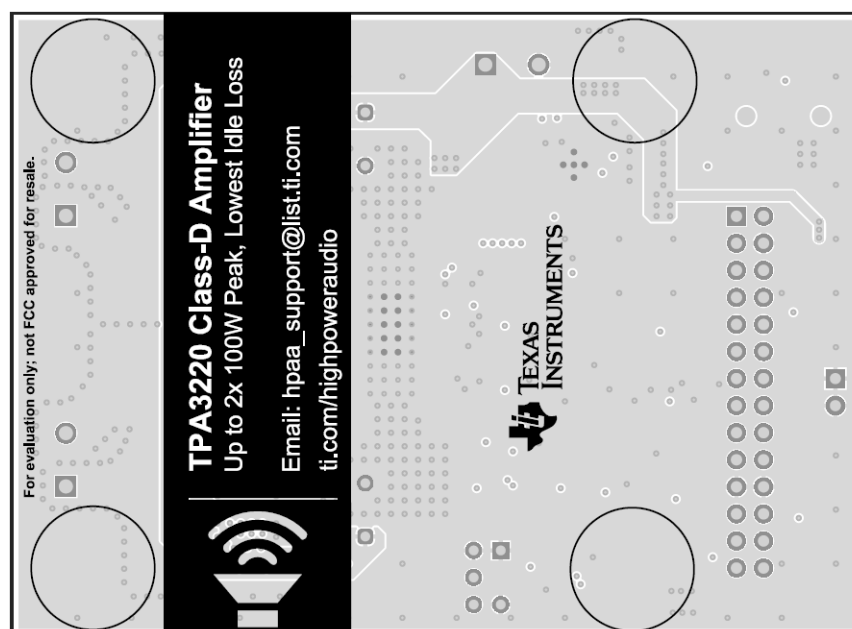


Figure 7. TPA3220EVM-Micro Bottom Composite Assembly

4.2 TPA3220EVM-Micro Board Layouts

Figure 8 shows the EVM board dimensions.



Image shown is **not** actual scale.

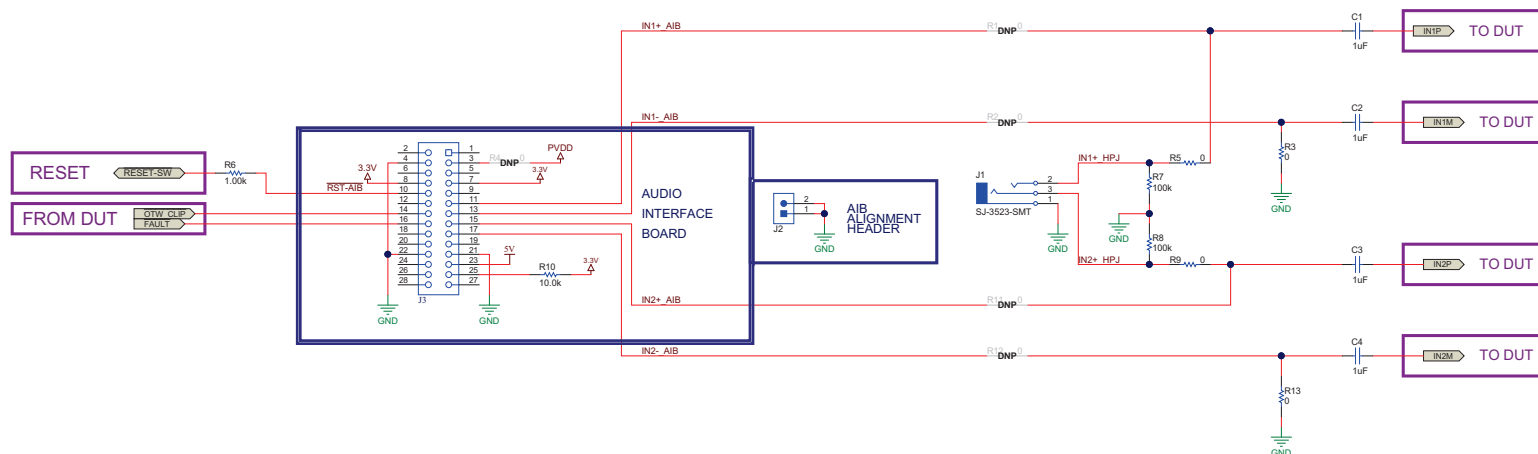
Figure 8. TPA3220EVM-Micro Board Dimensions

5 Schematic and Bill of Materials

This section contains the EVM schematic images and the BOM.

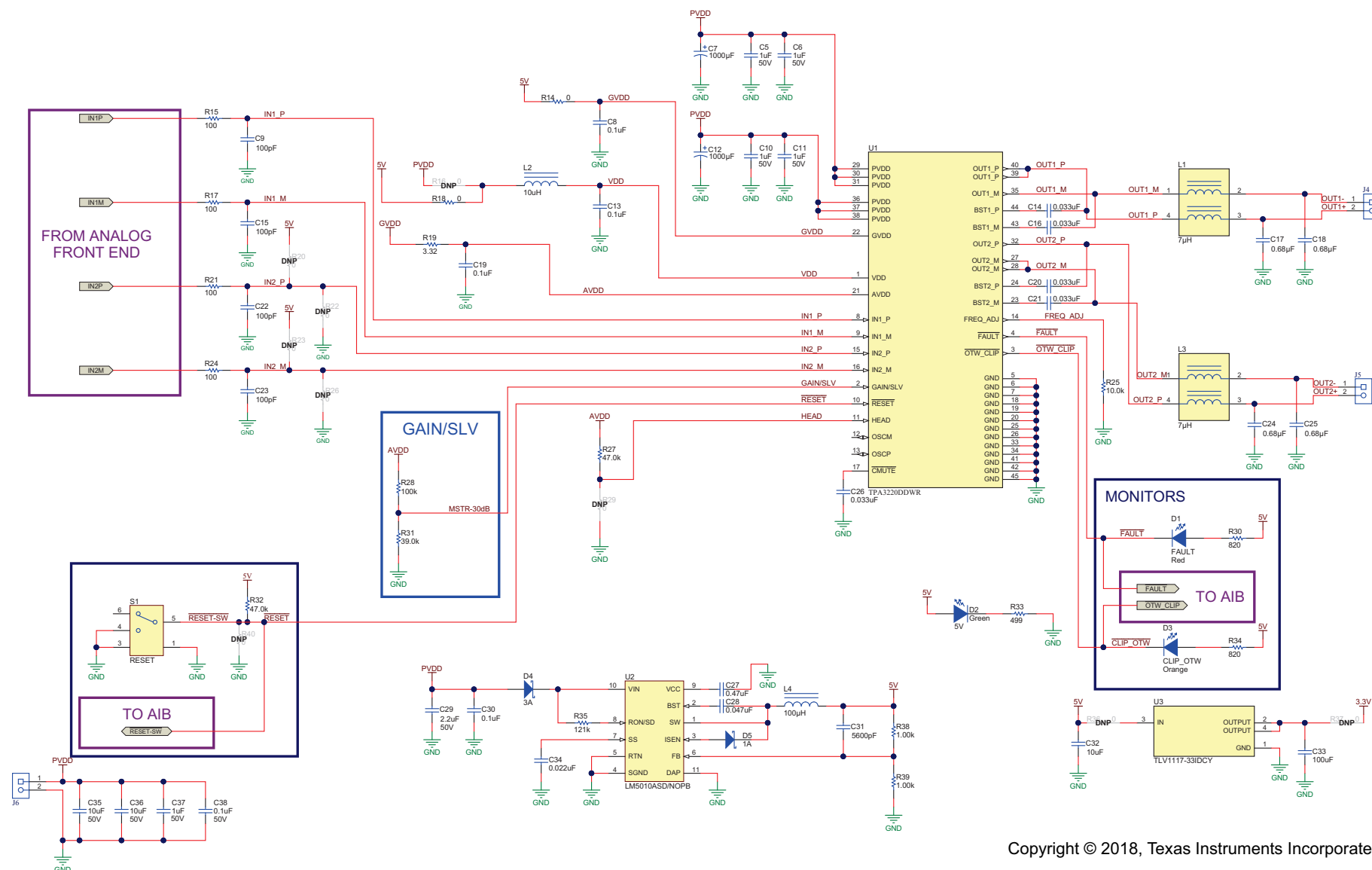
5.1 Schematic

Figure 9 and Figure 10 illustrate the EVM schematics.



Copyright © 2018, Texas Instruments Incorporated

Figure 9. TPA3220EVM-MICRO Schematic 1



Copyright © 2018, Texas Instruments Incorporated

Figure 10. TPA3220EVM-MICRO Schematic 2

5.2 Bill of Materials

Table 12 displays the EVM BOM.

Table 12. Bill of Materials

Designator	Qty	Value	Description	Package Reference	Part Number	Manufacturer
!PCB1	1		Printed Circuit Board		AMPS037	Any
C1, C2, C3, C4	4	1uF	CAP, CERM, 1 uF, 16 V, $\pm 10\%$, X7R, 0603	0603	EMK107B7105KA-T	Taiyo Yuden
C5, C6, C10, C11, C37	5	1uF	CAP, CERM, 1 uF, 50 V, $\pm 10\%$, X7R, 0603	0603	UMK107AB7105KA-T	Taiyo Yuden
C7, C12	2	1000uF	CAP, AL, 1000 μ F, 50 V, $\pm 20\%$, TH	D13xL25mm	860010678024	Wurth Elektronik
C8, C13, C19, C30, C38	5	0.1uF	CAP, CERM, 0.1 uF, 50 V, $\pm 10\%$, X7R, 0603	0603	C0603C104K5RACTU	Kemet
C9, C15, C22, C23	4	100pF	CAP, CERM, 100 pF, 50 V, $\pm 5\%$, C0G/NP0, 0603	0603	GRM1885C1H101JA01D	Murata
C14, C16, C20, C21, C26	5	0.033uF	CAP, CERM, 0.033 uF, 25 V, $\pm 10\%$, X7R, 0603	0603	GRM188R71E333KA01D	Murata
C17, C18, C24, C25	4	0.68uF	CAP, Film, 0.68 μ F, 40 VAC/63 VDC, $\pm 10\%$, AEC-Q200 Grade 1, 2220 SMD	2220	LDEDD3680KA5N00	Kemet
C27	1	0.47uF	CAP, CERM, 0.47 uF, 25 V, $\pm 10\%$, X5R, 0603	0603	GRM188R61E474KA12D	Murata
C28	1	0.047uF	CAP, CERM, 0.047 uF, 25 V, $\pm 10\%$, X7R, 0402	0402	GRM155R71E473KA88D	Murata
C29	1	2.2uF	CAP, CERM, 2.2 uF, 50 V, $\pm 10\%$, X5R, 0603	0603	GRM188R61H225KE11D	Murata
C31	1	5600pF	CAP, CERM, 5600 pF, 50 V, $\pm 10\%$, X7R, 0603	0603	GRM188R71H562KA01D	Murata
C32	1	10uF	CAP, CERM, 10 uF, 16 V, $\pm 20\%$, X5R, 0603	0603	GRM188R61C106MAALD	Murata
C33	1	100uF	CAP, CERM, 100 uF, 6.3 V, $\pm 20\%$, X5R, 1206	1206	GRM31CR60J107ME39L	Murata
C34	1	0.022uF	CAP, CERM, 0.022 uF, 50 V, $\pm 10\%$, X7R, 0603	0603	C0603C223K5RACTU	Kemet
C35, C36	2	10uF	CAP, CERM, 10 uF, 50 V, $\pm 10\%$, X5R, 1206	1206	GRM31CR61H106KA12L	Murata
D1	1	Red	LED, Red, SMD	Red 0805 LED	LTST-C170KRKT	Lite-On
D2	1	Green	LED, Green, SMD	LED_0805	LTST-C171GKT	Lite-On
D3	1	Orange	LED, Orange, SMD	LED_0805	LTST-C170KFKT	Lite-On
D4	1	100V	Diode, Schottky, 100 V, 3 A, SMA	SMA	SK310A-TP	Micro Commercial Components
D5	1	100V	Diode, Schottky, 100 V, 1 A, SMA	SMA	B1100-13-F	Diodes Inc.
H1, H2, H3, H4	4		Bumpon, Hemisphere, 0.44 X 0.20, Clear	Transparent Bumpon	SJ-5303 (CLEAR)	3M
J1	1		Audio Jack, 3.5mm, Stereo, R/A, SMT	Audio Jack SMD	SJ-3523-SMT	CUI Inc.
J2	1		Header, 100mil, 2x1, Gold, TH	Sullins 100mil, 1x2, 230 mil above insulator	PBC02SAAN	Sullins Connector Solutions
J3	1		Receptacle, 100mil, 14x2, Gold, TH	14x2 Receptacle	SSW-114-01-G-D	Samtec
J4, J5, J6	3		Terminal Block, 2x1, 5mm, Green, TH	Terminal Block, 2x1, 5mm, TH	1935776	Phoenix Contact
L1, L3	2	7uH	Inductor, Shielded, Ferrite, 7 μ H, 6.5 A, .0066 ohm, AEC-Q200 Grade 1, SMD	15.5x14mm	UA8013-ALD	Coilcraft
L2	1	10uH	Inductor, Wirewound, 10 uH, 0.08 A, 0.36 ohm, SMD	0603	GLFR1608T100M-LR	TDK
L4	1	100uH	Inductor, Shielded, Ferrite, 100 μ H, 0.9 A, 0.611 ohm, SMD	6x6mm	VLS6045EX-101M	TDK
R3, R5, R9, R13	4	0	RES, 0, 5%, 0.1 W, 0603	0603	ERJ-3GEY0R00V	Panasonic
R6	1	1.00k	RES, 1.00 k, 1%, 0.1 W, 0402	0402	ERJ-2RKF1001X	Panasonic

Table 12. Bill of Materials (continued)

Designator	Qty	Value	Description	Package Reference	Part Number	Manufacturer
R7, R8	2	100k	RES, 100 k, 1%, 0.0625 W, 0402	0402	RC0402FR-07100KL	Yageo America
R10	1	10.0k	RES, 10.0 k, 1%, 0.1 W, 0402	0402	ERJ-2RKF1002X	Panasonic
R14, R18	2	0	RES, 0, 5%, 0.125 W, 0805	0805	ERJ-6GEY0R00V	Panasonic
R15, R17, R21, R24	4	100	RES, 100, 1%, 0.1 W, 0603	0603	RC0603FR-07100RL	Yageo America
R19	1	3.32	RES, 3.32, 1%, 0.1 W, 0603	0603	RC0603FR-073R32L	Yageo America
R25	1	10.0k	RES, 10.0 k, 1%, 0.1 W, 0603	0603	ERJ-3EKF1002V	Panasonic
R27,	1	47.0k	RES, 47.0 k, 1%, 0.1 W, 0603	0603	RC0603FR-0747KL	Yageo America
R28	1	100k	RES, 100 k, 0.5%, 0.1 W, 0603	0603	RT0603DRE07100KL	Yageo America
R30, R34	2	820	RES, 820, 1%, 0.063 W, 0402	0402	RC0402FR-07820RL	Yageo America
R31	1	39.0k	RES, 39.0 k, 1%, 0.1 W, 0603	603	RC0603FR-0739KL	Yageo America
R32	1	47.0k	RES, 47.0 k, 1%, 0.0625 W, 0402	0402	RC0402FR-0747KL	Yageo America
R33	1	499	RES, 499, 0.1%, 0.063 W, AEC-Q200 Grade 0, 0402	0402	ERA-2AEB4990X	Panasonic
R35	1	121k	RES, 121 k, 1%, 0.125 W, 0805	0805	ERJ-6ENF1213V	Panasonic
R38, R39	2	1.00k	RES, 1.00 k, 1%, 0.1 W, 0603	0603	RC0603FR-071KL	Yageo America
S1	1		Switch, SPDT, On-On, 2 Pos, TH	Switch, 7x4.5mm	200USP1T1A1M2RE	E-Switch
U1	1		35-W Stereo, 100-W Peak HD-Audio, Analog-Input, Class-D Amplifier, DDW0044D (TSSOP-44)	DDW0044D	TPA3220DDWR	Texas Instruments
U2	1		High Voltage 1A Step Down Switching Regulator, 10-pin LLP, Pb-Free	SDC10A	LM5010ASD/NOPB	Texas Instruments
U3	1		FIXED LOW-DROPOUT VOLTAGE REGULATOR, DCY0004A	DCY0004A	TLV1117-33IDCY	Texas Instruments
FID1, FID2, FID3	0		Fiducial mark. There is nothing to buy or mount.	N/A	N/A	N/A
R1, R2, R11, R12, R36, R37	0	0	RES, 0, 5%, 0.1 W, 0603	0603	RC0603JR-070RL	Yageo America
R4, R16	0	0	RES, 0, 5%, 0.125 W, 0805	0805	ERJ-6GEY0R00V	Panasonic
R20, R22, R23, R26, R29	0	0	RES, 0, 5%, 0.1 W, 0603	0603	ERJ-3GEY0R00V	Panasonic
R40	0	0	RES, 0, 5%, 0.063 W, 0402	0402	RC0402JR-070RL	Yageo America

STANDARD TERMS FOR EVALUATION MODULES

1. *Delivery:* TI delivers TI evaluation boards, kits, or modules, including any accompanying demonstration software, components, and/or documentation which may be provided together or separately (collectively, an "EVM" or "EVMs") to the User ("User") in accordance with the terms set forth herein. User's acceptance of the EVM is expressly subject to the following terms.
 - 1.1 EVMs are intended solely for product or software developers for use in a research and development setting to facilitate feasibility evaluation, experimentation, or scientific analysis of TI semiconductors products. EVMs have no direct function and are not finished products. EVMs shall not be directly or indirectly assembled as a part or subassembly in any finished product. For clarification, any software or software tools provided with the EVM ("Software") shall not be subject to the terms and conditions set forth herein but rather shall be subject to the applicable terms that accompany such Software
 - 1.2 EVMs are not intended for consumer or household use. EVMs may not be sold, sublicensed, leased, rented, loaned, assigned, or otherwise distributed for commercial purposes by Users, in whole or in part, or used in any finished product or production system.
2. *Limited Warranty and Related Remedies/Disclaimers:*
 - 2.1 These terms do not apply to Software. The warranty, if any, for Software is covered in the applicable Software License Agreement.
 - 2.2 TI warrants that the TI EVM will conform to TI's published specifications for ninety (90) days after the date TI delivers such EVM to User. Notwithstanding the foregoing, TI shall not be liable for a nonconforming EVM if (a) the nonconformity was caused by neglect, misuse or mistreatment by an entity other than TI, including improper installation or testing, or for any EVMs that have been altered or modified in any way by an entity other than TI, (b) the nonconformity resulted from User's design, specifications or instructions for such EVMs or improper system design, or (c) User has not paid on time. Testing and other quality control techniques are used to the extent TI deems necessary. TI does not test all parameters of each EVM. User's claims against TI under this Section 2 are void if User fails to notify TI of any apparent defects in the EVMs within ten (10) business days after delivery, or of any hidden defects with ten (10) business days after the defect has been detected.
 - 2.3 TI's sole liability shall be at its option to repair or replace EVMs that fail to conform to the warranty set forth above, or credit User's account for such EVM. TI's liability under this warranty shall be limited to EVMs that are returned during the warranty period to the address designated by TI and that are determined by TI not to conform to such warranty. If TI elects to repair or replace such EVM, TI shall have a reasonable time to repair such EVM or provide replacements. Repaired EVMs shall be warranted for the remainder of the original warranty period. Replaced EVMs shall be warranted for a new full ninety (90) day warranty period.

WARNING

Evaluation Kits are intended solely for use by technically qualified, professional electronics experts who are familiar with the dangers and application risks associated with handling electrical mechanical components, systems, and subsystems.

User shall operate the Evaluation Kit within TI's recommended guidelines and any applicable legal or environmental requirements as well as reasonable and customary safeguards. Failure to set up and/or operate the Evaluation Kit within TI's recommended guidelines may result in personal injury or death or property damage. Proper set up entails following TI's instructions for electrical ratings of interface circuits such as input, output and electrical loads.

NOTE:

EXPOSURE TO ELECTROSTATIC DISCHARGE (ESD) MAY CAUSE DEGRADATION OR FAILURE OF THE EVALUATION KIT; TI RECOMMENDS STORAGE OF THE EVALUATION KIT IN A PROTECTIVE ESD BAG.

3 Regulatory Notices:

3.1 United States

3.1.1 Notice applicable to EVMs not FCC-Approved:

FCC NOTICE: This kit is designed to allow product developers to evaluate electronic components, circuitry, or software associated with the kit to determine whether to incorporate such items in a finished product and software developers to write software applications for use with the end product. This kit is not a finished product and when assembled may not be resold or otherwise marketed unless all required FCC equipment authorizations are first obtained. Operation is subject to the condition that this product not cause harmful interference to licensed radio stations and that this product accept harmful interference. Unless the assembled kit is designed to operate under part 15, part 18 or part 95 of this chapter, the operator of the kit must operate under the authority of an FCC license holder or must secure an experimental authorization under part 5 of this chapter.

3.1.2 For EVMs annotated as FCC – FEDERAL COMMUNICATIONS COMMISSION Part 15 Compliant:

CAUTION

This device complies with part 15 of the FCC Rules. Operation is subject to the following two conditions: (1) This device may not cause harmful interference, and (2) this device must accept any interference received, including interference that may cause undesired operation.

Changes or modifications not expressly approved by the party responsible for compliance could void the user's authority to operate the equipment.

FCC Interference Statement for Class A EVM devices

NOTE: This equipment has been tested and found to comply with the limits for a Class A digital device, pursuant to part 15 of the FCC Rules. These limits are designed to provide reasonable protection against harmful interference when the equipment is operated in a commercial environment. This equipment generates, uses, and can radiate radio frequency energy and, if not installed and used in accordance with the instruction manual, may cause harmful interference to radio communications. Operation of this equipment in a residential area is likely to cause harmful interference in which case the user will be required to correct the interference at his own expense.

FCC Interference Statement for Class B EVM devices

NOTE: This equipment has been tested and found to comply with the limits for a Class B digital device, pursuant to part 15 of the FCC Rules. These limits are designed to provide reasonable protection against harmful interference in a residential installation. This equipment generates, uses and can radiate radio frequency energy and, if not installed and used in accordance with the instructions, may cause harmful interference to radio communications. However, there is no guarantee that interference will not occur in a particular installation. If this equipment does cause harmful interference to radio or television reception, which can be determined by turning the equipment off and on, the user is encouraged to try to correct the interference by one or more of the following measures:

- *Reorient or relocate the receiving antenna.*
- *Increase the separation between the equipment and receiver.*
- *Connect the equipment into an outlet on a circuit different from that to which the receiver is connected.*
- *Consult the dealer or an experienced radio/TV technician for help.*

3.2 Canada

3.2.1 For EVMs issued with an Industry Canada Certificate of Conformance to RSS-210 or RSS-247

Concerning EVMs Including Radio Transmitters:

This device complies with Industry Canada license-exempt RSSs. Operation is subject to the following two conditions:

(1) this device may not cause interference, and (2) this device must accept any interference, including interference that may cause undesired operation of the device.

Concernant les EVMs avec appareils radio:

Le présent appareil est conforme aux CNR d'Industrie Canada applicables aux appareils radio exempts de licence. L'exploitation est autorisée aux deux conditions suivantes: (1) l'appareil ne doit pas produire de brouillage, et (2) l'utilisateur de l'appareil doit accepter tout brouillage radioélectrique subi, même si le brouillage est susceptible d'en compromettre le fonctionnement.

Concerning EVMs Including Detachable Antennas:

Under Industry Canada regulations, this radio transmitter may only operate using an antenna of a type and maximum (or lesser) gain approved for the transmitter by Industry Canada. To reduce potential radio interference to other users, the antenna type and its gain should be so chosen that the equivalent isotropically radiated power (e.i.r.p.) is not more than that necessary for successful communication. This radio transmitter has been approved by Industry Canada to operate with the antenna types listed in the user guide with the maximum permissible gain and required antenna impedance for each antenna type indicated. Antenna types not included in this list, having a gain greater than the maximum gain indicated for that type, are strictly prohibited for use with this device.

Concernant les EVMs avec antennes détachables

Conformément à la réglementation d'Industrie Canada, le présent émetteur radio peut fonctionner avec une antenne d'un type et d'un gain maximal (ou inférieur) approuvé pour l'émetteur par Industrie Canada. Dans le but de réduire les risques de brouillage radioélectrique à l'intention des autres utilisateurs, il faut choisir le type d'antenne et son gain de sorte que la puissance isotrope rayonnée équivalente (p.i.r.e.) ne dépasse pas l'intensité nécessaire à l'établissement d'une communication satisfaisante. Le présent émetteur radio a été approuvé par Industrie Canada pour fonctionner avec les types d'antenne énumérés dans le manuel d'usage et ayant un gain admissible maximal et l'impédance requise pour chaque type d'antenne. Les types d'antenne non inclus dans cette liste, ou dont le gain est supérieur au gain maximal indiqué, sont strictement interdits pour l'exploitation de l'émetteur.

3.3 Japan

3.3.1 *Notice for EVMs delivered in Japan:* Please see http://www.tij.co.jp/sds/ti_ja/general/eStore/notice_01.page 日本国内に輸入される評価用キット、ボードについては、次のところをご覧ください。

<https://www.ti.com/ja-jp/legal/notice-for-evaluation-kits-delivered-in-japan.html>

3.3.2 *Notice for Users of EVMs Considered "Radio Frequency Products" in Japan:* EVMs entering Japan may not be certified by TI as conforming to Technical Regulations of Radio Law of Japan.

If User uses EVMs in Japan, not certified to Technical Regulations of Radio Law of Japan, User is required to follow the instructions set forth by Radio Law of Japan, which includes, but is not limited to, the instructions below with respect to EVMs (which for the avoidance of doubt are stated strictly for convenience and should be verified by User):

1. Use EVMs in a shielded room or any other test facility as defined in the notification #173 issued by Ministry of Internal Affairs and Communications on March 28, 2006, based on Sub-section 1.1 of Article 6 of the Ministry's Rule for Enforcement of Radio Law of Japan,
2. Use EVMs only after User obtains the license of Test Radio Station as provided in Radio Law of Japan with respect to EVMs, or
3. Use of EVMs only after User obtains the Technical Regulations Conformity Certification as provided in Radio Law of Japan with respect to EVMs. Also, do not transfer EVMs, unless User gives the same notice above to the transferee. Please note that if User does not follow the instructions above, User will be subject to penalties of Radio Law of Japan.

【無線電波を送信する製品の開発キットをお使いになる際の注意事項】 開発キットの中には技術基準適合証明を受けていないものがあります。技術適合証明を受けていないもののご使用に際しては、電波法遵守のため、以下のいずれかの措置を取っていただく必要がありますのでご注意ください。

1. 電波法施行規則第6条第1項第1号に基づく平成18年3月28日総務省告示第173号で定められた電波暗室等の試験設備でご使用いただく。
2. 実験局の免許を取得後ご使用いただく。
3. 技術基準適合証明を取得後ご使用いただく。

なお、本製品は、上記の「ご使用にあたっての注意」を譲渡先、移転先に通知しない限り、譲渡、移転できないものとします。

上記を遵守頂けない場合は、電波法の罰則が適用される可能性があることをご留意ください。 日本テキサス・インスツルメンツ株式会社
東京都新宿区西新宿 6 丁目 2 4 番 1 号
西新宿三井ビル

3.3.3 *Notice for EVMs for Power Line Communication:* Please see http://www.tij.co.jp/sds/ti_ja/general/eStore/notice_02.page

電力線搬送波通信についての開発キットをお使いになる際の注意事項については、次のところをご覧ください。<https://www.ti.com/ja-jp/legal/notice-for-evaluation-kits-for-power-line-communication.html>

3.4 European Union

3.4.1 *For EVMs subject to EU Directive 2014/30/EU (Electromagnetic Compatibility Directive):*

This is a class A product intended for use in environments other than domestic environments that are connected to a low-voltage power-supply network that supplies buildings used for domestic purposes. In a domestic environment this product may cause radio interference in which case the user may be required to take adequate measures.

4 *EVM Use Restrictions and Warnings:*

4.1 EVMS ARE NOT FOR USE IN FUNCTIONAL SAFETY AND/OR SAFETY CRITICAL EVALUATIONS, INCLUDING BUT NOT LIMITED TO EVALUATIONS OF LIFE SUPPORT APPLICATIONS.

4.2 User must read and apply the user guide and other available documentation provided by TI regarding the EVM prior to handling or using the EVM, including without limitation any warning or restriction notices. The notices contain important safety information related to, for example, temperatures and voltages.

4.3 *Safety-Related Warnings and Restrictions:*

4.3.1 User shall operate the EVM within TI's recommended specifications and environmental considerations stated in the user guide, other available documentation provided by TI, and any other applicable requirements and employ reasonable and customary safeguards. Exceeding the specified performance ratings and specifications (including but not limited to input and output voltage, current, power, and environmental ranges) for the EVM may cause personal injury or death, or property damage. If there are questions concerning performance ratings and specifications, User should contact a TI field representative prior to connecting interface electronics including input power and intended loads. Any loads applied outside of the specified output range may also result in unintended and/or inaccurate operation and/or possible permanent damage to the EVM and/or interface electronics. Please consult the EVM user guide prior to connecting any load to the EVM output. If there is uncertainty as to the load specification, please contact a TI field representative. During normal operation, even with the inputs and outputs kept within the specified allowable ranges, some circuit components may have elevated case temperatures. These components include but are not limited to linear regulators, switching transistors, pass transistors, current sense resistors, and heat sinks, which can be identified using the information in the associated documentation. When working with the EVM, please be aware that the EVM may become very warm.

4.3.2 EVMs are intended solely for use by technically qualified, professional electronics experts who are familiar with the dangers and application risks associated with handling electrical mechanical components, systems, and subsystems. User assumes all responsibility and liability for proper and safe handling and use of the EVM by User or its employees, affiliates, contractors or designees. User assumes all responsibility and liability to ensure that any interfaces (electronic and/or mechanical) between the EVM and any human body are designed with suitable isolation and means to safely limit accessible leakage currents to minimize the risk of electrical shock hazard. User assumes all responsibility and liability for any improper or unsafe handling or use of the EVM by User or its employees, affiliates, contractors or designees.

4.4 User assumes all responsibility and liability to determine whether the EVM is subject to any applicable international, federal, state, or local laws and regulations related to User's handling and use of the EVM and, if applicable, User assumes all responsibility and liability for compliance in all respects with such laws and regulations. User assumes all responsibility and liability for proper disposal and recycling of the EVM consistent with all applicable international, federal, state, and local requirements.

5. *Accuracy of Information:* To the extent TI provides information on the availability and function of EVMs, TI attempts to be as accurate as possible. However, TI does not warrant the accuracy of EVM descriptions, EVM availability or other information on its websites as accurate, complete, reliable, current, or error-free.

6. *Disclaimers:*

6.1 EXCEPT AS SET FORTH ABOVE, EVMS AND ANY MATERIALS PROVIDED WITH THE EVM (INCLUDING, BUT NOT LIMITED TO, REFERENCE DESIGNS AND THE DESIGN OF THE EVM ITSELF) ARE PROVIDED "AS IS" AND "WITH ALL FAULTS." TI DISCLAIMS ALL OTHER WARRANTIES, EXPRESS OR IMPLIED, REGARDING SUCH ITEMS, INCLUDING BUT NOT LIMITED TO ANY EPIDEMIC FAILURE WARRANTY OR IMPLIED WARRANTIES OF MERCHANTABILITY OR FITNESS FOR A PARTICULAR PURPOSE OR NON-INFRINGEMENT OF ANY THIRD PARTY PATENTS, COPYRIGHTS, TRADE SECRETS OR OTHER INTELLECTUAL PROPERTY RIGHTS.

6.2 EXCEPT FOR THE LIMITED RIGHT TO USE THE EVM SET FORTH HEREIN, NOTHING IN THESE TERMS SHALL BE CONSTRUED AS GRANTING OR CONFERRING ANY RIGHTS BY LICENSE, PATENT, OR ANY OTHER INDUSTRIAL OR INTELLECTUAL PROPERTY RIGHT OF TI, ITS SUPPLIERS/LICENSORS OR ANY OTHER THIRD PARTY, TO USE THE EVM IN ANY FINISHED END-USER OR READY-TO-USE FINAL PRODUCT, OR FOR ANY INVENTION, DISCOVERY OR IMPROVEMENT, REGARDLESS OF WHEN MADE, CONCEIVED OR ACQUIRED.

7. *USER'S INDEMNITY OBLIGATIONS AND REPRESENTATIONS.* USER WILL DEFEND, INDEMNIFY AND HOLD TI, ITS LICENSORS AND THEIR REPRESENTATIVES HARMLESS FROM AND AGAINST ANY AND ALL CLAIMS, DAMAGES, LOSSES, EXPENSES, COSTS AND LIABILITIES (COLLECTIVELY, "CLAIMS") ARISING OUT OF OR IN CONNECTION WITH ANY HANDLING OR USE OF THE EVM THAT IS NOT IN ACCORDANCE WITH THESE TERMS. THIS OBLIGATION SHALL APPLY WHETHER CLAIMS ARISE UNDER STATUTE, REGULATION, OR THE LAW OF TORT, CONTRACT OR ANY OTHER LEGAL THEORY, AND EVEN IF THE EVM FAILS TO PERFORM AS DESCRIBED OR EXPECTED.

8. *Limitations on Damages and Liability:*

8.1 *General Limitations.* IN NO EVENT SHALL TI BE LIABLE FOR ANY SPECIAL, COLLATERAL, INDIRECT, PUNITIVE, INCIDENTAL, CONSEQUENTIAL, OR EXEMPLARY DAMAGES IN CONNECTION WITH OR ARISING OUT OF THESE TERMS OR THE USE OF THE EVMS , REGARDLESS OF WHETHER TI HAS BEEN ADVISED OF THE POSSIBILITY OF SUCH DAMAGES. EXCLUDED DAMAGES INCLUDE, BUT ARE NOT LIMITED TO, COST OF REMOVAL OR REINSTALLATION, ANCILLARY COSTS TO THE PROCUREMENT OF SUBSTITUTE GOODS OR SERVICES, RETESTING, OUTSIDE COMPUTER TIME, LABOR COSTS, LOSS OF GOODWILL, LOSS OF PROFITS, LOSS OF SAVINGS, LOSS OF USE, LOSS OF DATA, OR BUSINESS INTERRUPTION. NO CLAIM, SUIT OR ACTION SHALL BE BROUGHT AGAINST TI MORE THAN TWELVE (12) MONTHS AFTER THE EVENT THAT GAVE RISE TO THE CAUSE OF ACTION HAS OCCURRED.

8.2 *Specific Limitations.* IN NO EVENT SHALL TI'S AGGREGATE LIABILITY FROM ANY USE OF AN EVM PROVIDED HEREUNDER, INCLUDING FROM ANY WARRANTY, INDEMNITY OR OTHER OBLIGATION ARISING OUT OF OR IN CONNECTION WITH THESE TERMS, , EXCEED THE TOTAL AMOUNT PAID TO TI BY USER FOR THE PARTICULAR EVM(S) AT ISSUE DURING THE PRIOR TWELVE (12) MONTHS WITH RESPECT TO WHICH LOSSES OR DAMAGES ARE CLAIMED. THE EXISTENCE OF MORE THAN ONE CLAIM SHALL NOT ENLARGE OR EXTEND THIS LIMIT.

9. *Return Policy.* Except as otherwise provided, TI does not offer any refunds, returns, or exchanges. Furthermore, no return of EVM(s) will be accepted if the package has been opened and no return of the EVM(s) will be accepted if they are damaged or otherwise not in a resalable condition. If User feels it has been incorrectly charged for the EVM(s) it ordered or that delivery violates the applicable order, User should contact TI. All refunds will be made in full within thirty (30) working days from the return of the components(s), excluding any postage or packaging costs.
10. *Governing Law:* These terms and conditions shall be governed by and interpreted in accordance with the laws of the State of Texas, without reference to conflict-of-laws principles. User agrees that non-exclusive jurisdiction for any dispute arising out of or relating to these terms and conditions lies within courts located in the State of Texas and consents to venue in Dallas County, Texas. Notwithstanding the foregoing, any judgment may be enforced in any United States or foreign court, and TI may seek injunctive relief in any United States or foreign court.

Mailing Address: Texas Instruments, Post Office Box 655303, Dallas, Texas 75265
Copyright © 2023, Texas Instruments Incorporated

IMPORTANT NOTICE AND DISCLAIMER

TI PROVIDES TECHNICAL AND RELIABILITY DATA (INCLUDING DATASHEETS), DESIGN RESOURCES (INCLUDING REFERENCE DESIGNS), APPLICATION OR OTHER DESIGN ADVICE, WEB TOOLS, SAFETY INFORMATION, AND OTHER RESOURCES "AS IS" AND WITH ALL FAULTS, AND DISCLAIMS ALL WARRANTIES, EXPRESS AND IMPLIED, INCLUDING WITHOUT LIMITATION ANY IMPLIED WARRANTIES OF MERCHANTABILITY, FITNESS FOR A PARTICULAR PURPOSE OR NON-INFRINGEMENT OF THIRD PARTY INTELLECTUAL PROPERTY RIGHTS.

These resources are intended for skilled developers designing with TI products. You are solely responsible for (1) selecting the appropriate TI products for your application, (2) designing, validating and testing your application, and (3) ensuring your application meets applicable standards, and any other safety, security, regulatory or other requirements.

These resources are subject to change without notice. TI grants you permission to use these resources only for development of an application that uses the TI products described in the resource. Other reproduction and display of these resources is prohibited. No license is granted to any other TI intellectual property right or to any third party intellectual property right. TI disclaims responsibility for, and you fully indemnify TI and its representatives against any claims, damages, costs, losses, and liabilities arising out of your use of these resources.

TI's products are provided subject to [TI's Terms of Sale](#), [TI's General Quality Guidelines](#), or other applicable terms available either on [ti.com](#) or provided in conjunction with such TI products. TI's provision of these resources does not expand or otherwise alter TI's applicable warranties or warranty disclaimers for TI products. Unless TI explicitly designates a product as custom or customer-specified, TI products are standard, catalog, general purpose devices.

TI objects to and rejects any additional or different terms you may propose.

Copyright © 2026, Texas Instruments Incorporated

Last updated 10/2025