

## **DAC31x4 EVM User's Guide**

This document is intended to serve as a basic user's guide for the DAC31x4 EVM Revision A. The EVM provides a basic platform to evaluate the DAC31x4, which is a 500 MSPS high-speed digital-to-analog converter. The DAC3174 is a dual-channel DAC with 14-bit LVDS input. DAC3174 is pin compatible with the dual-channel, 12-/10-bit, 500 MSPS digital-to-analog converter, DAC3164 and DAC3154. The DAC3174 EVM GUI can be used for DAC31x4 EVM.

### **Contents**

1	Introduction .....	2
	1.1 Overview .....	2
	1.2 EVM Block Diagram .....	2
2	Software Control .....	3
	2.1 Installation Instructions .....	3
	2.2 Software Operation .....	3
3	Basic Test Procedure with TSW1400 .....	7
	3.1 Test Block Diagram .....	7
	3.2 Test Set-up Connection .....	7
	3.3 TSW1400 Quick Start Operation .....	8
	3.4 DAC31x4 Software Quick-Start Guide .....	9
	3.5 DAC3174 Output Performance for WCDMA and LTE .....	10

### **List of Figures**

1	EVM Block Diagram .....	2
2	Input Control Options .....	3
3	Digital Filtering Options .....	4
4	Output Control Options .....	4
5	CDCE62005 Tab Configured for DAC3174 .....	5
6	Test Setup Block Diagram .....	7
7	TSW1400 Two-Tone Programming GUI .....	8
8	Captured Two-Tone from Spectrum Analyzer .....	9
9	DAC3174 and TRF3705 LTE, 10-MHz Output (Baseband = 0 MHz, LO = 885 MHz) .....	10
10	DAC3174 and TRF3705 WCDMA, 5-MHz Output (Baseband = 30 MHz, LO = 885 MHz) .....	11

# 1 Introduction

## 1.1 Overview

The EVM includes the CDCE62005 clocking source which provides the clocks required for the DAC and the pattern generator. The on-board TRF3705-15 modulator provides on-board IF-to-RF up-conversion for basic transmitter evaluation. This EVM is ideally suited for mating with the TSW1400 pattern generation card for evaluating WCDMA, LTE, or other high-performance modulation schemes.

## 1.2 EVM Block Diagram

Figure 1 shows the configuration of the EVM with the TSW1400 used for pattern generation.

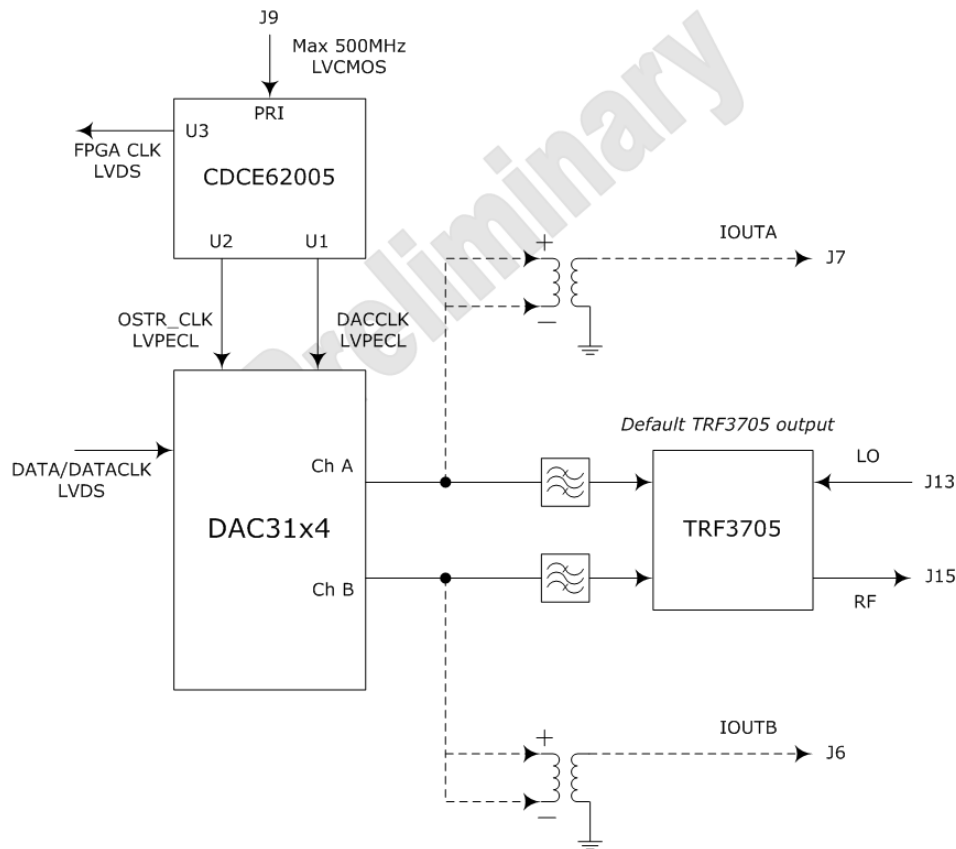


Figure 1. EVM Block Diagram

## 2 Software Control

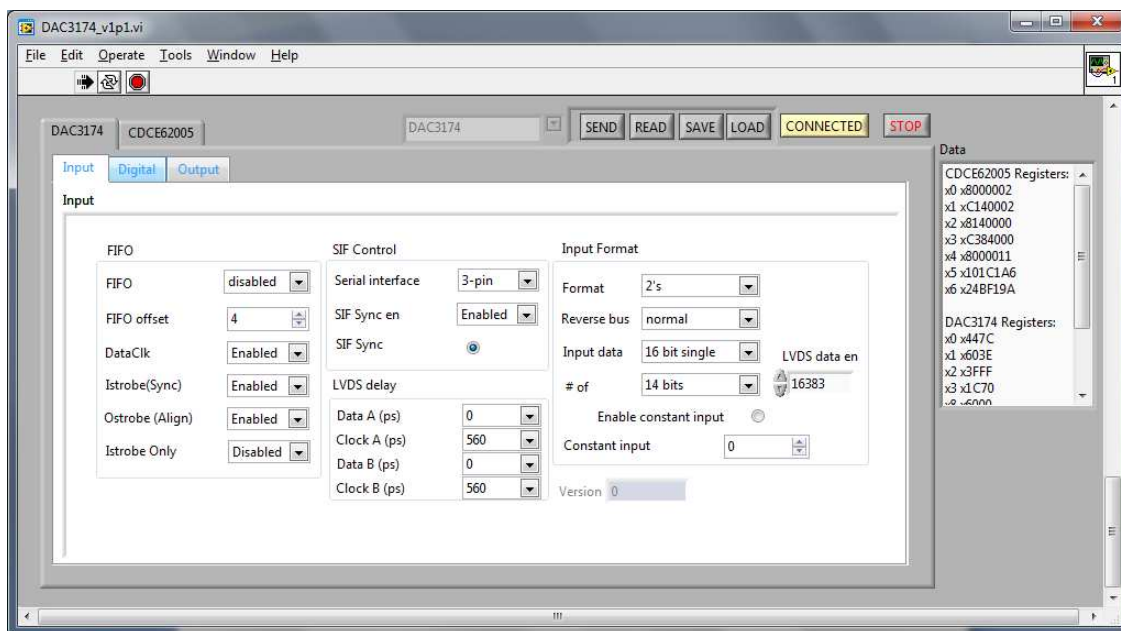
### 2.1 Installation Instructions

- Open the folder named DAC3174\_Installer\_vxpx (xpx represents the latest version)
- Run Setup.exe
- Follow the on-screen instructions
- Once installed, launch by clicking on the DAC3174\_GUI\_vxpx program in Start → Texas Instruments DACs
- When plugging in the USB cable for the first time, you are prompted to install the USB drivers.
  - When a pop-up screen opens, select *Continue Downloading*
  - Follow the on-screen instructions to install the USB drivers
  - If needed, you can access the drivers directly in the install directory, C:\Program Files (x86)\Texas Instruments\DAC3174 for Windows® 7 and C:\Program Files\Texas Instruments\DAC3174 for Windows XP.

### 2.2 Software Operation

The software allows programming control of the DAC and CDCE devices. The front panel provides a tab for full programming of each. The GUI tabs provide a more convenient and simplified interface to the most-used registers of each device.

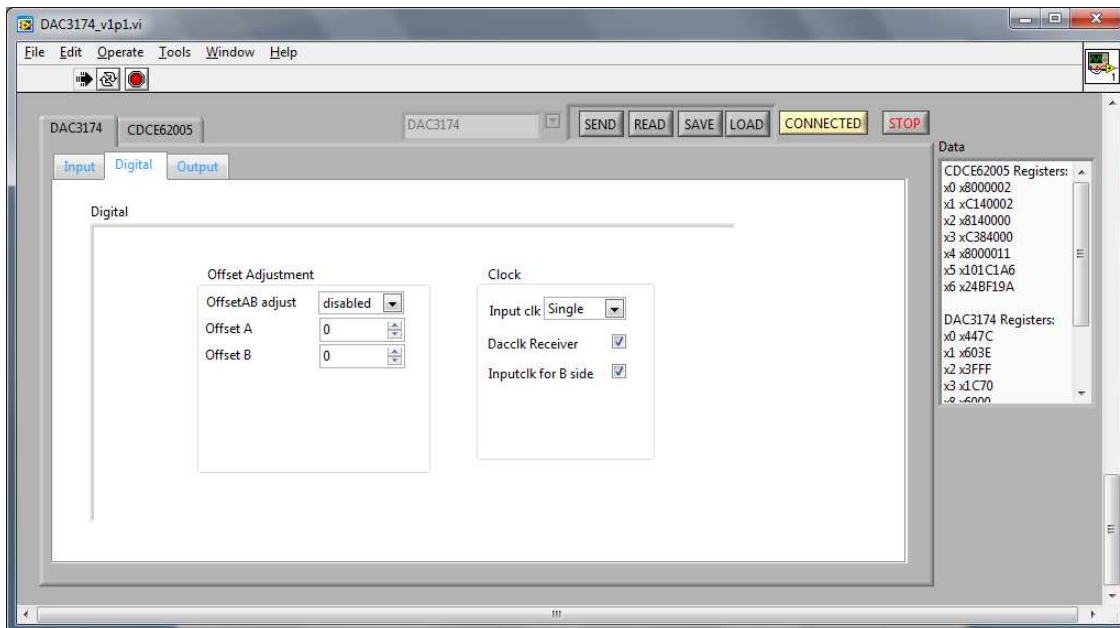
#### 2.2.1 Input Control Options



**Figure 2. Input Control Options**

- FIFO: allows the configuration of the FIFO and FIFO synchronization (sync) sources.
- LVDS delay: provides internal delay of either the LVDS data or LVDS data clock to help meet the input setup and hold time.
- SIF Control: provides control of the Serial Interface (3-wires or 4-wires) and Serial Interface Sync (*SIF Sync*).
- Input Format: provides control of the input data format (that is, 2s complement or offset binary).

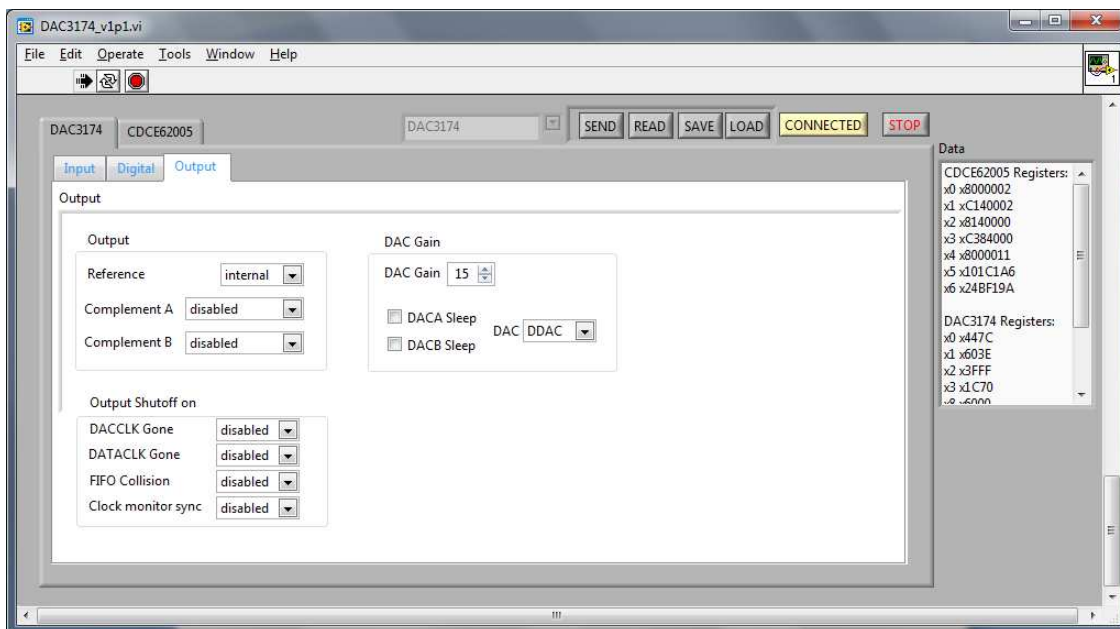
### 2.2.2 Digital Block Options



**Figure 3. Digital Filtering Options**

- Clock Receiver Sleep: allows the DAC clock receiver to be in sleep mode. The DAC has minimum power consumption in this mode.
- Offset Adjustment: allows adjustment of DC offset to minimize the LO feed-through of the modulator output. Writing the register for Offset B causes an autosync generation in the QMOFFSET block.

### 2.2.3 Output Control Options



**Figure 4. Output Control Options**

- Output: allows the configuration of reference, output polarity, and output delay
- DAC Gain: configures the full-scale DAC current and DAC3174 mode

- DAC Gain = 15 for 20-mA full-scale current
- DAC3174 = DDAC
- Output Shutoff On: allows outputs to shut-off when alarm event occurs

### 2.2.4 CDCE62005

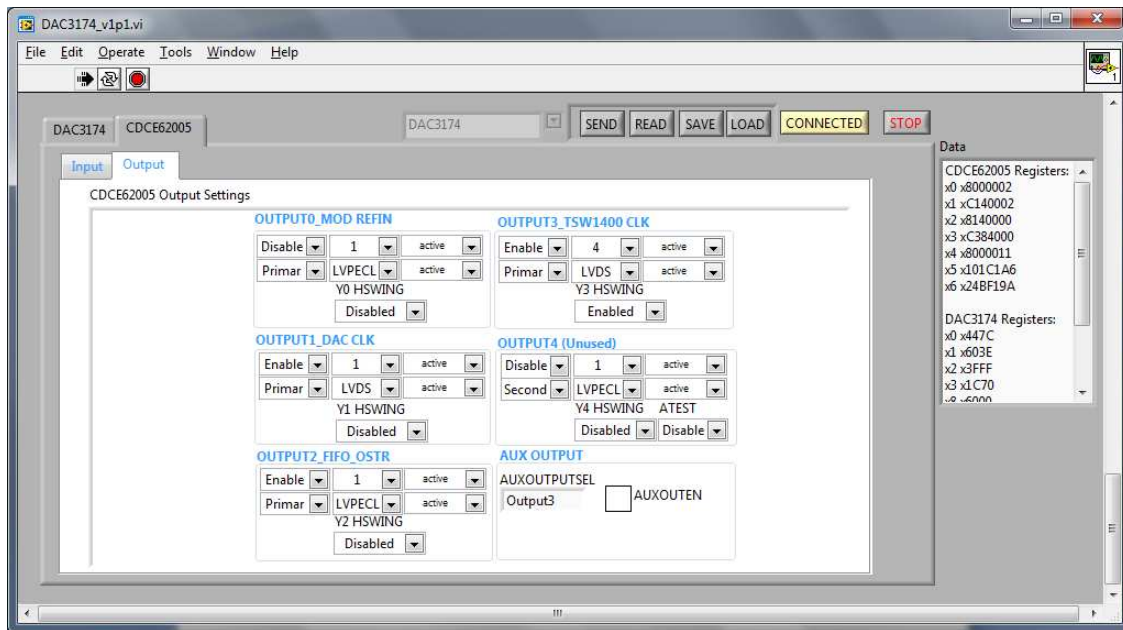


Figure 5. CDCE62005 Tab Configured for DAC3174

Clock frequency control is determined by register values in the CDC tab. Please refer to the CDCE62005 datasheet for detailed explanations of the register configuration to change the clock frequency.

The following CDCE62005 outputs are critical to proper operation of the DAC3174:

- OUTPUT1\_DAC\_CLK: DAC3174 Sampling clock
- OUTPUT3\_TSW1400\_CLK: TSW1400 FPGA clock

Configure the CDCE62005 registers with the following steps:

1. Open the DAC3174 GUI
2. Click the **Load Regs** button
3. Open the *dac3174\_reg.txt* file.

This automatically configures the CDCE62005 registers.

### 2.2.5 Register Control

- Send All: Sends the register configuration to all devices
- Read All: Reads register configuration from the DAC3174 device
- Load Regs: Load a register file for all devices. Sample configuration files for common frequency plans are located in the install directory.
  - Select *Load Regs* button
  - Double click the *data* folder
  - Double click the desired register file
  - Clicking *Send All* ensures all the values are loaded properly
- Save Regs: Saves the register configuration for all devices

### 2.2.6 Miscellaneous Settings

- Reset USB: Toggle this button if the USB port is not responding. This generates a new USB handle address.

---

**NOTE:** It is recommended to reset the board and select the **Reset USB** button after every power cycle.

---

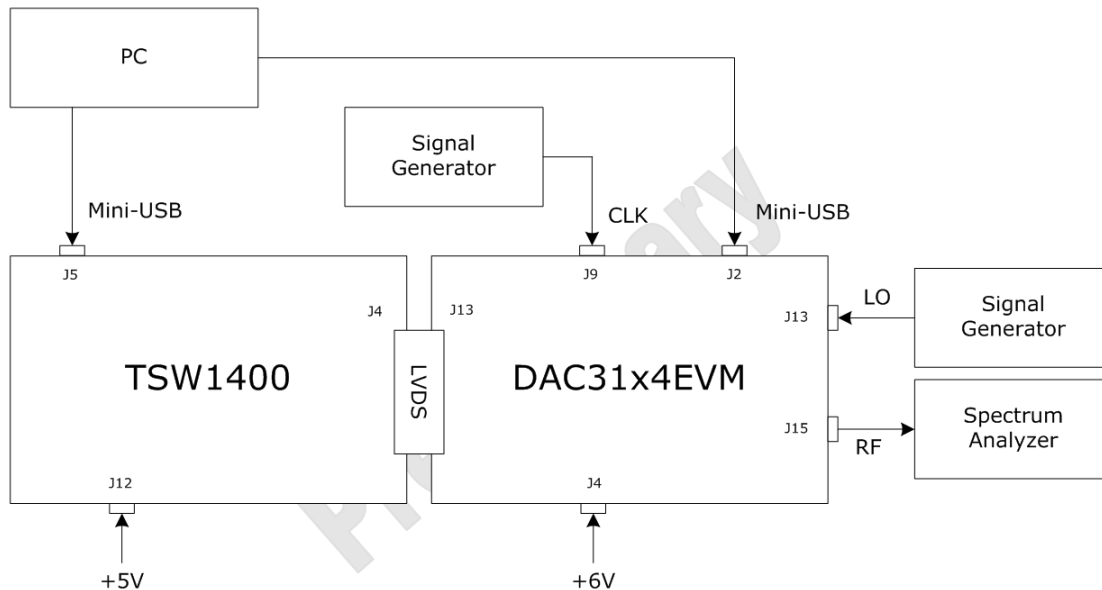
- Exit: Stops the program

### 3 Basic Test Procedure with TSW1400

This section outlines the basic test procedure for testing the EVM.

#### 3.1 Test Block Diagram

The test set-up for general testing of the DAC31x4 with the TSW1400 pattern generation card is shown in Figure 6



**Figure 6. Test Setup Block Diagram**

#### 3.2 Test Set-up Connection

- TSW1400 Pattern Generator
  1. Connect the 5-V power supply to J12, the 5V\_IN jack of the TSW1400 EVM.
  2. Connect the PC's USB port to J5, the mini-USB port of the TSW1400.
- DAC31x4 EVM
  1. Connect the J13 connector of DAC31x4 EVM to the J4 connector of TSW1400 EVM.
  2. Connect 6 V to J3, the power in jack of the DAC31x4 EVM.
  3. Connect the PC's USB port to J2, the USB port of the DAC31x4 EVM. Use a standard A to mini-B connector cable.
  4. Provide a 1.5-Vrms, 500-MHz max clock at J9, the *CLKIN* SMA port of the DAC31x4 EVM.
  5. Provide 12-dBm maximum, 300-MHz to 4-GHz LO source at the J13 port of the DAC31x4 EVM. This provides the LO source to the TRF3705-15 modulators.
  6. Connect the RF output port of J15 to the spectrum analyzer.

### 3.3 TSW1400 Quick Start Operation

Please reference the TSW1400 user's guide for more detailed explanations of the TSW1400 setup and operation. This document assumes the TSW1400 software is installed and functioning properly.

Two-tone test configuration from *High Speed Data Converter Pro (HSDCP)* as illustrated in [Figure 7](#):

- In the *Tone BW* section, entering 3M for the two-tone case means tone-spacing. For single-tone, *Tone BW* can be 1.
- Enter the desired number of tones (#).
- Enter the value for the baseband shifting in the *Tone Center*.
- On *Tone selection* select *I/Q* for a complex pattern, and *Real* for a real pattern.
- Enter *Data Rate (SPS)* for the *DAC sampling frequency*.
- In the *DAC Option* selection, choose between *2's Complement* and *Offset binary*.

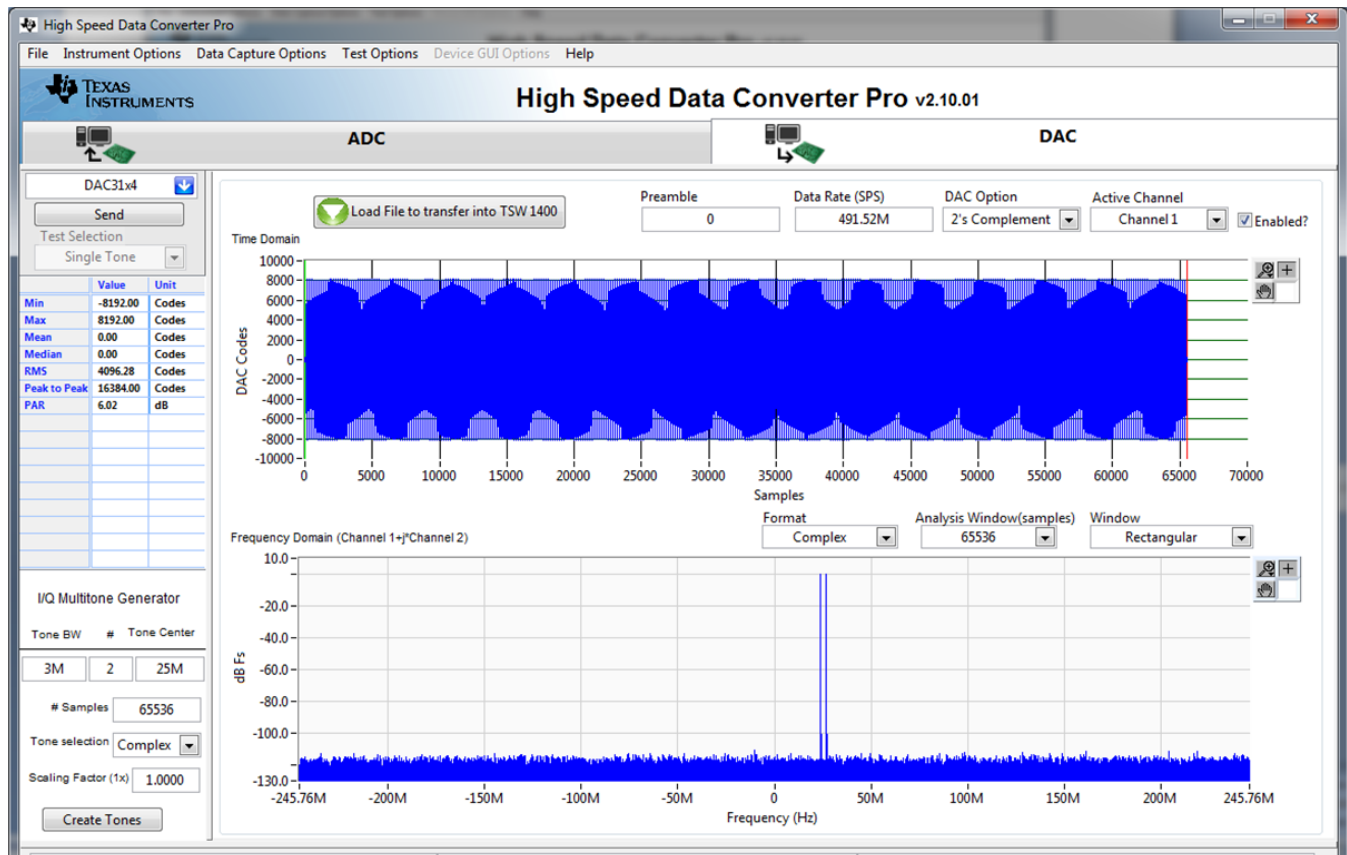
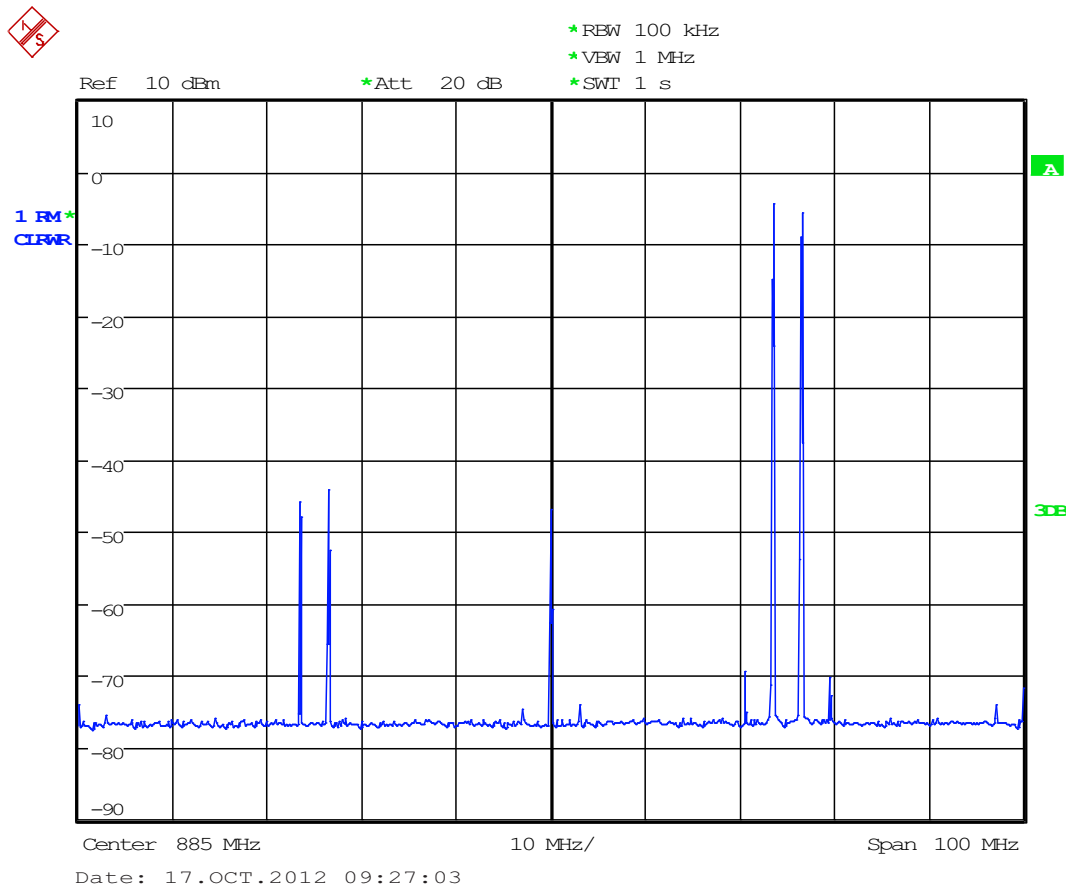


Figure 7. TSW1400 Two-Tone Programming GUI



### 3.4 DAC31x4 Software Quick-Start Guide

- Provide the clock input 491.52 MHz at 1.5 Vrms at J9 SMA connector of the DAC31x4 EVM
- Provide the LO source of 885 MHz (12-dBm max) at either J13 SMA connector of the DAC31x4 EVM
- Turn on the power to the board and press the reset button on the EVM
- Press the *Reset USB Port* button in the GUI and verify the USB communication
- Switch to the INPUT tab of the GUI
- Click *LOAD REGS*, browse to the installation folder and load example file *dac3174\_reg.txt*. This file contains settings for DAC3174 running at 491.52 MSPS. Load this file and wait a couple of seconds for the settings to go into effect.
- Verify the spectrum using the Spectrum Analyzer at the two RF outputs of the DAC EVM (J15).



**Figure 8. Captured Two-Tone from Spectrum Analyzer**

Figure 8 shows a captured two-tone from spectrum analyzer as illustrated configuration of TSW1400 GUI, *High Speed Data Converter Pro*, in Figure 7. This two-tone is centered at 885 MHz as providing 885 MHz of external LO from the signal generator.

### 3.5 DAC3174 Output Performance for WCDMA and LTE

10 MHz of LTE signal is measured for Adjacent Channel Power Ratio (ACPR) performance, as shown in Figure 9. The specification of this pattern is based on 3GPP LTE FDD E-TM1.1 and Quadrature Phase Shift Keying (QPSK) of the modulation scheme. Measured ACPR shows  $-72.80$  dB and  $-72.18$  dB at adjacent channel and  $-74.73$  dB and  $-74.83$  dB at alternate channel.

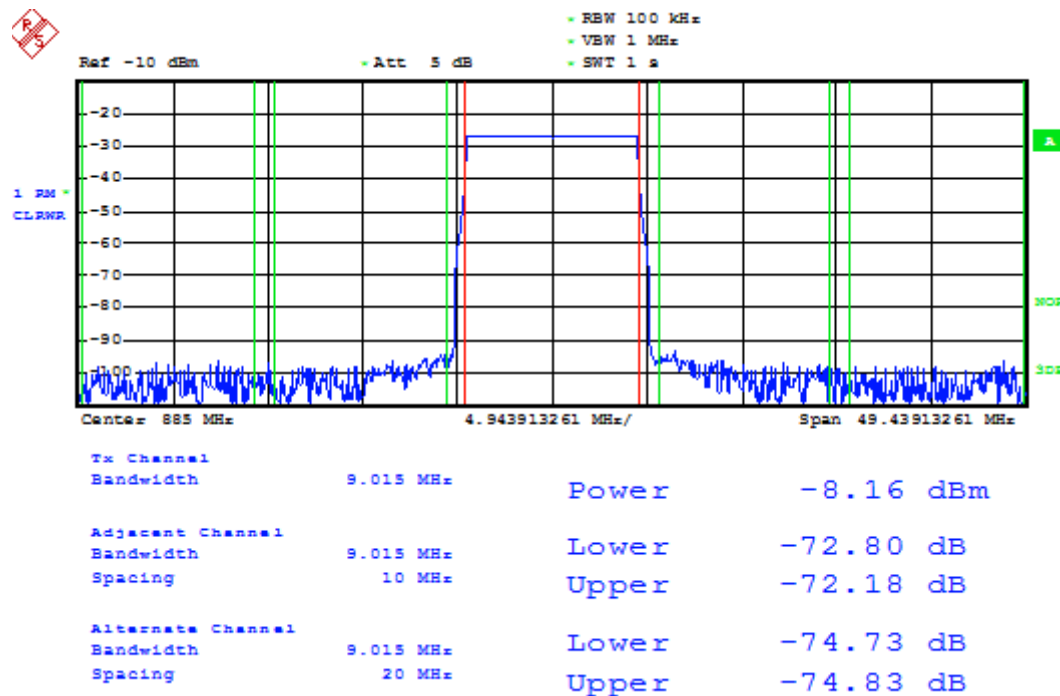


Figure 9. DAC3174 and TRF3705 LTE, 10-MHz Output (Baseband = 0 MHz, LO = 885 MHz)

5 MHz of WCDMA signal is measured for ACPR performance as shown in Figure 10. The specification of this pattern is based on 3GPP FDD and spread-spectrum modulation technique. Measured ACPR shows -71.44 dB and -71.27 dB at adjacent channel and -73.87 dB and -74.37 dB at alternate channel.

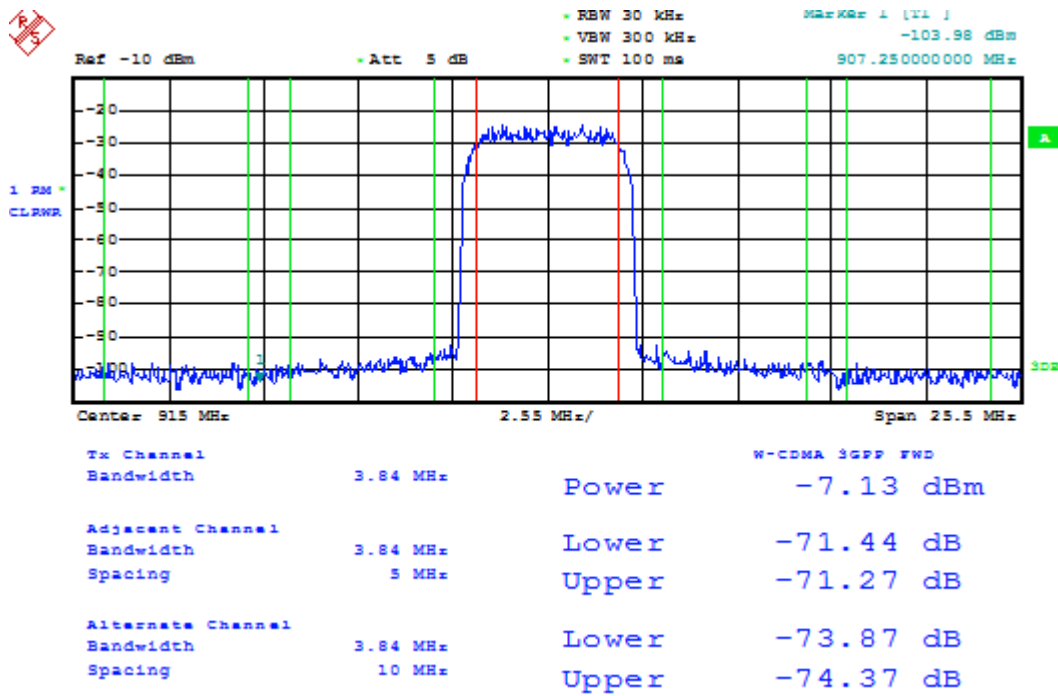


Figure 10. DAC3174 and TRF3705 WCDMA, 5-MHz Output (Baseband = 30 MHz, LO = 885 MHz)

## EVALUATION BOARD/KIT/MODULE (EVM) ADDITIONAL TERMS

Texas Instruments (TI) provides the enclosed Evaluation Board/Kit/Module (EVM) under the following conditions:

The user assumes all responsibility and liability for proper and safe handling of the goods. Further, the user indemnifies TI from all claims arising from the handling or use of the goods.

Should this evaluation board/kit not meet the specifications indicated in the User's Guide, the board/kit may be returned within 30 days from the date of delivery for a full refund. THE FOREGOING LIMITED WARRANTY IS THE EXCLUSIVE WARRANTY MADE BY SELLER TO BUYER AND IS IN LIEU OF ALL OTHER WARRANTIES, EXPRESSED, IMPLIED, OR STATUTORY, INCLUDING ANY WARRANTY OF MERCHANTABILITY OR FITNESS FOR ANY PARTICULAR PURPOSE. EXCEPT TO THE EXTENT OF THE INDEMNITY SET FORTH ABOVE, NEITHER PARTY SHALL BE LIABLE TO THE OTHER FOR ANY INDIRECT, SPECIAL, INCIDENTAL, OR CONSEQUENTIAL DAMAGES.

Please read the User's Guide and, specifically, the Warnings and Restrictions notice in the User's Guide prior to handling the product. This notice contains important safety information about temperatures and voltages. For additional information on TI's environmental and/or safety programs, please visit [www.ti.com/esh](http://www.ti.com/esh) or contact TI.

No license is granted under any patent right or other intellectual property right of TI covering or relating to any machine, process, or combination in which such TI products or services might be or are used. TI currently deals with a variety of customers for products, and therefore our arrangement with the user is not exclusive. TI assumes no liability for applications assistance, customer product design, software performance, or infringement of patents or services described herein.

## REGULATORY COMPLIANCE INFORMATION

As noted in the EVM User's Guide and/or EVM itself, this EVM and/or accompanying hardware may or may not be subject to the Federal Communications Commission (FCC) and Industry Canada (IC) rules.

For EVMs **not** subject to the above rules, this evaluation board/kit/module is intended for use for ENGINEERING DEVELOPMENT, DEMONSTRATION OR EVALUATION PURPOSES ONLY and is not considered by TI to be a finished end product fit for general consumer use. It generates, uses, and can radiate radio frequency energy and has not been tested for compliance with the limits of computing devices pursuant to part 15 of FCC or ICES-003 rules, which are designed to provide reasonable protection against radio frequency interference. Operation of the equipment may cause interference with radio communications, in which case the user at his own expense will be required to take whatever measures may be required to correct this interference.

### General Statement for EVMs including a radio

*User Power/Frequency Use Obligations:* This radio is intended for development/professional use only in legally allocated frequency and power limits. Any use of radio frequencies and/or power availability of this EVM and its development application(s) must comply with local laws governing radio spectrum allocation and power limits for this evaluation module. It is the user's sole responsibility to only operate this radio in legally acceptable frequency space and within legally mandated power limitations. Any exceptions to this are strictly prohibited and unauthorized by Texas Instruments unless user has obtained appropriate experimental/development licenses from local regulatory authorities, which is responsibility of user including its acceptable authorization.

### For EVMs annotated as FCC – FEDERAL COMMUNICATIONS COMMISSION Part 15 Compliant

#### Caution

This device complies with part 15 of the FCC Rules. Operation is subject to the following two conditions: (1) This device may not cause harmful interference, and (2) this device must accept any interference received, including interference that may cause undesired operation.

Changes or modifications not expressly approved by the party responsible for compliance could void the user's authority to operate the equipment.

### FCC Interference Statement for Class A EVM devices

This equipment has been tested and found to comply with the limits for a Class A digital device, pursuant to part 15 of the FCC Rules. These limits are designed to provide reasonable protection against harmful interference when the equipment is operated in a commercial environment. This equipment generates, uses, and can radiate radio frequency energy and, if not installed and used in accordance with the instruction manual, may cause harmful interference to radio communications. Operation of this equipment in a residential area is likely to cause harmful interference in which case the user will be required to correct the interference at his own expense.

### **FCC Interference Statement for Class B EVM devices**

This equipment has been tested and found to comply with the limits for a Class B digital device, pursuant to part 15 of the FCC Rules. These limits are designed to provide reasonable protection against harmful interference in a residential installation. This equipment generates, uses and can radiate radio frequency energy and, if not installed and used in accordance with the instructions, may cause harmful interference to radio communications. However, there is no guarantee that interference will not occur in a particular installation. If this equipment does cause harmful interference to radio or television reception, which can be determined by turning the equipment off and on, the user is encouraged to try to correct the interference by one or more of the following measures:

- Reorient or relocate the receiving antenna.
- Increase the separation between the equipment and receiver.
- Connect the equipment into an outlet on a circuit different from that to which the receiver is connected.
- Consult the dealer or an experienced radio/TV technician for help.

### **For EVMs annotated as IC – INDUSTRY CANADA Compliant**

This Class A or B digital apparatus complies with Canadian ICES-003.

Changes or modifications not expressly approved by the party responsible for compliance could void the user's authority to operate the equipment.

### **Concerning EVMs including radio transmitters**

This device complies with Industry Canada licence-exempt RSS standard(s). Operation is subject to the following two conditions: (1) this device may not cause interference, and (2) this device must accept any interference, including interference that may cause undesired operation of the device.

### **Concerning EVMs including detachable antennas**

Under Industry Canada regulations, this radio transmitter may only operate using an antenna of a type and maximum (or lesser) gain approved for the transmitter by Industry Canada. To reduce potential radio interference to other users, the antenna type and its gain should be so chosen that the equivalent isotropically radiated power (e.i.r.p.) is not more than that necessary for successful communication.

This radio transmitter has been approved by Industry Canada to operate with the antenna types listed in the user guide with the maximum permissible gain and required antenna impedance for each antenna type indicated. Antenna types not included in this list, having a gain greater than the maximum gain indicated for that type, are strictly prohibited for use with this device.

Cet appareil numérique de la classe A ou B est conforme à la norme NMB-003 du Canada.

Les changements ou les modifications pas expressément approuvés par la partie responsable de la conformité ont pu vider l'autorité de l'utilisateur pour actionner l'équipement.

### **Concernant les EVMs avec appareils radio**

Le présent appareil est conforme aux CNR d'Industrie Canada applicables aux appareils radio exempts de licence. L'exploitation est autorisée aux deux conditions suivantes : (1) l'appareil ne doit pas produire de brouillage, et (2) l'utilisateur de l'appareil doit accepter tout brouillage radioélectrique subi, même si le brouillage est susceptible d'en compromettre le fonctionnement.

### **Concernant les EVMs avec antennes détachables**

Conformément à la réglementation d'Industrie Canada, le présent émetteur radio peut fonctionner avec une antenne d'un type et d'un gain maximal (ou inférieur) approuvé pour l'émetteur par Industrie Canada. Dans le but de réduire les risques de brouillage radioélectrique à l'intention des autres utilisateurs, il faut choisir le type d'antenne et son gain de sorte que la puissance isotrope rayonnée équivalente (p.i.r.e.) ne dépasse pas l'intensité nécessaire à l'établissement d'une communication satisfaisante.

Le présent émetteur radio a été approuvé par Industrie Canada pour fonctionner avec les types d'antenne énumérés dans le manuel d'usage et ayant un gain admissible maximal et l'impédance requise pour chaque type d'antenne. Les types d'antenne non inclus dans cette liste, ou dont le gain est supérieur au gain maximal indiqué, sont strictement interdits pour l'exploitation de l'émetteur.

## **【Important Notice for Users of this Product in Japan】**

### **This development kit is NOT certified as Confirming to Technical Regulations of Radio Law of Japan**

If you use this product in Japan, you are required by Radio Law of Japan to follow the instructions below with respect to this product:

1. Use this product in a shielded room or any other test facility as defined in the notification #173 issued by Ministry of Internal Affairs and Communications on March 28, 2006, based on Sub-section 1.1 of Article 6 of the Ministry's Rule for Enforcement of Radio Law of Japan,
2. Use this product only after you obtained the license of Test Radio Station as provided in Radio Law of Japan with respect to this product, or
3. Use of this product only after you obtained the Technical Regulations Conformity Certification as provided in Radio Law of Japan with respect to this product. Also, please do not transfer this product, unless you give the same notice above to the transferee. Please note that if you could not follow the instructions above, you will be subject to penalties of Radio Law of Japan.

**Texas Instruments Japan Limited**  
**(address) 24-1, Nishi-Shinjuku 6 chome, Shinjuku-ku, Tokyo, Japan**

<http://www.tij.co.jp>

#### **【ご使用にあたっての注】**

本開発キットは技術基準適合証明を受けておりません。

本製品のご使用に際しては、電波法遵守のため、以下のいずれかの措置を取っていただく必要がありますのでご注意ください。

1. 電波法施行規則第6条第1項第1号に基づく平成18年3月28日総務省告示第173号で定められた電波暗室等の試験設備でご使用いただく。
2. 実験局の免許を取得後ご使用いただく。
3. 技術基準適合証明を取得後ご使用いただく。

なお、本製品は、上記の「ご使用にあたっての注意」を譲渡先、移転先に通知しない限り、譲渡、移転できないものとします。

上記を遵守頂けない場合は、電波法の罰則が適用される可能性があることをご留意ください。

日本テキサス・インスツルメンツ株式会社  
東京都新宿区西新宿6丁目24番1号  
西新宿三井ビル

<http://www.tij.co.jp>

## **EVALUATION BOARD/KIT/MODULE (EVM) WARNINGS, RESTRICTIONS AND DISCLAIMERS**

**For Feasibility Evaluation Only, in Laboratory/Development Environments.** Unless otherwise indicated, this EVM is not a finished electrical equipment and not intended for consumer use. It is intended solely for use for preliminary feasibility evaluation in laboratory/development environments by technically qualified electronics experts who are familiar with the dangers and application risks associated with handling electrical mechanical components, systems and subsystems. It should not be used as all or part of a finished end product.

Your Sole Responsibility and Risk. You acknowledge, represent and agree that:

1. You have unique knowledge concerning Federal, State and local regulatory requirements (including but not limited to Food and Drug Administration regulations, if applicable) which relate to your products and which relate to your use (and/or that of your employees, affiliates, contractors or designees) of the EVM for evaluation, testing and other purposes.
2. You have full and exclusive responsibility to assure the safety and compliance of your products with all such laws and other applicable regulatory requirements, and also to assure the safety of any activities to be conducted by you and/or your employees, affiliates, contractors or designees, using the EVM. Further, you are responsible to assure that any interfaces (electronic and/or mechanical) between the EVM and any human body are designed with suitable isolation and means to safely limit accessible leakage currents to minimize the risk of electrical shock hazard.
3. You will employ reasonable safeguards to ensure that your use of the EVM will not result in any property damage, injury or death, even if the EVM should fail to perform as described or expected.
4. You will take care of proper disposal and recycling of the EVM's electronic components and packing materials.

**Certain Instructions.** It is important to operate this EVM within TI's recommended specifications and environmental considerations per the user guidelines. Exceeding the specified EVM ratings (including but not limited to input and output voltage, current, power, and environmental ranges) may cause property damage, personal injury or death. If there are questions concerning these ratings please contact a TI field representative prior to connecting interface electronics including input power and intended loads. Any loads applied outside of the specified output range may result in unintended and/or inaccurate operation and/or possible permanent damage to the EVM and/or interface electronics. Please consult the EVM User's Guide prior to connecting any load to the EVM output. If there is uncertainty as to the load specification, please contact a TI field representative. During normal operation, some circuit components may have case temperatures greater than 60°C as long as the input and output are maintained at a normal ambient operating temperature. These components include but are not limited to linear regulators, switching transistors, pass transistors, and current sense resistors which can be identified using the EVM schematic located in the EVM User's Guide. When placing measurement probes near these devices during normal operation, please be aware that these devices may be very warm to the touch. As with all electronic evaluation tools, only qualified personnel knowledgeable in electronic measurement and diagnostics normally found in development environments should use these EVMs.

**Agreement to Defend, Indemnify and Hold Harmless.** You agree to defend, indemnify and hold TI, its licensors and their representatives harmless from and against any and all claims, damages, losses, expenses, costs and liabilities (collectively, "Claims") arising out of or in connection with any use of the EVM that is not in accordance with the terms of the agreement. This obligation shall apply whether Claims arise under law of tort or contract or any other legal theory, and even if the EVM fails to perform as described or expected.

**Safety-Critical or Life-Critical Applications.** If you intend to evaluate the components for possible use in safety critical applications (such as life support) where a failure of the TI product would reasonably be expected to cause severe personal injury or death, such as devices which are classified as FDA Class III or similar classification, then you must specifically notify TI of such intent and enter into a separate Assurance and Indemnity Agreement.

Mailing Address: Texas Instruments, Post Office Box 655303, Dallas, Texas 75265  
Copyright © 2013, Texas Instruments Incorporated

## IMPORTANT NOTICE

Texas Instruments Incorporated and its subsidiaries (TI) reserve the right to make corrections, enhancements, improvements and other changes to its semiconductor products and services per JESD46, latest issue, and to discontinue any product or service per JESD48, latest issue. Buyers should obtain the latest relevant information before placing orders and should verify that such information is current and complete. All semiconductor products (also referred to herein as "components") are sold subject to TI's terms and conditions of sale supplied at the time of order acknowledgment.

TI warrants performance of its components to the specifications applicable at the time of sale, in accordance with the warranty in TI's terms and conditions of sale of semiconductor products. Testing and other quality control techniques are used to the extent TI deems necessary to support this warranty. Except where mandated by applicable law, testing of all parameters of each component is not necessarily performed.

TI assumes no liability for applications assistance or the design of Buyers' products. Buyers are responsible for their products and applications using TI components. To minimize the risks associated with Buyers' products and applications, Buyers should provide adequate design and operating safeguards.

TI does not warrant or represent that any license, either express or implied, is granted under any patent right, copyright, mask work right, or other intellectual property right relating to any combination, machine, or process in which TI components or services are used. Information published by TI regarding third-party products or services does not constitute a license to use such products or services or a warranty or endorsement thereof. Use of such information may require a license from a third party under the patents or other intellectual property of the third party, or a license from TI under the patents or other intellectual property of TI.

Reproduction of significant portions of TI information in TI data books or data sheets is permissible only if reproduction is without alteration and is accompanied by all associated warranties, conditions, limitations, and notices. TI is not responsible or liable for such altered documentation. Information of third parties may be subject to additional restrictions.

Resale of TI components or services with statements different from or beyond the parameters stated by TI for that component or service voids all express and any implied warranties for the associated TI component or service and is an unfair and deceptive business practice. TI is not responsible or liable for any such statements.

Buyer acknowledges and agrees that it is solely responsible for compliance with all legal, regulatory and safety-related requirements concerning its products, and any use of TI components in its applications, notwithstanding any applications-related information or support that may be provided by TI. Buyer represents and agrees that it has all the necessary expertise to create and implement safeguards which anticipate dangerous consequences of failures, monitor failures and their consequences, lessen the likelihood of failures that might cause harm and take appropriate remedial actions. Buyer will fully indemnify TI and its representatives against any damages arising out of the use of any TI components in safety-critical applications.

In some cases, TI components may be promoted specifically to facilitate safety-related applications. With such components, TI's goal is to help enable customers to design and create their own end-product solutions that meet applicable functional safety standards and requirements. Nonetheless, such components are subject to these terms.

No TI components are authorized for use in FDA Class III (or similar life-critical medical equipment) unless authorized officers of the parties have executed a special agreement specifically governing such use.

Only those TI components which TI has specifically designated as military grade or "enhanced plastic" are designed and intended for use in military/aerospace applications or environments. Buyer acknowledges and agrees that any military or aerospace use of TI components which have **not** been so designated is solely at the Buyer's risk, and that Buyer is solely responsible for compliance with all legal and regulatory requirements in connection with such use.

TI has specifically designated certain components as meeting ISO/TS16949 requirements, mainly for automotive use. In any case of use of non-designated products, TI will not be responsible for any failure to meet ISO/TS16949.

### Products

Audio	<a href="http://www.ti.com/audio">www.ti.com/audio</a>
Amplifiers	<a href="http://amplifier.ti.com">amplifier.ti.com</a>
Data Converters	<a href="http://dataconverter.ti.com">dataconverter.ti.com</a>
DLP® Products	<a href="http://www.dlp.com">www.dlp.com</a>
DSP	<a href="http://dsp.ti.com">dsp.ti.com</a>
Clocks and Timers	<a href="http://www.ti.com/clocks">www.ti.com/clocks</a>
Interface	<a href="http://interface.ti.com">interface.ti.com</a>
Logic	<a href="http://logic.ti.com">logic.ti.com</a>
Power Mgmt	<a href="http://power.ti.com">power.ti.com</a>
Microcontrollers	<a href="http://microcontroller.ti.com">microcontroller.ti.com</a>
RFID	<a href="http://www.ti-rfid.com">www.ti-rfid.com</a>
OMAP Applications Processors	<a href="http://www.ti.com/omap">www.ti.com/omap</a>
Wireless Connectivity	<a href="http://www.ti.com/wirelessconnectivity">www.ti.com/wirelessconnectivity</a>

### Applications

Automotive and Transportation	<a href="http://www.ti.com/automotive">www.ti.com/automotive</a>
Communications and Telecom	<a href="http://www.ti.com/communications">www.ti.com/communications</a>
Computers and Peripherals	<a href="http://www.ti.com/computers">www.ti.com/computers</a>
Consumer Electronics	<a href="http://www.ti.com/consumer-apps">www.ti.com/consumer-apps</a>
Energy and Lighting	<a href="http://www.ti.com/energy">www.ti.com/energy</a>
Industrial	<a href="http://www.ti.com/industrial">www.ti.com/industrial</a>
Medical	<a href="http://www.ti.com/medical">www.ti.com/medical</a>
Security	<a href="http://www.ti.com/security">www.ti.com/security</a>
Space, Avionics and Defense	<a href="http://www.ti.com/space-avionics-defense">www.ti.com/space-avionics-defense</a>
Video and Imaging	<a href="http://www.ti.com/video">www.ti.com/video</a>

### TI E2E Community

[e2e.ti.com](http://e2e.ti.com)