

MSP-EXP430FR5739 FRAM Experimenter Board

User's Guide



Literature Number: SLAU343B
May 2011 – Revised February 2012

1	Getting Started With the MSP-EXP430FR5739 FRAM Experimenter Board	5
1.1	Introduction	5
1.2	Kit Contents	6
1.3	MSP-EXP430FR5739 Board Overview	6
1.4	Connecting the Hardware	6
1.5	Starting the PC GUI	6
2	MSP-EXP430FR5739 User Experience Demo	7
2.1	Associated Zip Folder Contents	7
2.2	The User Experience Demo	7
2.3	View, Edit, or Recompile the User Experience Code Using an IDE	13
3	MSP-EXP430FR5739 Hardware	14
3.1	MSP430FR5739IRHA Device Pin Designation	14
3.2	Schematics	15
3.3	PCB Layout	18
3.4	Bill of Materials (BOM)	21
4	Suggested Reading	22
5	References	22

List of Figures

1	MSP-EXP430FR5739 Overview	5
2	Comparing Write Speeds When Writing to Nonvolatile Memory (MSP430FR5739 FRAM vs MSP430F2274 Flash)	8
3	Comparing Average Power When Writing to Nonvolatile Memory at 13 kBps (MSP430FR5739 FRAM vs MSP430F2274 Flash).....	10
4	On-Board Accelerometer	11
5	On-Board NTC Thermistor	12
6	MSP430FR5739 Pin Designation	14
7	Schematics (1 of 3).....	15
8	Schematics (2 of 3).....	16
9	Schematics (3 of 3).....	17
10	MSP-EXP430FR5739 Top Layer	18
11	MSP-EXP430FR5739 Bottom Layer	19
12	MSP-EXP430FR5739 Silkscreen	20

List of Tables

1	User Experience Source Files	13
2	Bill of Materials (BOM)	21

MSP-EXP430FR5739 FRAM Experimenter Board

1 Getting Started With the MSP-EXP430FR5739 FRAM Experimenter Board

1.1 Introduction

The MSP-EXP430FR5739 Experimenter Board introduces TI's first embedded ferro-electric random access memory (FRAM) based MCU, the MSP430FR5739. The experimenter board is an ideal platform for evaluating the latest in embedded memory technology while allowing the user to easily develop, debug, and implement prototypes in an efficient manner.

The MSP430FR5739 device is supported by both IAR Embedded Workbench and Code Composer Studio. It is recommended to download the latest version of the IDE from www.msp430.com.

The Quick Start Guide ([SLAU341](http://www.ti.com/lit/SLAU341)) is recommended for users who cannot wait to get started developing with the MSP430FR5739. For all others, this *MSP-EXP430FR5739 FRAM Experimenter Board User's Guide* provides detailed information on the hardware, the user experience firmware, and the MSP430FR5739 device.

The MSP-EXP430FR5739 Experimenter Board is available for purchase from the TI eStore at <https://estore.ti.com/MSP-EXP430FR5739-MSP-EXP430FR5739-Experimenter-Board-P2430C42.aspx>.

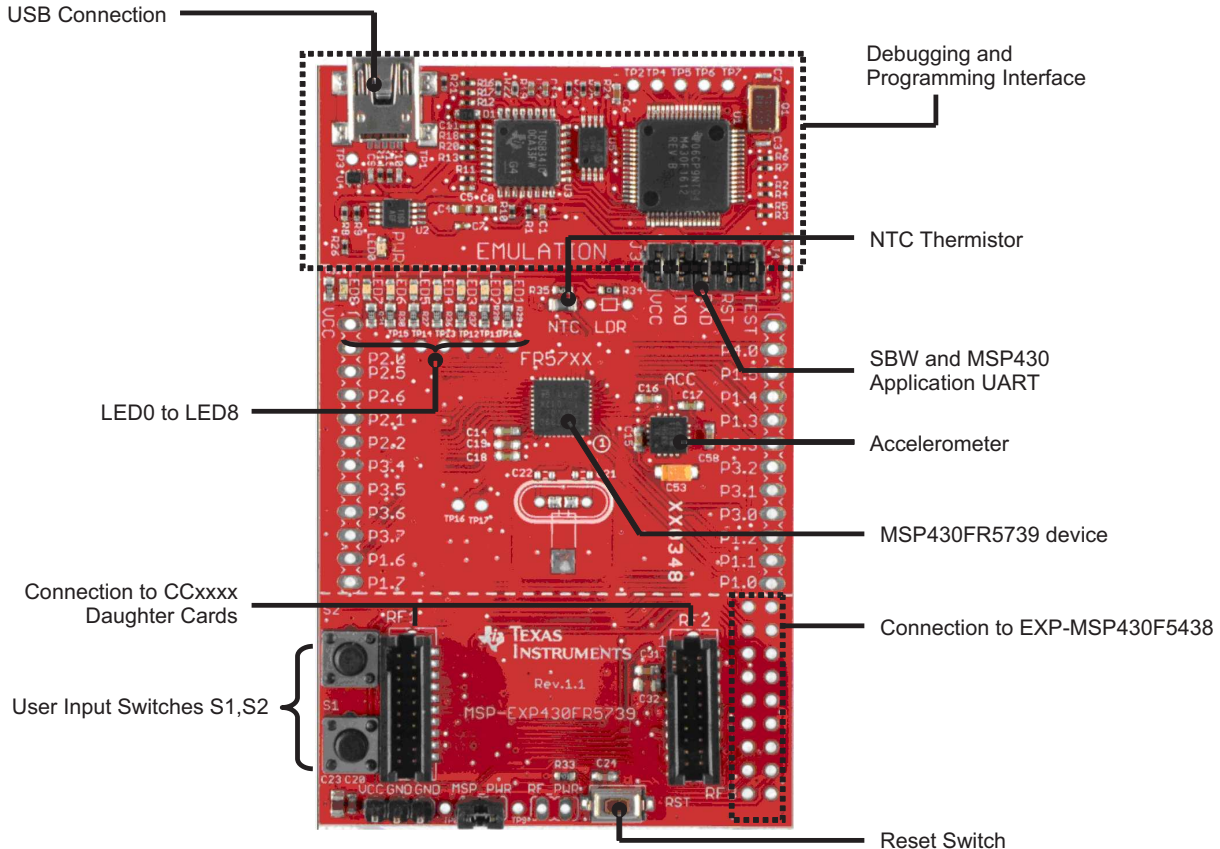


Figure 1. MSP-EXP430FR5739 Overview

1.2 Kit Contents

The MSP-EXP430FR5739 FRAM Experimenter Board kit includes the following:

- The MSP-EXP430FR5739 board
- Mini USB-B cable, 0.5 m
- 12-pin PCB connectors (two male and two female)
- 32.768-kHz clock crystal from Microcrystal (www.microcrystal.com)
The 32.768-kHz crystal can be used as the low-frequency XT oscillator. It is not required for the User Experience code and can be populated as needed.
- Quick start guide

See [Section 2.1](#) for details on the associated software and source code.

1.3 MSP-EXP430FR5739 Board Overview

The experimenter board (see [Figure 1](#)) comes equipped with the following features:

- USB debugging and programming interface that uses a driverless installation and provides an application UART to communicate back to the PC
- On-board ADXL335 accelerometer
- NTC thermistor for temperature sensing
- Two user input switches and a reset switch
- Eight LEDs for output display
- Connectivity to the MSP-EXP430F5438 Experimenter Board
- Connectivity to CCxxx radio daughter cards
- Easily accessible device pins for debugging purposes or as socket for adding customized extension
- Separate power jumpers to measure power to the MSP430 and the RF daughter card.

1.4 Connecting the Hardware

Connect the MSP-EXP430FR5739 to the PC using the enclosed USB cable. If the PC has an MSP430 Integrated Development Environment (IDE) such as Code Composer Studio™ or IAR Embedded Workbench™ already installed, the driver files are automatically located and installed.

If there are no IDEs installed in the PC, unzip the folder associated with this user's guide (see [Section 2.1](#)) and point the installation to the [Install Path]\MSP-EXP430FR5739\Drivers folder.

After the drivers are installed, go to My Computer → Properties → Hardware → Device Manager to verify that the board is enumerated under Ports COM & LPT as MSP430 Application UART.

1.5 Starting the PC GUI

The Graphical User Interface (GUI) for the PC is located in the associated zip file (see [Section 2.1](#)) under [Install Path]\MSP-EXP430FR5739\Graphical User Interface.

Double click on FRAM_GUI.exe to load the PC application. More information on how to use this application is provided in [Section 2](#).

2 MSP-EXP430FR5739 User Experience Demo

2.1 Associated Zip Folder Contents

The zip file that contains the software and source code for the MSP-EXP430FR5739 can be downloaded from www.ti.com/lit/zip/slac492. The contents of the zip include:

- User Experience source code and project files
- Drivers that support the board installation
- PC GUI

The design files for the experimenter board are can be downloaded from www.ti.com/lit/zip/slac502.

2.2 The User Experience Demo

The User Experience demo is pre-loaded in the MSP-EXP430FR5739 board.

The user input to the demo is given using the switches S1 and S2. These switched allow the user to select the mode of operation and other options.

The output from the demo is displayed using the LEDs (LED1 to LED8) and is also sent via the back-channel UART that transmits information to the PC.

There are four modes of operation for the User Experience demo:

1. High-speed FRAM writes
2. Emulating the speed of flash writes
3. Sampling accelerometer data and writing to FRAM
4. Sampling thermistor data and writing to FRAM

2.2.1 Entering and Exiting the Demo Modes

Follow these steps to enter and exit the demo modes:

1. Press switch S1 for mode selection. After you press S1, LED8 through LED5 light up to show the corresponding mode.
2. Press switch S2 to enter the mode.
3. Press switch S2 when inside a mode to turn off the display (LED and UART output). This is useful when measuring power.
4. Press S1 to exit a mode and return to mode selection.

NOTE: Pressing S2 without selecting a mode causes LED8 to toggle rapidly, indicating an invalid sequence. To exit from this mode, press S1 to return to mode selection.

The MSP-EXP430FR5739 board is equipped with a reset switch. On reset, the device displays a short LED lighting sequence.

2.2.2 Using Mode 1 – FRAM High Speed Writes

Mode 1 is entered by pressing S1 once, followed by S2. On entry, LED8 through LED1 light up sequentially to display the speed of FRAM writes.

Every time the LED1 through LED8 sequence is completed, 800KB are written to FRAM. In this mode, FRAM is being written to at about 1.8MB per second. In comparison, a full-speed write to flash can achieve speeds of approximately 13kB per second.

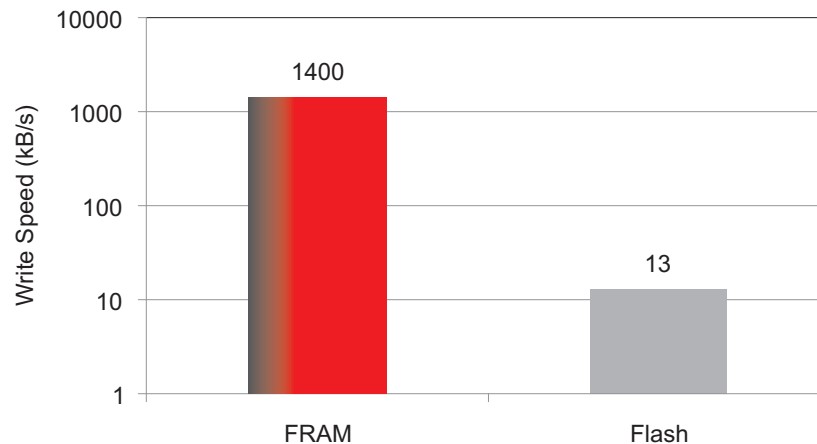


Figure 2. Comparing Write Speeds When Writing to Nonvolatile Memory (MSP430FR5739 FRAM vs MSP430F2274 Flash)

Note that the code is optimized for power and not speed. FRAM memory blocks can be written at speeds greater than 8MB per second depending on how the code is optimized. See the application report *Achieving High-Speed FRAM Writes Using the MSP430FR5739* for more details.

On entering Mode 1, the address of the FRAM scratchpad location is calculated. For the User Experience demo, the scratchpad location starts at 0xD400 and ends at 0xF000. This location can be modified in the header file FR_EXP.h. Note that when changing this location, it is important to first check the code space requirements in the map file to ensure that the FRAM scratchpad area does not overlap with the application code. Different compilers and optimization settings may impact the placement of the application code. If any overlap occurs, the application code may be overwritten in Mode 1, which can cause the demo to fail.

In Mode 1, the system main clock is configured to use the DCO set to 8 MHz. A function that performs long-word writes to FRAM is called continuously inside a while loop. Each time the FRAM_Write() function in FR_EXP.c is called, 512 bytes are written. This number was chosen arbitrarily to mimic flash segments, and there are no restrictions on the number of FRAM bytes that can be written at once. While in Mode 1, the LED sequence changes every time 100kB are written. For example, after the first 100kB are written, LED8 is turned on; after the next 100kB are written, LED8 and LED7 are turned on; and so on. The sequence completes when all eight LEDs are turned on, after which the process rolls over and starts again from LED8.

Also, after every 100kB, a UART data transmission occurs. This data is sent to the PC via a back-channel UART and is used to calculate the FRAM write speed and endurance information that is displayed in the PC GUI. The raw data can also be viewed directly using a PC application such as HyperTerminal.

2.2.2.1 Measuring Current on the MSP-EXP430FR5739

While measuring the active power in a mode, the LEDs should be turned off and the UART transmissions should be halted. This is done by pressing switch S2 while inside the mode. Switch S2 toggles the display settings, turning them on or off as needed. Turning the display off allows the user to isolate and measure the current consumption of the MSP430 device when executing instructions at a clock speed of 8 MHz and writing to FRAM. In bench tests, the MSP430 I_{DVCC} was measured at approximately 800 μ A.

Note that, because of the nature of the FRAM cache, the number of accesses to FRAM memory can greatly impact the active power consumption. Unoptimized code that performs a higher number of accesses to FRAM can cause an increase in the measured current. It is advisable to review the compiler settings when setting up a project using IDEs such as CCS or IAR to ensure the most efficient code and, hence, the least active power.

The project that accompanies this document (see [Section 2.1](#)) uses a level 1 optimization setting in both IAR and CCS that is one step higher than the default optimization levels.

As mentioned previously, when measuring the I_{CC} on the board, it is important to isolate the current consumption by the MSP430FR5739 only. The measurement can be done when the board is powered via USB or externally via a battery. When powering via the USB, it is recommended to disconnect the emulation portion from the MSP430FR5739 device. This can be done by removing jumpers TXD, RXD, Reset, and Test on J3. A multimeter can be used to measure the current into the MSP430FR5739 V_{CC} by removing the V_{CC} jumper and placing the multimeter leads in series.

An alternate approach requires powering the board externally via the V_{CC} and GND connection and disconnecting the USB cable from the board. In this case, the multimeter can be placed in series to V_{CC} by removing the MSP_PWR jumper.

These recommendations hold true when measuring I_{DVCC} in all four modes.

2.2.2.2 Displaying Results on the PC GUI

The GUI associated with this document provides details on the time elapsed in the mode, number of bytes written, speed of FRAM, and the endurance of FRAM emulated over a 512 byte FRAM block.

The endurance is calculated based on the 10^{14} program/erase cycles for the MSP430FR5739. Because the GUI updates every one minute, the scale of reduction of FRAM endurance is very small. A more obvious decline in endurance can be observed in Mode 2 when the endurance reduction when using flash is emulated.

2.2.3 Using Mode 2 – Emulating the Speed of Flash Writes

Mode 2 is entered by pressing S1 twice, followed by S2. In this mode, the maximum speed at which flash can be written to (at a 100% active duty cycle) is emulated on FRAM.

Similar to Mode 1, on entry into Mode 2, LED8 through LED1 light up sequentially to display the speed of emulated flash writes. Every time the LED1 through LED8 sequence is completed, an 800KB write to flash is emulated. In this mode, FRAM is written to at approximately 12 kBps. The entire sequence requires approximately 80 seconds, so the demo should be observed for more than one minute to see the LED sequence roll over.

NOTE: The time to run this sequence varies depending on the frequency source to the interval timer (that is, the VLO).

The test uses the same scratchpad FRAM memory as Mode 1 and the same system setup. In this mode, after every 2KB of memory is written, a UART packet is transmitted to the PC GUI to allow it to calculate speed and endurance information.

When measuring the average power the methodology described in [Section 2.2.2.1](#) needs to be followed.

2.2.3.1 The Math Behind Mode 2

The MSP430F2274 device was used as a benchmark device to calculate the maximum flash write speed. For a 512-byte block of flash, the following parameters were obtained from the MSP430F2274 data sheet:

Segment erase time = $4819 \times t_{FTG} = 16 \text{ ms}$

Where, $t_{FTG} = 1 / f_{FTG} \approx 1 / 300 \text{ kHz}$

512 bytes write time $\approx 51.2 \text{ ms}$

Total time to write to 512 bytes $\approx 67.2 \text{ ms}$

Time to write to 100KB = 6.72 seconds, which calculates to 14.8 kBps

When measuring the speed of continuous flash writes on the bench, the observed speed is approximately 12 kBps, because the code execution overhead is added to the time calculated above.

This write speed is emulated with the FRAM device by maintaining a low active duty cycle and performing one 512 byte block write every 40 ms.

Number of writes per second = $1 / 40 \text{ ms} = 25$

Number of bytes written per second = $512 \times 25 = 12.800 \text{ kBps}$

The timing of the FRAM write is controlled by the VLO clock.

From these bench tests, it can be seen that writing 12 kBps to flash requires nearly 100% duty cycle, while writing the same speed to FRAM requires less than 1% duty cycle. The rest of the time, the FRAM device is in shutdown mode (LPM4), which results in an average current of less than 10 μA . In comparison, for a similar write speed, flash-based MCUs can require average current up to 2.2 mA.

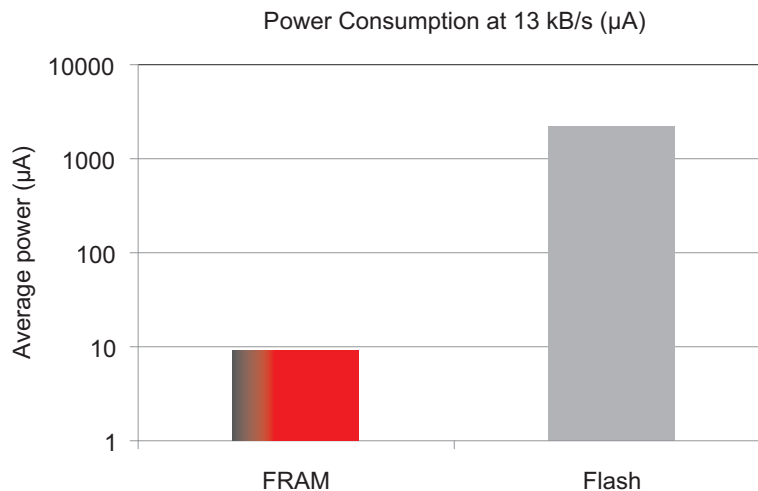


Figure 3. Comparing Average Power When Writing to Nonvolatile Memory at 13 kBps (MSP430FR5739 FRAM vs MSP430F2274 Flash)

2.2.3.2 Displaying Results on the PC GUI

When in Mode 2, the GUI provides details on the time elapsed in the mode, number of bytes written, speed of emulated flash writes, and the endurance emulated over a 512 byte flash block.

The endurance is calculated based on the 10^4 program/erase cycles (minimum) for the MSP430F2274. If a 512-byte block on a flash device were written to at a speed of 12.5 kBps (that is, 25 times per second), the endurance would exceed the minimum limit in $10000/25$ or 6.6 minutes.

Note that the MSP-EXP430FR5739 board only emulates this test to demonstrate a comparison in speed and endurance between FRAM and flash; it does not perform the test on an actual flash device.

2.2.4 Using Mode 3 – Accelerometer Demo

Mode 3 is entered by pressing switch S1 three times, followed by switch S2.

Upon entering this mode, the on-board accelerometer (see [Figure 4](#)) is calibrated. To aid this calibration process, it is recommended to place the board on a level surface before entering the mode.

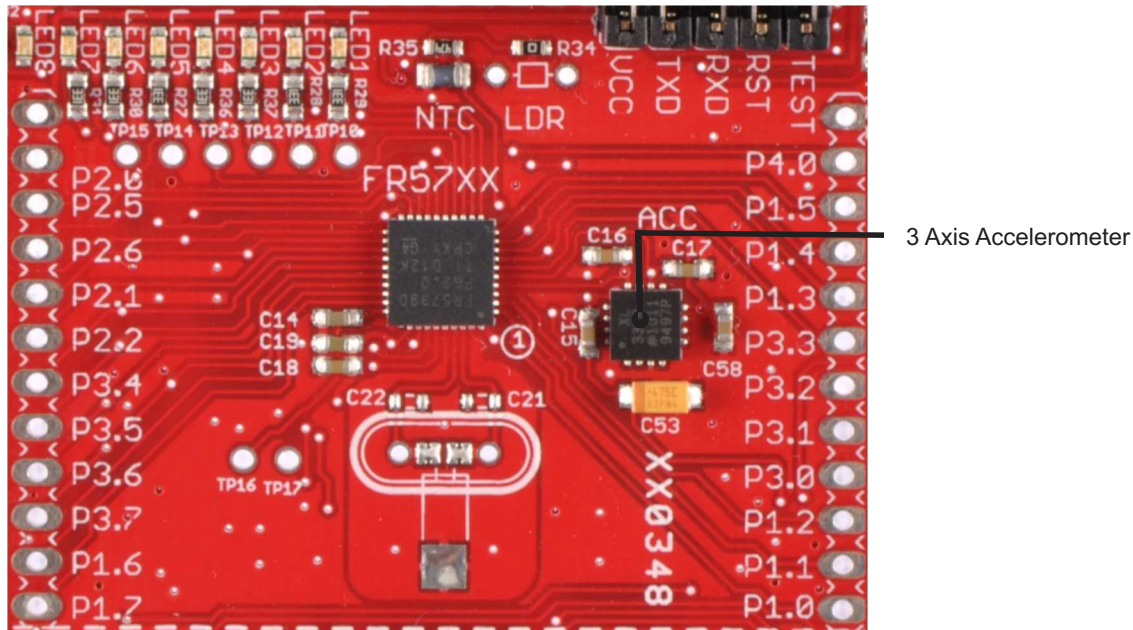


Figure 4. On-Board Accelerometer

After the calibration sequence is completed, LED4 and LED5 are turned on. When tilting the board in an upward or downward direction, the LEDs follow the direction of the tilt. S2 toggles the display on and off, similar to other modes.

Mode 3 also writes the sampled data from the ADC to the FRAM in real time with no wait states or extra cycles spent on setting up the FRAM. This can be observed in the ADC interrupt service routine. The sampling takes place at more than 15k samples per second. At this speed, flash devices require that the data be buffered in RAM before writing to flash. In FRAM devices, the only bottleneck is the speed at which the ADC can sample, not the writes to nonvolatile memory.

2.2.4.1 Displaying Results on the PC GUI

When in the accelerometer mode, the GUI mimics the LEDs that are lit up on the Experimenter Board and are a reflection of the tilt of the board.

2.2.5 Using Mode 4 – Temperature Sensor Demo

Mode 4 is entered by pressing switch S1 four times, followed by switch S2.

Upon entering this mode, the on-board thermistor (see Figure 5) is calibrated.

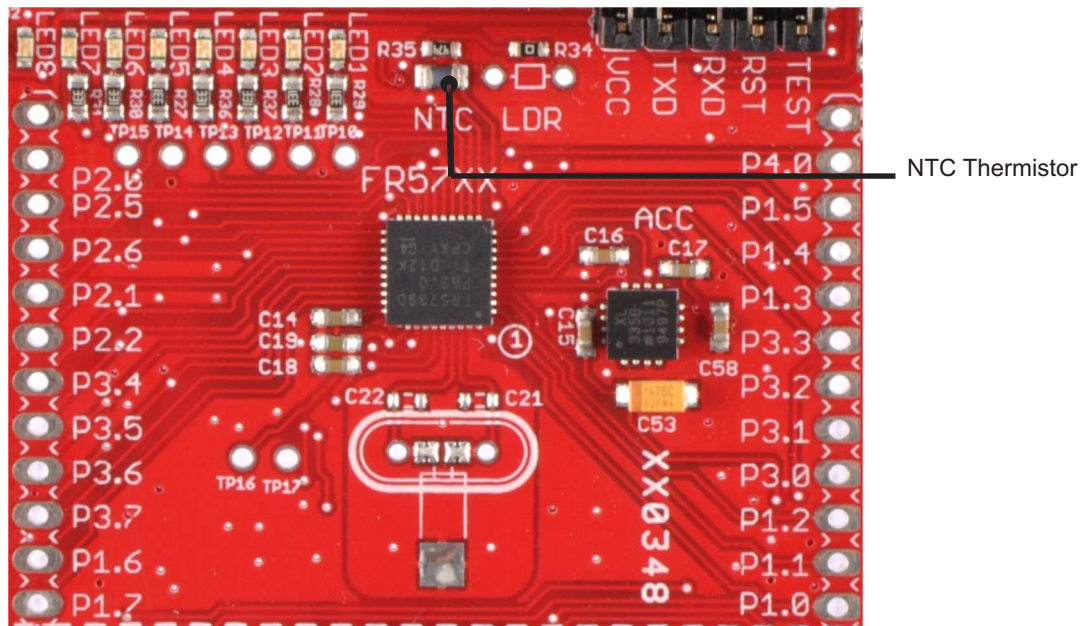


Figure 5. On-Board NTC Thermistor

After the calibration sequence is completed, LED4 and LED5 are turned on. When the NTC resistor is heated (for example, by placing a finger on it), LED3 through LED1 are turned on sequentially. When the NTC is cooled (for example, by using a freeze spray or a keyboard dust remover that uses compressed air) LED5 through LED8 are turned on sequentially.

Similar to Mode 3, Mode 4 also writes the sampled data from the ADC to the FRAM in real time with no wait states or extra cycles spent on setting up the FRAM. This can be observed in the ADC interrupt service routine. The sampling takes place at more than 15k samples per second. At this speed, flash devices require that the data be buffered in RAM before writing to flash. In FRAM devices, the only bottleneck is the speed at which the ADC can sample, not the writes to nonvolatile memory.

2.2.5.1 Displaying Results on the PC GUI

When in the temperature sense mode, the GUI mimics the LEDs that are lit up on the Experimenter Board and are a reflection of the thermistor's ambient temperature measurement.

2.3 View, Edit, or Recompile the User Experience Code Using an IDE

There are different development software tools available for the MSP-EXP430FR5739 board. IAR Embedded Workbench™ KickStart™ and Code Composer Studio™ (CCS) IDEs are both available in a free limited version. IAR Embedded Workbench allows 4KB of C-code compilation. CCS is limited to a code size of 16KB. The software is available at www.ti.com/msp430.

To view, modify, or edit the User Experience code provided with the MSP-EXP430FR5739, an IDE installation is required. The associated software package (see [Section 2.1](#)) supports both IAR and CCS projects.

The User Experience source files and project folders are provided in the folder [Install Path]\MSP-EXP430FR5739\MSP-EXP430FR5739 User Experience.

2.3.1 Setting up the IAR Workspace for the User Experience Code

To set up the IAR workspace for the User Experience demo source code:

1. Double-click and open MSP-EXP430FR5739_Workspace.eww in IAR.
2. The Project is automatically included in the workspace.
3. Click Project → Download & Debug to download the code to the MSP-EXP430FR5739 Experimenter Board.
4. If multiple emulation tools are connected to your PC, click Project → Options → FET Debugger → Connection to explicitly select the experimenter board.

2.3.2 Importing the CCS Project for the User Experience Code

To import the CCS project for the User Experience demo source code:

1. Create a workspace folder.
2. Open CCS and point to the newly created workspace folder.
3. Click Project → Import Existing CCS/CCE Eclipse Project.
4. Browse to the folder [Install Path]\MSP-EXP430FR5739\MSP-EXP430FR5739 User Experience that was extracted from the associated zip file (see [Section 2.1](#)).
5. The project MSP-EXP430FR5739_UserExperience is automatically selected.
6. Click Finish to include the project in the current workspace.
7. Click the Debug icon to download the project

2.3.3 Source Files

[Table 1](#) describes the source files for the User Experience demo.

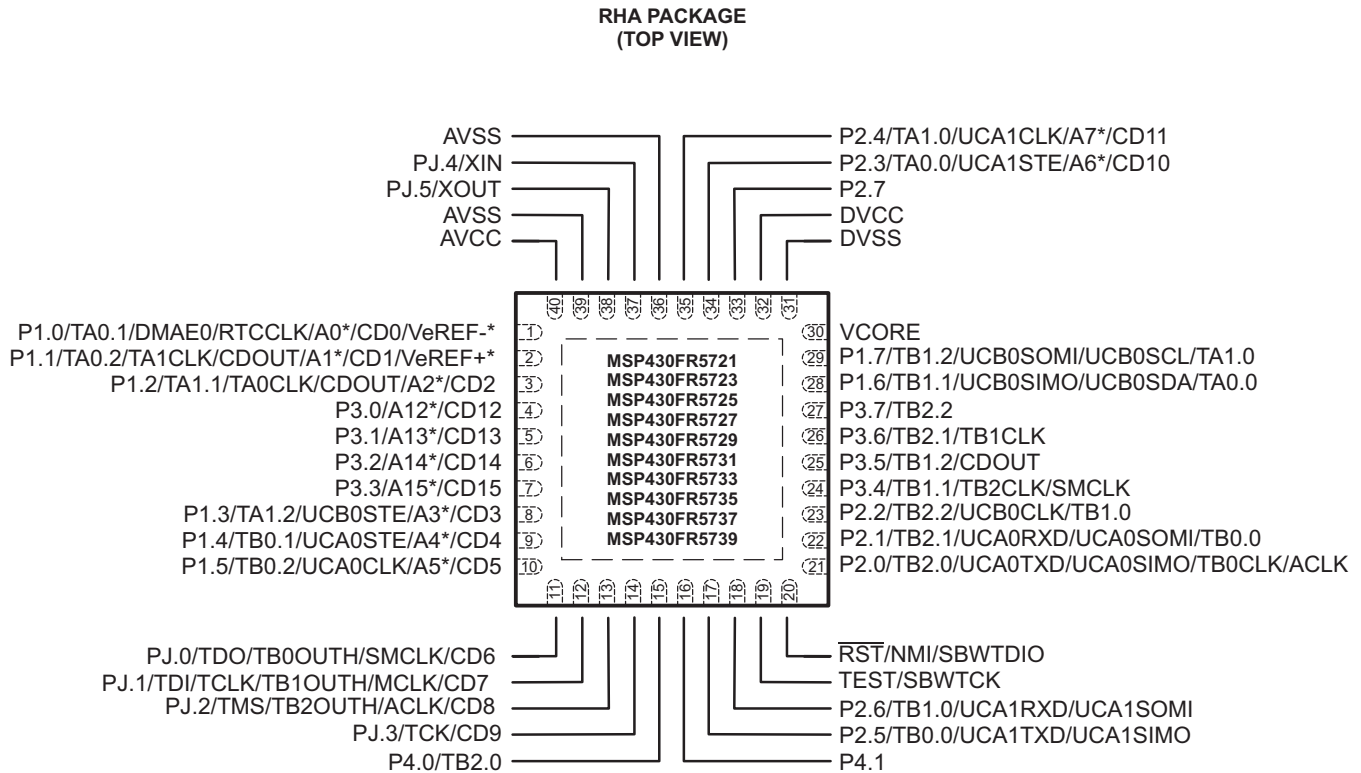
Table 1. User Experience Source Files

Name	Description
Main.c	This file contains the user experience demo
Main.h	This file contains the definitions that are required for main.c
FR_EXP.c	This file contains the definitions of all C functions used by main.c
FR_EXP.h	This file contains all the function declarations needed by main.c and FR_EXP.c

3 MSP-EXP430FR5739 Hardware

3.1 MSP430FR5739IRHA Device Pin Designation

See the MSP430FR5739 data sheet ([SLAS639](#)) for the latest information.



* Not available on MSP430FR5737, MSP430FR5733, MSP430FR5727, MSP430FR5723
Note: Power Pad connection to V_{SS} recommended.

Figure 6. MSP430FR5739 Pin Designation

3.2 Schematics

The schematics and PCB layouts for the MSP-EXP430FR5739 are shown in the following pages.

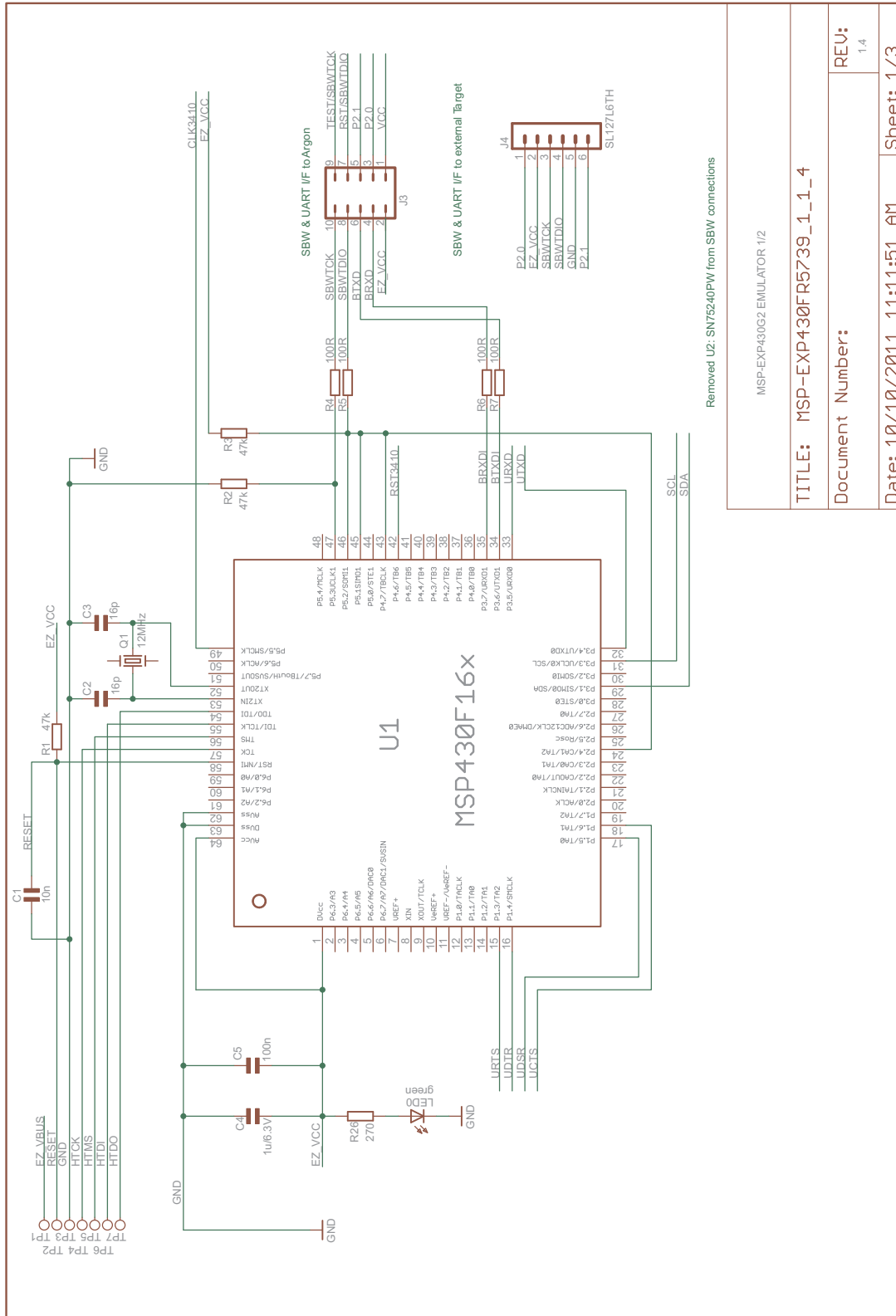
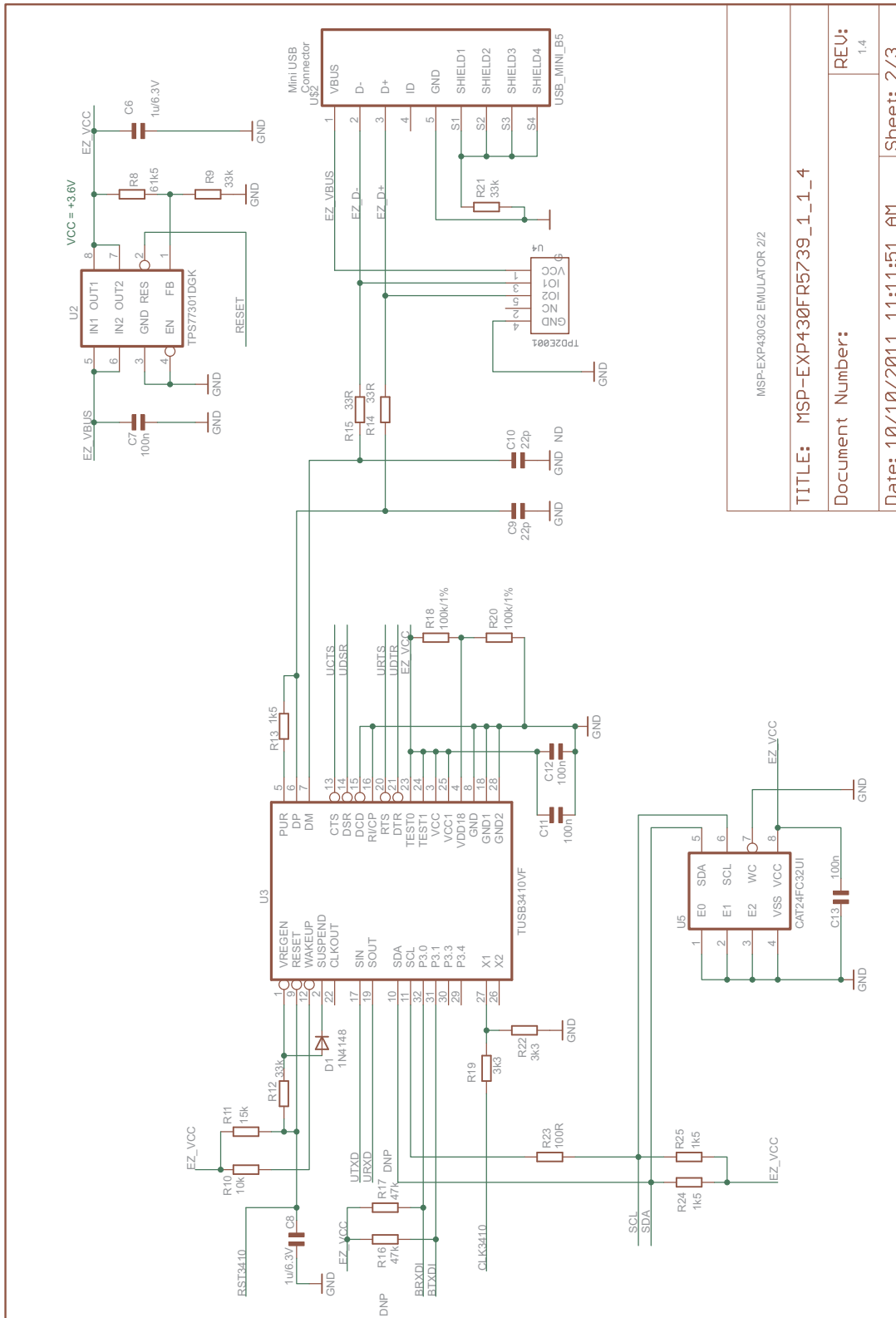


Figure 7. Schematics (1 of 3)



MSP-EXP430G2 EMULATOR 2/2	
TITLE: MSP-EXP430FR5739_1_1_4	
Document Number:	REV: 1.4
Date: 10/10/2011 11:11:51 AM	Sheet: 2/3

Figure 8. Schematics (2 of 3)

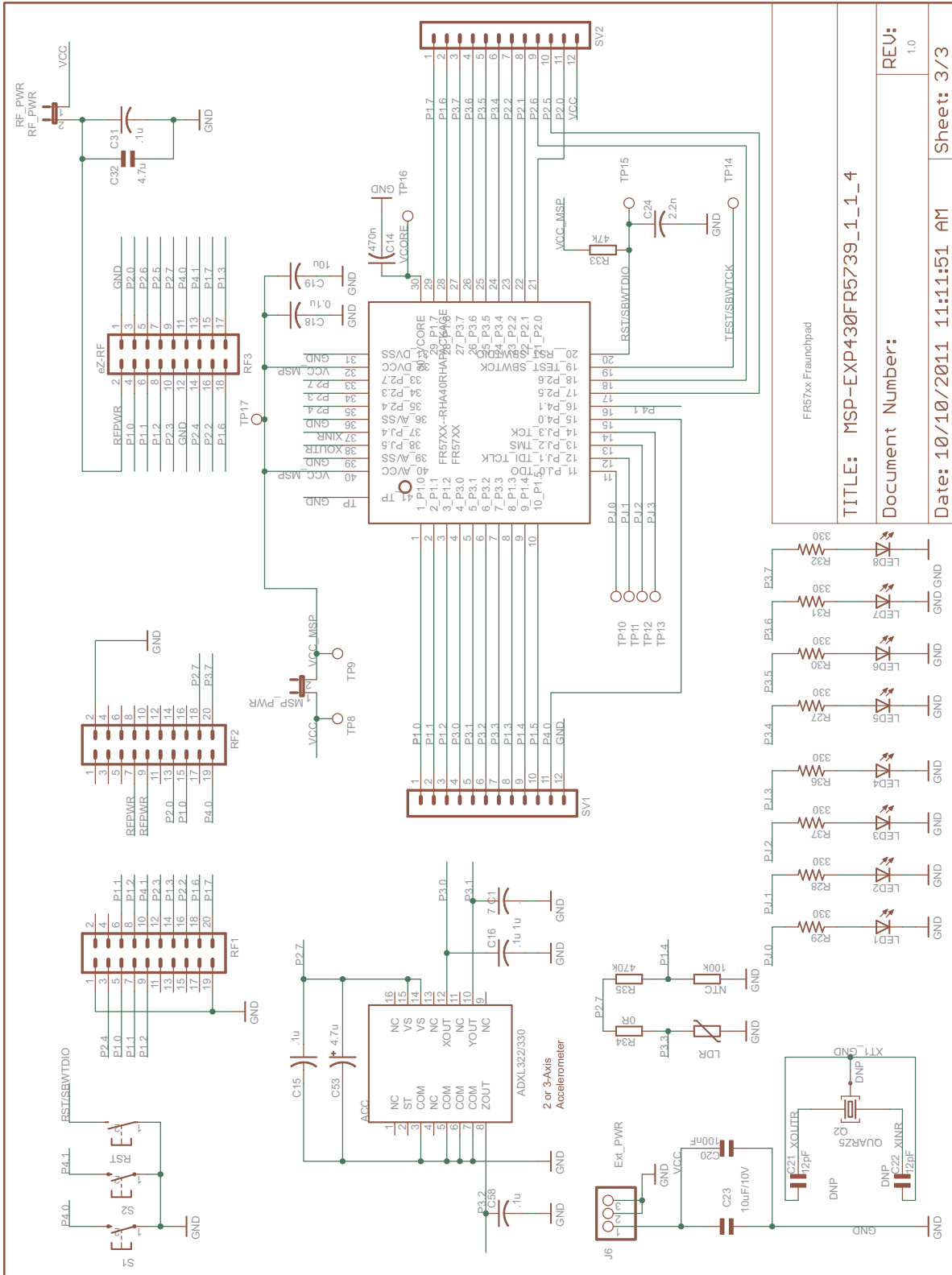


Figure 9. Schematics (3 of 3)

3.3 PCB Layout

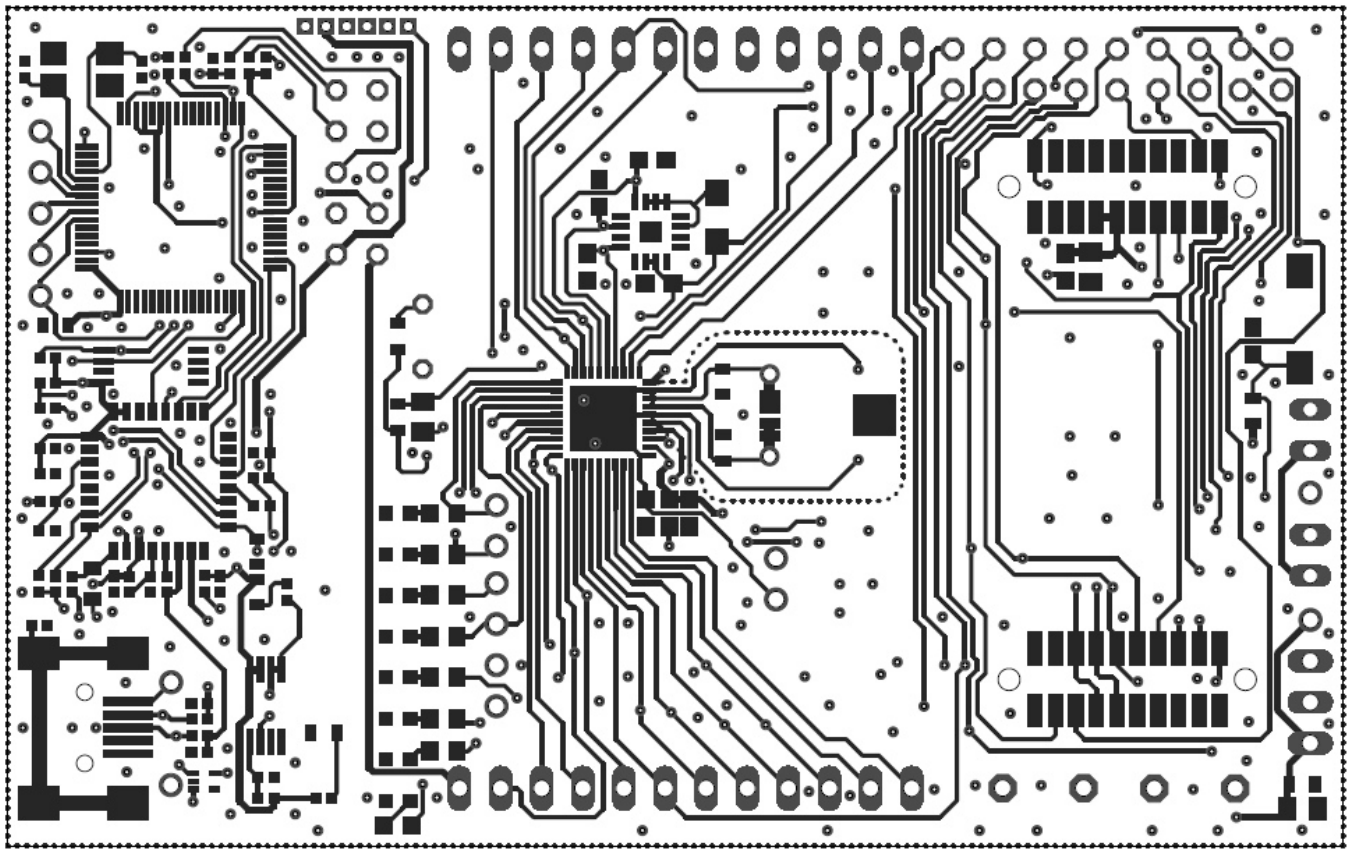


Figure 10. MSP-EXP430FR5739 Top Layer

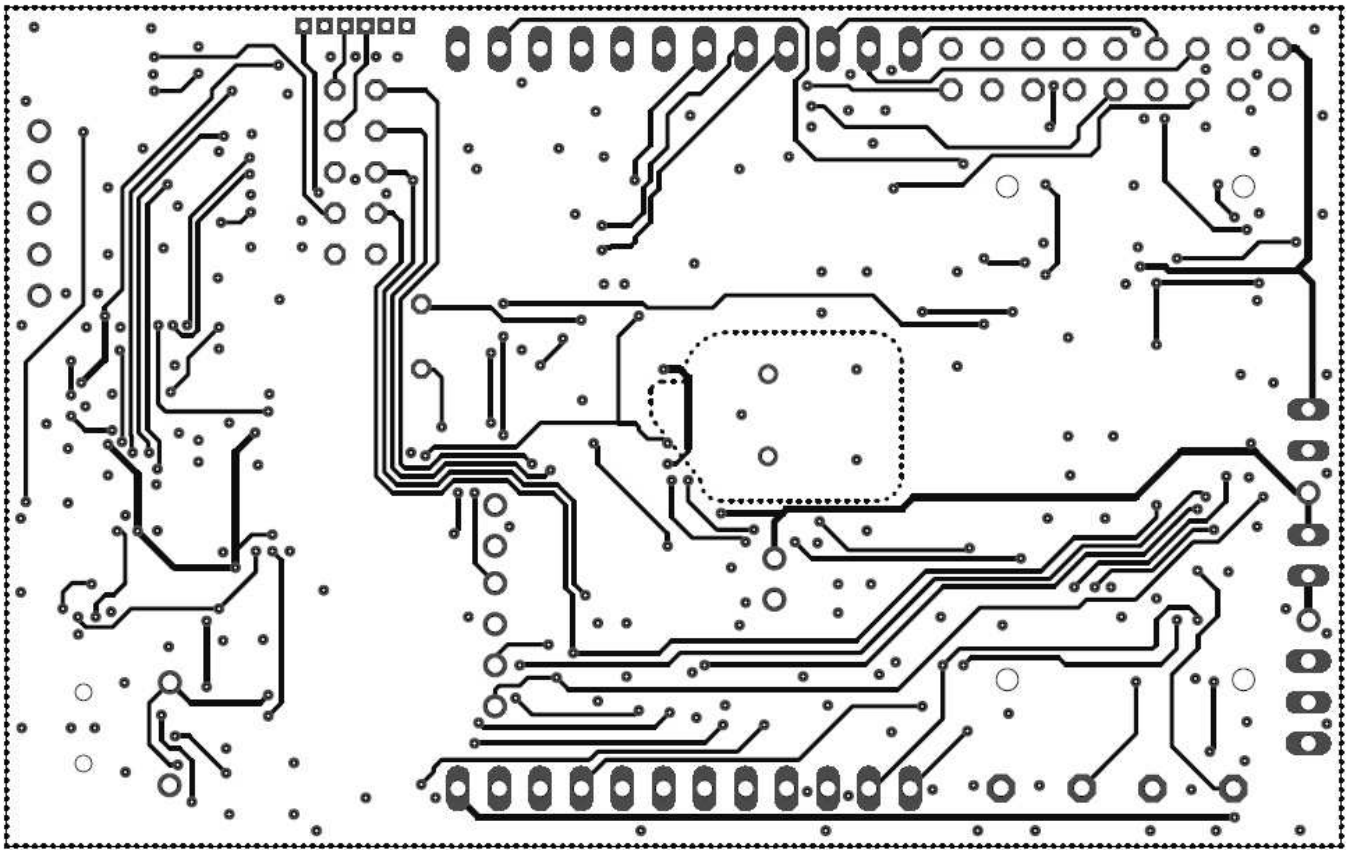


Figure 11. MSP-EXP430FR5739 Bottom Layer

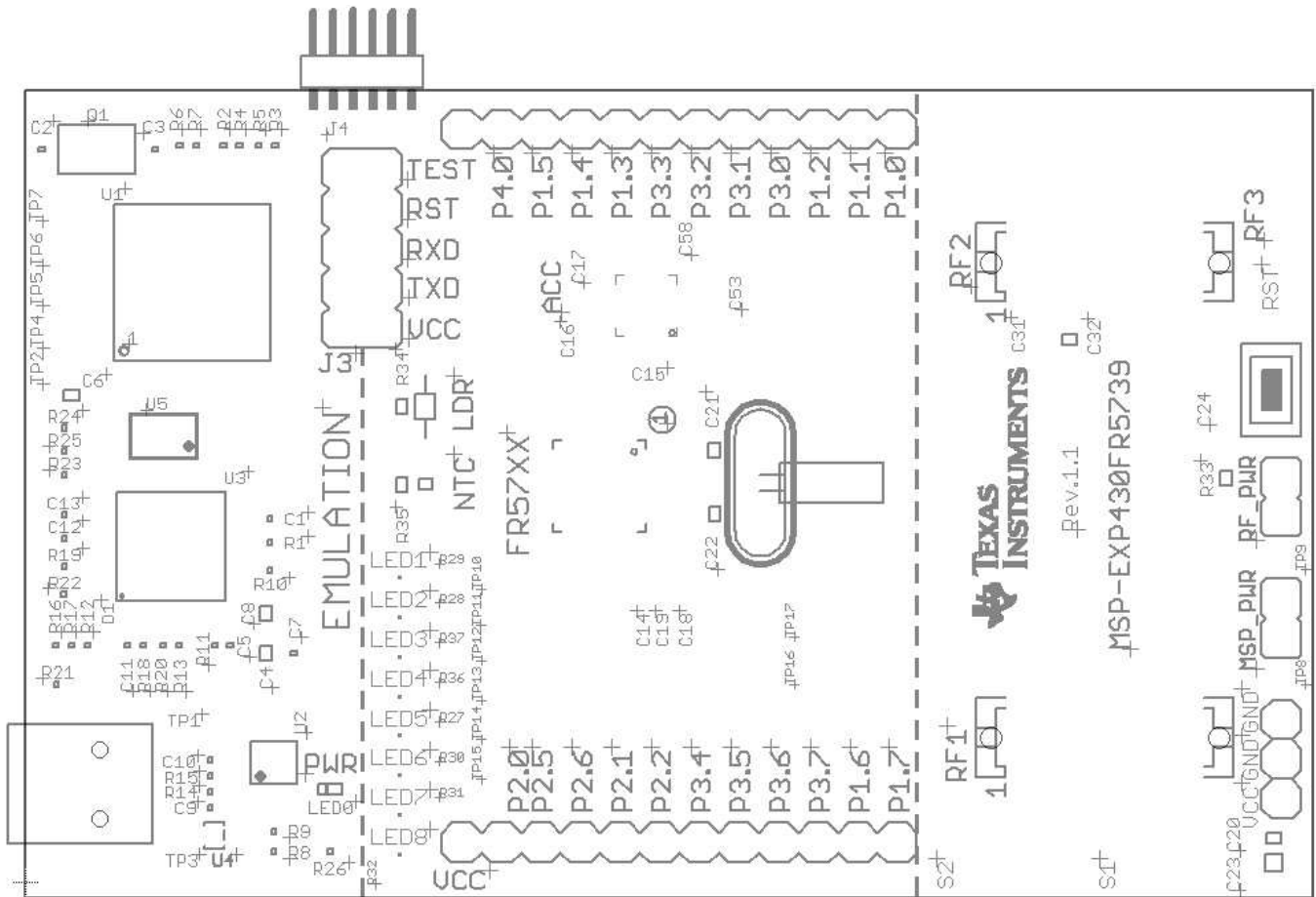


Figure 12. MSP-EXP430FR5739 Silkscreen

3.4 Bill of Materials (BOM)

Table 2 shows the bill of materials for the MSP-EXP430FR5739 board.

Table 2. Bill of Materials (BOM)

Pos.	Ref Des	Number per Board	Description
1	C1	1	10n
2	C2,C3	2	16p
3	C4, C6, C8	3	1u/6.3V
4	C5, C7, C11, C12,C13	5	100n
5	C15, C16, C17, C18, C20, C31, C58	7	100n
6	C9, C10	2	22p
7	C14	1	470n
8	C19	1	10u
9	C21, C22	0	12pF
10	C23	1	10uF/10V
11	C24	1	2.2nF
12	C32, C53	2	4.7u
13	D1	1	1N4148
14	FR5739	1	FR5739-RHA40
15	J3	1	2x05 Pin Header Male
16	J4	[1]	SL127L6TH
17	J6	1	3-pin header, male, TH
18	LDR	0	Do not populate
19	LED0	1	LED GREEN 0603
20	LED1 - LED8	8	LED BLUE 470NM 0603 SMD
21	MSP_PWR	1	2-pin header, male, TH
22	NTC	1	100k
23	Q1	1	12MHz
24	Q2	1	Crystal
25	R1, R2, R3, R16, R17, R33	4	47k
26	R4, R5, R6, R7, R23	4	100R
27	R8	1	61k5
28	R12	1	33k
29	R9	1	30K
30	R10	1	10k
31	R11	1	15k
32	R13, R24, R25	3	1k5
33	R14, R15	2	33R
34			
35	R18, R20	2	100k/1%
36	R19, R22	2	3k3
37	R21	1	33k
39	R26	1	270

Table 2. Bill of Materials (BOM) (continued)

Pos.	Ref Des	Number per Board	Description
40	R27, R28, R29, R30, R31, R32, R36, R37	8	330
41	R34	0	0R
42	R35	1	470k
43	RF1, RF2	2	
44	RF3	0	eZ-RF connector for EXP-F5438 board
45	RF_PWR	1	RF_PWR
46	S1, S2	2	
47	RST	1	
48	SV1, SV2	2+[2]	12-pin header, TH
49	U\$2	1	USB_MINI_B5
50	U1	1	F1612-PM64
51	U2	1	TPS77301DGK
52	U3	1	TUSB3410VF
53	U4	1	TPD2E001
54	U5	1	CAT24FC32UI
55	U6	1	ADXL335 accelerometer

4 Suggested Reading

The primary sources of MSP430 information are the device-specific data sheets and user's guides. The most up-to-date versions of those documents can be found at the Texas Instruments MSP430 page www.ti.com/msp430.

Visit www.ti.com/fram to find the latest information on TI's FRAM family.

To get an inside view of the CCS and IAR IDEs, download the latest version from the MSP430 page and read the included user's guides and documentation in the installation folder.

Documents describing the IAR tools (Workbench/C-SPY, the assembler, the C compiler, the linker, and the library) are located in common\doc and 430\doc. All necessary CCS documents can be found in msp430\doc inside the CCS installation path. The *Code Composer Studio v4.2 for MSP430™ User's Guide* ([SLAU157](#)) and *IAR Embedded Workbench Version 3+ for MSP430™ User's Guide* ([SLAU138](#)) include detailed information on how to set up a project for the MSP430 using CCS or IAR. They are included in most of the IDE releases and on the MSP430 page.

5 References

1. MSP430FR5739 data sheet ([SLAS639](#))
2. MSP430F2274 data sheet ([SLAS504](#))
3. *MSP430FR57xx Family User's Guide* ([SLAU272](#))

STANDARD TERMS FOR EVALUATION MODULES

1. *Delivery:* TI delivers TI evaluation boards, kits, or modules, including any accompanying demonstration software, components, and/or documentation which may be provided together or separately (collectively, an "EVM" or "EVMs") to the User ("User") in accordance with the terms set forth herein. User's acceptance of the EVM is expressly subject to the following terms.
 - 1.1 EVMs are intended solely for product or software developers for use in a research and development setting to facilitate feasibility evaluation, experimentation, or scientific analysis of TI semiconductors products. EVMs have no direct function and are not finished products. EVMs shall not be directly or indirectly assembled as a part or subassembly in any finished product. For clarification, any software or software tools provided with the EVM ("Software") shall not be subject to the terms and conditions set forth herein but rather shall be subject to the applicable terms that accompany such Software
 - 1.2 EVMs are not intended for consumer or household use. EVMs may not be sold, sublicensed, leased, rented, loaned, assigned, or otherwise distributed for commercial purposes by Users, in whole or in part, or used in any finished product or production system.
2. *Limited Warranty and Related Remedies/Disclaimers:*
 - 2.1 These terms do not apply to Software. The warranty, if any, for Software is covered in the applicable Software License Agreement.
 - 2.2 TI warrants that the TI EVM will conform to TI's published specifications for ninety (90) days after the date TI delivers such EVM to User. Notwithstanding the foregoing, TI shall not be liable for a nonconforming EVM if (a) the nonconformity was caused by neglect, misuse or mistreatment by an entity other than TI, including improper installation or testing, or for any EVMs that have been altered or modified in any way by an entity other than TI, (b) the nonconformity resulted from User's design, specifications or instructions for such EVMs or improper system design, or (c) User has not paid on time. Testing and other quality control techniques are used to the extent TI deems necessary. TI does not test all parameters of each EVM. User's claims against TI under this Section 2 are void if User fails to notify TI of any apparent defects in the EVMs within ten (10) business days after delivery, or of any hidden defects with ten (10) business days after the defect has been detected.
 - 2.3 TI's sole liability shall be at its option to repair or replace EVMs that fail to conform to the warranty set forth above, or credit User's account for such EVM. TI's liability under this warranty shall be limited to EVMs that are returned during the warranty period to the address designated by TI and that are determined by TI not to conform to such warranty. If TI elects to repair or replace such EVM, TI shall have a reasonable time to repair such EVM or provide replacements. Repaired EVMs shall be warranted for the remainder of the original warranty period. Replaced EVMs shall be warranted for a new full ninety (90) day warranty period.

WARNING

Evaluation Kits are intended solely for use by technically qualified, professional electronics experts who are familiar with the dangers and application risks associated with handling electrical mechanical components, systems, and subsystems.

User shall operate the Evaluation Kit within TI's recommended guidelines and any applicable legal or environmental requirements as well as reasonable and customary safeguards. Failure to set up and/or operate the Evaluation Kit within TI's recommended guidelines may result in personal injury or death or property damage. Proper set up entails following TI's instructions for electrical ratings of interface circuits such as input, output and electrical loads.

NOTE:

EXPOSURE TO ELECTROSTATIC DISCHARGE (ESD) MAY CAUSE DEGRADATION OR FAILURE OF THE EVALUATION KIT; TI RECOMMENDS STORAGE OF THE EVALUATION KIT IN A PROTECTIVE ESD BAG.

3 Regulatory Notices:

3.1 United States

3.1.1 Notice applicable to EVMs not FCC-Approved:

FCC NOTICE: This kit is designed to allow product developers to evaluate electronic components, circuitry, or software associated with the kit to determine whether to incorporate such items in a finished product and software developers to write software applications for use with the end product. This kit is not a finished product and when assembled may not be resold or otherwise marketed unless all required FCC equipment authorizations are first obtained. Operation is subject to the condition that this product not cause harmful interference to licensed radio stations and that this product accept harmful interference. Unless the assembled kit is designed to operate under part 15, part 18 or part 95 of this chapter, the operator of the kit must operate under the authority of an FCC license holder or must secure an experimental authorization under part 5 of this chapter.

3.1.2 For EVMs annotated as FCC – FEDERAL COMMUNICATIONS COMMISSION Part 15 Compliant:

CAUTION

This device complies with part 15 of the FCC Rules. Operation is subject to the following two conditions: (1) This device may not cause harmful interference, and (2) this device must accept any interference received, including interference that may cause undesired operation.

Changes or modifications not expressly approved by the party responsible for compliance could void the user's authority to operate the equipment.

FCC Interference Statement for Class A EVM devices

NOTE: This equipment has been tested and found to comply with the limits for a Class A digital device, pursuant to part 15 of the FCC Rules. These limits are designed to provide reasonable protection against harmful interference when the equipment is operated in a commercial environment. This equipment generates, uses, and can radiate radio frequency energy and, if not installed and used in accordance with the instruction manual, may cause harmful interference to radio communications. Operation of this equipment in a residential area is likely to cause harmful interference in which case the user will be required to correct the interference at his own expense.

FCC Interference Statement for Class B EVM devices

NOTE: This equipment has been tested and found to comply with the limits for a Class B digital device, pursuant to part 15 of the FCC Rules. These limits are designed to provide reasonable protection against harmful interference in a residential installation. This equipment generates, uses and can radiate radio frequency energy and, if not installed and used in accordance with the instructions, may cause harmful interference to radio communications. However, there is no guarantee that interference will not occur in a particular installation. If this equipment does cause harmful interference to radio or television reception, which can be determined by turning the equipment off and on, the user is encouraged to try to correct the interference by one or more of the following measures:

- Reorient or relocate the receiving antenna.
- Increase the separation between the equipment and receiver.
- Connect the equipment into an outlet on a circuit different from that to which the receiver is connected.
- Consult the dealer or an experienced radio/TV technician for help.

3.2 Canada

3.2.1 For EVMs issued with an Industry Canada Certificate of Conformance to RSS-210 or RSS-247

Concerning EVMs Including Radio Transmitters:

This device complies with Industry Canada license-exempt RSSs. Operation is subject to the following two conditions:

(1) this device may not cause interference, and (2) this device must accept any interference, including interference that may cause undesired operation of the device.

Concernant les EVMs avec appareils radio:

Le présent appareil est conforme aux CNR d'Industrie Canada applicables aux appareils radio exempts de licence. L'exploitation est autorisée aux deux conditions suivantes: (1) l'appareil ne doit pas produire de brouillage, et (2) l'utilisateur de l'appareil doit accepter tout brouillage radioélectrique subi, même si le brouillage est susceptible d'en compromettre le fonctionnement.

Concerning EVMs Including Detachable Antennas:

Under Industry Canada regulations, this radio transmitter may only operate using an antenna of a type and maximum (or lesser) gain approved for the transmitter by Industry Canada. To reduce potential radio interference to other users, the antenna type and its gain should be so chosen that the equivalent isotropically radiated power (e.i.r.p.) is not more than that necessary for successful communication. This radio transmitter has been approved by Industry Canada to operate with the antenna types listed in the user guide with the maximum permissible gain and required antenna impedance for each antenna type indicated. Antenna types not included in this list, having a gain greater than the maximum gain indicated for that type, are strictly prohibited for use with this device.

Concernant les EVMs avec antennes détachables

Conformément à la réglementation d'Industrie Canada, le présent émetteur radio peut fonctionner avec une antenne d'un type et d'un gain maximal (ou inférieur) approuvé pour l'émetteur par Industrie Canada. Dans le but de réduire les risques de brouillage radioélectrique à l'intention des autres utilisateurs, il faut choisir le type d'antenne et son gain de sorte que la puissance isotrope rayonnée équivalente (p.i.r.e.) ne dépasse pas l'intensité nécessaire à l'établissement d'une communication satisfaisante. Le présent émetteur radio a été approuvé par Industrie Canada pour fonctionner avec les types d'antenne énumérés dans le manuel d'usage et ayant un gain admissible maximal et l'impédance requise pour chaque type d'antenne. Les types d'antenne non inclus dans cette liste, ou dont le gain est supérieur au gain maximal indiqué, sont strictement interdits pour l'exploitation de l'émetteur.

3.3 Japan

3.3.1 *Notice for EVMs delivered in Japan:* Please see http://www.tij.co.jp/lstds/ti_ja/general/eStore/notice_01.page 日本国内に輸入される評価用キット、ボードについては、次のところをご覧ください。
http://www.tij.co.jp/lstds/ti_ja/general/eStore/notice_01.page

3.3.2 *Notice for Users of EVMs Considered "Radio Frequency Products" in Japan:* EVMs entering Japan may not be certified by TI as conforming to Technical Regulations of Radio Law of Japan.

If User uses EVMs in Japan, not certified to Technical Regulations of Radio Law of Japan, User is required to follow the instructions set forth by Radio Law of Japan, which includes, but is not limited to, the instructions below with respect to EVMs (which for the avoidance of doubt are stated strictly for convenience and should be verified by User):

1. Use EVMs in a shielded room or any other test facility as defined in the notification #173 issued by Ministry of Internal Affairs and Communications on March 28, 2006, based on Sub-section 1.1 of Article 6 of the Ministry's Rule for Enforcement of Radio Law of Japan,
2. Use EVMs only after User obtains the license of Test Radio Station as provided in Radio Law of Japan with respect to EVMs, or
3. Use of EVMs only after User obtains the Technical Regulations Conformity Certification as provided in Radio Law of Japan with respect to EVMs. Also, do not transfer EVMs, unless User gives the same notice above to the transferee. Please note that if User does not follow the instructions above, User will be subject to penalties of Radio Law of Japan.

【無線電波を送信する製品の開発キットをお使いになる際の注意事項】 開発キットの中には技術基準適合証明を受けていないものがあります。技術適合証明を受けていないものご使用に際しては、電波法遵守のため、以下のいずれかの措置を取っていただく必要がありますのでご注意ください。

1. 電波法施行規則第6条第1項第1号に基づく平成18年3月28日総務省告示第173号で定められた電波暗室等の試験設備でご使用いただく。
2. 実験局の免許を取得後ご使用いただく。
3. 技術基準適合証明を取得後ご使用いただく。

なお、本製品は、上記の「ご使用にあたっての注意」を譲渡先、移転先に通知しない限り、譲渡、移転できないものとします。

上記を遵守頂けない場合は、電波法の罰則が適用される可能性があることをご留意ください。日本テキサス・インスツルメンツ株式会社
東京都新宿区西新宿 6 丁目 2 4 番 1 号
西新宿三井ビル

3.3.3 *Notice for EVMs for Power Line Communication:* Please see http://www.tij.co.jp/lstds/ti_ja/general/eStore/notice_02.page
電力線搬送波通信についての開発キットをお使いになる際の注意事項については、次のところをご覧ください。http://www.tij.co.jp/lstds/ti_ja/general/eStore/notice_02.page

3.4 European Union

3.4.1 *For EVMs subject to EU Directive 2014/30/EU (Electromagnetic Compatibility Directive):*

This is a class A product intended for use in environments other than domestic environments that are connected to a low-voltage power-supply network that supplies buildings used for domestic purposes. In a domestic environment this product may cause radio interference in which case the user may be required to take adequate measures.

-
4. *EVM Use Restrictions and Warnings:*
 - 4.1 EVMS ARE NOT FOR USE IN FUNCTIONAL SAFETY AND/OR SAFETY CRITICAL EVALUATIONS, INCLUDING BUT NOT LIMITED TO EVALUATIONS OF LIFE SUPPORT APPLICATIONS.
 - 4.2 User must read and apply the user guide and other available documentation provided by TI regarding the EVM prior to handling or using the EVM, including without limitation any warning or restriction notices. The notices contain important safety information related to, for example, temperatures and voltages.
 - 4.3 *Safety-Related Warnings and Restrictions:*
 - 4.3.1 User shall operate the EVM within TI's recommended specifications and environmental considerations stated in the user guide, other available documentation provided by TI, and any other applicable requirements and employ reasonable and customary safeguards. Exceeding the specified performance ratings and specifications (including but not limited to input and output voltage, current, power, and environmental ranges) for the EVM may cause personal injury or death, or property damage. If there are questions concerning performance ratings and specifications, User should contact a TI field representative prior to connecting interface electronics including input power and intended loads. Any loads applied outside of the specified output range may also result in unintended and/or inaccurate operation and/or possible permanent damage to the EVM and/or interface electronics. Please consult the EVM user guide prior to connecting any load to the EVM output. If there is uncertainty as to the load specification, please contact a TI field representative. During normal operation, even with the inputs and outputs kept within the specified allowable ranges, some circuit components may have elevated case temperatures. These components include but are not limited to linear regulators, switching transistors, pass transistors, current sense resistors, and heat sinks, which can be identified using the information in the associated documentation. When working with the EVM, please be aware that the EVM may become very warm.
 - 4.3.2 EVMs are intended solely for use by technically qualified, professional electronics experts who are familiar with the dangers and application risks associated with handling electrical mechanical components, systems, and subsystems. User assumes all responsibility and liability for proper and safe handling and use of the EVM by User or its employees, affiliates, contractors or designees. User assumes all responsibility and liability to ensure that any interfaces (electronic and/or mechanical) between the EVM and any human body are designed with suitable isolation and means to safely limit accessible leakage currents to minimize the risk of electrical shock hazard. User assumes all responsibility and liability for any improper or unsafe handling or use of the EVM by User or its employees, affiliates, contractors or designees.
 - 4.4 User assumes all responsibility and liability to determine whether the EVM is subject to any applicable international, federal, state, or local laws and regulations related to User's handling and use of the EVM and, if applicable, User assumes all responsibility and liability for compliance in all respects with such laws and regulations. User assumes all responsibility and liability for proper disposal and recycling of the EVM consistent with all applicable international, federal, state, and local requirements.
 5. *Accuracy of Information:* To the extent TI provides information on the availability and function of EVMs, TI attempts to be as accurate as possible. However, TI does not warrant the accuracy of EVM descriptions, EVM availability or other information on its websites as accurate, complete, reliable, current, or error-free.
 6. *Disclaimers:*
 - 6.1 EXCEPT AS SET FORTH ABOVE, EVMS AND ANY MATERIALS PROVIDED WITH THE EVM (INCLUDING, BUT NOT LIMITED TO, REFERENCE DESIGNS AND THE DESIGN OF THE EVM ITSELF) ARE PROVIDED "AS IS" AND "WITH ALL FAULTS." TI DISCLAIMS ALL OTHER WARRANTIES, EXPRESS OR IMPLIED, REGARDING SUCH ITEMS, INCLUDING BUT NOT LIMITED TO ANY EPIDEMIC FAILURE WARRANTY OR IMPLIED WARRANTIES OF MERCHANTABILITY OR FITNESS FOR A PARTICULAR PURPOSE OR NON-INFRINGEMENT OF ANY THIRD PARTY PATENTS, COPYRIGHTS, TRADE SECRETS OR OTHER INTELLECTUAL PROPERTY RIGHTS.
 - 6.2 EXCEPT FOR THE LIMITED RIGHT TO USE THE EVM SET FORTH HEREIN, NOTHING IN THESE TERMS SHALL BE CONSTRUED AS GRANTING OR CONFERRING ANY RIGHTS BY LICENSE, PATENT, OR ANY OTHER INDUSTRIAL OR INTELLECTUAL PROPERTY RIGHT OF TI, ITS SUPPLIERS/LICENSORS OR ANY OTHER THIRD PARTY, TO USE THE EVM IN ANY FINISHED END-USER OR READY-TO-USE FINAL PRODUCT, OR FOR ANY INVENTION, DISCOVERY OR IMPROVEMENT, REGARDLESS OF WHEN MADE, CONCEIVED OR ACQUIRED.
 7. *USER'S INDEMNITY OBLIGATIONS AND REPRESENTATIONS.* USER WILL DEFEND, INDEMNIFY AND HOLD TI, ITS LICENSORS AND THEIR REPRESENTATIVES HARMLESS FROM AND AGAINST ANY AND ALL CLAIMS, DAMAGES, LOSSES, EXPENSES, COSTS AND LIABILITIES (COLLECTIVELY, "CLAIMS") ARISING OUT OF OR IN CONNECTION WITH ANY HANDLING OR USE OF THE EVM THAT IS NOT IN ACCORDANCE WITH THESE TERMS. THIS OBLIGATION SHALL APPLY WHETHER CLAIMS ARISE UNDER STATUTE, REGULATION, OR THE LAW OF TORT, CONTRACT OR ANY OTHER LEGAL THEORY, AND EVEN IF THE EVM FAILS TO PERFORM AS DESCRIBED OR EXPECTED.

8. *Limitations on Damages and Liability:*

8.1 *General Limitations.* IN NO EVENT SHALL TI BE LIABLE FOR ANY SPECIAL, COLLATERAL, INDIRECT, PUNITIVE, INCIDENTAL, CONSEQUENTIAL, OR EXEMPLARY DAMAGES IN CONNECTION WITH OR ARISING OUT OF THESE TERMS OR THE USE OF THE EVMS , REGARDLESS OF WHETHER TI HAS BEEN ADVISED OF THE POSSIBILITY OF SUCH DAMAGES. EXCLUDED DAMAGES INCLUDE, BUT ARE NOT LIMITED TO, COST OF REMOVAL OR REINSTALLATION, ANCILLARY COSTS TO THE PROCUREMENT OF SUBSTITUTE GOODS OR SERVICES, RETESTING, OUTSIDE COMPUTER TIME, LABOR COSTS, LOSS OF GOODWILL, LOSS OF PROFITS, LOSS OF SAVINGS, LOSS OF USE, LOSS OF DATA, OR BUSINESS INTERRUPTION. NO CLAIM, SUIT OR ACTION SHALL BE BROUGHT AGAINST TI MORE THAN TWELVE (12) MONTHS AFTER THE EVENT THAT GAVE RISE TO THE CAUSE OF ACTION HAS OCCURRED.

8.2 *Specific Limitations.* IN NO EVENT SHALL TI'S AGGREGATE LIABILITY FROM ANY USE OF AN EVM PROVIDED HEREUNDER, INCLUDING FROM ANY WARRANTY, INDEMNITY OR OTHER OBLIGATION ARISING OUT OF OR IN CONNECTION WITH THESE TERMS, , EXCEED THE TOTAL AMOUNT PAID TO TI BY USER FOR THE PARTICULAR EVM(S) AT ISSUE DURING THE PRIOR TWELVE (12) MONTHS WITH RESPECT TO WHICH LOSSES OR DAMAGES ARE CLAIMED. THE EXISTENCE OF MORE THAN ONE CLAIM SHALL NOT ENLARGE OR EXTEND THIS LIMIT.

9. *Return Policy.* Except as otherwise provided, TI does not offer any refunds, returns, or exchanges. Furthermore, no return of EVM(s) will be accepted if the package has been opened and no return of the EVM(s) will be accepted if they are damaged or otherwise not in a resalable condition. If User feels it has been incorrectly charged for the EVM(s) it ordered or that delivery violates the applicable order, User should contact TI. All refunds will be made in full within thirty (30) working days from the return of the components(s), excluding any postage or packaging costs.

10. *Governing Law:* These terms and conditions shall be governed by and interpreted in accordance with the laws of the State of Texas, without reference to conflict-of-laws principles. User agrees that non-exclusive jurisdiction for any dispute arising out of or relating to these terms and conditions lies within courts located in the State of Texas and consents to venue in Dallas County, Texas. Notwithstanding the foregoing, any judgment may be enforced in any United States or foreign court, and TI may seek injunctive relief in any United States or foreign court.

Mailing Address: Texas Instruments, Post Office Box 655303, Dallas, Texas 75265
Copyright © 2019, Texas Instruments Incorporated

IMPORTANT NOTICE AND DISCLAIMER

TI PROVIDES TECHNICAL AND RELIABILITY DATA (INCLUDING DATASHEETS), DESIGN RESOURCES (INCLUDING REFERENCE DESIGNS), APPLICATION OR OTHER DESIGN ADVICE, WEB TOOLS, SAFETY INFORMATION, AND OTHER RESOURCES "AS IS" AND WITH ALL FAULTS, AND DISCLAIMS ALL WARRANTIES, EXPRESS AND IMPLIED, INCLUDING WITHOUT LIMITATION ANY IMPLIED WARRANTIES OF MERCHANTABILITY, FITNESS FOR A PARTICULAR PURPOSE OR NON-INFRINGEMENT OF THIRD PARTY INTELLECTUAL PROPERTY RIGHTS.

These resources are intended for skilled developers designing with TI products. You are solely responsible for (1) selecting the appropriate TI products for your application, (2) designing, validating and testing your application, and (3) ensuring your application meets applicable standards, and any other safety, security, or other requirements. These resources are subject to change without notice. TI grants you permission to use these resources only for development of an application that uses the TI products described in the resource. Other reproduction and display of these resources is prohibited. No license is granted to any other TI intellectual property right or to any third party intellectual property right. TI disclaims responsibility for, and you will fully indemnify TI and its representatives against, any claims, damages, costs, losses, and liabilities arising out of your use of these resources.

TI's products are provided subject to TI's Terms of Sale (www.ti.com/legal/termsofsale.html) or other applicable terms available either on ti.com or provided in conjunction with such TI products. TI's provision of these resources does not expand or otherwise alter TI's applicable warranties or warranty disclaimers for TI products.

Mailing Address: Texas Instruments, Post Office Box 655303, Dallas, Texas 75265
Copyright © 2019, Texas Instruments Incorporated