

TI Designs: TIDA-01350 高速线性跨阻放大器参考设计



说明

此跨阻放大器设计是一款高速线性二级跨阻放大器 (TIA) 应用，采用 LMH5401 全差动放大器 (FDA)。参考设计中包括具有集成式光纤尾纤的光电二极管。此随附的光电二极管可视为近乎理想的电流源，从而支持进行轻松测试。

资源

TIDA-01350	设计文件夹
LMH5401	产品文件夹
TINA-TI™	工具文件夹

特性

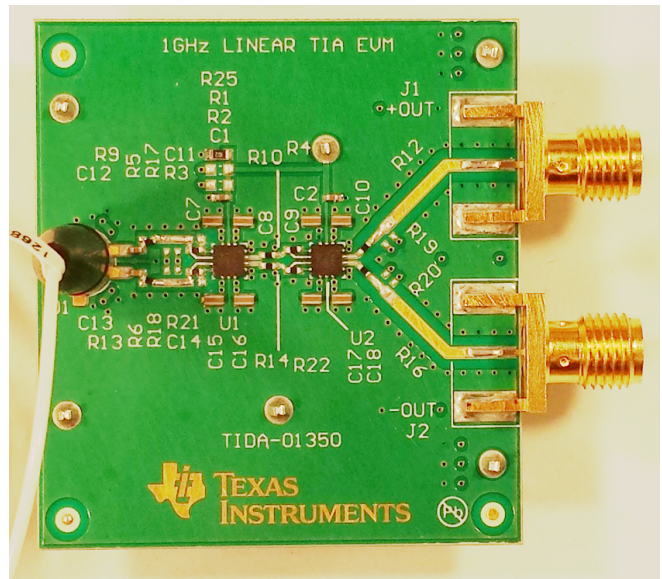
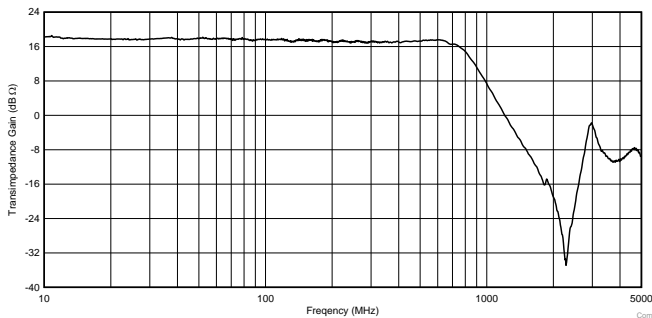
- 带宽大于 500MHz
- 转换电流到电压
- 包含光电二极管
- 二级增益增加

应用

- [线性光学接收器](#)
- [机器视觉](#)
- [接近检测器](#)



咨询我们的 E2E 专家



该 TI 参考设计末尾的重要声明表述了授权使用、知识产权问题和其他重要的免责声明和信息。

1 System Description

The TIDA-01350 TI Design is a fixed-gain, high-bandwidth, fully-differential, current-to-voltage conversion circuit designed for high-speed applications. This reference design includes the full optical-to-electrical conversion gain circuit, including two stages of electrical gain for improved sensitivity and bandwidth.

Optical proximity detectors use a photodiode receiver to measure the return time of an optical pulse. The TIDA-01350 has a very-high-speed response and the sufficient level of sensitivity required to measure a reflected light pulse.

Machine vision applications, such as linear measurement or edge detection, require high-speed optical power measurements. The TIDA-01350 enables high-speed optical power detection.

Multi-bit modulation patterns such as PAM-4 or QPSK require receiver circuits with a linear response. The TIDA-01350 has very-high-fidelity linearity performance, which allows high-order modulation schemes that enable more data to be sent in the same bandwidth.

1.1 Key System Specifications

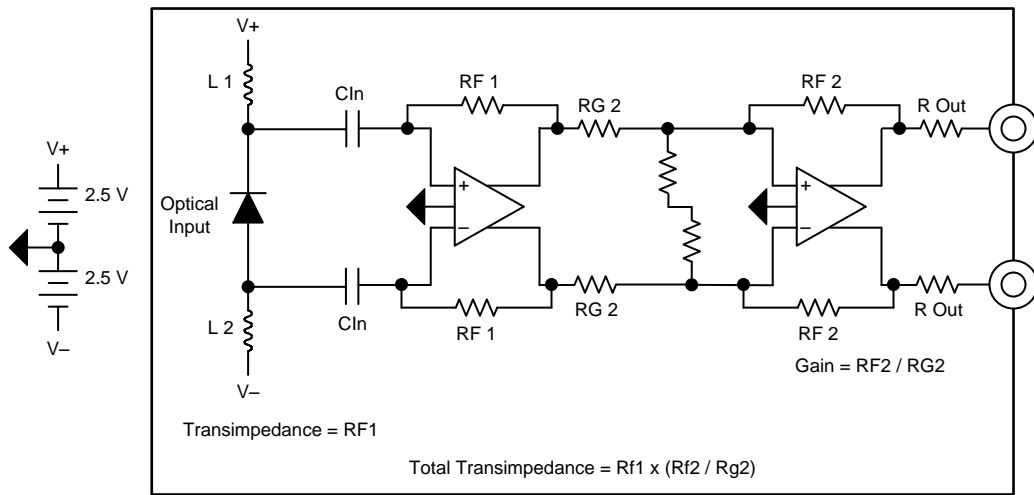
表 1. Key System Specifications

PARAMETER	SPECIFICATIONS
Supply voltage	5- V external supply
Current-to-voltage gain	500 Ω to 10000 Ω
Differential-output common-mode voltage	0 V
Target bandwidth	> 500 MHz
Onboard photo diode	AC Photonics PTD0075A2211
Fiber connector	FC/APC

2 System Overview

2.1 Block Diagram

图 1 shows a block diagram of the system. The main portion of the design is two fully-differential amplifiers (FDAs). An onboard photo diode is provided to facilitate high-speed testing. The board is populated for a transimpedance of 10000 Ω by default.



Copyright © 2017, Texas Instruments Incorporated

图 1. System Block Diagram

2.2 Highlighted Products

2.2.1 THS4131

The TIDA-01350 design features the [LMH5401](#) fully differential amplifier (FDA).

The LMH5401 is a very-high-performance differential amplifier optimized for radio frequency (RF), intermediate frequency (IF), or high-speed, DC-coupled, time-domain applications. The device is ideal for DC- or AC-coupled applications that may require a single-ended-to-differential (SE-DE) conversion when driving an analog-to-digital converter (ADC). The LMH5401 generates very low levels of second- and third-order distortion when operating in SE-DE or differential-to-differential (DE-DE) mode.

The amplifier is optimized for use in both SE-DE and DE-DE systems. The device has unprecedented usable bandwidth from DC to 2 GHz. The LMH5401 can be used for SE-DE conversions in the signal chain without external baluns in a wide range of applications such as test and measurement, broadband communications, and high-speed data acquisition. [图 2](#) shows the LMH5401 block diagram.

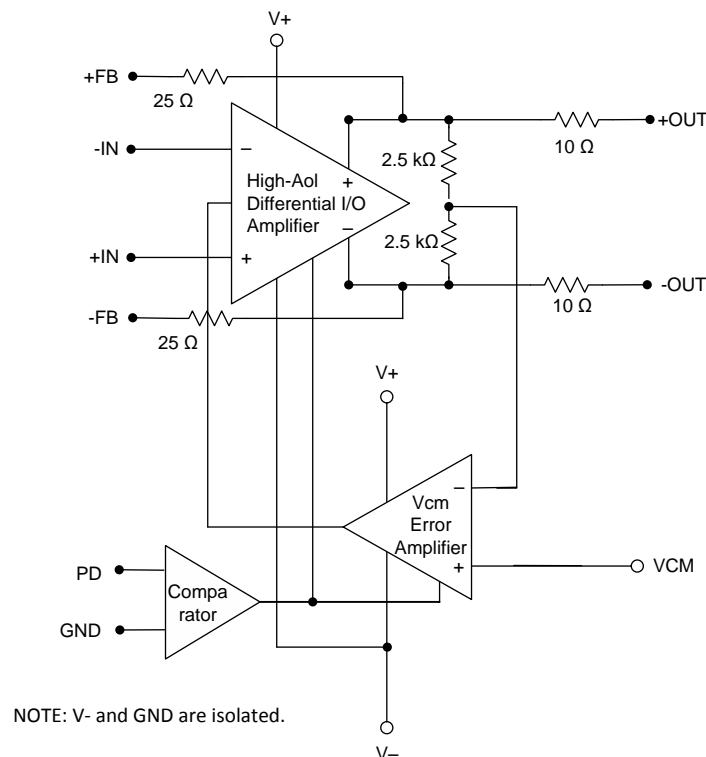
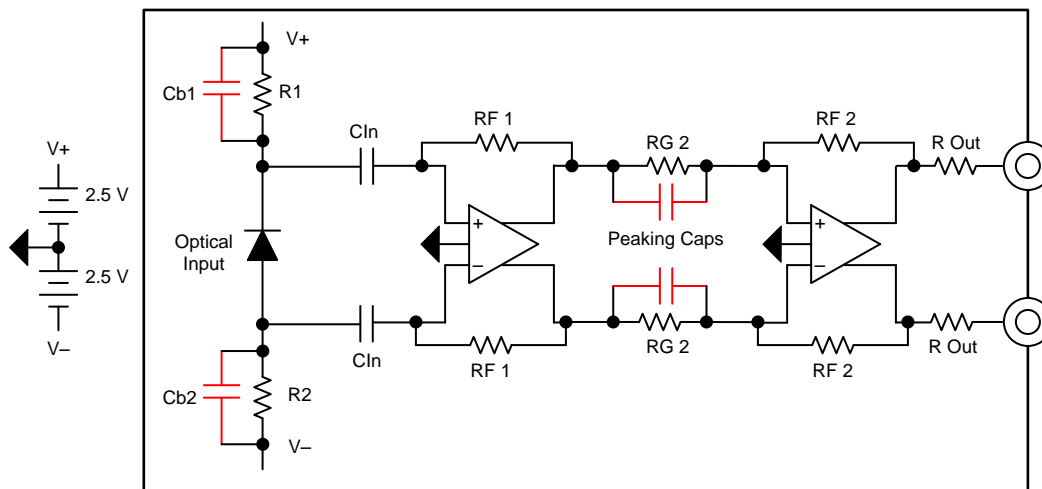


图 2. LMH5401 Functional Block Diagram

2.3 System Design Theory

The TIDA-01350 is a linear, high-speed transimpedance amplifier (TIA) reference design. 图 3 shows the system block diagram. TIAs are very sensitive to input diode capacitance. As diode capacitance increases, the bandwidth of the circuit decreases. In the same manner, increasing the value of the feedback resistor decreases the bandwidth of the amplifier. Weighing both the required gain and bandwidth is very important because there is a gain bandwidth relationship in TIAs. Two stages are used in this reference design to achieve high gain as well as high bandwidth.

The other key component of the reference design is the photo diode. The PTD0075A2211 diode has been chosen for two primary specifications. The first key specification is the junction capacitance of 0.6 pF and the second key specification is the reverse bias voltage of 5 V. The 5-V bias voltage is chosen to keep the system design very simple because the amplifiers and the diode operate from the same supply voltage. The diode is specified for a 1550-nm optical wavelength but it operates very well at the 1310-nm test frequency, as well. The sensitivity of the diode is 0.9 A/W, which means for every watt of illumination power the diode allows 0.9 A of current to flow. This design has been tested at power levels of 5 mW and below.



Copyright © 2017, Texas Instruments Incorporated

图 3. Frequency Shaping Components Shown in Red

3 Design Options

3.1 Diode Bias

There are two ways to apply the bias voltage to the photo diode. This first option is the use of inductors. The benefit of inductors is that the voltage applied to the diode is independent of the diode current. The drawback of using bias inductors is that inductors short out low-frequency optical currents. Inductors are also more expensive than resistors, which are the other option for diode bias.

In [图 1](#), inductors L1 and L2 are used to provide reverse bias to the photo diode. The diode used in TIDA-01350 is designed for a 5-V bias voltage, which is also the recommended supply voltage for the LMH5401 amplifier, so the bias inductors connect to the same supplies that are used for the amplifiers. Key parameters to consider when choosing the bias inductors are the inductance, parasitic capacitance, and series resistance. This design uses 1- μ H inductors, which provide a good balance of high impedance at low frequencies while maintaining low parasitic resistance. A larger value inductor improves the low-frequency response.

The photo diode can also be biased with resistors, as the previous [图 3](#) shows. If resistors are desired for providing the diode bias, make sure that the diode DC current does not reduce the DC bias voltage to the point that the diode performance suffers. Note that the diode junction capacitance increases as the bias voltage on the diode decreases. This increase in diode junction capacitance causes a decrease in system bandwidth.

Given a diode sensitivity of 0.9 A/W and an average illumination power of 1 mW, the average diode current is 0.9 mA. With two 1-k bias resistors, the diode bias voltage is reduced by $2 \times (0.0009 \times 1000) = 1.8 \text{ V}$, which leaves a bias voltage of $5 \text{ V} - 1.8 \text{ V} = 3.2 \text{ V}$.

Even though many electrical signals are zero-referenced, it is rare for optical signals to be fully modulated. Typically, a modulated optical signal only has modulation which is specified as an extinction ratio (ER). The ER is defined as the ratio of the one power to the zero power and is usually specified in dB. For example, if the one power is 1 mW and the zero power is 0.5 mw, the ER is $10 \times \log(1 / 0.5) = 3.0 \text{ dB}$. A fully-modulated signal where the zero level is 0 mW would have an infinite ER.

The standing bias current required by the photo diode is determined by both the modulation current and the ER of the diode. The current consumed by the diode in the zero logic state is basically waste current. When using inductive bias, this waste current does not dissipate nearly as much power. In contrast, when using a resistive bias, the waste current contributes to voltage loss in the bias resistors. Using small-value bias resistors keeps this loss low, but then the signal current is diverted from the TIA and into the bias resistors. This dilemma makes selection of the bias resistor value difficult. A high-value resistor is desired for maximum system gain, so if possible, use a high ER modulator for the signal source.

3.2 AC Coupling and Stability

The capacitors labeled CIn are required to isolate the bias voltage from the amplifier inputs. These capacitors are not optional if a reverse-biased diode is used. While it is possible to use a photo diode with no reverse bias, that application is not addressed in this reference design.

TIA's can be unstable when the input capacitance is too large. Place capacitors in parallel with the feedback resistors to stabilize the circuit. These capacitors are shown as CF1. These resistors are not required for the chosen photo diode, as discovered during characterization of the circuit.

The second-stage amplifier is a voltage amplifier. The LMH5401 device is specified for a minimum stable gain of 3 V/V. The unmarked resistors at the input of stage 2 are used to add gain to stage 2 for stability. These resistors are not required for any of the configurations detailed in this reference design.

节 5.1.1 provides further detail on the capacitors labeled as Cb1, Cb2, and Peaking Caps.

4 Getting Started Hardware

The performance of the TIDA-01350 has been evaluated using TINA-TI™ simulation software as well as in the lab using an optical-to-electrical vector network analyzer. 图 4 shows the hardware setup diagram for evaluating the reference design frequency response. The optical unit is capable of -2-dBm to 5-dBm laser power. Use optical attenuators to test smaller input signals and reduce the optical power to the desired level.

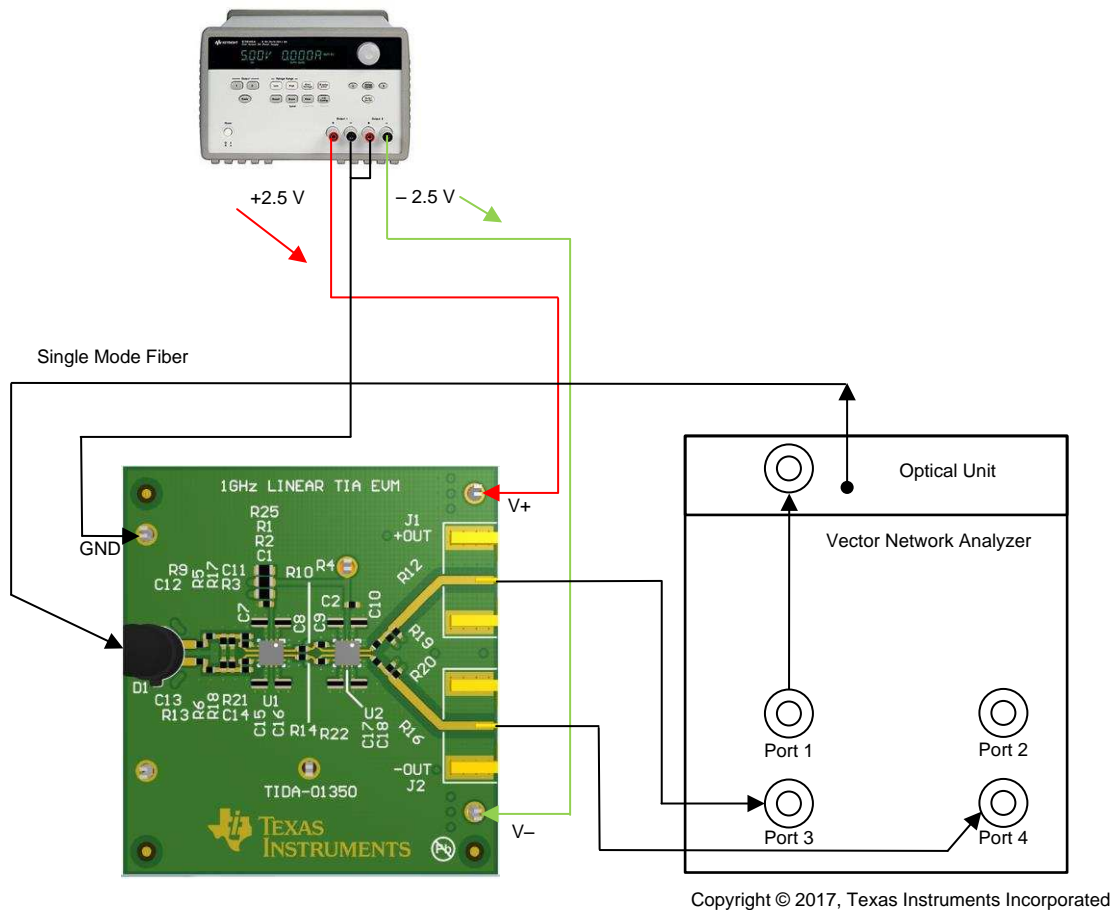


图 4. Hardware Setup Diagram

4.1 Applying Power and Basic Setup

The following subsections cover the two main test configurations for the TIDA-01350 reference design. The first configuration is for frequency response (see 图 4). The second configuration is for time domain testing (see 图 9).

4.1.1 Board Power Supply Setup

The TIDA-01350 reference design supports a supply voltage range of 4.5 V to 5.25 V. The recommended supply voltages are +2.5 V and -2.5 V with the output common-mode voltages set to 0 V. The setup procedure is as follows:

1. With the supplies disconnected, set the voltage on the DC power supply (capable of sourcing 300-mA current) between 4.5 V to 5.25 V. Also, set the current compliance limit to approximately 200 mA on the DC power supply.
2. Keeping the supplies turned OFF, connect the positive supply lead of the DC power supply to the red V+ test point.
3. Connect the negative power supply lead to the yellow V- test point.
4. When using split-supply supplies, connect the black GND connector to the supply common. When using single supplies, connect the black GND connector to V-.
5. When using single supplies, the Vcm pin must be set to an appropriate voltage as detailed in 4.2 节. See *LMH5401 8-GHz, Low-Noise, Low-Power, Fully-Differential Amplifier* (SBOS710) for the voltage limits of this pin.
6. Enable the power supplies. The supply current must be approximately 120 mA.

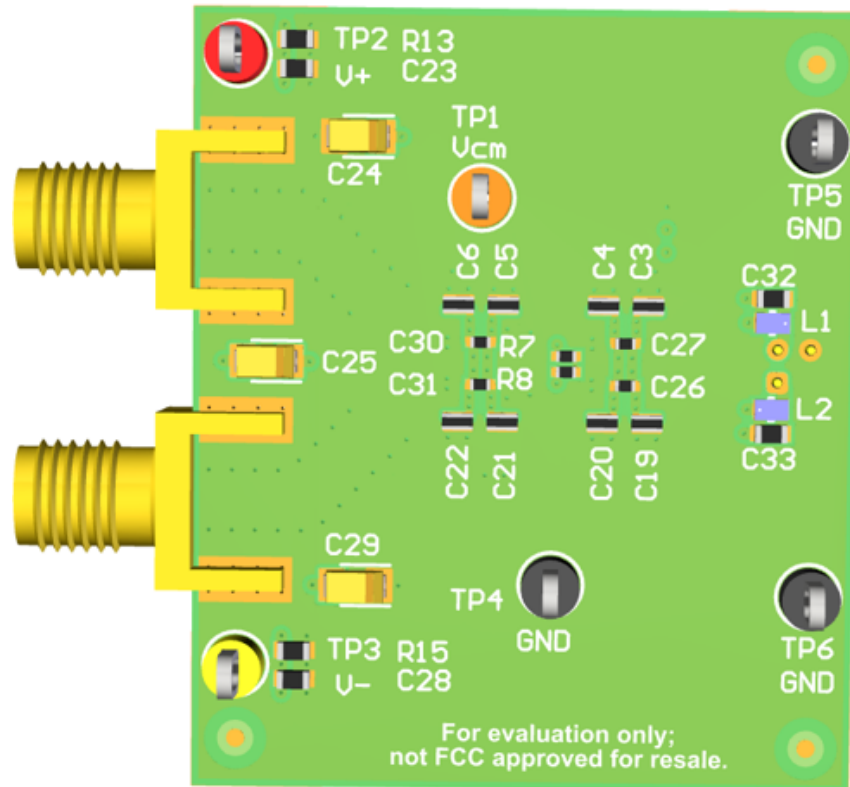


图 5. Board Layout Bottom Showing Supply Connections

4.1.2 Connecting Optical Input

1. Make sure the optical source is disabled.
2. The photodiode has an attached fiber optic cable with an angled physical contact (APC) connector. APC connectors are typically green in color. Check the owner's manual to determine what kind of connector the test equipment uses by default.
3. Connect the diode optical fiber to the optical source.
4. Enable the optical source.

4.1.3 Connecting AC Test Equipment

1. The +OUT and –OUT connectors (J1 and J2) are 50-Ω SMA connectors. Use a 50-Ω cable to connect these two connectors to test equipment that supports differential signaling, or use math as detailed in the following steps to extract the proper signal.
2. For differential signal measurement, an oscilloscope should be set to CHA – CHB to show a differential signal when +OUT and –OUT are connected to CHA and CHB, respectively.
3. For common-mode signal measurement, an oscilloscope should be set to (CHA + CHB) / 2 to show a differential signal when +OUT and –OUT are connected to CHA and CHB, respectively.

4.2 Output Common-Mode Voltage Option

The LMH5401 amplifier features an output common-mode control pin. This pin allows a small amount of voltage adjustment in the amplifier output common-mode voltage ($V_{ocm} = (+OUT - -OUT) / 2$). For small output voltage levels ($2 V_{pp}$ or lower), the amplifier output common-mode can be offset from mid supply by 0.5 V. For large output signals, the amplifier output common-mode must be set exactly to mid supply.

By default, the TIDA-01350 board has a 1-kΩ resistor from the Vcm test point to ground. This configuration is appropriate for split supplies that are symmetrical about ground. All testing for this design guide has been performed using split 2.5-V power supplies and $V_{ocm} = 0$ V.

Two options are available for single supplies or for supply voltages that are not symmetrical. The first option is to connect a bench power supply with the desired Vcm voltage to the Vcm test point. With a 1-kΩ resistor to ground, it is very easy to overdrive this pin to the desired voltage with no changes to the board. The second option is to remove R14 and use resistors R1 and R2 to set a voltage divider to set the proper Vcm voltage using the existing supplies. This option does not require an additional bench supply, but does require board modifications.

5 Testing and Results

5.1 Frequency Response

图 4 details the setup procedure for frequency response testing. 图 6 shows the frequency response for several input optical power levels. This graph covers signals from -2 dBm to -27 dBm. The ER is approximately 5 dB.

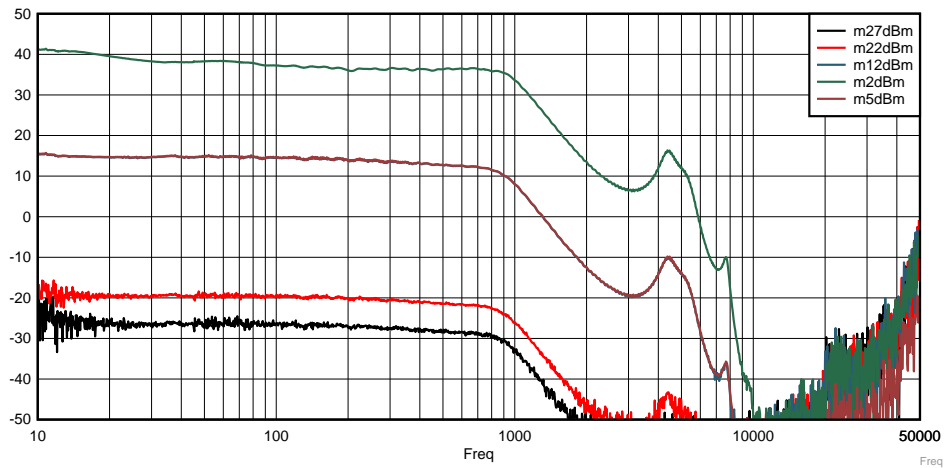


图 6. Optical Input Frequency Response

Note that in 图 6 the gain shown includes losses in the optical modulator, so the gain is not directly correlated to the board gain. 表 2 lists the calculations for board gain.

5.1.1 Shaping Frequency Response

The addition of a few components enables the user to shape the frequency response to eliminate the gradual amplitude loss shown in the previous 5.1 节. The response in 图 7 is flat out to 600 MHz. 图 8 shows the additional components used to generate this frequency response. The trade-off for the increased flat-band response is a faster drop of amplitude above the flat-band frequency.

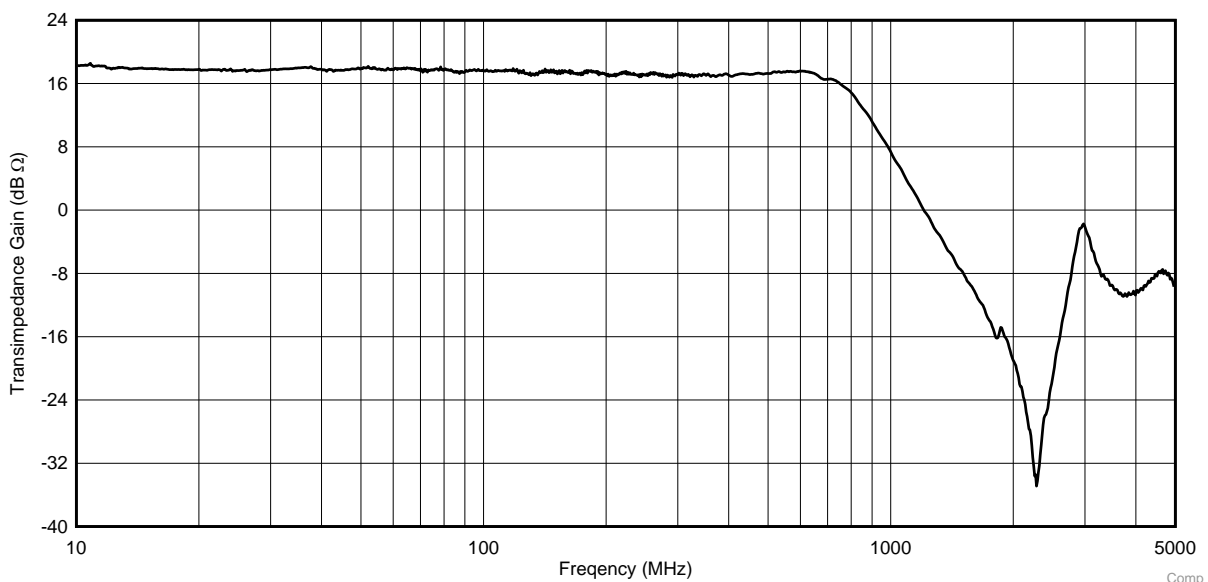
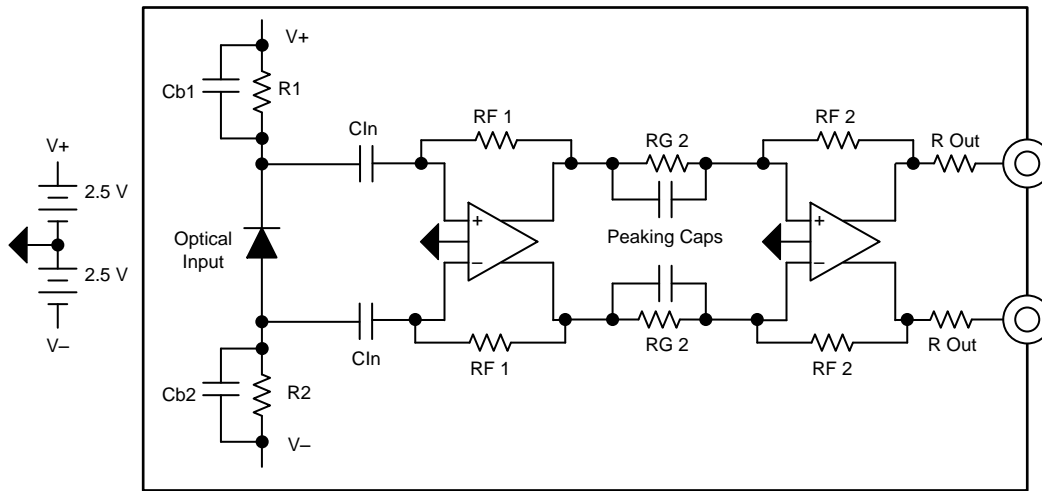


图 7. Frequency Response With Frequency Shaping

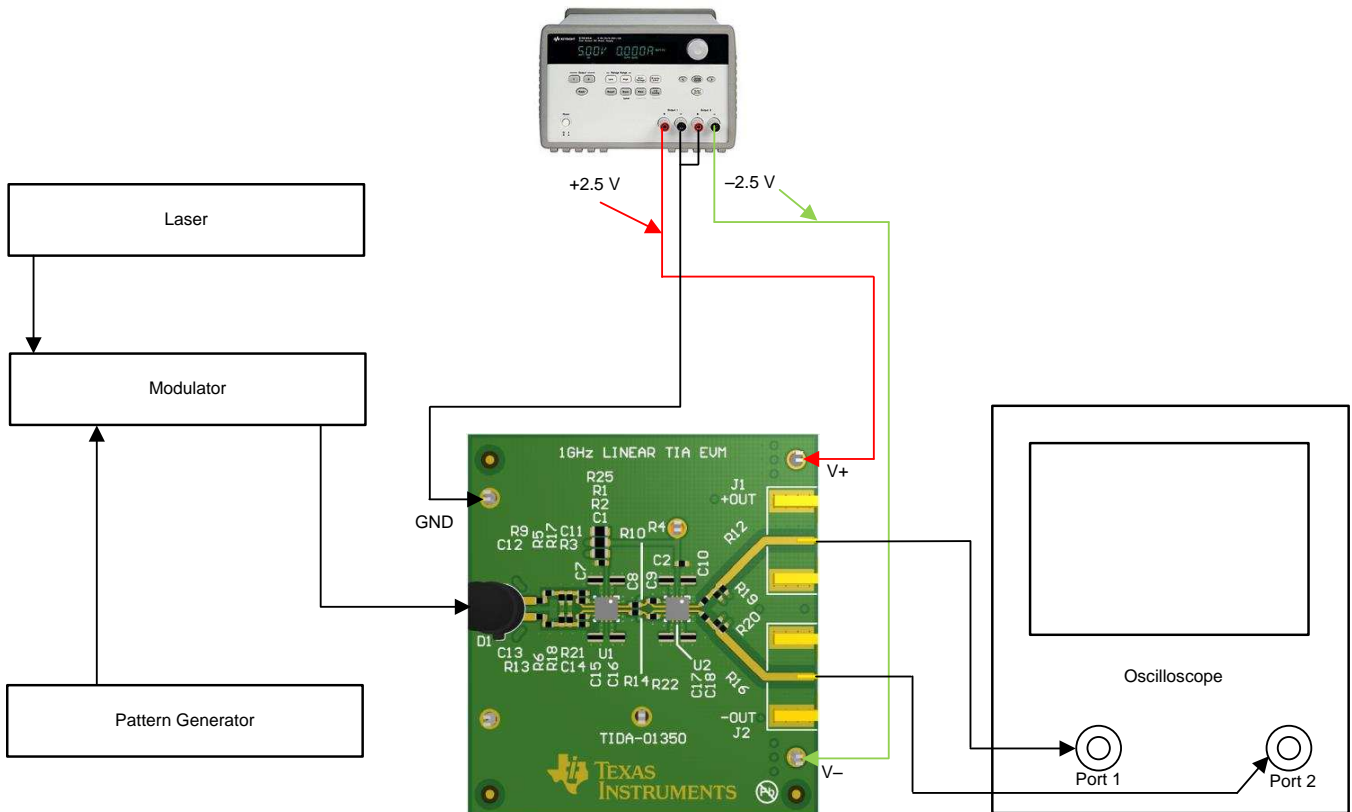


Copyright © 2017, Texas Instruments Incorporated

图 8. Schematic Showing Frequency-Shaping Capacitors

5.2 Digital Data Testing

图 9 shows the hardware configuration for the digital data testing.



Copyright © 2017, Texas Instruments Incorporated

图 9. Test Setup for Digital Testing

图 10 和 图 11 显示时域测量的结果。

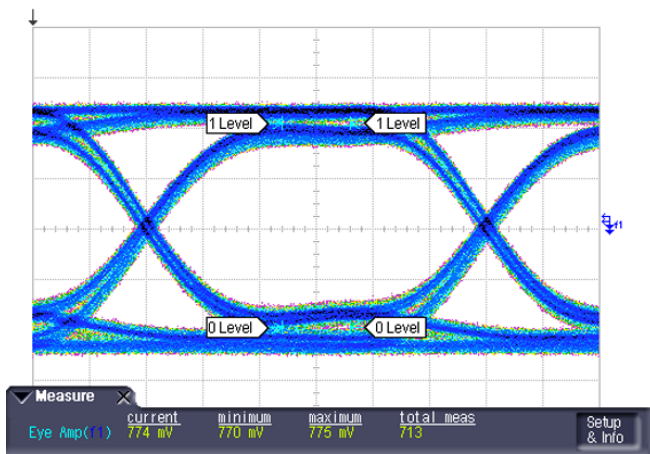


图 10. Small Signal Response: f = 700 MHz

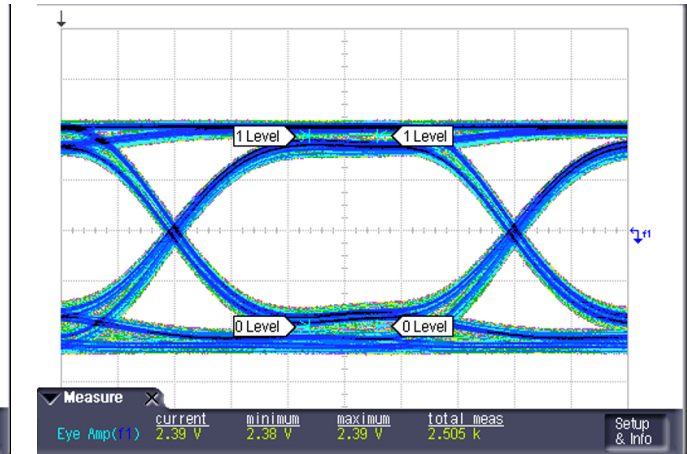


图 11. Large Signal Response: f = 700 MHz

5.3 Overall Transimpedance Gain

For high-speed circuits, the capacitance of the photo diode together with the gain of the amplifier limits the bandwidth. Reducing the diode capacitance increases bandwidth and reducing the TIA gain also increases bandwidth. Obtaining the desired bandwidth in one stage may not be possible for a given diode and gain. The TIDA-01350 reference design uses two stages of LMH5401 amplifiers to achieve bandwidths approaching 1 GHz along with transimpedances of 1 k Ω or higher. 表 2 lists the component selections for a variety of gain configurations. Note the 10 Ω in the interstage and output termination resistor columns. This occurrence is to indicate that there is an addition to the Ω of resistance internal to the LMH5410 device. This resistance must be included in the gain calculations.

表 2. Transimpedance Gain for Various Resistor Values⁽¹⁾

STAGE 1 FEEDBACK RESISTORS	INTERSTAGE RESISTANCE	STAGE 2 FEEDBACK RESISTORS	OUTPUT TERMINATION RESISTORS	TOTAL SYSTEM TRANSIMPEDANCE GAIN
499 Ω	24.9 Ω + 10 Ω	499 V	40 Ω + 10 Ω	3567 Ω
300 Ω	24.9 Ω + 10 Ω	499 V	40 Ω + 10 Ω	2144 Ω
300 Ω	24.9 Ω + 10 Ω	300 V	40 Ω + 10 Ω	1289 Ω
200 Ω	24.9 Ω + 10 Ω	300 V	40 Ω + 10 Ω	859 Ω

⁽¹⁾ Transimpedance gain = $RF1 \times (RF2 / RG2) / 2$

图 12 shows the relationship between gain and bandwidth. Similarly, 图 13 shows the gain for both a single-stage- and two-stage circuit. The performance gained by using two stages is clear.

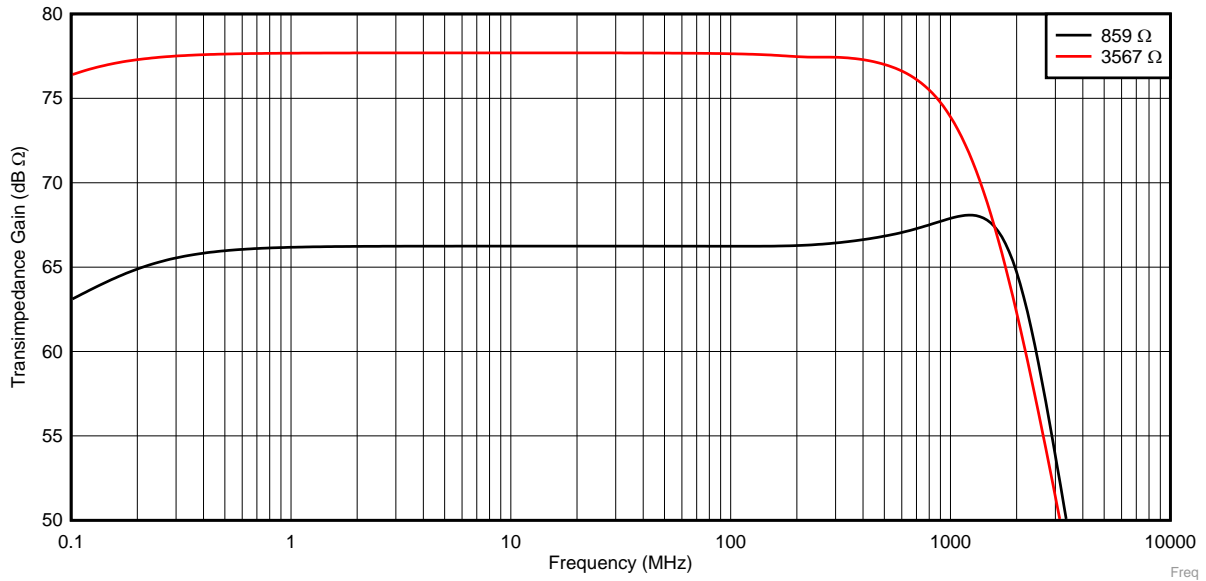


图 12. Bandwidth versus Gain for 3567 Ω and 859 Ω

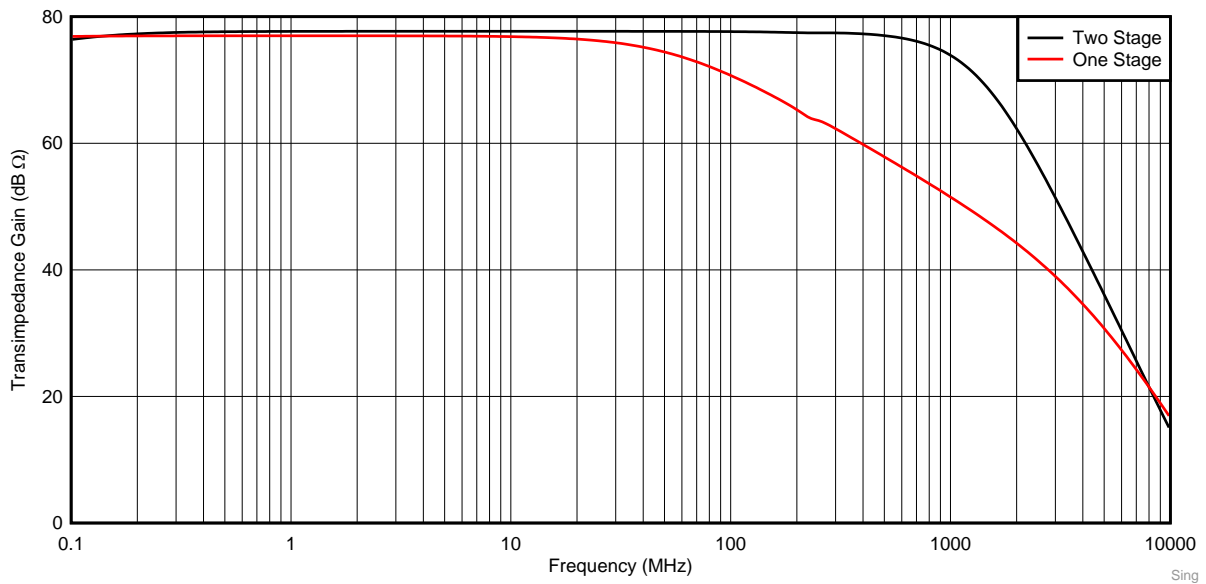


图 13. Bandwidth One Stage versus Two Stage

5.4 Noise

表 3 lists the primary amplifier noise terms. See *Analysis of fully differential amplifiers* for a full explanation of amplifier error terms. For this reference design, the noise of the first stage is amplified by the second stage, so the first stage noise dominates. Using a 500-Ω feedback resistor for the first stage, the voltage noise and current noise are both significant. The voltage noise is 1.25 nV/√Hz and the current noise multiplied by the transimpedance gain is 1.75 nV/√Hz. These two noise sources are uncorrelated, so add in a root sum of squares (RSS) manner. The RSS sum of these sources are, in turn, added to the second-stage noise terms. Unlike the first stage, where the voltage and current noise are both significant, only the voltage noise is significant in the second stage. As it turns out, the total system noise is significantly higher than the amplifier contributions. 图 14 shows the output noise for two different diode bias circuits.

表 3. Input Referred Error Terms

PARAMETER	VOLTAGE NOISE	CURRENT NOISE
Stage 1 input noise	1.25 nV/√Hz	3.5 pA/√Hz
Stage 1 output noise, R _{F1} = 499	1.25 nV/√Hz	3.5 pA/√Hz × 500 = 1.75 nV/√Hz
Stage 2 input noise (at 100 MHz)	2.66 nV/√Hz	3.5 pA/√Hz × (500 34.9) = 0.122 nV/√Hz
Stage 2 output noise R _{F2} = 499, R _{G2} = 34.9	19 nV/√Hz	—

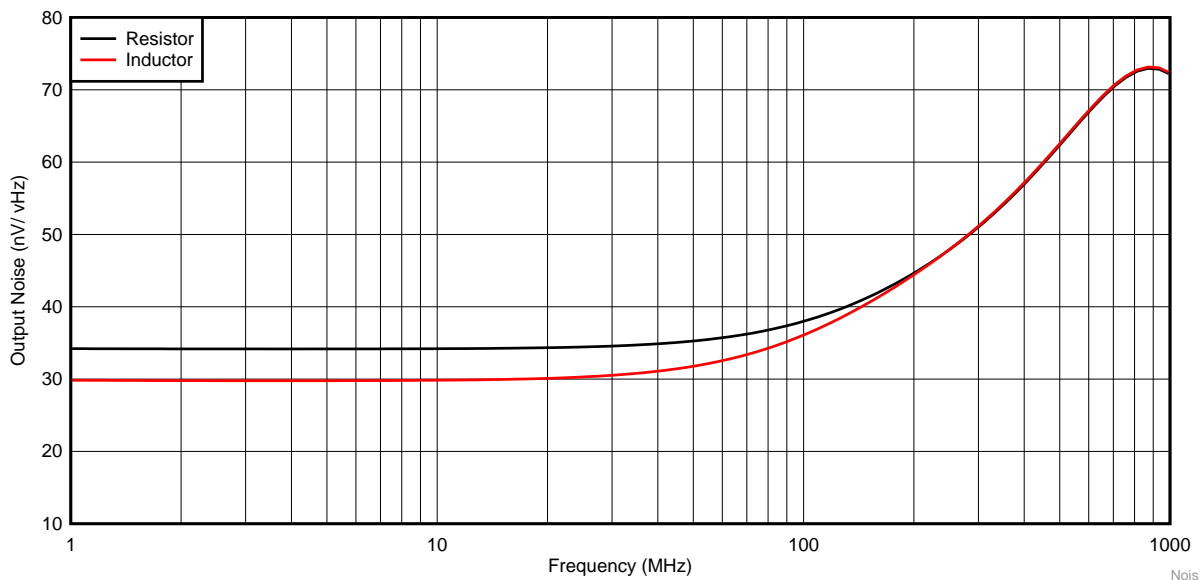


图 14. Output Referred Noise

The graph of output voltage noise in 图 14 shows curves for both inductive bias and resistive bias (1-kΩ resistors) circuits. As expected, the inductive bias provides slightly lower noise because an inductor is ideally noiseless. The reason that the curves converge at higher frequencies is due to the amplifier voltage noise and the diode capacitance. 公式 1 shows the equation for the amplifier noise gain. Notice that the amplifier noise gain is a function of the input capacitance, the feedback resistor, and frequency. What is unique for a TIA is that there is no R_G or gain set resistor, which is a key attribute of the TIA applications. At higher frequencies, the amplifier noise gain grows larger; and so at high frequencies, this noise term dominates the other terms. The rolloff in noise that starts at 900 MHz is due to the frequency-shaping capacitors C_{b1} and C_{b2}.

$$\sqrt{1 + (2\pi f \times C_{IN} \times R_f)^2} \tag{1}$$

One important thing to note about high-frequency circuits is that there are no ideal components. As previously noted, there is no discrete or schematic value for R_G . Employing a careful PCB design to minimize parasitic resistance is essential to obtaining a reasonably accurate value for R_G . This task is especially important at high frequencies because of the RF skin effect, which causes resistance of circuit components to increase with increasing frequency. Likewise, the parasitic capacitance and inductance of the circuit elements can be large enough to cause performance changes. For example, this reference design does not use a feedback capacitor; however, the capacitance of the PCB traces is enough to provide sufficient capacitance on the feedback resistor to ensure stability. Due to this reason, [公式 1](#) is only accurate at frequencies up to approximately 1.5 GHz.

6 Design Files

6.1 Schematics

To download the schematics, see the design files at [TIDA-01350](#).

6.2 Bill of Materials

To download the bill of materials (BOM), see the design files at [TIDA-01350](#).

6.3 PCB Layout Recommendations

6.3.1 Layout Prints

To download the layer plots, see the design files at [TIDA-01350](#).

6.4 Altium Project

To download the Altium project files, see the design files at [TIDA-01350](#).

6.5 Layout Guidelines

图 15 shows the layout guidelines for this reference design. The design features a six-layer board with a Rogers RO4350 dielectric under the top layer. Note that the signal path is confined to the top layer. The other layers of the printed-circuit board (PCB) use standard FR406 dielectric. The other layers include ground and power planes. To maximize the interplane capacitance, the positive and negative power supply planes are adjacent on layers 3 and 4, respectively. The overall stack up is: Signal, Ground, V+, V-, Ground, and back.

See the layout section in *LMH5401 8-GHz, Low-Noise, Low-Power, Fully-Differential Amplifier* for layout guidelines related to the LMH5401.

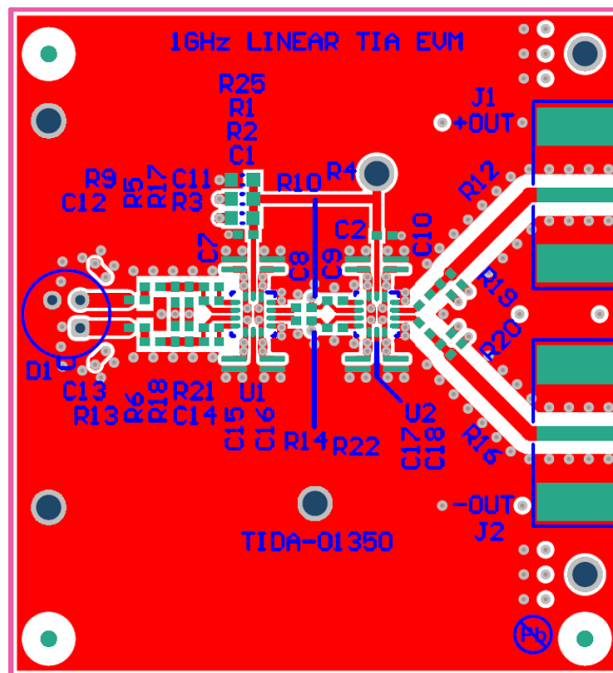


图 15. Example Layout (Top Layer)

6.6 Gerber Files

To download the Gerber files, see the design files at [TIDA-01350](#).

6.7 Assembly Drawings

To download the assembly drawings, see the design files at [TIDA-01350](#).

7 Related Documentation

1. Texas Instruments, [LMH5401 8-GHz, Low-Noise, Low-Power, Fully-Differential Amplifier](#),
2. Texas Instruments, [Analysis of fully differential amplifiers](#)
3. Texas Instruments, [Op amp stability and input capacitance](#)

7.1 商标

TINA-TI is a trademark of Texas Instruments.

All other trademarks are the property of their respective owners.

8 About the Author

LOREN SIEBERT is an applications engineer with TI in the High-Speed Amplifier division in Fort Collins, Colorado. He supports high speed amplifier applications ranging from 4G and 5G radio base stations to Optical Networking.

有关 TI 设计信息和资源的重要通知

德州仪器 (TI) 公司提供的技术、应用或其他设计建议、服务或信息，包括但不限于与评估模块有关的参考设计和材料（总称“TI 资源”），旨在帮助设计人员开发整合了 TI 产品的应用；如果您（个人，或如果是代表贵公司，则为贵公司）以任何方式下载、访问或使用了任何特定的 TI 资源，即表示贵方同意仅为该等目标，按照本通知的条款进行使用。

TI 所提供的 TI 资源，并未扩大或以其他方式修改 TI 对 TI 产品的公开适用的质保及质保免责声明；也未导致 TI 承担任何额外的义务或责任。TI 有权对其 TI 资源进行纠正、增强、改进和其他修改。

您理解并同意，在设计应用时应自行实施独立的分析、评价和判断，且应全权负责并确保应用的安全性，以及您的应用（包括应用中使用的 TI 产品）应符合所有适用的法律法规及其他相关要求。就您的应用声明，您具备制订和实施下列保障措施所需的一切必要专业知识，能够 (1) 预见故障的危险后果，(2) 监视故障及其后果，以及 (3) 降低可能导致危险的故障几率并采取适当措施。您同意，在使用或分发包含 TI 产品的任何应用前，您将彻底测试该等应用和该等应用所用 TI 产品的功能而设计。除特定 TI 资源的公开文档中明确列出的测试外，TI 未进行任何其他测试。

您只有在为开发包含该等 TI 资源所列 TI 产品的应用时，才被授权使用、复制和修改任何相关单项 TI 资源。但并未依据禁止反言原则或其他法律授予您任何 TI 知识产权的任何其他明示或默示的许可，也未授予您 TI 或第三方的任何技术或知识产权的许可，该等许可包括但不限于任何专利权、版权、屏蔽作品权或与使用 TI 产品或服务的任何整合、机器制作、流程相关的其他知识产权。涉及或参考了第三方产品或服务的信息不构成使用此类产品或服务的许可或与其相关的保证或认可。使用 TI 资源可能需要您向第三方获得对该等第三方专利或其他知识产权的许可。

TI 资源系“按原样”提供。TI 兹免除对 TI 资源及其使用作出所有其他明确或默示的保证或陈述，包括但不限于对准确性或完整性、产权保证、无复发故障保证，以及适销性、适合特定用途和不侵犯任何第三方知识产权的任何默认保证。

TI 不负责任何申索，包括但不限于因组合产品所致或与之有关的申索，也不为您辩护或赔偿，即使该等产品组合已列于 TI 资源或其他地方。对因 TI 资源或其使用引起或与之有关的任何实际的、直接的、特殊的、附带的、间接的、惩罚性的、偶发的、从属或惩戒性损害赔偿，不管 TI 是否获悉可能会产生上述损害赔偿，TI 概不负责。

您同意向 TI 及其代表全额赔偿因您不遵守本通知条款和条件而引起的任何损害、费用、损失和/或责任。

本通知适用于 TI 资源。另有其他条款适用于某些类型的材料、TI 产品和服务的使用和采购。这些条款包括但不限于适用于 TI 的半导体产品 (<http://www.ti.com/sc/docs/stdterms.htm>)、[评估模块](http://www.ti.com/sc/docs/sampters.htm)和样品 (<http://www.ti.com/sc/docs/sampters.htm>) 的标准条款。

邮寄地址：上海市浦东新区世纪大道 1568 号中建大厦 32 楼，邮政编码：200122
Copyright © 2018 德州仪器半导体技术（上海）有限公司