

LM5113-Q1 汽车 90V、1.2A/5A 半桥 GaN 驱动器

1 特性

- 符合汽车应用 标准
- 具有符合 AEC-Q100 标准的下列特性：
 - 器件温度 1 级：-40°C 至 125°C 的环境工作温度范围
 - 器件 HBM ESD 分类等级 1C
 - 器件带电器件模型 (CDM) ESD 分类等级 C6
- 独立的高侧和低侧 TTL 逻辑输入
- 1.2A 峰值拉电流能力，5A 峰值灌电流能力
- 高侧浮动偏置电压轨
工作电压高达 100VDC
- 内部自举电源电压钳位
- 分离输出实现可调的
开通和关断应力
- 0.6Ω 下拉电阻，2.1Ω 上拉电阻
- 快速传播时间（典型值为 28ns）
- 优异的传播延迟
（典型值为 1.5ns）
- 电源轨欠压锁定
- 低功耗

2 应用

- 移动无线充电器
- 音频功率放大器
- 音频电源
- 电流馈入型推挽式转换器
- 半桥和全桥转换器
- 同步降压转换器

3 说明

LM5113-Q1 专为同时驱动采用同步降压、升压或半桥配置的高侧和低侧增强模式氮化镓 (GaN) FET 或硅质 MOSFET 而设计，适用于汽车 应用。此器件具有一个集成于内部的 100V 自举二极管，还为高侧和低侧输出分别提供了独立的输入，可实现最大程度的灵活控制。高侧偏置电压在内部被钳位为 5.2V，可防止栅极电压超过增强模式 GaN FET 的最大栅极/源极电压额定值。器件的输入与 TTL 逻辑兼容，无论 VDD 电压多高，它都能够承受高达 14V 的输入电压。LM5113-Q1 具有分栅输出的能力，可独立灵活地调节开通和关断强度。

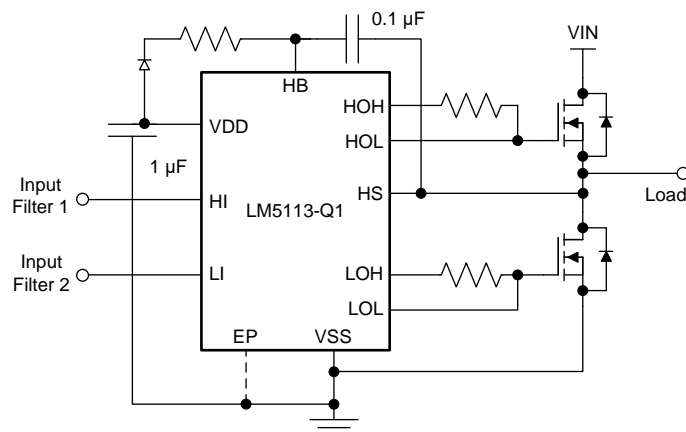
此外，LM5113-Q1 具有非常可靠的灌电流能力，使栅极保持低电平，从而防止开关操作期间发生误导通。LM5113-Q1 的工作频率最高可达数 MHz。LM5113-Q1 采用带有裸露焊盘的标准 10 引脚 WSON 封装，可改善功耗。

器件信息⁽¹⁾

器件型号	封装	封装尺寸（标称值）
LM5113-Q1	WSON (10)	4.00mm x 4.00mm

(1) 如需了解所有可用封装，请参阅数据表末尾的可订购产品附录。

简化应用示意图



Copyright © 2017, Texas Instruments Incorporated



目录

1	特性	1	7.4	Device Functional Modes.....	13
2	应用	1	8	Application and Implementation	14
3	说明	1	8.1	Application Information.....	14
4	修订历史记录	2	8.2	Typical Application	15
5	Pin Configuration and Functions	3	9	Power Supply Recommendations	19
6	Specifications.....	4	10	Layout.....	20
6.1	Absolute Maximum Ratings	4	10.1	Layout Guidelines	20
6.2	ESD Ratings	4	10.2	Layout Example	20
6.3	Recommended Operating Conditions.....	4	11	器件和文档支持	21
6.4	Thermal Information	4	11.1	文档支持	21
6.5	Electrical Characteristics	5	11.2	接收文档更新通知	21
6.6	Switching Characteristics	6	11.3	社区资源	21
6.7	Typical Characteristics	8	11.4	商标	21
7	Detailed Description	11	11.5	静电放电警告	21
7.1	Overview	11	11.6	Glossary	21
7.2	Functional Block Diagram	11	12	机械、封装和可订购信息	21
7.3	Feature Description.....	11			

4 修订历史记录

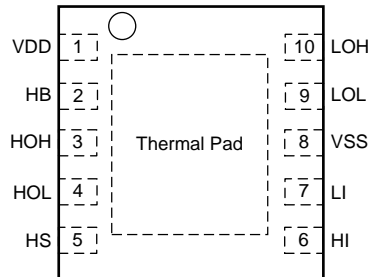
注：之前版本的页码可能与当前版本有所不同。

Changes from Revision A (November 2017) to Revision B	Page
• 将数据表标题从“LM5113-Q1 汽车 90V、1.2A/5A 半桥 GaN 驱动器”更改成了“LM5113-Q1 汽车 90V、1.2A/5A 半桥 GaN 驱动器”	1
• 在简化应用图 中添加了输入滤波器	1
• Added EXT HI and EXT LO references to the <i>Functional Block Diagram</i>	11
• Changed the last paragraph and add new images to the <i>Input and Output</i> section	11

Changes from Original (March 2017) to Revision A	Page
• 将数据表标题从“LM5113-Q1 汽车 80V、1.2A/5A 半桥 GaN 驱动器”更改成了“LM5113-Q1 汽车 90V、1.2A/5A 半桥 GaN 驱动器”	1
• 更改了简化应用图表	1
• Changed the <i>Functional Block Diagram</i>	11
• Added content to the <i>Input and Output</i> section	11
• Added content to the <i>Start-up and UVLO</i> section	12

5 Pin Configuration and Functions

**DPR Package
10-Pin WSON With Exposed Thermal Pad
Top View**



Pin Functions

PIN		TYPE ⁽¹⁾	DESCRIPTION
NO.	NAME		
1	VDD	P	5-V positive gate drive supply: locally decouple to VSS using low-ESR/ESL capacitor located as close as possible to the IC.
2	HB	P	High-side gate driver bootstrap rail: connect the positive terminal of the bootstrap capacitor to HB and the negative terminal to HS. The bootstrap capacitor must be placed as close to the IC as possible.
3	HOH	O	High-side gate driver turnon output: connect to the gate of high-side GaN FET with a short, low inductance path. A gate resistor can be used to adjust the turnon speed.
4	HOL	O	High-side gate driver turnoff output: connect to the gate of high-side GaN FET with a short, low inductance path. A gate resistor can be used to adjust the turnoff speed.
5	HS	P	High-side GaN FET source connection: connect to the bootstrap capacitor negative terminal and the source of the high-side GaN FET.
6	HI	I	High-side driver control input. The LM5113-Q1 inputs have TTL type thresholds. Unused inputs must be tied to ground and not left open.
7	LI	I	Low-side driver control input. The LM5113-Q1 inputs have TTL type thresholds. Unused inputs must be tied to ground and not left open.
8	VSS	G	Ground return: all signals are referenced to this ground.
9	LOL	O	Low-side gate driver sink-current output: connect to the gate of the low-side GaN FET with a short, low inductance path. A gate resistor can be used to adjust the turnoff speed.
10	LOH	O	Low-side gate driver source-current output: connect to the gate of high-side GaN FET with a short, low inductance path. A gate resistor can be used to adjust the turnon speed.
EP	—	—	Exposed pad: TI recommends that the exposed pad on the bottom of the package be soldered to ground plane on the printed-circuit board to aid thermal dissipation.

(1) I = Input, O = Output, G = Ground, P = Power

6 Specifications

6.1 Absolute Maximum Ratings

over operating free-air temperature range (unless otherwise noted)⁽¹⁾

	MIN	MAX	UNIT
VDD to VSS	−0.3	7	V
HB to HS	−0.3	7	V
LI or HI input	−0.3	15	V
LOH, LOL output	−0.3	VDD + 0.3	V
HOH, HOL output	$V_{HS} - 0.3$	$V_{HB} + 0.3$	V
HS to VSS	−5	93	V
HB to VSS	0	100	V
Operating junction temperature		150	°C
Storage temperature, T_{stg}	−55	150	°C

- (1) Stresses beyond those listed under *Absolute Maximum Ratings* may cause permanent damage to the device. These are stress ratings only, which do not imply functional operation of the device at these or any other conditions beyond those indicated under *Recommended Operating Conditions*. Exposure to absolute-maximum-rated conditions for extended periods may affect device reliability.

6.2 ESD Ratings

		VALUE	UNIT
$V_{(ESD)}$ Electrostatic discharge	Human-body model (HBM), per AEC Q100-002 ⁽¹⁾	±1000	V
	Charged-device model (CDM), per AEC Q100-011	±1500	

- (1) AEC Q100-002 indicates that HBM stressing shall be in accordance with the ANSI/ESDA/JEDEC JS-001 specification.

6.3 Recommended Operating Conditions

over operating free-air temperature range (unless otherwise noted)

	MIN	NOM	MAX	UNIT
VDD	4.5		5.5	V
LI or HI input	0		14	V
HS	−5		90	V
HB	$V_{HS} + 4$		$V_{HS} + 5.5$	V
HS slew rate			50	V/ns
Operating junction temperature	−40		125	°C

6.4 Thermal Information

THERMAL METRIC ⁽¹⁾		LM5113-Q1	UNIT
		DPR (WSN)	
		10 PINS	
$R_{\theta JA}$	Junction-to-ambient thermal resistance	37.5	°C/W
$R_{\theta JC(top)}$	Junction-to-case (top) thermal resistance	35.8	°C/W
$R_{\theta JB}$	Junction-to-board thermal resistance	14.7	°C/W
Ψ_{JT}	Junction-to-top characterization parameter	0.3	°C/W
Ψ_{JB}	Junction-to-board characterization parameter	14.9	°C/W
$R_{\theta JC(bot)}$	Junction-to-case (bottom) thermal resistance	4.1	°C/W

- (1) For more information about traditional and new thermal metrics, see the [Semiconductor and IC Package Thermal Metrics](#) application report.

6.5 Electrical Characteristics

Specifications are $T_J = 25^\circ\text{C}$. Unless otherwise specified: $V_{DD} = V_{HB} = 5\text{ V}$, $V_{SS} = V_{HS} = 0\text{ V}$.
No load on LOL and HOL or HOH and HOL⁽¹⁾.

PARAMETER		TEST CONDITIONS		MIN	TYP	MAX	UNIT
SUPPLY CURRENTS							
I _{DD}	VDD quiescent current	LI = HI = 0 V	T _J = 25°C	0.07		mA	
			T _J = −40°C to 125°C	0.1			
I _{DDO}	VDD operating current	f = 500 kHz	T _J = 25°C	2		mA	
			T _J = −40°C to 125°C	3			
I _{HB}	Total HB quiescent current	LI = HI = 0 V	T _J = 25°C	0.08		mA	
			T _J = −40°C to 125°C	0.1			
I _{HBO}	Total HB operating current	f = 500 kHz	T _J = 25°C	1.5		mA	
			T _J = −40°C to 125°C	2.5			
I _{HBS}	HB to VSS quiescent current	HS = HB = 90 V	T _J = 25°C	0.1		μA	
			T _J = −40°C to 125°C	10			
I _{HBSO}	HB to VSS operating current	f = 500 kHz	T _J = 25°C	0.4		mA	
			T _J = −40°C to 125°C	1			
INPUT PINS							
V _{IR}	Input voltage threshold	Rising edge	T _J = 25°C	2.06		V	
			T _J = −40°C to 125°C	1.89	2.18		
V _{IF}	Input voltage threshold	Falling edge	T _J = 25°C	1.66		V	
			T _J = −40°C to 125°C	1.48	1.76		
V _{IHYS}	Input voltage hysteresis			400		mV	
R _I	Input pulldown resistance	T _J = 25°C		200		kΩ	
		T _J = −40°C to 125°C	100	300			
UNDERVOLTAGE PROTECTION							
V _{DDR}	VDD rising threshold	T _J = 25°C		3.8		V	
		T _J = −40°C to 125°C	3.2	4.5			
V _{DDH}	VDD threshold hysteresis			0.2		V	
V _{HBR}	HB rising threshold	T _J = 25°C		3.2		V	
		T _J = −40°C to 125°C	2.5	3.9			
V _{HBH}	HB threshold hysteresis			0.2		V	
BOOTSTRAP DIODE							
V _{DL}	Low-current forward voltage	I _{VDD-HB} = 100 μA	T _J = 25°C	0.45		V	
			T _J = −40°C to 125°C	0.65			
V _{DH}	High-current forward voltage	I _{VDD-HB} = 100 mA	T _J = 25°C	0.90		V	
			T _J = −40°C to 125°C	1			
R _D	Dynamic resistance	I _{VDD-HB} = 100 mA	T _J = 25°C	1.85		Ω	
			T _J = −40°C to 125°C	3.60			
	HB-HS clamp regulation voltage		T _J = 25°C	5.2		V	
			T _J = −40°C to 125°C	4.7	5.45		

(1) Parameters that show only a typical value are ensured by design and may not be tested in production.

Electrical Characteristics (continued)

Specifications are $T_J = 25^\circ\text{C}$. Unless otherwise specified: $V_{DD} = V_{HB} = 5\text{ V}$, $V_{SS} = V_{HS} = 0\text{ V}$.
No load on LOL and HOL or HOH and HOL⁽¹⁾.

PARAMETER		TEST CONDITIONS		MIN	TYP	MAX	UNIT
LOW- AND HIGH-SIDE GATE DRIVER							
V _{OL}	Low-level output voltage	I _{HOL} = I _{LOL} = 100 mA	T _J = 25°C	0.06		0.10	V
			T _J = −40°C to 125°C				
V _{OH}	High-level output voltage V _{OH} = V _{DD} − LOH or V _{OH} = HB − HOH	I _{HOH} = I _{LOH} = 100 mA	T _J = 25°C	0.21		0.31	V
			T _J = −40°C to 125°C				
I _{OHL}	Peak source current	HOH, LOH = 0 V		1.2			A
I _{OLL}	Peak sink current	HOL, LOL = 5 V		5			A
I _{OHLK}	High-level output leakage current	HOH, LOH = 0 V	T _J = −40°C to 125°C	1.5			μA
I _{OLLK}	Low-level output leakage current	HOL, LOL = 5 V	T _J = −40°C to 125°C	1.5			μA

6.6 Switching Characteristics

over operating free-air temperature range (unless otherwise noted)

PARAMETER		TEST CONDITIONS		MIN	TYP	MAX	UNIT
t_{LPHL}	LO turnoff propagation delay	LI falling to LOL falling	$T_J = 25^\circ\text{C}$		26.5		ns
			$T_J = -40^\circ\text{C to } 125^\circ\text{C}$			45	
t_{LPLH}	LO turnon propagation delay	LI rising to LOH rising	$T_J = 25^\circ\text{C}$		28.0		ns
			$T_J = -40^\circ\text{C to } 125^\circ\text{C}$			45	
t_{HPHL}	HO turnoff propagation delay	HI falling to HOL falling	$T_J = 25^\circ\text{C}$		26.5		ns
			$T_J = -40^\circ\text{C to } 125^\circ\text{C}$			45	
t_{HPLH}	HO turnon propagation delay	HI rising to HOH rising	$T_J = 25^\circ\text{C}$		28		ns
			$T_J = -40^\circ\text{C to } 125^\circ\text{C}$			45.0	
t_{MON}	Delay matching LO on and HO off	$T_J = 25^\circ\text{C}$			1.5		ns
		$T_J = -40^\circ\text{C to } 125^\circ\text{C}$				8	
t_{MOFF}	Delay matching LO off and HO on	$T_J = 25^\circ\text{C}$			1.5		ns
		$T_J = -40^\circ\text{C to } 125^\circ\text{C}$				8	
t_{HRC}	HO rise time (0.5 V – 4.5 V)	$C_L = 1000\text{ pF}$			7		ns
t_{LRC}	LO rise time (0.5 V – 4.5 V)	$C_L = 1000\text{ pF}$			7		ns
t_{HFC}	HO fall time (0.5 V – 4.5 V)	$C_L = 1000\text{ pF}$			3.5		ns
t_{LFC}	LO fall time (0.5 V – 4.5 V)	$C_L = 1000\text{ pF}$			3.5		ns
t_{PW}	Minimum input pulse width that changes the output				10		ns
t_{BS}	Bootstrap diode reverse recovery time	$I_F = 100\text{ mA}$, $I_R = 100\text{ mA}$			40		ns

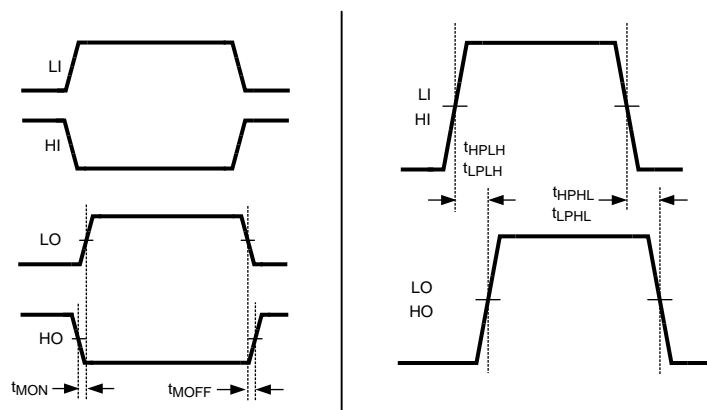


Figure 1. Timing Diagram

6.7 Typical Characteristics

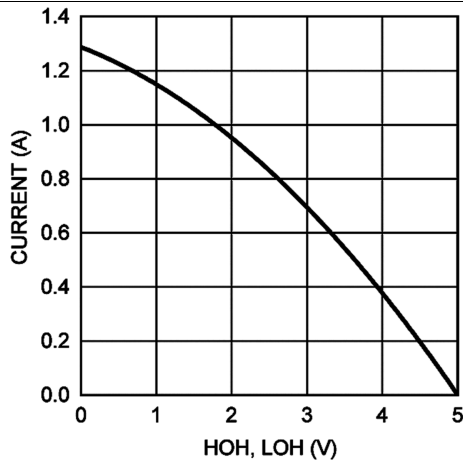


Figure 2. Peak Source Current vs Output Voltage

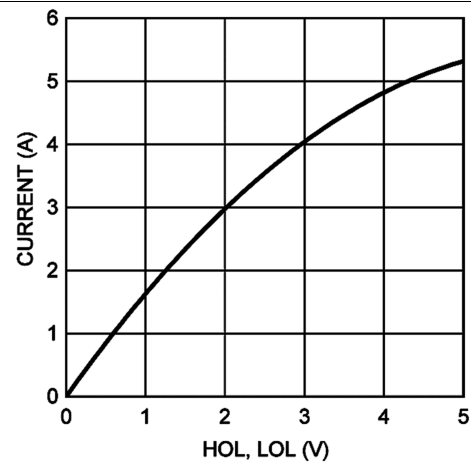
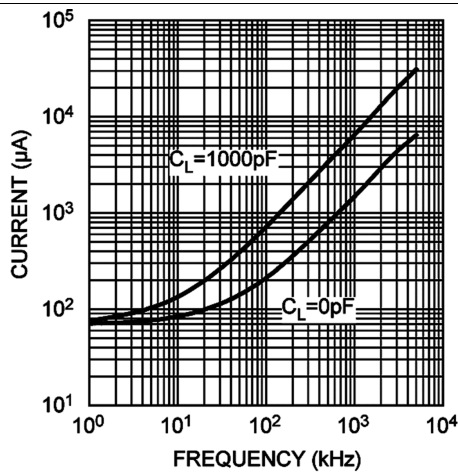
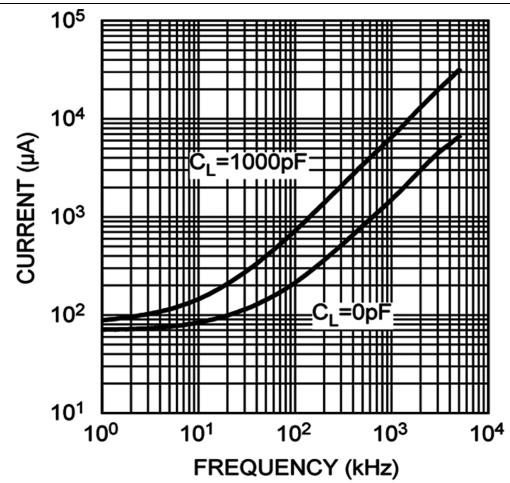
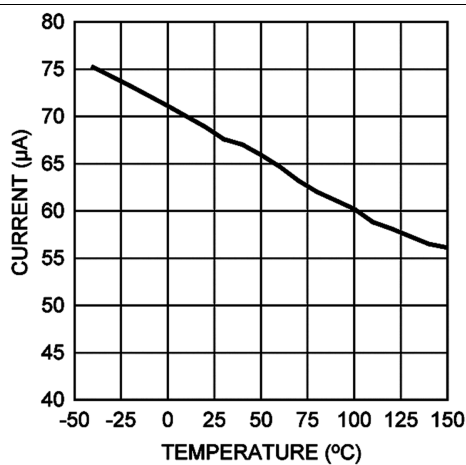
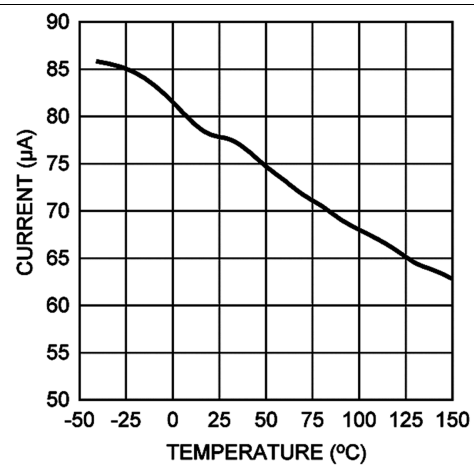


Figure 3. Peak Sink Current vs Output Voltage


 Figure 4. I_{DD} vs Frequency

 Figure 5. I_{HB} vs Frequency

 Figure 6. I_{DD} vs Temperature

 Figure 7. I_{HB} vs Temperature

Typical Characteristics (continued)

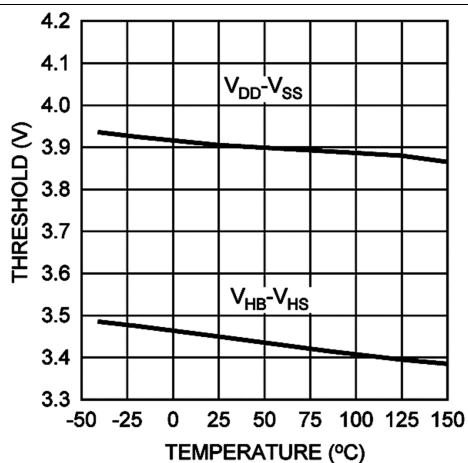


Figure 8. UVLO Rising Thresholds vs Temperature

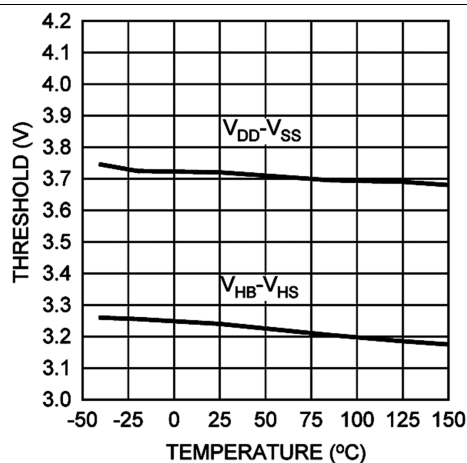


Figure 9. UVLO Falling Thresholds vs Temperature

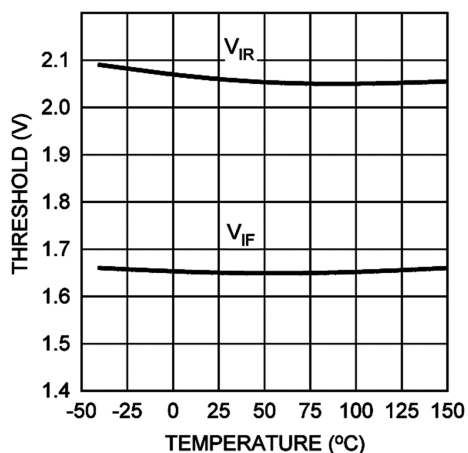


Figure 10. Input Thresholds vs Temperature

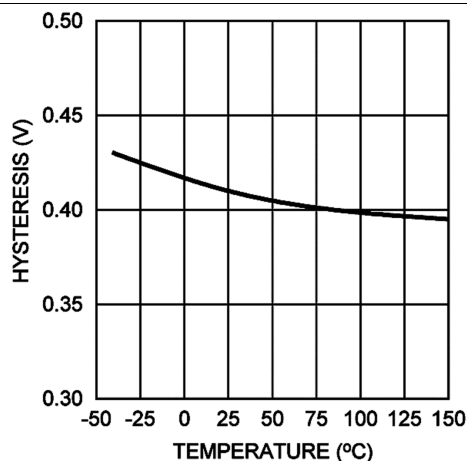


Figure 11. Input Threshold Hysteresis vs Temperature

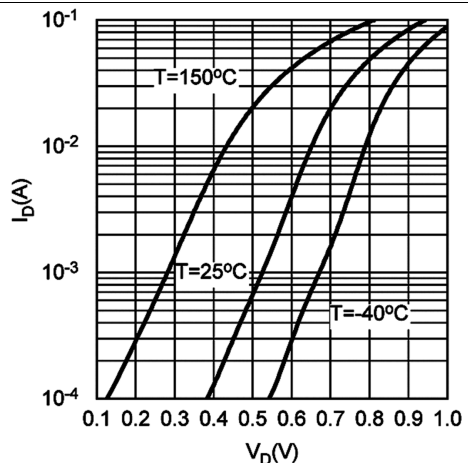


Figure 12. Bootstrap Diode Forward Voltage

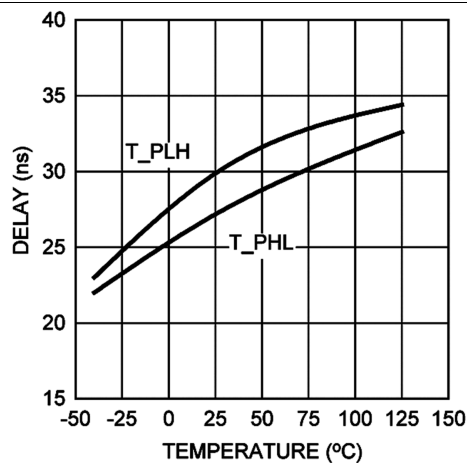
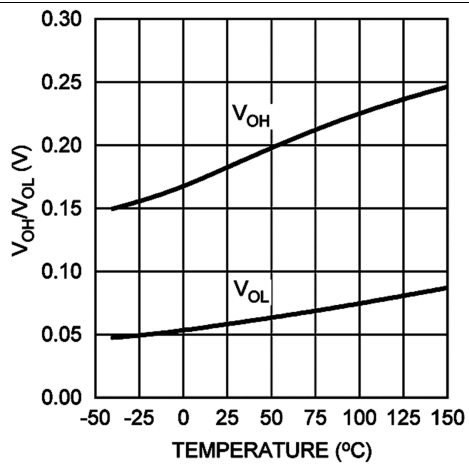


Figure 13. Propagation Delay vs Temperature

Typical Characteristics (continued)


Note: Unless otherwise specified, $V_{DD} = V_{HB} = 5\text{ V}$,
 $V_{SS} = V_{HS} = 0\text{ V}$.

Figure 14. LO and HO Gate Drive – High/Low Level Output Voltage vs Temperature

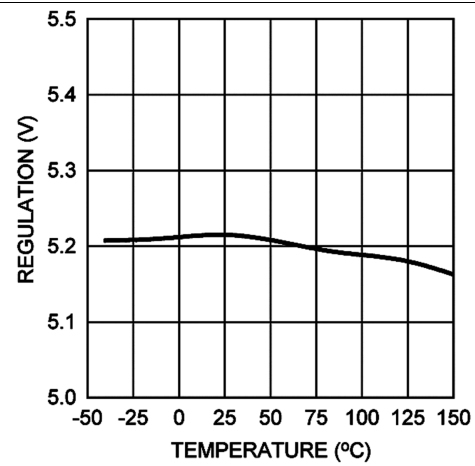


Figure 15. HB Regulation Voltage vs Temperature

Feature Description (continued)

Additionally, the input signals avoid pulses shorter than 3 ns by using the input filter to the HI and LI input pins. The values and part numbers of the circuit components are shown in the [Figure 16](#).

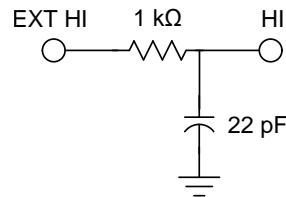
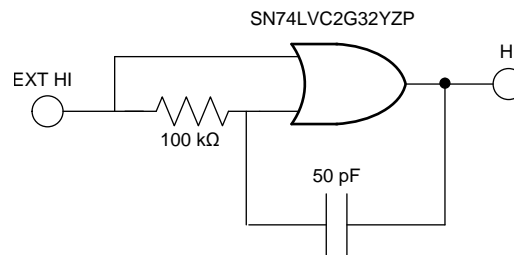


Figure 16. Input Filter 1 (High-Side Input Filter)

If short pulses or short delays are required, the circuit in [Figure 17](#) is recommended.



Copyright © 2017, Texas Instruments Incorporated

Figure 17. Input Filter 1 for Short Pulses (High-Side Input Filter)

7.3.2 Start-Up and UVLO

The LM5113-Q1 has an undervoltage lockout (UVLO) on both the VDD and bootstrap supplies. When the VDD voltage is below the threshold voltage of 3.8 V, both the HI and LI inputs are ignored to prevent the GaN FETs from being partially turned on. Also, if there is insufficient VDD voltage, the UVLO actively pulls the LOL and HOL low. When the VDD voltage is above its UVLO threshold, but the HB to HS bootstrap voltage is below the UVLO threshold of 3.2 V, only HOL is pulled low. Both UVLO threshold voltages have 200 mV of hysteresis to avoid chattering.

The startup voltage sequencing for this device is as follows: VDD voltage first, with the VIN voltage present thereafter.

The LM5113-Q1 requires an external bootstrap diode with a 100 Ω series resistor from VDD to HB to charge the high side supply on a cycle by cycle basis. The recommended bootstrap diode options are BAT46, BAT41, or LL4148.

Table 1. VDD UVLO Feature Logic Operation

CONDITION ($V_{HB-HS} > V_{HBR}$ for all cases below)	HI	LI	HO	LO
$V_{DD} - V_{SS} < V_{DDR}$ during device start-up	H	L	L	L
$V_{DD} - V_{SS} < V_{DDR}$ during device start-up	L	H	L	L
$V_{DD} - V_{SS} < V_{DDR}$ during device start-up	H	H	L	L
$V_{DD} - V_{SS} < V_{DDR}$ during device start-up	L	L	L	L
$V_{DD} - V_{SS} < V_{DDR} - V_{DDH}$ after device start-up	H	L	L	L
$V_{DD} - V_{SS} < V_{DDR} - V_{DDH}$ after device start-up	L	H	L	L
$V_{DD} - V_{SS} < V_{DDR} - V_{DDH}$ after device start-up	H	H	L	L
$V_{DD} - V_{SS} < V_{DDR} - V_{DDH}$ after device start-up	L	L	L	L

Table 2. V_{HB-HS} UVLO Feature Logic Operation

CONDITION ($V_{DD} > V_{DDR}$ for all cases below)	HI	LI	HO	LO
$V_{HB-HS} < V_{HBR}$ during device start-up	H	L	L	L
$V_{HB-HS} < V_{HBR}$ during device start-up	L	H	L	H
$V_{HB-HS} < V_{HBR}$ during device start-up	H	H	L	H
$V_{HB-HS} < V_{HBR}$ during device start-up	L	L	L	L
$V_{HB-HS} < V_{HBR} - V_{HBH}$ after device start-up	H	L	L	L
$V_{HB-HS} < V_{HBR} - V_{HBH}$ after device start-up	L	H	L	H
$V_{HB-HS} < V_{HBR} - V_{HBH}$ after device start-up	H	H	L	H
$V_{HB-HS} < V_{HBR} - V_{HBH}$ after device start-up	L	L	L	L

7.3.3 HS Negative Voltage and Bootstrap Supply Voltage Clamping

Due to the intrinsic nature of enhancement mode GaN FETs, the source-to-drain voltage of the bottom switch is usually higher than a diode forward voltage drop when the gate is pulled low. This causes negative voltage on HS pin. Moreover, this negative voltage transient may become even more pronounced due to the effects of board layout and device drain/source parasitic inductances. With high-side driver using the floating bootstrap configuration, negative HS voltage can lead to an excessive bootstrap voltage, which can damage the high-side GaN FET. The LM5113-Q1 solves this problem with an internal clamping circuit that prevents the bootstrap voltage from exceeding 5.2 V typical.

7.3.4 Level Shift

The level-shift circuit is the interface from the high-side input to the high-side driver stage, which is referenced to the switch node (HS). The level shift allows control of the HO output, which is referenced to the HS pin and provides excellent delay matching with the low-side driver. Typical delay matching between LO and HO is around 1.5 ns.

7.4 Device Functional Modes

Table 3 shows the device truth table.

Table 3. Truth Table

HI	LI	HOH	HOL	LOH	LOL
L	L	Open	L	Open	L
L	H	Open	L	H	Open
H	L	H	Open	Open	L
H	H	H	Open	H	Open

8 Application and Implementation

NOTE

Information in the following applications sections is not part of the TI component specification, and TI does not warrant its accuracy or completeness. TI's customers are responsible for determining suitability of components for their purposes. Customers should validate and test their design implementation to confirm system functionality.

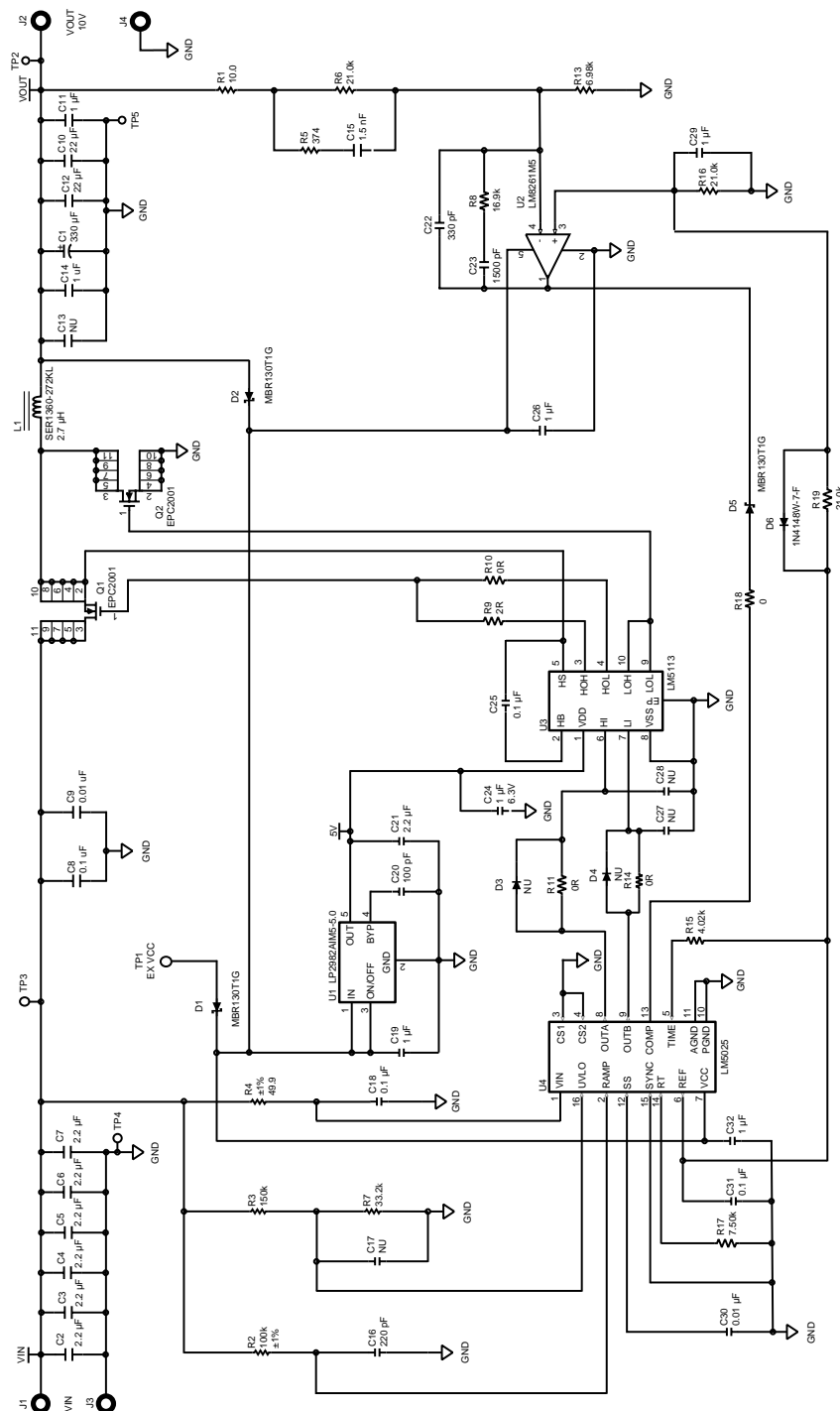
8.1 Application Information

To operate GaN transistors at very high switching frequencies and to reduce associated switching losses, a powerful gate driver is employed between the PWM output of controller and the gates of the GaN transistor. Also, gate drivers are indispensable when the outputs of the PWM controller do not meet the voltage or current levels needed to directly drive the gates of the switching devices. With the advent of digital power, this situation is often encountered because the PWM signal from the digital controller is often a 3.3-V logic signal, which cannot effectively turn on a power switch. A level-shift circuit is needed to boost the 3.3-V signal to the gate-drive voltage (such as 12 V) to fully turn on the power device and minimize conduction losses. Traditional buffer-drive circuits based on NPN/PNP bipolar transistors in totem-pole arrangement prove inadequate with digital power because they lack level-shifting capability. Gate drivers effectively combine both the level-shifting and buffer-drive functions. Gate drivers also address other needs such as minimizing the effect of high-frequency switching noise (by placing the high-current driver IC physically close to the power switch), driving gate-drive transformers and controlling floating power-device gates, reducing power dissipation and thermal stress in controllers by moving gate-charge power losses from the controller into the driver.

The LM5113-Q1 is a MHz high- and low-side gate driver for enhancement mode GaN FETs in a synchronous buck, boost, or half-bridge configuration. The high-side bias voltage is generated using a bootstrap technique and is internally clamped at 5.2 V, which prevents the gate voltage from exceeding the maximum gate-source voltage rating of enhancement mode GaN FETs. The LM5113-Q1 has split gate outputs with strong sink capability, providing flexibility to adjust the turnon and turnoff strength independently.

8.2 Typical Application

The circuit in [Figure 18](#) shows a synchronous buck converter to evaluate the LM5113-Q1 device. Detailed synchronous buck converter specifications are listed in [Design Requirements](#). The active clamping voltage mode controller LM5025 is used for close-loop control and generates the PWM signals of the buck switch and the synchronous switch. For more information, see [Figure 18](#).



Input 15 V to 60 V, output 10 V, 800 kHz

Figure 18. LP5113-Q1 Application Circuit

Typical Application (continued)

8.2.1 Design Requirements

Table 4 lists the design requirements for the typical application.

Table 4. Design Parameters

PARAMETER	SPECIFICATION
Input operating range	15 – 60 V
Output voltage	10 V
Output current, 48-V input	10 A
Output current, 60-V input	7 A
Efficiency at 48 V, 10 A	>90%
Frequency	800 kHz

8.2.2 Detailed Design Procedure

This procedure outlines the design considerations of LM5113-Q1 in a synchronous buck converter with enhancement mode GaN FET. Refer to Figure 18 for component names and network locations. For additional design help, see Figure 18.

8.2.2.1 VDD Bypass Capacitor

The VDD bypass capacitor provides the gate charge for the low-side and high-side transistors and to absorb the reverse recovery charge of the bootstrap diode. The required bypass capacitance can be calculated with Equation 1.

$$C_{VDD} > \frac{Q_{gH} + Q_{gL} + Q_{rr}}{\Delta V}$$

where

- Q_{gH} and Q_{gL} are gate charge of the high-side and low-side transistors, respectively.
- Q_{rr} is the reverse recovery charge of the bootstrap diode, which is typically around 4 nC.
- ΔV is the maximum allowable voltage drop across the bypass capacitor. (1)

TI recommends a 0.1-μF or larger value, good quality, ceramic capacitor. The bypass capacitor must be placed as close as possible to the pins of the IC to minimize the parasitic inductance.

8.2.2.2 Bootstrap Capacitor

The bootstrap capacitor provides the gate charge for the high-side switch, DC bias power for HB UVLO circuit, and the reverse recovery charge of the bootstrap diode. The required bypass capacitance can be calculated with Equation 2.

$$C_{BST} > \frac{Q_{gH} + I_{HB} \times t_{ON} + Q_{rr}}{\Delta V}$$

where

- I_{HB} is the quiescent current of the high-side driver.
- t_{on} is the maximum on-time period of the high-side transistor. (2)

A good-quality, ceramic capacitor must be used for the bootstrap capacitor. TI recommends placement of the bootstrap capacitor as close as possible to the HB and HS pin.

8.2.2.3 Power Dissipation

The power consumption of the driver is an important measure that determines the maximum achievable operating frequency of the driver. It must be kept below the maximum power-dissipation limit of the package at the operating temperature. The total power dissipation of the LM5113-Q1 is the sum of the gate driver losses and the bootstrap diode power loss.

The gate driver losses are incurred by charge and discharge of the capacitive load. It can be approximated as:

$$P = (C_{\text{LoadH}} + C_{\text{LoadL}}) \times V_{\text{DD}}^2 \times f_{\text{SW}}$$

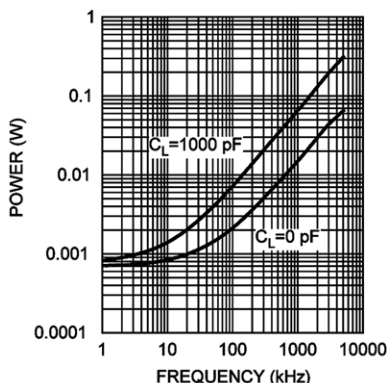
where

- C_{LoadH} and C_{LoadL} are the high-side and the low-side capacitive loads, respectively. (3)

It can also be calculated with the total input gate charge of the high-side and the low-side transistors as:

$$P = (Q_{\text{gH}} + Q_{\text{gL}}) \times V_{\text{DD}} \times f_{\text{SW}} \quad (4)$$

There are some additional losses in the gate drivers due to the internal CMOS stages used to buffer the LO and HO outputs. Figure 19 shows the measured gate-driver power dissipation versus frequency and load capacitance. At higher frequencies and load capacitance values, the power dissipation is dominated by the power losses driving the output loads and agrees well with the above equations. This plot can be used to approximate the power losses due to the gate drivers.

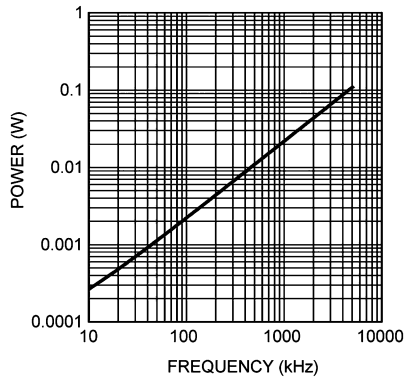


Gate-driver power dissipation (LO+HO), VDD = +5 V

Figure 19. Neglecting Bootstrap Diode Losses

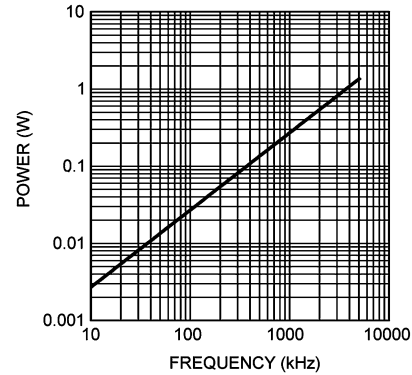
The bootstrap diode power loss is the sum of the forward bias power loss that occurs while charging the bootstrap capacitor and the reverse bias power loss that occurs during reverse recovery. Because each of these events happens once per cycle, the diode power loss is proportional to the operating frequency. Larger capacitive loads require more energy to recharge the bootstrap capacitor resulting in more losses. Higher input voltages (V_{IN}) to the half bridge also result in higher reverse recovery losses.

Figure 20 and Figure 21 show the forward bias power loss and the reverse bias power loss of the bootstrap diode, respectively. The plots are generated based on calculations and lab measurements of the diode reverse time and current under several operating conditions. The plots can be used to predict the bootstrap diode power loss under different operating conditions.



The load of high-side driver is a GaN FET with total gate charge of 10 nC.

Figure 20. Forward Bias Power Loss of Bootstrap Diode $V_{IN} = 50$ V



The load of high-side driver is a GaN FET with total gate charge of 10 nC.

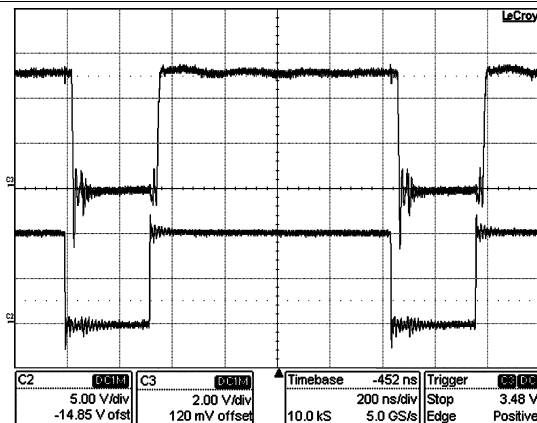
Figure 21. Reverse Recovery Power Loss of Bootstrap Diode $V_{IN} = 50$ V

The sum of the driver loss and the bootstrap diode loss is the total power loss of the IC. For a given ambient temperature, the maximum allowable power loss of the IC can be defined as [Equation 5](#).

$$P = \frac{(T_J - T_A)}{\theta_{JA}}$$

(5)

8.2.3 Application Curves



Conditions:

Input Voltage = 48 V DC, Load Current = 5 A

Traces:

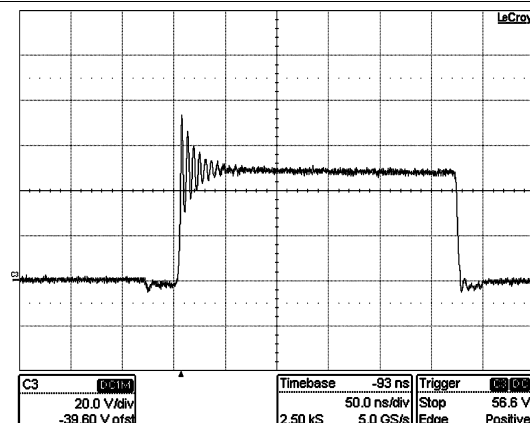
Top Trace: Gate of Low-Side eGaN FET, Volt/div = 2 V

Bottom Trace: LI of LM5113-Q1, Volt/div = 5 V

Bandwidth Limit = 600 MHz

Horizontal Resolution = 0.2 μ s/div

Figure 22. Low-Side Driver Input and Output



Conditions:

Input Voltage = 48 V DC,

Load Current = 10 A

Traces:

Trace: Switch-Node Voltage, Volts/div = 20 V

Bandwidth Limit = 600 MHz

Horizontal Resolution = 50 ns/div

Figure 23. Switch-Node Voltage

9 Power Supply Recommendations

The recommended bias supply voltage range for LM5113-Q1 is from 4.5 V to 5.5 V. The lower end of this range is governed by the internal undervoltage lockout (UVLO) protection feature of the VDD supply circuit. TI recommends keeping proper margin to allow for transient voltage spikes while not violating the LM5113-Q1 absolute maximum VDD voltage rating and the GaN transistor gate breakdown voltage limit.

The UVLO protection feature also involves a hysteresis function. This means that once the device is operating in normal mode, if the VDD voltage drops, the device continues to operate in normal mode as far as the voltage drop does not exceed the hysteresis specification, VDDH. If the voltage drop is more than hysteresis specification, the device shuts down. Therefore, while operating at or near the 4.5-V range, the voltage ripple on the VDD power supply output must be smaller than the hysteresis specification of LM5113-Q1 UVLO to avoid triggering device shutdown.

A local bypass capacitor must be placed between the VDD and VSS pins. This capacitor must be located as close as possible to the device. A low-ESR, ceramic surface-mount capacitor is recommended. TI recommends using 2 capacitors across VDD and GND: a 100-nF ceramic surface-mount capacitor for high frequency filtering placed very close to VDD and GND pin, and another surface-mount capacitor, 220-nF to 10- μ F, for IC bias requirements.

10 Layout

10.1 Layout Guidelines

Small gate capacitance and miller capacitance enable enhancement mode GaN FETs to operate with fast switching speed. The induced high dv/dt and di/dt , coupled with a low gate-threshold voltage and limited headroom of enhancement mode GaN FETs gate voltage, make the circuit layout crucial to the optimum performance. Following are some recommendations.

1. The first priority in designing the layout of the driver is to confine the high peak currents that charge and discharge the GaN FETs gate into a minimal physical area. This decreases the loop inductance and minimize noise issues on the gate terminal of the GaN FETs. The GaN FETs must be placed close to the driver.
2. The second high current path includes the bootstrap capacitor, the local ground referenced VDD bypass capacitor, and low-side GaN FET. The bootstrap capacitor is recharged on a cycle-by-cycle basis through the bootstrap diode from the ground referenced VDD capacitor. The recharging occurs in a short time interval and involves high peak current. Minimizing this loop length and area on the circuit board is important to ensure reliable operation.
3. The parasitic inductance in series with the source of the high-side FET and the low-side FET can impose excessive negative voltage transients on the driver. TI recommends connecting the HS pin and VSS pin to the respective source of the high-side and low-side transistors with a short and low-inductance path.
4. The parasitic source inductance, along with the gate capacitor and the driver pulldown path, can form an LCR resonant tank, resulting in gate voltage oscillations. An optional resistor or ferrite bead can be used to damp the ringing.
5. Low ESR/ESL capacitors must be connected close to the IC, between VDD and VSS pins and between the HB and HS pins to support the high peak current being drawn from VDD during turnon of the FETs. Keeping guideline number 1 above (minimized GaN FETs gate driver loop) as the first priority, it is also desirable to place the VDD decoupling capacitor and the HB to HS bootstrap capacitor on the same side of the PC board as the driver. The inductance of vias can impose excessive ringing on the IC pins.
6. To prevent excessive ringing on the input power bus, good decoupling practices are required by placing low-ESR ceramic capacitors adjacent to the GaN FETs.

Figure 24 and Figure 25 show recommended layout patterns for the 10-pin WSON package. Two cases are considered: (1) Without any gate resistors, and (2) with an optional turnon gate resistor. Note that 0402 surface mount package is assumed for the passive components in Figure 24 and Figure 25.

10.2 Layout Example

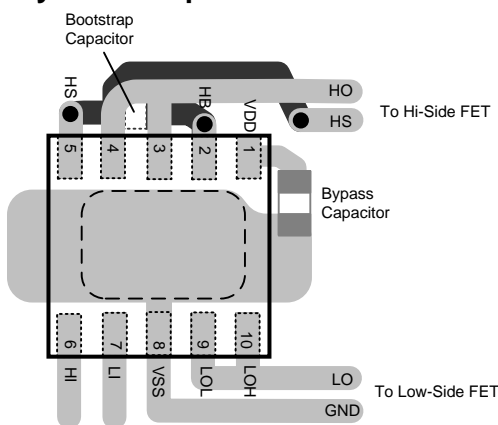


Figure 24. 10-Pin WSON Without Gate Resistors

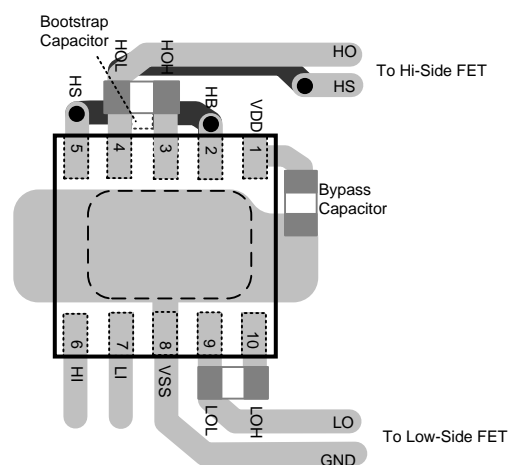


Figure 25. 10-Pin WSON With HOH and LOH Gate Resistors

11 器件和文档支持

11.1 文档支持

11.1.1 相关文档

相关文档如下：

[AN-2149 LM5113 评估板](#) (SNVA484)

11.2 接收文档更新通知

要接收文档更新通知，请导航至 [TI.com.cn](#) 上的器件产品文件夹。请单击右上角的提醒我 进行注册，即可每周接收产品信息更改摘要。有关更改的详细信息，请查看任何已修订文档中包含的修订历史记录。

11.3 社区资源

下列链接提供到 TI 社区资源的连接。链接的内容由各个分销商“按照原样”提供。这些内容并不构成 TI 技术规范，并且不一定反映 TI 的观点；请参阅 TI 的 [《使用条款》](#)。

TI E2E™ 在线社区 *TI 的工程师对工程师 (E2E) 社区*。此社区的创建目的在于促进工程师之间的协作。在 [e2e.ti.com](#) 中，您可以咨询问题、分享知识、拓展思路并与同行工程师一道帮助解决问题。

设计支持 *TI 参考设计支持* 可帮助您快速查找有帮助的 E2E 论坛、设计支持工具以及技术支持的联系信息。

11.4 商标

E2E is a trademark of Texas Instruments.

All other trademarks are the property of their respective owners.

11.5 静电放电警告



这些装置包含有限的内置 ESD 保护。存储或装卸时，应将导线一起截短或将装置放置于导电泡棉中，以防止 MOS 门极遭受静电损伤。

11.6 Glossary

[SLYZ022](#) — *TI Glossary*.

This glossary lists and explains terms, acronyms, and definitions.

12 机械、封装和可订购信息

以下页面包含机械、封装和可订购信息。这些信息是指定器件的最新可用数据。数据如有变更，恕不另行通知，且不会对此文档进行修订。如需获取此数据表的浏览器版本，请查阅左侧的导航栏。

PACKAGING INFORMATION

Orderable part number	Status (1)	Material type (2)	Package Pins	Package qty Carrier	RoHS (3)	Lead finish/ Ball material (4)	MSL rating/ Peak reflow (5)	Op temp (°C)	Part marking (6)
LM5113QDPRRQ1	Active	Production	WSON (DPR) 10	4500 LARGE T&R	Yes	SN	Level-1-260C-UNLIM	-40 to 125	L5113Q
LM5113QDPRRQ1.A	Active	Production	WSON (DPR) 10	4500 LARGE T&R	Yes	SN	Level-1-260C-UNLIM	-40 to 125	L5113Q

⁽¹⁾ **Status:** For more details on status, see our [product life cycle](#).

⁽²⁾ **Material type:** When designated, preproduction parts are prototypes/experimental devices, and are not yet approved or released for full production. Testing and final process, including without limitation quality assurance, reliability performance testing, and/or process qualification, may not yet be complete, and this item is subject to further changes or possible discontinuation. If available for ordering, purchases will be subject to an additional waiver at checkout, and are intended for early internal evaluation purposes only. These items are sold without warranties of any kind.

⁽³⁾ **RoHS values:** Yes, No, RoHS Exempt. See the [TI RoHS Statement](#) for additional information and value definition.

⁽⁴⁾ **Lead finish/Ball material:** Parts may have multiple material finish options. Finish options are separated by a vertical ruled line. Lead finish/Ball material values may wrap to two lines if the finish value exceeds the maximum column width.

⁽⁵⁾ **MSL rating/Peak reflow:** The moisture sensitivity level ratings and peak solder (reflow) temperatures. In the event that a part has multiple moisture sensitivity ratings, only the lowest level per JEDEC standards is shown. Refer to the shipping label for the actual reflow temperature that will be used to mount the part to the printed circuit board.

⁽⁶⁾ **Part marking:** There may be an additional marking, which relates to the logo, the lot trace code information, or the environmental category of the part.

Multiple part markings will be inside parentheses. Only one part marking contained in parentheses and separated by a "~" will appear on a part. If a line is indented then it is a continuation of the previous line and the two combined represent the entire part marking for that device.

Important Information and Disclaimer:The information provided on this page represents TI's knowledge and belief as of the date that it is provided. TI bases its knowledge and belief on information provided by third parties, and makes no representation or warranty as to the accuracy of such information. Efforts are underway to better integrate information from third parties. TI has taken and continues to take reasonable steps to provide representative and accurate information but may not have conducted destructive testing or chemical analysis on incoming materials and chemicals. TI and TI suppliers consider certain information to be proprietary, and thus CAS numbers and other limited information may not be available for release.

In no event shall TI's liability arising out of such information exceed the total purchase price of the TI part(s) at issue in this document sold by TI to Customer on an annual basis.

OTHER QUALIFIED VERSIONS OF LM5113-Q1 :

- Catalog : [LM5113](#)

NOTE: Qualified Version Definitions:

- Catalog - TI's standard catalog product

TAPE AND REEL INFORMATION


*All dimensions are nominal

Device	Package Type	Package Drawing	Pins	SPQ	Reel Diameter (mm)	Reel Width W1 (mm)	A0 (mm)	B0 (mm)	K0 (mm)	P1 (mm)	W (mm)	Pin1 Quadrant
LM5113QDPRRQ1	WSO	DPR	10	4500	330.0	12.4	4.3	4.3	1.3	8.0	12.0	Q1

TAPE AND REEL BOX DIMENSIONS



*All dimensions are nominal

Device	Package Type	Package Drawing	Pins	SPQ	Length (mm)	Width (mm)	Height (mm)
LM5113QDPRRQ1	WSON	DPR	10	4500	367.0	367.0	35.0

GENERIC PACKAGE VIEW

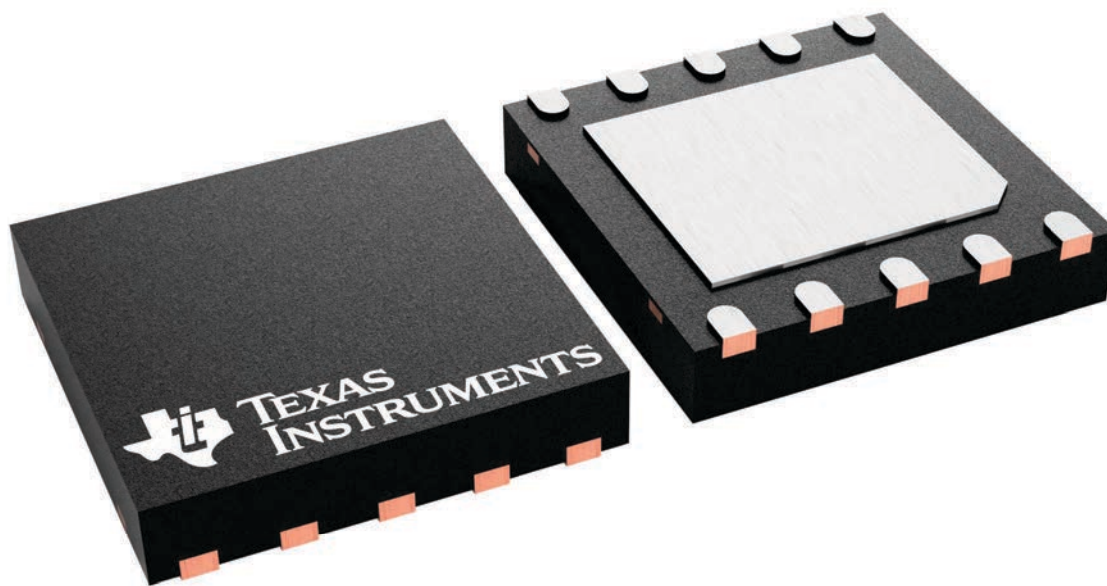
DPR 10

WSO - 0.8 mm max height

4 x 4, 0.8 mm pitch

PLASTIC SMALL OUTLINE - NO LEAD

This image is a representation of the package family, actual package may vary.
Refer to the product data sheet for package details.



4232220/A

重要通知和免责声明

TI“按原样”提供技术和可靠性数据（包括数据表）、设计资源（包括参考设计）、应用或其他设计建议、网络工具、安全信息和其他资源，不保证没有瑕疵且不做任何明示或暗示的担保，包括但不限于对适销性、与某特定用途的适用性或不侵犯任何第三方知识产权的暗示担保。

这些资源可供使用 TI 产品进行设计的熟练开发人员使用。您将自行承担以下全部责任：(1) 针对您的应用选择合适的 TI 产品，(2) 设计、验证并测试您的应用，(3) 确保您的应用满足相应标准以及任何其他安全、安保法规或其他要求。

这些资源如有变更，恕不另行通知。TI 授权您仅可将这些资源用于研发本资源所述的 TI 产品的相关应用。严禁以其他方式对这些资源进行复制或展示。您无权使用任何其他 TI 知识产权或任何第三方知识产权。对于因您对这些资源的使用而对 TI 及其代表造成的任何索赔、损害、成本、损失和债务，您将全额赔偿，TI 对此概不负责。

TI 提供的产品受 [TI 销售条款](#)、[TI 通用质量指南](#) 或 [ti.com](#) 上其他适用条款或 TI 产品随附的其他适用条款的约束。TI 提供这些资源并不会扩展或以其他方式更改 TI 针对 TI 产品发布的适用的担保或担保免责声明。除非德州仪器 (TI) 明确将某产品指定为定制产品或客户特定产品，否则其产品均为按确定价格收入目录的标准通用器件。

TI 反对并拒绝您可能提出的任何其他或不同的条款。

版权所有 © 2025，德州仪器 (TI) 公司

最后更新日期：2025 年 10 月