

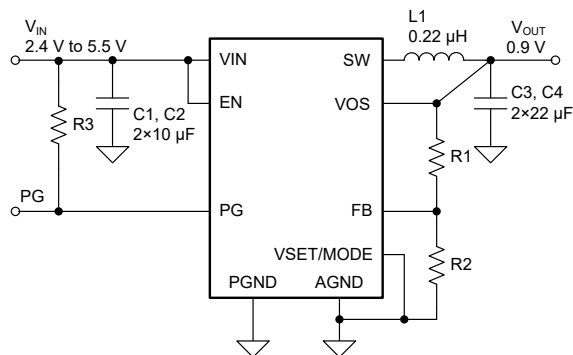
TPS62865/TPS62867 采用 1.5mm × 2.5mm QFN 封装的 2.4V 至 5.5V 输入电压、4A 和 6A 同步降压转换器

1 特性

- 可实现快速瞬态响应的 DCS-Control 拓扑
- 11mΩ 和 10.5mΩ 内部功率 MOSFET
- 1% 的输出电压精度
- 4μA 工作静态电流
- 2.4V 至 5.5V 输入电压范围
- 0.6V 至 VIN 输出电压范围
- [Voltage Selection Table](#) 固定 (可通过外部电阻器进行选择) 和可调节输出电压版本
- 2.4MHz 开关频率
- 强制 PWM 或省电模式
- 输出电压放电
- 100% 占空比模式
- 断续短路保护
- 具有窗口比较器的电源正常指示器
- 热关断
- 解决方案尺寸可降至 30mm²
- 采用具有 0.5mm 间距的 1.5mm × 2.5mm QFN 封装
- 使用 TPS62865 并借助 [WEBENCH® Power Designer](#) 创建定制设计方案
- 使用 TPS62867 并借助 [WEBENCH® Power Designer](#) 创建定制设计方案

2 应用

- 为 [FPGA](#)、[CPU](#)、[ASIC](#) 或视频芯片组提供内核电源
- [机器视觉摄像机](#)
- [IP 网络摄像头](#)
- [固态硬盘](#)
- [光学模块](#)
- [多功能打印机](#)



典型应用原理图 - 可调输出电压

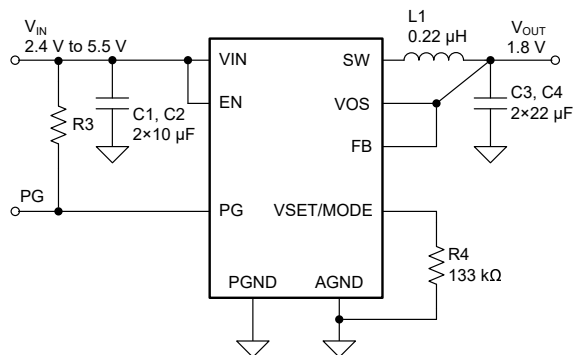
3 说明

TPS62865 和 TPS62867 器件是高频同步降压转换器，可提供高效、灵活和高功率密度解决方案。这些转换器在中高负载条件下以 PWM 模式运行，并在轻负载时自动进入省电模式运行，从而在整个负载电流范围内保持高效率。这些器件还可强制进入 PWM 模式运行，尽量减少输出电压纹波。凭借其 DCS-Control 架构，这些器件可实现出色的负载瞬态性能并符合严格的输出电压精度要求。此类器件可提供电源正常信号和内部软启动电路。这些器件能够以 100% 模式运行。在故障保护方面，这些器件加入了断续短路保护以及热关断功能。

器件信息

器件型号	封装 ⁽¹⁾	封装尺寸 (标称值)
TPS62865	QFN (9)	1.5 × 2.5 × 1mm
TPS62867		

(1) 如需了解所有可用封装，请参阅数据表末尾的可订购产品附录。



典型应用原理图 - 固定输出电压



Table of Contents

1 特性	1	8.4 Device Functional Modes.....	10
2 应用	1	9 Application and Implementation	12
3 说明	1	9.1 Application Information.....	12
4 Revision History	2	9.2 Typical Application.....	12
5 Device Options	3	10 Power Supply Recommendations	19
6 Pin Configuration and Functions	3	11 Layout	20
7 Specifications	4	11.1 Layout Guidelines.....	20
7.1 Absolute Maximum Ratings	4	11.2 Layout Example.....	20
7.2 ESD Ratings	4	12 Device and Documentation Support	22
7.3 Recommended Operating Conditions	4	12.1 Device Support.....	22
7.4 Thermal Information	5	12.2 Documentation Support.....	22
7.5 Electrical Characteristics	6	12.3 支持资源.....	22
7.6 Typical Characteristics.....	7	12.4 Trademarks.....	22
8 Detailed Description	8	12.5 静电放电警告.....	22
8.1 Overview.....	8	12.6 术语表.....	22
8.2 Functional Block Diagram.....	8	13 Mechanical, Packaging, and Orderable Information	23
8.3 Feature Description.....	8		

4 Revision History

注：以前版本的页码可能与当前版本的页码不同

DATE	REVISION	NOTES
March 2021	*	Initial Release

5 Device Options

PART NUMBER ⁽¹⁾	OUTPUT CURRENT
TPS62865	4 A
TPS62867	6 A

(1) For all available packages, see the orderable addendum at the end of the data sheet.

6 Pin Configuration and Functions

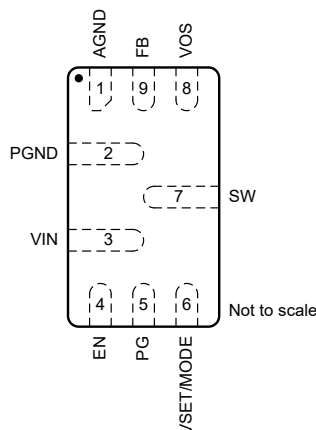


图 6-1. 9-Pin RQY QFN Package (Top View)

表 6-1. Pin Functions

PIN		DESCRIPTION
NAME	NO.	
AGND	1	Analog ground pin
FB	9	Feedback pin. For the fixed output voltage versions, the pin must be connected to the output directly.
VOS	8	Output voltage sense pin. This pin must be directly connected to the output capacitor.
PGND	2	Power ground pin
SW	7	Switch pin of the power stage
VIN	3	Power supply input voltage pin
EN	4	Device enable pin. To enable the device, this pin needs to be pulled high. Pulling this pin low disables the device. Do not leave floating.
VSET/MODE	6	Voltage Set pin In fixed output voltage applications, connect a resistor between this pin and GND to set the output voltage (see 表 8-2). After start-up, connect this pin to a high level to enable forced-PWM operation, or to a low level to enable power-save mode. In adjustable output voltage applications, connect this pin to a high level to enable forced-PWM operation, or to a low level to enable power-save mode operation.
PG	5	Power-good open-drain output pin. The pullup resistor can be connected to voltages up to 5.5 V. If unused, leave it floating.

7 Specifications

7.1 Absolute Maximum Ratings

See (1)

		MIN	MAX	UNIT
Voltage ⁽²⁾	VIN, EN, VOS, FB, PG, VSET/MODE	– 0.3	6	V
	SW (DC)	– 0.3	VIN + 0.3	
	SW (AC, less than 10 ns) ⁽³⁾	– 2.5	10	
ISINK_PG	Sink current at PG		1	mA
TJ	Junction temperature	– 40	150	°C
Tstg	Storage temperature	– 65	150	°C

- (1) Operation outside the *Absolute Maximum Ratings* may cause permanent device damage. *Absolute Maximum Ratings* do not imply functional operation of the device at these or any other conditions beyond those listed under *Recommended Operating Conditions*. If used outside the *Recommended Operating Conditions* but within the *Absolute Maximum Ratings*, the device may not be fully functional, and this may affect device reliability, functionality, performance, and shorten the device lifetime.
- (2) All voltage values are with respect to network ground terminal.
- (3) While switching

7.2 ESD Ratings

			VALUE	UNIT
V(ESD)	Electrostatic discharge	Human body model (HBM), per ANSI/ESDA/JEDEC JS-001, all pins ⁽¹⁾	±2000	V
		Charged device model (CDM), per JEDEC specification JESD22-C101, all pins ⁽²⁾	±500	

- (1) JEDEC document JEP155 states that 500-V HBM allows safe manufacturing with a standard ESD control process.
- (2) JEDEC document JEP157 states that 250-V CDM allows safe manufacturing with a standard ESD control process.

7.3 Recommended Operating Conditions

Over operating junction temperature range (unless otherwise noted)

		MIN	NOM	MAX	UNIT
VIN	Supply Voltage Range	2.4		5.5	V
VOU	Output Voltage Range	0.6		VIN	V
SR	Slew rate at VIN ⁽¹⁾	– 10			mV/μs
IOUT	Output current, TPS62865			4	A
	Output current, TPS62867			6	
TJ	Junction temperature	– 40		125	°C

- (1) The falling slew rate of VIN must be limited if VIN goes below VUVLO.

7.4 Thermal Information

THERMAL METRIC ⁽¹⁾		TPS6286x		UNIT
		JEDEC 51-7	TPS62867EVM-121	
		9 PINS	9 PINS	
$R_{\theta JA}$	Junction-to-ambient thermal resistance	90.9	60.3	°C/W
$R_{\theta JC(top)}$	Junction-to-case (top) thermal resistance	68.2	n/a ⁽²⁾	°C/W
$R_{\theta JB}$	Junction-to-board thermal resistance	25.0	n/a ⁽²⁾	°C/W
Ψ_{JT}	Junction-to-top characterization parameter	1.9	3.3	°C/W
Ψ_{JB}	Junction-to-board characterization parameter	24.7	31.5	°C/W

(1) For more information about traditional and new thermal metrics, see the [Semiconductor and IC Package Thermal Metrics](#) application report.

(2) Not applicable to an EVM

7.5 Electrical Characteristics

$T_J = -40^{\circ}\text{C}$ to 125°C , and $V_{IN} = 2.4\text{ V}$ to 5.5 V . Typical values are at $T_J = 25^{\circ}\text{C}$ and $V_{IN} = 5\text{ V}$, unless otherwise noted.

PARAMETER		TEST CONDITIONS	MIN	TYP	MAX	UNIT
SUPPLY						
I_Q	Quiescent current	EN = High, no load, device not switching		4	10	μA
I_{Q_VOS}	Operating quiescent current into VOS pin	EN = High, no load, device not switching, $V_{VOS} = 1.8\text{ V}$		8		μA
I_{SD}	Shutdown current	EN = Low, $T_J = -40^{\circ}\text{C}$ to 85°C		0.24	1	μA
V_{UVLO}	Undervoltage lockout threshold	V_{IN} rising	2.2	2.3	2.4	V
		V_{IN} falling	2.1	2.2	2.3	V
T_{JSD}	Thermal shutdown threshold	T_J rising		150		$^{\circ}\text{C}$
	Thermal shutdown hysteresis	T_J falling		20		$^{\circ}\text{C}$
LOGIC INTERFACE						
V_{IH}	High-level input threshold voltage at EN and VSET/MODE		0.84			V
V_{IL}	Low-level input threshold voltage at EN and VSET/MODE				0.4	V
$I_{EN,LKG}$	Input leakage current into EN pin			0.01	0.1	μA
STARTUP, POWER GOOD						
t_{Delay}	Enable delay time	Time from EN high to device starts switching 249-k Ω resistor connected between VSET/MODE and GND	420	700	1100	μs
t_{Ramp}	Output voltage ramp time	Time from device starts switching to power good	0.8	1	1.5	ms
V_{PG}	Power good lower threshold	V_{VOS} referenced to V_{OUT} nominal	85%	91%	96%	
	Power good upper threshold	V_{VOS} referenced to V_{OUT} nominal	103%	111%	120%	
$V_{PG,OL}$	Low-level output voltage	$I_{sink} = 1\text{ mA}$, PG pin version			0.36	V
$t_{PG,DLY}$	Power good deglitch delay	Rising and falling edges		34		μs
OUTPUT						
V_{OUT}	Output voltage accuracy	Fixed voltage operation, FPWM, no load, $T_J = 0^{\circ}\text{C}$ to 85°C	- 1%		1%	
		Fixed voltage operation, FPWM, no load	- 2%		2%	
V_{FB}	Feedback voltage	Adjustable voltage operation	594	600	606	mV
$I_{FB,LKG}$	Input leakage into FB pin	Adjustable voltage operation, $V_{FB} = 0.6\text{ V}$		0.01	0.4	μA
$I_{VOS,LKG}$	Input leakage current into VOS pin	Output discharge disabled, $V_{VOS} = 1.8\text{ V}$		0.2	2.5	μA
R_{DIS}	Output discharge resistor at VOS pin			3.5		Ω
	Load regulation	$V_{OUT} = 0.9\text{ V}$, FPWM		0.04		%/A
POWER SWITCH						
$R_{DS(on)}$	High-side FET on-resistance			11		m Ω
	Low-side FET on-resistance			10.5		m Ω
I_{LIM}	High-side FET forward current limit	TPS62865	5	5.5	6	A
		TPS62867	7	7.7	8.5	A
	Low-side FET forward current limit	TPS62865		4.5		A
		TPS62867		6.5		A
	Low-side FET negative current limit	TPS62865, TPS62867		- 3		A
f_{SW}	PWM switching frequency	$I_{OUT} = 1\text{ A}$, $V_{OUT} = 0.9\text{ V}$		2.4		MHz

7.6 Typical Characteristics

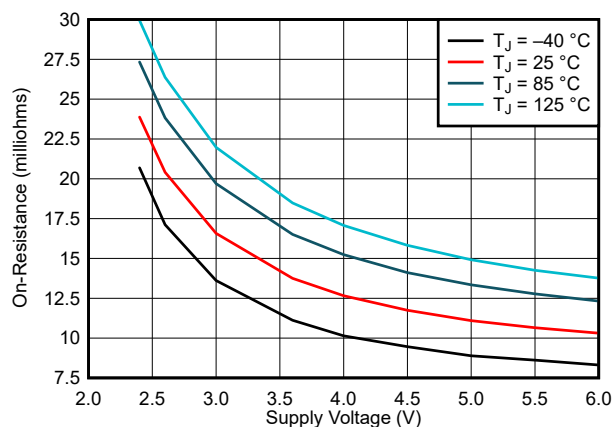


图 7-1. High-Side FET On-Resistance

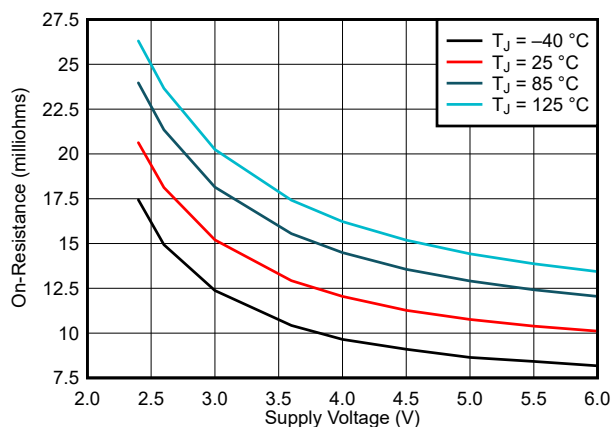


图 7-2. Low-Side FET On-Resistance

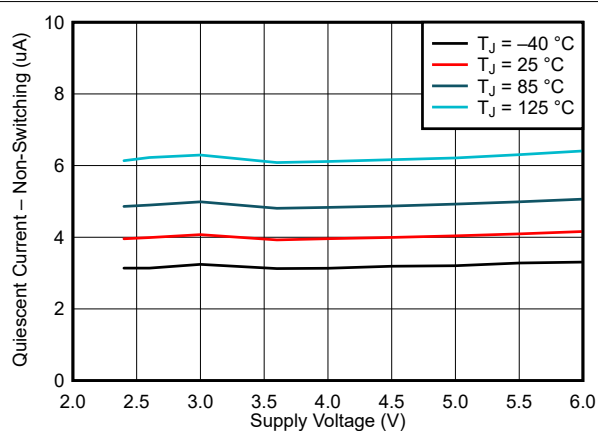


图 7-3. Quiescent Current

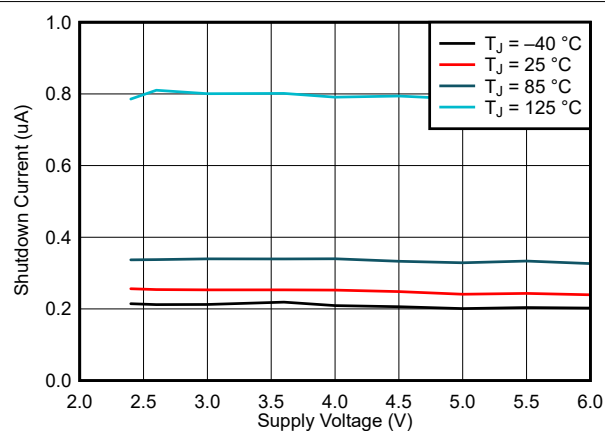


图 7-4. Shutdown Current

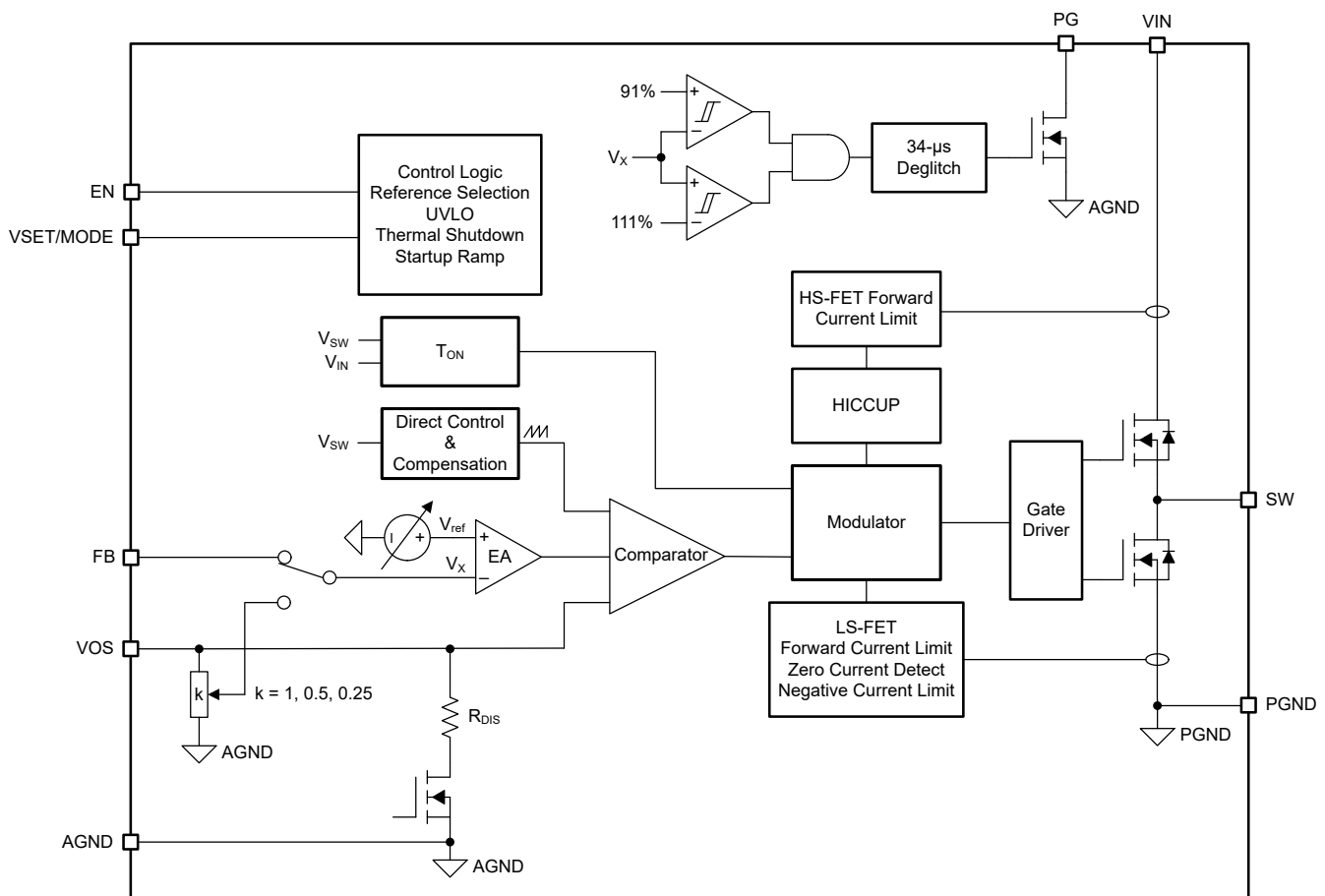
8 Detailed Description

8.1 Overview

The TPS62865 and TPS62867 synchronous step-down converters use the DCS-Control (Direct Control with Seamless transition into Power Save Mode) topology. This is an advanced regulation topology that combines the advantages of hysteretic and current-mode control schemes.

The DCS-Control topology operates in PWM (pulse width modulation) mode for medium to heavy load conditions and in Power Save Mode at light load currents. In PWM mode, the converter operates with its 2.4-MHz nominal switching frequency, having a controlled frequency variation over the input voltage range. Since DCS-Control supports both operation modes (PWM and PFM) within a single building block, the transition from PWM mode to Power Save Mode is seamless and does not affect on the output voltage. The devices offer both excellent DC voltage and superior load transient regulation combined with very low output voltage ripple.

8.2 Functional Block Diagram



8.3 Feature Description

8.3.1 Power Save Mode

As the load current decreases, the device enters Power Save Mode (PSM) operation. PSM occurs when the inductor current becomes discontinuous, which is when it reaches 0 A during a switching cycle. Power Save Mode is based on a fixed on-time architecture, as shown in [方程式 1](#).

$$t_{ON} = \frac{V_{OUT}}{V_{IN}} \times 416 \text{ ns} \quad (1)$$

In Power Save Mode, the output voltage rises slightly above the nominal output voltage. This effect is minimized by increasing the output capacitor or inductor value.

When V_{IN} decreases to typically 15% above V_{OUT} , the TP6286x does enter Power Save Mode, regardless of the load current. The device maintains output regulation in PWM mode.

8.3.2 Forced PWM Mode

Connecting the VSET/MODE pin to logic high after the start-up, the device switches at 2.4 MHz, even with a light load. This reduces the output voltage ripple and allows simple filtering of the switching frequency for noise-sensitive applications. Efficiency at light load is lower in Forced PWM mode (FPWM).

8.3.3 100% Duty Cycle Mode Operation

There is no limitation for small duty cycles since even at very low duty cycles, the switching frequency is reduced as needed to always ensure a proper regulation.

If the output voltage level comes close to the input voltage, the device enters 100% mode. While the high-side switch is constantly turned on, the low-side switch is switched off. The difference between V_{IN} and V_{OUT} is determined by the voltage drop across the high-side MOSFET and the DC resistance of the inductor. The minimum V_{IN} that is needed to maintain a specific V_{OUT} value is estimated as:

$$V_{IN,MIN} = V_{OUT} + (R_{DS(on)} + R_L)I_{OUT,MAX} \quad (2)$$

where

- $V_{IN,MIN}$ is the minimum input voltage to maintain an output voltage
- $I_{OUT,MAX}$ is the maximum output current
- $R_{DS(on)}$ is the high-side FET ON-resistance
- R_L is the inductor ohmic resistance (DCR)

8.3.4 Soft Start

After enabling the device, there is a 700- μ s (typical) enable delay (t_{delay}) before the device starts switching. After the enable delay, an internal soft start-up circuitry ramps up the output voltage with a period of 1 ms (t_{Ramp}). This avoids excessive inrush current and creates a smooth output voltage rise-slope. It also prevents excessive voltage drops of primary cells and rechargeable batteries with high internal impedance. The device is able to start into a pre-biased output capacitor. It starts with the applied bias voltage and ramps the output voltage to its nominal value.

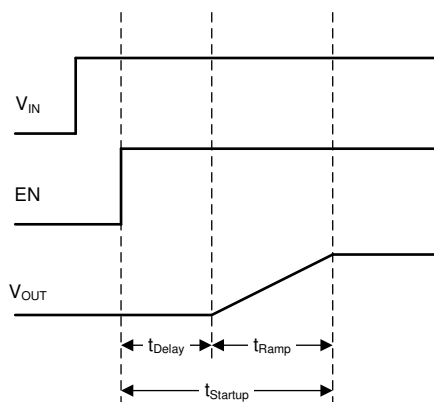


图 8-1. Start-up Sequence

8.3.5 Switch Current Limit and HICCUP Short-Circuit Protection

The switch current limit prevents the device from high inductor current and from drawing excessive current from the battery or input voltage rail. Excessive current might occur with a shorted or saturated inductor or a heavy load or shorted output circuit condition. If the inductor current reaches the threshold I_{LIM} , cycle by cycle, the high-

side MOSFET is turned off and the low-side MOSFET is turned on, while the inductor current ramps down to the low-side MOSFET current limit.

When the high-side MOSFET current limit is triggered 32 times, the device stops switching. The device then automatically re-starts with an internal soft start-up after a typical delay time of 128 μ s has passed. This is named HICCUP short-circuit protection. The device repeats this mode until the high load condition disappears.

8.3.6 Undervoltage Lockout

To avoid mis-operation of the device at low input voltages, undervoltage lockout (UVLO) is implemented when the input voltage is lower than V_{UVLO} . The device stops switching and the output voltage discharge is active when the device is in UVLO. When the input voltage recovers, the device automatically returns to operation with an internal soft start-up.

8.3.7 Thermal Shutdown

When the junction temperature exceeds T_{JSD} , the device goes into thermal shutdown, stops switching, and activates the output voltage discharge. When the device temperature falls below the threshold by the hysteresis, the device returns to normal operation automatically with an internal soft start-up. During thermal shutdown, the internal register values are kept.

8.4 Device Functional Modes

8.4.1 Enable and Disable (EN)

The device is enabled by setting the EN pin to a logic high. In shutdown mode (EN = low), the internal power switches and the entire control circuitry are turned off. An internal switch smoothly discharges the output through the VOS pin in shutdown mode. Do not leave the EN pin floating.

8.4.2 Power Good (PG)

The device has an open-drain power-good pin, which is specified to sink up to 1 mA. The power-good output requires a pullup resistor connecting to any voltage rail less than 5.5 V. The PG has a deglitch delay of 34 μ s.

The PG signal can be used for sequencing of multiple rails by connecting it to the EN pin of other converters. Leave the PG pin unconnected when not used.

表 8-1. PG Function Table

DEVICE CONDITIONS		PG PIN
Enable	$0.9 \times V_{OUT_NOM} \leq V_{VOS} \leq 1.1 \times V_{OUT_NOM}$	Hi-Z
	$V_{VOS} < 0.9 \times V_{OUT_NOM}$ or $V_{VOS} > 1.1 \times V_{OUT_NOM}$	Low
Shutdown	EN = low	Low
Thermal shutdown	$T_J > T_{JSD}$	Low
UVLO	$1.8 \text{ V} < V_{IN} < V_{UVLO}$	Low
Power supply removal	$V_{IN} < 1.8 \text{ V}$	Undefined

8.4.3 Voltage Setting and Mode Selection (VSET/MODE)

During the enable delay (t_{Delay}), the device configuration is set by an external resistor connected to the VSET/MODE pin through an internal R2D (resistor to digital) converter. 表 8-2 shows the options.

The R2D converter has an internal current source that applies current through the external resistor and an internal ADC that reads back the resulting voltage level. Depending on the level, the output voltage is set. Once this R2D conversion is finished, the current source is turned off to avoid current flowing through the external resistor. Ensure that there is no additional current path or capacitance greater than 30 pF from this pin to GND during R2D conversion. Otherwise, a false value is set.

表 8-2. Voltage Selection Table

RESISTOR (E96 SERIES, $\pm 1\%$ ACCURACY) AT VSET/MODE PIN	FIXED OR ADJUSTABLE OUTPUT VOLTAGE
249 k Ω or logic high	adjustable
205 k Ω	3.30 V
162 k Ω	2.50 V
133 k Ω	1.80 V
105 k Ω	1.50 V
86.6 k Ω	reserved
68.1 k Ω	1.35 V
56.2 k Ω	1.20 V
44.2 k Ω	1.10 V
36.5 k Ω	1.05 V
28.7 k Ω	1.00 V
23.7 k Ω	0.95 V
18.7 k Ω	0.90 V
15.4 k Ω	0.85 V
12.1 k Ω	0.80 V
10 k Ω or logic low	adjustable

When the device is set as a fixed output voltage converter, then FB pin must be connected to the output directly. Refer to 图 8-2.

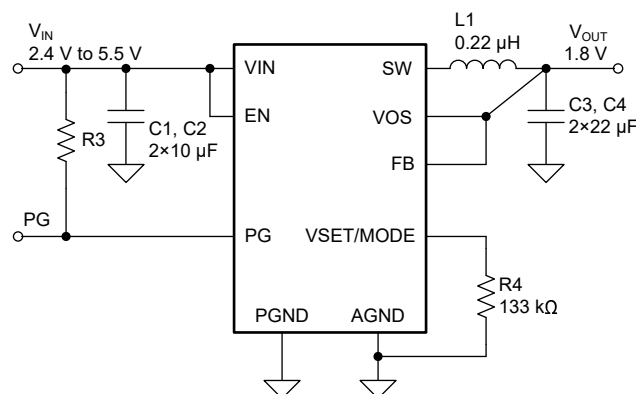


图 8-2. Fixed Start-up Output Voltage Application Circuit

After the start-up period (t_{Startup}), a different operation mode can be selected. When VSET/MODE is high, the device operates in forced PWM mode, otherwise the device operates in power save mode.

9 Application and Implementation

Note

Information in the following applications sections is not part of the TI component specification, and TI does not warrant its accuracy or completeness. TI's customers are responsible for determining suitability of components for their purposes, as well as validating and testing their design implementation to confirm system functionality.

9.1 Application Information

The following section discusses the design of the external components to complete the power supply design for several input and output voltage options by using typical applications as a reference.

9.2 Typical Application

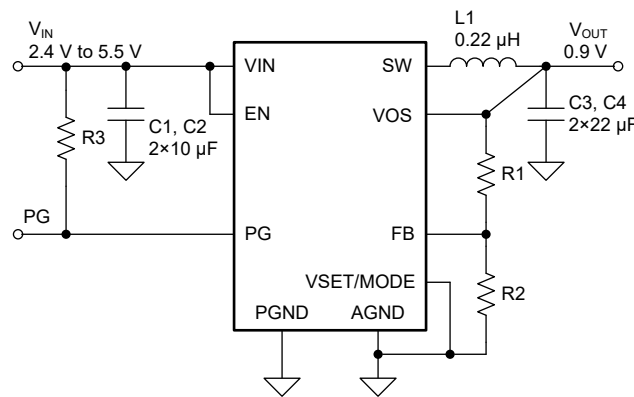


图 9-1. Typical Application

9.2.1 Design Requirements

For this design example, use the parameters listed in 表 9-1 as the input parameters.

表 9-1. Design Parameters

DESIGN PARAMETER	EXAMPLE VALUE
Input voltage	2.4 V to 5.5 V
Output voltage	0.9 V
Maximum output current	6 A

表 9-2 lists the components used for the example.

表 9-2. List of Components

REFERENCE	DESCRIPTION	MANUFACTURER ⁽¹⁾
C1, C2	10 µF, ceramic capacitor, 10 V, X7R, size 0603, GRM188Z71A106KA73	Murata
C3, C4	22 µF, ceramic capacitor, 6.3 V, X7R, size 0805, GRM21BZ70J226ME44	Murata
L1	0.22 µH, power inductor, XAL4020-221ME (12 A, 5.81 mΩ)	Coilcraft
R1	Depending on the output voltage, chip resistor, 1/16 W, 1%, size 0402	Std
R2	100 kΩ, chip resistor, 1/16 W, 1%, size 0402	Std
R3	100 kΩ, chip resistor, 1/16 W, 1%, size 0402	Std

(1) See the [Third-party Products](#) disclaimer.

9.2.2 Detailed Design Procedure

9.2.2.1 Custom Design With WEBENCH® Tools

[Click here](#) to create a custom design using the TPS62865 device with the WEBENCH® Power Designer.

[Click here](#) to create a custom design using the TPS62867 device with the WEBENCH® Power Designer.

1. Start by entering the input voltage (V_{IN}), output voltage (V_{OUT}), and output current (I_{OUT}) requirements.
2. Optimize the design for key parameters such as efficiency, footprint, and cost using the optimizer dial.
3. Compare the generated design with other possible solutions from Texas Instruments.

The WEBENCH Power Designer provides a customized schematic along with a list of materials with real-time pricing and component availability.

In most cases, these actions are available:

- Run electrical simulations to see important waveforms and circuit performance
- Run thermal simulations to understand board thermal performance
- Export customized schematic and layout into popular CAD formats
- Print PDF reports for the design, and share the design with colleagues

Get more information about WEBENCH tools at www.ti.com/WEBENCH.

9.2.2.2 Setting The Output Voltage

The output voltage is set by an external resistor divider according to [方程式 3](#):

$$R1 = R2 \left(\frac{V_{OUT}}{V_{FB}} - 1 \right) = R2 \left(\frac{V_{OUT}}{0.6 \text{ V}} - 1 \right) \quad (3)$$

$R2$ must not be higher than $200 \text{ k}\Omega$ to achieve high efficiency at light load while providing acceptable noise sensitivity.

For the fixed output versions, connect the FB pin to the output. $R1$ and $R2$ are not needed.

9.2.2.3 Output Filter Design

The inductor and the output capacitor together provide a low-pass filter. To simplify this process, [表 9-3](#) outlines possible inductor and capacitor value combinations for most applications. Checked cells represent combinations that are proven for stability by simulation and lab testing. Further combinations must be checked for each individual application.

表 9-3. Matrix of Output Capacitor and Inductor Combinations

NOMINAL L [μH] ⁽²⁾	NOMINAL C_{OUT} [μF] ⁽³⁾			
	10	2 × 22 or 47	3 × 22	150
0.22		+(1)	+	+

(1) This LC combination is the standard value and recommended for most applications.

(2) Inductor tolerance and current derating is anticipated. The effective inductance can vary by 20% and – 30%.

(3) Capacitance tolerance and bias voltage derating is anticipated. The effective capacitance can vary by 20% and – 50%.

9.2.2.4 Inductor Selection

The main parameter for the inductor selection is the inductor value, then the saturation current of the inductor. To calculate the maximum inductor current under static load conditions, [方程式 4](#) is given.

$$I_{L,MAX} = I_{OUT,MAX} + \frac{\Delta I_L}{2}$$

$$\Delta I_L = V_{OUT} \left(\frac{1 - \frac{V_{OUT}}{V_{IN}}}{L \times f_{SW}} \right) \quad (4)$$

where

- $I_{OUT,MAX}$ is the maximum output current
- ΔI_L is the inductor current ripple
- f_{SW} is the switching frequency
- L is the inductor value

It is recommended to choose a saturation current for the inductor that is approximately 20% to 30% higher than $I_{L,MAX}$. In addition, DC resistance and size must also be taken into account when selecting an appropriate inductor. 表 9-4 lists recommended inductors.

表 9-4. List of Recommended Inductors

INDUCTANCE [μH] ⁽¹⁾	CURRENT RATING [A]	DIMENSIONS [L × W × H mm]	DC RESISTANCE [mΩ]	PART NUMBER
0.22	18.7	4 × 4 × 2	5.81	Coilcraft, XAL4020-221ME
0.24	6.6	2 × 1.6 × 1.2	13	Murata, DFE201612E-R24M

(1) See the [Third-party Products](#) disclaimer.

9.2.2.5 Capacitor Selection

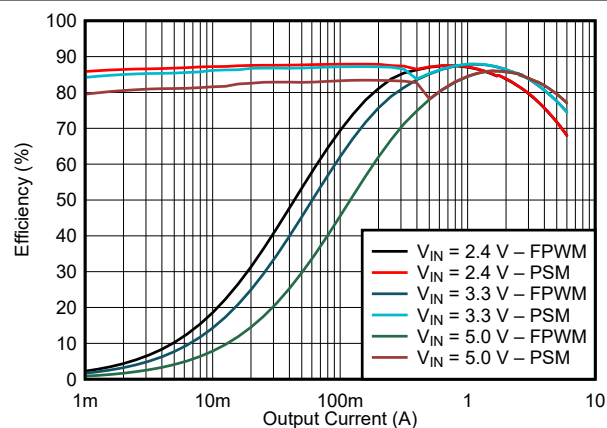
The input capacitor is the low-impedance energy source for the converters which helps to provide stable operation. A low-ESR multilayer ceramic capacitor is recommended for the best filtering and must be placed between VIN and GND as close as possible to those pins. For most applications, 8 μF of *effective*¹ capacitance is sufficient, however, a larger value reduces input current ripple.

The architecture of the device allows the use of tiny ceramic output capacitors with low equivalent series resistance (ESR). These capacitors provide low output voltage ripple and are recommended. To keep its low resistance up to high frequencies and to get narrow capacitance variation with temperature, TI recommends using X7R or X5R dielectrics. The recommended typical output capacitor value is 30 μF of *effective*¹ capacitance. This capacitance can vary over a wide range as outlined in the output filter selection table.

¹ The effective capacitance is the capacitance after tolerance, temperature, and DC bias effects have been considered.

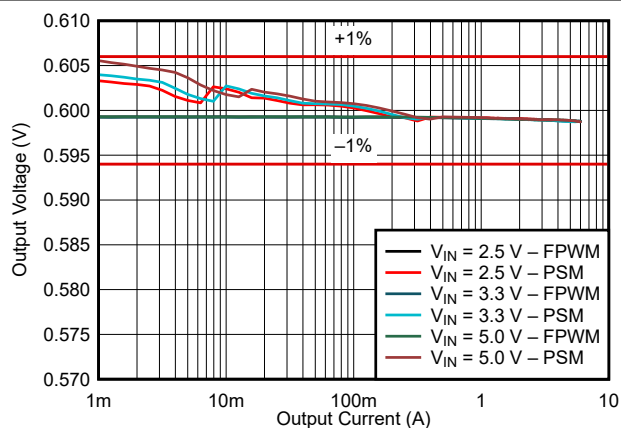
9.2.3 Application Curves

$V_{IN} = 5.0\text{ V}$, $V_{OUT} = 0.9\text{ V}$, $T_A = 25\text{ }^{\circ}\text{C}$, BOM = 表 9-2, unless otherwise noted.



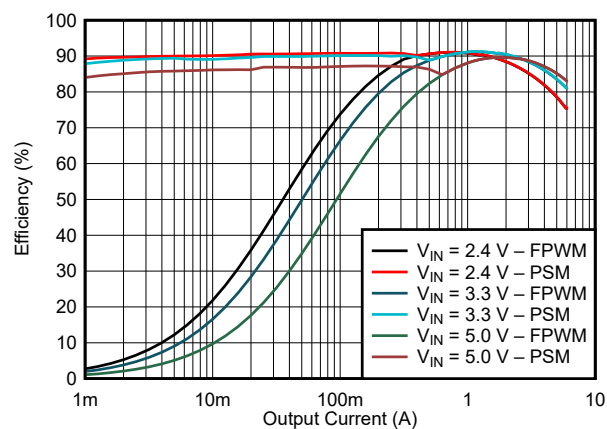
$V_{OUT} = 0.6\text{ V}$

图 9-2. Efficiency



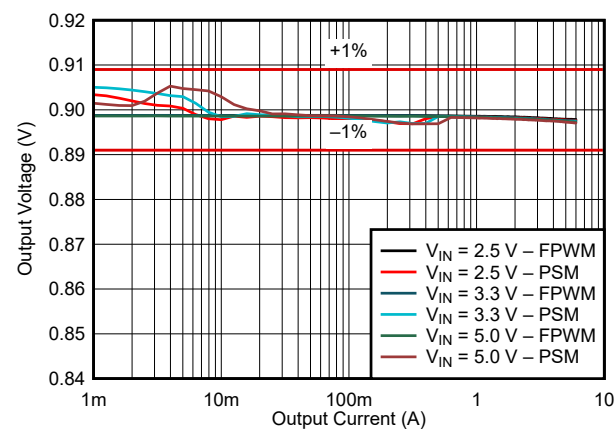
$V_{OUT} = 0.6\text{ V}$

图 9-3. Load Regulation



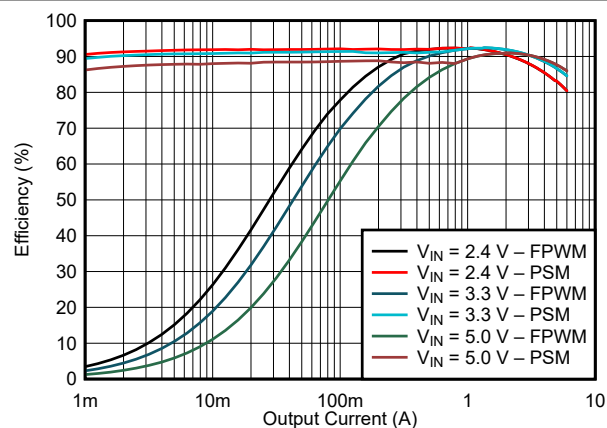
$V_{OUT} = 0.9\text{ V}$

图 9-4. Efficiency



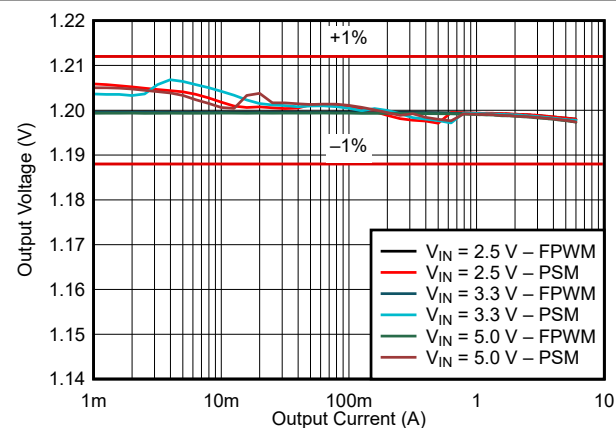
$V_{OUT} = 0.9\text{ V}$

图 9-5. Load Regulation



$V_{OUT} = 1.2\text{ V}$

图 9-6. Efficiency



$V_{OUT} = 1.2\text{ V}$

图 9-7. Load Regulation

9.2.3 Application Curves (continued)

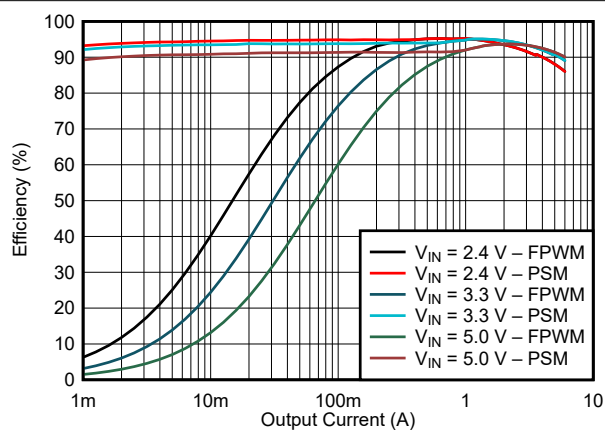
 $V_{OUT} = 1.8 \text{ V}$

图 9-8. Efficiency

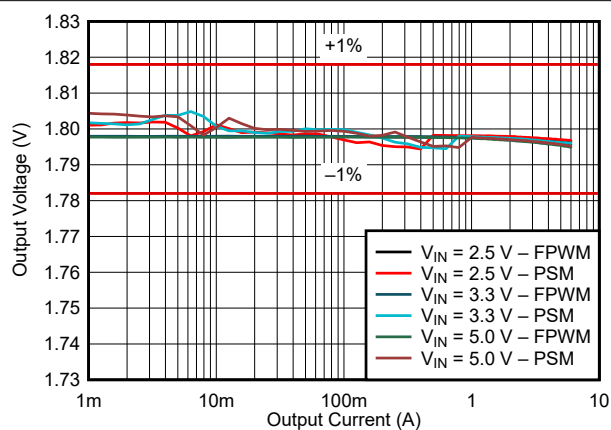
 $V_{OUT} = 1.8 \text{ V}$

图 9-9. Load Regulation

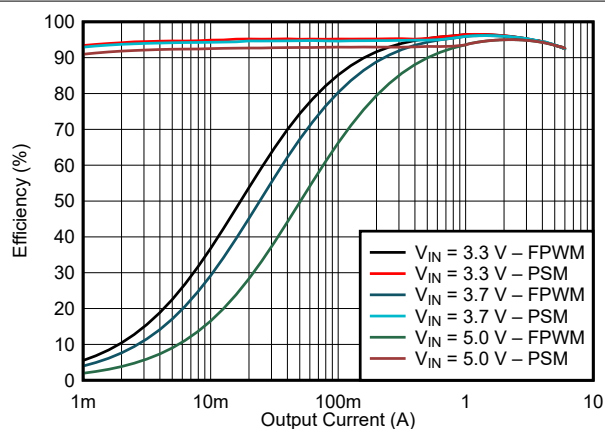
 $V_{OUT} = 2.5 \text{ V}$

图 9-10. Efficiency

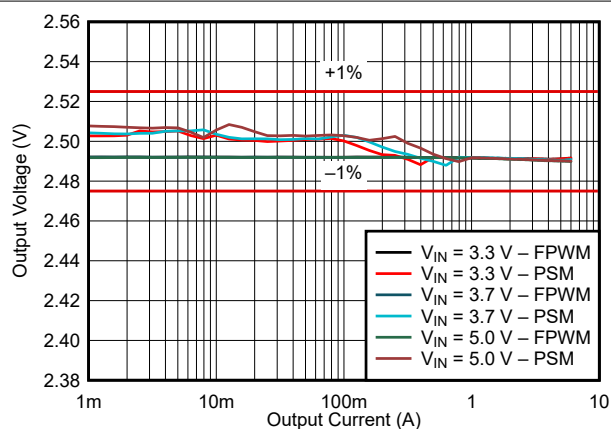
 $V_{OUT} = 2.5 \text{ V}$

图 9-11. Load Regulation

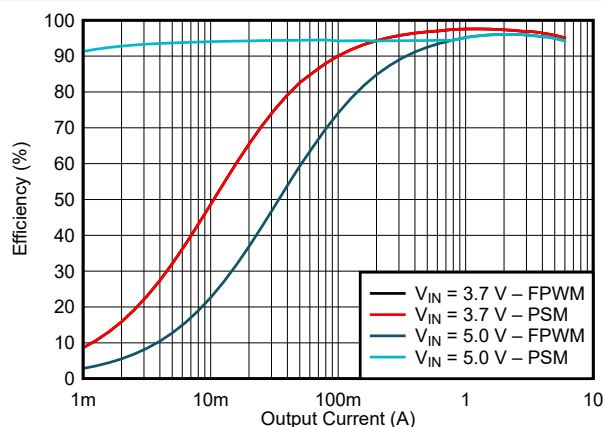
 $V_{OUT} = 3.3 \text{ V}$

图 9-12. Efficiency

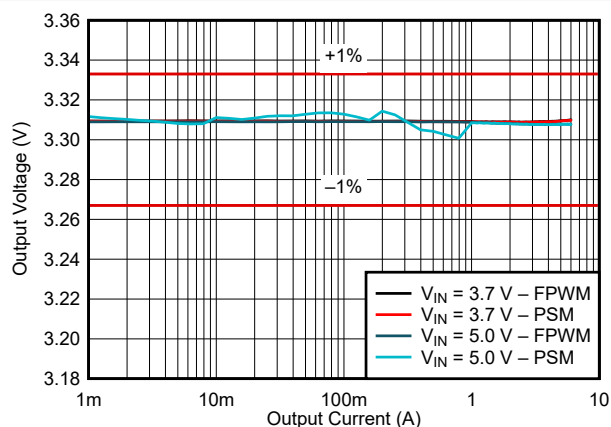
 $V_{OUT} = 3.3 \text{ V}$

图 9-13. Load Regulation

9.2.3 Application Curves (continued)

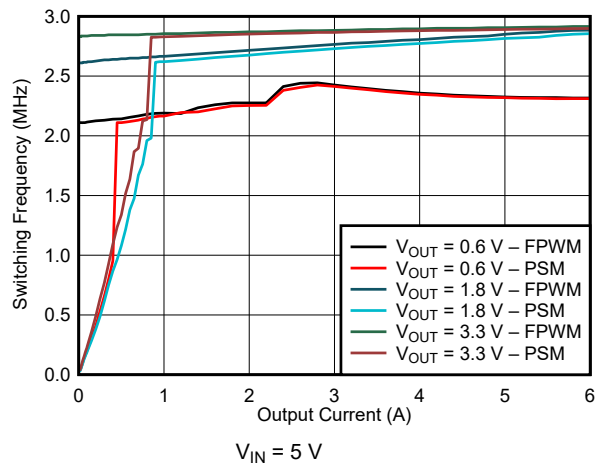


图 9-14. Switching Frequency

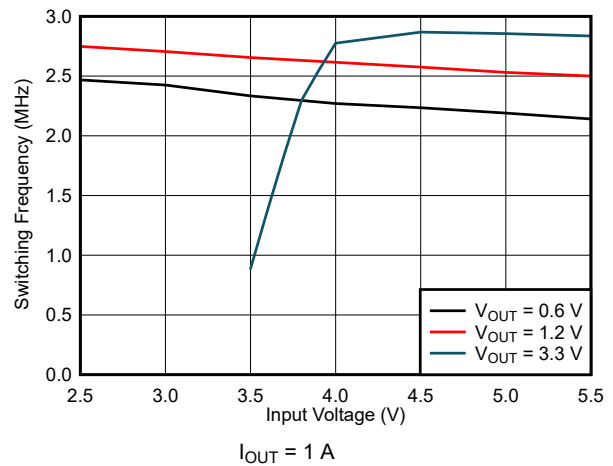


图 9-15. Switching Frequency

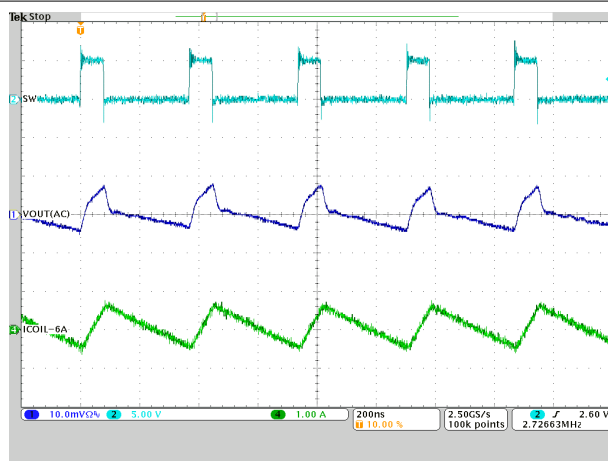


图 9-16. PWM Operation

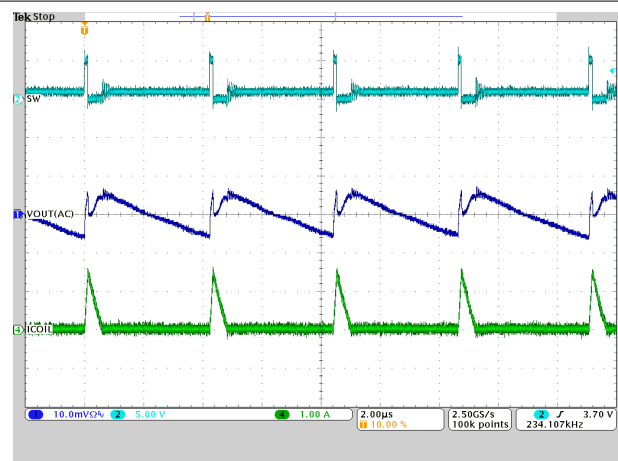


图 9-17. PSM Operation

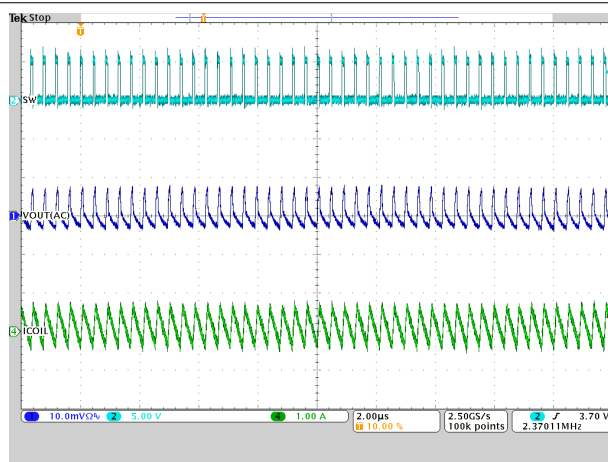


图 9-18. Forced-PWM Operation

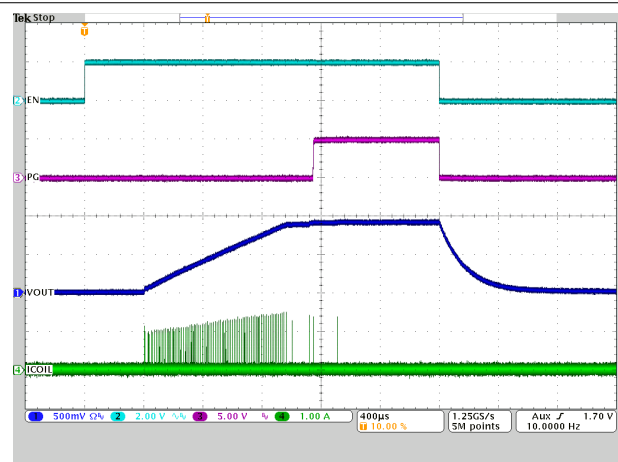


图 9-19. Startup with No-Load

9.2.3 Application Curves (continued)

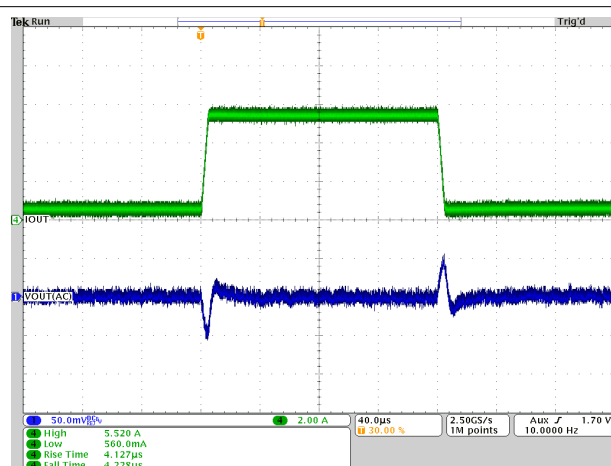

 $I_{OUT} = 0.6 \text{ A to } 5.4 \text{ A}$

图 9-20. Load Transient - PWM Operation

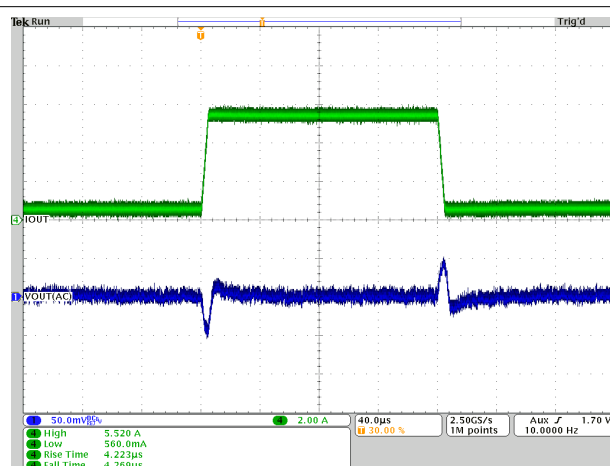

 $I_{OUT} = 0.6 \text{ A to } 5.4 \text{ A}$

图 9-21. Load Transient - PSM Operation

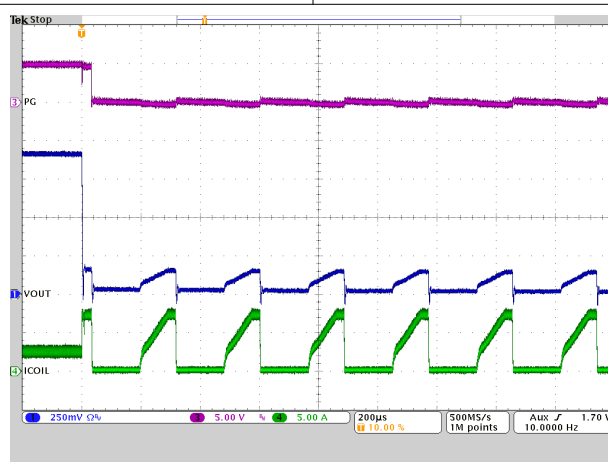

 $I_{OUT} = 1 \text{ A}$

图 9-22. HICCUP Short Circuit Protection

10 Power Supply Recommendations

The device is designed to operate from an input voltage supply range from 2.4 V to 5.5 V. Ensure that the input power supply has a sufficient current rating for the application.

11 Layout

11.1 Layout Guidelines

A proper layout is critical for the operation of any switched mode power supply, especially at high switching frequencies. The PCB layout of the TPS62865 and TPS62867 devices requires careful attention to ensure best performance. A poor layout can lead to issues like bad line and load regulation, instability, increased EMI radiation, and noise sensitivity. Refer to the [Five Steps to a Great PCB Layout for a Step-Down Converter](#) technical brief for a detailed discussion of general best practices. The following are specific recommendations for the TPS62865 and TPS62867:

- The input capacitor or capacitors must be placed as close as possible to the VIN and PGND pins of the device. This is the most critical component placement. Route the input capacitor or capacitors directly to the VIN and PGND pins, avoiding vias.
- Place the output inductor close to the SW pins. Minimize the copper area at the switch node.
- Place the output capacitor or capacitors ground close to the PGND pin and route it directly, avoiding vias. Minimize the length of the connection from the inductor to the output capacitor. Connect the VOS pin directly to the output capacitor.
- Sensitive traces, such as the connections to the VOS, FB, and VSEL pins, must be connected with short traces and be routed away from any noise source, such as the SW pin.
- Make the connections from the input voltage of the system and the connection to the load as wide as possible to minimize voltage drops.
- Have a solid ground plane between PGND and the input and output capacitor ground connections.
- The sensitive signal ground connections for the feedback voltage divider must be connected to a separate signal ground trace.

11.2 Layout Example

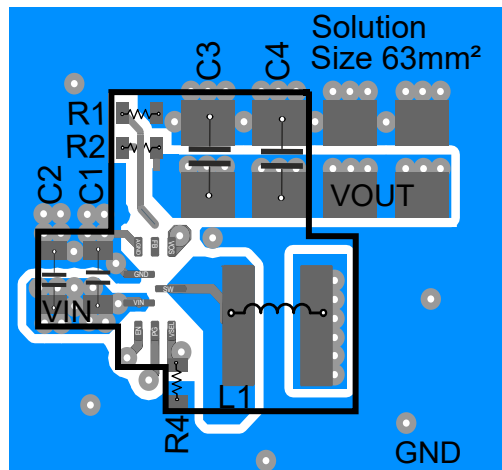


图 11-1. Layout Example

11.2.1 Thermal Considerations

After the layout recommendations for component placement and routing have been followed, the PCB design must focus on thermal performance. Thermal design is important and must be considered to remove the heat generated in the device during operation. The device junction temperature must stay below its maximum rated temperature of 125°C for correct operation.

Use wide traces and planes, especially to the PGND, VIN, and VOUT pins, and use vias to internal planes to improve the power dissipation capability of the design. If the application allows it, use airflow in the system to further improve cooling.

The [Thermal Information](#) table provides the thermal parameters of the device and its package based on the JEDEC standard 51-7. See the [Semiconductor and IC Package Thermal Metrics](#) application report for a detailed explanation of each parameter. In addition to the JEDEC standard, the thermal information table also contains the thermal parameters of the EVM. The EVM better reflects a real-world PCB design with thicker traces connecting to the device.

12 Device and Documentation Support

12.1 Device Support

12.1.1 第三方产品免责声明

TI 发布的与第三方产品或服务有关的信息，不能构成与此类产品或服务或保修的适用性有关的认可，不能构成此类产品或服务单独或与任何 TI 产品或服务一起的表示或认可。

12.1.2 Development Support

12.1.2.1 Custom Design With WEBENCH® Tools

[Click here](#) to create a custom design using the TPS62865 device with the WEBENCH® Power Designer.

[Click here](#) to create a custom design using the TPS62867 device with the WEBENCH® Power Designer.

1. Start by entering the input voltage (V_{IN}), output voltage (V_{OUT}), and output current (I_{OUT}) requirements.
2. Optimize the design for key parameters such as efficiency, footprint, and cost using the optimizer dial.
3. Compare the generated design with other possible solutions from Texas Instruments.

The WEBENCH Power Designer provides a customized schematic along with a list of materials with real-time pricing and component availability.

In most cases, these actions are available:

- Run electrical simulations to see important waveforms and circuit performance
- Run thermal simulations to understand board thermal performance
- Export customized schematic and layout into popular CAD formats
- Print PDF reports for the design, and share the design with colleagues

Get more information about WEBENCH tools at www.ti.com/WEBENCH.

12.2 Documentation Support

12.2.1 Related Documentation

For related documentation, see the following:

- Texas Instruments, [Thermal Characteristics of Linear and Logic Packages Using JEDEC PCB Designs](#) application report
- Texas Instruments, [Semiconductor and IC Package Thermal Metrics](#) application report

12.3 支持资源

TI E2E™ 支持论坛是工程师的重要参考资料，可直接从专家获得快速、经过验证的解答和设计帮助。搜索现有解答或提出自己的问题可获得所需的快速设计帮助。

链接的内容由各个贡献者“按原样”提供。这些内容并不构成 TI 技术规范，并且不一定反映 TI 的观点；请参阅 TI 的《使用条款》。

12.4 Trademarks

TI E2E™ is a trademark of Texas Instruments.

® are registered trademarks of Texas Instruments.

所有商标均为其各自所有者的财产。

12.5 静电放电警告



静电放电 (ESD) 会损坏这个集成电路。德州仪器 (TI) 建议通过适当的预防措施处理所有集成电路。如果不遵守正确的处理和安装程序，可能会损坏集成电路。

ESD 的损坏小至导致微小的性能降级，大至整个器件故障。精密的集成电路可能更容易受到损坏，这是因为非常细微的参数更改都可能会导致器件与其发布的规格不相符。

12.6 术语表

TI 术语表

本术语表列出并解释了术语、首字母缩略词和定义。

13 Mechanical, Packaging, and Orderable Information

The following pages include mechanical, packaging, and orderable information. This information is the most current data available for the designated devices. This data is subject to change without notice and revision of this document. For browser-based versions of this data sheet, refer to the left-hand navigation.

PACKAGING INFORMATION

Orderable part number	Status (1)	Material type (2)	Package Pins	Package qty Carrier	RoHS (3)	Lead finish/ Ball material (4)	MSL rating/ Peak reflow (5)	Op temp (°C)	Part marking (6)
TPS62865RQYR	Active	Production	VQFN-HR (RQY) 9	3000 LARGE T&R	Yes	SN	Level-2-260C-1 YEAR	-40 to 125	2EAH
TPS62865RQYR.A	Active	Production	VQFN-HR (RQY) 9	3000 LARGE T&R	Yes	SN	Level-2-260C-1 YEAR	-40 to 125	2EAH
TPS62867RQYR	Active	Production	VQFN-HR (RQY) 9	3000 LARGE T&R	Yes	SN	Level-2-260C-1 YEAR	-40 to 125	2DWH
TPS62867RQYR.A	Active	Production	VQFN-HR (RQY) 9	3000 LARGE T&R	Yes	SN	Level-2-260C-1 YEAR	-40 to 125	2DWH

⁽¹⁾ **Status:** For more details on status, see our [product life cycle](#).

⁽²⁾ **Material type:** When designated, preproduction parts are prototypes/experimental devices, and are not yet approved or released for full production. Testing and final process, including without limitation quality assurance, reliability performance testing, and/or process qualification, may not yet be complete, and this item is subject to further changes or possible discontinuation. If available for ordering, purchases will be subject to an additional waiver at checkout, and are intended for early internal evaluation purposes only. These items are sold without warranties of any kind.

⁽³⁾ **RoHS values:** Yes, No, RoHS Exempt. See the [TI RoHS Statement](#) for additional information and value definition.

⁽⁴⁾ **Lead finish/Ball material:** Parts may have multiple material finish options. Finish options are separated by a vertical ruled line. Lead finish/Ball material values may wrap to two lines if the finish value exceeds the maximum column width.

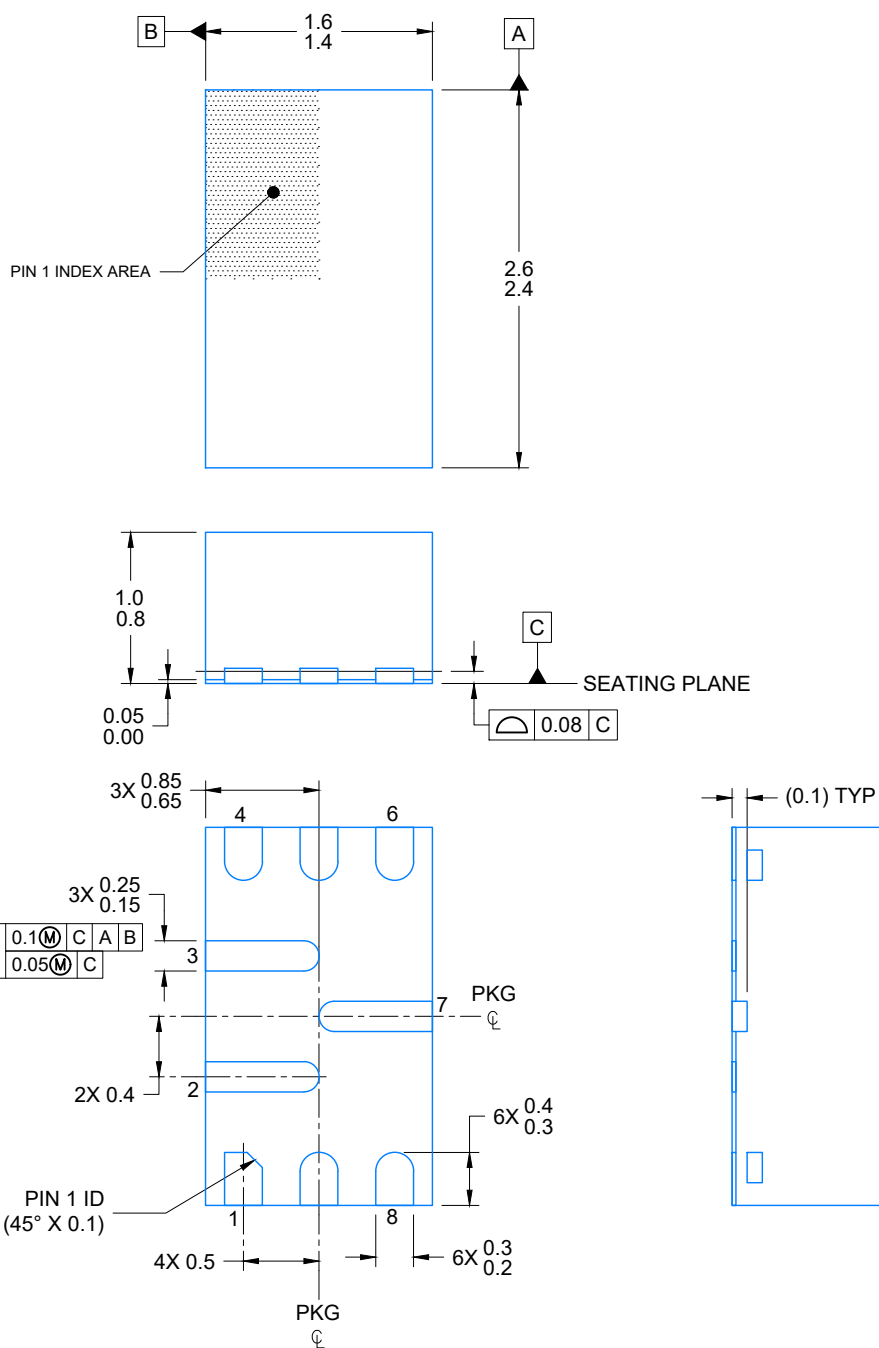
⁽⁵⁾ **MSL rating/Peak reflow:** The moisture sensitivity level ratings and peak solder (reflow) temperatures. In the event that a part has multiple moisture sensitivity ratings, only the lowest level per JEDEC standards is shown. Refer to the shipping label for the actual reflow temperature that will be used to mount the part to the printed circuit board.

⁽⁶⁾ **Part marking:** There may be an additional marking, which relates to the logo, the lot trace code information, or the environmental category of the part.

Multiple part markings will be inside parentheses. Only one part marking contained in parentheses and separated by a "~" will appear on a part. If a line is indented then it is a continuation of the previous line and the two combined represent the entire part marking for that device.

Important Information and Disclaimer: The information provided on this page represents TI's knowledge and belief as of the date that it is provided. TI bases its knowledge and belief on information provided by third parties, and makes no representation or warranty as to the accuracy of such information. Efforts are underway to better integrate information from third parties. TI has taken and continues to take reasonable steps to provide representative and accurate information but may not have conducted destructive testing or chemical analysis on incoming materials and chemicals. TI and TI suppliers consider certain information to be proprietary, and thus CAS numbers and other limited information may not be available for release.

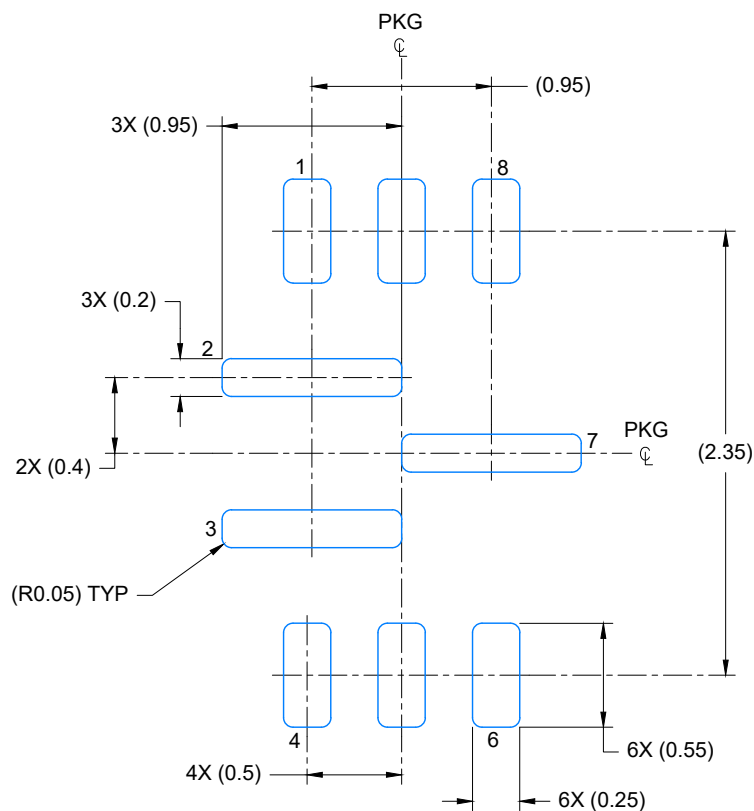
In no event shall TI's liability arising out of such information exceed the total purchase price of the TI part(s) at issue in this document sold by TI to Customer on an annual basis.



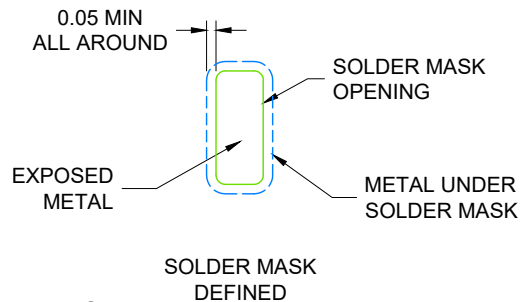
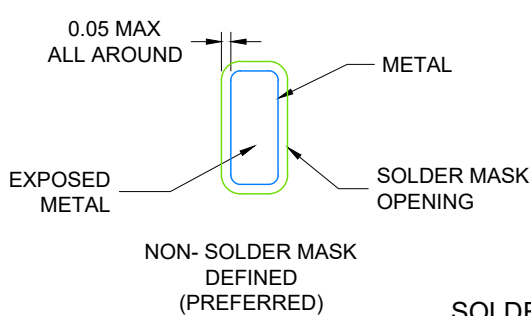
4225639/A 03/2020

NOTES:

1. All linear dimensions are in millimeters. Any dimensions in parenthesis are for reference only. Dimensioning and tolerancing per ASME Y14.5M.
2. This drawing is subject to change without notice.



LAND PATTERN EXAMPLE
EXPOSED METAL SHOWN
SCALE: 25X



SOLDER MASK DETAILS
NOT TO SCALE

4225639/A 03/2020

NOTES: (continued)

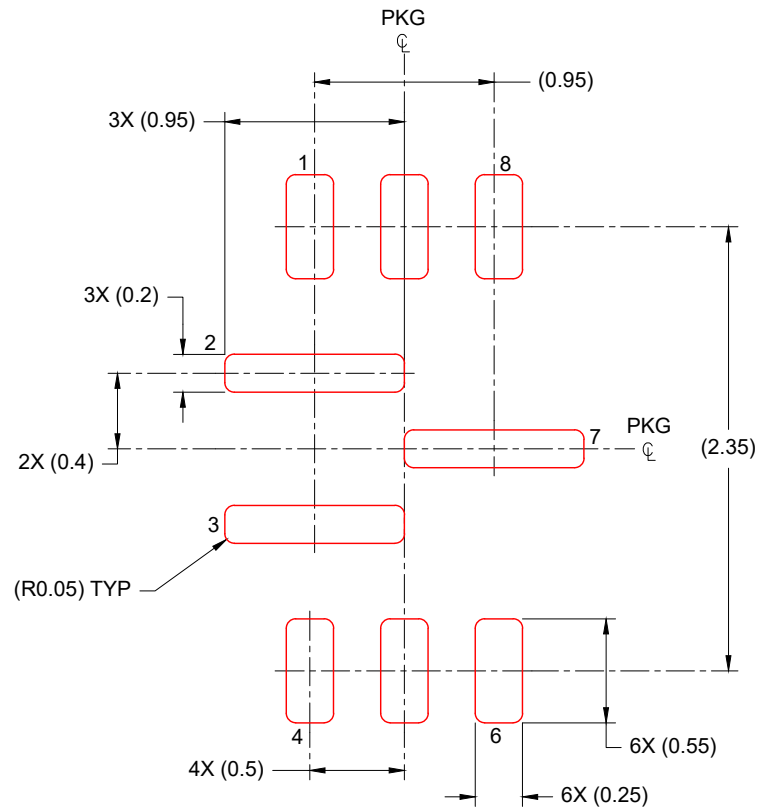
- For more information, see Texas Instruments literature number SLUA271 (www.ti.com/lit/sluea271).
- Solder mask tolerances between and around signal pads can vary based on board fabrication site.

EXAMPLE STENCIL DESIGN

RQY0009A

VQFN-HR - 1 mm max height

PLASTIC QUAD FLATPACK- NO LEAD



SOLDER PASTE EXAMPLE
 BASED ON 0.1mm THICK STENCIL
 SCALE: 25X

4225639/A 03/2020

NOTES: (continued)

5. Laser cutting apertures with trapezoidal walls and rounded corners may offer better paste release. IPC-7525 may have alternate design recommendations.

重要通知和免责声明

TI“按原样”提供技术和可靠性数据（包括数据表）、设计资源（包括参考设计）、应用或其他设计建议、网络工具、安全信息和其他资源，不保证没有瑕疵且不做任何明示或暗示的担保，包括但不限于对适销性、与某特定用途的适用性或不侵犯任何第三方知识产权的暗示担保。

这些资源可供使用 TI 产品进行设计的熟练开发人员使用。您将自行承担以下全部责任：(1) 针对您的应用选择合适的 TI 产品，(2) 设计、验证并测试您的应用，(3) 确保您的应用满足相应标准以及任何其他安全、安保法规或其他要求。

这些资源如有变更，恕不另行通知。TI 授权您仅可将这些资源用于研发本资源所述的 TI 产品的相关应用。严禁以其他方式对这些资源进行复制或展示。您无权使用任何其他 TI 知识产权或任何第三方知识产权。对于因您对这些资源的使用而对 TI 及其代表造成的任何索赔、损害、成本、损失和债务，您将全额赔偿，TI 对此概不负责。

TI 提供的产品受 [TI 销售条款](#)、[TI 通用质量指南](#) 或 [ti.com](#) 上其他适用条款或 TI 产品随附的其他适用条款的约束。TI 提供这些资源并不会扩展或以其他方式更改 TI 针对 TI 产品发布的适用的担保或担保免责声明。除非德州仪器 (TI) 明确将某产品指定为定制产品或客户特定产品，否则其产品均为按确定价格收入目录的标准通用器件。

TI 反对并拒绝您可能提出的任何其他或不同的条款。

版权所有 © 2025，德州仪器 (TI) 公司

最后更新日期：2025 年 10 月