

LP5813 具有自主控制功能的同步升压 4 × 3 矩阵 RGB LED 驱动器

1 特性

- 工作电压范围：
 - 输入电压 (V_{IN}) 范围：0.5V 至 5.5V
 - 启动时的最小输入电压为 1.8V
 - 逻辑引脚兼容 1.8V、3.3V 和 5V 电压
- 高效同步升压转换器
 - 输出电压 (V_{OUT}) 范围：3V 至 5.5V
 - 140m Ω (HS)/60m Ω (LS) MOSFET
 - 1.6A 谷值开关电流限值
 - $V_{IN} = 4.2V$ 、 $V_{OUT} = 5.0V$ 且 $I_{OUT} = 300mA$ 时效率为 95%
 - $V_{IN} > V_{OUT}$ 设置时进入直通模式
 - 在关断期间真正断开输入域输出之间的连接
- 时间交叉多路复用 (TCM) 拓扑：
 - 驱动多达 12 个 LED 或 4 个 RGB LED
 - 多路复用比率为 1/4、1/3、1/2、1
 - 支持直接、TCM 和混合驱动模式
- 4 个高精度恒定电流阱：
 - 每个电流阱为 0.1mA 至 51mA
 - 器件间误差：最大 $\pm 5\%$
 - 通道间误差：最大 $\pm 5\%$
 - 超低余量电压：25.5mA 时为 110mV (典型值)；51mA 时为 210mV (典型值)
 - 可为每个 LED 配置 PWM 相移
- 超低功耗：
 - 关断：当 EN 为低电平时， $I_{SD} = 0.1 \mu A$ (典型值)
 - 待机：当 EN 为高电平且 CHIP_EN 为 0 (保留数据) 时， $I_{STB} = 26 \mu A$ (典型值)
 - 有效：当 LED 电流为 25.5mA 时， $I_{NOR} = 0.45mA$ (典型值)
- 模拟调光 (电流增益控制)
 - 全局 1 位最大电流 (MC)：25.5 mA 或 51 mA
 - 单独 8 位点电流 (DC) 设置
- PWM 调光频率高达 24kHz，无可闻噪声
 - 单独的 8 位 PWM 调光分辨率
 - 线性或指数调光曲线
- 自主动画引擎控制
- 针对各个 LED 点进行开路/短路检测
- 集成的重影消除功能
- 1MHz (最大值) I²C 接口
- 工作温度范围：-40°C 至 85°C

2 应用

用于以下设备的 LED 动画和指示：

- 便携式和可穿戴电子产品 - 耳塞和充电盒、电子烟、智能手表
- 游戏和家庭娱乐 - 智能扬声器、RGB 鼠标、VR 耳机和控制器
- 物联网 (IOT) - 电子标签、可视门铃
- 网络 - 路由器、接入点
- 工业 HMI - 电动汽车充电器、工厂自动化

3 说明

LP5813 是一款具有自主动画引擎控制功能的同步升压 4 × 3 矩阵 RGB LED 驱动器。该器件非常适合支持输入电压范围为 0.5V 至 5.5V 的电池供电应用，并且在点亮 LED 时具有 0.4mA (典型值) 的超低正常工作电流。

集成式同步升压转换器可保持出色的效率，并在宽工作电压范围内保持 LED 亮度稳定。可为不同的 LED 正向电压选择输出电压，范围为 3V 至 5.5V，阶跃为 0.1V。升压转换器不仅可为器件本身驱动的 LED 供电，还可为系统中的其他负载供电。如需绕过升压转换器， V_{OUT} 将用作 LED 驱动器块的电源输入。

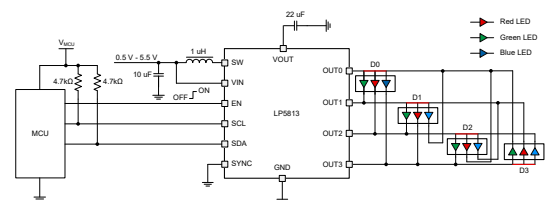
采用的时间交叉多路复用 (TCM) 结构使用 4 个输出引脚分别控制 12 个 LED 点。高侧扫描开关和低侧电流阱都包含在一个输出中。对于空间受限的系统，已尽可能减小解决方案总尺寸。

自主动画引擎可以显著减少控制器的实时负载。每个 LED 都可通过相关寄存器进行配置，从而实现生动绚丽的照明效果。该器件可生成 6MHz 时钟信号，并将其用于同步多个器件之间的照明效果。

封装信息

器件型号	封装	封装尺寸 (标称值)
LP5813	DSBGA (12)	1.84 mm × 1.43 mm
	WSON (12) ⁽¹⁾	3mm x 3mm

(1) 产品预发布



简化版原理图



Table of Contents

1 特性	1	9.4 Device Functional Modes.....	26
2 应用	1	9.5 Programming.....	28
3 说明	1	9.6 Register Map Table.....	29
4 Revision History	2	10 Application and Implementation	47
5 Device Comparison	3	10.1 Application Information.....	47
6 Pin Configuration and Functions	4	10.2 Typical Application.....	47
7 Specifications	5	10.3 Power Supply Recommendations.....	57
7.1 Absolute Maximum Ratings.....	5	10.4 Layout.....	57
7.2 ESD Ratings.....	5	11 Device and Documentation Support	59
7.3 Recommended Operating Conditions.....	5	11.1 Documentation Support.....	59
7.4 Thermal Information.....	5	11.2 接收文档更新通知.....	59
7.5 Electrical Characteristics.....	6	11.3 支持资源.....	59
7.6 Timing Requirements.....	8	11.4 Trademarks.....	59
8 Typical Characteristics	10	11.5 静电放电警告.....	59
9 Detailed Description	12	11.6 术语表.....	59
9.1 Overview.....	12	12 Mechanical, Packaging, and Orderable	
9.2 Functional Block Diagram.....	13	Information	60
9.3 Feature Description.....	13		

4 Revision History

注：以前版本的页码可能与当前版本的页码不同

DATE	REVISION	NOTES
September 2023	*	Initial Release

5 Device Comparison

PART NUMBER	Max LED Number	Power Stage	PACKAGE	MATERIAL	I ² C Chip Address		SOFTWARE COMPATIBLE
					Bit 4	Bit 3	
LP5813	12	Boost	DSBGA-12	LP5813AYBHR	0	0	Yes
				LP5813BYBHR	0	1	
				LP5813CYBHR	1	0	
				LP5813DYBHR	1	1	
			WSON-12	LP5813ADRRR	0	0	
				LP5813BDRRR	0	1	
				LP5813CDRRR	1	0	
				LP5813DDRRR	1	1	
LP5812	12	Linear	DSBGA-9	LP5812AYBHR	0	0	
				LP5812BYBHR	0	1	
				LP5812CYBHR	1	0	
				LP5812DYBHR	1	1	
			WSON-8	LP5812ADSDR	0	0	
				LP5812BDSDR	0	1	
				LP5812CDSDR	1	0	
				LP5812DDSDR	1	1	
LP5811	4	Boost	DSBGA-12	LP5811AYBHR	0	0	
				LP5811BYBHR	0	1	
				LP5811CYBHR	1	0	
				LP5811DYBHR	1	1	
			WSON-12	LP5811ADRRR	0	0	
				LP5811BDRRR	0	1	
				LP5811CDRRR	1	0	
				LP5811DDRRR	1	1	
LP5810	4	Linear	DSBGA-9	LP5810AYBHR	0	0	
				LP5810BYBHR	0	1	
				LP5810CYBHR	1	0	
				LP5810DYBHR	1	1	
			WSON-8	LP5810ADSDR	0	0	
				LP5810BDSDR	0	1	
				LP5810CDSDR	1	0	
				LP5810DDSDR	1	1	

6 Pin Configuration and Functions

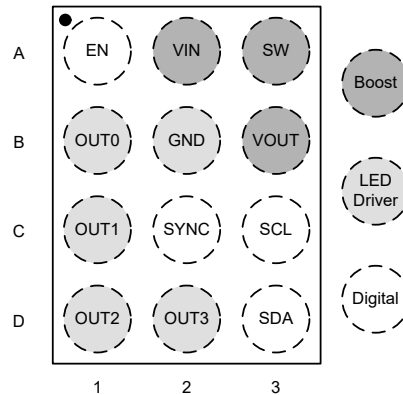


图 6-1. LP5813 YBH Package 12-Pin DSBGA Top View

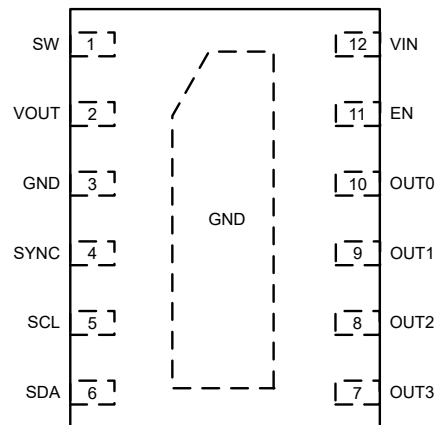


图 6-2. LP5813 DRR Package 12-Pin WSON Top View

表 6-1. Pin Functions

PIN			TYPE ⁽¹⁾	DESCRIPTION
NAME	YBH	DRR		
EN	A1	11	I	Enable signal for the integrated boost converter.
VIN	A2	12	P	Power supply of the boost converter.
SW	A3	1	P	Switch pin of the integrated boost converter, which connects to the drain of low-side power FET and source of high-side rectifier FET. Connecting the inductor to this pin.
OUT0	B1	10	O	Output 0 which contains current sink and scan FET. If not used, this pin must be floating.
GND	B2	3	G	Ground. This pin must connect to the ground plane.
VOUT	B3	2	P	Boost converter output and power supply of the LED driver blocks. Connect to external power supply directly if need to bypass the boost converter.
OUT1	C1	9	O	Output 1 which contains current sink and scan FET. If not used, this pin must be floating.
SYNC	C2	4	I/O	Clock synchronous among multiple devices. If not used, this pin can connect to ground to save power.
SCL	C3	5	I	I ² C serial interface clock input.
OUT2	D1	8	O	Output 2 which contains current sink and scan FET. If not used, this pin must be floating.
OUT3	D2	7	O	Output 3 which contains current sink and scan FET. If not used, this pin must be floating.
SDA	D3	6	I/O	I ² C serial interface data input/output.

(1) G: Ground Pin; P: Power Pin; I: Input Pin; I/O: Input/Output Pin; O: Output Pin.

7 Specifications

7.1 Absolute Maximum Ratings

over operating free-air temperature range (unless otherwise noted)⁽¹⁾

		MIN	MAX	UNIT
Voltage range at terminals	VIN, SW, VOUT, VCC	– 0.3	6	V
	SW spike at 10 ns	– 0.7	8	V
	SW spike at 1 ns	– 0.7	9	V
	OUT0, OUT1, OUT2, OUT3	– 0.3	6	V
	EN, SCL, SDA, SYNC	– 0.3	6	V
T _J	Junction temperature	– 40	150	°C
T _{stg}	Storage temperature	– 65	150	°C

- (1) Operation outside the Absolute Maximum Ratings may cause permanent device damage. Absolute Maximum Ratings do not imply functional operation of the device at these or any other conditions beyond those listed under Recommended Operating Conditions. If used outside the Recommended Operating Conditions but within the Absolute Maximum Ratings, the device may not be fully functional, and this may affect device reliability, functionality, performance, and shorten the device lifetime.

7.2 ESD Ratings

			VALUE	UNIT
V _(ESD)	Electrostatic discharge	Human body model (HBM), per ANSI/ESDA/ JEDEC JS-001, all pins ⁽¹⁾	±4000	V
		Charged device model (CDM), per ANSI/ESDA/ JEDEC JS-002, all pins ⁽²⁾	±1000	

- (1) JEDEC document JEP155 states that 500-V HBM allows safe manufacturing with a standard ESD control process.
(2) JEDEC document JEP157 states that 250-V CDM allows safe manufacturing with a standard ESD control process.

7.3 Recommended Operating Conditions

over operating free-air temperature range (unless otherwise noted)

		MIN	NOM	MAX	UNIT
V _{IN}	Input voltage range	0.5		5.5	V
V _{OUT}	Output voltage setting range	3		5.5	V
L	Effective inductance range	0.37	1	2.9	μH
C _{IN}	Effective input capacitance range	1	4.7		μF
C _{OUT}	Effective output capacitance range	4	10	1000	μF
T _A	Ambient temperature	– 40		85	°C
T _J	Operating junction temperature	– 40		125	°C

7.4 Thermal Information

THERMAL METRIC ⁽¹⁾		LP5813	UNIT
		YBH (DSBGA)	
		12 PINS	
R _{θJA}	Junction-to-ambient thermal resistance	92.1	°C/W
R _{θJC(top)}	Junction-to-case (top) thermal resistance	0.4	°C/W
R _{θJB}	Junction-to-board thermal resistance	25.9	°C/W
Ψ _{JT}	Junction-to-top characterization parameter	0.2	°C/W

THERMAL METRIC ⁽¹⁾		LP5813	UNIT
		YBH (DSBGA)	
		12 PINS	
Ψ_{JB}	Junction-to-board characterization parameter	25.8	°C/W

- (1) For more information about traditional and new thermal metrics, see the [Semiconductor and IC Package Thermal Metrics](#) application report.

7.5 Electrical Characteristics

Unless specified otherwise, typical characteristics apply over the full ambient temperature range ($-40^{\circ}\text{C} < T_A < +85^{\circ}\text{C}$), $V_{IN} = 3.6\text{ V}$, $V_{CC} = 5\text{ V}$, $C_{IN} = 1\text{ }\mu\text{F}$, $C_{OUT} = 1\text{ }\mu\text{F}$.

PARAMETER		TEST CONDITIONS	MIN	TYP	MAX	UNIT
Power Supply						
V_{IN}	Input voltage range		0.5		5.5	V
V_{IN_UVLO}	Under-voltage lockout threshold	V_{IN} rising		1.7	1.8	V
		V_{IN} falling		0.4	0.5	V
I_{SD}	Shutdown current into VIN and SW pin (LP5811/3)	IC disabled (EN = Low), $V_{IN} = 3.6\text{ V}$, $T_A = 25^{\circ}\text{C}$		0.1	0.35	μA
I_{STB}	Standby current into VCC pin (LP5810/2)	CHIP_EN = 0 (bit), $V_{CC} = 3.6\text{ V}$		25	28	μA
I_{STB}	Standby current into VIN and SW pin (LP5811/3)	CHIP_EN = 0 (bit), Boost enabled (EN = High), $V_{IN} = 3.6\text{ V}$, VOUT set to 3 V, Pass-through mode		26	29	μA
	Standby current into VOUT pin (LP5811/3)	CHIP_EN = 0 (bit), Boost disabled (EN = Low), VIN no supply, VOUT force to 5 V		25	28	μA
I_{NOR}	Normal operation current into VIN and SW pin (LP5811/3)	CHIP_EN = 1 (bit), Boost enabled (EN = High), $V_{IN} = 3.6\text{ V}$, VOUT set to 3 V, Pass-through mode, $I_{OUT0} = I_{OUT1} = I_{OUT2} = I_{OUT3} = 25.5\text{ mA}$ (MC = 0, DC = 255, PWM = 255)		0.45	0.65	mA
I_{NOR}	Normal operation current into VOUT pin (LP5811/3)	CHIP_EN = 1 (bit), Boost disabled (EN = Low), VOUT force to 3.6 V, $I_{OUT0} = I_{OUT1} = I_{OUT2} = I_{OUT3} = 25.5\text{ mA}$ (MC = 0, DC = 255, PWM = 255)		0.4	0.6	mA
I_{NOR}	Normal operation current into VCC pin (LP5810/2)	CHIP_EN = 1 (bit), $V_{CC} = 5\text{ V}$, $I_{OUT0} = I_{OUT1} = I_{OUT2} = I_{OUT3} = 25.5\text{ mA}$ (MC = 0, DC = 255, PWM = 255)		0.4	0.6	mA
Boost Output						
V_{OUT}	Output voltage setting range		3		5.5	V
V_{OVP}	Output over-voltage protection threshold	V_{OUT} rising	5.5	5.7	5.9	V
V_{OVP_HYS}	Over-voltage protection hysteresis			0.2		V
t_{SS}	Soft startup time	From active EN to VOUT regulation. $V_{IN} = 1.8\text{ V}$, $C_{OUT} = 22\text{ }\mu\text{F}$, $I_{VOUT} = 0\text{ mA}$		450		μs
Boost Power Switch						
$R_{DS(on)}$	High-side MOSFET on resistance	$V_{VOUT} = 5\text{ V}$		140		$\text{m}\Omega$
	Low-side MOSFET on resistance	$V_{VOUT} = 5\text{ V}$		60		$\text{m}\Omega$
f_{SW}	Switching frequency	$V_{IN} = 3.6\text{ V}$, VOUT set to 5.0 V, PWM mode		1		MHz
		$V_{IN} = 1.0\text{ V}$, VOUT set to 5.0 V, PFM mode		0.5		MHz
I_{LIM_SW}	Valley current limit	$V_{IN} = 3.6\text{ V}$, VOUT set to 5.0 V		1.6		A
I_{PRECHG}	Pre-charge current	$V_{IN} = 3.6\text{ V}$		350		mA
LED Driver Output						

Unless specified otherwise, typical characteristics apply over the full ambient temperature range ($-40^{\circ}\text{C} < T_A < +85^{\circ}\text{C}$), $V_{\text{IN}} = 3.6\text{ V}$, $V_{\text{CC}} = 5\text{ V}$, $C_{\text{IN}} = 1\text{ }\mu\text{F}$, $C_{\text{OUT}} = 1\text{ }\mu\text{F}$.

PARAMETER		TEST CONDITIONS	MIN	TYP	MAX	UNIT
$R_{\text{DS(on)SW}}$	Scan line switch MOSFET on resistance	$V_{\text{VOUT}} = 3\text{ V}$		1	1.4	Ω
$R_{\text{DS(on)SW}}$	Scan line switch MOSFET on resistance	$V_{\text{VOUT}} = 5\text{ V}$		0.7	1.1	Ω
I_{CS}	Constant current sink output range	$V_{\text{IN}} = 3.6\text{ V}$, V_{OUT} set to 5 V , $\text{MC} = 0$, $\text{manual_pwm_x} = \text{FFh}$ (100% ON)	0.1		25.5	mA
		$V_{\text{IN}} = 3.6\text{ V}$, V_{OUT} set to 5 V , $\text{MC} = 1$, $\text{manual_pwm_x} = \text{FFh}$ (100% ON)	0.2		51	mA
$I_{\text{CS_LKG}}$	Constant current sink leakage current	$V_{\text{IN}} = 3.6\text{ V}$, $\text{OUTx} = 1\text{ V}$, $\text{manual_pwm_x} = 0$ (0%)		0.1	1	μA
$I_{\text{ERR_D2D}}$	Device to device current error, $I_{\text{ERR_D2D}} = (I_{\text{AVE}} - I_{\text{SET}}) / I_{\text{SET}} \times 100\%$	All LEDs turn ON. Current set to 0.1 mA ($\text{max_current} = 0$, $\text{manual_dc_x} = 01\text{h}$, $\text{manual_pwm_x} = \text{FFh}$)	- 5		5	%
		All LEDs turn ON. Current set to 0.2 mA ($\text{max_current} = 1$, $\text{manual_dc_x} = 01\text{h}$, $\text{manual_pwm_x} = \text{FFh}$)	- 3		3	%
$I_{\text{ERR_D2D}}$	Device to device current error, $I_{\text{ERR_D2D}} = (I_{\text{AVE}} - I_{\text{SET}}) / I_{\text{SET}} \times 100\%$	All LEDs turn ON. Current set to 1 mA ($\text{max_current} = 0$, $\text{manual_dc_x} = 0\text{Ah}$, $\text{manual_pwm_x} = \text{FFh}$)	- 5		5	%
		All LEDs turn ON. Current set to 1 mA ($\text{max_current} = 1$, $\text{manual_dc_x} = 05\text{h}$, $\text{manual_pwm_x} = \text{FFh}$)	- 3		3	%
		All LEDs turn ON. Current set to 25.5 mA ($\text{max_current} = 0$, $\text{manual_dc_x} = \text{FFh}$, $\text{manual_pwm_x} = \text{FFh}$)	- 5		5	%
		All LEDs turn ON. Current set to 51 mA ($\text{max_current} = 1$, $\text{manual_dc_x} = \text{FFh}$, $\text{manual_pwm_x} = \text{FFh}$)	- 3		3	%
$I_{\text{ERR_C2C}}$	Channel to Channel current error $I_{\text{ERR_C2C}} = (I_{\text{OUTx}} - I_{\text{AVE}}) / I_{\text{AVE}} \times 100\%$	All LEDs turn ON. Current set to 0.1 mA ($\text{max_current} = 0$, $\text{manual_dc_x} = 01\text{h}$, $\text{manual_pwm_x} = \text{FFh}$)	- 5		5	%
		All LEDs turn ON. Current set to 0.2 mA ($\text{max_current} = 1$, $\text{manual_dc_x} = 01\text{h}$, $\text{manual_pwm_x} = \text{FFh}$)	- 3		3	%
$I_{\text{ERR_C2C}}$	Channel to Channel current error $I_{\text{ERR_C2C}} = (I_{\text{OUTx}} - I_{\text{AVE}}) / I_{\text{AVE}} \times 100\%$	All LEDs turn ON. Current set to 1 mA ($\text{max_current} = 0$, $\text{manual_dc_x} = 0\text{Ah}$, $\text{manual_pwm_x} = \text{FFh}$)	- 5		5	%
		All LEDs turn ON. Current set to 1 mA ($\text{max_current} = 1$, $\text{manual_dc_x} = 05\text{h}$, $\text{manual_pwm_x} = \text{FFh}$)	- 3		3	%
		All LEDs turn ON. Current set to 25.5 mA ($\text{max_current} = 0$, $\text{manual_dc_x} = \text{FFh}$, $\text{manual_pwm_x} = \text{FFh}$)	- 5		5	%
		All LEDs turn ON. Current set to 51 mA ($\text{max_current} = 1$, $\text{manual_dc_x} = \text{FFh}$, $\text{manual_pwm_x} = \text{FFh}$)	- 3		3	%
V_{HR}	LED driver output hearroom voltage	All LEDs turn ON. Current set to 25.5 mA ($\text{max_current} = 0$, $\text{manual_dc_x} = \text{FFh}$)		0.11	0.15	V
		All LEDs turn ON. Current set to 51 mA ($\text{max_current} = 1$, $\text{manual_dc_x} = \text{FFh}$)		0.21	0.28	V
$f_{\text{LED_PWM}}$	LED PWM frequency	$\text{pwm_fre} = 0$		24		kHz
		$\text{pwm_fre} = 1$		12		kHz
f_{OSC}	Internal oscillator frequency	$\text{vsync_out_en} = 1$		6		MHz
Logic Interface						

Unless specified otherwise, typical characteristics apply over the full ambient temperature range ($-40^{\circ}\text{C} < T_A < +85^{\circ}\text{C}$), $V_{IN} = 3.6\text{ V}$, $V_{CC} = 5\text{ V}$, $C_{IN} = 1\text{ }\mu\text{F}$, $C_{OUT} = 1\text{ }\mu\text{F}$.

PARAMETER		TEST CONDITIONS	MIN	TYP	MAX	UNIT
V_{EN_H}	EN logic high	$V_{IN} > 1.8\text{ V}$	1.2			V
V_{EN_L}	EN logic low	$V_{IN} > 1.8\text{ V}$			0.35	V
V_{IH_LOGIC}	High level input voltage of SDA, SCL, SYNC		1.4			V
V_{IL_LOGIC}	Low level input voltage of SDA, SCL, SYNC				0.4	V
V_{OH_LOGIC}	High level output voltage of SYNC		$V_{VOUT} - 0.2$			V
V_{OL_LOGIC}	Low level output voltage of SDA, SYNC				0.4	V
Protection						
T_{SD}	Thermal shutdown threshold for LED driver part	T_J rising		150		$^{\circ}\text{C}$
T_{SD}	Thermal shutdown threshold for Boost converter part	T_J rising		155		$^{\circ}\text{C}$
T_{SD_HYS}	Thermal shutdown hysteresis	T_J falling below T_{SD}		15		$^{\circ}\text{C}$
V_{LOD_TH}	LED open detection threshold	Current set to 25.5 mA (max_current = 0, manual_dc_x = FFh)	70	90	110	mV
V_{LOD_TH}	LED open detection threshold	Current set to 51 mA (max_current = 1, manual_dc_x = FFh)	150	180	220	mV
V_{LSD_TH}	LED short detection threshold	lsd_th = 00h	$0.32 \times V_{OUT}$	$0.35 \times V_{OUT}$	$0.38 \times V_{OUT}$	V
		lsd_th = 01h	$0.42 \times V_{OUT}$	$0.45 \times V_{OUT}$	$0.48 \times V_{OUT}$	V
		lsd_th = 10h	$0.52 \times V_{OUT}$	$0.55 \times V_{OUT}$	$0.58 \times V_{OUT}$	V
		lsd_th = 11h	$0.62 \times V_{OUT}$	$0.65 \times V_{OUT}$	$0.68 \times V_{OUT}$	V

7.6 Timing Requirements

Unless specified otherwise, typical characteristics apply over the full ambient temperature range ($-40^{\circ}\text{C} < T_A < +85^{\circ}\text{C}$), $V_{IN} = 3.6\text{ V}$, $V_{CC} = 5\text{ V}$, $C_{IN} = 1\text{ }\mu\text{F}$, $C_{OUT} = 1\text{ }\mu\text{F}$.

I ² C Timing Requirements		MIN	NOM	MAX	UNIT
Standard-mode					
f_{SCL}	SCL clock frequency	0		100	kHz
t_{HD_STA}	Hold time (repeated) START condition. After this period, the first clock pulse is generated.	4			μs
t_{LOW}	LOW period of the SCL clock	4.7			μs
t_{HIGH}	HIGH period of the SCL clock	4			μs
t_{SU_STA}	Set-up time for a repeated START condition	4.7			μs
t_{HD_DAT}	Data hold time	0			μs
t_{SU_DAT}	Data set-up time	250			ns
t_r	Rise time of both SDA and SCL signals			1000	ns
t_f	Fall time of both SDA and SCL signals			300	ns
t_{SU_STO}	Set-up time for STOP condition	4			μs
t_{BUF}	Bus free time between a STOP and START condition	4.7			μs
C_b	Capacitive load for each bus line			400	pF
Fast-mode					
f_{SCL}	SCL clock frequency	0		400	kHz

Unless specified otherwise, typical characteristics apply over the full ambient temperature range ($-40^{\circ}\text{C} < T_A < +85^{\circ}\text{C}$), $V_{IN} = 3.6\text{ V}$, $V_{CC} = 5\text{ V}$, $C_{IN} = 1\text{ }\mu\text{F}$, $C_{OUT} = 1\text{ }\mu\text{F}$.

I ² C Timing Requirements		MIN	NOM	MAX	UNIT
t _{HD_STA}	Hold time (repeated) START condition. After this period, the first clock pulse is generated.	0.6			μs
t _{LOW}	LOW period of the SCL clock	1.3			μs
t _{HIGH}	HIGH period of the SCL clock	0.6			μs
t _{SU_STA}	Set-up time for a repeated START condition	0.6			μs
t _{HD_DAT}	Data hold time	0			μs
t _{SU_DAT}	Data set-up time	100			ns
t _r	Rise time of both SDA and SCL signals			300	ns
t _f	Fall time of both SDA and SCL signals			300	ns
t _{SU_STO}	Set-up time for STOP condition	0.6			μs
t _{BUF}	Bus free time between a STOP and START condition	1.3			μs
C _b	Capacitive load for each bus line			400	pF
Fast-mode Plus					
f _{SCL}	SCL clock frequency	0		1000	kHz
t _{HD_STA}	Hold time (repeated) START condition. After this period, the first clock pulse is generated.	0.26			μs
t _{LOW}	LOW period of the SCL clock	0.5			μs
t _{HIGH}	HIGH period of the SCL clock	0.26			μs
t _{SU_STA}	Set-up time for a repeated START condition	0.26			μs
t _{HD_DAT}	Data hold time	0			μs
t _{SU_DAT}	Data set-up time	50			ns
t _r	Rise time of both SDA and SCL signals			120	ns
t _f	Fall time of both SDA and SCL signals			120	ns
t _{SU_STO}	Set-up time for STOP condition	0.26			μs
t _{BUF}	Bus free time between a STOP and START condition	0.5			μs
C _b	Capacitive load for each bus line			550	pF
Misc. Timing Requirements					
f _{CLK_EX}	VSYNC input clock frequency		6		MHz

8 Typical Characteristics

Unless specified otherwise, typical characteristics apply over the full ambient temperature range ($-40^{\circ}\text{C} < T_A < +85^{\circ}\text{C}$), $V_{IN} = 3.6\text{ V}$, $C_{IN} = 1\text{ }\mu\text{F}$, $C_{OUT} = 1\text{ }\mu\text{F}$

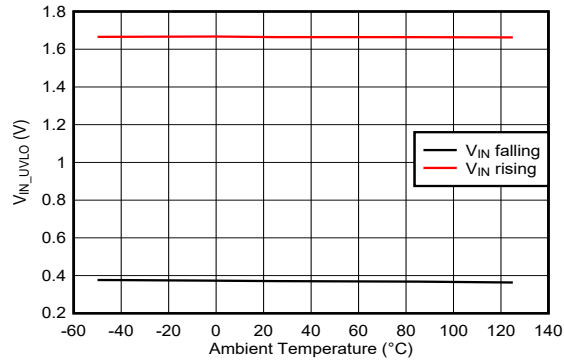


图 8-1. VIN UVLO Rising and Falling Thresholds

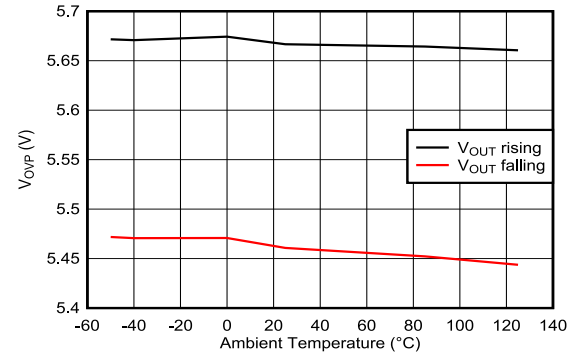


图 8-2. VOUT OVP Thresholds

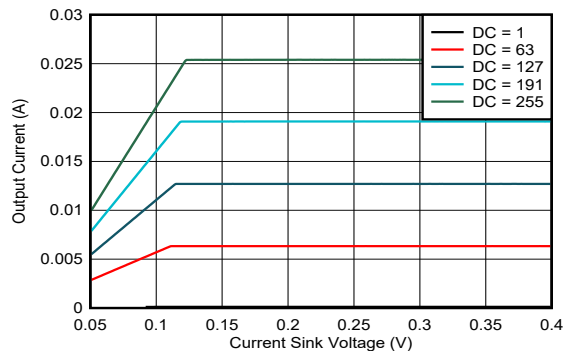


图 8-3. Current Sinks Voltage vs Current(MC=0)

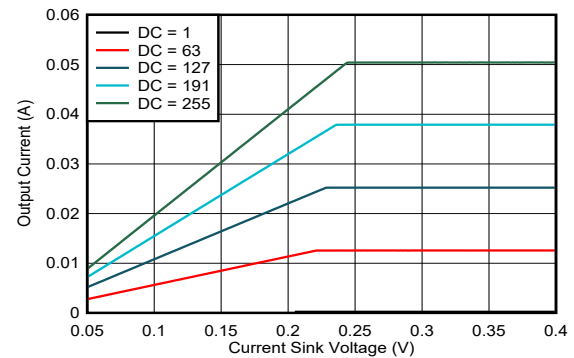


图 8-4. Current Sinks Voltage vs Current(MC=1)

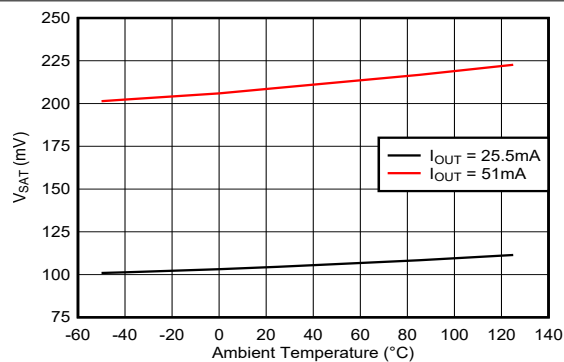


图 8-5. V_{SAT} vs Temperature

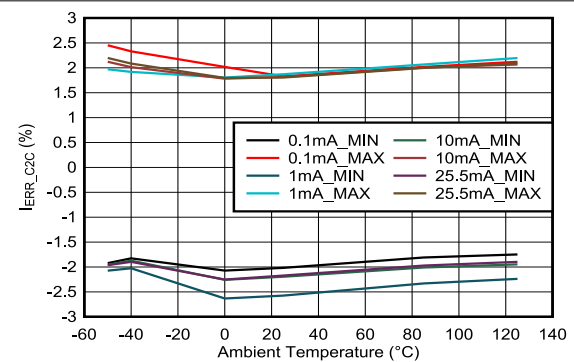


图 8-6. Channel-to-Channel Current Accuracy vs Temperature(MC=0)

8 Typical Characteristics (continued)

Unless specified otherwise, typical characteristics apply over the full ambient temperature range ($-40^{\circ}\text{C} < T_A < +85^{\circ}\text{C}$), $V_{IN} = 3.6\text{ V}$, $C_{IN} = 1\text{ }\mu\text{F}$, $C_{OUT} = 1\text{ }\mu\text{F}$

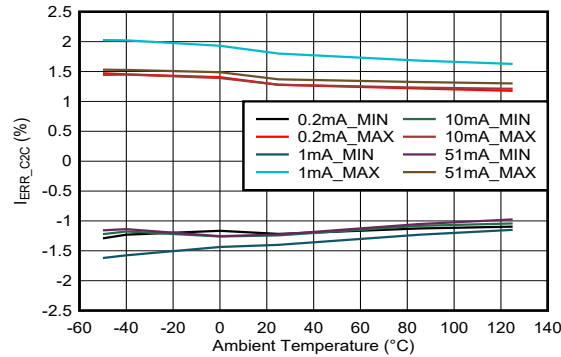


图 8-7. Channel-to-Channel Current Accuracy vs Temperature(MC=1)

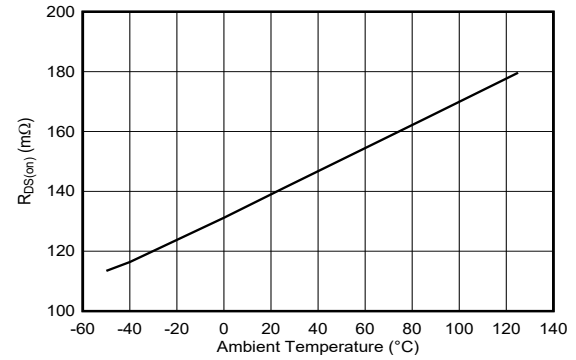


图 8-8. Boost High-side MOSFET $R_{DS(on)}$

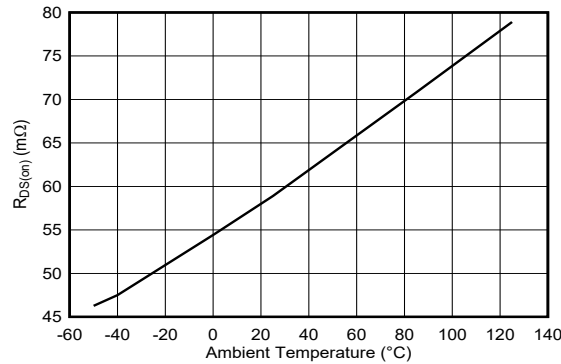


图 8-9. Boost Low-side MOSFET $R_{DS(on)}$

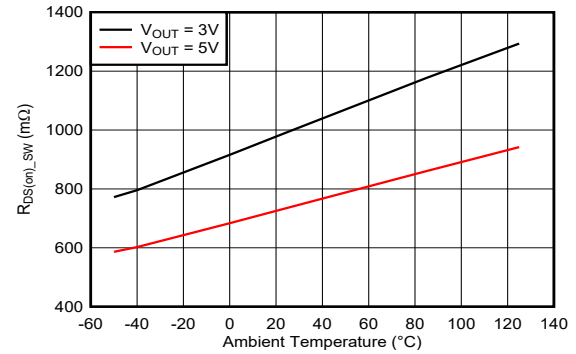


图 8-10. Scan Line Switch MOSFET $R_{DS(on)}$

9 Detailed Description

9.1 Overview

The LP5813 is a synchronous boost 4 × 3 matrix RGB LED driver with autonomous animation engine control. The device can support 1.8 V minimum start-up voltage and 0.5 V to 5.5 V input voltage range during operation. The integrated synchronous boost converter can output 3 V to 5.5 V, to provide enough forward voltage of LEDs. Time-cross-multiplexing (TCM) scheme can support up to 4×3 matrix for 12 LEDs or 4 RGB LEDs, by ¼ multiplexing ratio of the scan switches.

The LP5813 has ultra-low operation current at active mode, consuming about 0.4 mA when LED maximum current setting is 25.5 mA. If all LEDs are turned off, the device will enter standby state to reduce power consumption with data retained. When 'chip_enable' bit setting is 0, initial state is entered with minimum power consumption to save power.

The LP5813 supports both analog dimming and PWM dimming. In analog dimming, the output current of each LED can be adjusted with 256 steps. In PWM dimming, the integrated 8-bit configurable PWM generator enables smooth brightness dimming control. Optional exponential PWM dimming can be activated for individual LED to achieve a human-eye-friendly visual performance.

The LP5813 integrates autonomous animation engine, with no need for brightness control commands from controller. Each LED has an individual animation engine which can be configured through the related registers. The device can generate a 6 MHz clock signal, which synchronizes the lighting effects among multiple devices.

The LP5813 has 4 different material versions with different I²C chip address. Up to 4 LP581x devices can be connected to the same I²C bus and controlled individually. The LP5813 materials and corresponding chip addresses are shown in [Device Comparison](#).

9.2 Functional Block Diagram

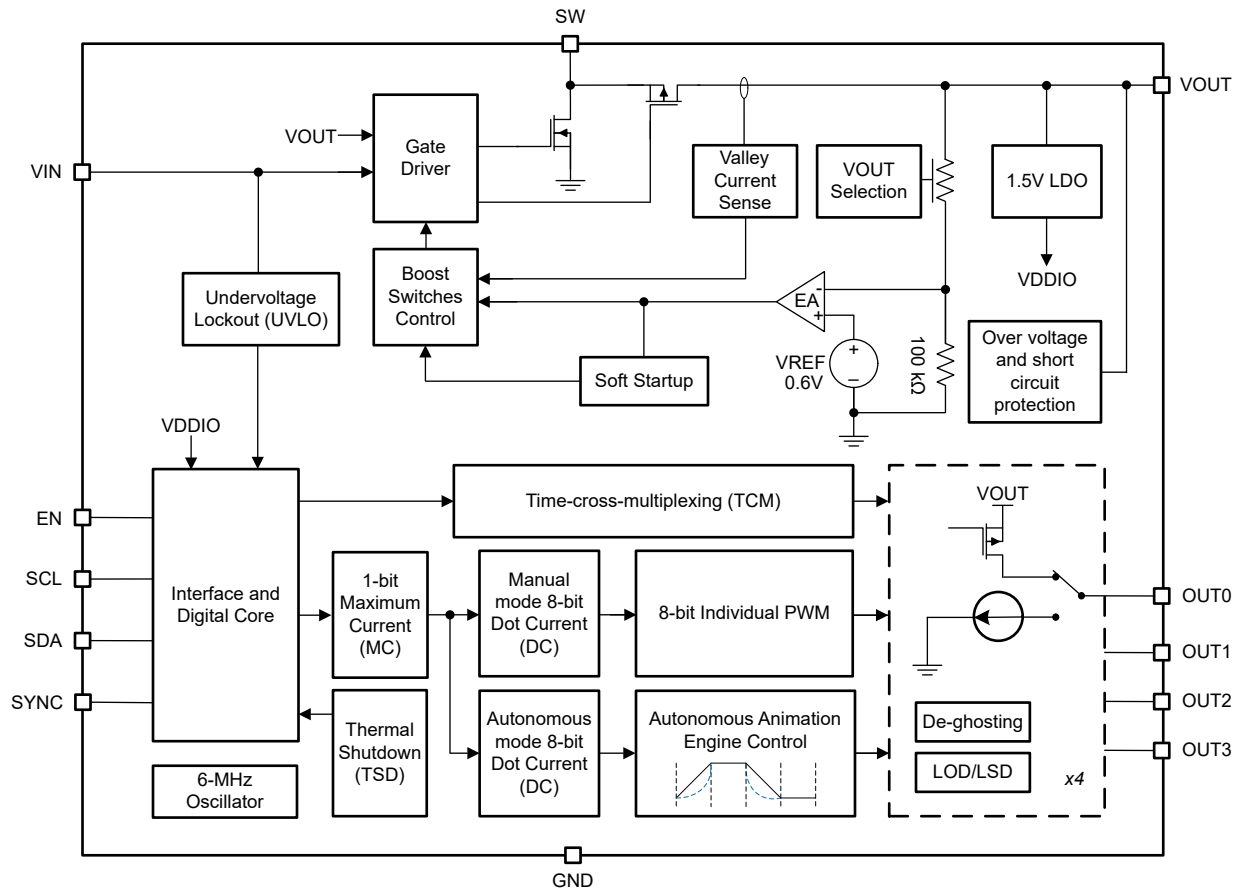


图 9-1. Functional Block Diagram

9.3 Feature Description

9.3.1 Synchronous Boost Converter

The integrated synchronous boost converter is designed to operate with 0.5 V to 5.5 V input voltage supply with 1.6 A (typ.) valley switch current limit. The LP5813 operates at quasi-constant frequency pulse width modulation (PWM) mode, when driving moderate and heavy load. The switching frequency is 1 MHz when the input voltage is above 1.5 V. The frequency is reduced to 0.5 MHz gradually when the input voltage decreases from 1.5 V to 1 V, and keeps at 0.5 MHz when the input voltage is below 1 V. At light load conditions, the boost converter operates at pulse frequency modulation (PFM) mode. During PWM operation, the converter works at adaptive constant on-time valley current mode to achieve excellent line regulation and load regulation, by which a smaller inductor and ceramic capacitors can be supported. Internal loop compensation simplifies the design complexity, and also minimizes the external components.

When powering up, the default output voltage is 3 V. The output voltage can be configured at 'Dev_config_0' register from 3 V to 5.5 V, with 0.1 V step. The integrated boost works as a general boost converter, which can power not only the LEDs driven by the device itself, but also other loads in the system.

9.3.1.1 Undervoltage Lockout

The LP5813 has a built-in undervoltage lockout (UVLO) circuit to make sure the device working properly. When the input voltage is above the UVLO rising threshold 1.8 V, the boost of LP5813 can be enabled. After the LP5813 completes soft-start process and the output voltage rises above 2.2 V, the LP5813 can work with the

input voltage down to 0.5 V. When the input voltage is below UVLO falling threshold 0.4 V, the device shuts down.

9.3.1.2 Enable and Soft Start

When the input voltage is above the UVLO rising threshold 1.8 V and the EN pin is pulled to a voltage above 1.2 V, the boost of LP5813 is enabled and starts up. At the beginning, the LP5813 charges the boost output capacitor with a constant current when the output voltage is below 0.4 V. When the output voltage is charged above 0.4 V, the LP5813 has capability to drive 200 mA load. After the output voltage reaches the input voltage, the boost of LP5813 starts switching, and the output voltage continually ramps up to default voltage 3 V. The typical start-up time is 450 μ s from EN pulled high to output reaching default voltage 3 V, at the application that input voltage is 2.5 V, output effective capacitance is 10 μ F, and no load. When the EN is below 0.42 V, the internal enable comparator turns the device into shutdown mode. In the shutdown mode, the device is entirely turned off and the output is disconnected from input power supply.

9.3.1.3 Switching Frequency

The LP5813 switches at quasi-constant 1-MHz frequency when the input voltage is above 1.5 V. When the input voltage is lower than 1.5 V, the switching frequency is reduced gradually to 0.5 MHz, which improves the boost efficiency and gets higher boost ratio. When the input voltage is below 1 V, the switching frequency is fixed at quasi-constant 0.5 MHz.

9.3.1.4 Current Limit Operation

The LP5813 uses a valley current limit sensing scheme. The inductor current is detected during the switching off-time, by sensing the voltage across the synchronous rectifier.

When the load current increases, such that the inductor current is above the current limit within the whole switching cycle, the off-time increases to discharge the inductor current. The current decreases below the limit before the next on-time. When the current limit is reached, the output voltage decreases if the load current continually increases.

The maximum continuous output current ($I_{OUT(CL)}$), before entering current limit (CL) operation, can be defined by 方程式 1.

$$I_{OUT(CL)} = (1 - D) \times \left(I_{LIM} + \frac{1}{2} \Delta I_{L(P-P)} \right) \quad (1)$$

where

- D is the duty cycle
- $\Delta I_{L(P-P)}$ is the inductor ripple current

The duty cycle can be estimated by 方程式 2.

$$D = 1 - \frac{V_{IN} \times \eta}{V_{OUT}} \quad (2)$$

where

- V_{OUT} is the output voltage of the boost converter
- V_{IN} is the input voltage of the boost converter
- η is the efficiency of the converter, use 90% for most applications

The peak-to-peak inductor ripple current is calculated by 方程式 3.

$$\Delta I_{L(P-P)} = \frac{V_{IN} \times D}{L \times f_{SW}} \quad (3)$$

where

- L is the inductance value of the inductor
- f_{SW} is the switching frequency
- D is the duty cycle
- V_{IN} is the input voltage of the boost converter

9.3.1.5 Boost PWM Mode

The LP5813 uses a quasi-constant 1.0-MHz frequency pulse width modulation (PWM) at moderate to heavy load current. Based on the input voltage to output voltage ratio, a circuit predicts the required on-time. At the beginning of the switching cycle, the main switching low-side FET is turned on. The input voltage is applied across the inductor and the inductor current ramps up. In this phase, the output capacitor is discharged by the load current. When the on-time expires, the low-side FET is turned off, and the high-side rectifier FET is turned on. The inductor transfers its stored energy to replenish the output capacitor and supplies the load. The inductor current declines because the output voltage is higher than the input voltage. When the inductor current hits the valley current threshold determined by the output of the error amplifier, the next switching cycle starts again.

The LP5813 has a built-in compensation circuit that can accommodate a wide range of input voltage, output voltage, inductor value, and output capacitor value for stable operation.

9.3.1.6 Boost PFM Mode

The LP5813 works at PFM to improve efficiency at light load. When the load current decreases, the inductor valley current set by the output of the error amplifier no longer regulates the output voltage. When the inductor valley current hits the low limit, the output voltage exceeds the setting voltage as the load current decreases further. When the feedback voltage hits the PFM reference voltage (0.6 V typical), the LP5813 works at PFM. When the feedback voltage rises and hits the PFM reference voltage, the device continues switching for several cycles because of the delay time of the internal comparator — then it stops switching. The load is supplied by the output capacitor, and the output voltage declines. When the feedback voltage falls below the PFM reference voltage, after the delay time of the comparator, the device starts switching again to ramp up the output voltage.

图 9-2 shows the waveform of voltage when the device works at PWM and PFM.

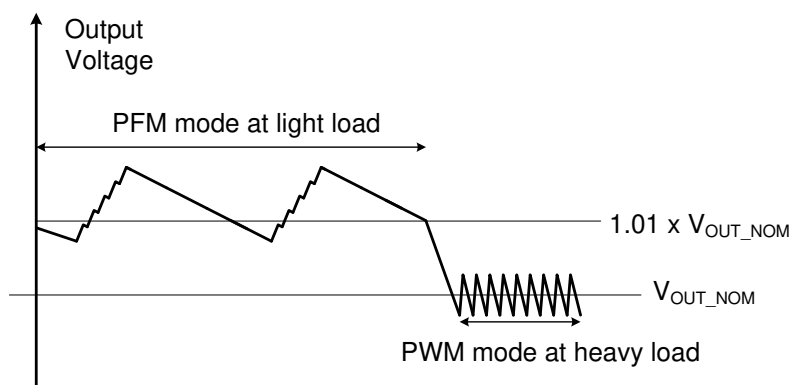


图 9-2. Output Voltage in PWM Mode and PFM

9.3.1.7 Pass-Through Mode

When the input voltage is higher than the setting output voltage, the output voltage is higher than the target regulation voltage. When the output voltage is 101% of the setting target voltage, the LP5813 stops switching and fully turns on the high-side FET and works in pass-through mode. The output voltage is the input voltage minus the voltage drop across the DCR of the inductor and the $R_{DS(on)}$ of the high-side FET. When the output voltage drops below the 97% of the setting target voltage as the input voltage declines or the load current increases, the LP5813 resumes switching again to regulate the output voltage.

9.3.2 Time-cross-multiplexing (TCM) scheme

The LP5813 integrates 4 high-side PMOS scan switches and 4 constant current sinks. Each OUT_x (x = 0, 1, 2, 3) has 1 PMOS scan switch and 1 constant current sink. The source of PMOS switches are connected to the boost output V_{OUT}. During normal operation at default setting, the switches turn on sequentially from OUT₀ to OUT₃. At the same time, only one OUT is selected working as switch, the other 3 OUTs act as constant current sink. Thus a 4×3 matrix is formed with 1/4 multiplexing ratio. The scanning order of OUTs can be configured in 'Dev_config_2' register

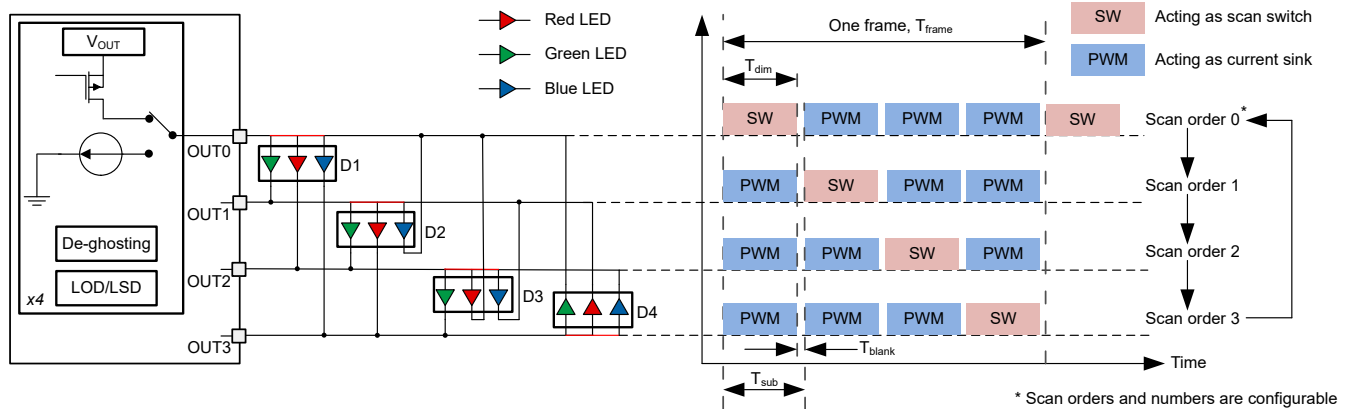


图 9-3. Time-cross-multiplexing (TCM) Scheme

图 9-3 shows the simplified TCM scheme timing diagram of the four outputs. A complete display frame includes 4 sub-periods. Each sub-period contains dimming period and blank time period. In switching period, 1 output is selected as switch and the other 3 OUTs are selected as current sinks. Blank time is applied between two adjacent switching periods for ghosting elimination.

One sub-period cycle time T_{sub} is calculated as 方程式 4:

$$T_{sub} = T_{dim} + T_{blank} \quad (4)$$

- T_{dim} is the scan switch on-time for one switching cycle, which equals to one PWM cycle 42 μs (PWM frequency set as 24 kHz) or 84 μs (PWM frequency set as 12 kHz).
- T_{blank} is blank time is applied between two adjacent dimming periods, which is from 1 μs to 2 μs selected by 'Blank_Time' bits in Dev_Config11 Register.

One complete frame time T_{frame} is calculated as 方程式 5:

$$T_{frame} = T_{sub} \times Scan \# \quad (5)$$

- Scan # is the total scan switches count.

The LP5813 can be configured to direct-drive mode, TCM-drive mode and mix-drive mode by the 'led_mode' bits in 'Dev_Config_1' register. The mix-drive mode contains both direct drive mode and TCM-drive mode for different outputs. With this method, the LP5813 can provide the maximum flexibility for LED configurations of LED average current, LED count, and PCB layouts.

9.3.2.1 Direct drive mode

The direct drive mode can drive up to 4 LEDs (or 1 RGBW / RGBA / RGBY LED) by the internal constant current sinks directly, when the 'led_mode' bit is 0h. The typical application circuit is illustrated in 图 9-4. Each current sink can support up to 51 mA maximum current. In the register map, LED_x (x = 0, 1, 2, 3) are used as the name of each outputs for the related settings.

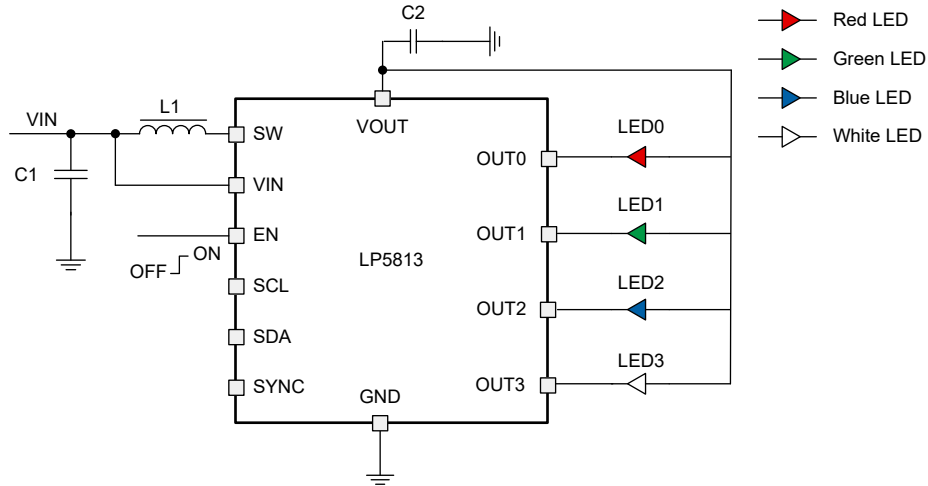


图 9-4. Direct Drive Mode (led_mode = 0h)

9.3.2.2 TCM drive mode

The TCM drive mode is used to drive up to 12 LEDs (or 4 RGB LEDs) with TCM scheme, which is configured by setting led_mode = 1h/2h/3h/4h for 1/2/3/4 scans. After setting the scan count, 'scan_order_x' (x = 1, 2, 3, 4) bits need to be written for the scan orders of each output. The default order is from OUT0 to OUT3 in 4 scans mode.

The TCM drive mode can drive 1 to 12 LEDs with 1 to 4 scans or ¼ to 1 multiplexing ratio. The names LED_xy (x = A, B, C, D; y = 0, 1, 2) are used in the register map for the corresponding LED, which is connected to OUTx (x = 0, 1, 2, 3). The detail naming rule is showed in 表 9-1.

表 9-1. LED Names in Register Maps for TCM Drive Mode

LED name in registers		LED Cathode			
		OUT0	OUT1	OUT2	OUT3
LED Anode	OUT0 (A)	-	LED_A0	LED_A1	LED_A2
	OUT1 (B)	LED_B2	-	LED_B0	LED_B1
	OUT2 (C)	LED_C1	LED_C2	-	LED_C0
	OUT3 (D)	LED_D0	LED_D1	LED_D2	-

The typical application circuits are demonstrated as 图 9-5 (1 scan), 图 9-6 (2 scans), 图 9-7 (3 scans) and 图 9-8 (4 scans).

备注

To avoid unexpected emitting, in RGB LEDs applications, Red LEDs are recommended to be placed in LED_x1 (x = A, B, C, D) positions.

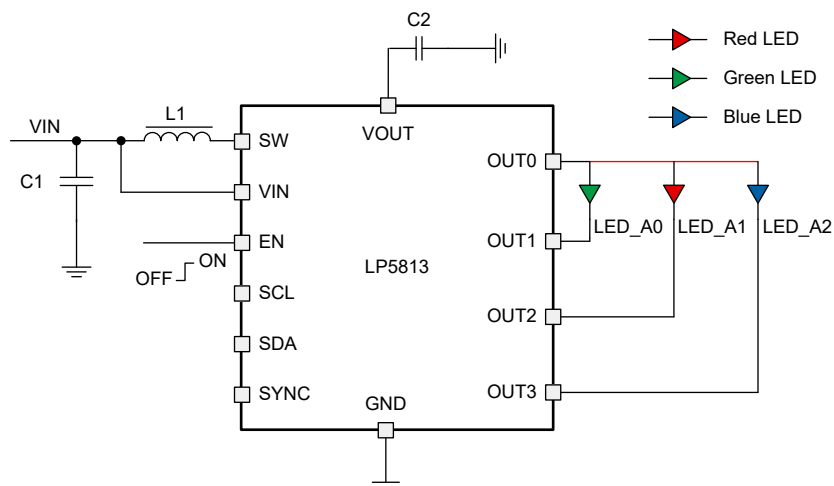


图 9-5. TCM Drive Mode, 1 Scan, (led_mode = 1h, scan_order_0 = 0h)

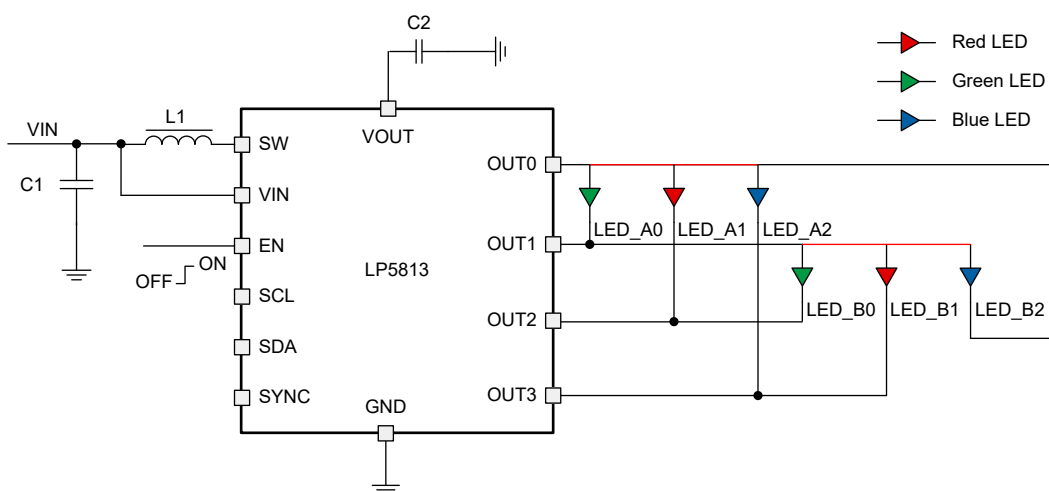


图 9-6. TCM Drive Mode, 2 Scans (led_mode = 2h, scan_order_0 = 0h, scan_order_1 = 1h)

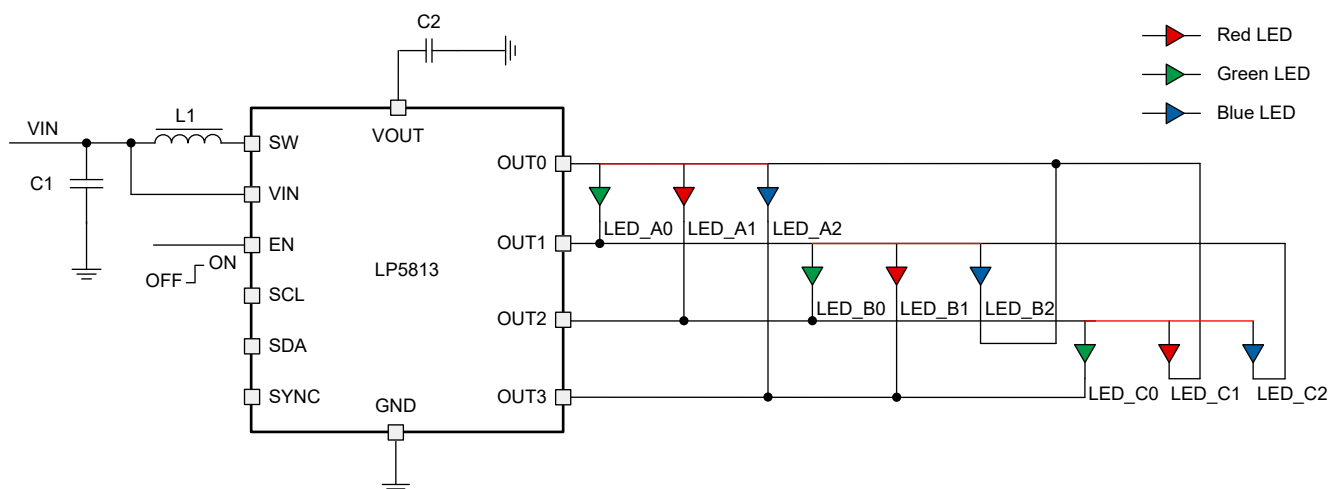


图 9-7. TCM Drive Mode, 3 Scans (led_mode = 3h, scan_order_0 = 0h, scan_order_1 = 1h, scan_order_2 = 2h)

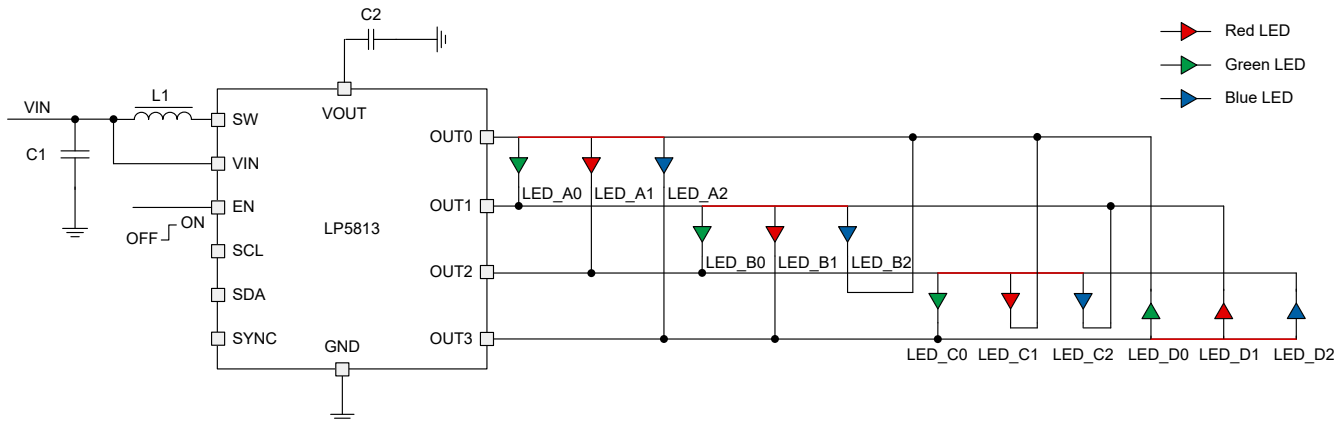


图 9-8. TCM Drive Mode, 4 Scans (led_mode = 4h scan_order_0 = 0h, scan_order_1 = 1h, scan_order_2 = 2h, scan_order_3 = 3h)

9.3.2.3 Mix drive mode

The mix drive mode can drive LEDs separately by direct-drive and TCM-drive in the same time. The mix drive mode is configured by setting led_mode = 5h/6h/7h for 1/2/3 scans. After setting the scan count, scan_order_x (x = 1, 2, 3, 4) needs to be written for the scan orders. Then the direct drive LEDs need to be configured by mix_sel_led in Dev_Config_1 register. To control the LEDs, LED_x (x = 0, 1, 2, 3) in the register map is for the direct drive LEDs, while LED_xy (x = A, B, C, D; y = 0, 1, 2) is for the TCM drive LEDs.

The typical application diagrams are illustrated as 图 9-9 (1 scan), 图 9-10 (2 scans) and 图 9-11 (3 scans).

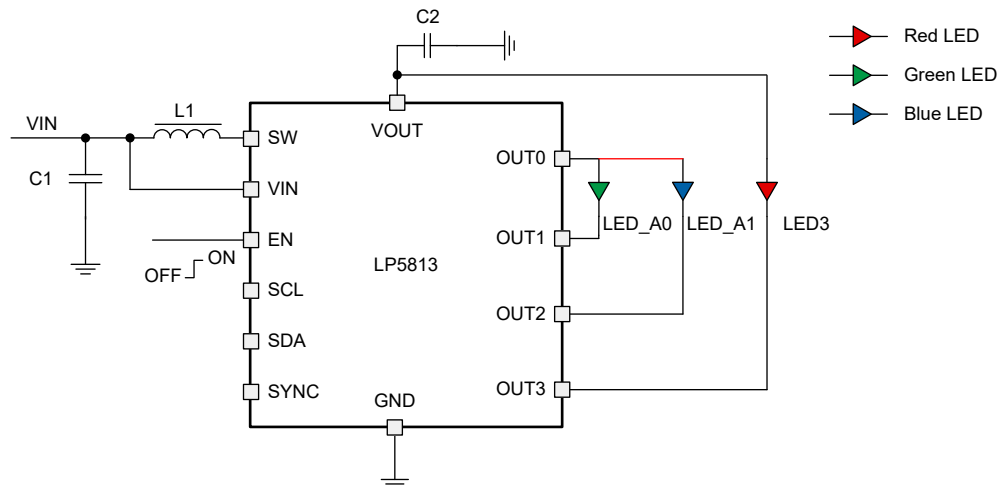


图 9-9. Mix drive, 1 scan (led_mode = 5h, scan_order_0 = 0h, mix_sel_led = 8h)

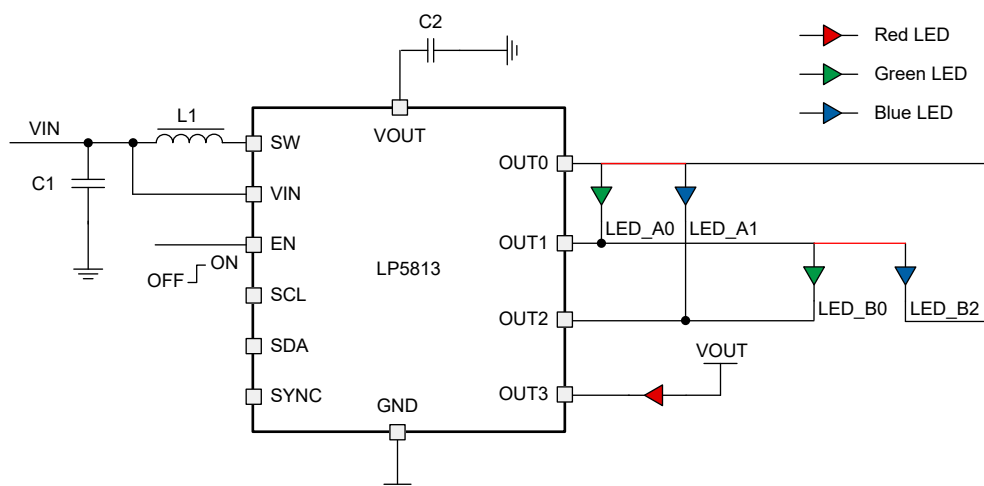


图 9-10. Mix drive mode, 2 scans (led_mode = 6h, scan_order_0 = 0h, scan_order_1 = 1h, mix_sel_led = 8h)

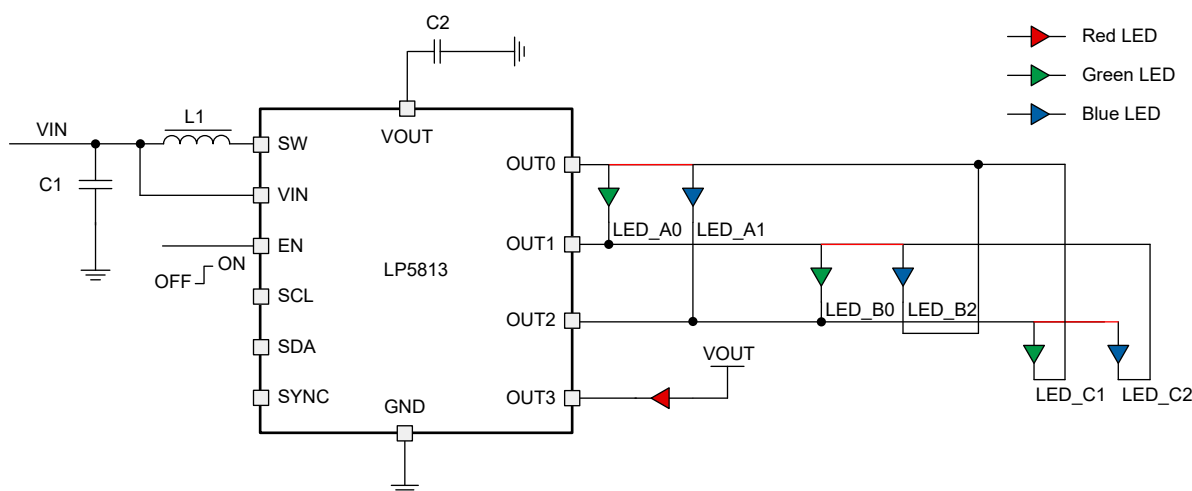


图 9-11. Mix drive mode, 3 scans (led_mode = 7h, scan_order_0 = 0h, scan_order_1 = 1h, scan_order_2 = 2h, mix_sel_led = 8h)

9.3.2.4 Ghosting elimination

The LP5813 integrates ghosting elimination circuits to avoid both upside and downside ghosting phenomenon. The ghosting elimination can be disabled by setting clamp_dis = 1h, which is default as 0 and enabling the function.

Voltage on the outputs is clamped during PWM off time in the rest of switching period, or during blank time period, which is set in 'clamp_sel' bit in Dev_Config12 register. 图 9-12 和 图 9-13 show the effect of different clamp selection.

A middle voltage V_{mid} between V_{OUT} and $V_{OUT} - V_f$ is used to clamp the OUTx (x = 0, 1, 2, 3), where V_f is the forward voltage of LED. This scheme can achieve both pre-discharge for scan switch FET and pre-charge for current sinks, which eliminate up-side and down-side ghosting issues in time-multiplexing topology. Since the clamp voltage for scan switch FET and current sinks is the same value, the reverse voltage on LED during deghosting is avoided. There are 4 options for V_{mid} which is selected in 'vmid_sel' bits in Dev_Config12 register, which can be used for different forward voltage range of different type LEDs.

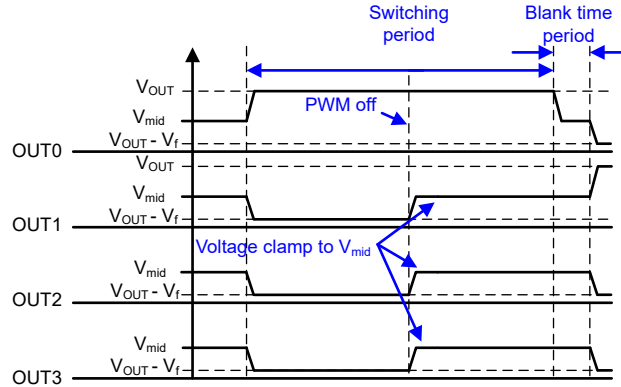


图 9-12. Ghosting elimination waveform when clamp_sel = 1

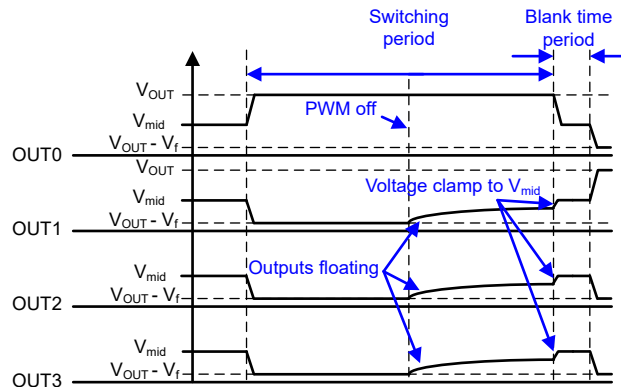


图 9-13. Ghosting elimination waveform when clamp_sel = 0

9.3.3 Analog Dimming

The current gain of each LED can be controlled by 2 methods to achieve analog dimming in the LP5813.

- Global 1-bit Maximum Current (MC) control for all LEDs without external resistor
- Individual 8-bit Dot Current (DC) control for each LED

The maximum output current I_{OUT_max} of each current sink can be programmed by the 1-bit max_current. The default value of max_current is 0h, which means the LED maximum current is set to 25.5 mA in default.

表 9-2. Maximum Current (MC) bit setting

1 bit Maximum Current (MC)		I_{OUT_MAX} (mA)
Binary	Decimal	
0 (default)	0 (default)	25.5 (default)
1	1	51

The LP5813 can individually adjust the peak current of each LED by using Dot Current (DC) function. The brightness deviation among the LED bins can be minimized, to achieve uniform display performance. The current is adjusted with 256 steps from 0 to 100% of I_{OUT_MAX} , which is programmed in an 8-bit register whose default value is 80h.

表 9-3. Dot Current (DC) bits setting

8-bits Dot Current (DC) Register		Ratio of I_{OUT_MAX}
Binary	Decimal	
0000 0000	0	0%
0000 0001	1	0.39%

表 9-3. Dot Current (DC) bits setting (续)

8-bits Dot Current (DC) Register		Ratio of I _{OUT_MAX}
Binary	Decimal	
0000 0010	2	0.78%
---	---	---
1000 0000 (default)	128 (default)	50.2% (default)
---	---	---
1111 1101	253	99.2%
1111 1110	254	99.6%
1111 1111	255	100%

By configuring the MC and DC, the peak current of each current sink can be calculated as [方程式 6](#):

$$I_{OUT}(mA) = I_{OUT_max} \times \frac{DC}{255} \quad (6)$$

The average current of each LED in TCM drive mode and mix drive mode is shown as [方程式 7](#):

$$I_{AVE}(mA) = \frac{I_{OUT}}{N} \times \frac{DC}{255} \times D_{PWM} \quad (7)$$

- N is the total scan number setting.
- D_{PWM} is the PWM duty.

9.3.4 PWM Dimming

The LP5813 supports 8-bit PWM dimming with 24 kHz or 12 kHz frequency, which is configured by 'PWM_Fre' bit in Dev_config_1 register. An internal 6 MHz oscillator is used to generate the PWM clock. SYNC pin can be configured as PWM clock input or output by configure 'vsync_out_en' bit in Dev_Config_11 register. If multiple LP5813 are used in the system with autonomous animation engine control, all devices can refer the same clock signal, which comes from one of LP5813 or external controller, to avoid animation mismatch in long time operation.

Each LED can be configured into 3 different PWM alignment phases: Forward, Middle, and Backward. The alignment phase of each LED is set by 'phase_align' bits in Dev_Config_7 to Dev_Config_10 registers. By turning on the LEDs in different phase, the peak current load from boost or the system power supply is greatly decreased. The input current ripple and ceramic-capacitor audible ringing can also be reduced. [图 9-14](#) shows the PWM alignment phases. In the forward alignment, the rising edge of PWM pulse is fixed at the beginning of PWM period. In the middle alignment, the middle point of PWM pulse is fixed at the middle of PWM period, while the pulse spreads to both directions. In the backward alignment, the falling edge of PWM pulse is fixed at the end of PWM period.

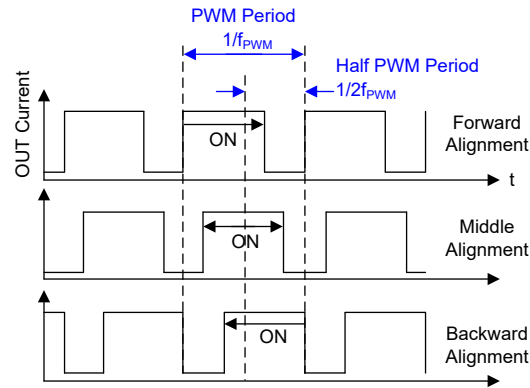


图 9-14. PWM Alignment Scheme

The LP5813 allow users to configure the dimming scale as exponential curve or linear curve, through the 'exp_en' bits in Dev_Config_5 and Dev_Config_6 registers. A human-eye-friendly visual performance can be achieved by using the internal exponential scale. The linear scale has great linearity between PWM duty cycle and PWM setting value, which provides flexible approach for external controlled gamma correction algorithm. The 8-bit linear and exponential curves are shown as 图 9-15.

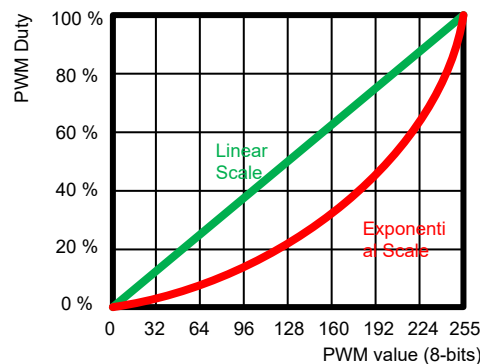


图 9-15. Linear and Exponential PWM Dimming Curves

9.3.5 Autonomous Animation Engine Control

The LP5813 supports both manual mode and autonomous mode to control the DC and PWM of each LED. In manual mode, the LEDs are directly controlled by the related configuration registers and reflect the value immediately. In autonomous mode, the autonomous animation engine is applied for each LED, which can realize vivid lighting effects without external processor control. The animation engine pattern is composed by 3 animation engine units (AEU) and 2 animation pause units (APU) for complex and flexible control. One AEU is formed by 4 slopers, which is used for fading effect.

After setting up all animation engine pattern configurations, sending start_cmd to the device can let the animation running autonomously, to free external controller real-time loading. The PWM value and unit status of each LED can be read from PWM_value registers and pattern_status registers. To make sure the precision of reading results, sending pause_cmd to pause the animation firstly is recommended.

9.3.5.1 Animation Engine Pattern

Each LED of the LP5813 has own animation engine, to achieve premium visual lighting effects. One whole animation engine pattern is defined as 图 9-16. 3 animation engine units (AEU) and 2 animation pause units (APU) compose the animation engine pattern. AEU2 and AEU3 can be skipped by setting the playback times to 0. The LED current of each LEDs in the autonomous mode is set through the Autonomous_DC registers.

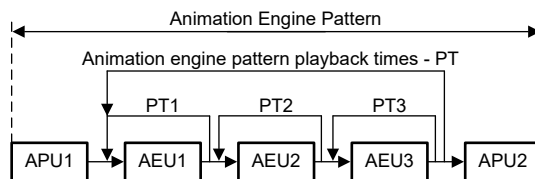


图 9-16. Animation engine pattern

The whole animation pattern includes two APUs and three AEUs with several playback times:

- APU_x (x = 1, 2): Animation pause unit, each unit includes one timing value T.
- AEU_x (x = 1, 2, 3): Animation engine unit, including 5 PWM values PWM1 to PWM5 and 4 time values T1 to T4.
- PT: Playback times of AEU1+AEU2+AEU3, which has 2-bit value to set 0/1/2/Infinite times.
- PT_x: Playback times of AEU_x (x=1/2/3), which has 2-bit value to set 0/1/2/Infinite times.

9.3.5.2 Sloper

Sloper is the basic element to achieve autonomous fade-in and fade-out animations. It can achieve 256 steps fade-in or fade-out effects from 'PWM_Start' to 'PWM_End' within a target time period T as 图 9-17. The 8-bit PWM steps, which is configurable in animation pattern PWM setting registers, help to achieve extremely smooth effects. Exponential dimming curve can also be supported in the sloper.

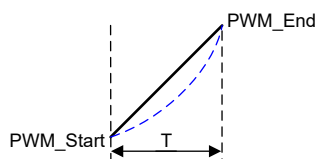


图 9-17. Sloper curve demonstration

The programable time T is selectable from 0 to around 8 s with 16 levels shown in 表 9-4.

表 9-4. Programable time options

Register value	0h	1h	2h	3h	4h	5h	6h	7h	8h	9h	Ah	Bh	Ch	Dh	Eh	Fh
Time (Typ.)	0 s	0.1 s	0.2 s	0.35 s	0.55 s	0.8 s	1 s	1.5 s	2 s	2.5 s	3 s	4 s	5 s	6 s	7 s	8 s

9.3.5.3 Animation Engine Unit (AEU)

The AEU is the most important unit to achieve autonomous animation effects. One AEU is formed by 4 slopers. There are 5 PWM values and 4 time values can be configured in the AEU. Each PWM_x (x = 1, 2, ..., 5) can be arbitrarily programmed from 0 to 255, The T_x (x = 1, 2, 3, 4) is selectable from 0 to 8 s with 16 levels referring to 表 9-4. If two adjacent PWM values are equal, the brightness keeps unchange within the time setting. When a T_x is set to 0, this sloper is skipped. To avoid flicker happens due to PWM value suddenly changes, the begin and end PWM of this sloper need to be the same.

Typical breathing effect example is illustrated as 图 9-18.

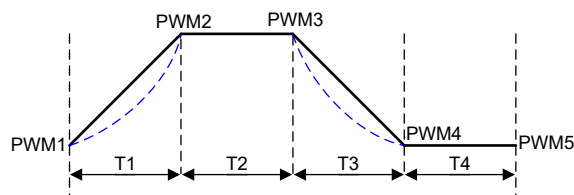


图 9-18. Animation engine unit - Example 1

Advanced breathing effect example is shown in 图 9-19. 2 different fading speeds are set in the PWM rising and falling phases, to achieve a complex animation.

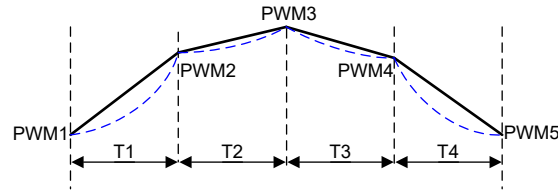


图 9-19. Animation engine unit - Example 2

9.3.5.4 Animation Pause Unit (APU)

The APU is defined as the pausing time at the beginning and the end of the animation pattern. The APU contains 1 time value which is selectable from 0 to 8 s with 16 levels referring to 表 9-4. If the value is set as 0, the APU is skipped. The brightness of APU1 uses the PWM1 value of the AEU following the APU1, while the brightness of APU2 uses the PWM5 value of the AEU in front of APU2. One animation pattern example is shown in 图 9-20. Only AEU2 is enabled in the pattern, so that the brightness of APU1 uses the PWM1 value of AEU2, and the brightness of APU2 uses PWM5 value of AEU2.

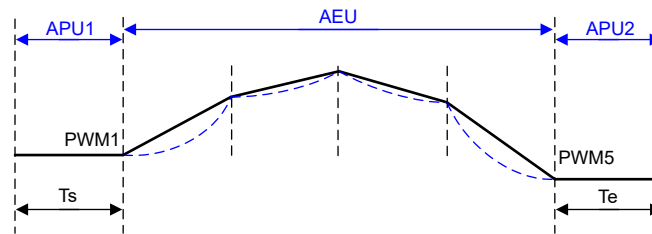


图 9-20. APU example

9.3.6 Protections and Diagnostics

9.3.6.1 Overvoltage Protection

The boost of LP5813 has an output overvoltage protection (OVP) to protect the device. When the output voltage is above 5.7 V, the boost stops switching. Once the output voltage falls 0.1 V below the OVP threshold, the boost resumes operating again.

9.3.6.2 Output Short-to-Ground Protection

The boost of LP5813 starts to limit the boost current when the boost output voltage is below 1.8 V. The lower the boost output voltage reaches, the smaller the output current decreases. When the VOUT pin is short to ground and the boost output voltage is less than 0.4 V, the output current is limited to approximately 350 mA. Once the short circuit is released, the LP5813 goes through the soft start-up again to the regulated output voltage.

9.3.6.3 LED Open Detections

The LP5813 integrates LED open detection (LOD) for the fault caused by any open LED. The threshold for LOD is 90 mV when max current is set as 25.5 mA, and 180 mV when max current is set as 51 mA. To have enough detection time, LOD can only be performed when the PWM setting of this LED is above 25. If the voltage on the cathode of this LED is lower than the LOD threshold in continuously 3 cycles, LED open of this LED is reported to the corresponding LOD_status register.

The LOD flags can be cleared by writing 1h to 'lod_clear' bit in Fault_Clear register. If the LED open status is removed, the related 'lod_status' bit is set to 0 automatically.

The 'lod_action' bit in Dev_config_12 register can determine the action once open fault is detected. When the 'lod_action' bit is set to 1h, the dot where LED open happens is turned off to avoid any unpredictable issue. When the 'lod_action' bit is 0, no additional action is taken after LOD is detected. LED open fault detection and action is only executed in NORMAL state.

9.3.6.4 LED Short Detections

The LP5813 integrates LED short detection (LSD) for the fault caused by any short LED. The threshold of LSD is able to configure from $(0.35 \times V_{OUT})$ V to $(0.65 \times V_{OUT})$ V by configuring lsd_threshold in Dev_config_12 register. To have enough detection time, LSD can only be performed when the PWM setting of this LED is above 25. If the voltage on the cathode of this LED is higher than the LSD threshold in continuously 3 cycles, LED short of this LED is reported to the corresponding LSD_status register.

The LSD flags can be cleared by writing 1h to lsd_clear in Fault_CLR register. If the LED short status is removed, the related lsd_status bit is set to 0 automatically.

The 'lsd_action' bit in Dev_config_12 register can determine the reaction once open fault is detected. When the 'lsd_action' bit is set to 1h, all LEDs are turned off which is called one fails all fail (OFAF) action, to prevent potential damage caused by the short issue. The device enters to STANDBY state after sending 'lsd_clear' command. When the 'lsd_action' bit is 0, no additional action is taken after LSD is detected. LSD detection is only executed in NORMAL state.

9.3.6.5 Thermal Shutdown

The LED driver of LP5813 goes into thermal shutdown state once the junction temperature exceeds 150°C. All LEDs turn off to avoid damaging the device. When the junction temperature drops below the thermal shutdown recovery temperature 130°C, the LED driver starts operating again.

The boost converter of LP5813 stops switching and is shutdown once the junction temperature exceeds 155°C, and the power on reset of the LED driver part is also triggered. When the junction temperature drops below the thermal shutdown recovery temperature, typically 130°C, the LP5813 enters shutdown state, and then the device needs to be configured again for normal operations.

9.4 Device Functional Modes

The [图 9-21](#) shows the main state machine of the LED driver.

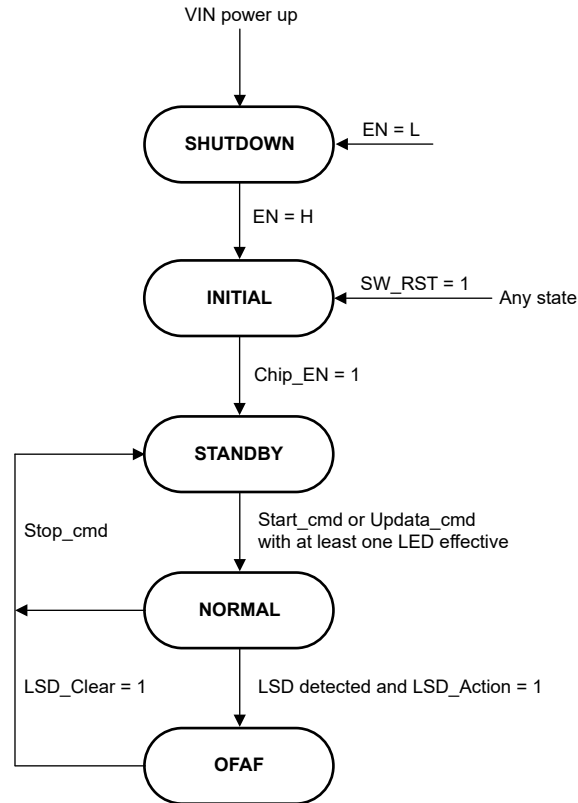


图 9-21. LP5813 functional modes

- **SHUTDOWN:** The device enters into SHUTDOWN after VIN power up.
- **INITIAL:** The device enters into INITIAL state from SHUTDOWN when EN is pulled high.
- **STANDBY:** The device enters into STANDBY state from INITIAL when Chip_EN is set to 1. The device can also enter into STANDBY from NORMAL when no LED is effective, or Stop_cmd is received, or from OFAF when LSD_Clear = 1.
- **NORMAL:** The device enters NORMAL state from STANDBY when one or more LEDs are effective: for manual mode, at least one LED is enable (PWM and DC setting is not 0); for autonomous mode, at lease one LED is enable and Start_cmd is received.
- **OFAF:** The device enters OFAF (one fail all fail) state when LED short is detected and LSD_Action =1. In OFAF mode, all LEDs are turned off. Once LSD_Clear is written to 1, the device enters back to STANDBY state.

9.5 Programming

The LP5813 is compatible with I²C standard specification. The device supports standard mode (100-kHz maximum), fast mode (400-kHz maximum), and fast plus mode (1-MHz maximum). The device has 4 different chip address versions, which allows connecting up to four parallel devices in one I²C bus.

I²C Data Transactions

The data on SDA line must be stable during the HIGH period of the clock signal (SCL). In other words, state of the data line can only be changed when clock signal is LOW. START and STOP conditions classify the beginning and the end of the data transfer session. A START condition is defined as the SDA signal transitioning from HIGH to LOW while SCL line is HIGH. A STOP condition is defined as the SDA transitioning from LOW to HIGH while SCL is HIGH. The bus leader always generates START and STOP conditions. The bus is considered to be busy after a START condition and free after a STOP condition. During data transmission, the bus leader can generate repeated START conditions. First START and repeated START conditions are functionally equivalent.

Each byte of data has to be followed by an acknowledge bit. The acknowledge related clock pulse is generated by the leader. The leader releases the SDA line (HIGH) during the acknowledge clock pulse. The device pulls down the SDA line during the 9th clock pulse, signifying an acknowledge. The device generates an acknowledge after each byte has been received.

There is one exception to the acknowledge after every byte rule. When the leader is the receiver, the receiver must indicate to the transmitter an end of data by not acknowledging (*negative acknowledge*) the last byte clocked out of the follower. This negative acknowledge still includes the acknowledge clock pulse (generated by the leader), but the SDA line is not pulled down.

I²C Data Format

The address and data bits are transmitted MSB first with 8-bits length format in each cycle. Each transmission is started with Address Byte 1, which are divided into 5 bits of the chip address, 2 higher bits of the register address, and 1 read/write bit. The other 8 lower bits of register address are put in Address Byte 2. The device supports both independent mode and broadcast mode. The auto-increment feature allows writing / reading several consecutive registers within one transmission. If not consecutive, a new transmission must be started. The Bit 4 and Bit 3 are determined by the device, which can refer to [Device Comparison](#).

表 9-5. I²C Data Format

Address Byte1	Chip Address					Register Address		R/W
	Bit 7	Bit 6	Bit 5	Bit 4	Bit 3	Bit 2	Bit 1	Bit 0
Independent	1	0	1	Bit 4	Bit 3	9 th bit	8 th bit	R: 1 W: 0
Broadcast	1	1	0	1	1			
Address Byte2	Register Address							
	Bit 7	Bit 6	Bit 5	Bit 4	Bit 3	Bit 2	Bit 1	Bit 0
	7 th bit	6 th bit	5 th bit	4 th bit	3 rd bit	2 nd bit	1 st bit	0 bit

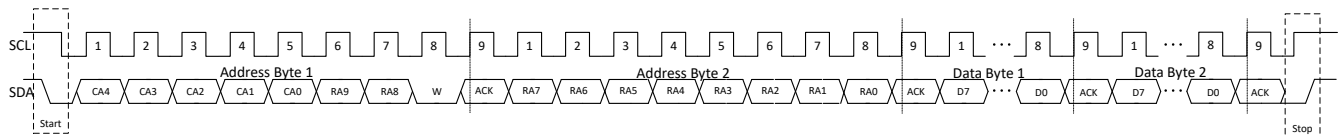


图 9-22. I²C Write Timing

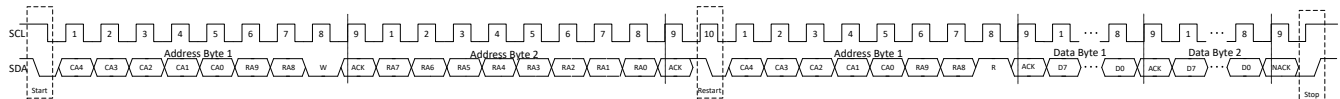


图 9-23. I²C Read Timing

9.6 Register Map Table

This section provides a summary of the register maps.

表 9-6. Register Section/Block Access Type Codes

Access Type	Code	Description
Read Type		
R	R	Read
RC	R C	Read to Clear
R-0	R -0	Read Returns 0
Write Type		
W	W	Write
W1C	W 1C	W 1 to clear
Reset or Default Value		
-n		Value after reset or the default value

Register Acronym	Address	Type	D7	D6	D5	D4	D3	D2	D1	D0	Default
Device_Enable Register											
Chip_en	000h	R/W	Reserved							chip_en	00h
Config Registers											
Dev_Config_0	001h	R/W	Reserved		boost_vout					max_curr ent	00h
Dev_Config_1	002h	R/W	pwm_fre	led_mode			mix_sel_led				00h
Dev_Config_2	003h	R/W	scan_order_3		scan_order_2		scan_order_1		scan_order_0		E4h
Dev_Config_3	004h	R/W	auto_en_ b0	auto_en_ a2	auto_en_ a1	auto_en_ a0	auto_en_ 3	auto_en_ 2	auto_en_ 1	auto_en_ 0	00h
Dev_Config_4	005h	R/W	auto_en_ d2	auto_en_ d1	auto_en_ d0	auto_en_ c2	auto_en_ c1	auto_en_ c0	auto_en_ b2	auto_en_ b1	00h
Dev_Config_5	006h	R/W	exp_en_b 0	exp_en_a 2	exp_en_a 1	exp_en_a 0	exp_en_3	exp_en_2	exp_en_1	exp_en_0	00h
Dev_Config_6	007h	R/W	exp_en_d 2	exp_en_d 1	exp_en_d 0	exp_en_c 2	exp_en_c 1	exp_en_c 0	exp_en_b 2	exp_en_b 1	00h
Dev_Config_7	008h	R/W	phase_align_3		phase_align_2		phase_align_1		phase_align_0		00h
Dev_Config_8	009h	R/W	phase_align_b0		phase_align_a2		phase_align_a1		phase_align_a0		00h
Dev_Config_9	00Ah	R/W	phase_align_c1		phase_align_c0		phase_align_b2		phase_align_b1		00h
Dev_Config_10	00Bh	R/W	phase_align_d2		phase_align_d1		phase_align_d0		phase_align_c2		00h
Dev_Config_11	00Ch	R/W	Reserved					vsync_ou t_en	blank_time		00h
Dev_Config_12	00Dh	R/W	vmid_sel		clamp_se l	clamp_di s	lod_actio n	lsd_actio n	lsd_threshold		08h
Command Registers											
CMD_Update	010h	W1C	update_command								00h
CMD_Start	011h	W1C	start_command								00h
CMD_Stop	012h	W1C	stop_command								00h
CMD_Pause	013h	W1C	pause_command								00h
CMD_Continue	014h	W1C	continue_command								00h
led_enable Registers											

Register Acronym	Address	Type	D7	D6	D5	D4	D3	D2	D1	D0	Default
led_en_1	020h	R/W	led_en_b0	led_en_a2	led_en_a1	led_en_a0	led_en_3	led_en_2	led_en_1	led_en_0	00h
led_en_2	021h	R/W	led_en_d2	led_en_d1	led_en_d0	led_en_c2	led_en_c1	led_en_c0	led_en_b2	led_en_b1	00h
Fault_Clear Register											
Fault_Clear	022h	W1C	Reserved					tsd_clear	lsd_clear	lod_clear	00h
Reset Register											
Reset	023h	W1C	sw_reset								00h
Manual_DC Registers											
Manual_DC_0	030h	R/W	manual_dc_0								00h
Manual_DC_1	031h	R/W	manual_dc_1								00h
Manual_DC_2	032h	R/W	manual_dc_2								00h
Manual_DC_3	033h	R/W	manual_dc_3								00h
Manual_DC_4	034h	R/W	manual_dc_a0								00h
Manual_DC_5	035h	R/W	manual_dc_a1								00h
Manual_DC_6	036h	R/W	manual_dc_a2								00h
Manual_DC_7	037h	R/W	manual_dc_b0								00h
Manual_DC_8	038h	R/W	manual_dc_b1								00h
Manual_DC_9	039h	R/W	manual_dc_b2								00h
Manual_DC_10	03Ah	R/W	manual_dc_c0								00h
Manual_DC_11	03Bh	R/W	manual_dc_c1								00h
Manual_DC_12	03Ch	R/W	manual_dc_c2								00h
Manual_DC_13	03Dh	R/W	manual_dc_d0								00h
Manual_DC_14	03Eh	R/W	manual_dc_d1								00h
Manual_DC_15	03Fh	R/W	manual_dc_d2								00h
Manual_PWM Registers											
Manual_PWM_0	040h	R/W	manual_pwm_0								00h
Manual_PWM_1	041h	R/W	manual_pwm_1								00h
Manual_PWM_2	042h	R/W	manual_pwm_2								00h
Manual_PWM_3	043h	R/W	manual_pwm_3								00h
Manual_PWM_4	044h	R/W	manual_pwm_a0								00h
Manual_PWM_5	045h	R/W	manual_pwm_a1								00h
Manual_PWM_6	046h	R/W	manual_pwm_a2								00h
Manual_PWM_7	047h	R/W	manual_pwm_b0								00h
Manual_PWM_8	048h	R/W	manual_pwm_b1								00h
Manual_PWM_9	049h	R/W	manual_pwm_b2								00h
Manual_PWM_10	04Ah	R/W	manual_pwm_c0								00h
Manual_PWM_11	04Bh	R/W	manual_pwm_c1								00h
Manual_PWM_12	04Ch	R/W	manual_pwm_c2								00h
Manual_PWM_13	04Dh	R/W	manual_pwm_d0								00h
Manual_PWM_14	04Eh	R/W	manual_pwm_d1								00h
Manual_PWM_15	04Fh	R/W	manual_pwm_d2								00h
Autonomous_DC Registers											
Auto_DC_0	050h	R/W	auto_dc_0								00h
Auto_DC_1	051h	R/W	auto_dc_1								00h
Auto_DC_2	052h	R/W	auto_dc_2								00h

Register Acronym	Address	Type	D7	D6	D5	D4	D3	D2	D1	D0	Default
Auto_DC_3	053h	R/W	auto_dc_3								00h
Auto_DC_4	054h	R/W	auto_dc_a0								00h
Auto_DC_5	055h	R/W	auto_dc_a1								00h
Auto_DC_6	056h	R/W	auto_dc_a2								00h
Auto_DC_7	057h	R/W	auto_dc_b0								00h
Auto_DC_8	058h	R/W	auto_dc_b1								00h
Auto_DC_9	059h	R/W	auto_dc_b2								00h
Auto_DC_10	05Ah	R/W	auto_dc_c0								00h
Auto_DC_11	05Bh	R/W	auto_dc_c1								00h
Auto_DC_12	05Ch	R/W	auto_dc_c2								00h
Auto_DC_13	05Dh	R/W	auto_dc_d0								00h
Auto_DC_14	05Eh	R/W	auto_dc_d1								00h
Auto_DC_15	05Fh	R/W	auto_dc_d2								00h
LED_0_Autonomous_Animation Registers											
LED_0_Auto_Pause	080h	R/W	led_0_pause_start				led_0_pause_stop				00h
LED_0_Auto_Playback	081h	R/W	Reserved		led_0_aeu_num		LED_0_pt				00h
LED_0_AEU1_PWM_1	082h	R/W	led_0_aeu1_pwm1								00h
LED_0_AEU1_PWM_2	083h	R/W	led_0_aeu1_pwm2								00h
LED_0_AEU1_PWM_3	084h	R/W	led_0_aeu1_pwm3								00h
LED_0_AEU1_PWM_4	085h	R/W	led_0_aeu1_pwm4								00h
LED_0_AEU1_PWM_5	086h	R/W	led_0_aeu1_pwm5								00h
LED_0_AEU1_T12	087h	R/W	led_0_aeu1_t2				led_0_aeu1_t1				00h
LED_0_AEU1_T34	088h	R/W	led_0_aeu1_t4				led_0_aeu1_t3				00h
LED_0_AEU1_Playback	089h	R/W	Reserved							led_0_aeu1_pt	00h
LED_0_AEU2_PWM_1	08Ah	R/W	led_0_aeu2_pwm1								00h
LED_0_AEU2_PWM_2	08Bh	R/W	led_0_aeu2_pwm2								00h
LED_0_AEU2_PWM_3	08Ch	R/W	led_0_aeu2_pwm3								00h
LED_0_AEU2_PWM_4	08Dh	R/W	led_0_aeu2_pwm4								00h
LED_0_AEU2_PWM_5	08Eh	R/W	led_0_aeu2_pwm5								00h
LED_0_AEU2_T12	08Fh	R/W	led_0_aeu2_t2				led_0_aeu2_t1				00h
LED_0_AEU2_T34	090h	R/W	led_0_aeu2_t4				led_0_aeu2_t3				00h
LED_0_AEU2_Playback	091h	R/W	Reserved							led_0_aeu2_pt	00h
LED_0_AEU3_PWM_1	092h	R/W	led_0_aeu3_pwm1								00h
LED_0_AEU3_PWM_2	093h	R/W	led_0_aeu3_pwm2								00h

Register Acronym	Address	Type	D7	D6	D5	D4	D3	D2	D1	D0	Default
LED_0_AEU3_PWM_3	094h	R/W	led_0_aeu3_pwm3								00h
LED_0_AEU3_PWM_4	095h	R/W	led_0_aeu3_pwm4								00h
LED_0_AEU3_PWM_5	096h	R/W	led_0_aeu3_pwm5								00h
LED_0_AEU3_T12	097h	R/W	led_0_aeu3_t2				led_0_aeu3_t1				00h
LED_0_AEU3_T34	098h	R/W	led_0_aeu3_t4				led_0_aeu3_t3				00h
LED_0_AEU3_Playback	099h	R/W	Reserved						led_0_aeu3_pt		00h
LED_1 Autonomous Animation Registers											
LED_1_Auto_Pause	09Ah	R/W	led_1_pause_start				led_1_pause_stop				00h
LED_1_Auto_Playback	09Bh	R/W	Reserved		led_1_aeu_num		led_1_pt				00h
LED_1_AEU1_PWM_1	09Ch	R/W	led_1_aeu1_pwm1								00h
LED_1_AEU1_PWM_2	09Dh	R/W	led_1_aeu1_pwm2								00h
LED_1_AEU1_PWM_3	09Eh	R/W	led_1_aeu1_pwm3								00h
LED_1_AEU1_PWM_4	09Fh	R/W	led_1_aeu1_pwm4								00h
LED_1_AEU1_PWM_5	0A0h	R/W	led_1_aeu1_pwm5								00h
LED_1_AEU1_T12	0A1h	R/W	led_1_aeu1_t2				led_1_aeu1_t1				00h
LED_1_AEU1_T34	0A2h	R/W	led_1_aeu1_t4				led_1_aeu1_t3				00h
LED_1_AEU1_Playback	0A3h	R/W	Reserved						led_1_aeu1_pt		00h
LED_1_AEU2_PWM_1	0A4h	R/W	led_1_aeu2_pwm1								00h
LED_1_AEU2_PWM_2	0A5h	R/W	led_1_aeu2_pwm2								00h
LED_1_AEU2_PWM_3	0A6h	R/W	led_1_aeu2_pwm3								00h
LED_1_AEU2_PWM_4	0A7h	R/W	led_1_aeu2_pwm4								00h
LED_1_AEU2_PWM_5	0A8h	R/W	led_1_aeu2_pwm5								00h
LED_1_AEU2_T12	0A9h	R/W	led_1_aeu1_t2				led_1_aeu1_t1				00h
LED_1_AEU2_T34	0AAh	R/W	led_1_aeu1_t4				led_1_aeu1_t3				00h
LED_1_AEU2_Playback	0ABh	R/W	Reserved						led_1_aeu2_pt		00h
LED_1_AEU3_PWM_1	0ACh	R/W	led_1_aeu3_pwm1								00h
LED_1_AEU3_PWM_2	0ADh	R/W	led_1_aeu3_pwm2								00h
LED_1_AEU3_PWM_3	0AEh	R/W	led_1_aeu3_pwm3								00h
LED_1_AEU3_PWM_4	0AFh	R/W	led_1_aeu3_pwm4								00h
LED_1_AEU3_PWM_5	0B0h	R/W	led_1_aeu3_pwm5								00h

Register Acronym	Address	Type	D7	D6	D5	D4	D3	D2	D1	D0	Default
LED_1_AEU3_T12	0B1h	R/W	led_1_aeu3_t2				led_1_aeu3_t1				00h
LED_1_AEU3_T34	0B2h	R/W	led_1_aeu3_t4				led_1_aeu3_t3				00h
LED_1_AEU3_Play back	0B3h	R/W	Reserved						led_1_aeu3_pt		00h
LED_2 Autonomous Animation Registers											
LED_2_Auto_Pause	0B4h	R/W	led_2_pause_start				led_2_pause_stop				00h
LED_2_Auto_Playback	0B5h	R/W	Reserved		led_2_aeu_num		led_2_pt				00h
LED_2_AEU1_PWM_1	0B6h	R/W	led_2_aeu1_pwm1								00h
LED_2_AEU1_PWM_2	0B7h	R/W	led_2_aeu1_pwm2								00h
LED_2_AEU1_PWM_3	0B7h	R/W	led_2_aeu1_pwm3								00h
LED_2_AEU1_PWM_4	0B9h	R/W	led_2_aeu1_pwm4								00h
LED_2_AEU1_PWM_5	0BAh	R/W	led_2_aeu1_pwm5								00h
LED_2_AEU1_T12	0BBh	R/W	led_2_aeu1_t2				led_2_aeu1_t1				00h
LED_2_AEU1_T34	0BCh	R/W	led_2_aeu1_t4				led_2_aeu1_t3				00h
LED_2_AEU1_Play back	0BDh	R/W	Reserved						led_2_aeu1_pt		00h
LED_2_AEU2_PWM_1	0BEh	R/W	led_2_aeu2_pwm1								00h
LED_2_AEU2_PWM_2	0BFh	R/W	led_2_aeu2_pwm2								00h
LED_2_AEU2_PWM_3	0C0h	R/W	led_2_aeu2_pwm3								00h
LED_2_AEU2_PWM_4	0C1h	R/W	led_2_aeu2_pwm4								00h
LED_2_AEU2_PWM_5	0C2h	R/W	led_2_aeu2_pwm5								00h
LED_2_AEU2_T12	0C3h	R/W	led_2_aeu2_t2				led_2_aeu2_t1				00h
LED_2_AEU2_T34	0C4h	R/W	led_2_aeu2_t4				led_2_aeu2_t3				00h
LED_2_AEU2_Play back	0C5h	R/W	Reserved						led_2_aeu2_pt		00h
LED_2_AEU3_PWM_1	0C6h	R/W	led_2_aeu3_pwm1								00h
LED_2_AEU3_PWM_2	0C7h	R/W	led_2_aeu3_pwm2								00h
LED_2_AEU3_PWM_3	0C8h	R/W	led_2_aeu3_pwm3								00h
LED_2_AEU3_PWM_4	0C9h	R/W	led_2_aeu3_pwm4								00h
LED_2_AEU3_PWM_5	0CAh	R/W	led_2_aeu3_pwm5								00h
LED_2_AEU3_T12	0CBh	R/W	led_2_aeu3_t2				led_2_aeu3_t1				00h
LED_2_AEU3_T34	0CCh	R/W	led_2_aeu3_t4				led_2_aeu3_t3				00h
LED_2_AEU3_Play back	0CDh	R/W	Reserved						led_2_aeu3_pt		00h
LED_3 Autonomous Animation Registers											

Register Acronym	Address	Type	D7	D6	D5	D4	D3	D2	D1	D0	Default
LED_3_Auto_Pause	0CEh	R/W	led_3_pause_start				led_3_pause_stop				00h
LED_3_Auto_Playback	0CFh	R/W	Reserved		led_3_aeu_num		led_3_pt				00h
LED_3_AEU1_PWM_1	0D0h	R/W	led_3_aeu1_pwm1								00h
LED_3_AEU1_PWM_2	0D1h	R/W	led_3_aeu1_pwm2								00h
LED_3_AEU1_PWM_3	0D2h	R/W	led_3_aeu1_pwm3								00h
LED_3_AEU1_PWM_4	0D3h	R/W	led_3_aeu1_pwm4								00h
LED_3_AEU1_PWM_5	0D4h	R/W	led_3_aeu1_pwm5								00h
LED_3_AEU1_T12	0D5h	R/W	led_3_aeu1_t2				led_3_aeu1_t1				00h
LED_3_AEU1_T34	0D6h	R/W	led_3_aeu1_t4				led_3_aeu1_t3				00h
LED_3_AEU1_Playback	0D7h	R/W	Reserved						led_3_aeu1_pt		00h
LED_3_AEU2_PWM_1	0D8h	R/W	led_3_aeu2_pwm1								00h
LED_3_AEU2_PWM_2	0D9h	R/W	led_3_aeu2_pwm2								00h
LED_3_AEU2_PWM_3	0DAh	R/W	led_3_aeu2_pwm3								00h
LED_3_AEU2_PWM_4	0DBh	R/W	led_3_aeu2_pwm4								00h
LED_3_AEU2_PWM_5	0DCh	R/W	led_3_aeu2_pwm5								00h
LED_3_AEU2_T12	0DDh	R/W	led_3_aeu2_t2				led_3_aeu2_t1				00h
LED_3_AEU2_T34	0DEh	R/W	led_3_aeu2_t4				led_3_aeu2_t3				00h
LED_3_AEU2_Playback	0DFh	R/W	Reserved						led_3_aeu2_pt		00h
LED_3_AEU3_PWM_1	0E0h	R/W	led_3_aeu3_pwm1								00h
LED_3_AEU3_PWM_2	0E1h	R/W	led_3_aeu3_pwm2								00h
LED_3_AEU3_PWM_3	0E2h	R/W	led_3_aeu3_pwm3								00h
LED_3_AEU3_PWM_4	0E3h	R/W	led_3_aeu3_pwm4								00h
LED_3_AEU3_PWM_5	0E4h	R/W	led_3_aeu3_pwm5								00h
LED_3_AEU3_T12	0E5h	R/W	led_3_aeu3_t2				led_3_aeu3_t1				00h
LED_3_AEU3_T34	0E6h	R/W	led_3_aeu3_t4				led_3_aeu3_t3				00h
LED_3_AEU3_Playback	0E7h	R/W	Reserved						led_3_aeu3_pt		00h
LED_A0 Autonomous Animation Registers											
LED_A0_Auto_Pause	0E8h	R/W	led_a0_pause_start				led_a0_pause_stop				00h
LED_A0_Auto_Playback	0E9h	R/W	Reserved		led_a0_aeu_num		led_a0_pt				00h
LED_A0_AEU1_PWM_1	0EAh	R/W	led_a0_aeu1_pwm1								00h

Register Acronym	Address	Type	D7	D6	D5	D4	D3	D2	D1	D0	Default
LED_A0_AEU1_PWM_2	0EBh	R/W	led_a0_aeu1_pwm2								00h
LED_A0_AEU1_PWM_3	0ECh	R/W	led_a0_aeu1_pwm3								00h
LED_A0_AEU1_PWM_4	0EDh	R/W	led_a0_aeu1_pwm4								00h
LED_A0_AEU1_PWM_5	0EEh	R/W	led_a0_aeu1_pwm5								00h
LED_A0_AEU1_T12	0EFh	R/W	led_a0_aeu1_t2				led_a0_aeu1_t1				00h
LED_A0_AEU1_T34	0F0h	R/W	led_a0_aeu1_t4				led_a0_aeu1_t3				00h
LED_A0_AEU1_Playback	0F1h	R/W	Reserved						LED_a0_aeu1_pt		00h
LED_A0_AEU2_PWM_1	0F2h	R/W	led_a0_aeu2_pwm1								00h
LED_A0_AEU2_PWM_2	0F3h	R/W	led_a0_aeu2_pwm2								00h
LED_A0_AEU2_PWM_3	0F4h	R/W	led_a0_aeu2_pwm3								00h
LED_A0_AEU2_PWM_4	0F5h	R/W	led_a0_aeu2_pwm4								00h
LED_A0_AEU2_PWM_5	0F6h	R/W	led_a0_aeu2_pwm5								00h
LED_A0_AEU2_T12	0F7h	R/W	led_a0_aeu2_t2				led_a0_aeu2_t1				00h
LED_A0_AEU2_T34	0F8h	R/W	led_a0_aeu2_t4				led_a0_aeu2_t3				00h
LED_A0_AEU2_Playback	0F9h	R/W	Reserved						LED_a0_aeu2_pt		00h
LED_A0_AEU3_PWM_1	0FAh	R/W	led_a0_aeu3_pwm1								00h
LED_A0_AEU3_PWM_2	0FBh	R/W	led_a0_aeu3_pwm2								00h
LED_A0_AEU3_PWM_3	0FCh	R/W	led_a0_aeu3_pwm3								00h
LED_A0_AEU3_PWM_4	0FDh	R/W	led_a0_aeu3_pwm4								00h
LED_A0_AEU3_PWM_5	0FEh	R/W	led_a0_aeu3_pwm5								00h
LED_A0_AEU3_T12	0FFh	R/W	led_a0_aeu3_t2				led_a0_aeu3_t1				00h
LED_A0_AEU3_T34	100h	R/W	led_a0_aeu3_t4				led_a0_aeu3_t3				00h
LED_A0_AEU3_Playback	101h	R/W	Reserved						LED_a0_aeu3_pt		00h
LED_A1 Autonomous Animation Registers											
LED_A1_Auto_Pause	102h	R/W	led_a1_pause_start				led_a1_pause_stop				00h
LED_A1_Auto_Playback	103h	R/W	Reserved		led_a1_aeu_num		led_a1_pt				00h
LED_A1_AEU1_PWM_1	104h	R/W	led_a1_aeu1_pwm1								00h
LED_A1_AEU1_PWM_2	105h	R/W	led_a1_aeu1_pwm2								00h
LED_A1_AEU1_PWM_3	106h	R/W	led_a1_aeu1_pwm3								00h
LED_A1_AEU1_PWM_4	107h	R/W	led_a1_aeu1_pwm4								00h

Register Acronym	Address	Type	D7	D6	D5	D4	D3	D2	D1	D0	Default
LED_A1_AEU1_PWM_5	108h	R/W	led_a1_aeu1_pwm5								00h
LED_A1_AEU1_T12	109h	R/W	led_a1_aeu1_t2				led_a1_aeu1_t1				00h
LED_A1_AEU1_T34	10Ah	R/W	led_a1_aeu1_t4				led_a1_aeu1_t3				00h
LED_A1_AEU1_Playback	10Bh	R/W	Reserved						led_a1_aeu1_pt		00h
LED_A1_AEU2_PWM_1	10Ch	R/W	led_a1_aeu2_pwm1								00h
LED_A1_AEU2_PWM_2	10Dh	R/W	led_a1_aeu2_pwm2								00h
LED_A1_AEU2_PWM_3	10Eh	R/W	led_a1_aeu2_pwm3								00h
LED_A1_AEU2_PWM_4	10Fh	R/W	led_a1_aeu2_pwm4								00h
LED_A1_AEU2_PWM_5	110h	R/W	led_a1_aeu2_pwm5								00h
LED_A1_AEU2_T12	111h	R/W	led_a1_aeu2_t2				led_a1_aeu2_t1				00h
LED_A1_AEU2_T34	112h	R/W	led_a1_aeu2_t4				led_a1_aeu2_t3				00h
LED_A1_AEU2_Playback	113h	R/W	Reserved						led_a1_aeu2_pt		00h
LED_A1_AEU3_PWM_1	114h	R/W	led_a1_aeu3_pwm1								00h
LED_A1_AEU3_PWM_2	115h	R/W	led_a1_aeu3_pwm2								00h
LED_A1_AEU3_PWM_3	116h	R/W	led_a1_aeu3_pwm3								00h
LED_A1_AEU3_PWM_4	117h	R/W	led_a1_aeu3_pwm4								00h
LED_A1_AEU3_PWM_5	118h	R/W	led_a1_aeu3_pwm5								00h
LED_A1_AEU3_T12	119h	R/W	led_a1_aeu3_t2				led_a1_aeu3_t1				00h
LED_A1_AEU3_T34	11Ah	R/W	led_a1_aeu3_t4				led_a1_aeu3_t3				00h
LED_A1_AEU3_Playback	11Bh	R/W	Reserved						led_a1_aeu3_pt		00h
LED_A2 Autonomous Animation Registers											
LED_A2_Auto_Pause	11Ch	R/W	led_a2_pause_start				led_a2_pause_stop				00h
LED_A2_Auto_Playback	11Dh	R/W	Reserved		led_a2_aeu_num		led_a2_pt				00h
LED_A2_AEU1_PWM_1	11Eh	R/W	led_a2_aeu1_pwm1								00h
LED_A2_AEU1_PWM_2	11Fh	R/W	led_a2_aeu1_pwm2								00h
LED_A2_AEU1_PWM_3	120h	R/W	led_a2_aeu1_pwm3								00h
LED_A2_AEU1_PWM_4	121h	R/W	led_a2_aeu1_pwm4								00h
LED_A2_AEU1_PWM_5	122h	R/W	led_a2_aeu1_pwm5								00h
LED_A2_AEU1_T12	123h	R/W	led_a2_aeu1_t2				led_a2_aeu1_t1				00h
LED_A2_AEU1_T34	124h	R/W	led_a2_aeu1_t4				led_a2_aeu1_t3				00h

Register Acronym	Address	Type	D7	D6	D5	D4	D3	D2	D1	D0	Default	
LED_A2_AEU1_Playback	125h	R/W	Reserved						led_a2_aeu1_pt		00h	
LED_A2_AEU2_PWM_1	126h	R/W	led_a2_aeu2_pwm1									00h
LED_A2_AEU2_PWM_2	127h	R/W	led_a2_aeu2_pwm2									00h
LED_A2_AEU2_PWM_3	128h	R/W	led_a2_aeu2_pwm3									00h
LED_A2_AEU2_PWM_4	129h	R/W	led_a2_aeu2_pwm4									00h
LED_A2_AEU2_PWM_5	12Ah	R/W	led_a2_aeu2_pwm5									00h
LED_A2_AEU2_T12	12Bh	R/W	led_a2_aeu2_t2				led_a2_aeu2_t1					00h
LED_A2_AEU2_T34	12Ch	R/W	led_a2_aeu2_t4				led_a2_aeu2_t3					00h
LED_A2_AEU2_Playback	12Dh	R/W	Reserved						led_a2_aeu2_pt		00h	
LED_A2_AEU3_PWM_1	12Eh	R/W	led_a2_aeu3_pwm1									00h
LED_A2_AEU3_PWM_2	12Fh	R/W	led_a2_aeu3_pwm2									00h
LED_A2_AEU3_PWM_3	130h	R/W	led_a2_aeu3_pwm3									00h
LED_A2_AEU3_PWM_4	131h	R/W	led_a2_aeu3_pwm4									00h
LED_A2_AEU3_PWM_5	132h	R/W	led_a2_aeu3_pwm5									00h
LED_A2_AEU3_T12	133h	R/W	led_a2_aeu3_t2				led_a2_aeu3_t1					00h
LED_A2_AEU3_T34	134h	R/W	led_a2_aeu3_t4				led_a2_aeu3_t3					00h
LED_A2_AEU3_Playback	135h	R/W	Reserved						led_a2_aeu3_pt		00h	
LED_B0 Autonomous Animation Registers												
LED_B0_Auto_Pause	136h	R/W	led_b0_pause_start				led_b0_pause_stop					00h
LED_B0_Auto_Playback	137h	R/W	Reserved		led_b0_aeu_num		led_b0_pt					00h
LED_B0_AEU1_PWM_1	138h	R/W	led_b0_aeu1_pwm1									00h
LED_B0_AEU1_PWM_2	139h	R/W	led_b0_aeu1_pwm2									00h
LED_B0_AEU1_PWM_3	13Ah	R/W	led_b0_aeu1_pwm3									00h
LED_B0_AEU1_PWM_4	13Bh	R/W	led_b0_aeu1_pwm4									00h
LED_B0_AEU1_PWM_5	13Ch	R/W	led_b0_aeu1_pwm5									00h
LED_B0_AEU1_T12	13Dh	R/W	led_b0_aeu1_2				led_b0_aeu1_1					00h
LED_B0_AEU1_T34	13Eh	R/W	led_b0_aeu1_4				led_b0_aeu1_3					00h
LED_B0_AEU1_Playback	13Fh	R/W	Reserved						led_b0_aeu1_pt		00h	
LED_B0_AEU2_PWM_1	140h	R/W	led_b0_aeu2_pwm1									00h
LED_B0_AEU2_PWM_2	141h	R/W	led_b0_aeu2_pwm2									00h

Register Acronym	Address	Type	D7	D6	D5	D4	D3	D2	D1	D0	Default
LED_B0_AEU2_PWM_3	142h	R/W	led_b0_aeu2_pwm3								00h
LED_B0_AEU2_PWM_4	143h	R/W	led_b0_aeu2_pwm4								00h
LED_B0_AEU2_PWM_5	144h	R/W	led_b0_aeu2_pwm5								00h
LED_B0_AEU2_T12	145h	R/W	led_b0_aeu2_2				led_b0_aeu2_1				00h
LED_B0_AEU2_T34	146h	R/W	led_b0_aeu2_4				led_b0_aeu2_3				00h
LED_B0_AEU2_Playback	147h	R/W	Reserved						led_b0_aeu2_pt		00h
LED_B0_AEU3_PWM_1	148h	R/W	led_b0_aeu3_pwm1								00h
LED_B0_AEU3_PWM_2	149h	R/W	led_b0_aeu3_pwm2								00h
LED_B0_AEU3_PWM_3	14Ah	R/W	led_b0_aeu3_pwm3								00h
LED_B0_AEU3_PWM_4	14Bh	R/W	led_b0_aeu3_pwm4								00h
LED_B0_AEU3_PWM_5	14Ch	R/W	led_b0_aeu3_pwm5								00h
LED_B0_AEU3_T12	14Dh	R/W	led_b0_aeu3_2				led_b0_aeu3_1				00h
LED_B0_AEU3_T34	14Eh	R/W	led_b0_aeu3_4				led_b0_aeu3_3				00h
LED_B0_AEU3_Playback	14Fh	R/W	Reserved						led_b0_aeu3_pt		00h
LED_B1 Autonomous Animation Registers											
LED_B1_Auto_Pause	150h	R/W	led_b1_pause_start				led_b1_pause_stop				00h
LED_B1_Auto_Playback	151h	R/W	Reserved		led_b1_aeu_num		led_b1_pt				00h
LED_B1_AEU1_PWM_1	152h	R/W	led_b1_aeu1_pwm1								00h
LED_B1_AEU1_PWM_2	153h	R/W	led_b1_aeu1_pwm2								00h
LED_B1_AEU1_PWM_3	154h	R/W	led_b1_aeu1_pwm3								00h
LED_B1_AEU1_PWM_4	155h	R/W	led_b1_aeu1_pwm4								00h
LED_B1_AEU1_PWM_5	156h	R/W	led_b1_aeu1_pwm5								00h
LED_B1_AEU1_T12	157h	R/W	led_b1_aeu1_t2				led_b1_aeu1_t1				00h
LED_B1_AEU1_T34	158h	R/W	led_b1_aeu1_t4				led_b1_aeu1_t3				00h
LED_B1_AEU1_Playback	159h	R/W	Reserved						led_b1_aeu1_pt		00h
LED_B1_AEU2_PWM_1	15Ah	R/W	led_b1_aeu2_pwm1								00h
LED_B1_AEU2_PWM_2	15Bh	R/W	led_b1_aeu2_pwm2								00h
LED_B1_AEU2_PWM_3	15Ch	R/W	led_b1_aeu2_pwm3								00h
LED_B1_AEU2_PWM_4	15Dh	R/W	led_b1_aeu2_pwm4								00h
LED_B1_AEU2_PWM_5	15Eh	R/W	led_b1_aeu2_pwm5								00h

Register Acronym	Address	Type	D7	D6	D5	D4	D3	D2	D1	D0	Default
LED_B1_AEU2_T12	15Fh	R/W	led_b1_aeu2_t2				led_b1_aeu2_t1				00h
LED_B1_AEU2_T34	160h	R/W	led_b1_aeu2_t4				led_b1_aeu2_t3				00h
LED_B1_AEU2_Playback	161h	R/W	Reserved						led_b1_aeu2_pt		00h
LED_B1_AEU3_PWM_1	162h	R/W	led_b1_aeu3_pwm1								00h
LED_B1_AEU3_PWM_2	163h	R/W	led_b1_aeu3_pwm2								00h
LED_B1_AEU3_PWM_3	164h	R/W	led_b1_aeu3_pwm3								00h
LED_B1_AEU3_PWM_4	165h	R/W	led_b1_aeu3_pwm4								00h
LED_B1_AEU3_PWM_5	166h	R/W	led_b1_aeu3_pwm5								00h
LED_B1_AEU3_T12	167h	R/W	led_b1_aeu3_t2				led_b1_aeu3_t1				00h
LED_B1_AEU3_T34	168h	R/W	led_b1_aeu3_t4				led_b1_aeu3_t3				00h
LED_B1_AEU3_Playback	169h	R/W	Reserved						led_b1_aeu3_pt		00h
LED_B2 Autonomous Animation Registers											
LED_B2_Auto_Pause	16Ah	R/W	led_b2_pause_start				led_b2_pause_stop				00h
LED_B2_Auto_Playback	16Bh	R/W	Reserved		led_b2_aeu_num		led_b2_pt				00h
LED_B2_AEU1_PWM_1	16Ch	R/W	led_b2_aeu1_pwm1								00h
LED_B2_AEU1_PWM_2	16Dh	R/W	led_b2_aeu1_pwm2								00h
LED_B2_AEU1_PWM_3	16Eh	R/W	led_b2_aeu1_pwm3								00h
LED_B2_AEU1_PWM_4	16Fh	R/W	led_b2_aeu1_pwm4								00h
LED_B2_AEU1_PWM_5	170h	R/W	led_b2_aeu1_pwm5								00h
LED_B2_AEU1_T12	171h	R/W	led_b2_aeu1_t2				led_b2_aeu1_t1				00h
LED_B2_AEU1_T34	172h	R/W	led_b2_aeu1_t4				led_b2_aeu1_t3				00h
LED_B2_AEU1_Playback	173h	R/W	Reserved						led_b2_aeu1_pt		00h
LED_B2_AEU2_PWM_1	174h	R/W	led_b2_aeu2_pwm1								00h
LED_B2_AEU2_PWM_2	175h	R/W	led_b2_aeu2_pwm2								00h
LED_B2_AEU2_PWM_3	176h	R/W	led_b2_aeu2_pwm3								00h
LED_B2_AEU2_PWM_4	177h	R/W	led_b2_aeu2_pwm4								00h
LED_B2_AEU2_PWM_5	178h	R/W	led_b2_aeu2_pwm5								00h
LED_B2_AEU2_T12	179h	R/W	led_b2_aeu2_t2				led_b2_aeu2_t1				00h
LED_B2_AEU2_T34	17Ah	R/W	led_b2_aeu2_t4				led_b2_aeu2_t3				00h
LED_B2_AEU2_Playback	17Bh	R/W	Reserved						led_b2_aeu2_pt		00h

Register Acronym	Address	Type	D7	D6	D5	D4	D3	D2	D1	D0	Default
LED_B2_AEU3_PWM_1	17Ch	R/W	led_b2_aeu3_pwm1								00h
LED_B2_AEU3_PWM_2	17Dh	R/W	led_b2_aeu3_pwm2								00h
LED_B2_AEU3_PWM_3	17Eh	R/W	led_b2_aeu3_pwm3								00h
LED_B2_AEU3_PWM_4	17Fh	R/W	led_b2_aeu3_pwm4								00h
LED_B2_AEU3_PWM_5	180h	R/W	led_b2_aeu3_pwm5								00h
LED_B2_AEU3_T12	181h	R/W	led_b2_aeu3_t2				led_b2_aeu3_t1				00h
LED_B2_AEU3_T34	182h	R/W	led_b2_aeu3_t4				led_b2_aeu3_t3				00h
LED_B2_AEU3_Playback	183h	R/W	Reserved						led_b2_aeu3_pt		00h
LED_C0 Autonomous Animation Registers											
LED_C0_Auto_Pause	184h	R/W	led_c0_pause_start				led_c0_pause_stop				00h
LED_C0_Auto_Playback	185h	R/W	Reserved		led_c0_aeu_num		led_c0_pt				00h
LED_C0_AEU1_PWM_1	186h	R/W	led_c0_aeu1_pwm1								00h
LED_C0_AEU1_PWM_2	187h	R/W	led_c0_aeu1_pwm2								00h
LED_C0_AEU1_PWM_3	188h	R/W	led_c0_aeu1_pwm3								00h
LED_C0_AEU1_PWM_4	189h	R/W	led_c0_aeu1_pwm4								00h
LED_C0_AEU1_PWM_5	18Ah	R/W	led_c0_aeu1_pwm5								00h
LED_C0_AEU1_T12	18Bh	R/W	led_c0_aeu1_t2				led_c0_aeu1_t1				00h
LED_C0_AEU1_T34	18Ch	R/W	led_c0_aeu1_t4				led_c0_aeu1_t3				00h
LED_C0_AEU1_Playback	18Dh	R/W	Reserved						led_c0_aeu1_pt		00h
LED_C0_AEU2_PWM_1	18Eh	R/W	led_c0_aeu2_pwm1								00h
LED_C0_AEU2_PWM_2	18Fh	R/W	led_c0_aeu2_pwm2								00h
LED_C0_AEU2_PWM_3	190h	R/W	led_c0_aeu2_pwm3								00h
LED_C0_AEU2_PWM_4	191h	R/W	led_c0_aeu2_pwm4								00h
LED_C0_AEU2_PWM_5	192h	R/W	led_c0_aeu2_pwm5								00h
LED_C0_AEU2_T12	193h	R/W	led_c0_aeu2_t2				led_c0_aeu2_t1				00h
LED_C0_AEU2_T34	194h	R/W	led_c0_aeu2_t4				led_c0_aeu2_t3				00h
LED_C0_AEU2_Playback	195h	R/W	Reserved						led_c0_aeu2_pt		00h
LED_C0_AEU3_PWM_1	196h	R/W	led_c0_aeu3_pwm1								00h
LED_C0_AEU3_PWM_2	197h	R/W	led_c0_aeu3_pwm2								00h
LED_C0_AEU3_PWM_3	198h	R/W	led_c0_aeu3_pwm3								00h

Register Acronym	Address	Type	D7	D6	D5	D4	D3	D2	D1	D0	Default
LED_C0_AEU3_PWM_4	199h	R/W	led_c0_aeu3_pwm4								00h
LED_C0_AEU3_PWM_5	19Ah	R/W	led_c0_aeu3_pwm5								00h
LED_C0_AEU3_T12	19Bh	R/W	led_c0_aeu3_t2				led_c0_aeu3_t1				00h
LED_C0_AEU3_T34	19Ch	R/W	led_c0_aeu3_t4				led_c0_aeu3_t3				00h
LED_C0_AEU3_Playback	19Dh	R/W	Reserved						led_c0_aeu3_pt		00h
LED_C1 Autonomous Animation Registers											
LED_C1_Auto_Pause	19Eh	R/W	led_c1_pause_start				led_c1_pause_stop				00h
LED_C1_Auto_Playback	19Fh	R/W	Reserved		led_c1_aeu_num		led_c1_pt				00h
LED_C1_AEU1_PWM_1	1A0h	R/W	led_c1_aeu1_pwm1								00h
LED_C1_AEU1_PWM_2	1A1h	R/W	led_c1_aeu1_pwm2								00h
LED_C1_AEU1_PWM_3	1A2h	R/W	led_c1_aeu1_pwm3								00h
LED_C1_AEU1_PWM_4	1A3h	R/W	led_c1_aeu1_pwm4								00h
LED_C1_AEU1_PWM_5	1A4h	R/W	led_c1_aeu1_pwm5								00h
LED_C1_AEU1_T12	1A5h	R/W	led_c1_aeu1_t2				led_c1_aeu1_t1				00h
LED_C1_AEU1_T34	1A6h	R/W	led_c1_aeu1_t4				led_c1_aeu1_t3				00h
LED_C1_AEU1_Playback	1A7h	R/W	Reserved						led_c1_aeu1_pt		00h
LED_C1_AEU2_PWM_1	1A8h	R/W	led_c1_aeu2_pwm1								00h
LED_C1_AEU2_PWM_2	1A9h	R/W	led_c1_aeu2_pwm2								00h
LED_C1_AEU2_PWM_3	1AAh	R/W	led_c1_aeu2_pwm3								00h
LED_C1_AEU2_PWM_4	1ABh	R/W	led_c1_aeu2_pwm4								00h
LED_C1_AEU2_PWM_5	1ACh	R/W	led_c1_aeu2_pwm5								00h
LED_C1_AEU2_T12	1ADh	R/W	led_c1_aeu2_t2				led_c1_aeu2_t1				00h
LED_C1_AEU2_T34	1AEh	R/W	led_c1_aeu2_t4				led_c1_aeu2_t3				00h
LED_C1_AEU2_Playback	1AFh	R/W	Reserved						led_c1_aeu2_pt		00h
LED_C1_AEU3_PWM_1	1B0h	R/W	led_c1_aeu3_pwm1								00h
LED_C1_AEU3_PWM_2	1B1h	R/W	led_c1_aeu3_pwm2								00h
LED_C1_AEU3_PWM_3	1B2h	R/W	led_c1_aeu3_pwm3								00h
LED_C1_AEU3_PWM_4	1B3h	R/W	led_c1_aeu3_pwm4								00h
LED_C1_AEU3_PWM_5	1B4h	R/W	led_c1_aeu3_pwm5								00h
LED_C1_AEU3_T12	1B5h	R/W	led_c1_aeu3_t2				led_c1_aeu3_t1				00h

Register Acronym	Address	Type	D7	D6	D5	D4	D3	D2	D1	D0	Default
LED_C1_AEU3_T34	1B6h	R/W	led_c1_aeu3_t4				led_c1_aeu3_t3				00h
LED_C1_AEU3_Playback	1B7h	R/W	Reserved						led_c1_aeu3_pt		00h
LED_C2 Autonomous Animation Registers											
LED_C2_Auto_Pause	1B8h	R/W	led_c2_pause_start				led_c2_pause_stop				00h
LED_C2_Auto_Playback	1B9h	R/W	Reserved		led_c2_aeu_num		led_c2_pt				00h
LED_C2_AEU1_PWM_1	1BAh	R/W	led_c2_aeu1_pwm1								00h
LED_C2_AEU1_PWM_2	1BBh	R/W	led_c2_aeu1_pwm2								00h
LED_C2_AEU1_PWM_3	1BCh	R/W	led_c2_aeu1_pwm3								00h
LED_C2_AEU1_PWM_4	1BDh	R/W	led_c2_aeu1_pwm4								00h
LED_C2_AEU1_PWM_5	1BEh	R/W	led_c2_aeu1_pwm5								00h
LED_C2_AEU1_T12	1BFh	R/W	led_c2_aeu1_t2				led_c2_aeu1_t1				00h
LED_C2_AEU1_T34	1C0h	R/W	led_c2_aeu1_t4				led_c2_aeu1_t3				00h
LED_C2_AEU1_Playback	1C1h	R/W	Reserved						led_c2_aeu1_pt		00h
LED_C2_AEU2_PWM_1	1C2h	R/W							led_c2_aeu2_pwm1		
LED_C2_AEU2_PWM_2	1C3h	R/W	led_c2_aeu2_pwm2								00h
LED_C2_AEU2_PWM_3	1C4h	R/W	led_c2_aeu2_pwm3								00h
LED_C2_AEU2_PWM_4	1C5h	R/W	led_c2_aeu2_pwm4								00h
LED_C2_AEU2_PWM_5	1C6h	R/W	led_c2_aeu2_pwm5								00h
LED_C2_AEU2_T12	1C7h	R/W	led_c2_aeu2_t2				led_c2_aeu2_t1				00h
LED_C2_AEU2_T34	1C8h	R/W	led_c2_aeu2_t4				led_c2_aeu2_t3				00h
LED_C2_AEU2_Playback	1C9h	R/W	Reserved						led_c2_aeu2_pt		00h
LED_C2_AEU3_PWM_1	1CAh	R/W							led_c2_aeu3_pwm1		
LED_C2_AEU3_PWM_2	1CBh	R/W	led_c2_aeu3_pwm2								00h
LED_C2_AEU3_PWM_3	1CCh	R/W	led_c2_aeu3_pwm3								00h
LED_C2_AEU3_PWM_4	1CDh	R/W	led_c2_aeu3_pwm4								00h
LED_C2_AEU3_PWM_5	1CEh	R/W	led_c2_aeu3_pwm5								00h
LED_C2_AEU3_T12	1CFh	R/W	led_c2_aeu3_t2				led_c2_aeu3_t1				00h
LED_C2_AEU3_T34	1D0h	R/W	led_c2_aeu3_t4				led_c2_aeu3_t3				00h
LED_C2_AEU3_Playback	1D1h	R/W	Reserved						led_c2_aeu3_pt		00h
LED_D0 Autonomous Animation Registers											

Register Acronym	Address	Type	D7	D6	D5	D4	D3	D2	D1	D0	Default
LED_D0_Auto_Pause	1D2h	R/W	led_d0_pause_start				led_d0_pause_stop				00h
LED_D0_Auto_Playback	1D3h	R/W	Reserved		led_d0_aeu_num		led_d0_pt				00h
LED_D0_AEU1_PWM_1	1D4h	R/W	led_d0_aeu1_pwm1								00h
LED_D0_AEU1_PWM_2	1D5h	R/W	led_d0_aeu1_pwm2								00h
LED_D0_AEU1_PWM_3	1D6h	R/W	led_d0_aeu1_pwm3								00h
LED_D0_AEU1_PWM_4	1D7h	R/W	led_d0_aeu1_pwm4								00h
LED_D0_AEU1_PWM_5	1D8h	R/W	led_d0_aeu1_pwm5								00h
LED_D0_AEU1_T12	1D9h	R/W	led_d0_aeu1_t2				led_d0_aeu1_t1				00h
LED_D0_AEU1_T34	1DAh	R/W	led_d0_aeu1_t4				led_d0_aeu1_t3				00h
LED_D0_AEU1_Playback	1DBh	R/W	Reserved						led_d0_aeu1_pt		00h
LED_D0_AEU2_PWM_1	1DCh	R/W	led_d0_aeu2_pwm1								00h
LED_D0_AEU2_PWM_2	1DDh	R/W	led_d0_aeu2_pwm2								00h
LED_D0_AEU2_PWM_3	1DEh	R/W	led_d0_aeu2_pwm3								00h
LED_D0_AEU2_PWM_4	1DFh	R/W	led_d0_aeu2_pwm4								00h
LED_D0_AEU2_PWM_5	1E0h	R/W	led_d0_aeu2_pwm5								00h
LED_D0_AEU2_T12	1E1h	R/W	led_d0_aeu2_t2				led_d0_aeu2_t1				00h
LED_D0_AEU2_T34	1E2h	R/W	led_d0_aeu2_t4				led_d0_aeu2_t3				00h
LED_D0_AEU2_Playback	1E3h	R/W	Reserved						led_d0_aeu2_pt		00h
LED_D0_AEU3_PWM_1	1E4h	R/W	led_d0_aeu3_pwm1								00h
LED_D0_AEU3_PWM_2	1E5h	R/W	led_d0_aeu3_pwm2								00h
LED_D0_AEU3_PWM_3	1E6h	R/W	led_d0_aeu3_pwm3								00h
LED_D0_AEU3_PWM_4	1E7h	R/W	led_d0_aeu3_pwm4								00h
LED_D0_AEU3_PWM_5	1E8h	R/W	led_d0_aeu3_pwm5								00h
LED_D0_AEU3_T12	1E9h	R/W	led_d0_aeu3_t2				led_d0_aeu3_t1				00h
LED_D0_AEU3_T34	1EAh	R/W	led_d0_aeu3_t4				led_d0_aeu3_t3				00h
LED_D0_AEU3_Playback	1EBh	R/W	Reserved						led_d0_aeu3_pt		00h
LED_D1 Autonomous Animation Registers											
LED_D1_Auto_Pause	1ECh	R/W	led_d1_pause_start				led_d1_pause_stop				00h
LED_D1_Auto_Playback	1EDh	R/W	Reserved		led_d1_aeu_num		led_d1_pt				00h
LED_D1_AEU1_PWM_1	1EEh	R/W	led_d1_aeu1_pwm1								00h

Register Acronym	Address	Type	D7	D6	D5	D4	D3	D2	D1	D0	Default
LED_D1_AEU1_PWM_2	1EFh	R/W	led_d1_aeu1_pwm2								00h
LED_D1_AEU1_PWM_3	1F0h	R/W	led_d1_aeu1_pwm3								00h
LED_D1_AEU1_PWM_4	1F1h	R/W	led_d1_aeu1_pwm4								00h
LED_D1_AEU1_PWM_5	1F2h	R/W	led_d1_aeu1_pwm5								00h
LED_D1_AEU1_T12	1F3h	R/W	led_d1_aeu1_t2				led_d1_aeu1_t1				00h
LED_D1_AEU1_T34	1F4h	R/W	led_d1_aeu1_t4				led_d1_aeu1_t3				00h
LED_D1_AEU1_Playback	1F5h	R/W	Reserved						led_d1_aeu1_pt		00h
LED_D1_AEU2_PWM_1	1F6h	R/W	led_d1_aeu2_pwm1								00h
LED_D1_AEU2_PWM_2	1F7h	R/W	led_d1_aeu2_pwm2								00h
LED_D1_AEU2_PWM_3	1F8h	R/W	led_d1_aeu2_pwm3								00h
LED_D1_AEU2_PWM_4	1F9h	R/W	led_d1_aeu2_pwm4								00h
LED_D1_AEU2_PWM_5	1FAh	R/W	led_d1_aeu2_pwm5								00h
LED_D1_AEU2_T12	1FBh	R/W	led_d1_aeu2_t2				led_d1_aeu2_t1				00h
LED_D1_AEU2_T34	1FCh	R/W	led_d1_aeu2_t4				led_d1_aeu2_t3				00h
LED_D1_AEU2_Playback	1FDh	R/W	Reserved						led_d1_aeu2_pt		00h
LED_D1_AEU3_PWM_1	1FEh	R/W	led_d1_aeu3_pwm1								00h
LED_D1_AEU3_PWM_2	1FFh	R/W	led_d1_aeu3_pwm2								00h
LED_D1_AEU3_PWM_3	200h	R/W	led_d1_aeu3_pwm3								00h
LED_D1_AEU3_PWM_4	201h	R/W	led_d1_aeu3_pwm4								00h
LED_D1_AEU3_PWM_5	202h	R/W	led_d1_aeu3_pwm5								00h
LED_D1_AEU3_T12	203h	R/W	led_d1_aeu3_t2				led_d1_aeu3_t1				00h
LED_D1_AEU3_T34	204h	R/W	led_d1_aeu3_t4				led_d1_aeu3_t3				00h
LED_D1_AEU3_Playback	205h	R/W	Reserved						led_d1_aeu3_pt		00h
LED_D2 Autonomous Animation Registers											
LED_D2_Auto_Pause	206h	R/W	led_d2_pause_start				led_d2_pause_stop				00h
LED_D2_Auto_Playback	207h	R/W	Reserved		led_d2_aeu_num		led_d2_pt				00h
LED_D2_AEU1_PWM_1	208h	R/W	led_d2_aeu1_pwm1								00h
LED_D2_AEU1_PWM_2	209h	R/W	led_d2_aeu1_pwm2								00h
LED_D2_AEU1_PWM_3	20Ah	R/W	led_d2_aeu1_pwm3								00h
LED_D2_AEU1_PWM_4	20Bh	R/W	led_d2_aeu1_pwm4								00h

Register Acronym	Address	Type	D7	D6	D5	D4	D3	D2	D1	D0	Default
LED_D2_AEU1_PWM_5	20Ch	R/W	led_d2_aeu1_pwm5								00h
LED_D2_AEU1_T12	20Dh	R/W	led_d2_aeu1_t2				led_d2_aeu1_t1				00h
LED_D2_AEU1_T34	20Eh	R/W	led_d2_aeu1_t4				led_d2_aeu1_t3				00h
LED_D2_AEU1_Pla yback	20Fh	R/W	Reserved						led_d2_aeu1_pt		00h
LED_D2_AEU2_PWM_1	210h	R/W	led_d2_aeu2_pwm1								00h
LED_D2_AEU2_PWM_2	211h	R/W	led_d2_aeu2_pwm2								00h
LED_D2_AEU2_PWM_3	212h	R/W	led_d2_aeu2_pwm3								00h
LED_D2_AEU2_PWM_4	213h	R/W	led_d2_aeu2_pwm4								00h
LED_D2_AEU2_PWM_5	214h	R/W	led_d2_aeu2_pwm5								00h
LED_D2_AEU2_T12	215h	R/W	led_d2_aeu2_t2				led_d2_aeu2_t1				00h
LED_D2_AEU2_T34	216h	R/W	led_d2_aeu2_t4				led_d2_aeu2_t3				00h
LED_D2_AEU2_Pla yback	217h	R/W	Reserved						led_d2_aeu2_pt		00h
LED_D2_AEU3_PWM_1	218h	R/W	led_d2_aeu3_pwm1								00h
LED_D2_AEU3_PWM_2	219h	R/W	led_d2_aeu3_pwm2								00h
LED_D2_AEU3_PWM_3	21Ah	R/W	led_d2_aeu3_pwm3								00h
LED_D2_AEU3_PWM_4	21Bh	R/W	led_d2_aeu3_pwm4								00h
LED_D2_AEU3_PWM_5	21Ch	R/W	led_d2_aeu3_pwm5								00h
LED_D2_AEU3_T12	21Dh	R/W	led_d2_aeu3_t2				led_d2_aeu3_t1				00h
LED_D2_AEU3_T34	21Eh	R/W	led_d2_aeu3_t4				led_d2_aeu3_t3				00h
LED_D2_AEU3_Pla yback	21Fh	R/W	Reserved						led_d2_aeu3_pt		00h
Flag Registers											
TSD_Config_Status	300h	R	Reserved						tsd_Status	config_err_status	00h
LOD_Status_0	301h	R	lod_status_b0	lod_status_a2	lod_status_a1	lod_status_a0	lod_status_3	lod_status_2	lod_status_1	lod_status_0	00h
LOD_Status_1	302h	R	lod_status_d0	lod_status_d1	lod_status_d0	lod_status_c2	lod_status_c1	lod_status_c0	lod_status_b2	lod_status_b1	00h
LSD_Status_0	303h	R	lsd_status_b0	lsd_status_a2	lsd_status_a1	lsd_status_a0	lsd_status_3	lsd_status_2	lsd_status_1	lsd_status_0	00h
LSD_Status_1	304h	R	lsd_status_d0	lsd_status_d1	lsd_status_d0	lsd_status_c2	lsd_status_c1	lsd_status_c0	lsd_status_b2	lsd_status_b1	00h
Auto_PWM_0	305h	R	pwm_auto_0								00h
Auto_PWM_1	306h	R	pwm_auto_1								00h
Auto_PWM_2	307h	R	pwm_auto_2								00h
Auto_PWM_3	308h	R	pwm_auto_3								00h
Auto_PWM_4	309h	R	pwm_auto_a0								00h
Auto_PWM_5	30Ah	R	pwm_auto_a1								00h
Auto_PWM_6	30Bh	R	pwm_auto_a2								00h

Register Acronym	Address	Type	D7	D6	D5	D4	D3	D2	D1	D0	Default
Auto_PWM_7	30Ch	R	pwm_auto_b0								00h
Auto_PWM_8	30Dh	R	pwm_auto_b1								00h
Auto_PWM_9	30Eh	R	pwm_auto_b2								00h
Auto_PWM_10	30Fh	R	pwm_auto_c0								00h
Auto_PWM_11	310h	R	pwm_auto_c1								00h
Auto_PWM_12	311h	R	pwm_auto_c2								00h
Auto_PWM_13	312h	R	pwm_auto_d0								00h
Auto_PWM_14	313h	R	pwm_auto_d1								00h
Auto_PWM_15	314h	R	pwm_auto_d2								00h
AEP_Status_0	315h	R	Reserved		aep_status_1			aep_status_0			3Fh
AEP_Status_1	316h	R	Reserved		aep_status_3			aep_status_2			3Fh
AEP_Status_2	317h	R	Reserved		aep_status_a1			aep_status_a0			3Fh
AEP_Status_3	318h	R	Reserved		aep_status_b0			aep_status_a2			3Fh
AEP_Status_4	319h	R	Reserved		aep_status_b2			aep_status_b1			3Fh
AEP_Status_5	31Ah	R	Reserved		aep_status_c1			aep_status_c0			3Fh
AEP_Status_6	31Bh	R	Reserved		aep_status_d0			aep_status_c2			3Fh
AEP_Status_7	31Ch	R	Reserved		aep_status_d2			aep_status_d1			3Fh

10 Application and Implementation

备注

Information in the following applications sections is not part of the TI component specification, and TI does not warrant its accuracy or completeness. TI's customers are responsible for determining suitability of components for their purposes, as well as validating and testing their design implementation to confirm system functionality.

10.1 Application Information

The LP5813 is a 12 LEDs synchronous boost RGB LED driver with autonomous animation engine control. The device is ideal to support battery-powered applications with 0.5 V to 5.5 V input voltage range. The LP5813 has ultra-low operation current at active mode, and it only consumes 0.4 mA when LED current is set at 25mA. In battery powered applications like e-tag, earbud, e-cigarettes, VR headset, RGB mouse, smart speaker, and other handheld devices, LP5813 is ideal to provide premium LED lighting effects with low power consumption and small package.

10.2 Typical Application

10.2.1 Application

图 10-1 shows an example of typical application, which uses one LP5813 to drive RGB LEDs through I²C communication.

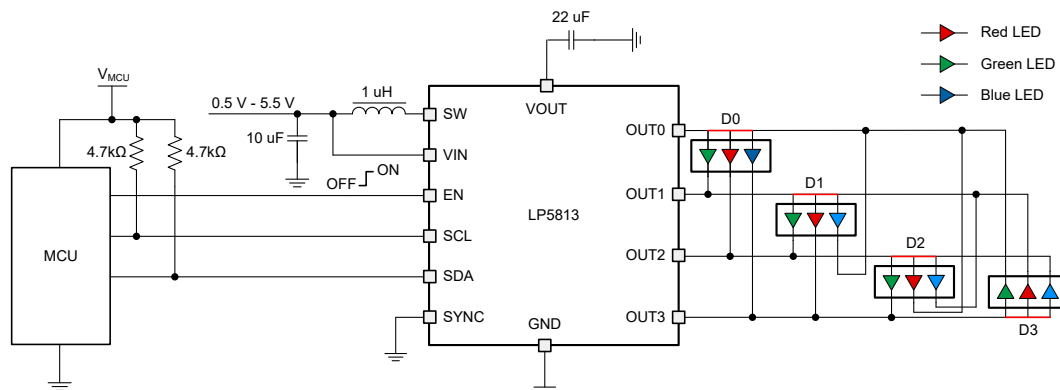


图 10-1. Typical Application - LP5813 Driving RGB LEDs

图 10-2 shows an example when the boost converter is not need to be used. Directly supply the power the VOUT and pull EN to low can bypass the integrated boost converter and operate the LED driver blocks.

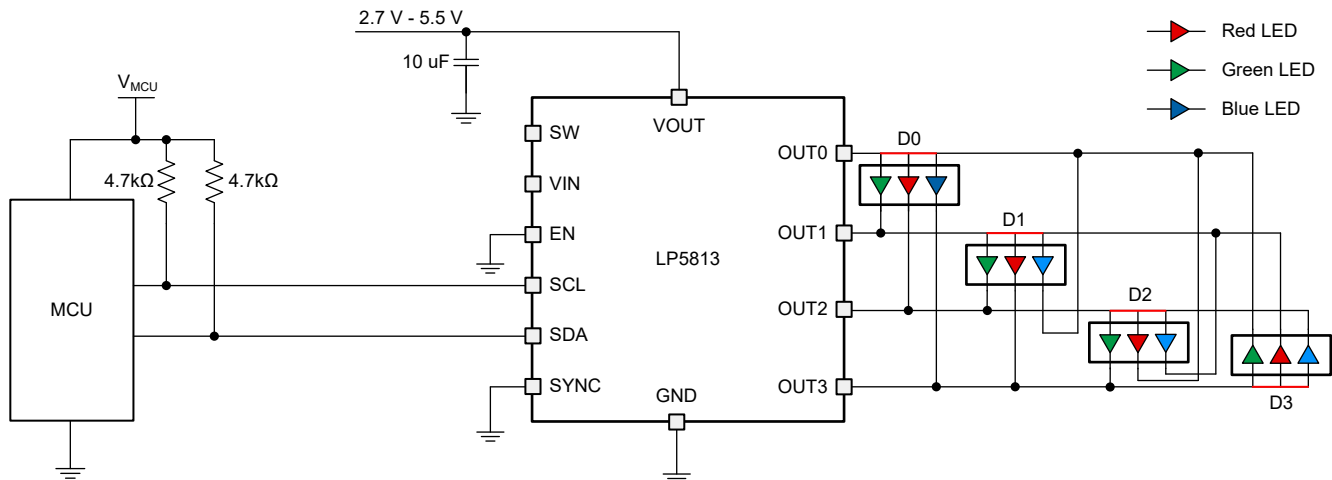


图 10-2. Typical Application - LP5813 Bypassing the Boost Converter

图 10-3 shows the connection for 2 pcs LP5813 to drive 8 RGB LEDs (24 LEDs). One LP5813 (Device 0) can work as main part to provide boost voltage for all 8 RGB LEDs, while another LP5813 (Device 1) can work as bypassing boost converter application to save one inductor. If autonomous animation need to be performed, to avoid animation mismatch between two devices in long-time operation, 'vsync_out_en' bit in Dev_Config_11 register of one device need to be set as 1h to provide the same clock to another device.

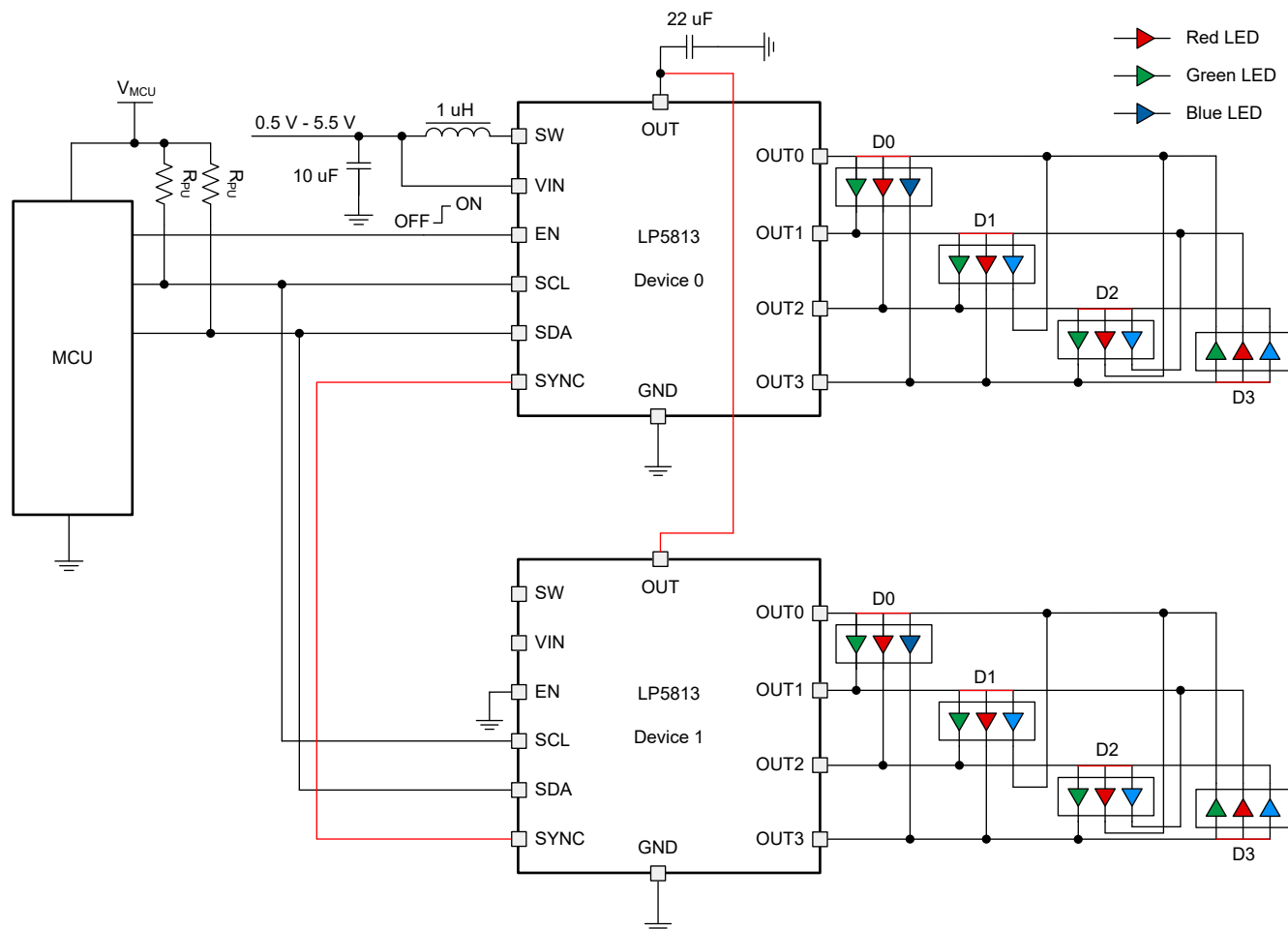


图 10-3. Typical Application - Dual LP5813 Application Example

10.2.2 Design Parameters

表 10-1 shows the typical design parameters of [Typical Application 1](#).

表 10-1. Design Parameters

PARAMETER	VALUE
Input voltage	3.6 V to 4.2 V by one Li-on battery cell
Output voltage	4.5 V
Inductor	1 μ H
Output capacitor	22 μ F
RGB LED count	4
LED maximum average current (red, green, blue)	12.75 mA, 10.2 mA, 10.2 mA
LED peak current (red, green, blue)	51 mA, 40.8 mA, 40.8 mA
LED PWM frequency	6 kHz

The different color of LEDs are put as below configuration.

Red LEDs: LED_A1, LED_B1, LED_C1, LED_D1

Green LEDs: LED_A0, LED_B0, LED_C0, LED_D0

Blue LEDs: LED_A2, LED_B2, LED_C2, LED_D2

10.2.3 Detailed Design Procedure

This section will showcase the detailed design procedures for LP5813 including boost components selection, LED driver manual and autonomous modes application examples.

10.2.3.1 Inductor Selection

The inductor is the most important component in power regulator design, which affects steady-state operation, transient behavior, and loop stability. There are three important inductor specifications, inductor value, saturation current, and dc resistance (DCR).

The integrated boost converter in LP5813 is designed to work with inductor values between 0.37 μ H and 2.9 μ H. 1 μ H is recommended in typical application. The inductor peak current can be calculated by [方程式 10](#). Using the minimum input voltage, maximum output voltage, and maximum load current of the application can calculate the worst case.

In a boost regulator, the inductor dc current can be calculated by [方程式 8](#).

$$\Delta I_{L(DC)} = \frac{V_{OUT} \times I_{OUT}}{V_{IN} \times \eta} \quad (8)$$

where

- V_{OUT} is the output voltage of the boost converter
- I_{OUT} is the output current of the boost converter
- V_{IN} is the input voltage of the boost converter
- η is the power-conversion efficiency, use 90% for most cases

The inductor ripple current is calculated by [方程式 9](#).

$$\Delta I_{L(P-P)} = \frac{V_{IN} \times D}{L \times f_{SW}} \quad (9)$$

where

- D is the duty cycle, which can be calculated by [方程式 2](#)

- L is the inductance value of the inductor
- f_{SW} is the switching frequency
- V_{IN} is the input voltage of the boost converter

Therefore, the inductor peak current is calculated by [方程式 10](#).

$$\Delta I_{L(P)} = \Delta I_{L(DC)} + \frac{\Delta I_{L(P-P)}}{2} \quad (10)$$

Inductor peak-to-peak current is recommended to be designed less than 40% of the average inductor current, with maximum output current setting. Large inductor value reduces the magnetic hysteresis losses in the inductor and improves EMI performance with small inductor ripple, but the load transient response time increases. The saturation current of the inductor must be higher than the calculated peak inductor current.

表 10-2. Recommended Inductors

Part Number	L (μH)	DCR MAX (mΩ)	SATURATION CURRENT (A)	SIZE L×W×H (mm)	VENDOR
XEL4030-102ME	1	9.78	9.0	4.0 × 4.0 × 3.1	Coilcraft
74438357010	1	13.5	9.6	4.1 × 4.1 × 3.1	Würth Elektronik
HBME042A-1R0MS-99	1	11.5	7.0	4.1 × 4.1 × 2.1	Cyntec

10.2.3.2 Output Capacitor Selection

The output capacitor is selected to meet the requirements of output ripple and loop stability. The ripple voltage is related to capacitor capacitance and equivalent series resistance (ESR). Assuming a ceramic capacitor with zero ESR, the minimum capacitance for a given ripple voltage can be calculated by [方程式 11](#).

$$C_{OUT} = \frac{I_{OUT} \times D_{MAX}}{f_{SW} \times V_{RIPPLE}} \quad (11)$$

where

- D_{MAX} is the maximum switching duty cycle
- V_{RIPPLE} is the peak-to-peak output ripple voltage
- I_{OUT} is the maximum output current
- f_{SW} is the switching frequency

The ESR impact on the output ripple must be considered if tantalum or aluminum electrolytic capacitors are used. The output peak-to-peak ripple voltage caused by the ESR of the output capacitors can be calculated by [方程式 12](#).

$$V_{RIPPLE(ESR)} = I_{L(P)} \times R_{ESR} \quad (12)$$

The derating of a ceramic capacitor under dc bias voltage, aging, and ac signal need to be considered during design. For example, the dc bias voltage can significantly reduce capacitance. A ceramic capacitor can lose more than 50% of capacitance at the rated voltage. Therefore, enough the voltage rating margin must be left to get adequate capacitance at the required output voltage. Increasing the output capacitor can make the output ripple voltage smaller in PWM mode.

TI recommends using the X5R or X7R ceramic output capacitor in the range of 4 μF to 1000 μF effective capacitance. 10 μF effective capacitance is recommended in typical application, which means around 22 μF rated capacitance. If the output capacitor is below the range, the boost regulator can potentially become unstable.

10.2.3.3 Input Capacitor Selection

Multilayer X5R or X7R ceramic capacitors are excellent choices for the input decoupling of the integrated boost converter, because of the extremely low ESR and small footprint. Input capacitors must be located as close as possible to the device. While a 10- μ F input capacitor is sufficient for most applications, large capacitance is used to reduce input current ripple. When the input power is supplied through long wire and only ceramic capacitor is put, the load step at the output induces ringing at the VIN pin. This ringing couples back to the output and influence loop stability or even damage the device. In this circumstance, placing additional bulk capacitance (tantalum or aluminum electrolytic capacitor) between ceramic input capacitor and the power supply can reduce the ringing

10.2.3.4 Program Procedure

After VIN powering up, the boost converter can be enabled by pulling EN to High. After around 1 ms for boost output and internal oscillator stable, the device can be initialized by configuring chip_en = 1. Then the CONFIG registers can be set to the expected configuration. After updating the CONFIG registers, one update command must to be sent to make the configuration effective. Either manual mode or autonomous mode can be selected for each LED. A new configuration is only effective once update command is received.

The detailed program procedure is illustrated as:

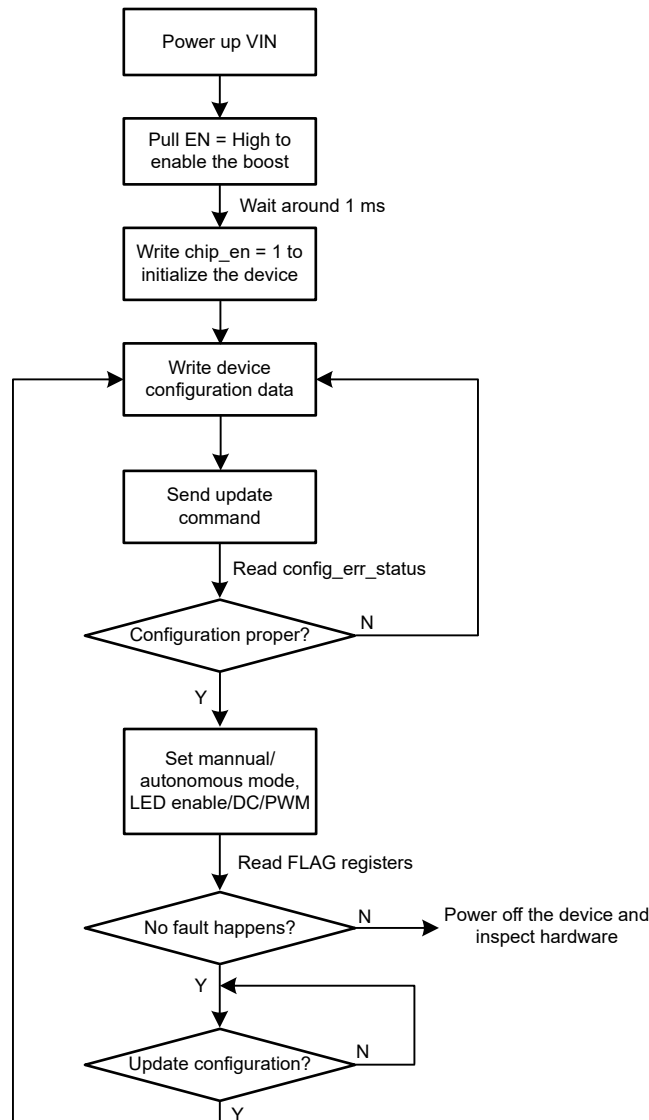


图 10-4. Program Procedure

10.2.3.5 Programming Example

To get the design parameters in 表 10-1, the following program steps can be referred.

After properly providing the power supplies to LP5813,

1. Set chip_en = 1 to enable the device. **(Write 01h to register 000h)**
2. Set boost_vout = Fh to set 4.5 V boost output voltage, and max_current = 1h to set 51 mA maximum output LED current. **(Write 1Fh to register 001h)**
3. Set led_mode = 4h to configure the LED drive mode as TCM 4 scans. **(Write 20h to register 002h)**
4. Set lsd_threshold = 3h is recommended to avoid incorrect LSD detection. **(Write 0Bh to register 00Dh)**

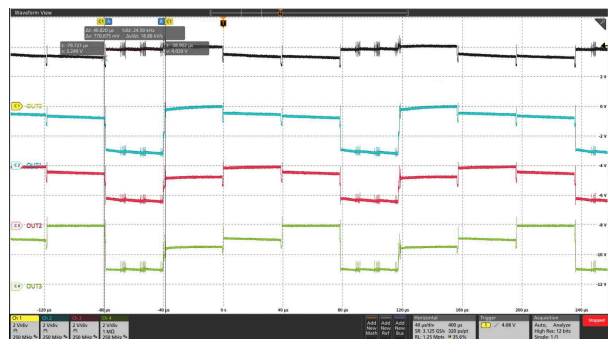
Let the PWM frequency, scan order, manual or autonomous mode, linear or exponential dimming curve, phase align method, vsync mode, blank time, clamp settings as default. (In other application requirements, these functions can be set)

5. Send update command to complete configuration settings **(Write 55h to register 010h)**
6. Read back config_err_status to check if the configuration is proper **(Read register 300h)**
7. Enable all 12 LEDs **(Write F0h to register 020h and FFh to register 021h)**

8. Set 50 mA peak current for red LEDs (**Write FFh to registers 035h, 038h, 03Bh, 03Eh**), and 40 mA peak current for green and blue LEDs (**Write CCh to registers 034h, 036h, 037h, 039h, 03Ah, 03Ch, 03Dh, 03Fh**)
9. Set 100% duty cycle to illuminate the LEDs (**Write FFh to registers 044h - 04Fh**)

10.2.4 Application Performance Plots

The following figures show the application performance plots.

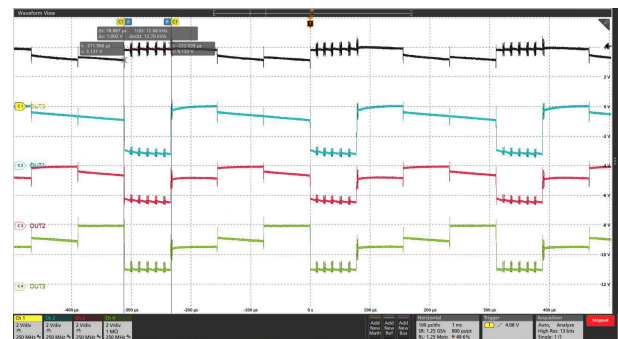


PWM frequency = 24 kHz

LED_A0/A1/A2
enable

led_mode = 4h

图 10-5. Scan Lines and Current Sinks Waveforms of OUT0, OUT1, OUT2, OUT3

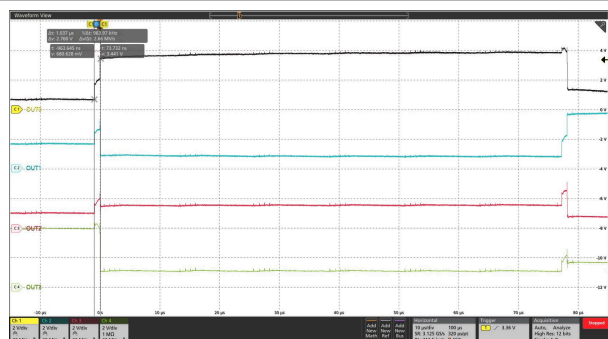


PWM frequency = 12 kHz

LED_A0/A1/A2
enable

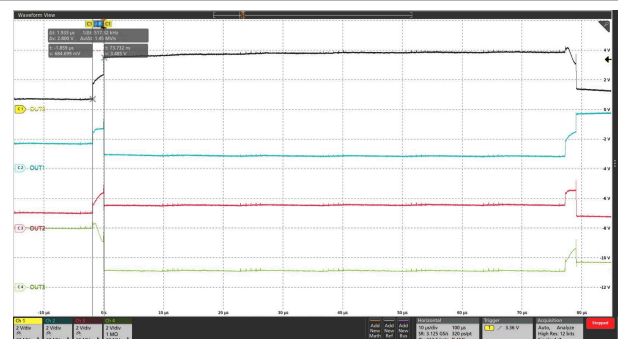
led_mode = 4h

图 10-6. Scan Lines and Current Sinks Waveforms of OUT0, OUT1, OUT2, OUT3



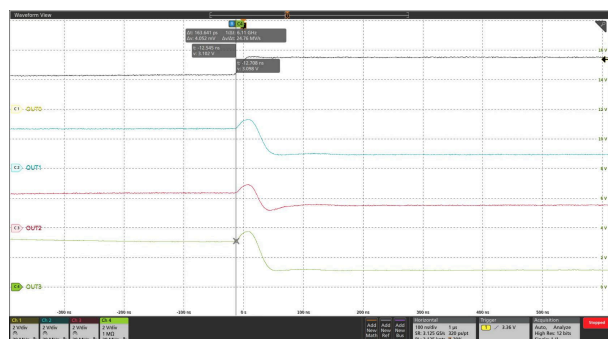
Switch blank time $t_{SW_BLK} = 1 \mu s$

图 10-7. Scan Lines Switching Waveforms of OUT0, OUT1, OUT2, OUT3



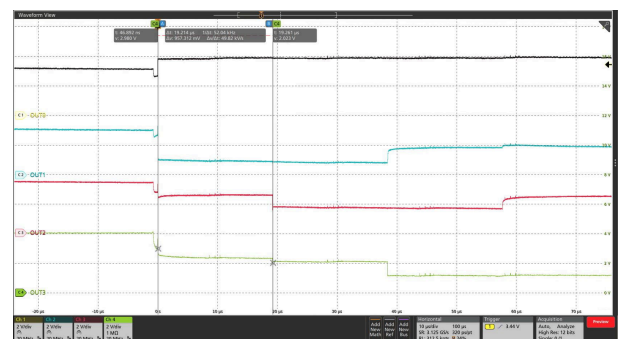
Switch blank time $t_{SW_BLK} = 2 \mu s$

图 10-8. Scan Lines Switching Waveforms of OUT0, OUT1, OUT2, OUT3



phase_align_a0 = 0h, phase_align_a1 = 0h, phase_align_a2 = 0h, PWM = 127

图 10-9. PWM Alignment Disabled



phase_align_a0 = 1h, phase_align_a1 = 2h, phase_align_a2 = 3h, PWM = 127

图 10-10. PWM Alignment Enabled

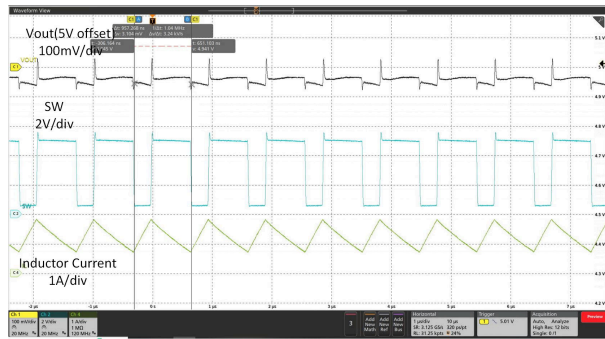

 $V_{IN} = 3.6\text{ V}, V_{OUT} = 5\text{ V}, I_{OUT} = 1\text{ A}$

图 10-11. Switching Waveform at Heavy Load

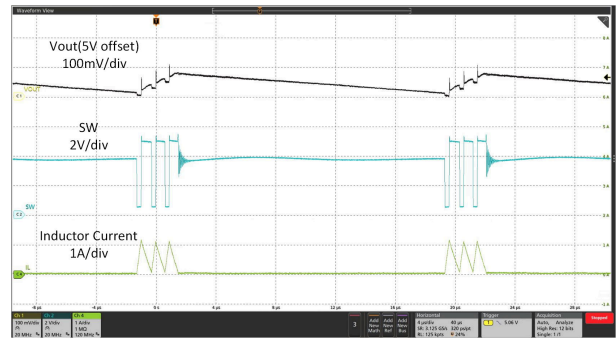

 $V_{IN} = 3.6\text{ V}, V_{OUT} = 5\text{ V}, I_{OUT} = 50\text{ mA}$

图 10-12. Switching Waveform at Light Load

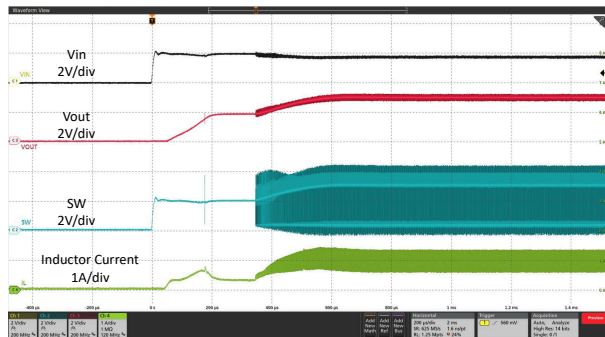

 $V_{IN} = 2.0\text{ V}, V_{OUT} = 3.3\text{ V}, 6.6\text{-}\Omega\text{ resistance load}$

图 10-13. Start-up Waveform

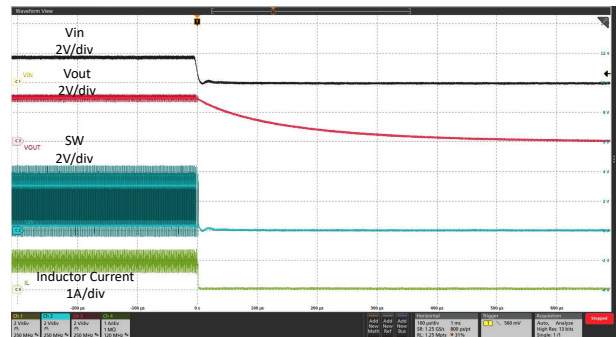

 $V_{IN} = 2.0\text{ V}, V_{OUT} = 3.3\text{ V}, 6.6\text{-}\Omega\text{ resistance load}$

图 10-14. Shutdown Waveform

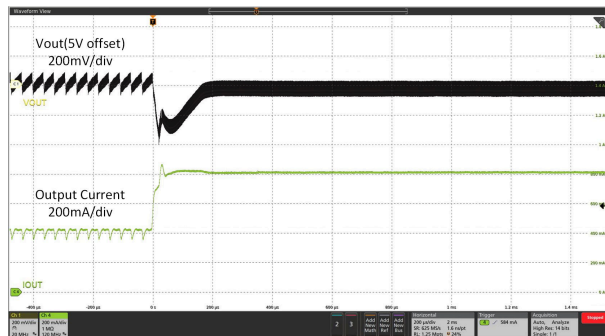

 $V_{IN} = 3.6\text{ V}, V_{OUT} = 5\text{ V}, I_{OUT} = 400\text{ mA to } 800\text{ mA with } 20\text{-}\mu\text{s}$
slew rate

图 10-15. Load Transient

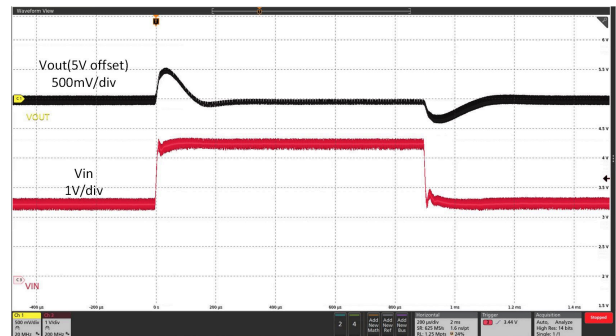
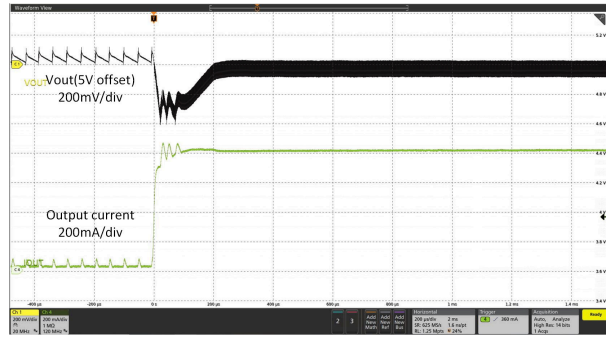
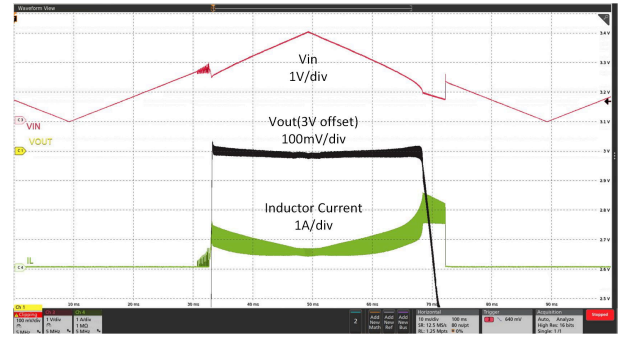

 $V_{IN} = 2.5\text{ V to } 4.6\text{ V with } 20\text{-}\mu\text{s slew rate}, V_{OUT} = 5\text{ V}$
 $I_{OUT} = 800\text{ mA}$

图 10-16. Line Transient



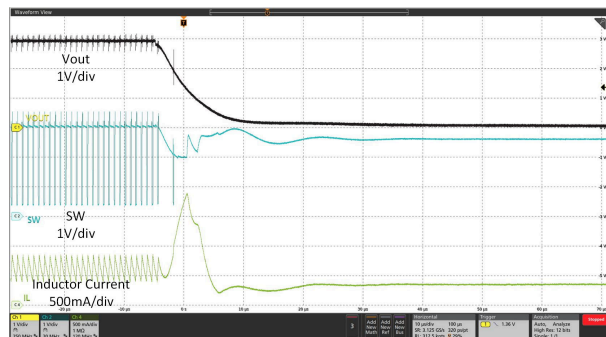
$V_{IN} = 3.6\text{ V}$, $V_{OUT} = 5\text{ V}$, $I_{OUT} = 0\text{ A to } 800\text{ mA Sweep}$

图 10-17. Load Sweep



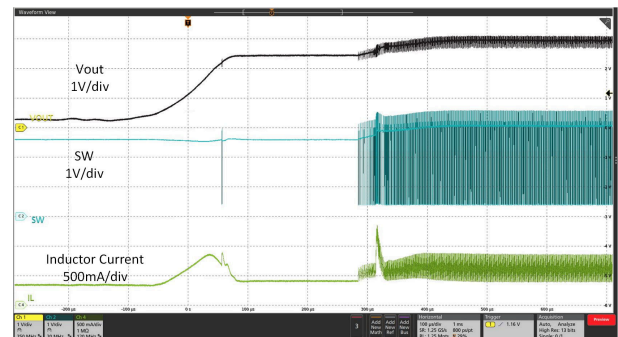
$V_{IN} = 0\text{ V to } 3\text{ V Sweep}$, $V_{OUT} = 3\text{ V}$, $6.6\text{-}\Omega$ resistance load

图 10-18. Line Sweep



$V_{IN} = 2.5\text{ V}$, $V_{OUT} = 3\text{ V}$, $6.6\text{-}\Omega$ resistance load

图 10-19. Output Short Protection (Entry)



$V_{IN} = 2.5\text{ V}$, $V_{OUT} = 3\text{ V}$, $6.6\text{-}\Omega$ resistance load

图 10-20. Output Short Protection (Recover)

10.3 Power Supply Recommendations

The device is designed to operate from an input voltage supply range from 0.5 V to 5.5 V, with minimum 1.8V start up input voltage. This input supply must be well regulated. If the input supply is located more than a few inches from the converter, additional bulk capacitance is required near to the ceramic bypass capacitors. A typical choice is a tantalum or aluminum electrolytic capacitor with a value of 100 μF .

The LP5813 can also work normally by powering from VOUT with 2.7 V to 5.5 V voltage range, to bypass the integrated boost converter. In direct drive mode or mix drive mode, an external LED supply with 2.7 V to 5.5 V voltage range is supported to power up the LEDs in direct drive configurations.

10.4 Layout

10.4.1 Layout Guidelines

As for all switching power supplies, especially those running at high switching frequency and high currents, layout is an important design step. If the layout is not carefully done, the regulator could suffer from instability and noise problems. To maximize efficiency, switch rise and fall time are very fast. To prevent radiation of high frequency noise (for example, EMI), proper layout of the high-frequency switching path is essential. Minimize the length and area of all traces connected to the SW pin, and always use a ground plane under the switching regulator to minimize interplane coupling. The input capacitor needs not only to be close to the VIN pin, but also to the GND pin in order to reduce input supply ripple. The most critical current path for all boost converters is from the switching FET, through the rectifier FET, then the output capacitors, and back to ground of the switching FET. This high current path contains nanosecond rise and fall time and must be kept as short as possible. Therefore, the output capacitor not only must be close to the VOUT pin, but also to the GND pin to reduce the overshoot at the SW pin and VOUT pin. For OUTx (x = 0, 1, 2, 3), low inductive and resistive path of switch load loop can help to provide a high slew rate. Therefore, path of adjacent outputs must be short and wide and avoid

parallel wiring and narrow trace. For better thermal performance, TI suggest to make copper polygon connected with each pin bigger.

10.4.2 Layout Example

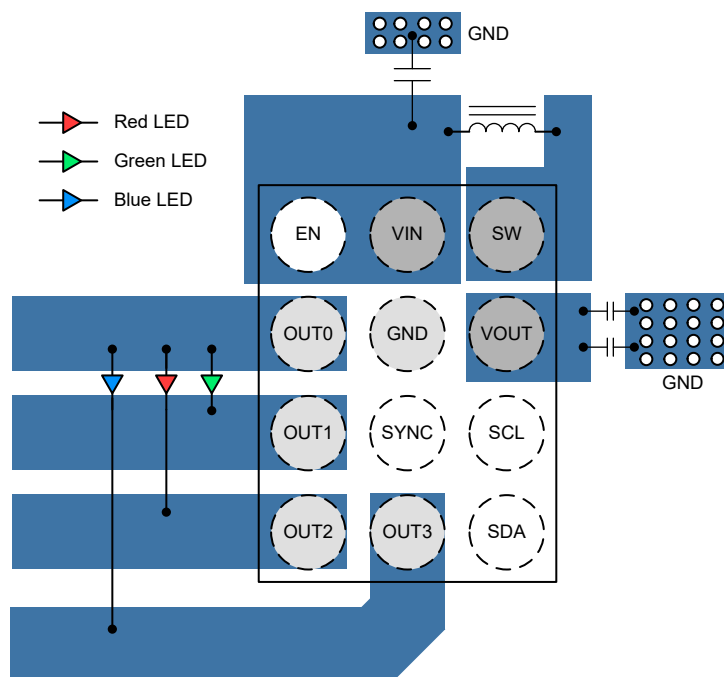


图 10-21. LP5813 DSBGA Package Layout Example

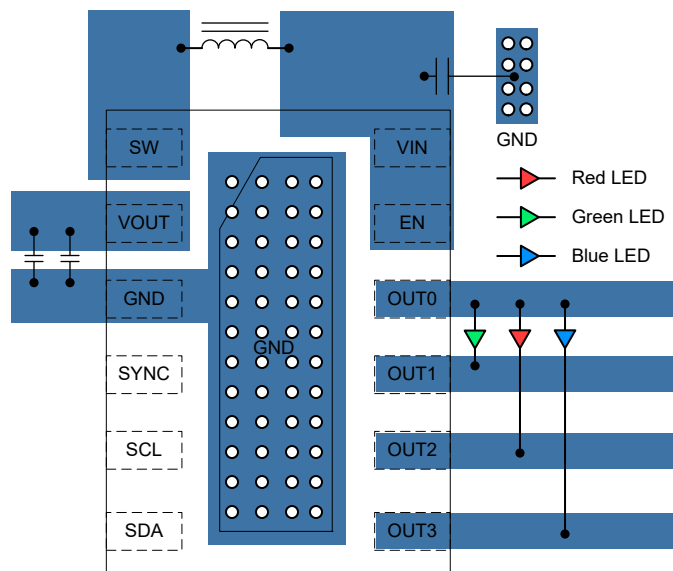


图 10-22. LP5813 WSON Package Layout Example

11 Device and Documentation Support

TI offers an extensive line of development tools. Tools and software to evaluate the performance of the device, generate code, and develop solutions are listed below.

11.1 Documentation Support

11.2 接收文档更新通知

要接收文档更新通知，请导航至 [ti.com](https://www.ti.com) 上的器件产品文件夹。点击 [订阅更新](#) 进行注册，即可每周接收产品信息更改摘要。有关更改的详细信息，请查看任何已修订文档中包含的修订历史记录。

11.3 支持资源

[TI E2E™ 支持论坛](#) 是工程师的重要参考资料，可直接从专家获得快速、经过验证的解答和设计帮助。搜索现有解答或提出自己的问题可获得所需的快速设计帮助。

链接的内容由各个贡献者“按原样”提供。这些内容并不构成 TI 技术规范，并且不一定反映 TI 的观点；请参阅 TI 的 [《使用条款》](#)。

11.4 Trademarks

TI E2E™ is a trademark of Texas Instruments.

所有商标均为其各自所有者的财产。

11.5 静电放电警告



静电放电 (ESD) 会损坏这个集成电路。德州仪器 (TI) 建议通过适当的预防措施处理所有集成电路。如果不遵守正确的处理和安装程序，可能会损坏集成电路。

ESD 的损坏小至导致微小的性能降级，大至整个器件故障。精密的集成电路可能更容易受到损坏，这是因为非常细微的参数更改都可能会导致器件与其发布的规格不相符。

11.6 术语表

[TI 术语表](#) 本术语表列出并解释了术语、首字母缩略词和定义。

12 Mechanical, Packaging, and Orderable Information

The following pages include mechanical, packaging, and orderable information. This information is the most current data available for the designated devices. This data is subject to change without notice and revision of this document. For browser-based versions of this data sheet, refer to the left-hand navigation.

PACKAGING INFORMATION

Orderable Device	Status (1)	Package Type	Package Drawing	Pins	Package Qty	Eco Plan (2)	Lead finish/ Ball material (6)	MSL Peak Temp (3)	Op Temp (°C)	Device Marking (4/5)	Samples
LP5813AYBHR	ACTIVE	DSBGA	YBH	12	3000	RoHS & Green	SNAGCU	Level-1-260C-UNLIM	-40 to 85	5813A	Samples
LP5813BDRRR	ACTIVE	WSON	DRR	12	3000	RoHS & Green	NIPDAU	Level-1-260C-UNLIM	-40 to 85	5813B	Samples
LP5813BYBHR	ACTIVE	DSBGA	YBH	12	3000	RoHS & Green	SNAGCU	Level-1-260C-UNLIM	-40 to 85	5813B	Samples
LP5813CDRRR	ACTIVE	WSON	DRR	12	3000	RoHS & Green	NIPDAU	Level-1-260C-UNLIM	-40 to 85	5813C	Samples
LP5813CYBHR	ACTIVE	DSBGA	YBH	12	3000	RoHS & Green	SNAGCU	Level-1-260C-UNLIM	-40 to 85	5813C	Samples
LP5813DDRRR	ACTIVE	WSON	DRR	12	3000	RoHS & Green	NIPDAU	Level-1-260C-UNLIM	-40 to 85	5813D	Samples
LP5813DYBHR	ACTIVE	DSBGA	YBH	12	3000	RoHS & Green	SNAGCU	Level-1-260C-UNLIM	-40 to 85	5813D	Samples

(1) The marketing status values are defined as follows:

ACTIVE: Product device recommended for new designs.

LIFEBUY: TI has announced that the device will be discontinued, and a lifetime-buy period is in effect.

NRND: Not recommended for new designs. Device is in production to support existing customers, but TI does not recommend using this part in a new design.

PREVIEW: Device has been announced but is not in production. Samples may or may not be available.

OBSOLETE: TI has discontinued the production of the device.

(2) **RoHS:** TI defines "RoHS" to mean semiconductor products that are compliant with the current EU RoHS requirements for all 10 RoHS substances, including the requirement that RoHS substance do not exceed 0.1% by weight in homogeneous materials. Where designed to be soldered at high temperatures, "RoHS" products are suitable for use in specified lead-free processes. TI may reference these types of products as "Pb-Free".

RoHS Exempt: TI defines "RoHS Exempt" to mean products that contain lead but are compliant with EU RoHS pursuant to a specific EU RoHS exemption.

Green: TI defines "Green" to mean the content of Chlorine (Cl) and Bromine (Br) based flame retardants meet JS709B low halogen requirements of <=1000ppm threshold. Antimony trioxide based flame retardants must also meet the <=1000ppm threshold requirement.

(3) MSL, Peak Temp. - The Moisture Sensitivity Level rating according to the JEDEC industry standard classifications, and peak solder temperature.

(4) There may be additional marking, which relates to the logo, the lot trace code information, or the environmental category on the device.

(5) Multiple Device Markings will be inside parentheses. Only one Device Marking contained in parentheses and separated by a "~" will appear on a device. If a line is indented then it is a continuation of the previous line and the two combined represent the entire Device Marking for that device.

⁽⁶⁾ Lead finish/Ball material - Orderable Devices may have multiple material finish options. Finish options are separated by a vertical ruled line. Lead finish/Ball material values may wrap to two lines if the finish value exceeds the maximum column width.

Important Information and Disclaimer: The information provided on this page represents TI's knowledge and belief as of the date that it is provided. TI bases its knowledge and belief on information provided by third parties, and makes no representation or warranty as to the accuracy of such information. Efforts are underway to better integrate information from third parties. TI has taken and continues to take reasonable steps to provide representative and accurate information but may not have conducted destructive testing or chemical analysis on incoming materials and chemicals. TI and TI suppliers consider certain information to be proprietary, and thus CAS numbers and other limited information may not be available for release.

In no event shall TI's liability arising out of such information exceed the total purchase price of the TI part(s) at issue in this document sold by TI to Customer on an annual basis.

GENERIC PACKAGE VIEW

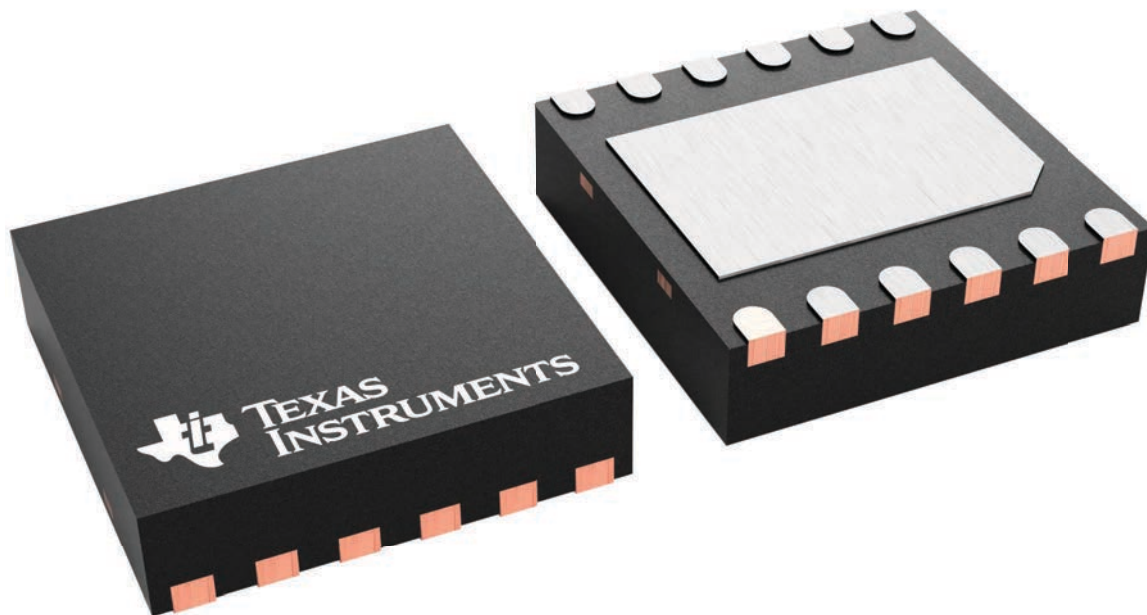
DRR 12

WSON - 0.8 mm max height

3 x 3, 0.5 mm pitch

PLASTIC SMALL OUTLINE - NO LEAD

This image is a representation of the package family, actual package may vary.
Refer to the product data sheet for package details.



4223490/B



PACKAGE OUTLINE

WSN - 0.8 mm max height

PLASTIC SMALL OUTLINE - NO LEAD

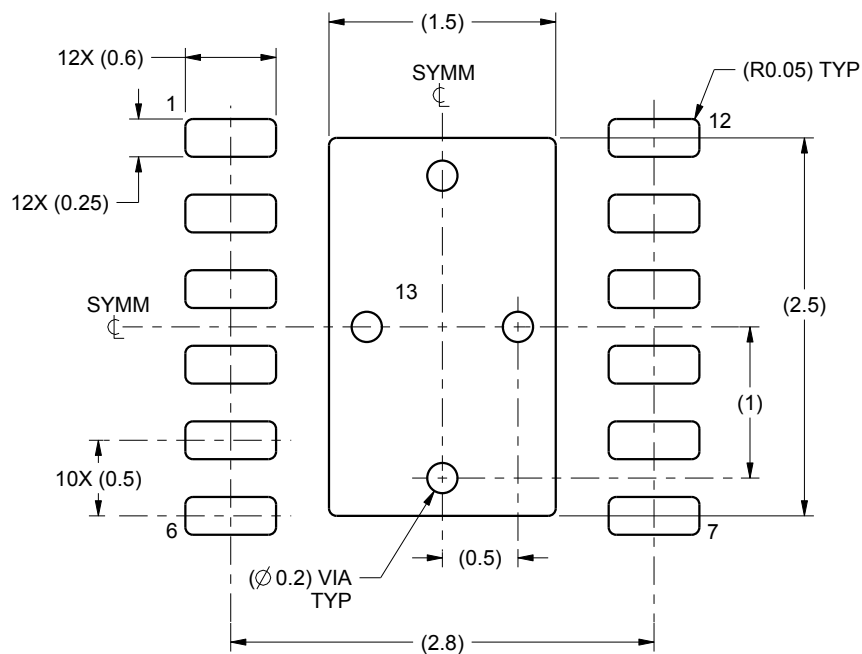


1. All linear dimensions are in millimeters. Any dimensions in parenthesis are for reference only. Dimensioning and tolerancing per ASME Y14.5M.
2. This drawing is subject to change without notice.
3. The package thermal pad must be soldered to the printed circuit board for thermal and mechanical performance.

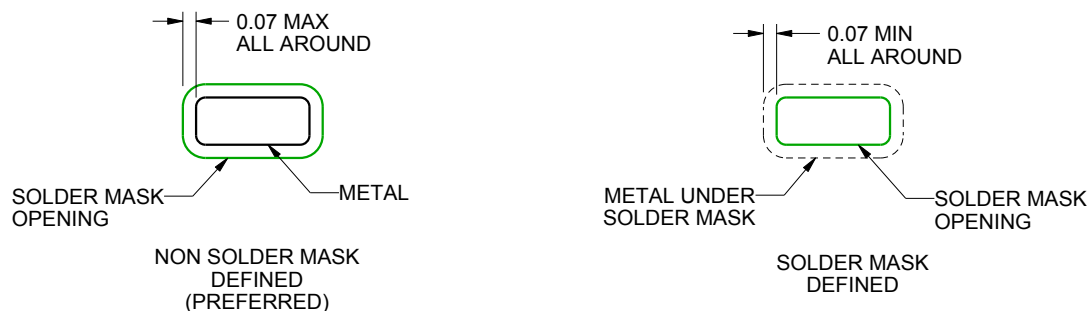
DRR0012C

WSON - 0.8 mm max height

PLASTIC SMALL OUTLINE - NO LEAD



LAND PATTERN EXAMPLE
SCALE:20X



SOLDER MASK DETAILS

4222932/A 05/2016

NOTES: (continued)

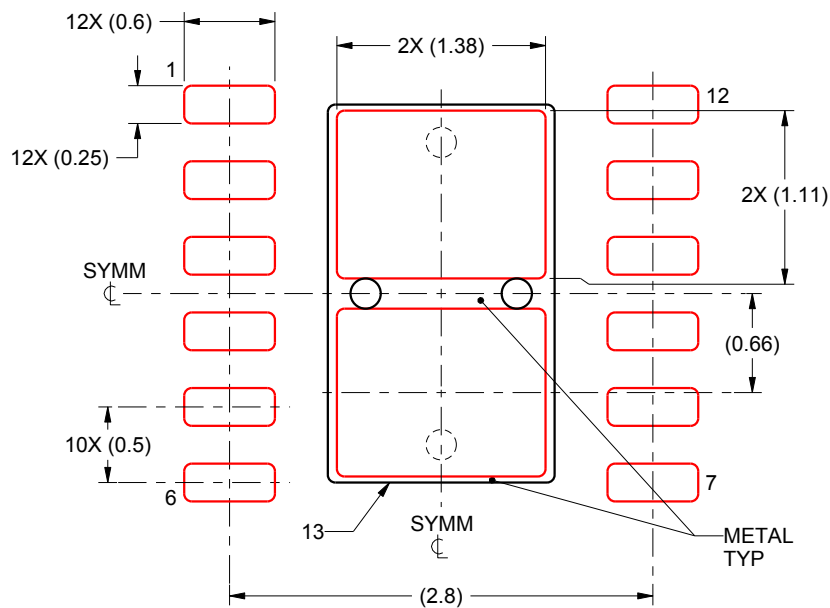
4. This package is designed to be soldered to a thermal pad on the board. For more information, see Texas Instruments literature number SLUA271 (www.ti.com/lit/slua271).
5. Vias are optional depending on application, refer to device data sheet. If any vias are implemented, refer to their locations shown on this view. It is recommended that vias under paste be filled, plugged or tented.

EXAMPLE STENCIL DESIGN

DRR0012C

WSN - 0.8 mm max height

PLASTIC SMALL OUTLINE - NO LEAD



SOLDER PASTE EXAMPLE BASED ON 0.125 mm THICK STENCIL

EXPOSED PAD 13
81.7% PRINTED SOLDER COVERAGE BY AREA
SCALE:20X

4222932/A 05/2016

NOTES: (continued)

6. Laser cutting apertures with trapezoidal walls and rounded corners may offer better paste release. IPC-7525 may have alternate design recommendations.

重要声明和免责声明

TI“按原样”提供技术和可靠性数据（包括数据表）、设计资源（包括参考设计）、应用或其他设计建议、网络工具、安全信息和其他资源，不保证没有瑕疵且不做任何明示或暗示的担保，包括但不限于对适销性、某特定用途方面的适用性或不侵犯任何第三方知识产权的暗示担保。

这些资源可供使用 TI 产品进行设计的熟练开发人员使用。您将自行承担以下全部责任：(1) 针对您的应用选择合适的 TI 产品，(2) 设计、验证并测试您的应用，(3) 确保您的应用满足相应标准以及任何其他功能安全、信息安全、监管或其他要求。

这些资源如有变更，恕不另行通知。TI 授权您仅可将这些资源用于研发本资源所述的 TI 产品的应用。严禁对这些资源进行其他复制或展示。您无权使用任何其他 TI 知识产权或任何第三方知识产权。您应全额赔偿因在这些资源的使用中对 TI 及其代表造成的任何索赔、损害、成本、损失和债务，TI 对此概不负责。

TI 提供的产品受 [TI 的销售条款](#) 或 [ti.com](#) 上其他适用条款/TI 产品随附的其他适用条款的约束。TI 提供这些资源并不会扩展或以其他方式更改 TI 针对 TI 产品发布的适用的担保或担保免责声明。

TI 反对并拒绝您可能提出的任何其他或不同的条款。

邮寄地址：Texas Instruments, Post Office Box 655303, Dallas, Texas 75265
Copyright © 2024，德州仪器 (TI) 公司