

**LM25005,LM25010**

????????????????????



Literature Number: ZHCA402

No. 111

Feature Article.....1-7

2.5A Buck Switching Regulator.....2

0.5A Buck Switching Regulator .....4

1A Buck Switching Regulator .....6

Power Design Tools.....8



## Buck Regulator Topologies for Wide Input/Output Voltage Differentials

— By Bob Bell, Applications Engineer and David Pace, Design Manager

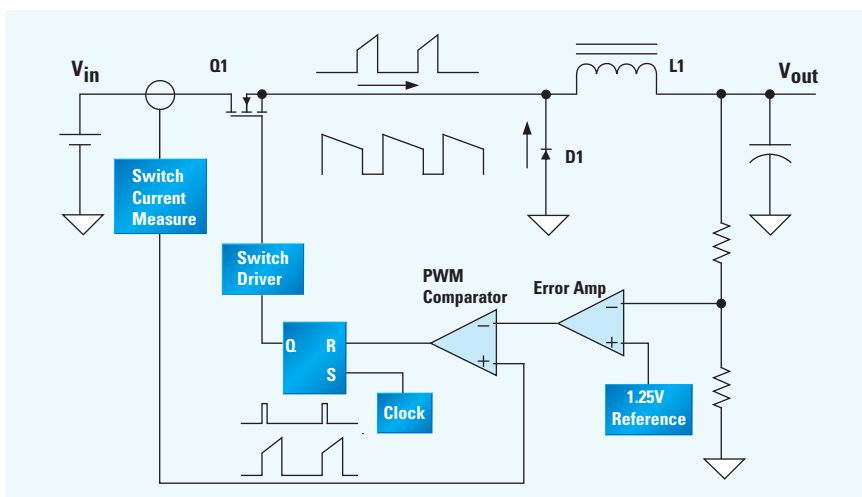


Figure 1. Buck Regulator Using Current-Mode Control

**B**uck regulators are used to efficiently step down a higher level, unregulated input voltage to a regulated output voltage. In applications requiring DC-DC conversion from a high input voltage, the buck regulator dramatically improves conversion efficiency relative to linear regulator alternatives. However, applying the buck regulator to applications with high input-to-output step-down ratios creates significant challenges for the pulse-width modulation (PWM) controller. Because the duty cycle of the buck regulator switch is approximately equal to  $V_{OUT}/V_{IN}$ , a buck DC-DC converter with high input/output voltage ratio must control very narrow PWM pulses. The switching frequency of a buck regulator is generally set to a high level to reduce the size of the inductor and capacitors. High switching frequency and low duty cycle translates to very short pulse durations in the controller. For example, a buck regulator with an input voltage of 66V and an output voltage of 3.3V will require a buck switch duty cycle of approximately 5%. At a typical switching frequency of 300 kHz, the required PWM on-time of the buck switch is a mere 166 ns.

Control methods or topologies used in buck regulators include Voltage-

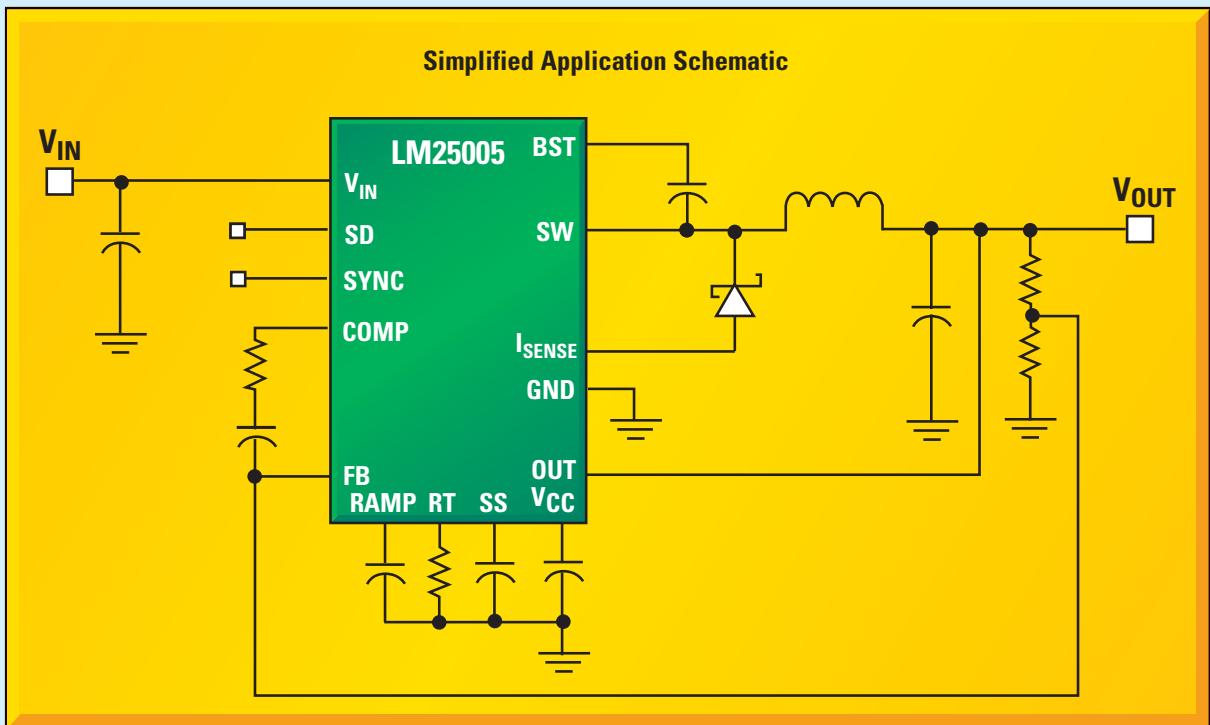
**NEXT ISSUE:**

**Trade-offs in Synchronous Design**

 **National  
Semiconductor**

# Integrated 42V, 2.5A Buck Switching Regulator

National's LM25005 With Emulated Current-Mode Control Reduces Noise Sensitivity and Enables Reliable Control of Small Duty Cycles at High Input Voltages



## LM25005 Features

- Ultra-wide  $V_{IN}$  from 7V to 42V, supports load currents up to 2.5A
- Adjustable output voltage from 1.225V
- 1.5% feedback reference accuracy
- Current mode control with emulated inductor current ramp
- Programmable switching frequency with bi-directional synchronization capability simplifies system design
- Simulation support available
- Available in TSSOP-20EP (Exposed Pad) packaging

AVAILABLE  
LEAD-FREE

Ideal for use in consumer electronics, telecommunications, data communications systems, automotive power systems, and distributed power applications

## Product Highlight:

Allows multiple devices to self-synchronize or synchronize to an external clock

**LM5005 High voltage version allows 75V max input voltage**

For FREE samples, datasheets, and more information, visit [www.national.com/pf/LM/LM25005.html](http://www.national.com/pf/LM/LM25005.html)

## Buck Regulator Topologies for Wide Input/Output Voltage Differentials

Mode (VM), Current-Mode (CM), Hysteretic, and Constant-On-Time (COT) control. Current-mode control provides ease of loop compensation, FET switch protection, and inherent line feed-forward compensation. This makes current-mode control a favorite among power designers.

Hysteretic and Constant-on-Time controllers respond more quickly to load transients but do not operate at constant switching frequency. Constant-on-Time, a variant of hysteretic control, provides improved stability and less variation in switching frequency.

### Current-Mode Control

Buck regulator ICs intended for high input/output step-down ratios must provide robust noise immunity when operating with very narrow duty cycles. In a current-mode topology, the challenge is the measurement and scaling of the inductor current.

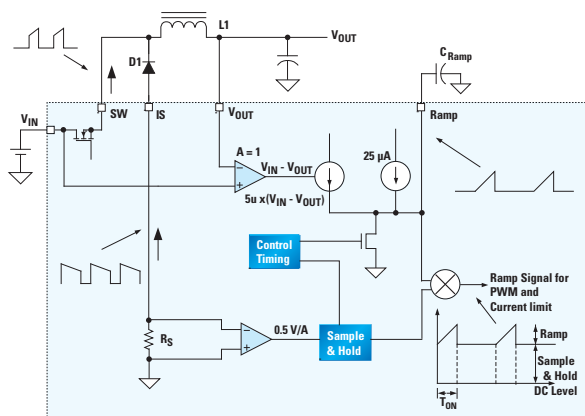
*Figure 1* shows the block diagram of a current-mode buck regulator. The output voltage is monitored and compared to a reference, with the error signal applied to the PWM comparator. The modulating ramp is a signal proportional to the buck switch current. When the buck switch is turned on, the inductor current flows through it with a slope of  $(V_{IN} - V_{OUT}) / L$ . An accurate, fast measurement of the buck-switch current is necessary to create the PWM ramp signal.

Propagation delays and switching transients makes it difficult to use current-mode control for large conversion ratio applications where very small on-times are required. Even with the best design practices, current sense and level shift circuits will add significant propagation delay. In addition, when the buck switch turns on, the reverse recovery current into the free-wheeling diode (D1) causes a leading-edge current spike with an extended ringing period (See *Figure 2*.) This spike can cause the PWM comparator to trip prematurely. Attempts to filter or blank this leading-edge spike reduces the minimum controllable on-time of the buck switch.

### Emulated Current-Mode Control

The challenge of accurate and fast current measurement can be met with a new proprietary method that emulates the buck switch current without actually measuring the current. The buck-switch current waveform can be broken down into two parts—a base, or pedestal, and a ramp. The pedestal represents the minimum (or valley) inductor current level. The inductor current falls to its minimum just before the buck switch turns on. A sample-and-hold measurement of the free-wheeling diode current, taken just prior to the turn-on of the buck switch, can capture the pedestal current information.

The other part of the buck-switch current waveform is the positive ramp to the peak level. The ramping current slope is described by,  $di/dt = (V_{IN} - V_{OUT}) / L$ . A signal equivalent to the current ramp can be created with a current source proportional to  $V_{IN} - V_{OUT}$  and a capacitor ( $C_{RAMP}$ ). If the current source ( $I_{RAMP}$ ) is controlled by the difference between the input and output voltages, the capacitor charging slope is:  $dv/dt = K * (V_{IN} - V_{OUT}) / C_{RAMP}$ , where K is a constant scale factor for the current source. The value of  $C_{RAMP}$  can be selected to set the capacitor voltage slope proportional to the inductor current slope.

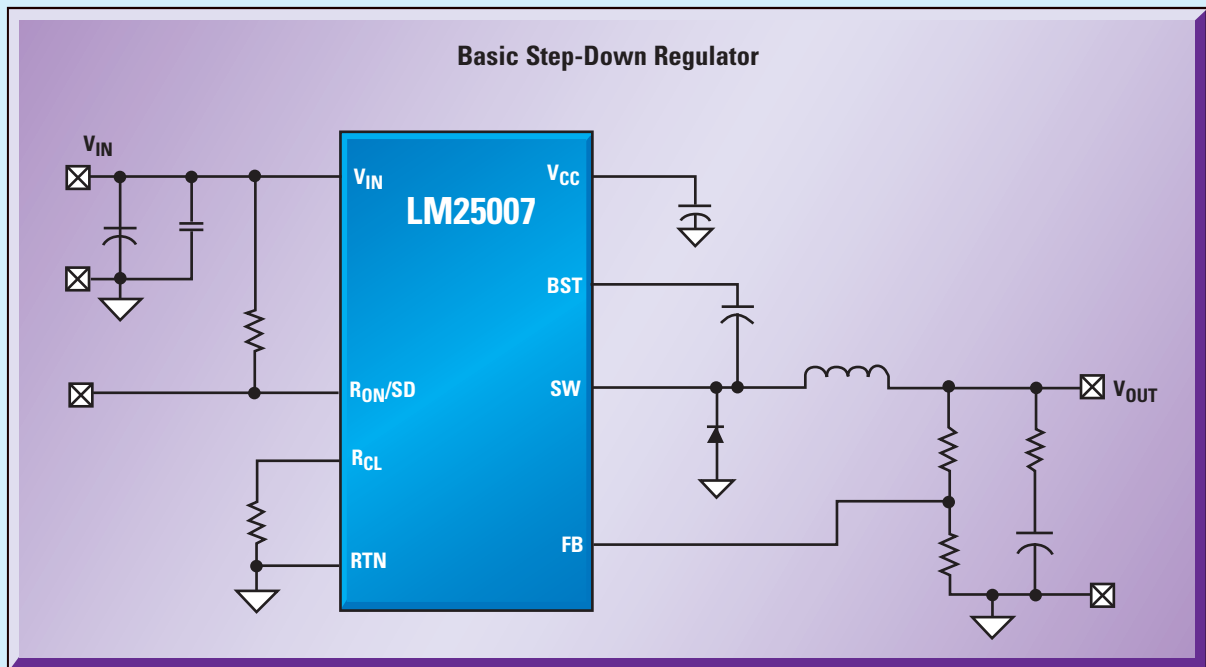


**Figure 2. Emulated Current-Mode Regulator**

*Figure 2* presents the block diagram of the LM25005, an integrated buck regulator that implements the emulated current-mode control scheme described above. The free-wheeling diode anode is connected to ground through the

# Highly Integrated 42V, 0.5A Buck Switching Regulator

LM25007 Has Constant-On-Time Architecture with  $V_{IN}$  Feed-Forward, Provides Ultra-Fast Transient Response, and Needs No External Compensation



## LM25007 Features

- Wide  $V_{IN}$  from 9V to 42V, supports load currents up to 0.5A
- Ultra-fast transient response, reduced filter capacitance
- Up to 800 kHz switching frequency
- Precise DC current limit
- $\pm 2\%$  accurate, 2.5V feedback from  $-40^\circ$  to  $125^\circ\text{C}$
- Integrated high voltage bias regulator
- Available in thermally enhanced MSOP-8 and LLP packaging

AVAILABLE  
LEAD-FREE

Ideal for use in automotive electronics, telematics, Industrial systems, consumer electronics, distributed power supplies, high-voltage post regulators, industrial power supplies, and high-efficiency point-of-load (POL) regulators

## Product Highlight:

$V_{IN}$  feed-forward provides near constant operating frequency

LM25007 High  
input voltage  
version allows  
75V max input  
voltage

For FREE samples, datasheets, and more information, visit [www.national.com/pf/LM/LM25007.html](http://www.national.com/pf/LM/LM25007.html)

## Buck Regulator Topologies for Wide Input/Output Voltage Differentials

controller. A small-value, current-sense resistor and amplifier are used to measure the diode current. A sample-and-hold circuit captures the minimum level diode current just prior to the turn-on of the buck switch. Sampling the valley current, each cycle provides the pedestal portion of the emulated current sense signal.

The LM25005 senses the input voltage and the output voltage to generate a current source that charges an external ramp capacitor ( $C_{RAMP}$ ). When the buck switch is turned on, the capacitor voltage rises linearly during each cycle. When the buck switch is turned off, the capacitor is discharged. For proper operation, the ramp capacitor is chosen in proportion to the value of the buck inductor. The LM25005 sums the sampled current pedestal and the external ramp capacitor voltage and applies this signal to the PWM comparator. The final result is a controller that behaves like a peak current-mode controller but without the delay and transient effects in the current sensing signal.

For applications operating with duty cycles greater than 50 percent, peak current-mode controllers are subject to sub-harmonic oscillation. Oscillation is normally avoided by adding an additional fixed slope ramp to the current-sense signal (slope compensation). In the LM25005, an additional fixed offset current provides an additional fixed slope to the ramp capacitor signal. For very high duty cycle applications, the ramp capacitor value can be decreased to further increase the ramp slope and prevent sub-harmonic oscillation.

LM25005 output overload protection is accomplished with a dedicated current-limit comparator which limits the emulated peak current on a cycle-by-cycle basis. The emulated current-mode method

provides the added benefit of capturing inductor current information prior to the buck switch turn-on. If the current pedestal exceeds the current-limit comparator threshold due to an extreme overload condition, the buck switch skips cycles to prevent current runaway.

Figure 3 shows an LM25005 controlled buck regulator designed for an input voltage range of 7V to 42V and an output voltage of 5V with a maximum load of 2.5A.

### Constant-On-Time Control

Another solution involving high input/output ratio buck regulators is Constant-On-Time control. This method can be thought of as a gated one-shot, where a feedback comparator triggers the next buck switch on-time when the output voltage falls below a threshold level. COT control is well suited for applications with high input/output voltage ratios because the one-shot can be programmed for a very short on-time and the feedback comparator will adjust the off-time to achieve the necessary low duty cycle. The noise sensitivity of a PWM ramp operating at low levels are completely eliminated. The COT technique has been used for many years for simple, cost-effective DC-DC converters because it requires no error amplifier or loop compensation components. The central issue of this method is frequency variation with input voltage and the possibility of sub-harmonic oscillation.

The block diagram in Figure 4 illustrates the LM25010, a new member of a generation of COT buck regulators that solves these problems. The one-shot which controls the on-time is programmed by resistor  $R_{ON}$  which is connected between the unregulated input voltage and the controller. The period of the one-shot ( $T_{ON}$ ) thus varies inversely with the input voltage. Using the simplified equation for the duty cycle (D) of a buck regulator, with  $F_s$  representing switching frequency:

$$D = V_{OUT}/V_{IN}$$

But by definition,  $D = T_{ON}/(T_{ON}+T_{OFF}) = T_{ON} * F_s$

Since,  $T_{ON} = K/V_{IN}$

Therefore,  $F_s = V_{OUT}/K$

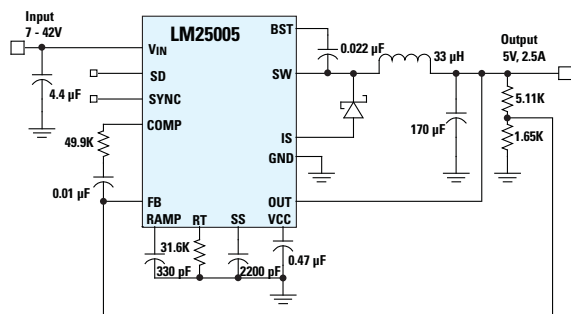
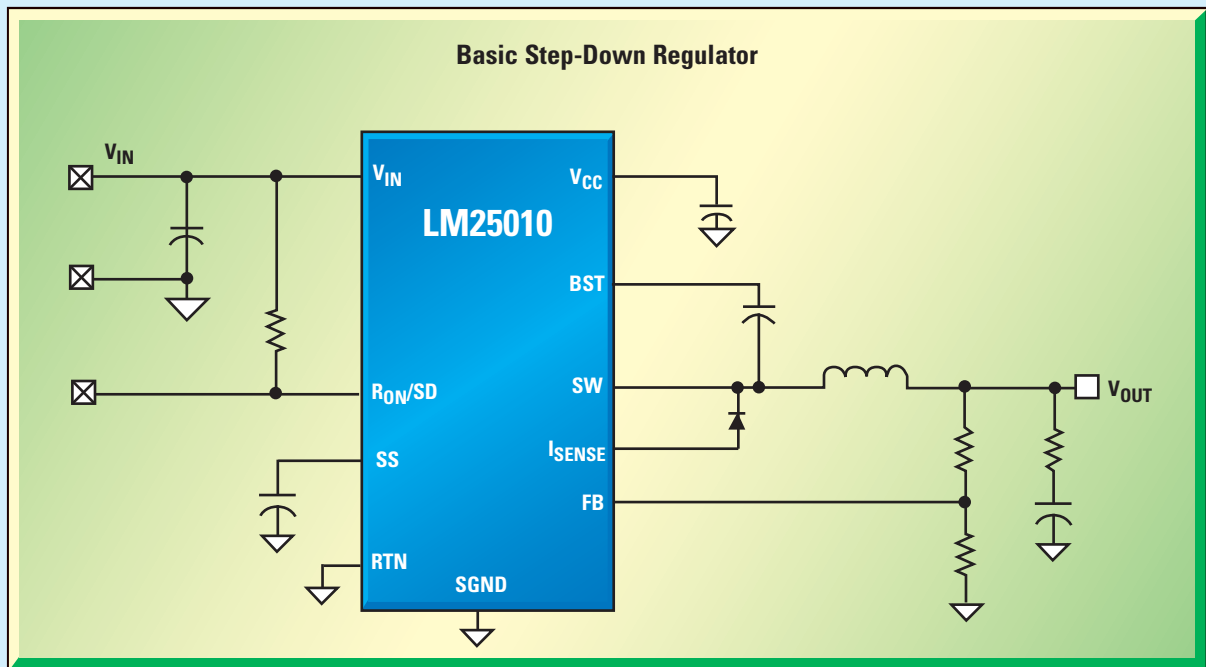


Figure 3. LM25005 Buck Regulator Schematic

# Highly Integrated 42V, 1.0A Buck Switching Regulator

LM25010 With Constant-On-Time Architecture and  $V_{IN}$  Feed-Forward Provides Ultra-Fast Transient Response and Near-Constant Operating Frequency



## LM25010 Features

- Wide  $V_{IN}$  from 6V to 42V, supports load currents up to 1.0A
- Ultra-fast feed-forward response, modulated filter capacitance
- Switching frequency up to 1 MHz
- Valley current limiting at 1.25A
- $\pm 2\%$  accurate, 2.5V feedback from  $-40^{\circ}\text{C}$  to  $125^{\circ}\text{C}$
- Integrated high voltage bias regulator
- Available in exposed pad LLP-10 and TSSOP-14 packaging

AVAILABLE  
LEAD-FREE

Ideal for use in non-isolated telecommunications, secondary-side post regulators, and automotive electronics

## Product Highlight

No control-loop compensation required

LM5010 High  
input voltage  
version allows  
75V max input  
voltage

For FREE samples, datasheets, and more information, visit [www.national.com/pf/LM/LM25010.html](http://www.national.com/pf/LM/LM25010.html)



## Buck Regulator Topologies for Wide Input/Output Voltage Differentials

Thus in any application where the desired  $V_{OUT}$  is a fixed value, the on-time can be programmed to achieve a desired switching frequency and the frequency will not vary significantly with changes in the input voltage.

One challenge associated with COT regulators is current limiting. If the on-time is terminated by a current-limit circuit which senses the current in the buck switch, the output voltage will fall and the off-time will decrease to its minimum value in an attempt to maintain voltage regulation. The frequency of the regulator will increase to an extremely high value, limited only by the propagation delays, and power dissipation within the IC will become excessive. Some buck regulator solutions arbitrarily enforce a minimum off-time after current limit is detected to guarantee that the frequency does not increase excessively in overload conditions. This approach produces a fold-back in the current limit  $I$  vs  $V$  characteristic which can limit the useful load range of the regulator.

The LM25010 illustrated in *Figure 4* solves the current limit dilemma with a simple yet effective method. The free-wheeling diode current is routed through a sense resistor in the IC. The current in the diode is sensed by a resistor and monitored by a comparator. If the current flowing through the free-wheeling diode exceeds the current-limit threshold, the current-limit comparator will disable the buck switch until the diode current falls to an acceptable level. The off-time is automatically increased to the

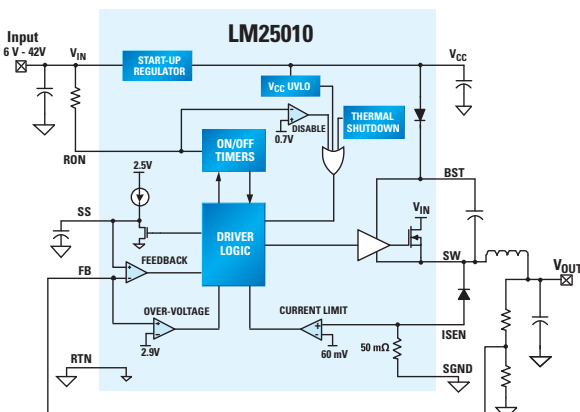


Figure 4. LM25010 COT Buck Regulator

time required for the buck inductor current to ramp down to the desired valley current. Thus, neither the output current nor the switching frequency can run away during overload.

Regulators based on COT control are subject to erratic switching behavior if there is not sufficient ripple voltage present at the Feedback (FB) pin. If the output capacitor has a large enough Equivalent Series Resistance (ESR) this issue can be avoided. In applications where a relatively large output ripple cannot be tolerated, several ripple reduction techniques are available.

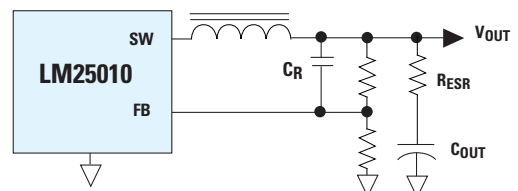


Figure 5a. COT Ripple Reduction Using  $C_R$

In *Figure 5a*, the ripple at  $V_{OUT}$  is fed to FB through  $C_R$ . Therefore the ripple at  $V_{OUT}$  can be less than in the standard circuit since it is not attenuated as much by the feedback resistors.

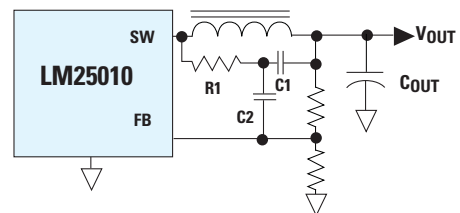


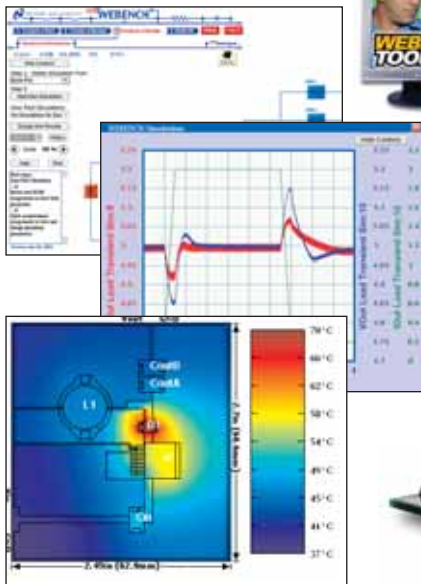
Figure 5b. COT Ripple Reduction Using  $R_1, C_1,$  and  $C_2$

In *Figure 5b*, the  $R_{ESR}$  is removed resulting in low ripple at  $V_{OUT}$ . The ripple required at FB is produced by  $R_1, C_1,$  and  $C_2$ . Since  $V_{OUT}$  is an AC ground, and the SW pin switches between  $V_{IN}$  and ground, a sawtooth is generated at the  $R_1, C_1$  junction.  $C_2$  then couples that ripple to FB.

These are some of the control methods and topologies favored by power designers. For more information on high-voltage switching power supply topologies, visit [www.national.com/onlineseminars](http://www.national.com/onlineseminars). ■



# Power Design Tools



## WEBENCH® Online Design Environment

Our design and prototyping environment simplifies and expedites the entire design process.

1. Choose a part
2. Create a design
3. Analyze a power supply design
  - Perform electrical simulation
  - Simulate thermal behavior
4. Build it
  - Receive your custom prototype kit 24 hours later

[webench.national.com](http://webench.national.com)



## Analog University®

Expand your knowledge and understanding of analog with our free online educational training tool.

[analogU.national.com](http://analogU.national.com)

**Don't miss a single issue!**

### National Semiconductor

2900 Semiconductor Drive  
PO Box 58090  
Santa Clara, CA 95052  
1 800 272 9959

Visit our website at:  
[power.national.com](http://power.national.com)

For more information,  
send email to:  
[new.feedback@nsc.com](mailto:new.feedback@nsc.com)

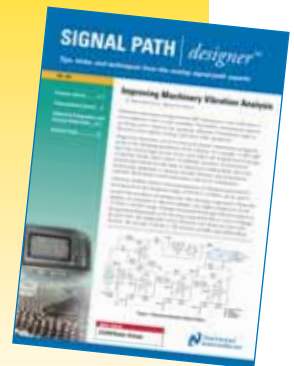


Subscribe now to receive email alerts when new issues of Power Designer are available:

[power.national.com/designer](http://power.national.com/designer)

Read our Signal Path Designer<sup>SM</sup> online today at:

[signalpath.national.com/designer](http://signalpath.national.com/designer)



## 重要声明

德州仪器(TI) 及其下属子公司有权在不事先通知的情况下, 随时对所提供的产品和服务进行更正、修改、增强、改进或其它更改, 并有权随时中止提供任何产品和服务。客户在下订单前应获取最新的相关信息, 并验证这些信息是否完整且是最新的。所有产品的销售都遵循在订单确认时所提供的TI 销售条款与条件。

TI 保证其所销售的硬件产品的性能符合TI 标准保修的适用规范。仅在TI 保证的范围内, 且TI 认为有必要时才会使用测试或其它质量控制技术。除非政府做出了硬性规定, 否则没有必要对每种产品的所有参数进行测试。

TI 对应用帮助或客户产品设计不承担任何义务。客户应对其使用TI 组件的产品和应用自行负责。为尽量减小与客户产品和应用相关的风险, 客户应提供充分的设计与操作安全措施。

TI 不对任何TI 专利权、版权、屏蔽作品权或其它与使用了TI 产品或服务的组合设备、机器、流程相关的TI 知识产权中授予的直接或隐含权限作出任何保证或解释。TI 所发布的与第三方产品或服务有关的信息, 不能构成从TI 获得使用这些产品或服务的许可、授权、或认可。使用此类信息可能需要获得第三方的专利权或其它知识产权方面的许可, 或是TI 的专利权或其它知识产权方面的许可。

对于TI 的产品手册或数据表, 仅在没有对内容进行任何篡改且带有相关授权、条件、限制和声明的情况下才允许进行复制。在复制信息的过程中对内容的篡改属于非法的、欺诈性商业行为。TI 对此类篡改过的文件不承担任何责任。

在转售TI 产品或服务时, 如果存在对产品或服务参数的虚假陈述, 则会失去相关TI 产品或服务的明示或暗示授权, 且这是非法的、欺诈性商业行为。TI 对此类虚假陈述不承担任何责任。

TI 产品未获得用于关键的安全应用中的授权, 例如生命支持应用(在该类应用中一旦TI 产品故障将预计造成重大的人员伤亡), 除非各方官员已经达成了专门管控此类使用的协议。购买者的购买行为即表示, 他们具备有关其应用安全以及规章衍生所需的所有专业技术和知识, 并且认可和同意, 尽管任何应用相关信息或支持仍可能由TI 提供, 但他们将独力负责满足在关键安全应用中使用其产品及TI 产品所需的所有法律、法规和安全相关要求。此外, 购买者必须全额赔偿因在此类关键安全应用中使用TI 产品而对TI 及其代表造成的损失。

TI 产品并非设计或专门用于军事/航空应用, 以及环境方面的产品, 除非TI 特别注明该产品属于“军用”或“增强型塑料”产品。只有TI 指定的军用产品才满足军用规格。购买者认可并同意, 对TI 未指定军用的产品进行军事方面的应用, 风险由购买者单独承担, 并且独力负责在此类相关使用中满足所有法律和法规要求。

TI 产品并非设计或专门用于汽车应用以及环境方面的产品, 除非TI 特别注明该产品符合ISO/TS 16949 要求。购买者认可并同意, 如果他们在汽车应用中使用任何未被指定的产品, TI 对未能满足应用所需要求不承担任何责任。

可访问以下URL 地址以获取有关其它TI 产品和应用解决方案的信息:

	产品		应用
数字音频	<a href="http://www.ti.com.cn/audio">www.ti.com.cn/audio</a>	通信与电信	<a href="http://www.ti.com.cn/telecom">www.ti.com.cn/telecom</a>
放大器和线性器件	<a href="http://www.ti.com.cn/amplifiers">www.ti.com.cn/amplifiers</a>	计算机及周边	<a href="http://www.ti.com.cn/computer">www.ti.com.cn/computer</a>
数据转换器	<a href="http://www.ti.com.cn/dataconverters">www.ti.com.cn/dataconverters</a>	消费电子	<a href="http://www.ti.com/consumer-apps">www.ti.com/consumer-apps</a>
DLP® 产品	<a href="http://www.dlp.com">www.dlp.com</a>	能源	<a href="http://www.ti.com/energy">www.ti.com/energy</a>
DSP - 数字信号处理器	<a href="http://www.ti.com.cn/dsp">www.ti.com.cn/dsp</a>	工业应用	<a href="http://www.ti.com.cn/industrial">www.ti.com.cn/industrial</a>
时钟和计时器	<a href="http://www.ti.com.cn/clockandtimers">www.ti.com.cn/clockandtimers</a>	医疗电子	<a href="http://www.ti.com.cn/medical">www.ti.com.cn/medical</a>
接口	<a href="http://www.ti.com.cn/interface">www.ti.com.cn/interface</a>	安防应用	<a href="http://www.ti.com.cn/security">www.ti.com.cn/security</a>
逻辑	<a href="http://www.ti.com.cn/logic">www.ti.com.cn/logic</a>	汽车电子	<a href="http://www.ti.com.cn/automotive">www.ti.com.cn/automotive</a>
电源管理	<a href="http://www.ti.com.cn/power">www.ti.com.cn/power</a>	视频和影像	<a href="http://www.ti.com.cn/video">www.ti.com.cn/video</a>
微控制器 (MCU)	<a href="http://www.ti.com.cn/microcontrollers">www.ti.com.cn/microcontrollers</a>		
RFID 系统	<a href="http://www.ti.com.cn/rfidsys">www.ti.com.cn/rfidsys</a>		
OMAP 机动性处理器	<a href="http://www.ti.com/omap">www.ti.com/omap</a>		
无线连通性	<a href="http://www.ti.com.cn/wirelessconnectivity">www.ti.com.cn/wirelessconnectivity</a>		
	德州仪器在线技术支持社区		<a href="http://www.deyisupport.com">www.deyisupport.com</a>

邮寄地址: 上海市浦东新区世纪大道 1568 号, 中建大厦 32 楼 邮政编码: 200122  
Copyright © 2011 德州仪器 半导体技术 (上海) 有限公司