

LRA Actuators: How to Move Them?

Mandy Barsilai

Haptic Products

ABSTRACT

This document describes from a high-level perspective the theory of operation for driving LRA actuators and compares typical open-loop and closed-loop solutions.

Contents

1	Background	1
2	Moving an LRA.....	2
3	Driving an LRA in Open-Loop	2
4	Driving an LRA in Closed-Loop	4

List of Figures

1	Typical LRA Acceleration Versus Frequency Response	2
2	Acceleration at Resonance	2
3	Acceleration Off-Resonance	2
4	Pulsing Waveform in Open-Loop With Brake Problems	3
5	Pulsing Waveform in Closed-Loop	3
6	Double Click Waveform in Open-Loop With Brake Problems	3
7	Double Click Waveform in Closed-Loop	3
8	Buzz Waveform in Open-Loop With Over-Overdrive Problems	4
9	Buzz Waveform in Closed-Loop	4
10	Closed-Loop Driving Signal With BEMF Feedback Signal	4
11	Closed-Loop Driving Signal With BEMF Feedback Signal and Re-Synchronisation Feature	5

1 Background

Linear resonant actuators (LRAs) are resonant systems that will produce vibration when exercised at or near its resonance frequency. All else being equal, an LRA will maximize the vibration strength when driven at its resonance frequency (see [Figure 1](#)). However, the resonance frequency may vary due to different factors, such as temperature, aging, the mass of the product to which the LRA is mounted, and in the case of a portable product, the manner in which the product is held. LRAs tend to have high-Q frequency response. Therefore, driving them with small offsets from the resonance frequency (typically 3 - 5 Hz) may result in a significant drop in vibration strength. [Figure 2](#) and [Figure 3](#) show an example that compares acceleration at resonance versus 4 Hz away.

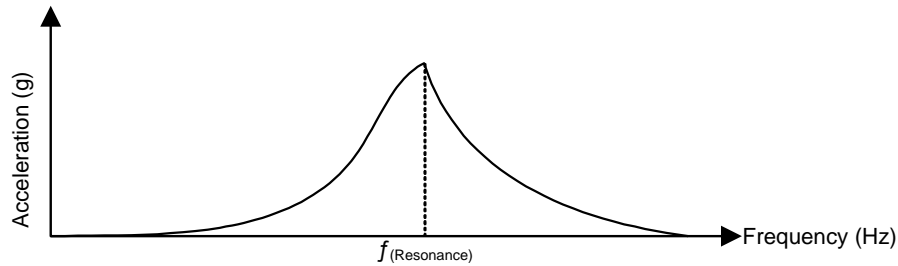


Figure 1. Typical LRA Acceleration Versus Frequency Response

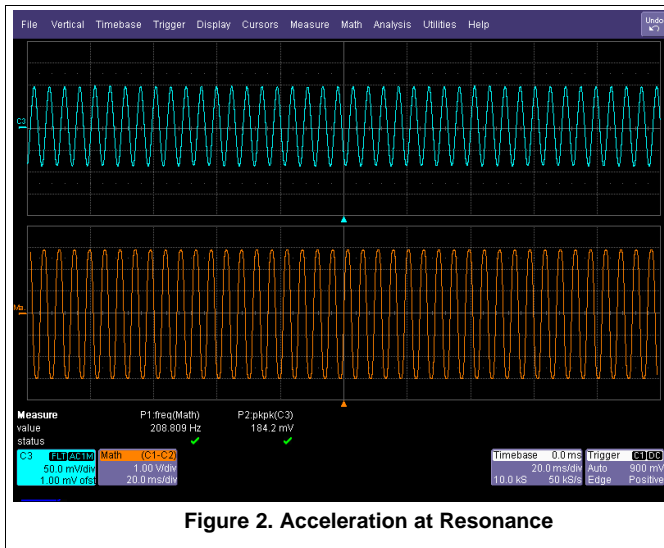


Figure 2. Acceleration at Resonance

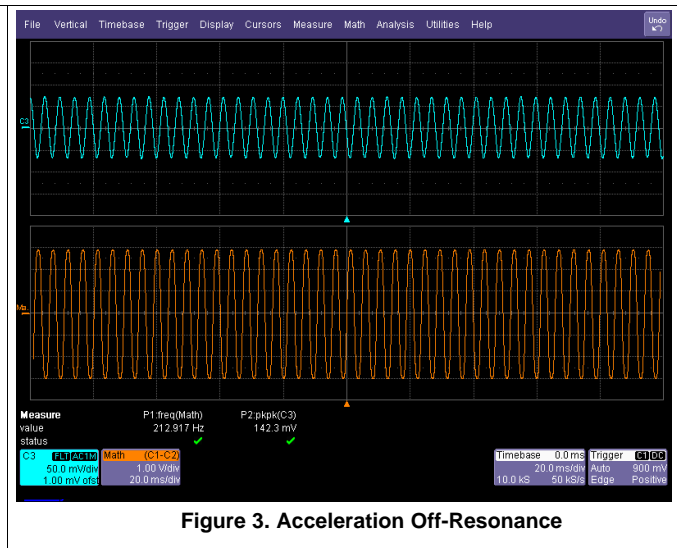


Figure 3. Acceleration Off-Resonance

2 Moving an LRA

In the simplest of terms, moving an LRA consists of:

- Injecting enough energy at or near the LRA's resonance frequency to overcome the static friction to get the mass moving
- Injecting the appropriate level of energy at or near the LRA's resonance frequency that results in the desired vibration level
- Injecting appropriate levels of energy at or near the LRA's resonance frequency with 180° phase shift in order to "brake" the actuator

Additionally, the actuator can be overdriven for a short period of time during the start or brake section of the waveform to reduce the time it takes to go from a rest position to the desired steady state and vice versa. Reducing the start-time and brake-time results in sharper, crisper effects. Refer to the data sheet of the actuator for safe and reliable overdrive voltage and duration.

3 Driving an LRA in Open-Loop

If the resonance frequency of an LRA is known, all that is needed to get it moving is to drive it at that frequency and with an amplitude high enough to overcome its static friction. Actuator manufacturers usually provide the typical resonance frequency of its actuators so this can be used as the starting point. The resonance frequency of a particular LRA model will usually have small part-to-part variations due to process and manufacturing variability; the more the part-to-part variations, the lower the part-to-part consistency of the vibration strength.

If braking is desired, the LRA can be driven at or near its resonance frequency with 180° phase shift in order to stop it. Careful manual tuning needs to be performed for each actuator and each amplitude level such that the LRA brakes optimally. If the braking signal is not strong enough or for long enough time, the LRA will under-brake, which translates to longer brake times. If the braking signal is too strong or for too long, the LRA will over-brake, which translates to the LRA moving in the opposite direction.

Figure 5 and Figure 7 show the advantages of having clean, sharp braking in a system. Figure 4 and Figure 6 show the effect of poor braking in the acceleration waveform.

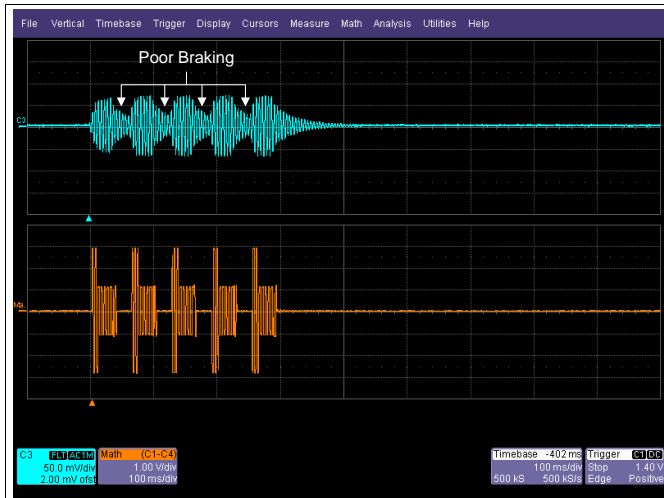


Figure 4. Pulsing Waveform in Open-Loop With Brake Problems



Figure 5. Pulsing Waveform in Closed-Loop

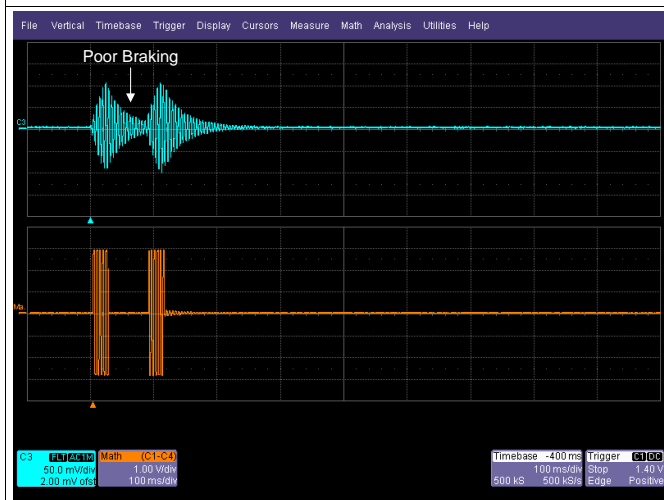


Figure 6. Double Click Waveform in Open-Loop With Brake Problems

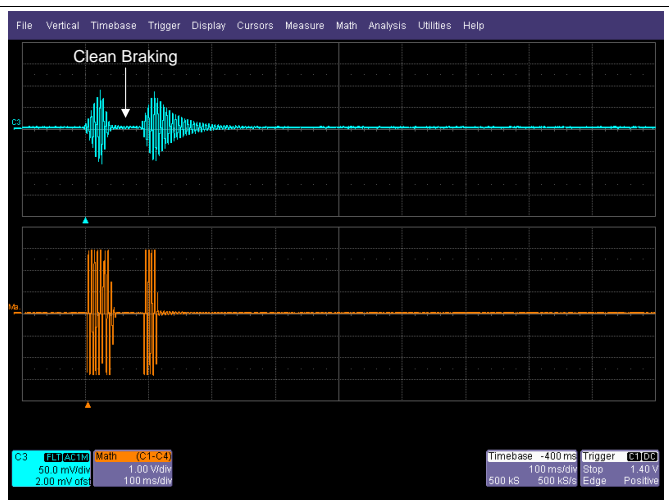


Figure 7. Double Click Waveform in Closed-Loop

If overdriving is desired, careful manual tuning must be performed for each amplitude level such that the LRA overdrives optimally. If the overdrive signal is not strong enough or for long enough time, the LRA will under-overdrive, which translates to longer start-times and brake-times. If the overdrive signal is too strong or for too long, the LRA will over-overdrive, which translates to the LRA moving beyond its desired level of strength, potentially causing a "bump" in the haptic feel. The optimal overdrive signal can be defined as the one that minimizes start-time and brake-time but is not perceptible in the acceleration waveform.

Figure 8 shows a buzz waveform with an open-loop driver and no braking. This waveform highlights the effect that over-overdriving will have in acceleration. For comparison purposes, Figure 9 shows a buzz waveform with a closed-loop driver and no braking.

Note that if overdrive and braking are used in an open-loop system, the manual tuning information must be contained in the LRA's driving signal, which means that for different actuators, different driving signals must be used.

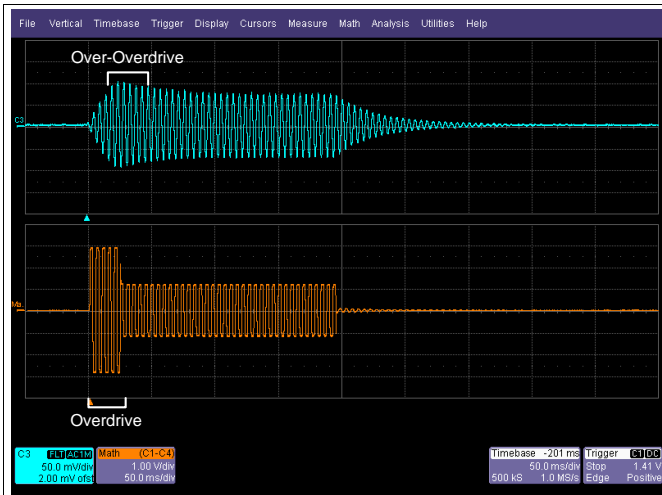


Figure 8. Buzz Waveform in Open-Loop With Over-Overdrive Problems

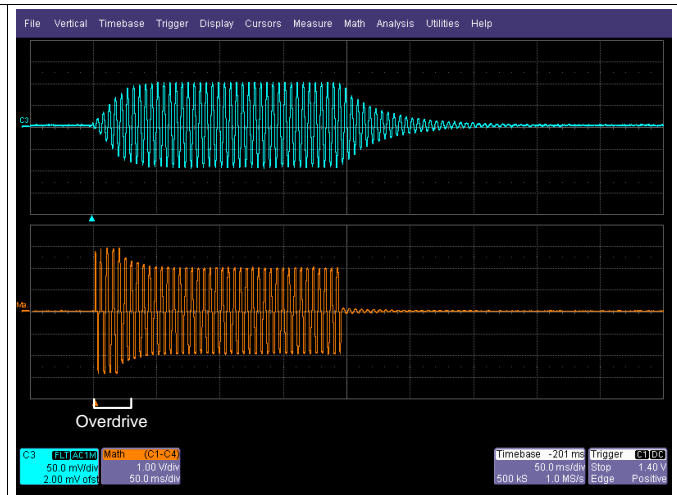


Figure 9. Buzz Waveform in Closed-Loop

4 Driving an LRA in Closed-Loop

There are many types of closed-loop systems that can be implemented to control an LRA. A resonance tracking closed-loop system for LRA (auto-resonance), constantly monitors the resonance frequency of the LRA and adjusts the driving frequency to track it, maximizing the vibration strength for a given driving voltage. Such an engine is present in devices such as the DRV2603, DRV2605, and DRV2605L. A level tracking closed-loop system, once calibrated, regulates the output vibration strength to the desired level, irrespective of variations of the resonance frequency. Such an engine is present in devices such as the DRV2605 and DRV2605L.

A closed loop system that implements resonance tracking and level tracking loops have the advantage of automatically driving at the resonance frequency, and automatically performing overdrive and braking at optimum levels, removing the need for tedious manual tuning. An example of a closed-loop driving signal and the feedback signal is shown in Figure 10.

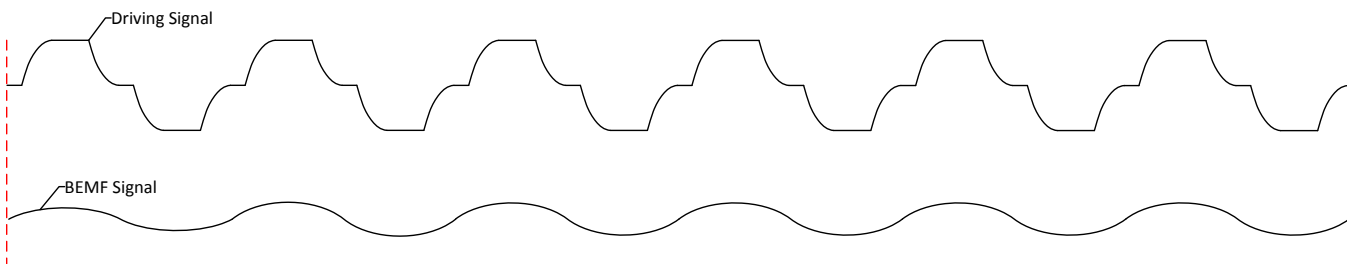


Figure 10. Closed-Loop Driving Signal With BEMF Feedback Signal

A weakness present in some closed-loop systems arises when the actuator exhibits too high of a static friction for the desired levels of energy transfer, causing the actuator to not move. Since a closed loop system relies on monitoring the actuator's movement in order to synchronize the driving signal's frequency, a non-moving actuator can cause such a system to malfunction (since the feedback signal is not valid). An example of such a scenario is when an LRA gets frozen. Advanced closed-loop drivers such as the DRV2605L employ proprietary algorithms ⁽¹⁾ to get around this limitation by driving a signal at a default frequency if the driver fails to synchronize, and then automatically synchronize once the actuator starts moving, such that features like auto-resonance and automatic overdrive and braking are available. An example of a closed-loop driving signal with the feedback signal implementing the re-synchronisation feature is shown in [Figure 11](#).

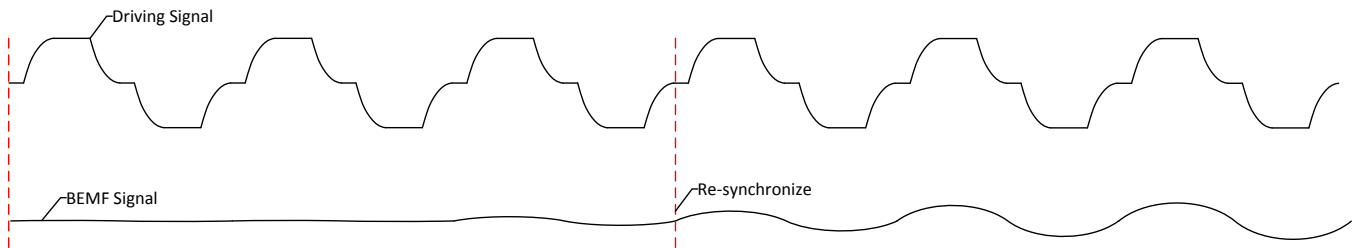


Figure 11. Closed-Loop Driving Signal With BEMF Feedback Signal and Re-Synchronisation Feature

⁽¹⁾ Patent pending control algorithm

IMPORTANT NOTICE

Texas Instruments Incorporated and its subsidiaries (TI) reserve the right to make corrections, enhancements, improvements and other changes to its semiconductor products and services per JESD46, latest issue, and to discontinue any product or service per JESD48, latest issue. Buyers should obtain the latest relevant information before placing orders and should verify that such information is current and complete. All semiconductor products (also referred to herein as "components") are sold subject to TI's terms and conditions of sale supplied at the time of order acknowledgment.

TI warrants performance of its components to the specifications applicable at the time of sale, in accordance with the warranty in TI's terms and conditions of sale of semiconductor products. Testing and other quality control techniques are used to the extent TI deems necessary to support this warranty. Except where mandated by applicable law, testing of all parameters of each component is not necessarily performed.

TI assumes no liability for applications assistance or the design of Buyers' products. Buyers are responsible for their products and applications using TI components. To minimize the risks associated with Buyers' products and applications, Buyers should provide adequate design and operating safeguards.

TI does not warrant or represent that any license, either express or implied, is granted under any patent right, copyright, mask work right, or other intellectual property right relating to any combination, machine, or process in which TI components or services are used. Information published by TI regarding third-party products or services does not constitute a license to use such products or services or a warranty or endorsement thereof. Use of such information may require a license from a third party under the patents or other intellectual property of the third party, or a license from TI under the patents or other intellectual property of TI.

Reproduction of significant portions of TI information in TI data books or data sheets is permissible only if reproduction is without alteration and is accompanied by all associated warranties, conditions, limitations, and notices. TI is not responsible or liable for such altered documentation. Information of third parties may be subject to additional restrictions.

Resale of TI components or services with statements different from or beyond the parameters stated by TI for that component or service voids all express and any implied warranties for the associated TI component or service and is an unfair and deceptive business practice. TI is not responsible or liable for any such statements.

Buyer acknowledges and agrees that it is solely responsible for compliance with all legal, regulatory and safety-related requirements concerning its products, and any use of TI components in its applications, notwithstanding any applications-related information or support that may be provided by TI. Buyer represents and agrees that it has all the necessary expertise to create and implement safeguards which anticipate dangerous consequences of failures, monitor failures and their consequences, lessen the likelihood of failures that might cause harm and take appropriate remedial actions. Buyer will fully indemnify TI and its representatives against any damages arising out of the use of any TI components in safety-critical applications.

In some cases, TI components may be promoted specifically to facilitate safety-related applications. With such components, TI's goal is to help enable customers to design and create their own end-product solutions that meet applicable functional safety standards and requirements. Nonetheless, such components are subject to these terms.

No TI components are authorized for use in FDA Class III (or similar life-critical medical equipment) unless authorized officers of the parties have executed a special agreement specifically governing such use.

Only those TI components which TI has specifically designated as military grade or "enhanced plastic" are designed and intended for use in military/aerospace applications or environments. Buyer acknowledges and agrees that any military or aerospace use of TI components which have **not** been so designated is solely at the Buyer's risk, and that Buyer is solely responsible for compliance with all legal and regulatory requirements in connection with such use.

TI has specifically designated certain components as meeting ISO/TS16949 requirements, mainly for automotive use. In any case of use of non-designated products, TI will not be responsible for any failure to meet ISO/TS16949.

Products

Audio	www.ti.com/audio
Amplifiers	amplifier.ti.com
Data Converters	dataconverter.ti.com
DLP® Products	www.dlp.com
DSP	dsp.ti.com
Clocks and Timers	www.ti.com/clocks
Interface	interface.ti.com
Logic	logic.ti.com
Power Mgmt	power.ti.com
Microcontrollers	microcontroller.ti.com
RFID	www.ti-rfid.com
OMAP Applications Processors	www.ti.com/omap
Wireless Connectivity	www.ti.com/wirelessconnectivity

Applications

Automotive and Transportation	www.ti.com/automotive
Communications and Telecom	www.ti.com/communications
Computers and Peripherals	www.ti.com/computers
Consumer Electronics	www.ti.com/consumer-apps
Energy and Lighting	www.ti.com/energy
Industrial	www.ti.com/industrial
Medical	www.ti.com/medical
Security	www.ti.com/security
Space, Avionics and Defense	www.ti.com/space-avionics-defense
Video and Imaging	www.ti.com/video

TI E2E Community

e2e.ti.com