

Power-supply margining circuit for LDOs using a precision DAC

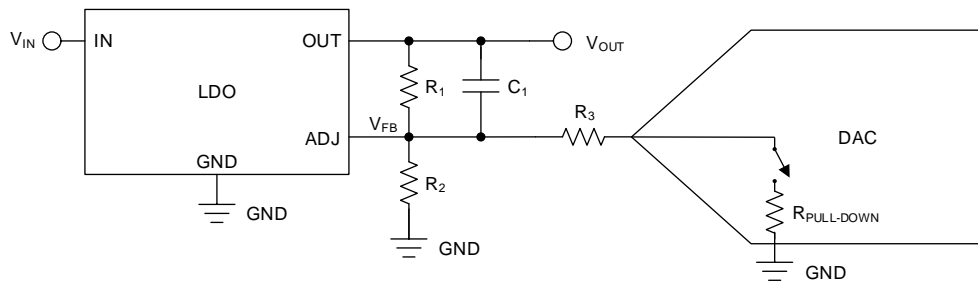
Uttama Kumar Sahu

Design Goals

Power Supply (VDD)	Nominal Output	Margin High	Margin Low
5V	3.3V	3.3V + 10%	3.3V – 10%

Design Description

A power-supply margining circuit is used for tuning the output of a power converter. This is done either to adjust the offset and drift of the power supply output or to program a desired value at the output. Adjustable power supplies like Low-Dropout Regulators (LDOs) and DC/DC converters provide a feedback or adjust input that is used to set the desired output. A precision voltage output digital-to-analog converter (DAC) is suitable for controlling the power-supply output linearly. The following image shows an example power-supply margining circuit. Typical applications of power-supply margining is in [Test and Measurement](#), [Communications Equipment](#), and [Power Delivery](#).



Design Notes

1. Choose a DAC with the required resolution, pulldown resistor value, and output range.
2. Derive the relationship of the DAC output to V_{OUT} .
3. Choose R_1 based on typical current through the feedback circuit.
4. Calculate the start-up or nominal value of V_{DAC} considering the power-down and power-up conditions of the DAC.
5. Select R_2 , and R_3 such that the desired start-up output voltage is met along with the DAC output voltage range for the desired tuning range.
6. Calculate the margin low and margin high DAC outputs.
7. Choose a compensation capacitor to achieve the desired step response.

Design Steps

1. Select the LDO TPS79501 device for the calculations. The DAC53608 device is an ultra-low cost, 10-bit, 8-channel, unipolar output DAC suitable for such applications
2. The output voltage of the power supply is given by:

$$V_{OUT} = V_{REF} + I_1 R_1 = V_{REF} + (I_2 + I_3) R_1$$

where

- I_1 is the current flowing through R_1
- I_2 is the current flowing through R_2
- I_3 is the current flowing through R_3

DACs in this application typically include power-down mode, which includes an internal pulldown resistor at the voltage output. Hence, replacing the values of the currents in the previous equation yields:

- When the DAC is in *Power Down* mode:

$$V_{OUT} = V_{REF} + \left(\left(\frac{V_{REF}}{R_2} \right) + \left(\frac{V_{REF}}{R_3 + R_{PULL-DOWN}} \right) \right) R_1$$

- When the DAC output is powered-up:

$$V_{OUT} = V_{REF} + \left(\left(\frac{V_{REF}}{R_2} \right) + \left(\frac{V_{REF} - V_{DAC}}{R_3} \right) \right) R_1$$

For DAC53608, $R_{PULL-DOWN}$ is 10k Ω . For the LDO part number TPS79501, the value of V_{REF} is 1.225V.

3. R_1 can be calculated by the following method. The current through the FB pin of TPS79501 is 1 μ A. To make this current negligible, I_1 should be $\gg I_{FB}$. Choose I_1 to be 50 μ A. Calculate R_1 as follows:

$$R_1 = \frac{V_{OUT} - V_{REF}}{I_1} = 41.5 \text{ k}\Omega$$

The nominal value of I_1 can be given by:

- When the DAC is in *Power Down* mode

$$I_{1-Nom} = \left(\frac{V_{REF}}{R_2} \right) + \left(\frac{V_{REF}}{R_3 + 10 \text{ k}\Omega} \right)$$

- When the DAC output is powered-up

$$I_{1-Nom} = \left(\frac{V_{REF}}{R_2} \right) + \left(\frac{V_{REF} - V_{DAC}}{R_3} \right)$$

The values of I_1 at *Margin High* and *Margin Low* outputs are given by:

$$I_{1-HIGH} = \frac{V_{OUT-HIGH} - V_{REF}}{R_1} = 57.95 \text{ }\mu\text{A}$$

$$I_{1-LOW} = \frac{V_{OUT-LOW} - V_{REF}}{R_1} = 42.05 \text{ }\mu\text{A}$$

$$I_{1-HIGH} - I_{1-Nom} = I_{1-Nom} - I_{1-LOW} = 7.65 \text{ }\mu\text{A}$$

4. The nominal or startup value of V_{DAC} can be calculated using the following method:

To make sure the 10-k Ω resistor does not impact when the DAC is transitioning from power-down to power-up, the power-up value for the DAC voltage can be calculated with:

$$\frac{V_{REF}}{R_3 + 10 \text{ k}\Omega} = \frac{V_{REF} - V_{DAC}}{R_3}$$

The previous equation can be further simplified to:

$$V_{DAC} = V_{REF} \left(\frac{10 \text{ k}\Omega}{R_3 + 10 \text{ k}\Omega} \right)$$

5. The values of R_2 and R_3 can be calculated as follows:

If the power-up or nominal value of V_{DAC} is kept at one-third of V_{REF} , that is, 408.3mV, then R_3 will be $2 \times 10k\Omega = 20k\Omega$. R_2 can be calculated as:

$$\frac{V_{REF}}{R_2} + \frac{V_{REF}}{R_3 + 10k\Omega} = 50\mu A$$

Replacing the value of R_3 , R_2 can be calculated to equal 133k Ω .

6. Subtracting the *Margin High* and *Nominal* values of I_1 and the corresponding equations, we get

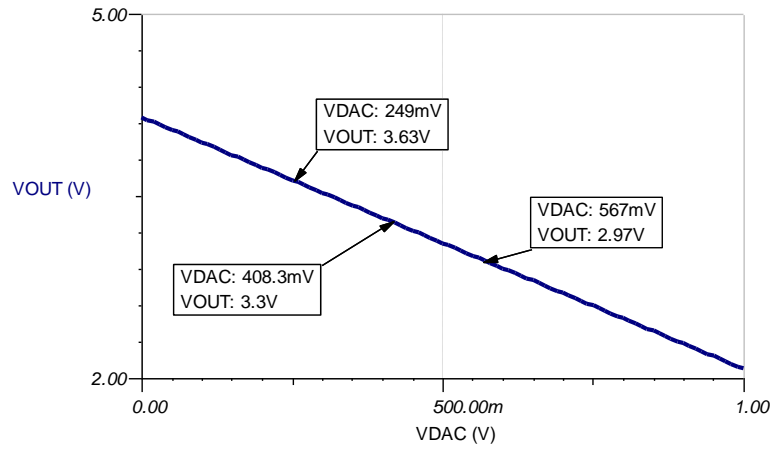
$$\frac{V_{REF} - V_{DAC}}{R_3} - \frac{V_{REF}}{R_3 + 10k\Omega} = 7.95 \mu A$$

So, the *Margin High* value of V_{DAC} will be 249mV and similarly, the *Margin Low* value can be calculated as 567mV from the following equation:

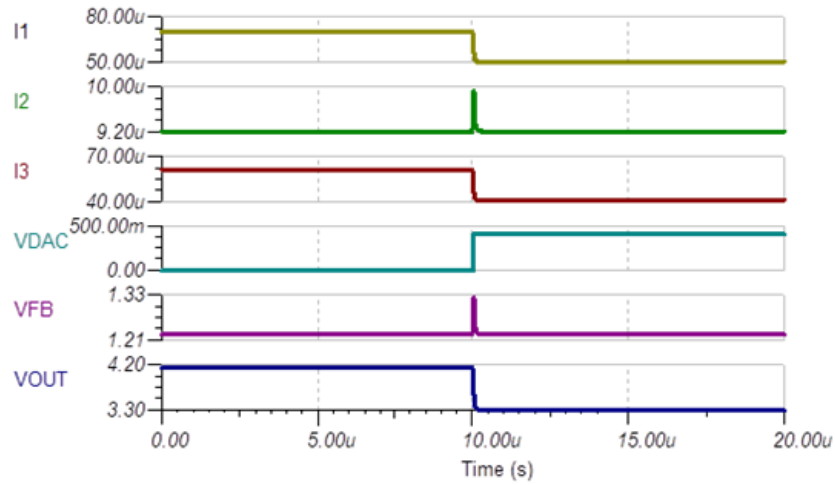
$$\frac{V_{REF}}{R_3 + 10k\Omega} - \frac{V_{REF} - V_{DAC}}{R_3} = 7.95 \mu A$$

7. The step response of this circuit without a compensation capacitor has some overshoot and ringing as shown in the following curves. This kind of transient response can cause errors at the load circuits. To minimize this, use a compensation capacitor C_1 . The value of this capacitance is usually obtained through simulation. A comparative output shows the waveforms with a compensation capacitor of 22pF.

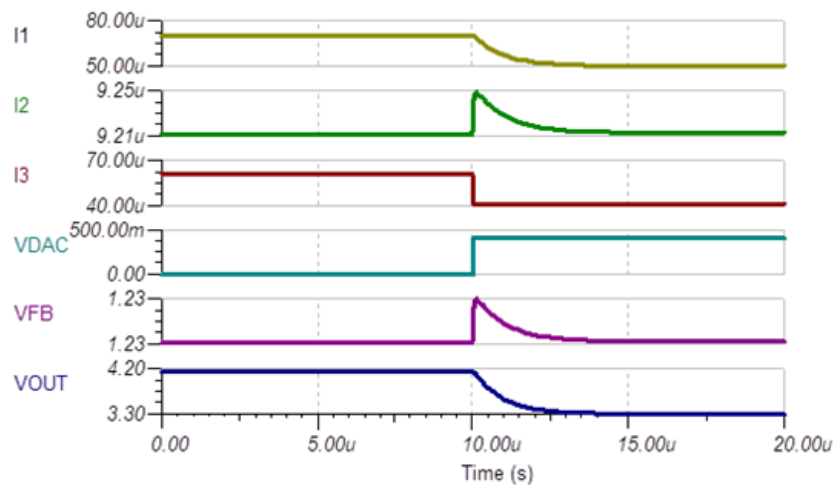
DC Transfer Characteristics



Small Signal Step Response Without Compensation



Small-Signal Step Response With C₁= 22pF



Design Featured Devices and Alternative Parts

Device	Key Features	Link
DAC53608	8-channel 10-bit, I2C interface, buffered-voltage-output DAC	http://www.ti.com/product/DAC53608
DAC60508	8-channel, true 12-bit, SPI, voltage-output DAC with precision internal reference	http://www.ti.com/product/DAC60508
DAC60501	12-bit, 1-LSB INL, DAC with precision internal reference	http://www.ti.com/product/DAC60501
DAC8831	16-bit, ultra-low power, voltage output DAC	http://www.ti.com/product/DAC8831
TPS79501-Q1	Automotive catalog single output LDO, 500mA, adj.(1.2 to 5.5V), low-noise, high PSRR	http://www.ti.com/product/TPS79501-Q1

Design References

See [Analog Engineer's Circuit Cookbooks](#) for TI's comprehensive circuit library.

Link to Key Files

TINA source files – <http://www.ti.com/lit/zip/sbam415>.

For direct support from TI Engineers use the E2E community

e2e.ti.com

Revision History

Revision	Date	Change
A	September 2019	Updated circuit image on first page. Fixed typographical error in the first equation on the third page.

IMPORTANT NOTICE AND DISCLAIMER

TI PROVIDES TECHNICAL AND RELIABILITY DATA (INCLUDING DATASHEETS), DESIGN RESOURCES (INCLUDING REFERENCE DESIGNS), APPLICATION OR OTHER DESIGN ADVICE, WEB TOOLS, SAFETY INFORMATION, AND OTHER RESOURCES "AS IS" AND WITH ALL FAULTS, AND DISCLAIMS ALL WARRANTIES, EXPRESS AND IMPLIED, INCLUDING WITHOUT LIMITATION ANY IMPLIED WARRANTIES OF MERCHANTABILITY, FITNESS FOR A PARTICULAR PURPOSE OR NON-INFRINGEMENT OF THIRD PARTY INTELLECTUAL PROPERTY RIGHTS.

These resources are intended for skilled developers designing with TI products. You are solely responsible for (1) selecting the appropriate TI products for your application, (2) designing, validating and testing your application, and (3) ensuring your application meets applicable standards, and any other safety, security, or other requirements. These resources are subject to change without notice. TI grants you permission to use these resources only for development of an application that uses the TI products described in the resource. Other reproduction and display of these resources is prohibited. No license is granted to any other TI intellectual property right or to any third party intellectual property right. TI disclaims responsibility for, and you will fully indemnify TI and its representatives against, any claims, damages, costs, losses, and liabilities arising out of your use of these resources.

TI's products are provided subject to TI's Terms of Sale (www.ti.com/legal/termsofsale.html) or other applicable terms available either on ti.com or provided in conjunction with such TI products. TI's provision of these resources does not expand or otherwise alter TI's applicable warranties or warranty disclaimers for TI products.

Mailing Address: Texas Instruments, Post Office Box 655303, Dallas, Texas 75265
Copyright © 2019, Texas Instruments Incorporated