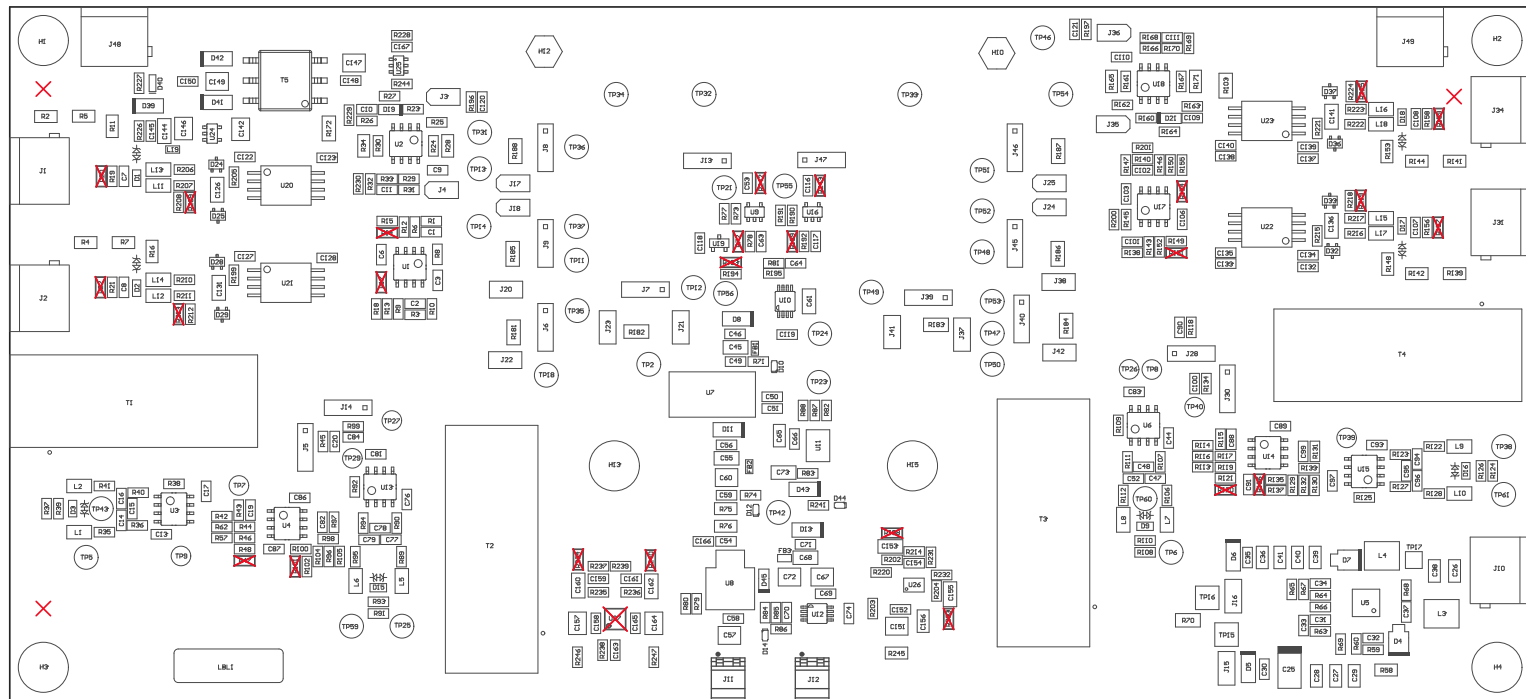
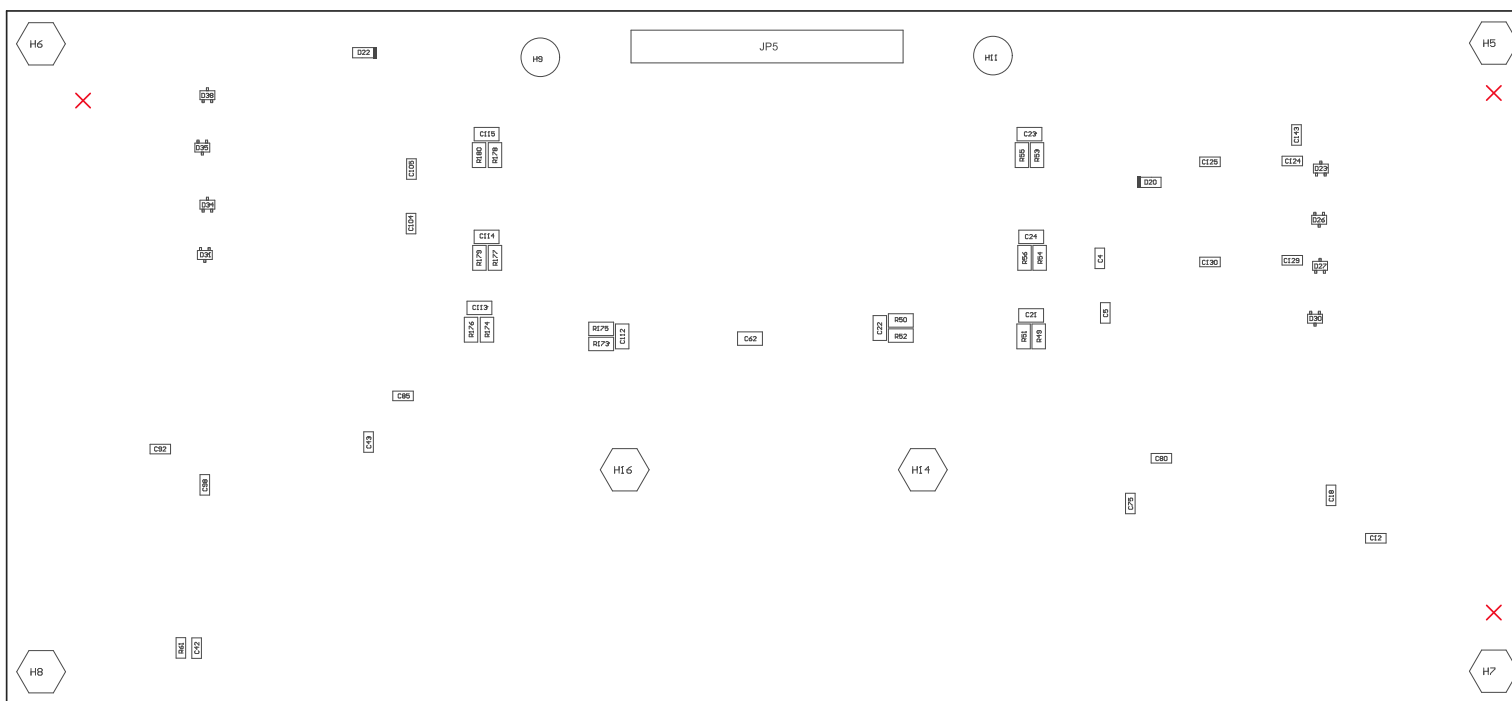


- 221 ■ Install label in silkscreened box after final wash. Text shall be 8 pt font. Text shall be per the Label Table in the PDF schematic.
- 222 ■ These assemblies are ESD sensitive, ESD precautions shall be observed.
- 223 ■ These assemblies must be clean and free from flux and all contaminants. Use of no clean flux is not acceptable.
- 224 ■ These assemblies must comply with workmanship standards IPC-A-610 Class 2, unless otherwise specified.



COMPONENTS MARKED 'DNP' SHOULD NOT BE POPULATED.
ASSEMBLY VARIANT: 001

PCB VIEWED FROM TOP SIDE	BOARD #: TIDA-834_ISO	REV: E2	SUN REV: Not In VersionControl
M5 Assembly Top	TID #:	TIDA-00834_ISO	
PLOT NAME = Top Assembly Drawing	GENERATED	: 11/25/2016 3:42:04 PM	TEXAS INSTRUMENTS



COMPONENTS MARKED 'DNP' SHOULD NOT BE POPULATED.
 ASSEMBLY VARIANT: 001

PCB VIEWED FROM BOTTOM SIDE	BOARD #: TIDA-834_ISO	REV: E2	SUN REV: Not In VersionControl
M6 Assembly Bottom	TID #:	TIDA-00834_ISO	
PLOT NAME = Bottom Assembly Drawing	GENERATED	: 11/25/2016 3:42:09 PM	TEXAS INSTRUMENTS