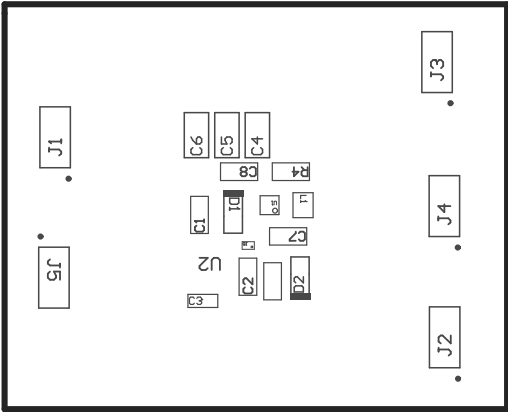


ZZ2 ■ These assemblies are ESD sensitive, ESD precautions shall be observed.
 ZZ3 ■ These assemblies must be clean and free from flux and all contaminants. Use of no clean flux is not acceptable.
 ZZ4 ■ These assemblies must comply with workmanship standards IPC-A-610 Class 2, unless otherwise specified.



COMPONENTS MARKED 'DNP' SHOULD NOT BE POPULATED.
 ASSEMBLY VARIANT: 001

PCB VIEWED FROM TOP SIDE	BOARD #: PMP9777	REV: E1	SUN REV: Not In VersionControl
	TID #: PMP9777		
PLOT NAME = Top Assembly Drawing	GENERATED : 11/18/2015 4:09:56 PM		TEXAS INSTRUMENTS



COMPONENTS MARKED 'DNP' SHOULD NOT BE POPULATED.
ASSEMBLY VARIANT: 001

PCB VIEWED FROM BOTTOM SIDE	BOARD #: PMP9777	REV: E1	SUN REV: Not In VersionControl
	TID #: PMP9777		
PLOT NAME = Bottom Assembly Drawing	GENERATED : 11/18/2015 4:09:57 PM		TEXAS INSTRUMENTS