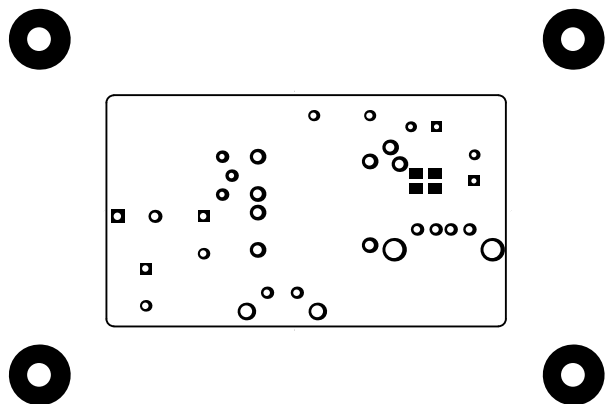
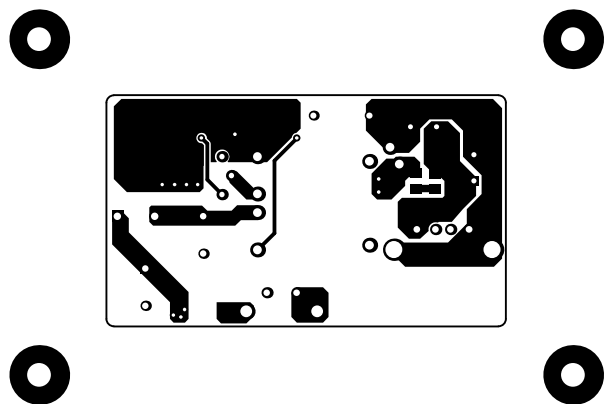


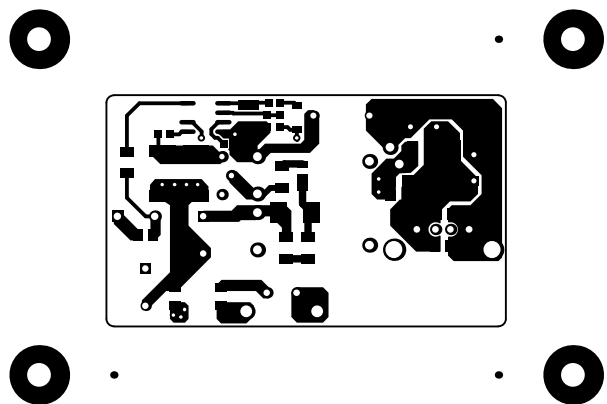
ALL ARTWORK VIEWED FROM TOP SIDE	BOARD #: PMP9517	REV: E1	SUN REV: Not In VersionControl
LAYER NAME = Top Overlay			
PLOT NAME = Top Overlay	GENERATED : 3/19/2014 8:58:04 AM	TEXAS INSTRUMENTS	



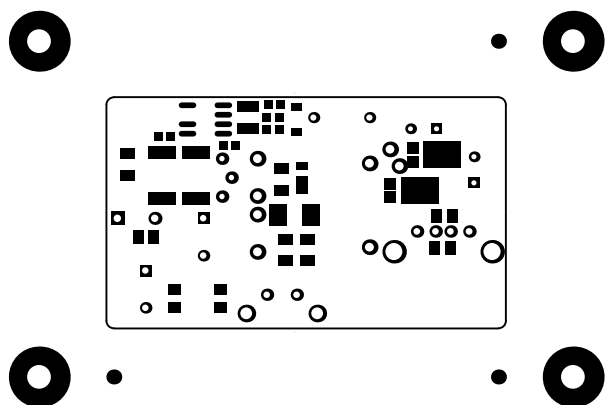
ALL ARTWORK VIEWED FROM TOP SIDE	BOARD #: PMP9517	REV: E1	SUN REV: Not In VersionControl
LAYER NAME = Top Solder			
PLOT NAME = Top Solder Mask	GENERATED : 3/19/2014 8:58:05 AM	TEXAS INSTRUMENTS	



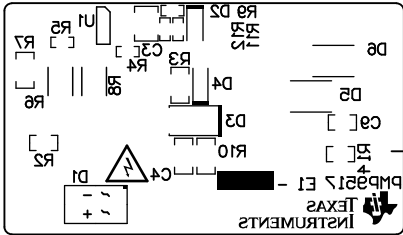
ALL ARTWORK VIEWED FROM TOP SIDE	BOARD #: PMP9517	REV: E1	SUN REV: Not In VersionControl
LAYER NAME = Top Layer			
PLOT NAME = Top Layer	GENERATED : 3/19/2014 8:58:05 AM	TEXAS INSTRUMENTS	



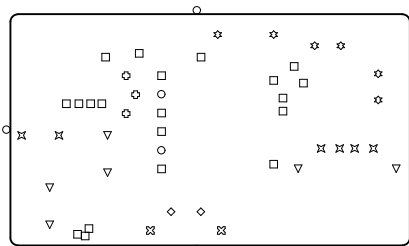
ALL ARTWORK VIEWED FROM TOP SIDE	BOARD #: PMP9517	REV: E1	SUN REV: Not In VersionControl
LAYER NAME = Bottom Layer			
PLOT NAME = Bottom Layer	GENERATED : 3/19/2014 8:58:05 AM	TEXAS INSTRUMENTS	



ALL ARTWORK VIEWED FROM TOP SIDE	BOARD #: PMP9517	REV: E1	SUN REV: Not In VersionControl
LAYER NAME = Bottom Solder			
PLOT NAME = Bottom Solder Mask	GENERATED : 3/19/2014 8:58:05 AM	TEXAS INSTRUMENTS	



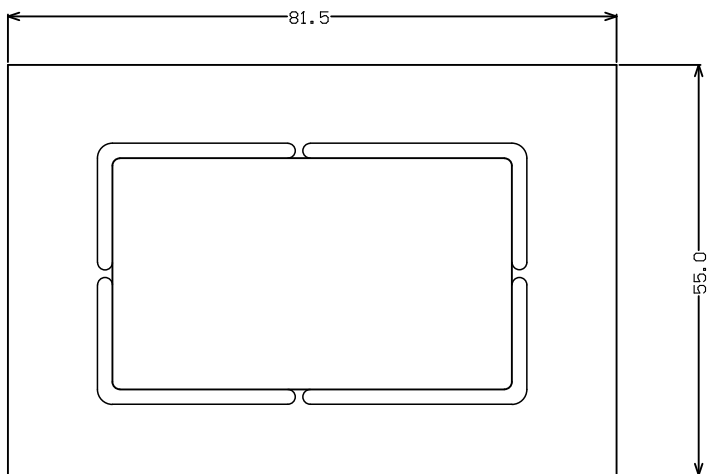
ALL ARTWORK VIEWED FROM TOP SIDE	BOARD #: PMP9517	REV: E1	SUN REV: Not In VersionControl
LAYER NAME = Bottom Overlay			
PLOT NAME = Bottom Overlay	GENERATED : 3/19/2014 8:58:05 AM	TEXAS INSTRUMENTS	



Symbol	Hit Count	Tool Size	Plated	Hole Type
○	4	0.5mm (19.685mil)	NPTH	Round
□	12	0.5mm (19.685mil)	PTH	Round
☆	4	0.7mm (27.559mil)	PTH	Round
⊕	3	0.75mm (29.528mil)	PTH	Round
☆	2	0.85mm (33.465mil)	PTH	Round
▽	4	0.889mm (35mil)	PTH	Round
◇	2	0.9mm (35.433mil)	PTH	Round
⊗	4	0.92mm (36.221mil)	PTH	Round
⊗	2	1mm (39.37mil)	PTH	Round
○	2	1.2mm (47.244mil)	NPTH	Round
□	8	1.2mm (47.244mil)	PTH	Round
⊗	2	1.6mm (63mil)	PTH	Round
▽	2	2.3mm (90.551mil)	PTH	Round
⊕	4	3.2mm (125.984mil)	PTH	Round
55 Total				

Drill Table

ALL ARTWORK VIEWED FROM TOP SIDE	BOARD #: PMP9517	REV: E1	SUN REV: Not In VersionControl
LAYER NAME = Drill Drawing			
PLOT NAME = Drill Drawing	GENERATED : 3/19/2014 8:58:06 AM	TEXAS INSTRUMENTS	



ALL ARTWORK VIEWED FROM TOP SIDE	BOARD #: PMP9517	REV: E1	SUN REV: Not In VersionControl
LAYER NAME = M2 Board Dimensions			
PLOT NAME = Board Dimensions	GENERATED : 3/19/2014 8:58:06 AM	TEXAS INSTRUMENTS	