

# ADC10D1000 Evaluation Board

## Bench Evaluation Board

### SPECIAL NOTES

These schematics reflect the current state of product development. This design had NOT yet been fully tested at the time these schematics were generated.


Since this product is in development, the user of this document is strongly advised to check for the latest revision.

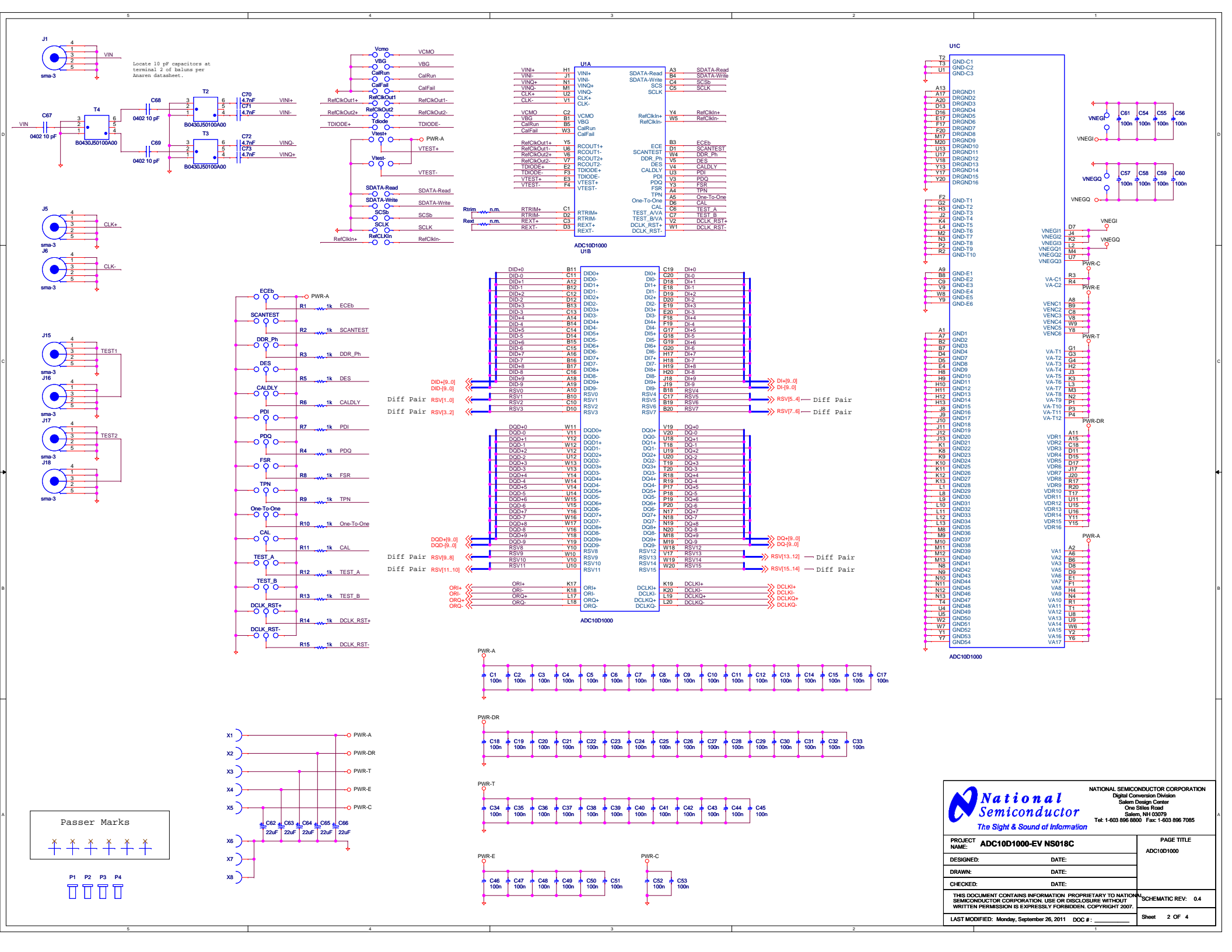
National Semiconductor reserves the right to make changes to this product.

ALL parts labeled "NA" are NOT ASSEMBLED.

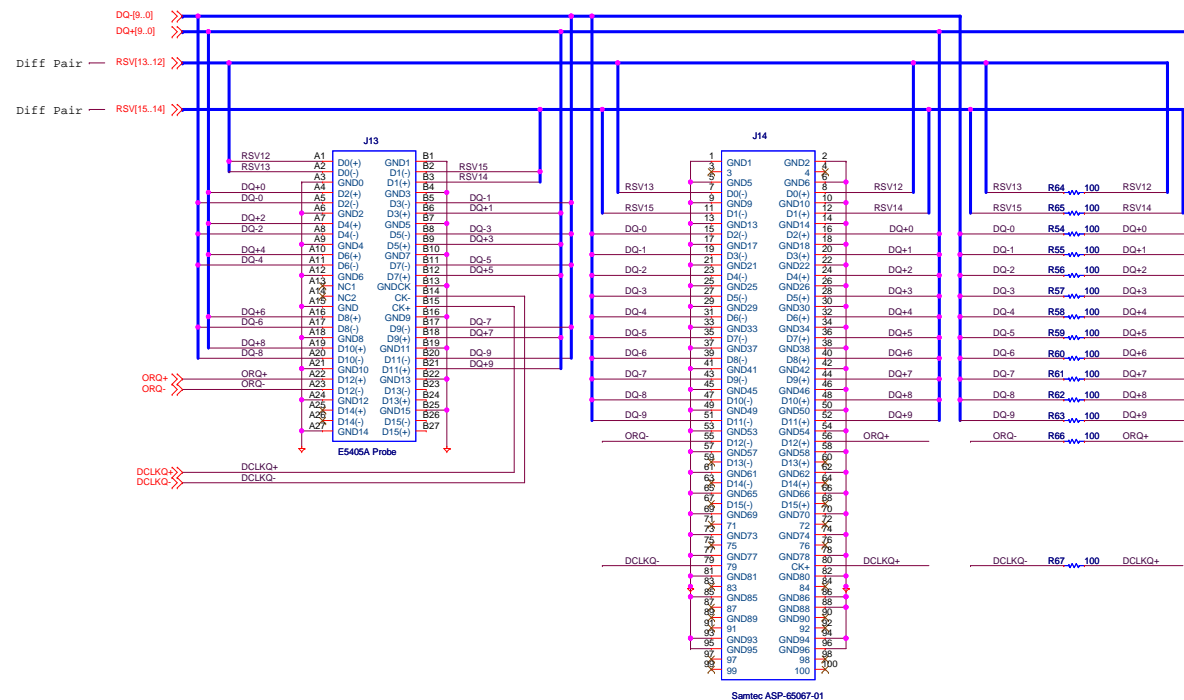
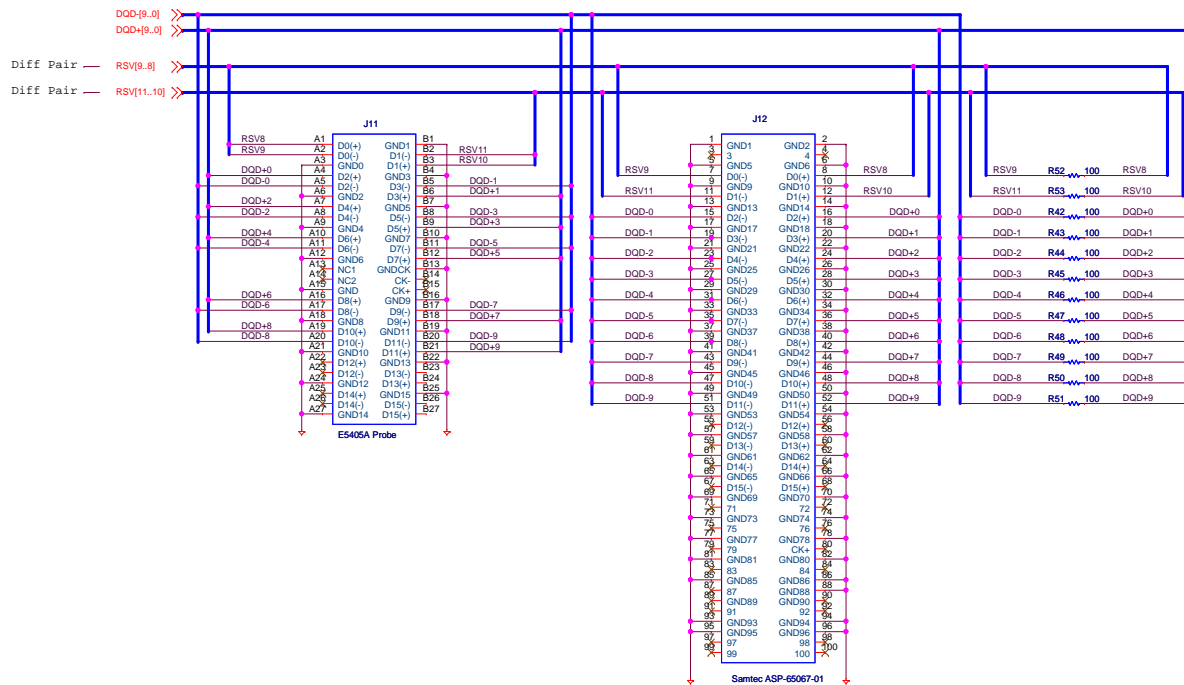
**Print Instructions:**

- To create a readable printout, we recommend to use A3 or 11x17" paper size.
- When printing from this PDF file, make sure to check the "Shrink to fit" box.

 The Sight & Sound of Information		NATIONAL SEMICONDUCTOR CORPORATION Digital Conversion Division Salem Design Center One Stiles Road Salem, NH 03079 Tel: 1-603 896 8800 Fax: 1-603 896 7065	
PROJECT NAME: <b>ADC10D1000-EV NS018C</b>		PAGE TITLE Title Page	
DESIGNED:	DATE:		
DRAWN:	DATE:		
CHECKED:	DATE:		
THIS DOCUMENT CONTAINS INFORMATION PROPRIETARY TO NATIONAL SEMICONDUCTOR CORPORATION. USE OR DISCLOSURE WITHOUT WRITTEN PERMISSION IS EXPRESSLY FORBIDDEN. COPYRIGHT 2007.		SCHEMATIC REV: 0.1	
LAST MODIFIED: Friday, September 23, 2011 DOC #:		Sheet 1 OF 4	







 <b>National Semiconductor</b> <i>The Sight &amp; Sound of Information</i>		NATIONAL SEMICONDUCTOR CORPORATION Digital Conversion Division Salem Design Center One Stiles Road Salem, NH 03079 Tel: 1-603 886 8800 Fax: 1-603 886 7065	
		PROJECT NAME: <b>ADC10D1000-EV NS018C</b>	
DESIGNED:	DATE:	PAGE TITLE Expansion Ports	
DRAWN:	DATE:		
CHECKED:	DATE:		
THIS DOCUMENT CONTAINS INFORMATION PROPRIETARY TO NATIONAL SEMICONDUCTOR CORPORATION. USE OR DISCLOSURE WITHOUT WRITTEN PERMISSION IS EXPRESSLY FORBIDDEN. COPYRIGHT 2007.		SCHEMATIC REV: 0.3	
LAST MODIFIED: Friday, September 23, 2011 DOC #:		Sheet 4 OF 4	