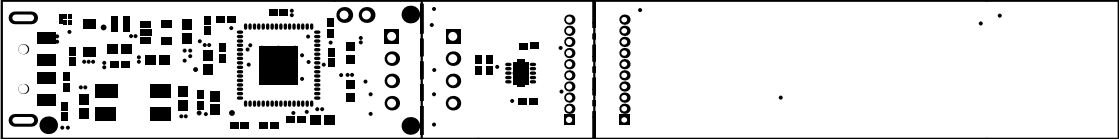
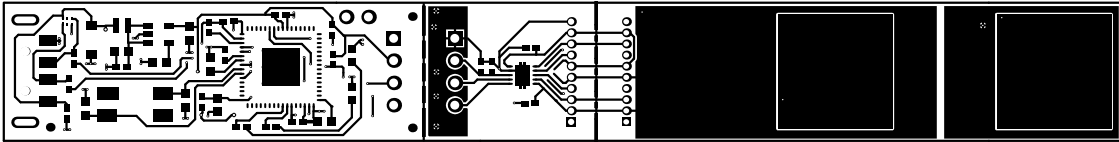




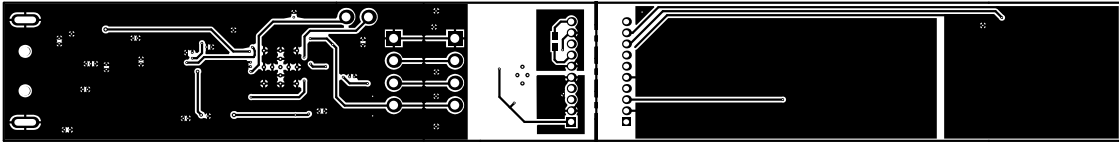
ALL ARTWORK VIEWED FROM TOP SIDE	BOARD #: SU601093	REV: B	SUN REV: Not In VersionControl
LAYER NAME = Top Overlay			
PLOT NAME = Top Overlay	GENERATED : 8/20/2014 1:13:56 PM		TEXAS INSTRUMENTS



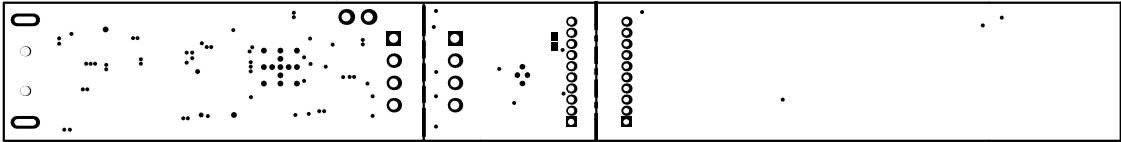
ALL ARTWORK VIEWED FROM TOP SIDE	BOARD #: SV601093	REV: B	SUN REV: Not In VersionControl
LAYER NAME = Top Solder			
PLOT NAME = Top Solder Mask	GENERATED : 8/20/2014 1:13:57 PM		TEXAS INSTRUMENTS



ALL ARTWORK VIEWED FROM TOP SIDE	BOARD #: SV601093	REV: B	SUN REV: Not In VersionControl
LAYER NAME = Top Layer			
PLOT NAME = Top Layer	GENERATED : 8/20/2014 1:13:57 PM	TEXAS INSTRUMENTS	



ALL ARTWORK VIEWED FROM TOP SIDE	BOARD #: SV601093	REV: B	SUN REV: Not In VersionControl
LAYER NAME = Bottom Layer			
PLOT NAME = Bottom Layer	GENERATED : 8/20/2014 1:13:58 PM		TEXAS INSTRUMENTS



ALL ARTWORK VIEWED FROM TOP SIDE	BOARD #: SV601093	REV: B	SUN REV: Not In VersionControl
LAYER NAME = Bottom Solder			
PLOT NAME = Bottom Solder Mask	GENERATED : 8/20/2014 1:13:59 PM	TEXAS INSTRUMENTS	

INSTRUMENTS

TEXAS

REV B

SV601093-

1

2

3

4

5

6

7

8

9

10

11

12

13

14

15

16

17

18

19

20

21

22

23

24

25

26

27

28

29

30

31

32

33

34

35

36

37

38

39

40

41

42

43

44

45

46

47

48

49

50

51

52

53

54

55

56

57

58

59

60

61

62

63

64

65

66

67

68

69

70

71

72

73

74

75

76

77

78

79

80

81

82

83

84

85

86

87

88

89

90

91

92

93

94

95

96

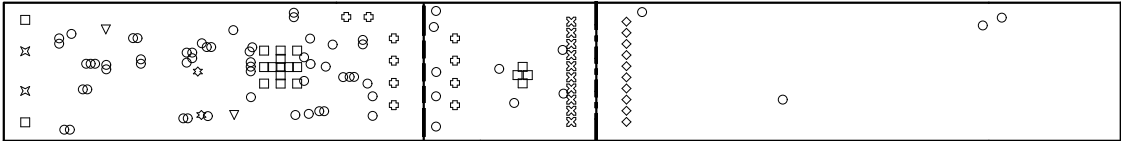
97

98

99

100

ALL ARTWORK VIEWED FROM TOP SIDE	BOARD #: SV601093	REV: B	SUN REV: Not In VersionControl
LAYER NAME = Bottom Overlay			
PLOT NAME = Bottom Overlay	GENERATED : 8/20/2014 1:13:59 PM	TEXAS INSTRUMENTS	



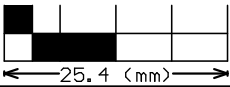
Symbol	Hit Count	Tool Size	Physical Length	Rout Path Length	Plated	Hole 1
○	66	0.152mm (6mil)			PTH	Round
□	17	0.2mm (7.874mil)			PTH	Round
☆	2	0.203mm (8mil)			PTH	Round
▽	2	0.254mm (10mil)			PTH	Round
◇	10	0.635mm (25mil)			PTH	Round
⊗	10	0.73mm (28.74mil)			PTH	Round
⊕	10	1.016mm (40mil)			PTH	Round
⊗	2	1.1mm (43.307mil)			NPTH	Round
□	2	0.762mm (30mil)	2.5mm (98.425mil)	1.738mm (68.425mil)	PTH	Slot
	121 Total					

Slot definitions : Rout Path Length = Calculated from tool start centre position to tool end centre position
Physical Length = Rout Path Length + Tool Size = Slot length as defined in the tool table

Drill Table

ALL ARTWORK VIEWED FROM TOP SIDE	BOARD #: SU601093	REV: B	SUN REV: Not In VersionControl
LAYER NAME = Drill Drawing			
PLOT NAME = Drill Drawing	GENERATED : 8/20/2014 1:14:00 PM	TEXAS INSTRUMENTS	

--	--	--



ALL ARTWORK VIEWED FROM TOP SIDE	BOARD #: SV601093	REV: B	SUN REV: Not In VersionControl
LAYER NAME = M2 Board Dimensions			
PLOT NAME = Board Dimensions	GENERATED : 8/20/2014 1:14:01 PM	TEXAS INSTRUMENTS	