

SH-J19

SH-J20

SH-J18

SH-J17

SH-J21

SH-J22

SH-J23

SH-J24

SH-J10

SH-J11

SH-J12

SH-J13

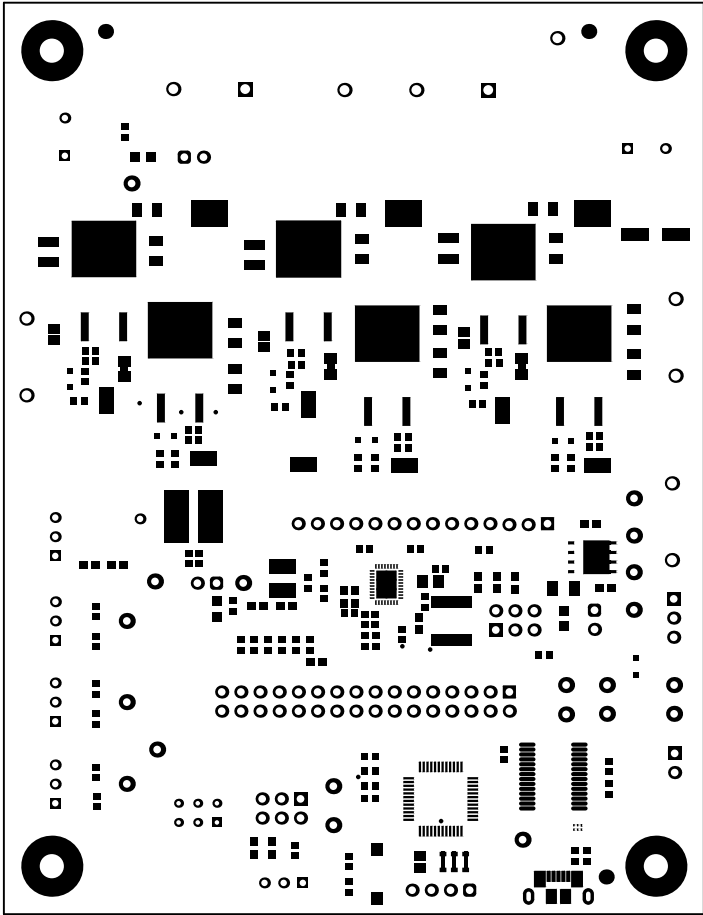
SH-J14

SH-J15

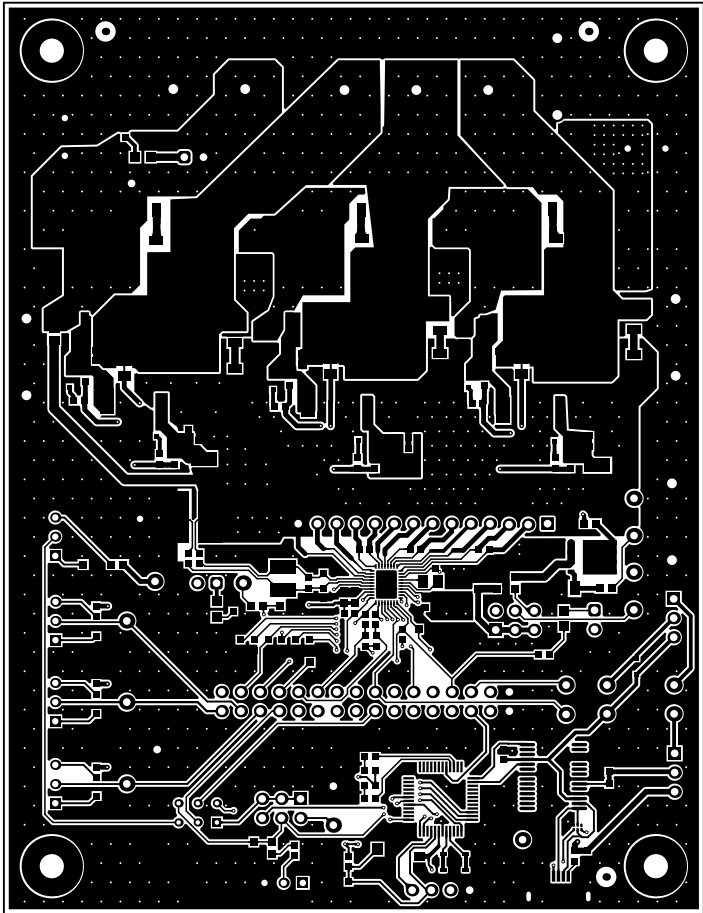
SH-J16

SH-J5

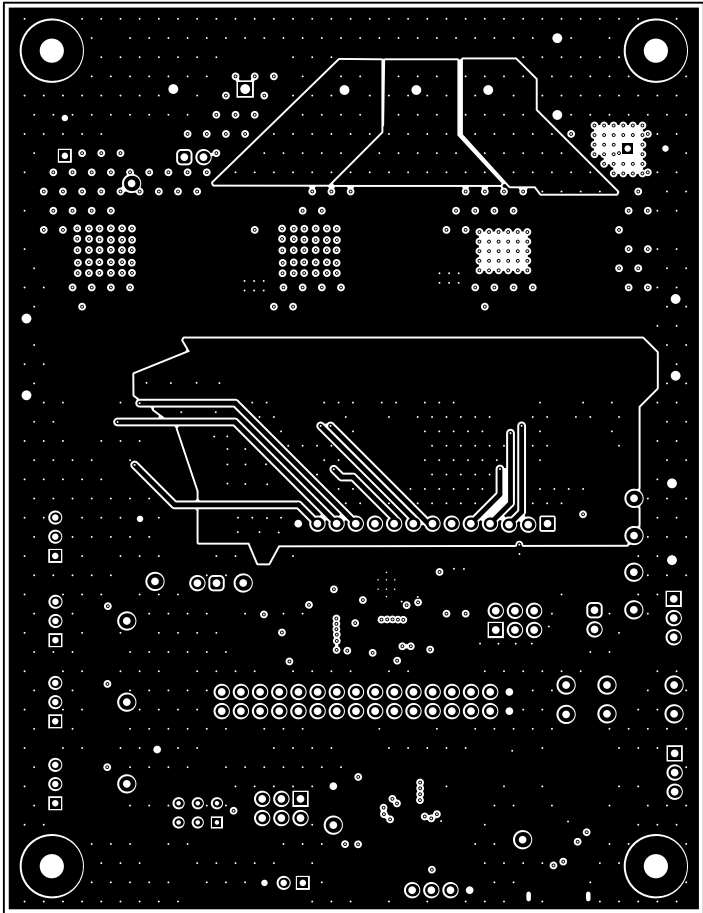
ALL ARTWORK VIEWED FROM TOP SIDE	BOARD #: MD067	REV: A	SUN REV: 801e70aabbbc8cd275686870f7b9ca45777b2a15 [Locally Modified]
LAYER NAME = Top Overlay	TID #: N/A		
PLOT NAME = Top Overlay	GENERATED : 9/20/2022 4:00:14 PM	TEXAS INSTRUMENTS	



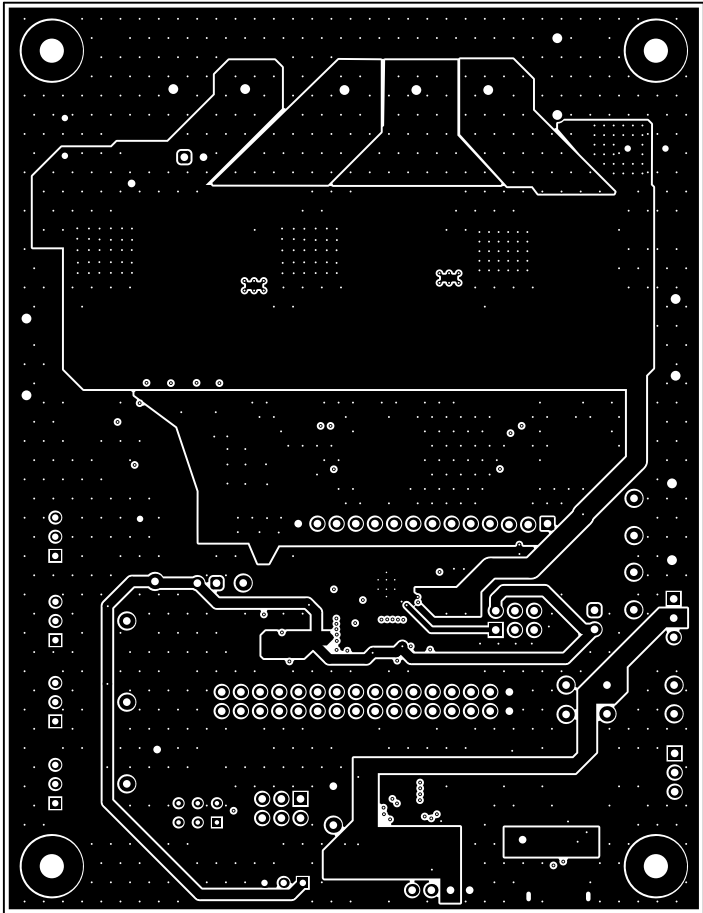
ALL ARTWORK VIEWED FROM TOP SIDE	BOARD #: MD067	REV: A	SUN REV: 801e70aabbbc8cd275686870f7b9ca45777b2a15 [Locally Modified]
LAYER NAME = Top Solder	TID #: N/A		
PLOT NAME = Top Solder Mask	GENERATED : 9/20/2022 4:00:14 PM	TEXAS INSTRUMENTS	



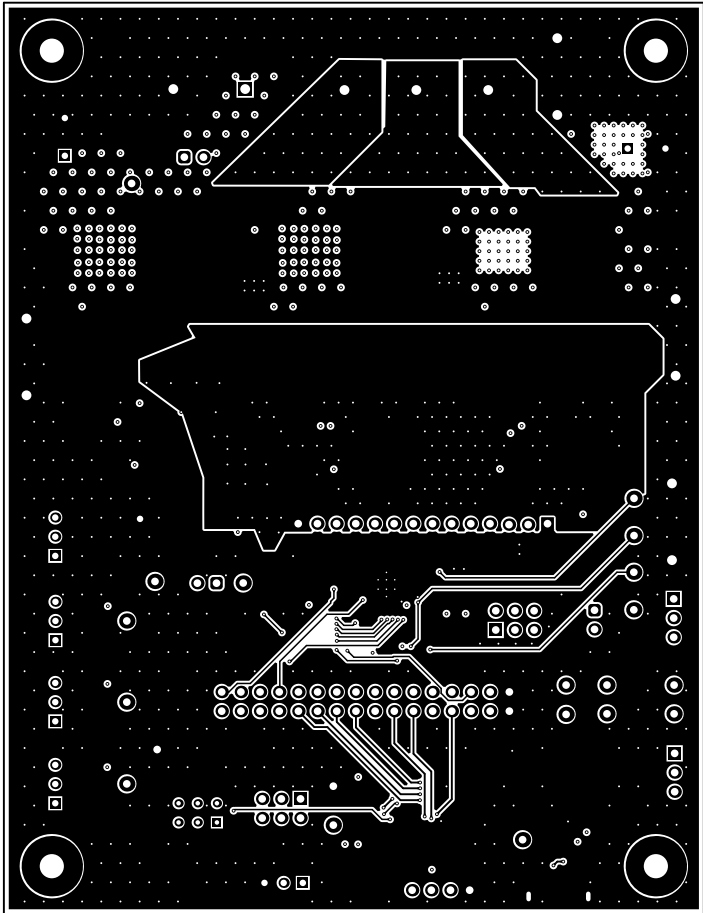
ALL ARTWORK VIEWED FROM TOP SIDE	BOARD #: MD067	REV: A	SUN REV: 801e70aabbbc8cd275686870f7b9ca45777b2a15 [Locally Modified]
LAYER NAME =	TID #: N/A		
PLOT NAME = Top Layer	GENERATED : 9/20/2022 4:00:14 PM	TEXAS INSTRUMENTS	



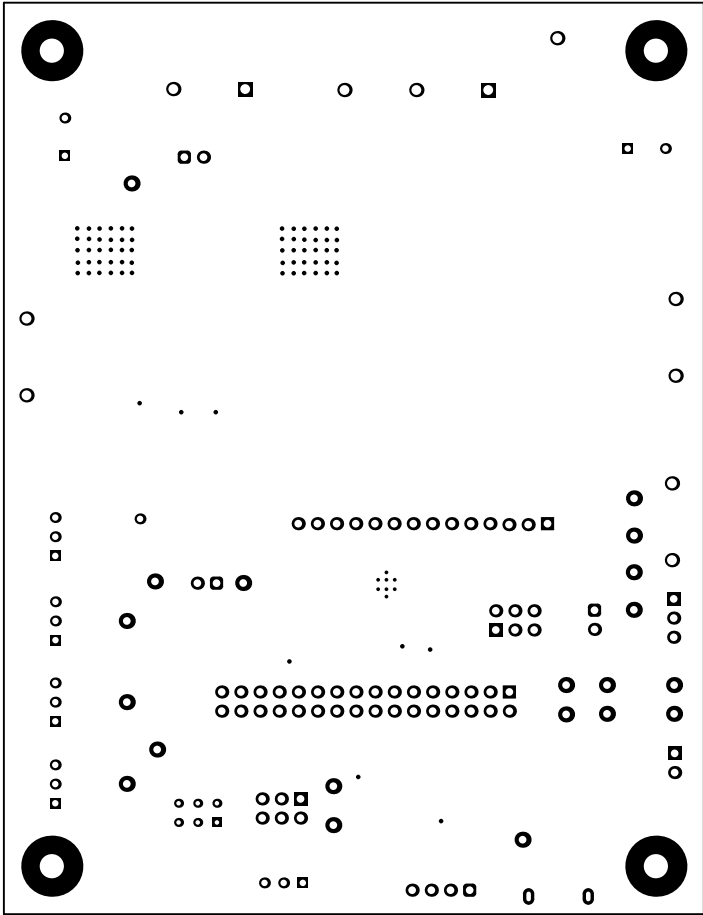
ALL ARTWORK VIEWED FROM TOP SIDE	BOARD #: MD067	REV: A	SUN REV: 801e70aabbbc8cd275686870f7b9ca45777b2a15 [Locally Modified]
LAYER NAME =	TID #: N/A		
PLOT NAME = Signal Layer 1	GENERATED : 9/20/2022 4:00:15 PM	TEXAS INSTRUMENTS	



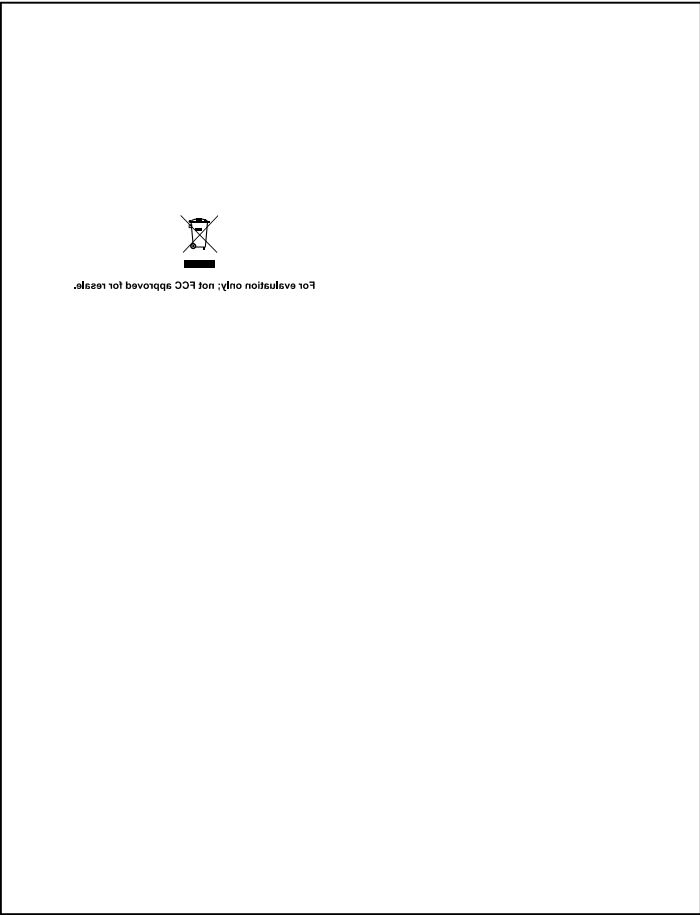
ALL ARTWORK VIEWED FROM TOP SIDE	BOARD #: MD067	REV: A	SUN REV: 801e70aabbbc8cd275686870f7b9ca45777b2a15 [Locally Modified]
LAYER NAME =	TID #: N/A		
PLOT NAME = Signal Layer 2	GENERATED : 9/20/2022 4:00:15 PM		TEXAS INSTRUMENTS



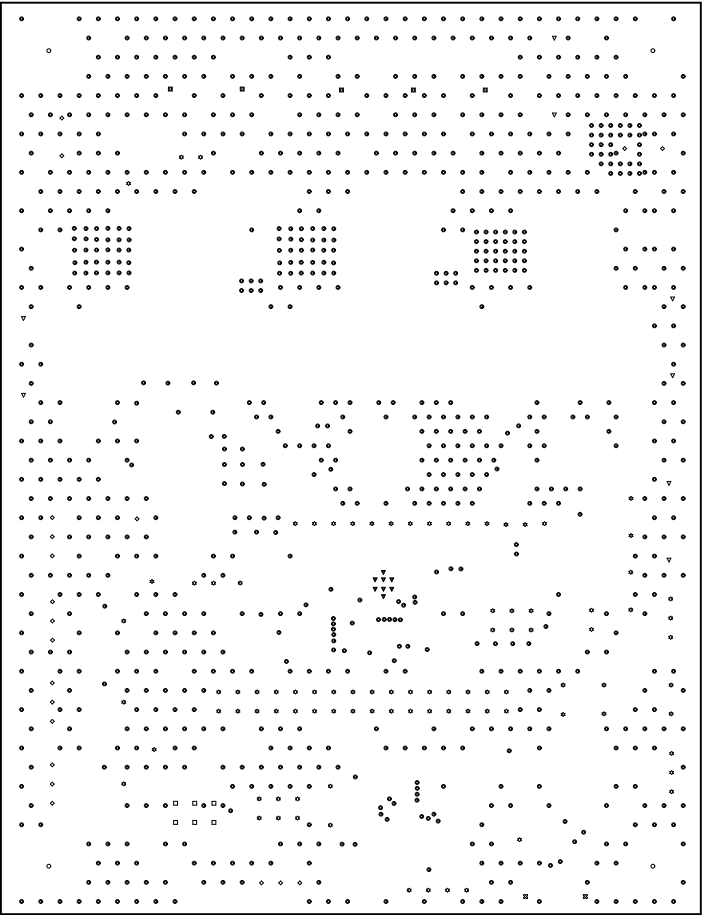
ALL ARTWORK VIEWED FROM TOP SIDE	BOARD #: MD067	REV: A	SUN REV: 801e70aabbbc8cd275686870f7b9ca45777b2a15 [Locally Modified]
LAYER NAME =	TID #: N/A		
PLOT NAME = Bottom Layer	GENERATED : 9/20/2022 4:00:15 PM	TEXAS INSTRUMENTS	



ALL ARTWORK VIEWED FROM TOP SIDE	BOARD #: MD067	REV: A	SUN REV: 801e70aabbbc8cd275686870f7b9ca45777b2a15 [Locally Modified]
LAYER NAME = Solder Side	TID #: N/A		
PLOT NAME = Bottom Solder Mask	GENERATED : 9/20/2022 4:00:16 PM		TEXAS INSTRUMENTS



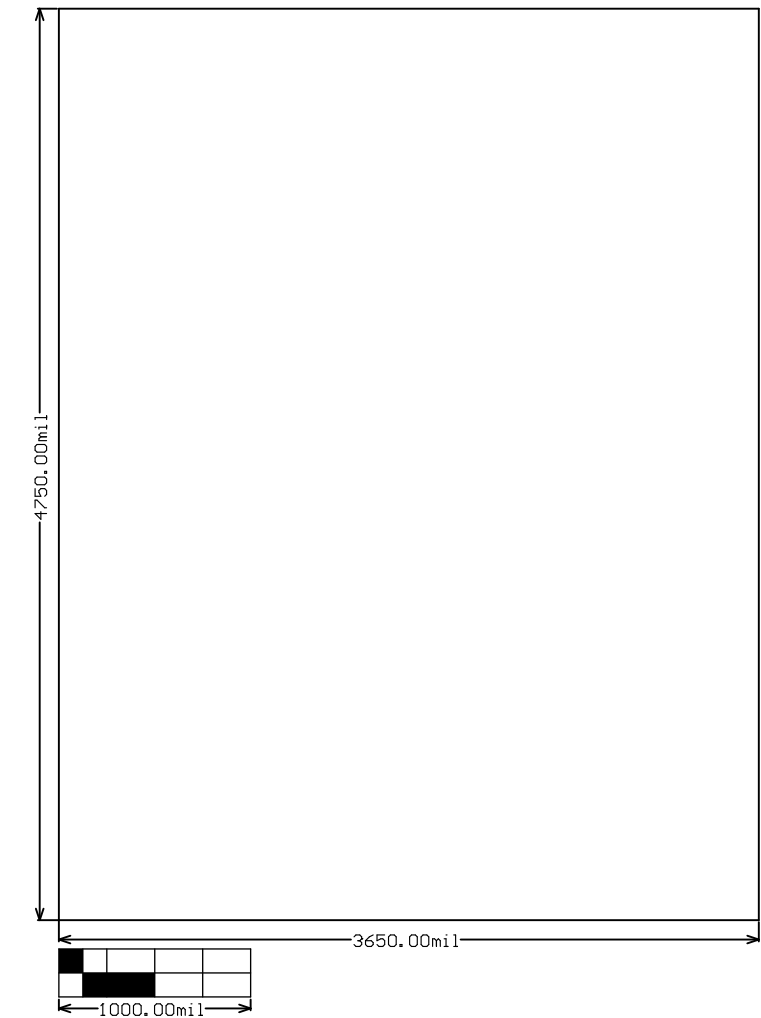
ALL ARTWORK VIEWED FROM TOP SIDE	BOARD #: MD067	REV: A	SUN REV: 801e70aabbbc8cd275686870f7b9ca45777b2a15 [Locally Modified]
LAYER NAME = Bottom Overlay	TID #: N/A		
PLOT NAME = Bottom Overlay	GENERATED : 9/20/2022 4:00:16 PM		TEXAS INSTRUMENTS



Symbol	Quantity	Finished Hole Size	Plated	Hole Type	Drill Layer Pair	Hole Tolerance
▽	8	7.87mil (0.200mm)	PTH	Round	Top Layer - Bottom Layer	±3.94mil
●	964	10.00mil (0.254mm)	PTH	Round	Top Layer - Bottom Layer	
□	6	23.62mil (0.600mm)	PTH	Round	Top Layer - Bottom Layer	
◇	20	33.47mil (0.850mm)	PTH	Round	Top Layer - Bottom Layer	
✱	94	40.00mil (1.016mm)	PTH	Round	Top Layer - Bottom Layer	
▽	8	51.18mil (1.300mm)	PTH	Round	Top Layer - Bottom Layer	
■	5	51.18mil (1.300mm)	PTH	Round	Top Layer - Bottom Layer	
○	4	125.98mil (3.200mm)	PTH	Round	Top Layer - Bottom Layer	
⊗	2	23.62mil (0.600mm)	PTH	Slot	Top Layer - Bottom Layer	
1111 Total						

Slot definitions : Routed Path Length = Calculated from tool start centre position to tool end centre position.
Hole Length = Routed Path Length + Tool Size = Slot length as defined in the PCB layout

ALL ARTWORK VIEWED FROM TOP SIDE	BOARD #: MD067	REV: A	SUN REV: 801e70aabbbc8cd275686870f7b9ca45777b2a15 [Locally Modified]
LAYER NAME = Drill Drawing	TID #: N/A		
PLOT NAME = Drill Drawing	GENERATED : 9/20/2022 4:00:16 PM		TEXAS INSTRUMENTS



ALL ARTWORK VIEWED FROM TOP SIDE	BOARD #: MD067	REV: A	SUN REV: 801e70aabbbc8cd275686870f7b9ca45777b2a15 [Locally Modified]
LAYER NAME = M2 Board Dimensions	TID #: N/A		
PLOT NAME = Board Dimensions	GENERATED : 9/20/2022 4:00:18 PM		TEXAS INSTRUMENTS