

TI Designs: TIDA-01521

适用于中央高位刹车灯 (CHMSL) 的汽车用线性 LED 驱动器参考设计



说明

此参考设计详细介绍了一款用于驱动中央高位刹车灯 (CHMSL) 发光二极管 (LED) 灯串的高度集成式解决方案，它包含停车灯和倒车灯。每个灯均能够通过向其电源线供电的情况下独立工作。该设计使用了三个符合汽车标准的线性 LED 驱动器 (TPS92610-Q1)，从而减少物料清单数量并实现功能丰富的解决方案。

为展示该性能，本设计指南还提供了数个测试结果。

资源

[TIDA-01521](#)

设计文件夹

[TPS92610-Q1](#)

产品文件夹



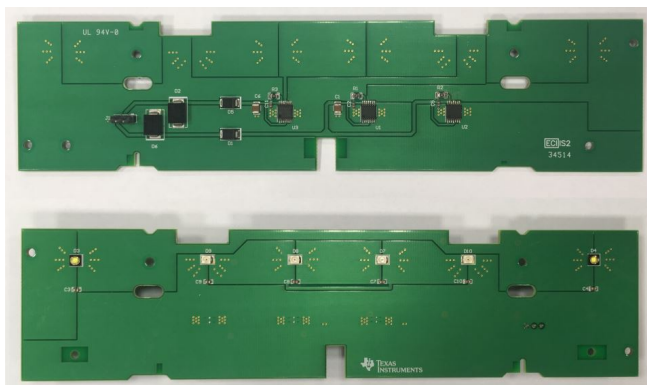
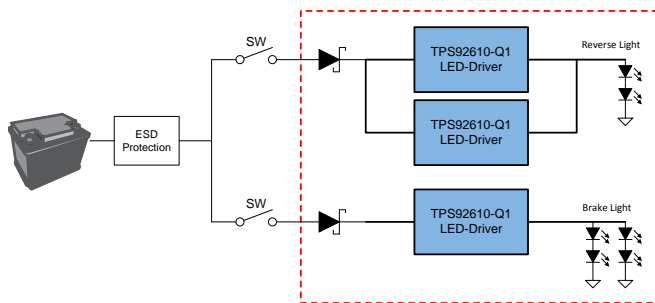
咨询我们的 E2E 专家

特性

- 低物料清单 (BOM) 数量
- 宽输入电压范围
- 高集成度解决方案
- 电池反向保护
- 可选诊断 特性
- 高精度电流调节

标准

- 车外照明 - 后灯



该 TI 参考设计末尾的重要声明表述了授权使用、知识产权问题和其他重要的免责声明和信息。

1 System Description

The center high-mounted stop lamp (CHMSL) is mounted higher than the left and right stop lamps in a vehicle and is essential for providing a warning signal to drivers when their view of the left and right stop lamps is blocked. The CHMSL is similarly known as the "third brake light". The device also provides a redundant stop light signal in the case of a stop lamp malfunction. Some vehicles, such as pick-up trucks, feature a reverse light integrated in the CHMSL in addition to the brake light function.

The drive circuit for the LEDs in a CHMSL application is often realized in a discrete way by using low-side bipolar junction transistor (BJTs) circuits, which results in a high component count.

The TIDA-01521 reference design details a highly integrated solution for driving LEDs in a CHMSL, which includes brake and reverse lights. Each light is capable of independent function by applying power to its supply line. The design uses three automotive-rated linear LED drivers (TPS92610-Q1) to obtain a low BOM count yet feature-rich solution. The design also includes protection features against load dump conditions and reverse battery conditions while simultaneously maintaining a small solution size.

1.1 Key System Specifications

表 1. Key System Specifications

PARAMETER	SPECIFICATIONS
DC input voltage range	9 V to 16 V
Output current reverse light	240 mA
Output current brake light	90 mA
Maximum ambient temperature	85°C

2 System Overview

2.1 Block Diagram

图 1 shows the block diagram of the TIDA-01521 design that comprises the following main components:

- Two TPS92610-Q1 LED drivers for reverse light
- One TPS92610-Q1 LED driver for brake light
- LEDs for reverse and brake light
- Protection diodes

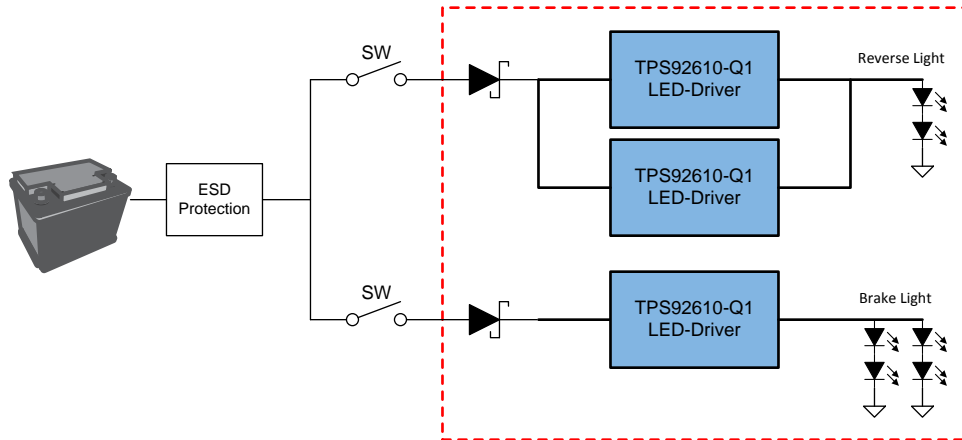
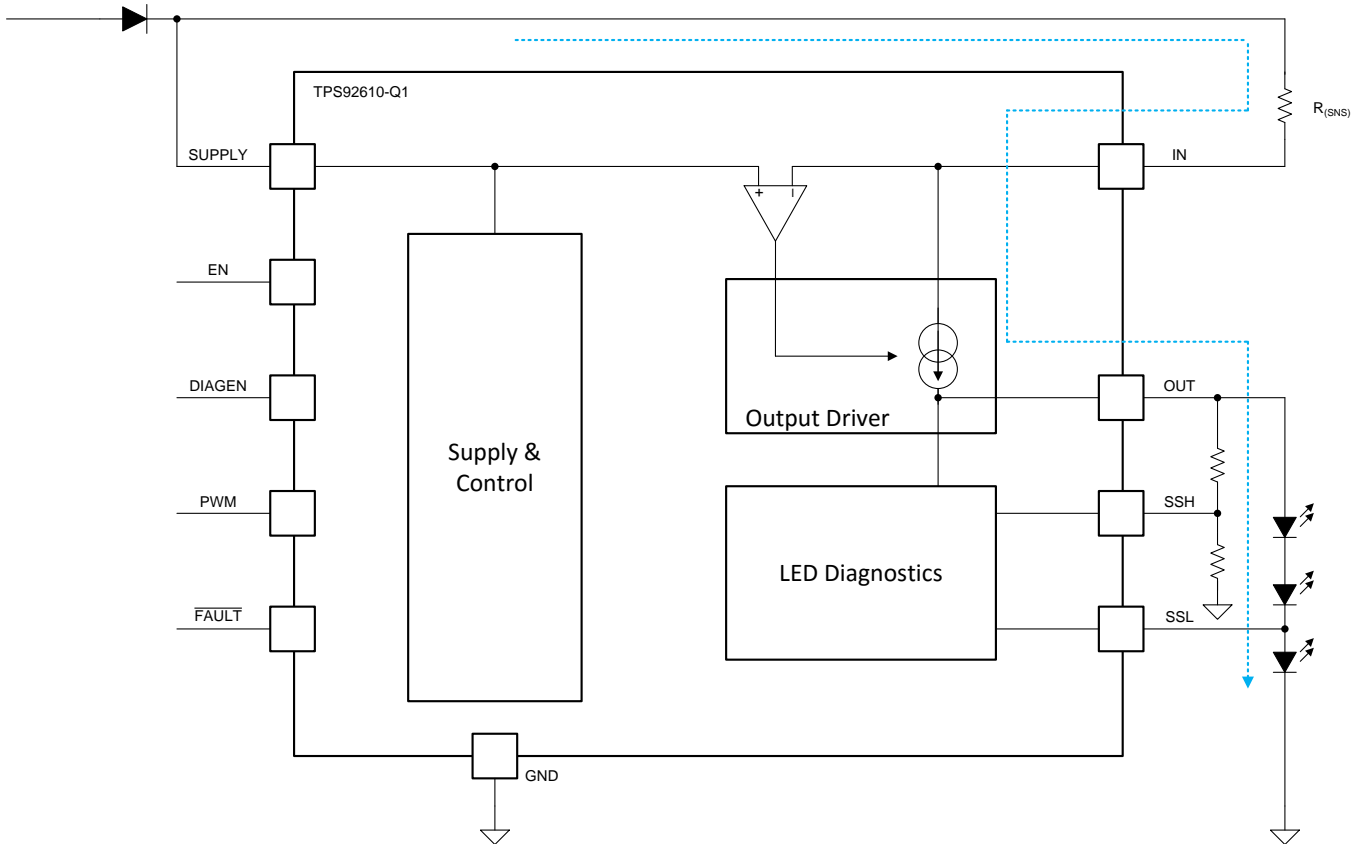


图 1. TIDA-01521 Block Diagram

2.2 Highlighted Products

2.2.1 TPS92610-Q1

The TPS92610-Q1 device is a simple, single-channel, high-side LED driver operating from an automotive car battery. The device is a simple and elegant solution for delivering constant current to a single LED string with a full LED diagnostic. 图 2 shows the functional block diagram of the TPS92610-Q1.



Copyright ©2017, Texas Instruments Incorporated

图 2. TPS92610-Q1 Functional Block Diagram

2.3 System Design Theory

One of the more commonplace methods for implementing LED driver circuits in a CHMSL application in a discrete way is to use low-side bipolar junction transistor (BJTs) circuits, which results in a high component count. The primary goal of this reference design is to make a low BOM count, compact solution for driving brake and reverse lights by using three TPS92610-Q1 linear LED drivers. The following subsections provide details on the design process.

图 3 shows the physical design in operation after placing it in a CHMSL plastic housing for real applications.



图 3. TIDA-01521 Operation in CHMSL Housing

2.3.1 PCB and Form Factor

The design uses a two-layer printed-circuit board (PCB) with 1 oz of copper where the integrated circuits (ICs) and diodes are placed on the bottom layer and the LEDs are placed on the top layer. The board dimensions are 210 mm × 51 mm. 图 4 and 图 5 show a three-dimensional (3-D) rendering of the PCB.

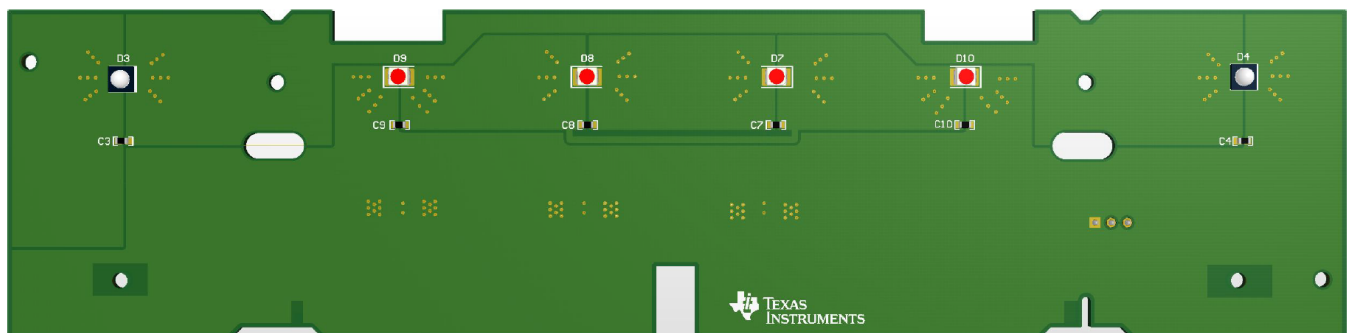


图 4. 3-D Render of TIDA-01521 PCB (Top View)

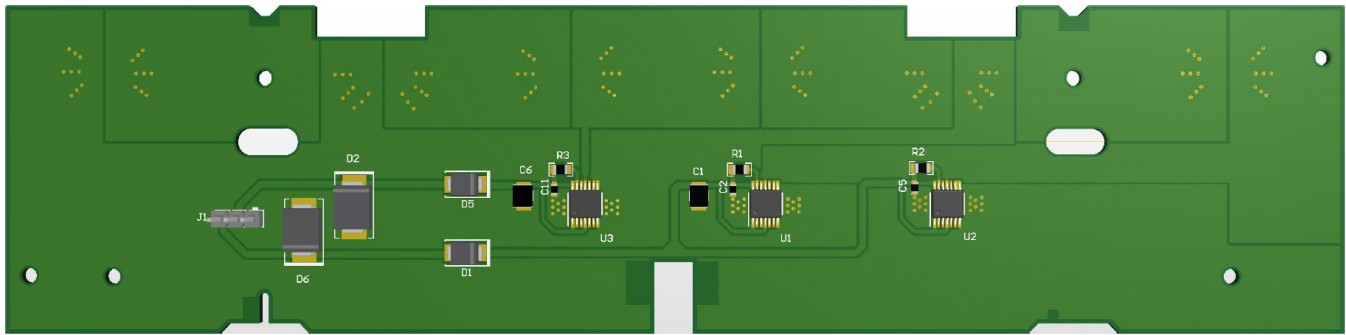


图 5. 3-D Render of TIDA-01521 PCB (Bottom View)

2.3.2 LEDs

This design uses white LEDs from OSRAM (OSLON Black Series - LUW H9GP.CE) for the reverse light with a typical forward voltage of 3 V at a 100-mA forward current. The brake light uses red LEDs (VLMR334BACB) with a typical forward voltage of 2.1 V at a 45-mA forward current.

2.3.3 Input Protection

The design integrates reverse battery protection as well as transient protection. Reverse battery protection is required in the electronic subsystems of a vehicle and is implemented in this design by using Schottky diodes on the inputs. Transient voltage suppression (TVS) diodes are placed on the supply inputs of the system to protect against both positive- and negative-going transients.

2.3.4 Brake Light

The brake light consists of two LED strings where each string is based on two red LEDs in series. To drive these brake light LEDs, this design uses one TPS92610-Q1 LED driver. The total LED driver current is set to 90 mA so that each LED string takes 45 mA.

表 2 lists the default design specifications for the brake light.

表 2. Brake Light Design Specifications

DESIGN PARAMETERS	SPECIFICATION
DC input voltage range	9 V to 16 V
Total output current	90 mA
LED strings	Two
LEDs per string	Two

图 6 shows the default schematic of the brake light circuit for this reference design.

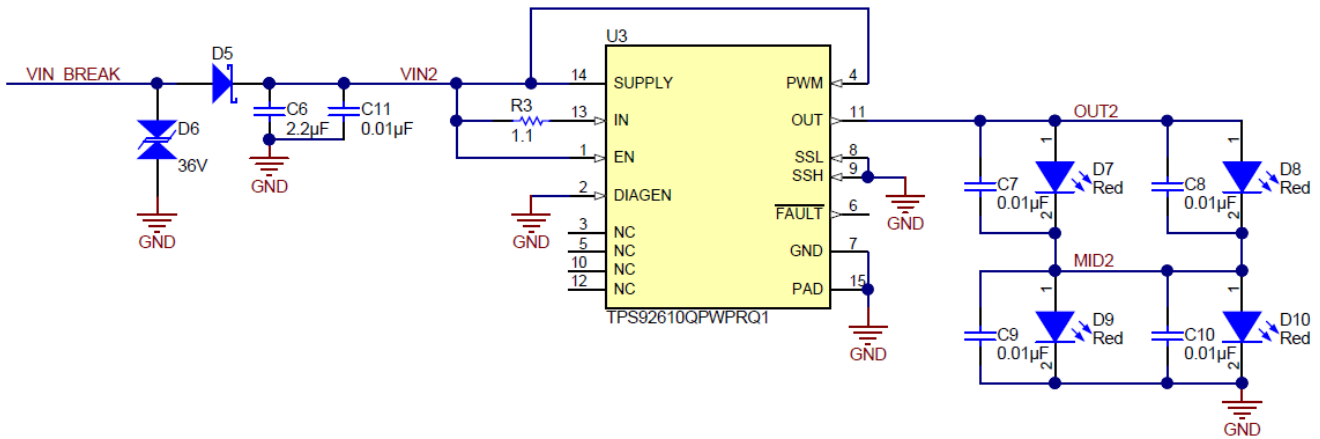


图 6. Brake Light Schematic

Diode D5 is for reverse protection whereas D6 is used for transient protection. Input capacitors C6 and C11 are placed to provide a stable supply voltage. The output current can be set by an external resistor, which the TPS92610-Q1 data sheet describes in further detail. [公式 1](#) calculates the resistor value to provide the required current level of 90 mA. A resistor value of 1.1 Ω is used.

$$R3 = \frac{V_{CS_REG}}{I_{OUT}} = \frac{98 \text{ mV}}{90 \text{ mA}} = 1.09 \Omega \quad (1)$$

where,

- R_3 is the sense resistor to program output current,
- V_{CS_REG} is the sense-resistor regulation voltage (typically 98 mV),
- I_{OUT} is the LED driver output current.

The midpoint of the four LEDs are connected to ensure that three LEDs continue working if one LED fails to open. Capacitors C7, C8, C9, and C10, which are in parallel to the LEDs, are used for noise filtering.

2.3.5 Reverse Light

The reverse light consists of one LED string with two white LEDs in series. To drive these LEDs, this design uses two TPS92610-Q1 LED drivers in parallel to overcome thermal limitations, which [节 2.3.6](#) addresses further. Each LED driver current is set to 120 mA so the total current through the LED string will be 240 mA.

[表 3](#) shows the default designs specifications for the reverse light.

表 3. Reverse Light Design Specifications

DESIGN PARAMETERS	SPECIFICATION
DC input voltage range	9 V to 16 V
LED driver output current	120 mA
Total output current	240 mA
LED strings	One
LEDs per string	Two

图 7 shows the default schematic of the reverse light circuit for this reference design.

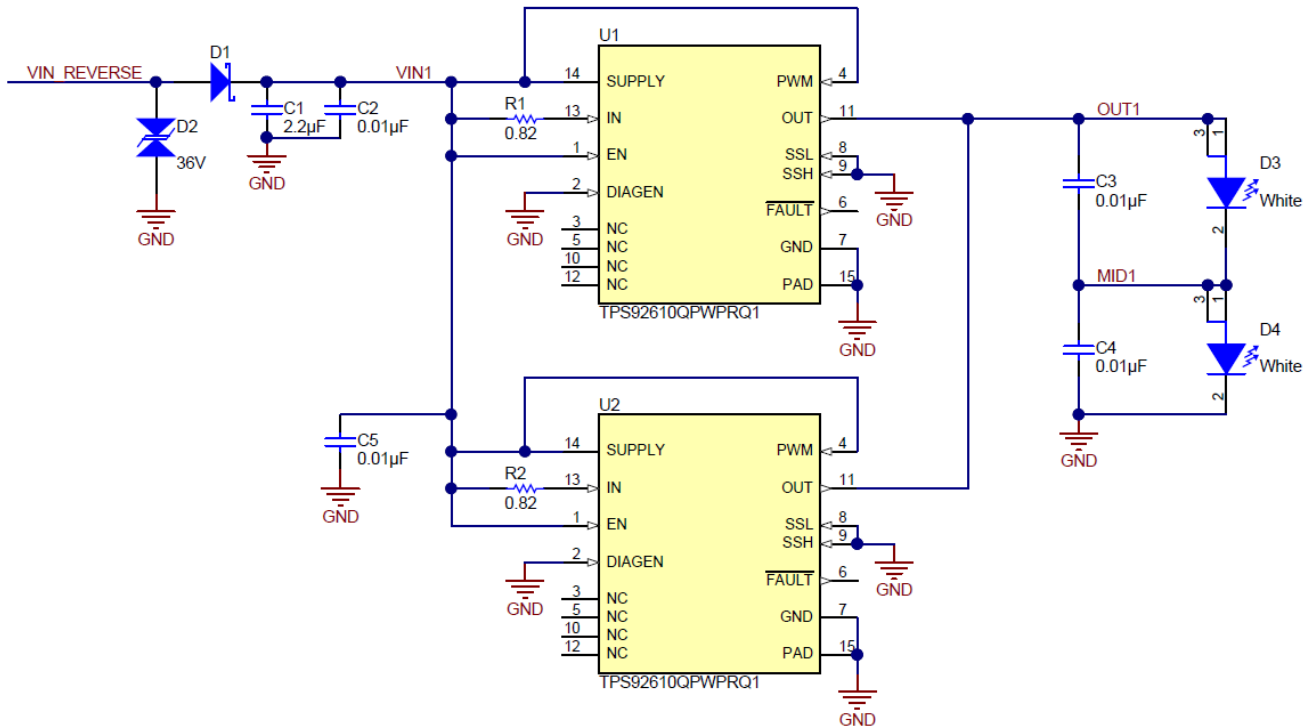


图 7. Reverse Light Schematic

Similar to the brake light, the D1 diode is for reverse protection, whereas D2 is used for transient protection. The placement of input capacitors C1, C2, and C5 provide a stable supply voltage. Capacitors C3 and C4 in parallel to the LEDs are used to filter noise. The output current is set using an external resistor.

公式 1 calculates the resistor values to provide the required current level of 120 mA for each of the two LED drivers. A resistor value of 0.82 Ω is used.

$$R1 = R2 = \frac{V_{CS_REG}}{I_{OUT}} = \frac{98 \text{ mV}}{120 \text{ mA}} = 0.82 \Omega \quad (2)$$

where,

- R1/R2 is the sense resistor to program output current,
- V_{CS_REG} is the sense-resistor regulation voltage (typically 98 mV),
- I_{OUT} is the LED driver output current.

2.3.6 Thermal Considerations

When using the linear LED driver, TPS92610-Q1, thermal performance is one of the most important considerations. Thermal performance limits the power dissipation on the TPS92610-Q1 device in addition to limiting the maximum output current. In linear LED driver applications, the input voltage variation contributes to most of the thermal concerns.

Use [公式 2](#) to calculate the power dissipation of the device.

$$P_D = (V_{IN} - V_D - V_{f_{LED}}) \times I_{LED} \quad (3)$$

where,

- P_D is the total power dissipation of the device,
- V_{IN} is the input voltage,
- V_D is the forward voltage of the reverse protection diode (typically 0.3 V),
- $V_{f_{LED}}$ is the total LED-string forward voltage.

After calculating the power dissipation of the device, use [公式 4](#) to calculate the junction temperature. To be compliant with the IC specification, T_J must remain lower than 150°C in worst-case conditions.

$$T_J = T_A + P_D \times R_{\phi JA} \quad (4)$$

where,

- T_J is the junction temperature of the device,
- T_A is the ambient temperature,
- $R_{\phi JA}$ is the junction-to-ambient thermal resistance.

The $R_{\phi JA}$ is available for look-up in each data sheet of the device, but note that this value is typically based on the JEDEC standard. $R_{\phi JA}$ is a measure of the thermal performance of an IC package mounted on a specific PCB. For additional information, see [Semiconductor and IC Package Thermal Metrics](#) and [How to Calculate TPS92630-Q1 Maximum Output Current for Automotive Exterior Lighting Applications](#).

For the purposes of this reference design, the $R_{\phi JA}$ values listed in [表 4](#) and [表 5](#) are based on thermal simulations. The $R_{\phi JA}$ values of the ICs are slightly different due to how they influence each other on the PCB.

[表 4](#) shows the calculated results with an input voltage of 12-V and an ambient temperature of 25°C and 85°C.

表 4. Thermal Calculation Results ($V_{IN} = 12$ V)

PARAMETER	LED DRIVER U3 (BRAKE LIGHT 90 mA)	LED DRIVER U1 (REVERSE LIGHT 120 mA)	LED DRIVER U2 (REVERSE LIGHT 120 mA)
P_D (12 V_{IN})	0.68 W	0.68 W	0.68 W
$T_A = 25^\circ\text{C}$			
$R_{\phi JA}$	59.7°C/W	65.2°C/W	58.5°C/W
T_J	65°C	70°C	65°C
$T_A = 85^\circ\text{C}$			
$R_{\phi JA}$	54.4°C/W	58.9°C/W	52.9°C/W
T_J	122°C	125°C	121°C

表 5 shows the calculated results with an input voltage of 16-V and an ambient temperature of 25°C and 85°C. Note that the worst-case condition is with a 16-V input voltage at 85°C ambient temperature.

表 5. Thermal Calculation Results ($V_{IN} = 16\text{ V}$)

PARAMETER	LED DRIVER U3 (BRAKE LIGHT 90 mA)	LED DRIVER U1 (REVERSE LIGHT 120 mA)	LED DRIVER U2 (REVERSE LIGHT 120 mA)
P_D (16 V_{IN})	1.04 W	1.16 W	1.16 W
$T_A = 25^\circ\text{C}$			
$R_{\theta JA}$	59.3°C/W	63.1°C/W	57.°C/W
T_J	86°C	99°C	91°C
$T_A = 85^\circ\text{C}$			
$R_{\theta JA}$	54.3°C/W	57.6°C/W	52.2°C/W
T_J	141°C	152°C	146°C

The calculated worst-case results in 表 5 show that the maximum junction temperature T_J is slightly above 150°C. To further improve the thermal performance of the design, implement the following items:

- Increase copper thickness to 2 oz
- Increase distance between the ICs
- Use a silicon diode to obtain a higher voltage drop
- Decrease the LED current

For calculating the maximum output current under specific conditions, first use 公式 4 to calculate the maximum power dissipation at a specific ambient temperature. Then use the previous 公式 3 to solve for the current. [How to Calculate TPS92630-Q1 Maximum Output Current for Automotive Exterior Lighting Applications](#) shows an example calculation.

2.3.7 Diagnostic

The TPS92610-Q1 implements full diagnostic features like LED open detection, short detection, single-LED short detection, and fault detection; however, note that this reference design does not implement these functions. For more details, see [TPS92610-Q1 Automotive Single-Channel LED Driver](#).

3 Getting Started Hardware

3.1 Hardware

Connect a 12-V DC power supply to connector J1 to get started with the TIDA-01521 board (see [图 8](#)).

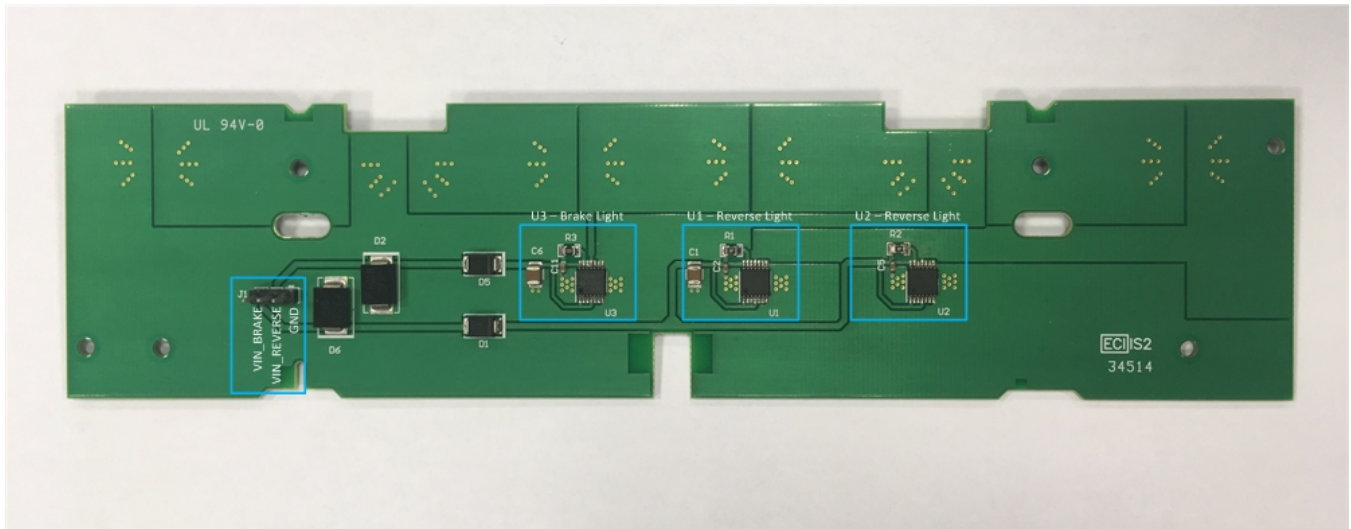


图 8. TIDA-01521 Hardware Setup

4 Testing and Results

4.1 Start-Up

图 9 shows the start-up behavior of the brake light LED driver. The Input voltage source is 12 V.

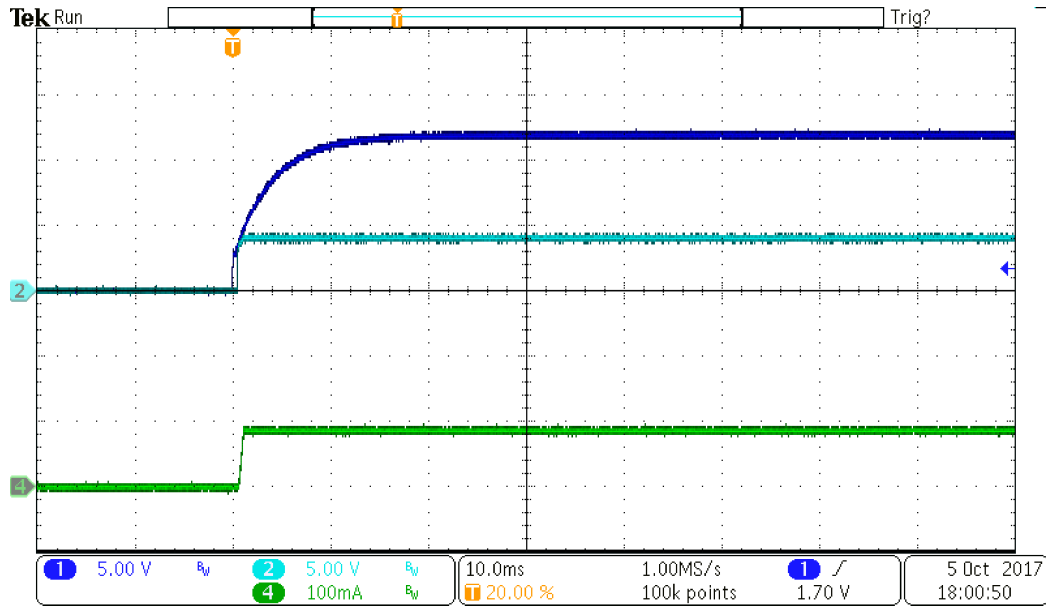


图 9. Start-Up Brake Light
Ch1 = V_{IN} , Ch2 = V_{OUT} , Ch4 = I_{OUT}

图 10 shows the start-up behavior of the reverse light LED drivers. The input voltage source is 12 V.

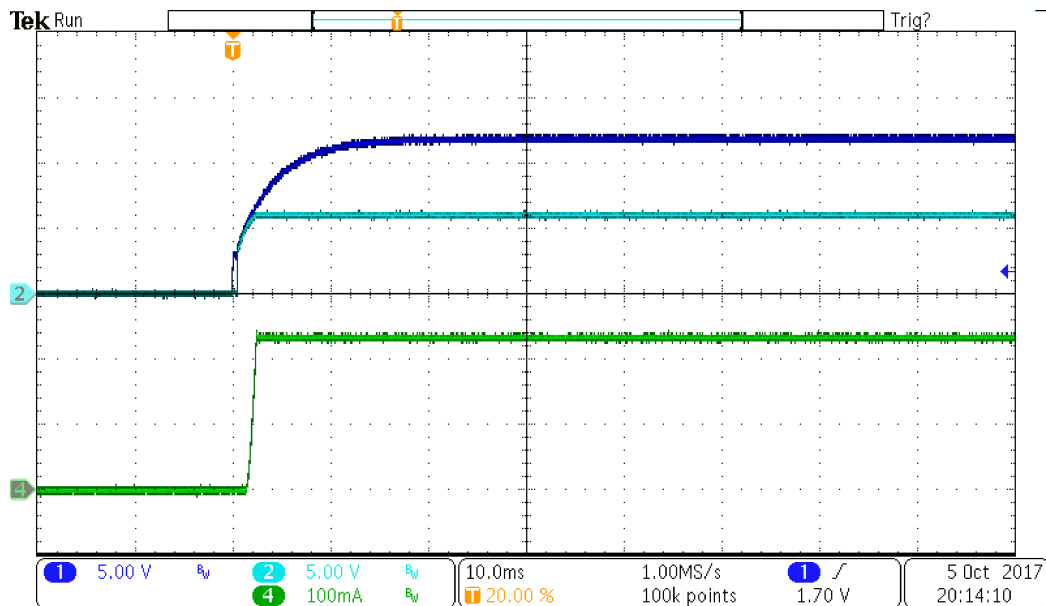


图 10. Start-Up Reverse Light
Ch1 = V_{IN} , Ch2 = V_{OUT} , Ch4 = I_{OUT}

4.2 Thermal Results

The images in this section show the thermal performance of the TIDA-01521 design at an ambient temperature of 25°C. The measured results of the maximum IC temperatures correlate well with the calculated results from 表 4 and 表 5.

图 11 through 图 13 show the maximum temperature at an input voltage of 12 V.

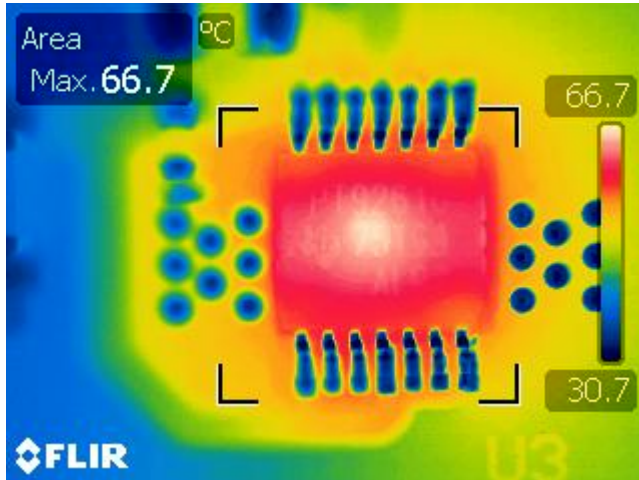


图 11. Thermal Image of LED Driver U3 ($V_{IN} = 12\text{ V}$)

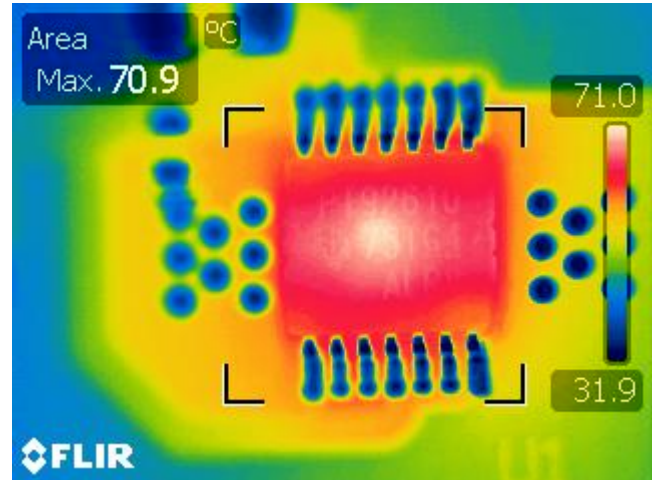


图 12. Thermal Image of LED Driver U1 ($V_{IN} = 12\text{ V}$)

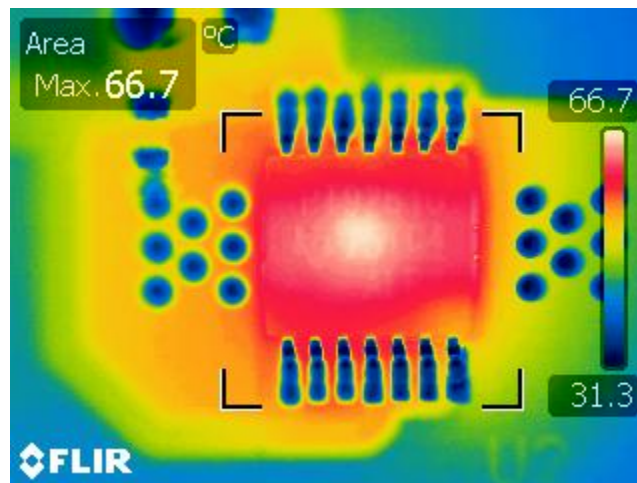


图 13. Thermal Image of LED Driver U2 ($V_{IN} = 12\text{ V}$)

图 14 through 图 16 show the maximum temperature at an input voltage of 16 V.

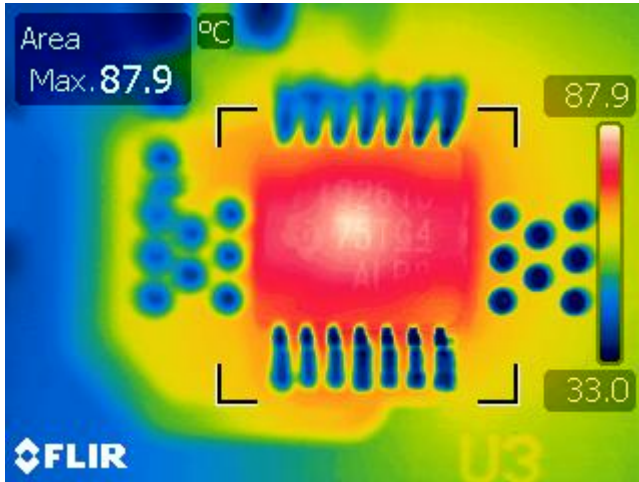


图 14. Thermal Image of LED Driver U3 ($V_{IN} = 16\text{ V}$)

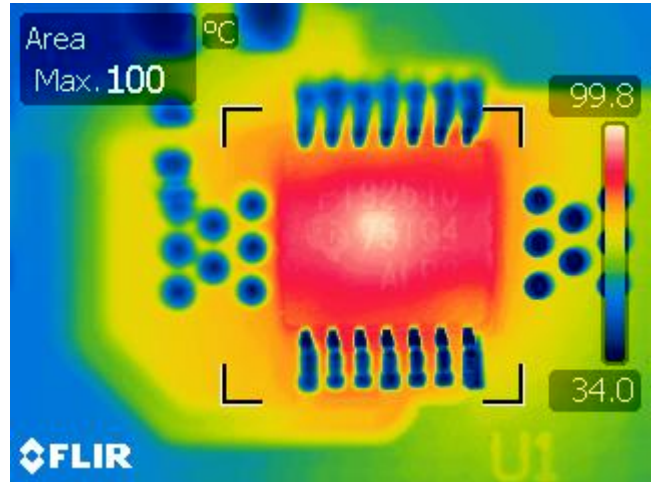


图 15. Thermal Image of LED Driver U1 ($V_{IN} = 16\text{ V}$)

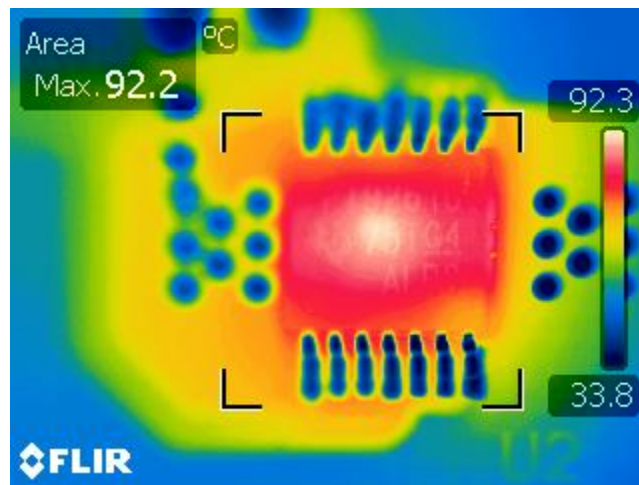


图 16. Thermal Image of LED Driver U2 ($V_{IN} = 16\text{ V}$)

5 Design Files

5.1 Schematics

To download the schematics, see the design files at [TIDA-01521](#).

5.2 Bill of Materials

To download the bill of materials (BOM), see the design files at [TIDA-01521](#).

5.3 PCB Layout Recommendations

To stay within the IC specification and prevent thermal shutdown, T_J must be less than 150°C. If the input voltage is very high, the power dissipation may be large. The TPS92610-Q1 device is available in a 14-pin HTSSOP package, which has good thermal impedance; however, the PCB layout is also very important. A good PCB design is likely to optimize heat transfer, which is absolutely essential for the long-term reliability of the device.

Maximize the copper coverage on the PCB to increase the thermal conductivity of the board, because the major heat-flow path from the package to the ambient is through the copper on the PCB. Maximum copper is extremely important when the design does not include heat sinks attached to the PCB on the other side of the package. Add as many thermal vias as possible directly under the package ground pad to optimize the thermal conductivity of the board.

5.3.1 Layout Prints

To download the layer plots, see the design files at [TIDA-01521](#).

5.4 Altium Project

To download the Altium project files, see the design files at [TIDA-01521](#).

5.5 Gerber Files

To download the Gerber files, see the design files at [TIDA-01521](#).

5.6 Assembly Drawings

To download the assembly drawings, see the design files at [TIDA-01521](#).

6 Related Documentation

1. Texas Instruments, [Semiconductor and IC Package Thermal Metrics](#)
2. Texas Instruments, [How to Calculate TPS92630-Q1 Maximum Output Current for Automotive Exterior Lighting Applications](#)
3. Texas Instruments, [TPS92610-Q1 Automotive Single-Channel LED Driver](#)

6.1 商标

All trademarks are the property of their respective owners.

有关 TI 设计信息和资源的重要通知

德州仪器 (TI) 公司提供的技术、应用或其他设计建议、服务或信息，包括但不限于与评估模块有关的参考设计和材料（总称“TI 资源”），旨在帮助设计人员开发整合了 TI 产品的应用；如果您（个人，或如果是代表贵公司，则为贵公司）以任何方式下载、访问或使用了任何特定的 TI 资源，即表示贵方同意仅为该等目标，按照本通知的条款进行使用。

TI 所提供的 TI 资源，并未扩大或以其他方式修改 TI 对 TI 产品的公开适用的质保及质保免责声明；也未导致 TI 承担任何额外的义务或责任。TI 有权对其 TI 资源进行纠正、增强、改进和其他修改。

您理解并同意，在设计应用时应自行实施独立的分析、评价和判断，且应全权负责并确保应用的安全性，以及您的应用（包括应用中使用的 TI 产品）应符合所有适用的法律法规及其他相关要求。您就您的应用声明，您具备制订和实施下列保障措施所需的一切必要专业知识，能够 (1) 预见故障的危险后果，(2) 监视故障及其后果，以及 (3) 降低可能导致危险的故障几率并采取适当措施。您同意，在使用或分发包含 TI 产品的任何应用前，您将彻底测试该等应用和该等应用所用 TI 产品的功能。除特定 TI 资源的公开文档中明确列出的测试外，TI 未进行任何其他测试。

您只有在为开发包含该等 TI 资源所列 TI 产品的应用时，才被授权使用、复制和修改任何相关单项 TI 资源。但并未依据禁止反言原则或其他法律授予您任何 TI 知识产权的任何其他明示或默示的许可，也未授予您 TI 或第三方的任何技术或知识产权的许可，该等产权包括但不限于任何专利权、版权、屏蔽作品权或与使用 TI 产品或服务的任何整合、机器制作、流程相关的其他知识产权。涉及或参考了第三方产品或服务的信息不构成使用此类产品或服务的许可或与其相关的保证或认可。使用 TI 资源可能需要您向第三方获得对该等第三方专利或其他知识产权的许可。

TI 资源系“按原样”提供。TI 兹免除对 TI 资源及其使用作出所有其他明确或默示的保证或陈述，包括但不限于对准确性或完整性、产权保证、无屡发故障保证，以及适销性、适合特定用途和不侵犯任何第三方知识产权的任何默认保证。

TI 不负责任何申索，包括但不限于因组合产品所致或与之有关的申索，也不为您辩护或赔偿，即使该等产品组合已列于 TI 资源或其他地方。对因 TI 资源或其使用引起或与之有关的任何实际的、直接的、特殊的、附带的、间接的、惩罚性的、偶发的、从属或惩戒性损害赔偿，不管 TI 是否获悉可能会产生上述损害赔偿，TI 概不负责。

您同意向 TI 及其代表全额赔偿因您不遵守本通知条款和条件而引起的任何损害、费用、损失和/或责任。

本通知适用于 TI 资源。另有其他条款适用于某些类型的材料、TI 产品和服务的使用和采购。这些条款包括但不限于适用于 TI 的半导体产品 (<http://www.ti.com/sc/docs/stdterms.htm>)、[评估模块](http://www.ti.com/sc/docs/sampters.htm)和样品 (<http://www.ti.com/sc/docs/sampters.htm>) 的标准条款。

邮寄地址：上海市浦东新区世纪大道 1568 号中建大厦 32 楼，邮政编码：200122
Copyright © 2017 德州仪器半导体技术（上海）有限公司