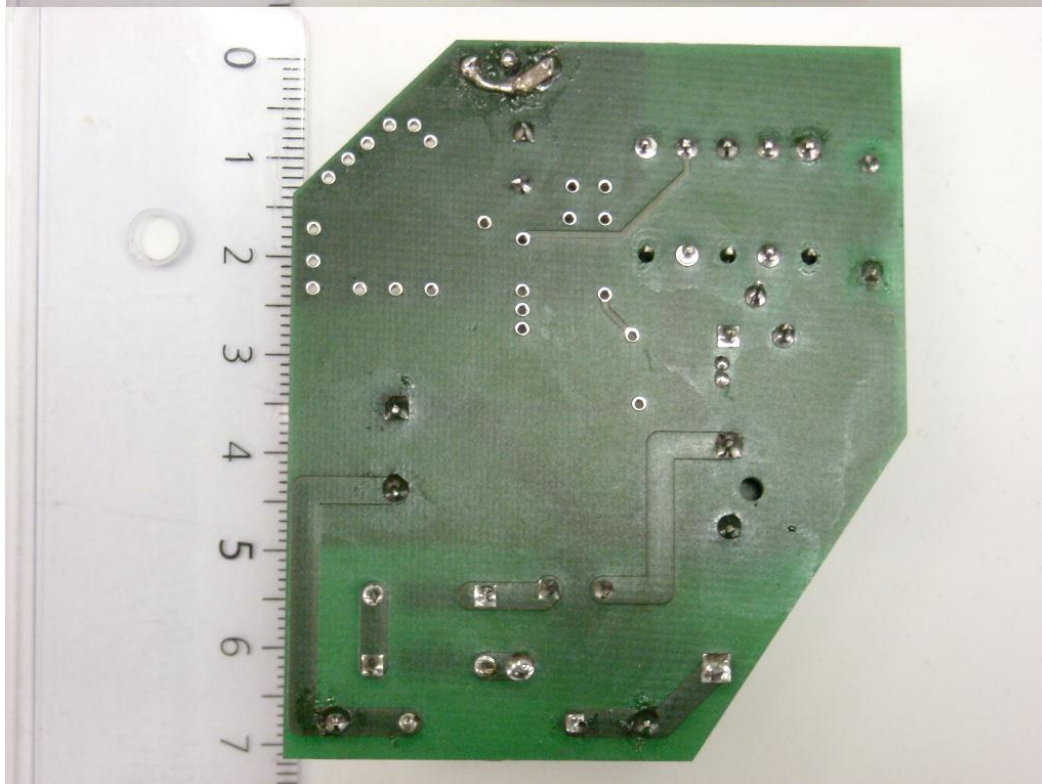
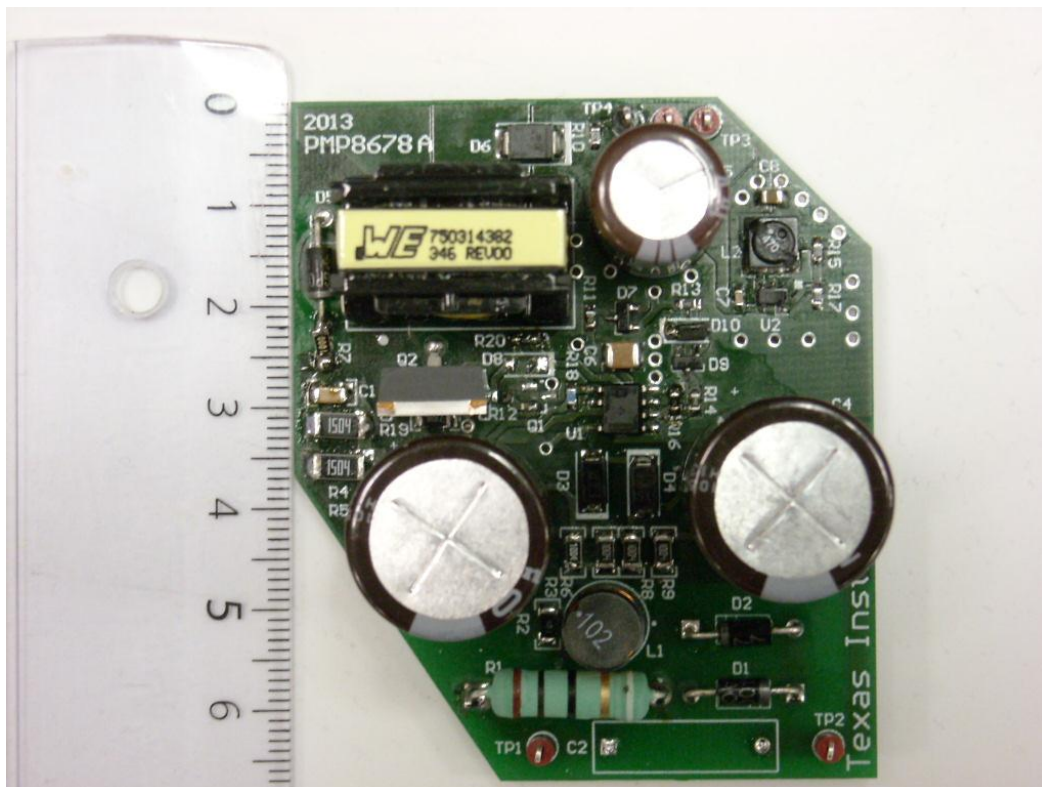
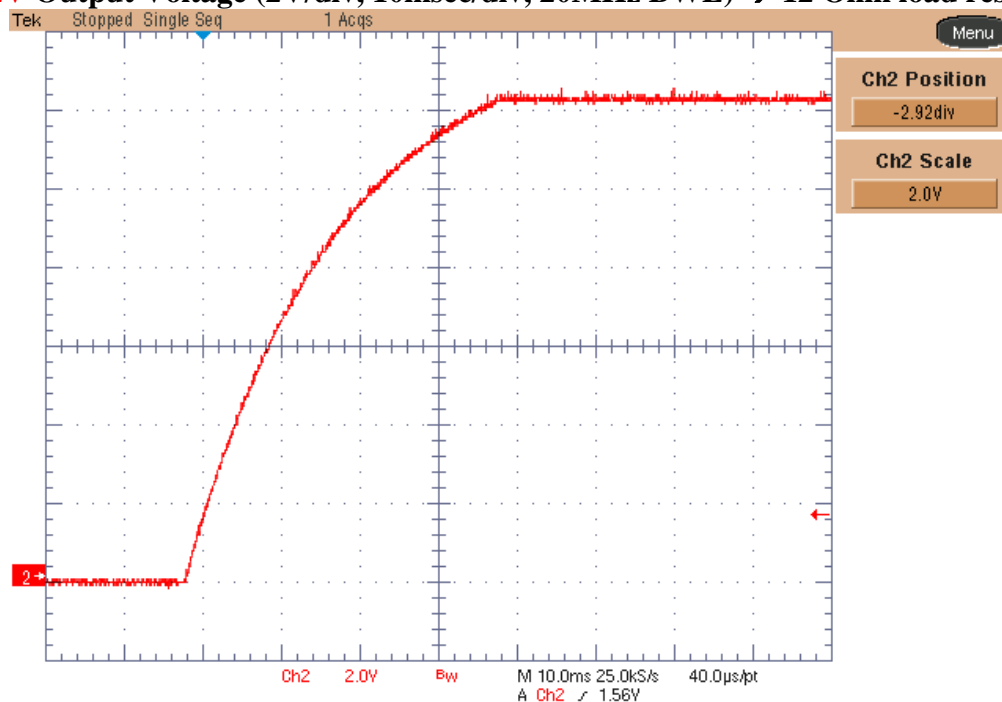


PHOTO OF THE PROTOTYPE

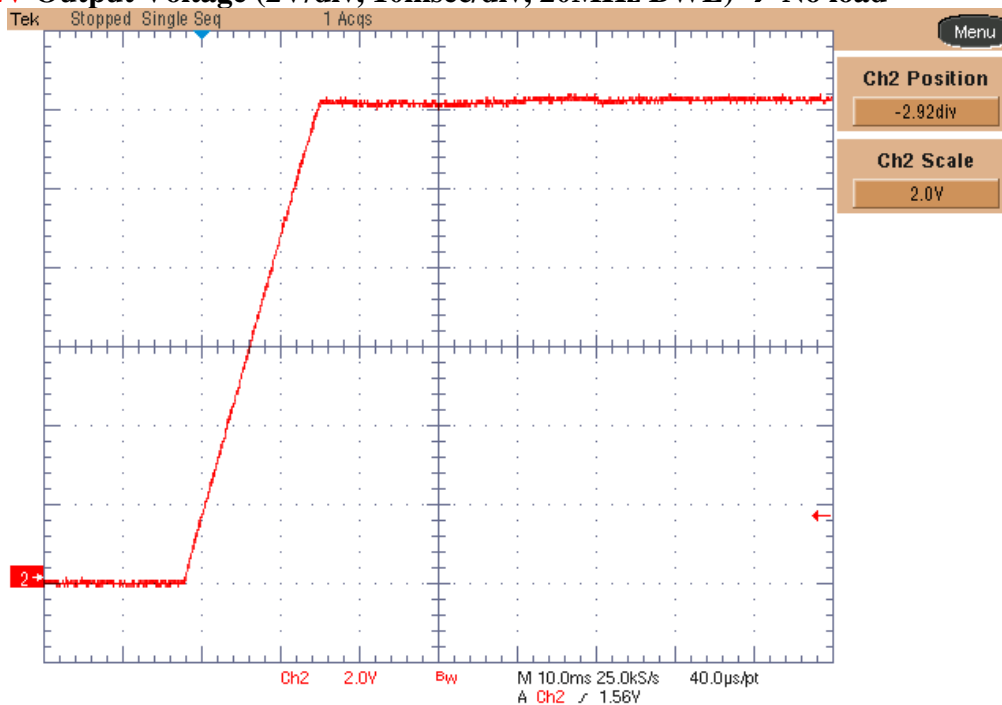
1 Output Voltage at Startup

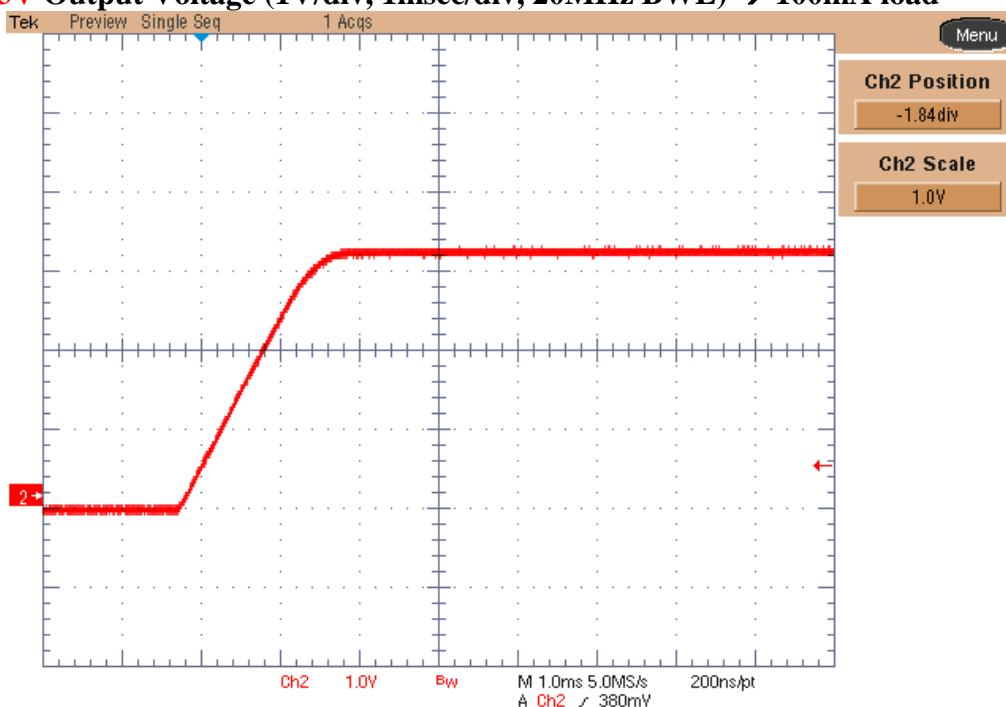
The output voltage ramp-up behavior for the 12V_{out} and 3.3V_{out} is shown in the images below. The input voltage has been set to 320Vdc. The load was a 12 Ohm resistor (equivalent to 1A load) for the top picture and not connected in the bottom one.

Ch.2: 12V Output Voltage (2V/div, 10msec/div, 20MHz BWL) → 12 Ohm load resistor



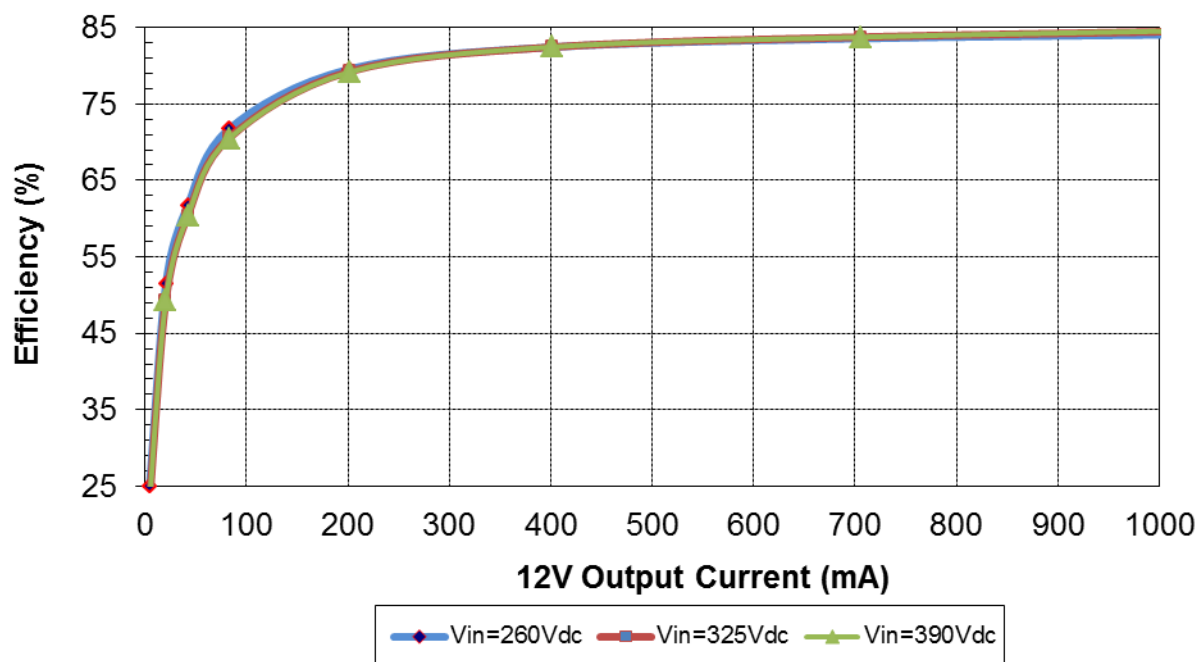
Ch.2: 12V Output Voltage (2V/div, 10msec/div, 20MHz BWL) → No load



Ch.2: 3.3V Output Voltage (1V/div, 1msec/div, 20MHz BWL) → 100mA load


2 Efficiency

The efficiency data are shown in the tables and graphs below. Only the 12Vout has been loaded, therefore the 3.3Vout has been left unconnected. The load has been varied between 0 and 1A. The input voltage has been set to 260Vdc, 325Vdc and 390V (equivalent to the rectified 184Vac, 230Vac and 275Vac).



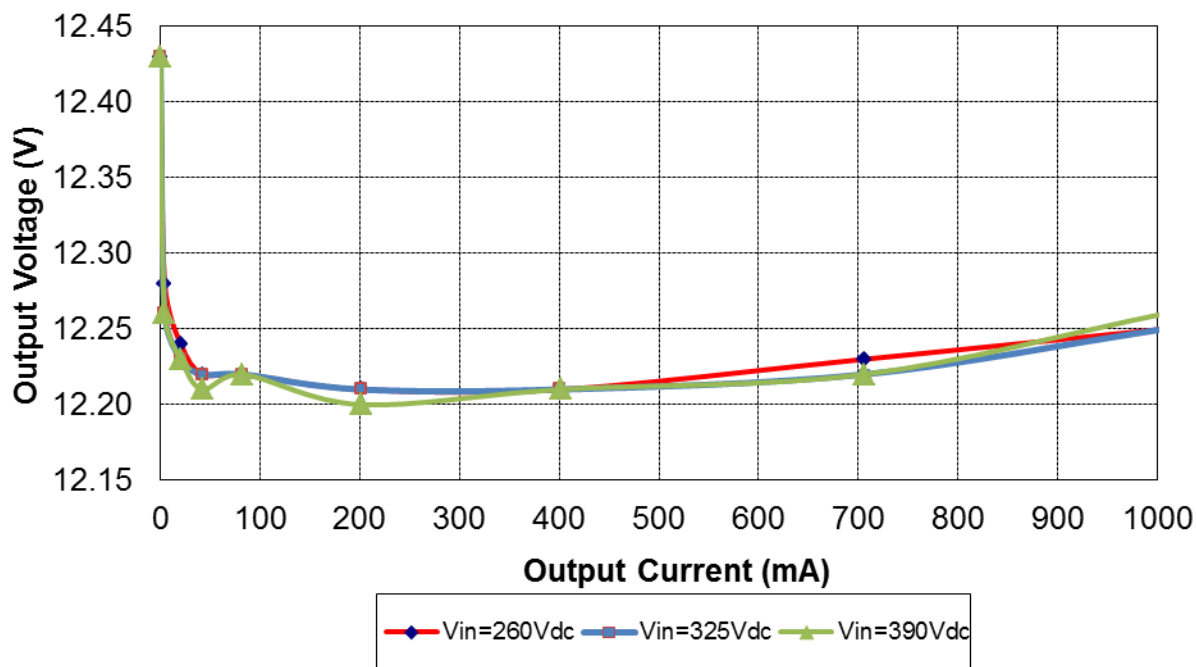
Iout (mA)	Vout (V)	Pout (W)	Iin (mA)	Vin (V)	Pin (W)	Ploss (W)	Eff (%)
0.0	12.43	0.000	0.445	260	0.116	0.116	0.0
4.4	12.28	0.054	0.831	260	0.216	0.162	25.0
20.6	12.24	0.252	1.883	260	0.490	0.237	51.5
42.2	12.22	0.516	3.212	260	0.835	0.319	61.7
82.7	12.22	1.01	5.420	260	1.409	0.399	71.7
201.4	12.21	2.46	11.89	260	3.091	0.632	79.5
401.1	12.21	4.90	22.85	260	5.941	1.044	82.4
706.2	12.23	8.64	39.76	260	10.338	1.701	83.5
1006	12.25	12.32	56.4	260	14.664	2.341	84.0

Iout (mA)	Vout (V)	Pout (W)	Iin (mA)	Vin (V)	Pin (W)	Ploss (W)	Eff (%)
0.0	12.43	0.000	0.339	325	0.110	0.110	0.0
4.4	12.26	0.054	0.719	325	0.234	0.180	23.1
20.5	12.23	0.251	1.564	325	0.508	0.258	49.3
42.2	12.22	0.516	2.626	325	0.853	0.338	60.4
82.7	12.22	1.01	4.410	325	1.433	0.423	70.5
201.4	12.21	2.46	9.55	325	3.104	0.645	79.2
401.1	12.21	4.90	18.28	325	5.941	1.044	82.4
706.2	12.22	8.63	31.71	325	10.306	1.676	83.7
1006	12.25	12.32	44.9	325	14.593	2.269	84.5

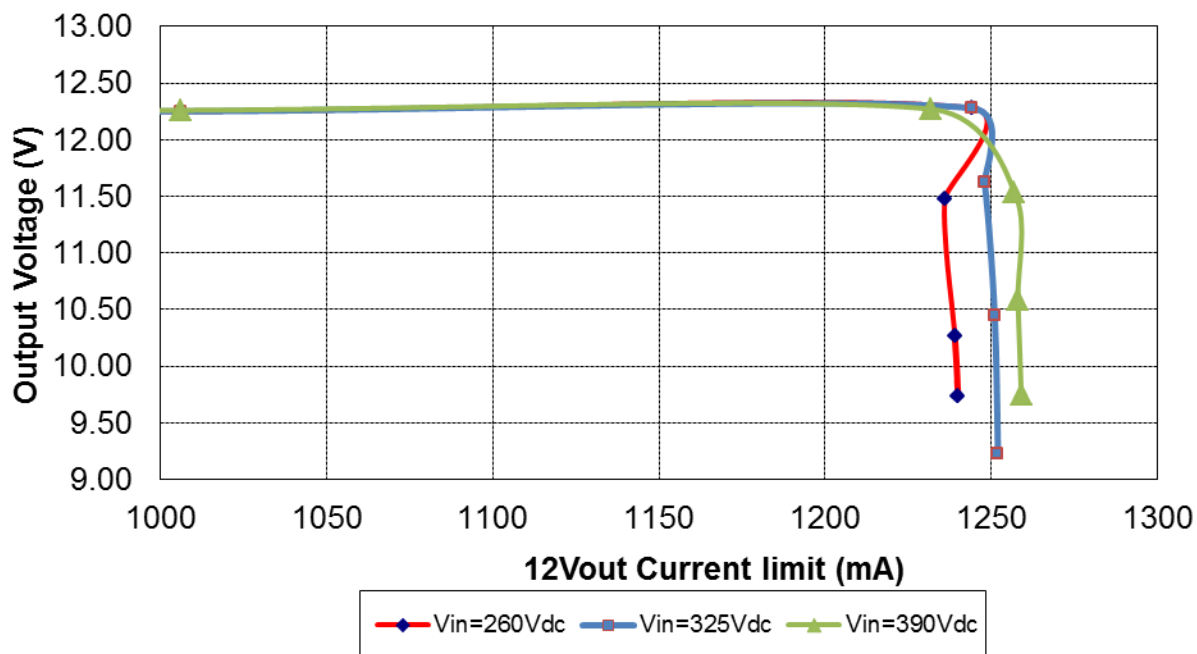
Iout (mA)	Vout (V)	Pout (W)	Iin (mA)	Vin (V)	Pin (W)	Ploss (W)	Eff (%)
0.0	12.43	0.000	0.339	325	0.110	0.110	0.0
4.4	12.26	0.054	0.719	325	0.234	0.180	23.1
20.5	12.23	0.251	1.564	325	0.508	0.258	49.3
42.2	12.21	0.515	2.626	325	0.853	0.338	60.4
82.6	12.22	1.01	4.410	325	1.433	0.424	70.4
201.4	12.20	2.46	9.55	325	3.104	0.647	79.2
401.2	12.21	4.90	18.28	325	5.941	1.042	82.5
706.2	12.22	8.63	31.71	325	10.306	1.676	83.7
1006	12.26	12.33	44.9	325	14.593	2.259	84.5

3 12V Output Voltage Regulation vs. Load

The 12V output voltage variation as function of output current is shown below.



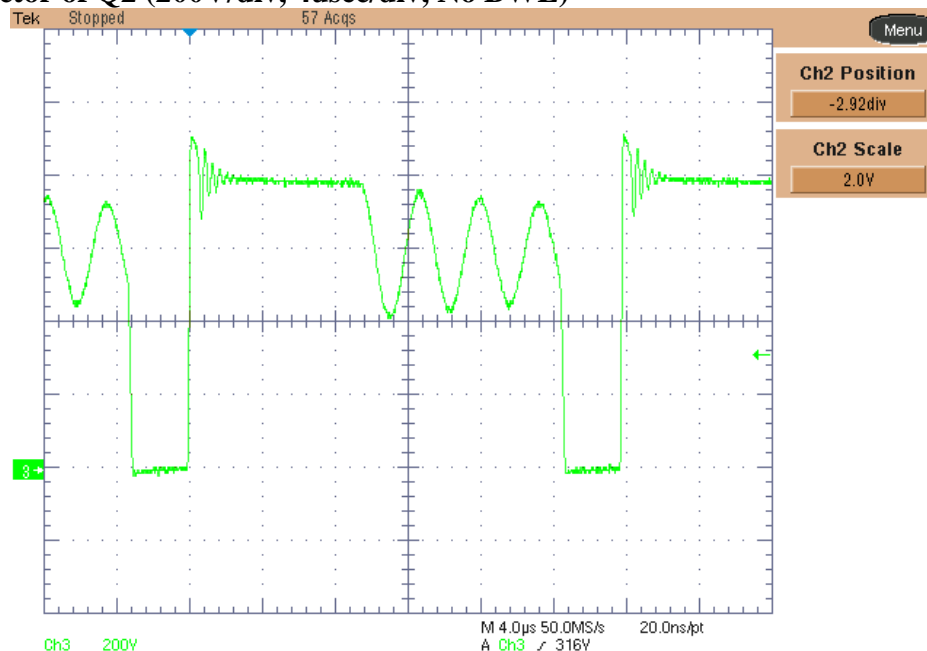
After reaching 1.24A, the output V-I characteristic turned into a constant current generator, as shown in the following picture:



4 Switching Node Waveforms

The image below shows the voltage on switch node collector of Q2 at 600Vdc input voltage and full load conditions.

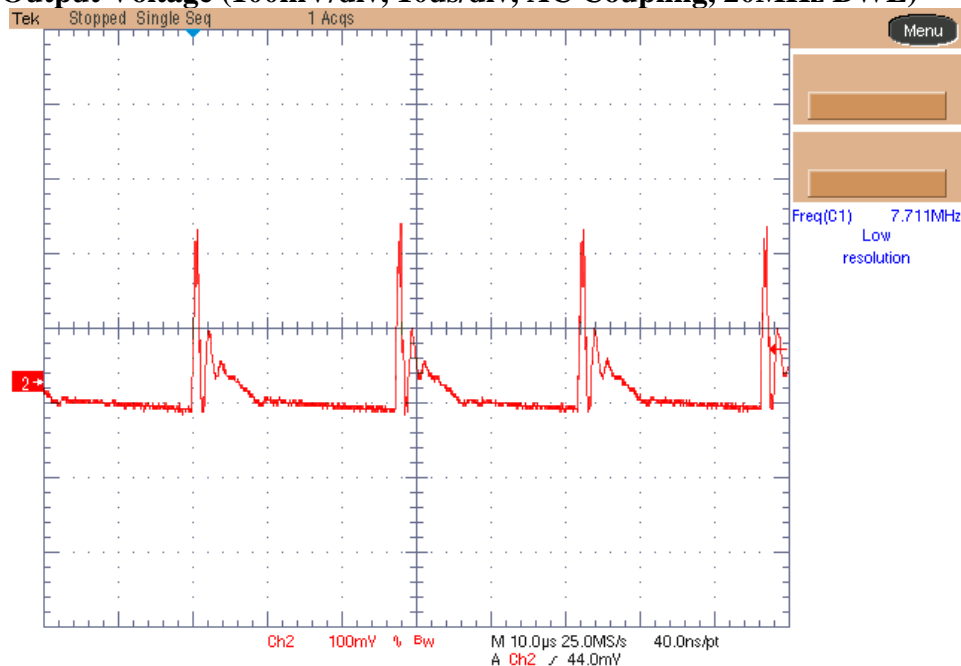
Ch3: Collector of Q2 (200V/div, 4usec/div, No BWL)

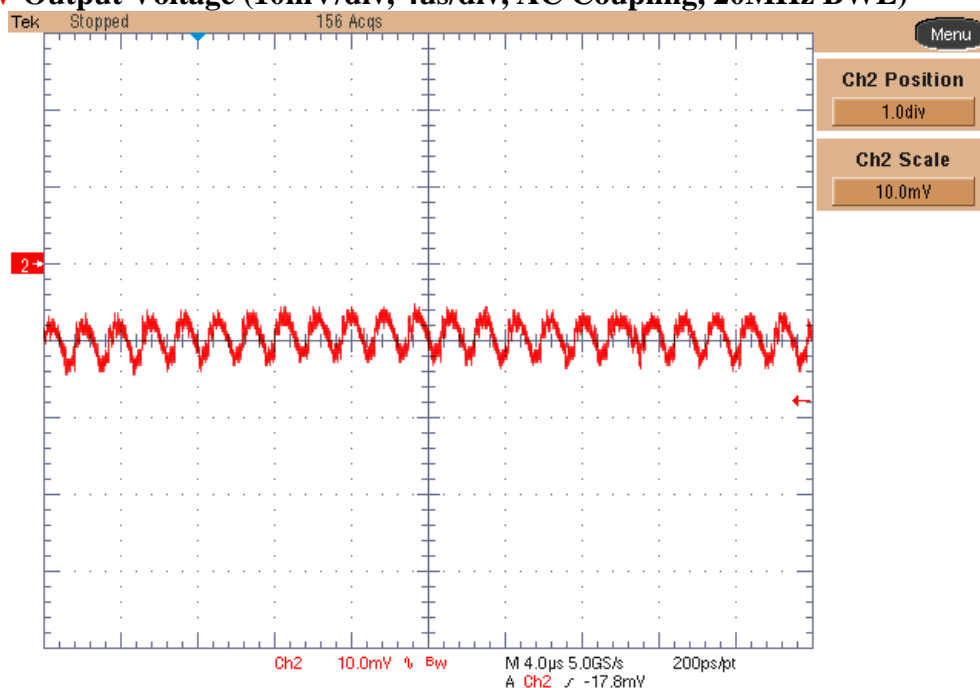


5 Output Ripple Voltage

The output ripple voltage on the 12Vout and 3.3Vout, @ 320Vdc input voltage, is shown in the pictures below.

Ch2: 12V Output Voltage (100mV/div, 10us/div, AC Coupling, 20MHz BWL)

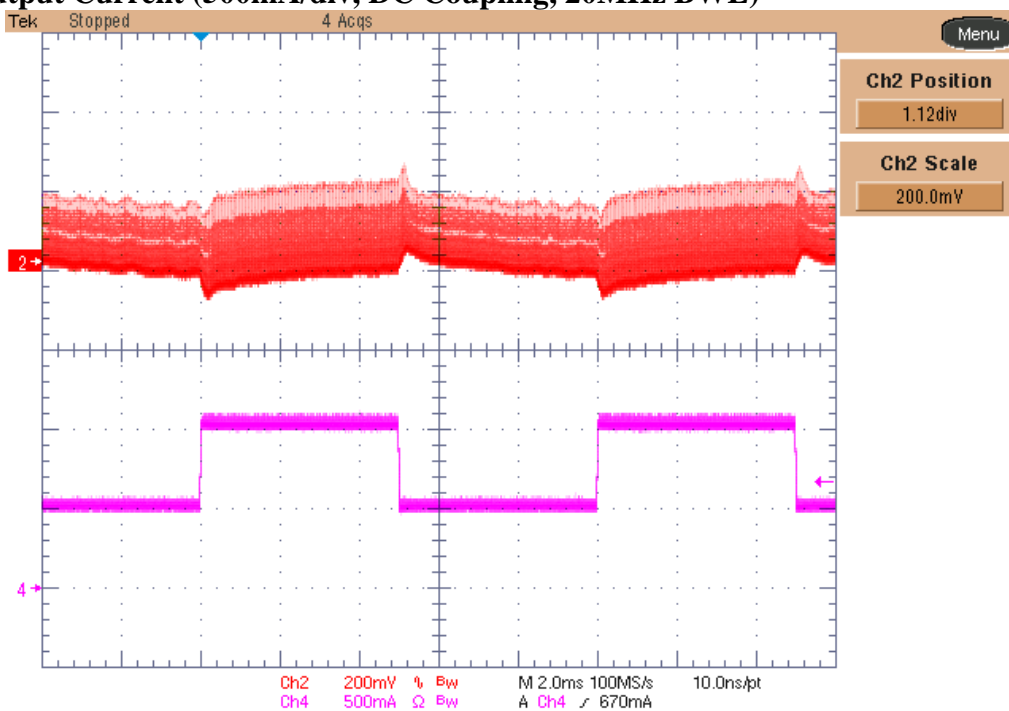


Ch2: 3.3V Output Voltage (10mV/div, 4us/div, AC Coupling, 20MHz BWL)**6 Transient Response on 12Vout**

The 12V output voltage variation versus transient load is shown below. The input voltage has been set to 320Vdc and the load switched between 500mA and 1A (50%...100% of load).

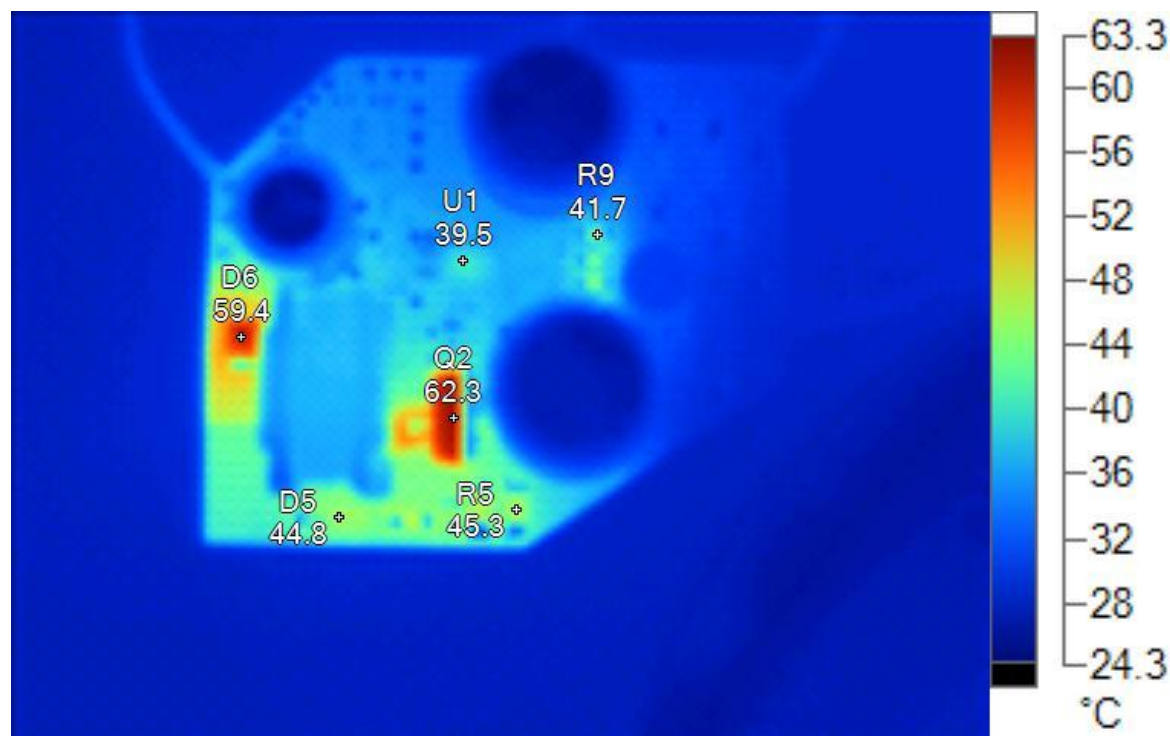
Ch2: 12V Output Voltage (200mV/div, 2msec/div, AC Coupling, 20MHz BWL)

Ch4: Output Current (500mA/div, DC Coupling, 20MHz BWL)



7 Thermal Analysis

The thermal analysis of the converter shows the temperatures for each component, in the graphs below. The converter has been placed horizontally on the bench without any forced convection. The input voltage was 1KVdc for the upper picture and 320Vdc for the bottom one. Both outputs were fully loaded and the ambient temperature 24C.



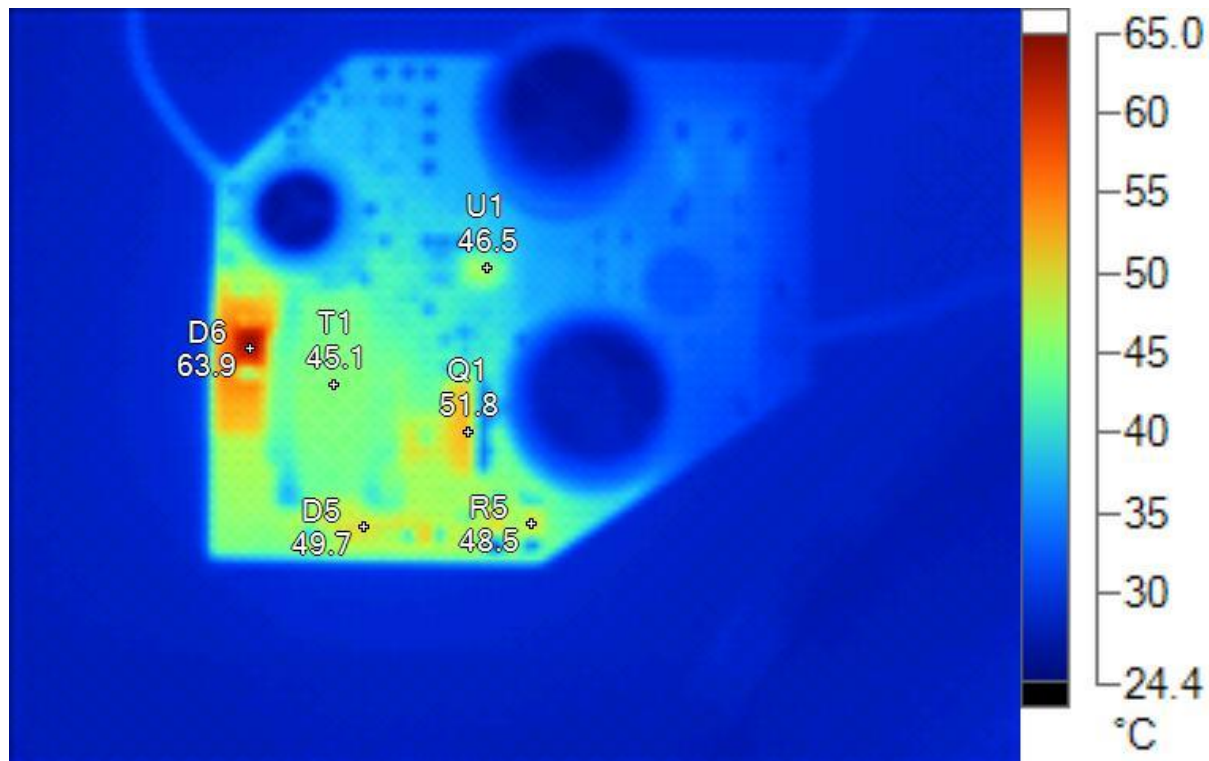
Vin = 1KVdc, Full load

Image Info

Background temperature	24.0°C
Average Temperature	29.9°C
Image Range	25.3°C to 62.3°C
Camera Model	Ti40FT
Camera Manufacturer	Fluke
Image Time	12/6/2013 6:22:50 PM

Main Image Markers

Name	Temperature
D6	59.4°C
Q2	62.3°C
D5	44.8°C
R5	45.3°C
U1	39.5°C
R9	41.7°C



Vin = 320Vdc, Full load

Image Info

Background temperature	24.0°C
Average Temperature	31.2°C
Image Range	25.4°C to 64.0°C
Camera Model	Ti40FT
Camera Manufacturer	Fluke
Image Time	12/6/2013 6:26:09 PM

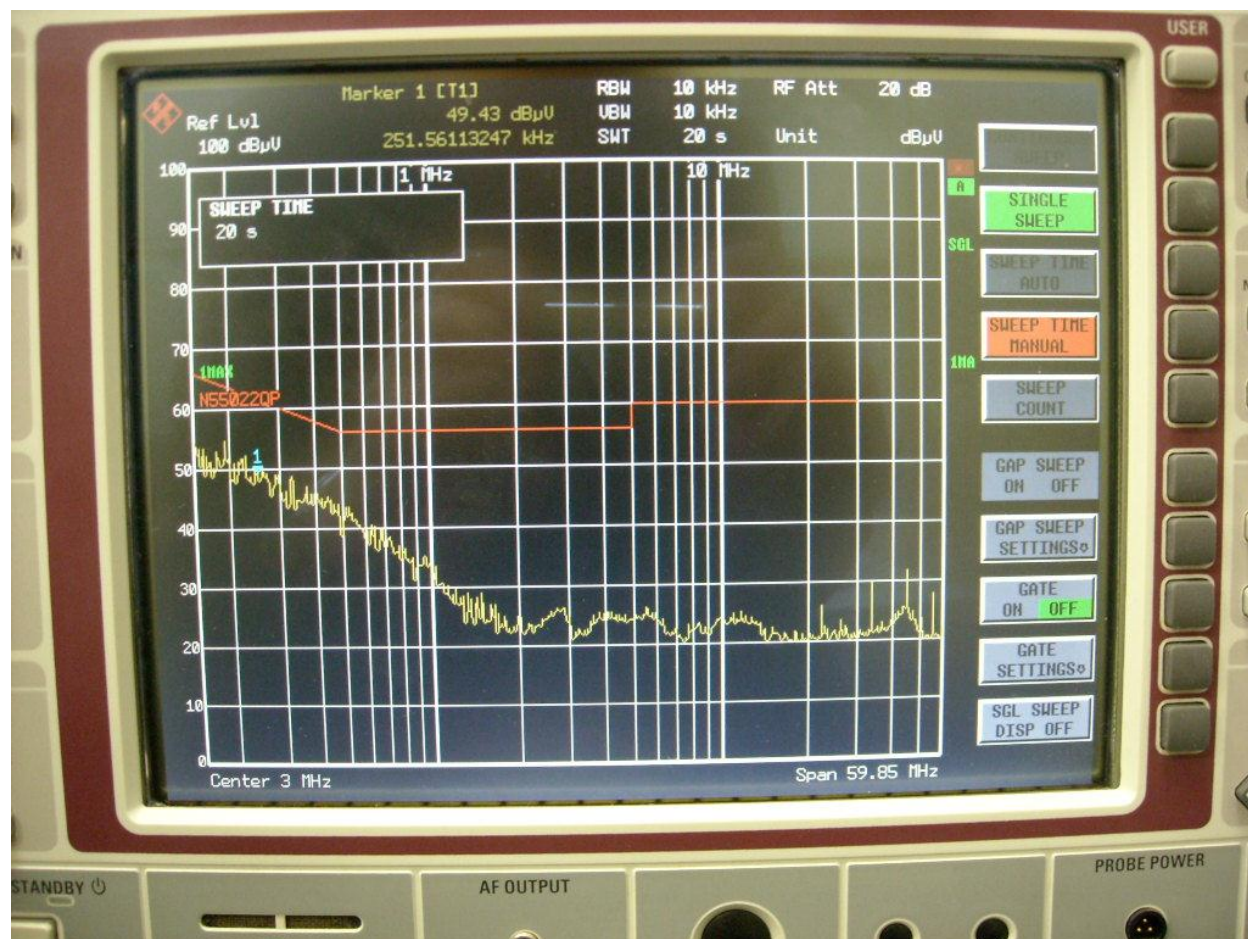
Main Image Markers

Name	Temperature
D6	63.9°C
Q1	51.8°C
D5	49.7°C
R5	48.5°C
U1	46.5°C
T1	45.1°C

8 EMI measurement

The screenshot below shows the EMI measurement (quasi-peak) of the converter connected to an isolation transformer and a Hameg HM6050-2 LISN. The supply voltage was 230Vac.

The converter has been loaded with a 12 Ohm power resistor. Both converter and resistor have been placed 20cm over the ground plane. The output ground terminal has been connected to LISN earth.



EVALUATION BOARD/KIT/MODULE (EVM) WARNINGS, RESTRICTIONS AND DISCLAIMER

For Feasibility Evaluation Only, in Laboratory/Development Environments. The EVM is not a complete product. It is intended solely for use for preliminary feasibility evaluation in laboratory / development environments by technically qualified electronics experts who are familiar with the dangers and application risks associated with handling electrical / mechanical components, systems and subsystems. It should not be used as all or part of a production unit.

Your Sole Responsibility and Risk. You acknowledge, represent and agree that:

1. You have unique knowledge concerning Federal, State and local regulatory requirements (including but not limited to Food and Drug Administration regulations, if applicable) which relate to your products and which relate to your use (and/or that of your employees, affiliates, contractors or designees) of the EVM for evaluation, testing and other purposes.
2. You have full and exclusive responsibility to assure the safety and compliance of your products with all such laws and other applicable regulatory requirements, and also to assure the safety of any activities to be conducted by you and/or your employees, affiliates, contractors or designees, using the EVM. Further, you are responsible to assure that any interfaces (electronic and/or mechanical) between the EVM and any human body are designed with suitable isolation and means to safely limit accessible leakage currents to minimize the risk of electrical shock hazard.
3. Since the EVM is not a completed product, it may not meet all applicable regulatory and safety compliance standards (such as UL, CSA, VDE, CE, RoHS and WEEE) which may normally be associated with similar items. You assume full responsibility to determine and/or assure compliance with any such standards and related certifications as may be applicable. You will employ reasonable safeguards to ensure that your use of the EVM will not result in any property damage, injury or death, even if the EVM should fail to perform as described or expected.

Certain Instructions. Exceeding the specified EVM ratings (including but not limited to input and output voltage, current, power, and environmental ranges) may cause property damage, personal injury or death. If there are questions concerning these ratings please contact a TI field representative prior to connecting interface electronics including input power and intended loads. Any loads applied outside of the specified output range may result in unintended and/or inaccurate operation and/or possible permanent damage to the EVM and/or interface electronics. Please consult the EVM User's Guide prior to connecting any load to the EVM output. If there is uncertainty as to the load specification, please contact a TI field representative. During normal operation, some circuit components may have case temperatures greater than 60°C as long as the input and output ranges are maintained at nominal ambient operating temperature. These components include but are not limited to linear regulators, switching transistors, pass transistors, and current sense resistors which can be identified using the EVM schematic located in the EVM User's Guide. When placing measurement probes near these devices during normal operation, please be aware that these devices may be very warm to the touch.

Agreement to Defend, Indemnify and Hold Harmless. You agree to defend, indemnify and hold TI, its licensors and their representatives harmless from and against any and all claims, damages, losses, expenses, costs and liabilities (collectively, "Claims") arising out of or in connection with any use of the EVM that is not in accordance with the terms of this agreement. This obligation shall apply whether Claims arise under the law of tort or contract or any other legal theory, and even if the EVM fails to perform as described or expected.

Safety-Critical or Life-Critical Applications. If you intend to evaluate TI components for possible use in safety-critical applications (such as life support) where a failure of the TI product would reasonably be expected to cause severe personal injury or death, such as devices which are classified as FDA Class III or similar classification, then you must specifically notify TI of such intent and enter into a separate Assurance and Indemnity Agreement.

IMPORTANT NOTICE AND DISCLAIMER

TI PROVIDES TECHNICAL AND RELIABILITY DATA (INCLUDING DATASHEETS), DESIGN RESOURCES (INCLUDING REFERENCE DESIGNS), APPLICATION OR OTHER DESIGN ADVICE, WEB TOOLS, SAFETY INFORMATION, AND OTHER RESOURCES "AS IS" AND WITH ALL FAULTS, AND DISCLAIMS ALL WARRANTIES, EXPRESS AND IMPLIED, INCLUDING WITHOUT LIMITATION ANY IMPLIED WARRANTIES OF MERCHANTABILITY, FITNESS FOR A PARTICULAR PURPOSE OR NON-INFRINGEMENT OF THIRD PARTY INTELLECTUAL PROPERTY RIGHTS.

These resources are intended for skilled developers designing with TI products. You are solely responsible for (1) selecting the appropriate TI products for your application, (2) designing, validating and testing your application, and (3) ensuring your application meets applicable standards, and any other safety, security, or other requirements. These resources are subject to change without notice. TI grants you permission to use these resources only for development of an application that uses the TI products described in the resource. Other reproduction and display of these resources is prohibited. No license is granted to any other TI intellectual property right or to any third party intellectual property right. TI disclaims responsibility for, and you will fully indemnify TI and its representatives against, any claims, damages, costs, losses, and liabilities arising out of your use of these resources.

TI's products are provided subject to TI's Terms of Sale (<https://www.ti.com/legal/termsofsale.html>) or other applicable terms available either on [ti.com](https://www.ti.com) or provided in conjunction with such TI products. TI's provision of these resources does not expand or otherwise alter TI's applicable warranties or warranty disclaimers for TI products.

Mailing Address: Texas Instruments, Post Office Box 655303, Dallas, Texas 75265
Copyright © 2021, Texas Instruments Incorporated