

LM2747,LM3100,LM5035

????????????????????



Literature Number: ZHCA403

POWER | *designer*

Expert tips, tricks, and techniques for powerful designs

No. 112

Feature Article.....1-7

SIMPLE SWITCHER®
Synchronous Regulator....2

2.5A Buck Regulator4

Synchronous Buck
Controller.....6

Power Design Tools.....8

Synchronous Rectification in High-Performance Power Converter Design

— By Robert Selders, Jr., Applications Engineer

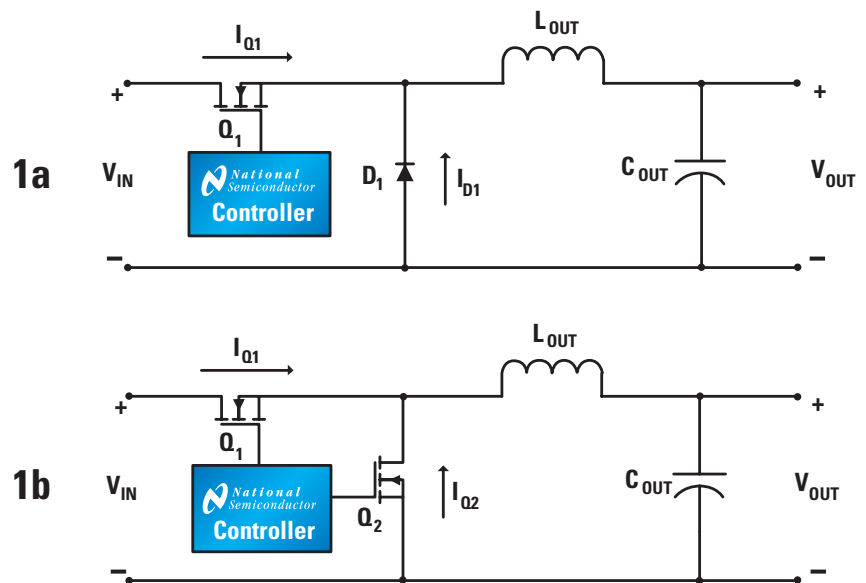


Figure 1. (a) Non-synchronous and (b) Synchronous Buck Converters

Power converters are becoming increasingly commonplace in the electrical industry. Product manufacturers and suppliers of electrical equipment are demanding ever-increasing functionality (i.e., lower input and output voltages, higher currents, faster transient response) from their power supply systems.

To meet these demands, switching power supply designers in the late 1990s began adopting Synchronous Rectification (SR)—the use of MOSFETs to achieve the rectification function typically performed by diodes. SR improves efficiency, thermal performance, power density, manufacturability, and reliability, and decreases the overall system cost of power supply systems. This article will examine the advantages of SR and discuss the challenges encountered in its implementation.

NEXT ISSUE:

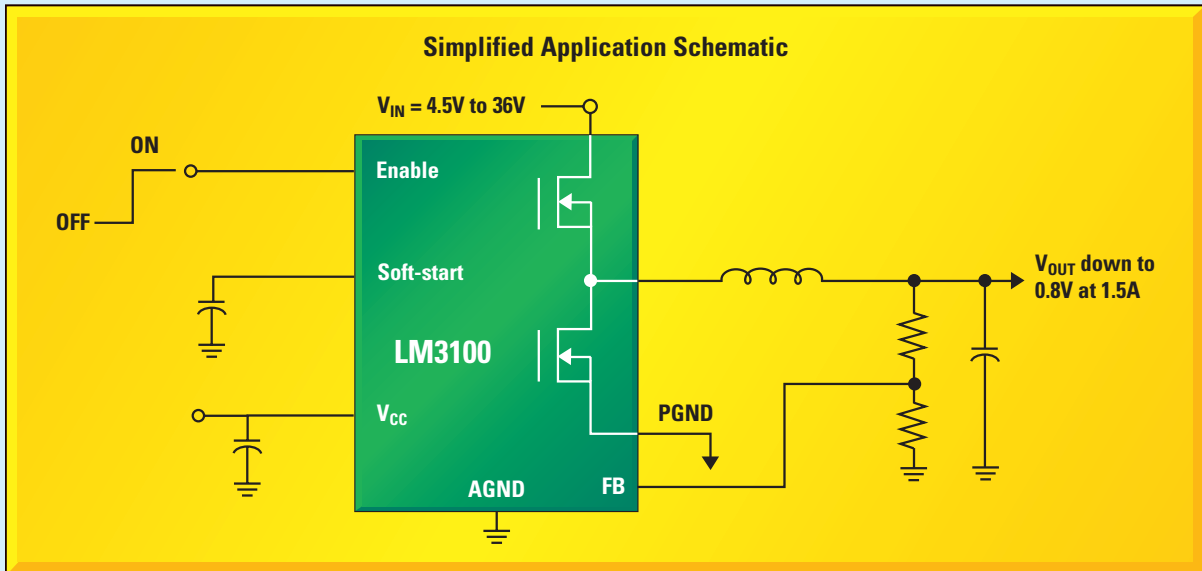
LED Backlighting Applications

 **National
Semiconductor**
The Sight & Sound of Information



1.5A, 36V SIMPLE SWITCHER® Synchronous Step-Down Regulator

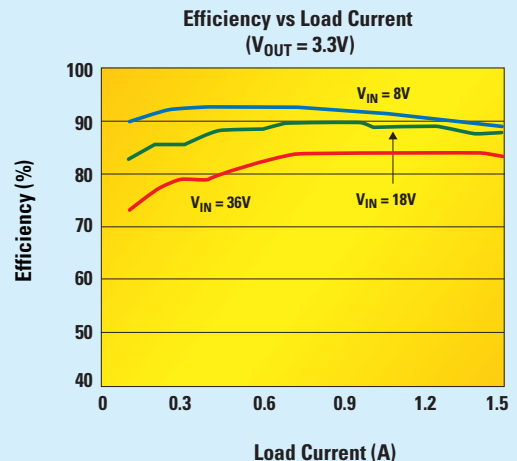
Constant-On-Time (COT) LM3100 Regulator Needs No External Compensation and Provides Stability with Ceramic Capacitors



LM3100 Features

- Synchronous conversion for efficient operation below $3.3 V_{OUT}$
- COT architecture provides lightning-fast transient response
- Stable with ceramic capacitors
- Near-constant frequency operation from unregulated supplies
- No external compensation reduces external component count
- Frequency adjustable up to 1 MHz
- Available in TSSOP-20 packaging

AVAILABLE
LEAD-FREE



Ideal for use in embedded systems, industrial controls, automotive telematics and body electronics, point-of-load regulators, storage systems, and broadband infrastructure

For **FREE** samples, datasheets, and more information, visit

www.national.com/pf/LM/LM3100.html

Synchronous Rectification in High-Performance Power Converter Design

Drawbacks of Diode Rectification

Nonsynchronous and synchronous buck converters are shown in *Figure 1*. A nonsynchronous buck converter uses a FET and Schottky diode as its switches (*Figure 1a*). When the FET turns on, energy is delivered to the output inductor and the load. When the FET turns off, the current in the inductor commutates to the Schottky diode. Provided the load current is higher than half the ripple current of the output inductor, the converter operates in the continuous conduction mode.

The Schottky diode is selected by its forward voltage drop and reverse leakage current characteristics. But as output voltages drop, the diode's forward voltage is more significant which reduces the converter's efficiency. Physical limitations prevent the forward voltage drop of diodes from being reduced below approximately 0.3V.

In contrast, the on resistance, R_{DSON} , of MOSFETs can be lowered, either by increasing the size of the die or by paralleling discrete devices. Consequently, a MOSFET used in place of a diode can have a significantly smaller voltage drop at a given current than the diode.

This makes SR attractive, especially in applications sensitive to efficiency, converter size, and thermal performance, such as portable or handheld devices. MOSFET manufacturers are constantly introducing new MOSFET technologies that have lower R_{DSON} and total gate charge, (Q_{G}), which makes it easier to implement SR in power converter design.

What is Synchronous Rectification?

In the synchronous buck converter, for example, the efficiency is increased by replacing the Schottky diode with a low side MOSFET (*Figure 1b*). The two MOSFETs must be driven in a complimentary

manner with a small dead time between their conduction intervals to avoid shoot-through. The synchronous FET operates in the third quadrant, because the current flows from the source to the drain. In contrast to its nonsynchronous counterpart converter, the synchronous buck converter always operates in continuous conduction, even down to no load.

During the dead time periods, the inductor current flows through the lower FET's body diode. This body diode usually has a very slow reverse recovery characteristic that can adversely affect the converter's efficiency. An external Schottky diode can be placed in parallel with the low-side FET to shunt the body diode and prevent it from affecting the converter's performance. The added Schottky can have a much lower current rating than the diode in a nonsynchronous buck converter because it only conducts during the small dead time (which is typically less than a few percent of the switching cycle) when both FETs are off.

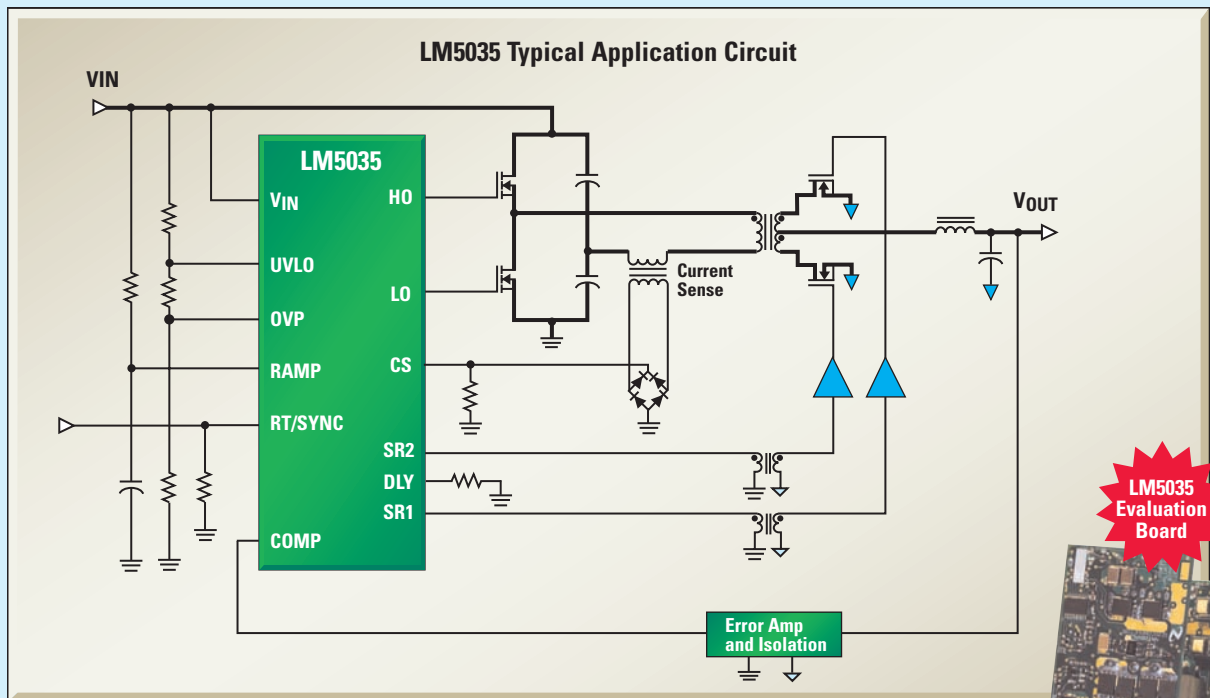
Benefits of Synchronous Rectification

The advantages of using SR in high-performance, high-power converters include better efficiency, lower power dissipation, better thermal performance, lower profile, increased quality, improved manufacturing yields through automated assembly processes (higher reliability), and inherently optimal current sharing when synchronous FETs are paralleled.

As mentioned above, a number of MOSFETs can be paralleled to handle higher output currents. Because the effective R_{DSON} in this case is inversely proportional to the number of paralleled devices, conduction losses are reduced. Also, the R_{DSON} has a positive temperature coefficient so the FETs will automatically tend to share current equally,

High-Performance, Half-Bridge Controller-Driver for Compact, Efficient Converters

Highly Integrated LM5035 Half-Bridge Controller-Driver Maximizes Efficiency and Power Density



**LM5035
Evaluation
Board**



**AVAILABLE
LEAD-FREE**

LM5035 Features

- 105V / 2A Half-bridge gate drivers
- Synchronous rectifier control outputs with programmable delays
- Oscillator synchronization (patent pending)
- Programmable line under-voltage lockout
- Line over-voltage protection
- Versatile dual mode over-current protection with hiccup delay timer
- Direct opto-coupler interface

Ideal for use in telecommunications and data communications systems, industrial power supplies, distributed power systems, and consumer electronics

For **FREE** samples, datasheets, and more information, visit

www.national.com/pf/LM/LM5035.html

Synchronous Rectification in High Performance Power Converter Design

facilitating optimal thermal distribution among the SR devices. This improves the ability to remove heat from the components and the PCB, directly improving the thermal performance of the design. Other potential benefits from SR include smaller form factors, open frame configurations, lower profiles, higher ambient operating temperatures, and higher power densities.

Design Trade-Offs in Synchronous Rectified Converters

In an effort to minimize the size of the converter and decrease output ripple voltage for low-voltage applications, designers often increase the switching frequency to reduce the size of the output inductor and capacitor. If multiple FETs are paralleled, this increase in frequency can also increase gate drive and switching losses.

Design trade-offs must be made on a per-application basis. For example, in a high input voltage, low output voltage synchronous buck converter, since the operating conditions are such that the high-side FET has a significantly lower RMS current than the low-side FET, the high-side FET should be chosen with less Q_G and higher $R_{DS(ON)}$. It is more critical to lower switching losses for this

device than conduction losses. Conversely, the low-side FET carries more RMS current so its $R_{DS(ON)}$ should be as low possible.

Selecting controllers with stronger gate drivers in synchronous converters reduces switching losses by minimizing the time the FETs take to switch. However, faster rise and fall times generate high frequency noise that can lead to system noise and EMI compliance issues.

Driving Synchronous Rectifiers in Isolated Topologies

Power converters utilizing isolated topologies are used in systems requiring galvanic isolation among system grounds. Such systems include distributed bus architectures, Power-over-Ethernet systems, and wireless basestations. (Figure 2).

Using SR in isolated converters can improve their performance significantly. All isolated topologies: forward, flyback, push-pull, half and full bridge (current and voltage fed), can be synchronously rectified. However, providing adequate and well-timed gate drive signals to the SRs in each topology presents its own set of challenges.

There are basically two types of drive schemes for FETs on the secondary stage of isolated topologies: self-driven gate signals taken directly from the secondary transformer windings, and control-driven gate signals derived from the PWM controller or some other primary referenced signal. For a given application several different implementations of these drives are possible. The designer should choose the simplest solution that also meets the performance requirements.

The self-driven scheme is the simplest, most straight forward SR drive scheme (Figure 3) and works well in topologies where the transformer

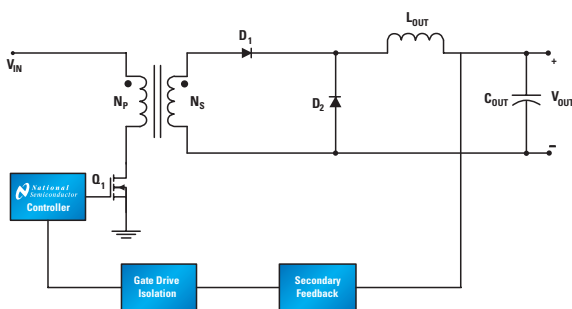
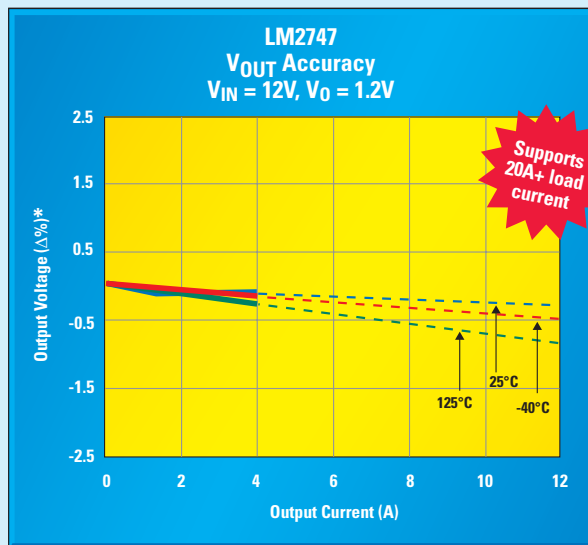
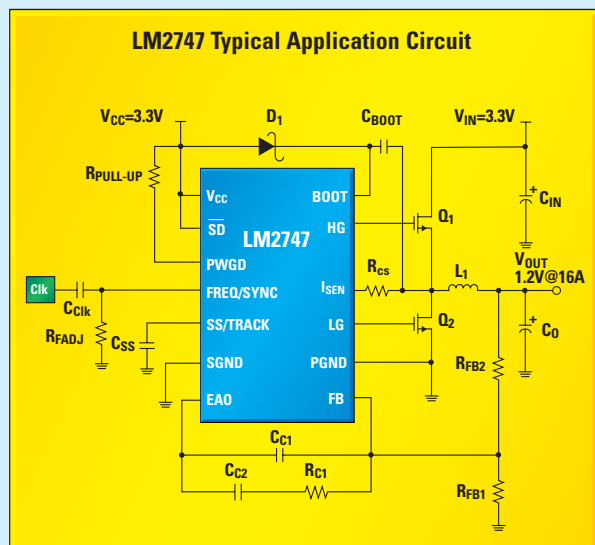


Figure 2. Isolated power converter with output synchronous rectification

Synchronous Buck Controller with 1% Voltage Feedback Accuracy Across -40 to +125°C

National's LM2747 Controller Provides Down Conversion to Output Voltages as Low as 0.6V



*Includes effects of external components at temperature

LM2747 Features

- Switching frequency from 50 kHz to 1 MHz
- Switching frequency synchronize range 250 kHz to 1 MHz
- Startup with a pre-biased output load
- Power stage input voltage from 1V to 14V
- Control stage input voltage from 3V to 6V
- Power Good flag and shutdown
- Output overvoltage and undervoltage detection
- Available in TSSOP-14 packaging

AVAILABLE
LEAD-FREE

Ideal for use in cable modems, DSL and ADSL, laser and ink jet printers, low voltage power modules, DSP, ASIC, core, and portable computing

For FREE samples, datasheets, and more information, visit

www.national.com/pf/LM/LM2747.html

Synchronous Rectification in High Performance Power Converter Design

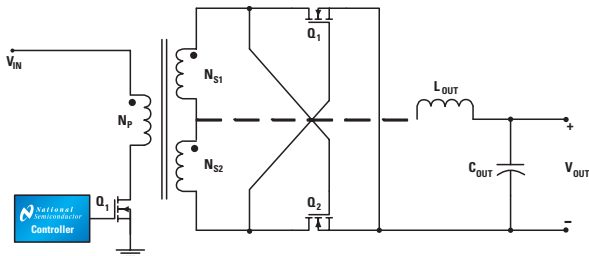


Figure 3. Self-driven synchronous rectification output stage

voltage is not zero for any significant period of time. Two SR FETs replace the output rectifier diodes, and voltage generated across the secondary windings drives the gates of the SRs. In most cases, higher or lower output voltages can be achieved with same topology by utilizing a different transformer turns ratio ($N_p:N_{S1}:N_{S2}$) and by appropriately selecting the SR FETs.

The main problem with self-driven SRs in topologies where the transformer voltage periodically goes to and stays at zero is that there is no signal to drive the gates of the SR FETs during these intervals. During these times, body diodes of the SRs conduct the load current, thus increasing power losses. Lower output voltages may require additional windings to increase the normal operating voltage applied to the SR FET gates to an adequate level.

Because the secondary winding voltage varies with input line voltage, the voltage on the SR gates will vary. The efficiency is impacted because $R_{DS(on)}$ depends on the gate-source voltage (V_{GS}). In wide input voltage range converters this $R_{DS(on)}$ variation can be as high as 2:1.

There are alternate gate drive techniques that can be employed for transformer-based topologies. In low-voltage, high-current applications, these drive

techniques both reduce losses associated with the dead time intervals and produce nearly constant-amplitude gate drive pulses so efficiency is not adversely impacted by varying line voltages.

Control-driven schemes tend to solve the limitations of self-driven methods. However, they are typically more complex and expensive (*Figure 4*). Depending on how parts-intensive the self-driven scheme is, a control-driven scheme may actually be the better alternative. The control signals used to drive the SR FETs can be derived from a primary or secondary side referenced controller.

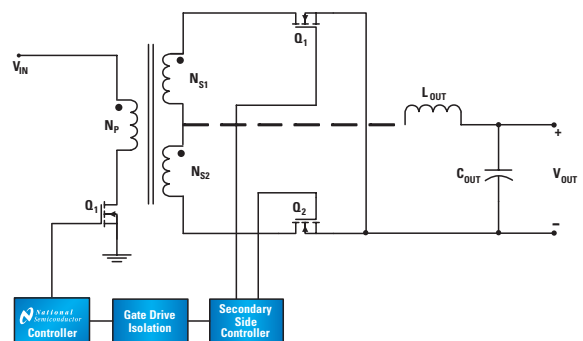


Figure 4. Control-driven synchronous rectification output stage

Conclusion

Synchronous switching power converters give better performance than nonsynchronous converters in low output voltage, high output current systems applications. Ensuring the proper timing of the gate drive signals for the SRs is an important task that designers must address to maximize converter performance. ■

Acknowledgement: The author would like to thank Dr. Haachitaba Mweene for his feedback on the article.

Power Design Tools

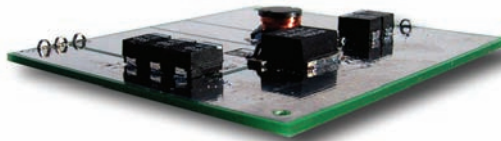
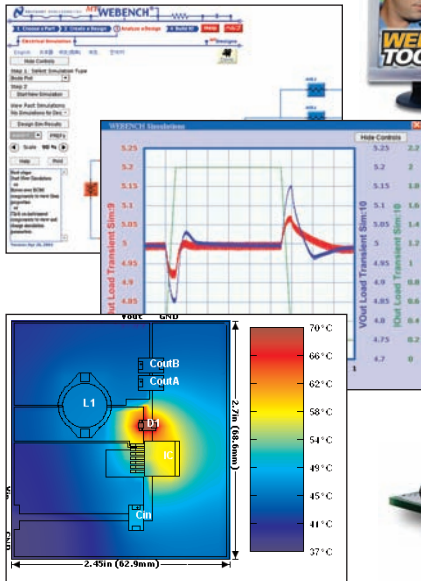


WEBENCH® Online Design Environment

Our design and prototyping environment simplifies and expedites the entire design process.

1. Choose a part
2. Create a design
3. Analyze a power supply design
 - Perform electrical simulation
 - Simulate thermal behavior
4. Build it
 - Receive your custom prototype kit 24 hours later

webench.national.com



Reference Designs

National's power reference design library provides a comprehensive library of practical reference designs to speed system design and time-to-market.

www.national.com/refdesigns

National Semiconductor

2900 Semiconductor Drive
PO Box 58090
Santa Clara, CA 95052
1 800 272 9959

Visit our website at:
power.national.com

For more information,
send email to:
new.feedback@nsc.com

Don't miss a single issue!



Subscribe now to receive email alerts when new issues of Power Designer are available:

power.national.com/designer

Read our Signal Path DesignerSM online today at:

signalpath.national.com/designer



重要声明

德州仪器(TI) 及其下属子公司有权在不事先通知的情况下, 随时对所提供的产品和服务进行更正、修改、增强、改进或其它更改, 并有权随时中止提供任何产品和服务。客户在下订单前应获取最新的相关信息, 并验证这些信息是否完整且是最新的。所有产品的销售都遵循在订单确认时所提供的TI 销售条款与条件。

TI 保证其所销售的硬件产品的性能符合TI 标准保修的适用规范。仅在TI 保证的范围内, 且TI 认为有必要时才会使用测试或其它质量控制技术。除非政府做出了硬性规定, 否则没有必要对每种产品的所有参数进行测试。

TI 对应用帮助或客户产品设计不承担任何义务。客户应对其使用TI 组件的产品和应用自行负责。为尽量减小与客户产品和应用相关的风险, 客户应提供充分的设计与操作安全措施。

TI 不对任何TI 专利权、版权、屏蔽作品权或其它与使用了TI 产品或服务的组合设备、机器、流程相关的TI 知识产权中授予的直接或隐含权限作出任何保证或解释。TI 所发布的与第三方产品或服务有关的信息, 不能构成从TI 获得使用这些产品或服务的许可、授权、或认可。使用此类信息可能需要获得第三方的专利权或其它知识产权方面的许可, 或是TI 的专利权或其它知识产权方面的许可。

对于TI 的产品手册或数据表, 仅在没有对内容进行任何篡改且带有相关授权、条件、限制和声明的情况下才允许进行复制。在复制信息的过程中对内容的篡改属于非法的、欺诈性商业行为。TI 对此类篡改过的文件不承担任何责任。

在转售TI 产品或服务时, 如果存在对产品或服务参数的虚假陈述, 则会失去相关TI 产品或服务的明示或暗示授权, 且这是非法的、欺诈性商业行为。TI 对此类虚假陈述不承担任何责任。

TI 产品未获得用于关键的安全应用中的授权, 例如生命支持应用(在该类应用中一旦TI 产品故障将预计造成重大的人员伤亡), 除非各方官员已经达成了专门管控此类使用的协议。购买者的购买行为即表示, 他们具备有关其应用安全以及规章衍生所需的所有专业技术和知识, 并且认可和同意, 尽管任何应用相关信息或支持仍可能由TI 提供, 但他们将独力负责满足在关键安全应用中使用其产品及TI 产品所需的所有法律、法规和安全相关要求。此外, 购买者必须全额赔偿因在此类关键安全应用中使用TI 产品而对TI 及其代表造成的损失。

TI 产品并非设计或专门用于军事/航空应用, 以及环境方面的产品, 除非TI 特别注明该产品属于“军用”或“增强型塑料”产品。只有TI 指定的军用产品才满足军用规格。购买者认可并同意, 对TI 未指定军用的产品进行军事方面的应用, 风险由购买者单独承担, 并且独力负责在此类相关使用中满足所有法律和法规要求。

TI 产品并非设计或专门用于汽车应用以及环境方面的产品, 除非TI 特别注明该产品符合ISO/TS 16949 要求。购买者认可并同意, 如果他们在汽车应用中使用任何未被指定的产品, TI 对未能满足应用所需要求不承担任何责任。

可访问以下URL 地址以获取有关其它TI 产品和应用解决方案的信息:

	产品		应用
数字音频	www.ti.com.cn/audio	通信与电信	www.ti.com.cn/telecom
放大器和线性器件	www.ti.com.cn/amplifiers	计算机及周边	www.ti.com.cn/computer
数据转换器	www.ti.com.cn/dataconverters	消费电子	www.ti.com/consumer-apps
DLP® 产品	www.dlp.com	能源	www.ti.com/energy
DSP - 数字信号处理器	www.ti.com.cn/dsp	工业应用	www.ti.com.cn/industrial
时钟和计时器	www.ti.com.cn/clockandtimers	医疗电子	www.ti.com.cn/medical
接口	www.ti.com.cn/interface	安防应用	www.ti.com.cn/security
逻辑	www.ti.com.cn/logic	汽车电子	www.ti.com.cn/automotive
电源管理	www.ti.com.cn/power	视频和影像	www.ti.com.cn/video
微控制器 (MCU)	www.ti.com.cn/microcontrollers		
RFID 系统	www.ti.com.cn/rfidsys		
OMAP 机动性处理器	www.ti.com/omap		
无线连通性	www.ti.com.cn/wirelessconnectivity		
	德州仪器在线技术支持社区		www.deyisupport.com

邮寄地址: 上海市浦东新区世纪大道 1568 号, 中建大厦 32 楼 邮政编码: 200122
Copyright © 2011 德州仪器 半导体技术 (上海) 有限公司